



Palm Springs

MEET YOUR HOST

*W*elcome .. ! I am absolutely thrilled that you are here! I know that you will have a wonderful stay and fabulous time in our beautiful home! I have stocked the place with all the essentials you will need for a comfortable stay.

Please take the time to review this welcome book. It is packed with information about the house

If you have any questions or concerns regarding anything that wasn't covered in this folder, please call any phone number listed below

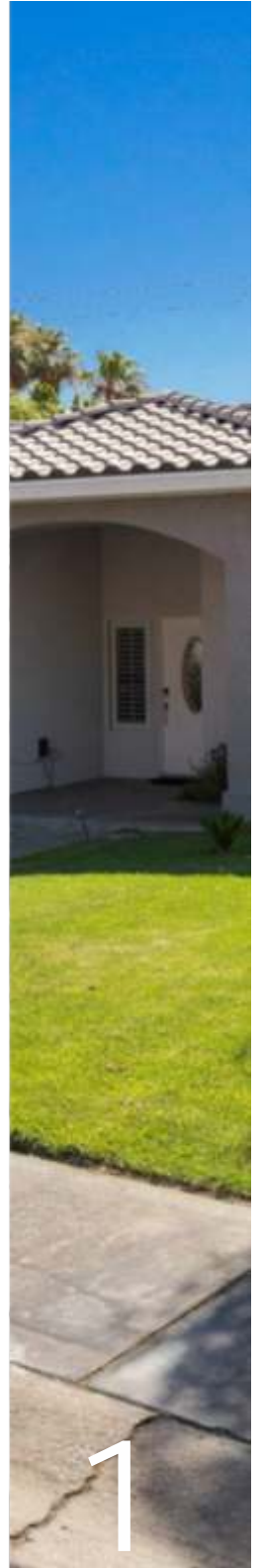


MARY

if you need to get in touch

(818) 802-7220 (818) 645-6011

2120guests@gmail.com www.PalmtiniHouse.com





SpectrumSetup-08

POOL AREA WiFi

SpectrumSetup-08_EXT

PASSWORD

sillynest865



www.PalmtiniHouse.com

DIRECT BOOKING | AIRBNB / VRBO | GIFTS | DONATE





What's nearby **PALMTINI HOUSE** Palm Springs, CA



bloomingdale's

Marshalls

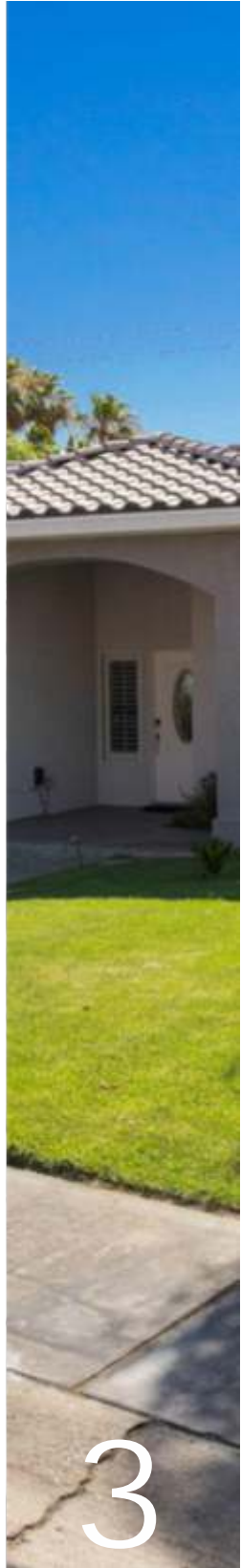


KOHL'S



www.PalmtiniHouse.com

DIRECT BOOKING | AIRBNB / VRBO | GIFTS | DONATE



EMERGENCY INFO



LOCATION

2120 W. Nicola Rd.
Palm Springs, CA 92262



EMERGENCY

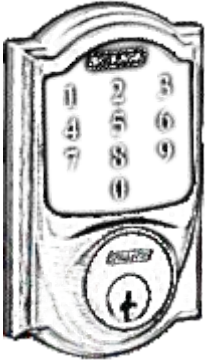
Call 9-1-1 in any emergency
24HR Hotline
To report prohibited behavior
(760) 862-6900



HOSPITAL

Desert Regional Medical Center
1150 N Indian Canyon Dr,
Palm Springs, CA 92262
Open 24 hours (760) 323-6511

CHECK-IN & CHECK-OUT



CHECK-IN

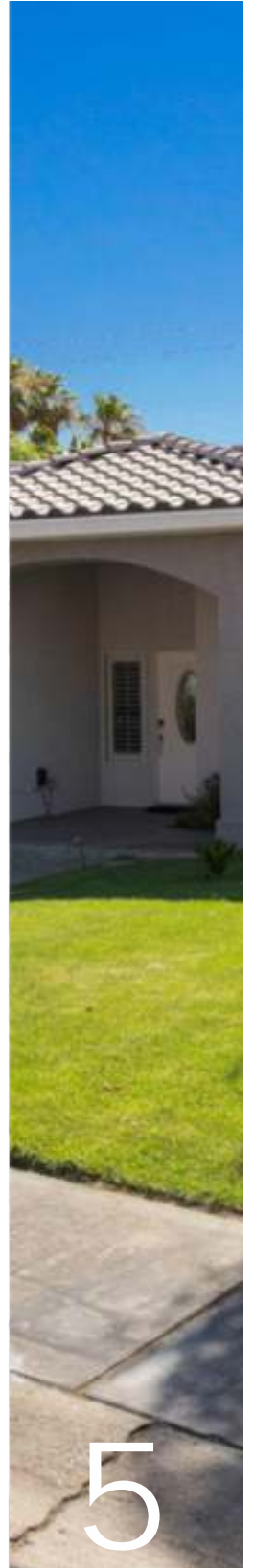
3:00 PM

- Read Welcome Folder
Follow all the rules
- Contact us if you need anything!

CHECK-OUT

11:00 AM

- Lock the door.
- Make sure you have all your belongings.
- Follow check-out instructions, page 10
- Send us a message to let us know you've checked out!



HOUSE RULES

QUIET HOURS

- Quiet Hours are from **10PM-10AM**.
- Absolutely **NO MUSIC** allowed outside **AT ANY TIME**.
- House not suitable for parties/events.

COMMUNITY

- If excessive **NOISE** is reported, **POLICE** will be called and a fine will be assessed.
(This will be deducted from security deposit)

PARKING

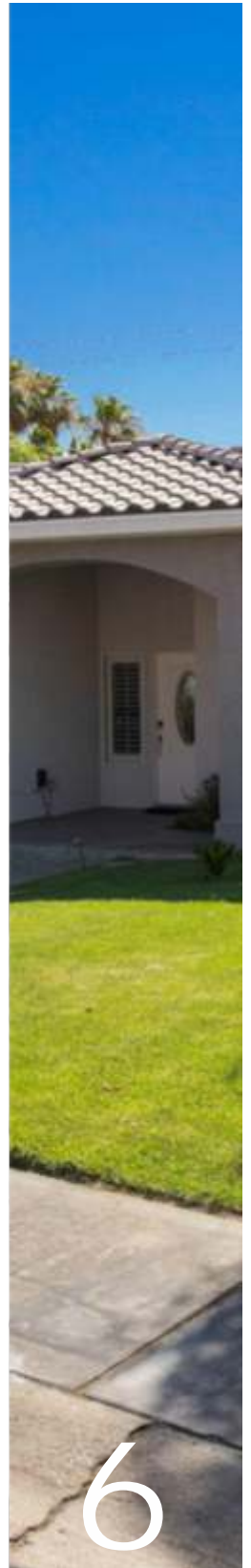
- **ABSOLUTELY NO STREET PARKING ALLOWED.**
- Maximum of 4 cars allowed on the driveway.

POOL

- No glass containers near the pool & hot tub area.
- No hard objects inside the pool.
- Children must be accompanied by adults in the pool area at all times.

Pet

- **NO Pets** allowed



HOUSE RULES

NO SMOKING

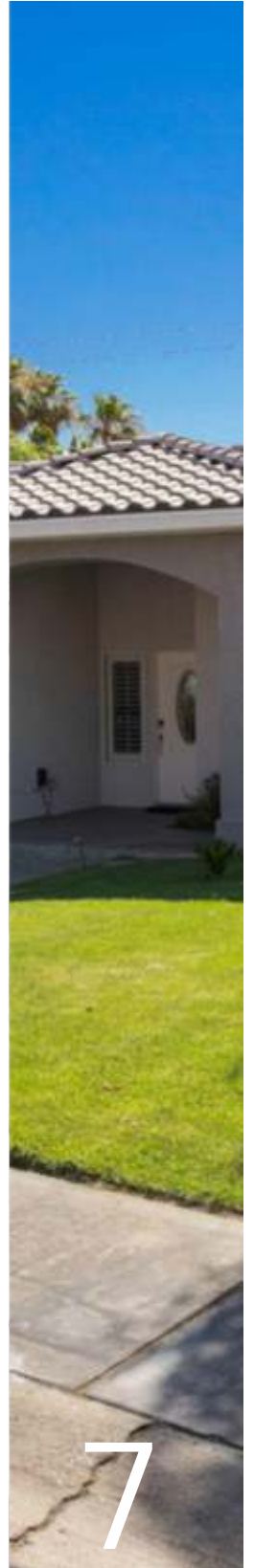
- No smoking allowed inside the house.
- SMOKING ALLOWED ONLY OUTSIDE.
- Use ash trays located in the grill 2nd drawer, & always empty out when not in use.

HOUSE

- Please report any damages that occur while you're in residence.
- Please keep doors & windows closed during the summer to have cool & healthy indoor temperature.
- Please do not flush any baby wipes or waste down the toilet.
- Don't throw anything down the garbage disposal like bones or anything hard
- Floors inside are slippery, please do not walk inside when wet.

WiFi

- Do not, for whatever reason, turn off or reset the WIFI router/modem.
- If there is an issue with internet, contact us and we'll get it resolved.



HOW TO USE

AIR CONDITIONING

- If you want to adjust the temperature, the thermostat is located on the wall next to laundry room.

TV

- To watch cable turn on the TV (using the Inside remote), click the home button & select "Spectrum App". & enjoy the shows and movies.

OUTDOOR BBQ

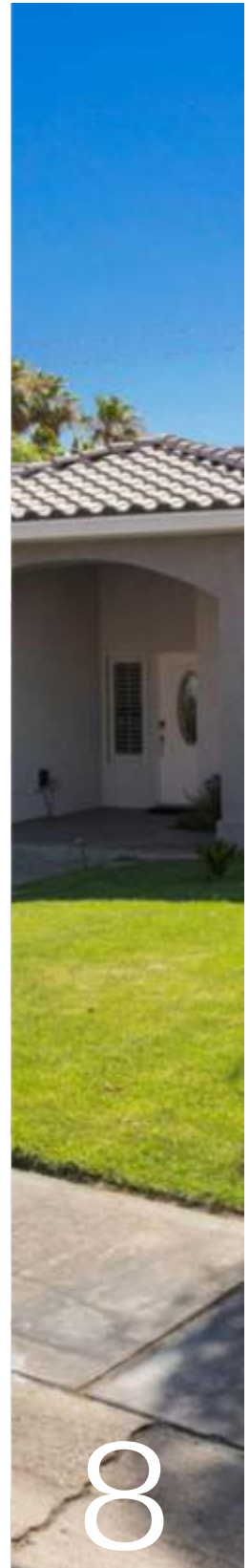
- Gas Grill, Make sure you turn the gas knob OFF after you finish.
- Charcoal Grill located next to the gas grill.
- No food is to be dumped in the sink.

POOL/SPA HEATER

- 1st press [Spa] ON
- Choice of [Jets]
- [Light]
- [Heater] *Temp. is set to 102°

- 2nd press all OFF when you finish.

- FOR POOL Heater Contact us, page 1.



HOW TO USE

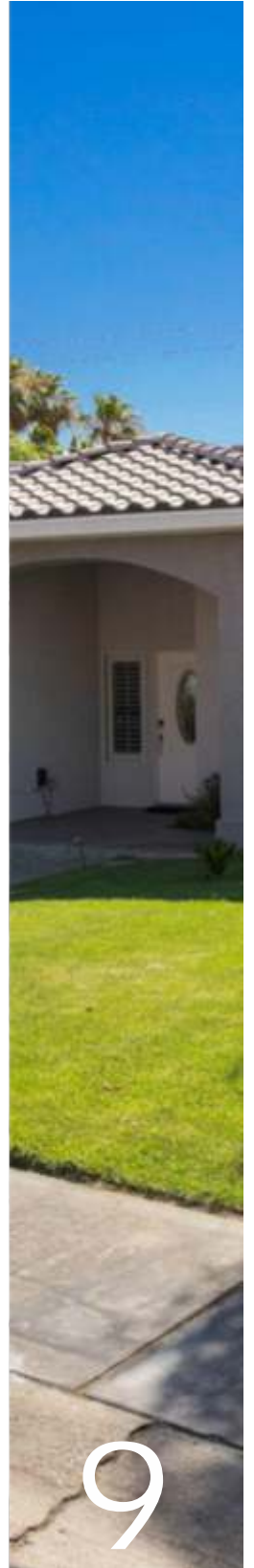
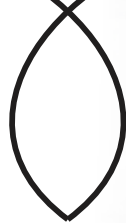
FIRE PIT



- Find the gas valve key & stove lighter inside the 2nd drawer under the gas grill.
- Turn the valve off when you don't need to use it.
- Put the valve key & the lighter back to same place.

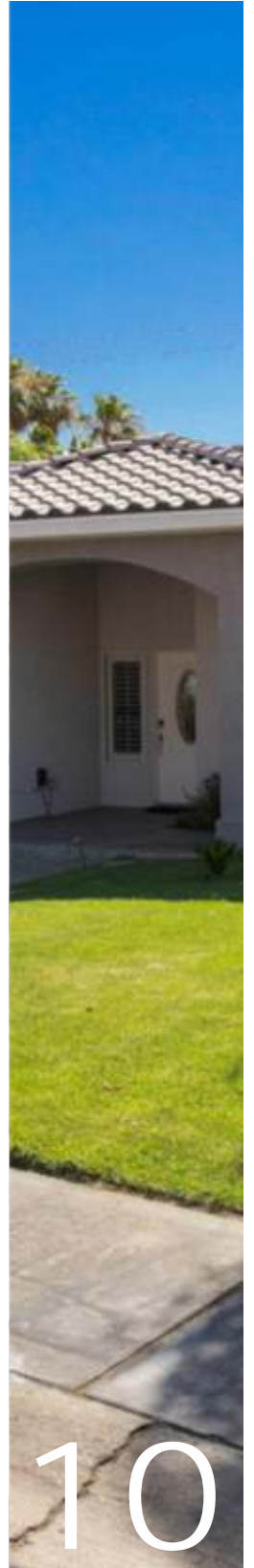
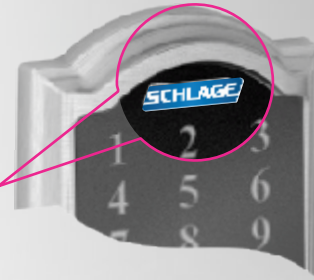
GARBAGE & RECYCLING

- Extra garbage should be thrown out in the trash can located by the side of the house.
- Recycling, always use the blue can outside next to brown trash can.



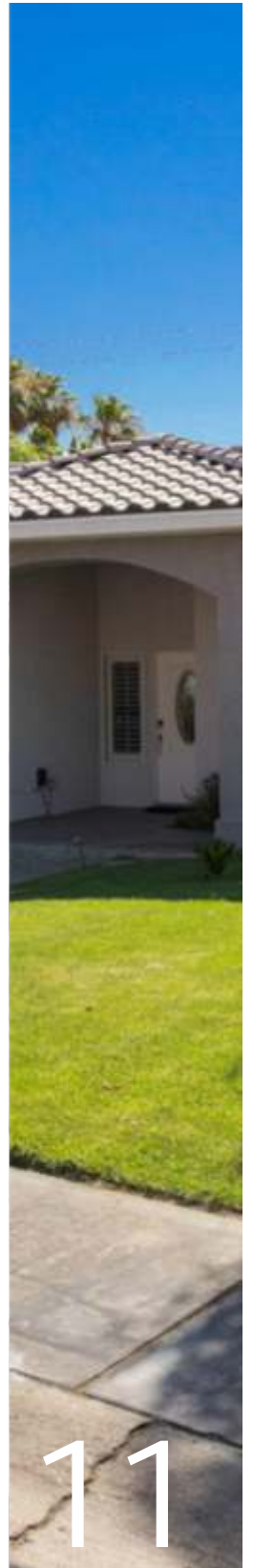
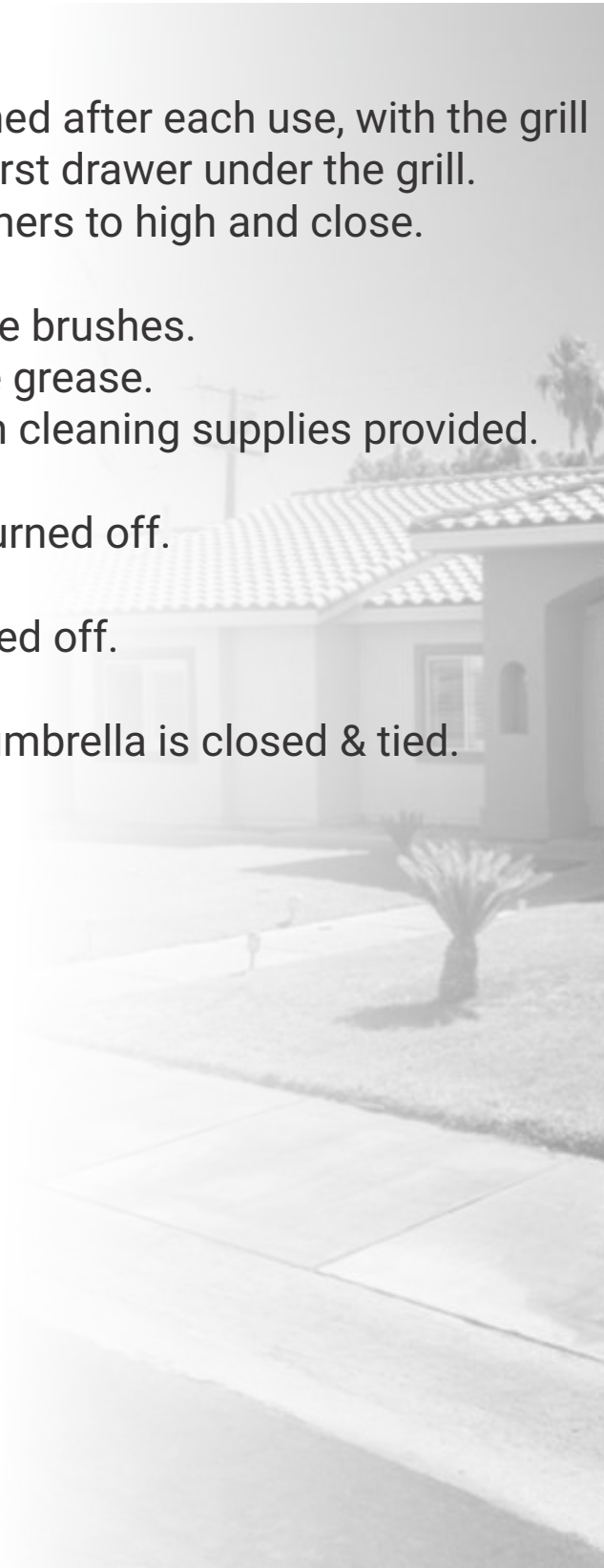
CHECKING OUT

- To lock the door when you leave, just press on the lock brand name **SCHLAGE** OR enter the same code to lock.
- Set the thermostat to 78 degrees.
- Turn OFF the game room AC.
- Shut the windows and lock the doors.
- Put the dirty towels in the hamper. (Any missing towels will cost \$25 / towel).
- All dishes must be washed in the dishwasher & put away. If the dishes are left uncleaned & in the sink, an extra \$75 will be charged.
- Make sure the kitchen stove is completely off
- Don't leave anything in the fridges (inside & outside)
- Dispose the trash in the proper trash disposals outside, Do not leave any trash inside the house.
- Make sure the fire pit gas is off
- Make sure the outside grill is completely off
- Tie the gazebo curtains to the poles



CHECKING OUT

- The grill needs to be cleaned after each use, with the grill supplies provided in the first drawer under the grill.
 - After use, turn on all burners to high and close.
 - Keep closed for 15 min.
 - Open the grill and use the brushes provided to scrub off the grease.
 - Please wipe the grill with cleaning supplies provided.
- Make sure spa heater is turned off.
- Make sure spa jets is turned off.
- Make sure the barrel bar umbrella is closed & tied.



WHERE TO FIND

FIRST AID KIT

In the cabinet above the laundry machine.

EXTRA BLANKETS

In the master bedroom walk in closet.

EXTRA POOL TOWELS

In the cabinet above the laundry machine.

VACUUM

In the master bedroom walk in closet.

TV REMOTE CONTROL

On the coffee table in the living room.

CLOTHES STEAMER

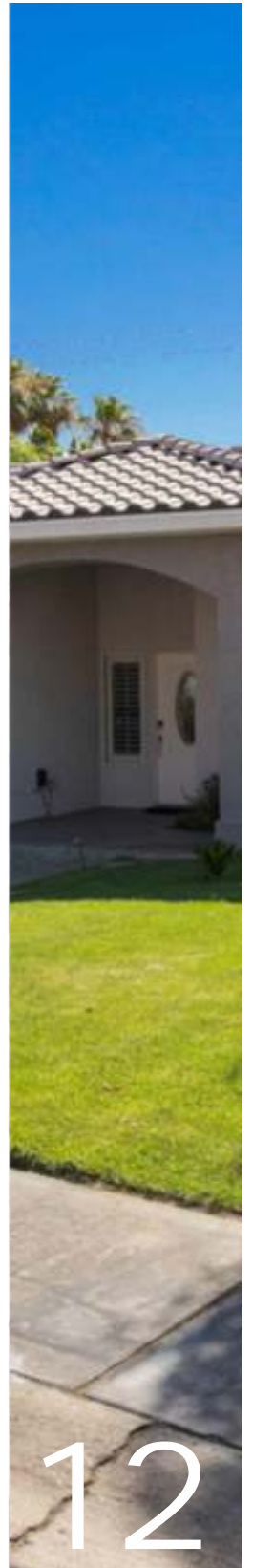
In the master bedroom walk in closet.

HAIR DRYER

In the bathrooms drawer under the sink .

GRILL UTENSILS

In the first drawer under the grill.



OUTDOOR POOL TABLE

RULE 1

- No drinks or fluids on the pool table
- The table, under no circumstances, can be used for any other game besides billiards, i.e. beer pong.

RULE 2

- Please put all pool sticks back in their spots & neatly organize the balls in a triangle form on the table.
- Please cover the table after each use.

RULE 3

- If any damage occurs the renter will be held responsible for the cost of all repairs.



GAME ROOM

ESPN ARCADE BASKETBALL GAME

4 balls.



9' ROLL & SCORE TABLE

4 rolling balls.



ESPN 60" AIR HOCKEY

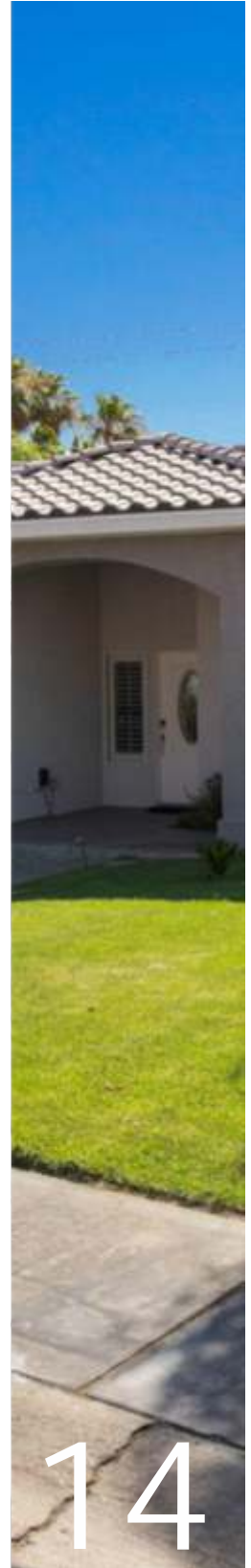
2 pucks, 2 pushers.

Please turn it OFF after each use.



OFFICIAL SIZE PING PONG TABLE

1 net, 2 Paddles & 1Ball.



14

If any missing item or damage occurs the renter will be held responsible for the cost of all repairs.

FOLLOW US ON
INSTAGRAM



@palmtini_house

PLEASE LEAVE US A REVIEW!

“

We had the best time at the Palms house. Mary thought of every detail for our stay and we will be back again!

PALM SPRING

