

CS INDUSTRIAL

Catalog

*8.20.2025 v2



CS INDUSTRIAL

Contact Details



Web: csindustrial.co

Email: customerservice@csindustrial.co

Phone: 562.404.5900

16039 Valley View Ave
Santa Fe Springs, CA 90670



Table of Contents

CS INDUSTRIAL

Products	<u>4</u>
Strut	<u>16</u>
All Thread	<u>18</u>
Strut Fittings	<u>19</u>
90° Form Fittings	<u>20</u>
Spring / Strut Nuts	<u>23</u>
EMT Pipe Clamps	<u>24</u>
Rigid Pipe Clamps	<u>24</u>
O.D. Pipe Clamps	<u>24</u>
Cushion Clamps	<u>25</u>
Beam Clamps	<u>26</u>
Pipe Straps	<u>27</u>
Clevis Hangers	<u>29</u>
Band Hangers	<u>31</u>
Spiral Duct Clamps	<u>33</u>
Miscellaneous	<u>33</u>
Riser Clamps	<u>35</u>
Wall Hanger Brackets	<u>36</u>
Mount Screws/Anchors	<u>37</u>
Product Weights	<u>40</u>
Nuts & Washers	<u>39</u>

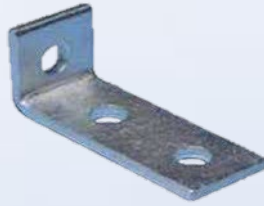


Products

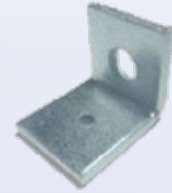
CS INDUSTRIAL



[AGA-002](#)



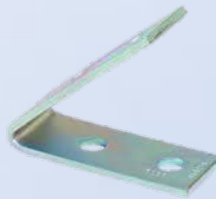
[AGA-003](#)



[AGB-002](#)



[AGC-245](#)



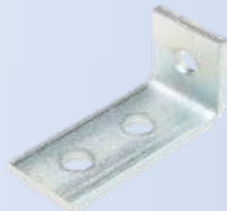
[AGC-445](#)



[AGK-038](#)



[AGL-002](#)



[AGL-003](#)



[AGL-004](#)



[AGL-038](#)



CS INDUSTRIAL

Products



AGO-245



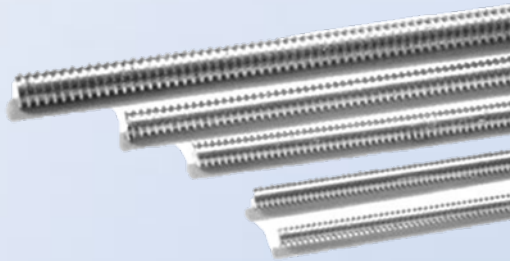
AGO-445



AGS-002



AGX-006



All Thread Rod



AXP-006



BKL-003



BKR-003



BKS-003



CS INDUSTRIAL

Products



BKT-004



BKU-003



BKU-004



BKU-005



BMS-038



BVB-012

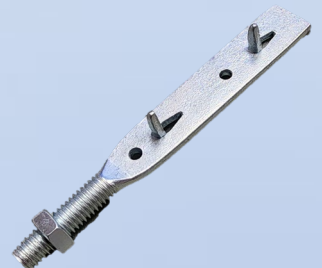
BVB-034



CFH-038



CFL-038



CFV-038



CS INDUSTRIAL

Products



[Clevis Hanger, Felt](#)



[Clevis Hanger, Plain](#)



[Clevis Hanger, Rubber](#)



[Clevis Hanger, Zinc](#)



[CLL-014](#)
[CLL-038](#)



[CLM-012](#)
[CLM-038](#)



[CLP-012](#)
[CLP-038](#)



[CLU-338](#)
[CLU-500](#)



[CLW-038](#)



Products

CS INDUSTRIAL



CRS-004



CRS-005



Cushion Clamp



DAC-###

DAE-###

DAT-###



DCC-006



DCC-008



DFL-038



DFV-038



DFZ-038



Products

CS INDUSTRIAL



DWC-008



DWC-010



ECD-001



ECS-001



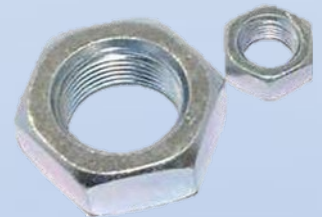
EMT Pipe Clamp



WFD-####-####



WFT-####



HEX-####



Products

CS INDUSTRIAL



Lag Bolts



LCK-###



Machine Bolts



OSP-###
OSR-###



PBD-004



PBF-002



PBS-002

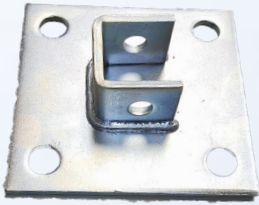


PBS-004

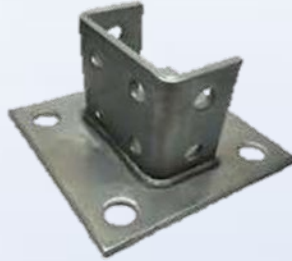


Products

CS INDUSTRIAL



PBT-004



PBW-004



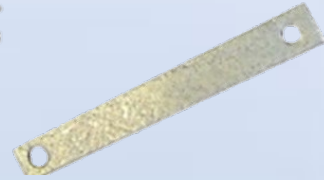
Rigid Pipe Clamp



Riser Clamps, Plain
**special order*



Riser Clamps, Zinc
**special order*



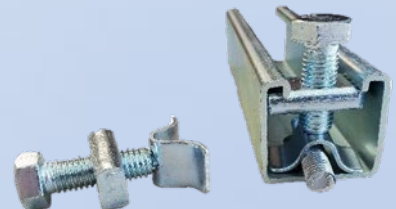
RES-010
RES-014



RSC-010



RSD-010



RST-038



Products

CS INDUSTRIAL



SBC-038



SLA-003



SLA-004



SLP-002



SLP-003



SLP-004



SLP-005



SLU-004



SMS-038



SPC-038



Products

CS INDUSTRIAL



Spiral Duct Clamp



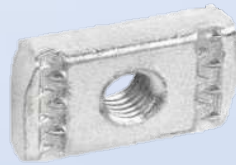
SPS-038



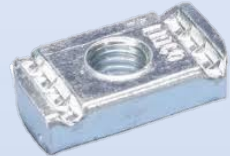
SPR-####
SPX-####



SQT-####



STN-####



STX-####



STQ-####



SVM-001



Products

CS INDUSTRIAL



Swivel Band Hanger



Swivel Band Hanger,
Felt Lined



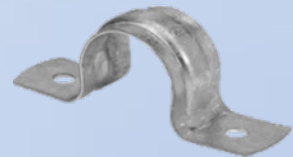
Swivel Band Hanger,
Rubber Lined



Back-to-Back Strut



Deep and Shallow Strut



TSP-###

TSR-###



CS INDUSTRIAL

Products



[Wall Hanger Kit](#)



[WHB-025](#)



Channel & All Thread

CS INDUSTRIAL

Strut

Part Number	Length (ft)	Description	Gage	Pkg Qty (pcs)
XSS-001	10	Slotted Shallow Strut (1-3/16" x 1-5/8") Pre-galvanized	14	50
XSD-001	10	Slotted Deep Strut (1-5/8" x 1-5/8") Pre-galvanized	12	50
XSD-000	10	Solid Deep Strut (1-5/8" x 1-5/8") Pre-galvanized	12	50
XSB-001	10	Back-to-Back Slotted Deep Strut Pre-galvanized	12	25

Strut Specifications

Beam Loading Data														
Span (Inch)		24	36	35	60	70	82	94	106	118	142	166	190	214
Max. Allowable Uniform Load ton force	XSS	0.27	0.18	0.13	0.11	0.09	0.08	0.07	0.06	0.05				
	XSD	0.76	0.50	0.38	0.30	0.25	0.21	0.19	0.17	0.15	0.12	0.11	0.09	0.08
Deflection at Uniform Load inch	XSS	0.30	0.60	1.00	1.60	2.20	3.10	4.00	5.00	5.70				
	XSD	0.10	0.30	0.50	0.80	1.20	1.60	2.10	2.70	3.30	4.60	6.70	8.20	10.30
Uniform Load at Span/200 Deflection ton-force	XSS	0.27	0.15	0.08	0.05	0.04	0.03	0.02	0.02	0.01				
	XSD	0.76	0.76	0.42	0.27	0.19	0.14	0.11	0.08	0.07	0.1	0.04	0.03	0.02
Column Loading Data														
Unbraced Height (Inch)		24	36	35	60	70	82	94	106	118	142	166	190	214
Max. Allowable Lateral Load ton force	XSS	0.94	0.08	0.62	0.48	0.38								
	XSD	1.51	1.33	1.14	0.99	0.88	0.78	0.7	0.64	0.57				

CS Industrial pre-galvanized channels are cold roll formed to size from low-carbon strip steel. Our pre-galvanized steel is zinc coated through a hot dip process. Large coils of steel strip are fed through a continuous zinc coating machine which cleans, fluxes and coats the steel with molten zinc. The steel is cooled and recoiled then cold roll formed into our strut.

Our pre-galvanized zinc coating conforms to a G-90 thickness designation per ASTM A653.

CS Industrial standard length is 10 feet (3.05m)

Length Tolerances are +1/8" (3.2mm) to +1/2" (12.7mm) to allow for cutting.

Zinc Plating thickness is 0.75 MIL or 0.45 oz./sq. ft. of surface area.



Channel & All Thread

CS INDUSTRIAL

Channel & All Thread

Strut Fittings & Nuts

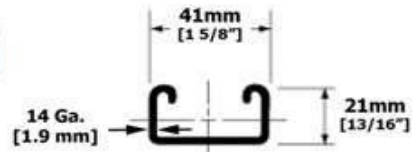
Clamps, Straps & Others

Clevis & Band Hangers

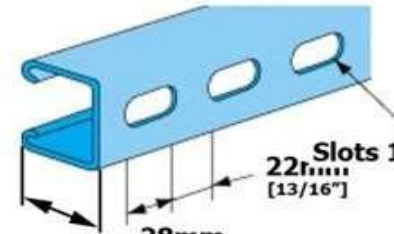
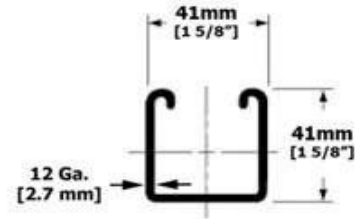
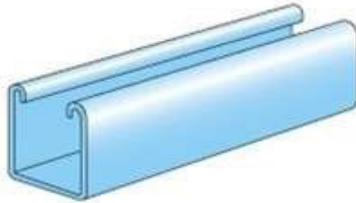
Roof Supports, Duct Clamps, & Misc.

Screws, Bolts & Anchors

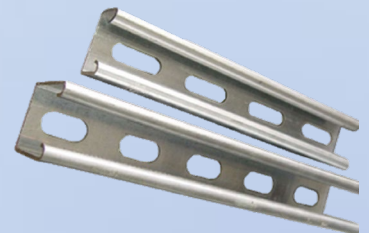
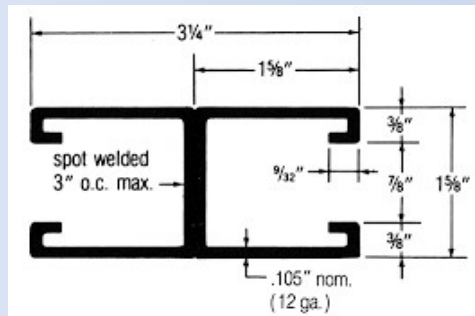
XSS



XSD



Back-to-Back Strut



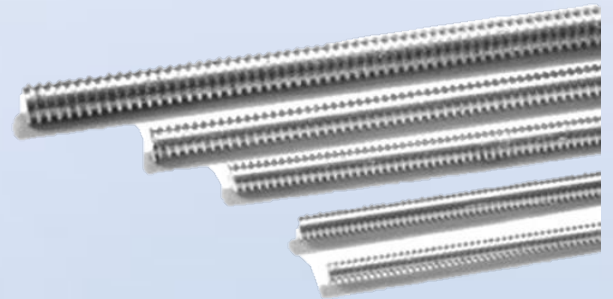
Deep and Shallow Strut



Channel & All Thread

All Thread Rod

Part Number	Description	Max Load (lbs)	Pkg Qty (pcs)
ATR-014	All Thread Rod 1/4"//20 (50 x10ft/bundle)	240	50
ATR-038	All Thread Rod 3/8"//16 (25x10ft/bundle)	610	25
ATR-012	All Thread Rod 1/2"//13 (12x10ft/bundle)	1,130	12
ATR-058	All Thread Rod 5/8"//11 (8x10ft/bundle)	1,810	8
ATR-034	All Thread Rod 3/4"//10 (5x10ft/bundle)	2,710	5



CS Industrial All Thread is cold thread rolled from low carbon steel, heat-treated and zinc plated into International Standard Class 4.8 threaded rod, with Unified Thread Standard (UTS) Class 1A threads.

CS Industrial standard lengths are 10 feet (3.05m).
 Length Tolerances are +1/8" (3.2mm) to +1/2" (12.7mm) to allow for cutting.
 Zinc Plating thickness is 0.75 MIL or 0.45 oz./sq. ft. of surface area.

Channel & All Thread

Structural Fittings & Nuts

Clamps, Straps & Others

Clevis & Band Hangers

Roof Supports, Duct Clamps, & Misc.

Screws, Bolts, & Anchors



Strut Fittings & Nuts

CS INDUSTRIAL

Flat Fittings

Part Number	Description	Pkg Qty
SQW-014	Square Channel Washer 1/4"	100
SQW-038	Square Channel Washer 3/8"	100
SQW-012	Square Channel Washer 1/2"	100
SQW-058	Square Channel Washer 5/8"	100
SQW-034	Square Channel Washer 3/4"	100
SQT-038	No Twist Square Channel Washer 3/8"	100
SQT-012	No Twist Square Channel Washer 1/2"	100
SQT-058	No Twist Square Channel Washer 5/8"	100
CRS-004	4 Hole Flat "T" Cross Plate	50
CRS-005	5 Hole Flat Cross Plate	25
SLP-002	2 Hole Splice Plate (3-1/4")	50
SLP-003	3 Hole Splice Plate (5-3/8")	50
SLP-004	4 Hole Splice Plate (7-3/8")	50
SLP-005	5 Hole Splice Plate (9-1/8")	50
SLA-003	3 Hole Flat Angle Splice Plate	50
SLA-004	4 Hole Flat Angle Splice Plate	50
ECD-001	End Cap Deep Strut (Black)	100
ECD-002	End Cap Shallow Strut (Black)	100



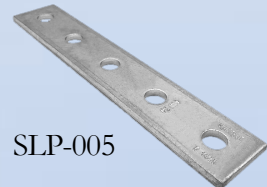
SLP-002



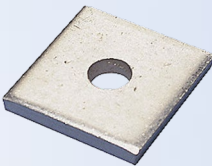
SLP-003



SLP-004



SLP-005



SQW-###



SQT-###



CRS-004



CRS-005



SLA-003



SLA-004



ECD-001



ECD-002

Channel & All Thread

Strut Fittings & Nuts

Clamps, Straps & Others

Clevis & Band Hangers

Roof Supports, Duct Clamps, & Misc.

Screws, Bolts, & Anchors



Strut Fittings & Nuts

CS INDUSTRIAL

Formed Fittings 90 Degree

Part Number	Description	Pkg Qty
AGL-002	2 Hole Corner Angle Bracket 1/2" (1-7/8 X 2-1/16)	100
AGL-038	2 Hole Corner Angle Bracket 3/8" (1-7/8 X 2-1/16)	100
AGA-002	2 Hole Corner Angle Bracket 1/2" (1-5/8 X 2-1/4)	100
AGB-002	2 Hole Corner Angle Bracket 1/2" (1-5/8 X 1-7/8-5/16 Threaded)	100
AGS-002	1 Hole 1 Slot Corner Angle Bracket 1/2" (1-5/8 X 2-5/8)	50
AGL-003	3 Hole Corner Angle Bracket 1/2" (1-7/8 X 3-7/8)	50
AGA-003	3 Hole Corner Angle Bracket 1/2" (1-5/8 X 4-1/8)	50
BKL-003	3 Hole Offset Angle Bracket Bent Left Hand 1/2"	50
BKR-003	3 Hole Offset Angle Bracket Bent Right Hand 1/2"	50
AGL-004	4 Hole Corner Angle Bracket 1/2" (3-1/2 X 4-1/8)	50
AXP-006	2 Hole Corner Angle Bracket 1/2" with 4 Holes 3/8"	50
AGX-006	2 Hole Corner Angle Bracket 1/2" with 4 Holes 3/8"	50



AGL-002



AGL-038



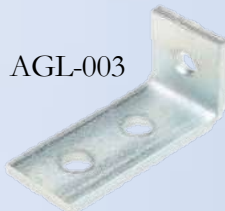
AGA-002



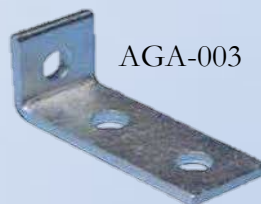
AGB-002



AGS-002



AGL-003



AGA-003



AGL-004



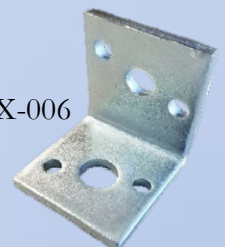
BKL-003



BKR-003



AXP-006



AGX-006

Channel & All Thread

Strut Fittings & Nuts

Clamps, Straps & Others

Clevis & Band Hangers

Roof Supports, Duct Clamps, & Misc.

Screws, Bolts & Anchors

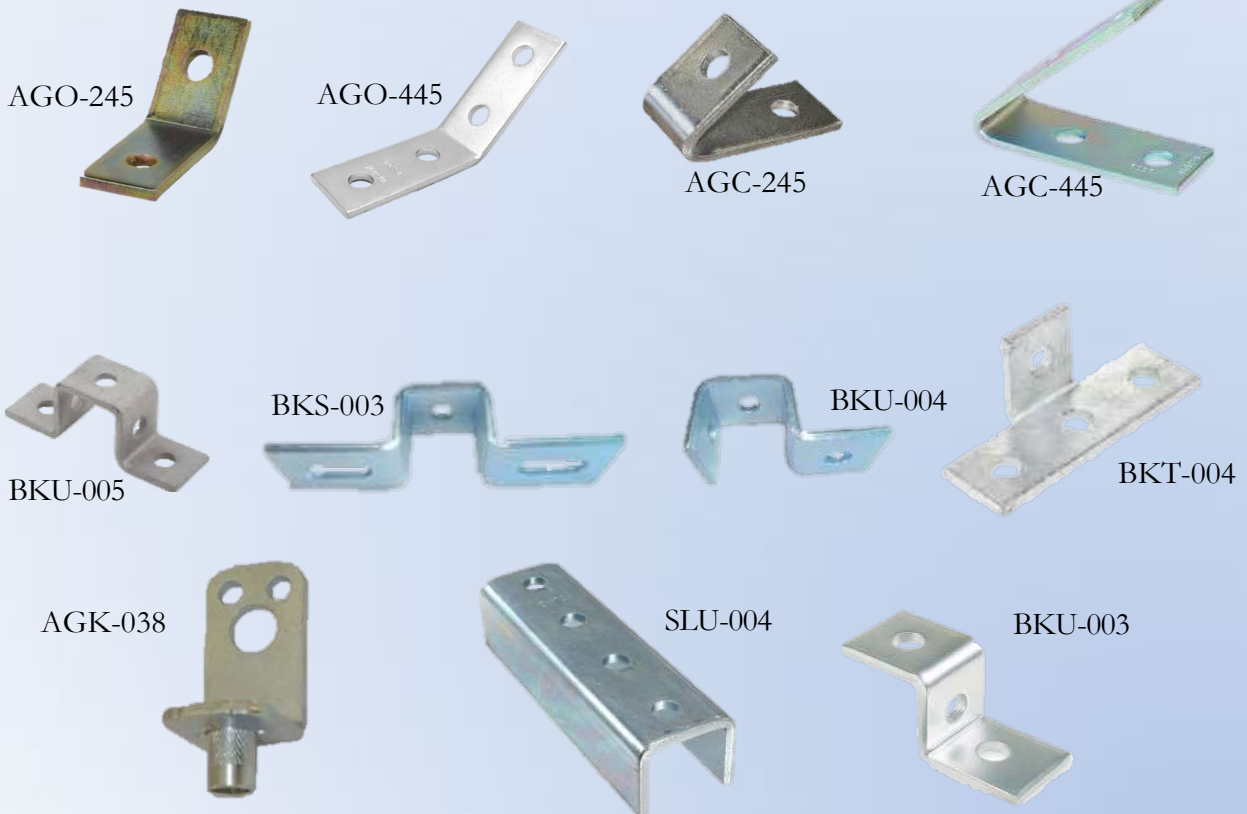


Strut Fittings & Nuts

CS INDUSTRIAL

Formed Fittings

Part Number	Description	Pkg Qty
AGO-245	2 Hole (135 Degrees) Open Corner Angle Bracket 1/2" (2-5/16 X 3)	50
AGO-445	4 Hole (135 Degrees) Open Corner Angle Bracket 1/2" (3-1/2 X 3-1/2)	50
AGC-245	2 Hole Closed Corner Angle Bracket 1/2" (2-5/16 X 3)	50
AGC-445	4 Hole Closed Corner Angle Bracket 1/2" (4-9/16 X 4-9/16)	25
BKU-005	5 Hole "U" Bracket 1/2" (1-5/8)	50
BKS-003	1 Hole 2 Slot "U" Bracket 1/2" (1-5/8)	50
BKU-004	4 Hole "U" Bracket Cup 1/2"	50
BKT-004	4 Hole (90 Degrees) Offset "T" Angle Bracket Bent	50
AGK-038	Corner Angle Bracket 3/8" (Thread Knurled)	50
SLU-004	4 Hole Clevis "U" Splice Plate (1-5/8")	10
BKU-003	3 Hole "U" Bracket "Z" Support	50



Channel & All Thread

Strut Fittings & Nuts

Clamps, Straps & Others

Clevis & Band Hangers

Roof Supports, Duct Clamps, & Misc.

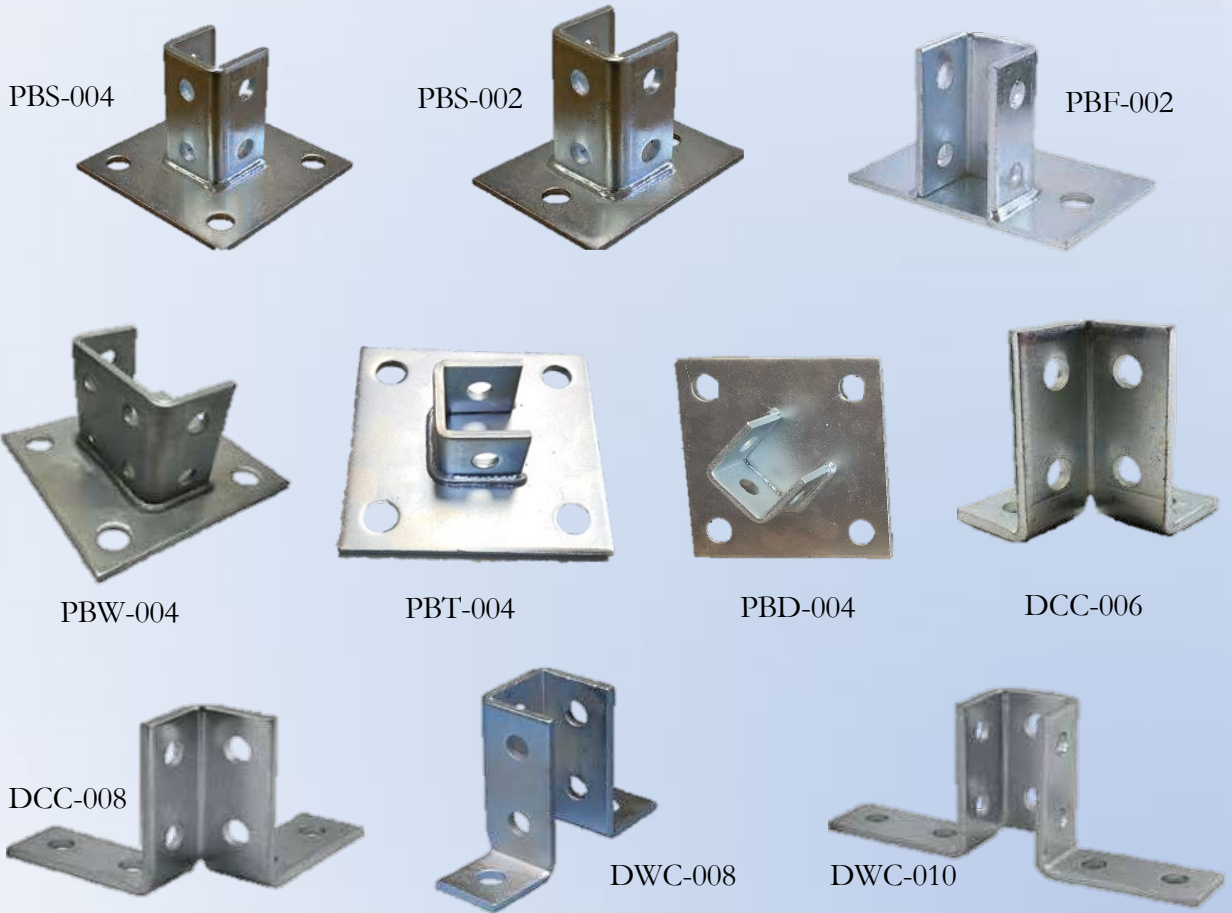
Screws, Bolts & Anchors



Strut Fittings & Nuts

Strut Post Base - Support Brackets

Part Number	Description	Pkg Qty
PBS-004	4 Hole Square Post Base	10
PBS-002	2 Hole Post Base	10
PBF-002	2 Hole Flush Post Base	10
PBW-004	4 Hole Square Post Base (Double Wide)	10
PBD-004	4 Hole Diagonal Truncated Square Post Base (1-5/8")	10
PBT-004	4 Hole Truncated Square Post Base (1-5/8")	10
DCC-006	6 Hole Double Corner Connector	20
DCC-008	8 Hole Double Corner Connector	20
DWC-008	8 Hole Double Wing Connector	20
DWC-010	10 Hole Double Wing Connector	20



Channel & All Thread

Strut Fittings & Nuts

Clamps, Straps & Others

Clevis & Band Hangers

Roof Supports, Duct Clamps, & Misc.

Screws, Bolts, & Anchors



Strut Fittings & Nuts

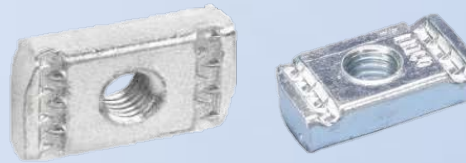
CS INDUSTRIAL

Spring Nuts/Strut Nuts

Part Number	Description	Pkg Qty
SPR-014	Spring Nut 1/4"	100
SPR-038	Spring Nut 3/8"	100
SPR-012	Spring Nut 1/2" (3/8" Thick)	100
SPX-012	Spring Nut 1/2" (1/2" Thick)	100
SPR-058	Spring Nut 5/8"	100
STN-014	Strut Nut 1/4"	100
STN-038	Strut Nut 3/8"	100
STN-012	Strut Nut 1/2"	100
STN-058	Strut Nut 5/8"	100
SPS-014	Shallow Strut Spring Nut 1/4"	100
SPS-038	Shallow Strut Spring Nut 3/8"	100
SPS-012	Shallow Strut Spring Nut 1/2"	100
STQ-014	Squeeze Nut 1/4"	100
STQ-038	Squeeze Nut 3/8"	100
STQ-012	Squeeze Nut 1/2"	100
SPC-014	Cone Spring Strut Nut 1/4"	100
SPC-038	Cone Spring Strut Nut 3/8"	100
SPC-012	Cone Spring Strut Nut 1/2"	100
RST-038	Rod Stiffener 3/8" - 5/8"	60



SPR-###
SPX-###



STN-###
STX-###



SPS-###



STQ-###



SPC-###



RST-038

Channel & All Thread

Strut Fittings & Nuts

Clamps, Straps & Others

Clevis & Band Hangers

Roof Supports, Duct Clamps, & Misc.

Screws, Bolts & Anchors



Clamps, Straps & Others

CS INDUSTRIAL

EMT Pipe Clamps

Part Number	Description	Load lbs	Pkg Qty
EMT-012	EMT Pipe Clamp 1/2"	400	100
EMT-034	EMT Pipe Clamp 3/4"	400	100
EMT-100	EMT Pipe Clamp 1"	600	100
EMT-114	EMT Pipe Clamp 1-1/4"	600	100
EMT-112	EMT Pipe Clamp 1-1/2"	800	50
EMT-200	EMT Pipe Clamp 2"	800	50



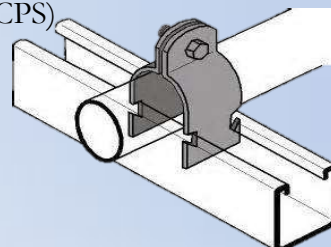
Rigid Pipe Clamps

Part Number	Description	Load lbs	Pkg Qty
RIG-012	Rigid Pipe Clamp 1/2"	400	100
RIG-034	Rigid Pipe Clamp 3/4"	600	100
RIG-100	Rigid Pipe Clamp 1"	600	100
RIG-114	Rigid Pipe Clamp 1-1/4"	600	100
RIG-112	Rigid Pipe Clamp 1-1/2"	800	50
RIG-200	Rigid Pipe Clamp 2"	800	50
RIG-212	Rigid Pipe Clamp 2-1/2"	800	50
RIG-300	Rigid Pipe Clamp 3"	800	50
RIG-312	Rigid Pipe Clamp 3-1/2"	1,000	50
RIG-400	Rigid Pipe Clamp 4"	1,000	50
RIG-600	Rigid Pipe Clamp 6"	1,000	50



O.D. Pipe Clamps

Part Number	Description	Load lbs	Pkg Qty
ODC-058	OD Pipe Clamp 5/8" (1/2" CPS)	400	100
ODC-078	OD Pipe Clamp 7/8" (3/4" CPS)	400	100
ODC-118	OD Pipe Clamp 1-1/8" (1" CPS)	600	250
ODC-138	OD Pipe Clamp 1-3/8" (1-1/4" CPS)	600	200
ODC-158	OD Pipe Clamp 1-5/8" (1-1/2" CPS)	600	150
ODC-218	OD Pipe Clamp 2-1/8" (2" CPS)	800	150
ODC-258	OD Pipe Clamp 2-5/8" (2-1/2" CPS)	800	100
ODC-318	OD Pipe Clamp 3-1/8" (3" CPS)	800	50
ODC-418	OD Pipe Clamp 4-1/8" (4" CPS)	1,000	25



Channel & All Thread

Struct Fittings & Nuts

Clamps, Straps & Others

Clevis & Band Hangers

Roof Supports, Duct Clamps, & Misc.

Screws, Bolts, & Anchors



Clamps, Straps & Others

Cushion Clamps

Part Number	Description	Load lbs	Pkg Qty
CSH-014	Cushion Clamp OD 1/4"	300	250
CSH-038	Cushion Clamp OD 3/8"	400	100
CSH-012	Cushion Clamp OD 1/2"	400	100
CSH-058	Cushion Clamp OD 5/8"	400	125
CSH-034	Cushion Clamp OD 3/4"	400	125
CSH-078	Cushion Clamp OD 7/8"	400	125
CSH-118	Cushion Clamp OD 1-1/8"	600	125
CSH-138	Cushion Clamp OD 1-3/8"	600	125
CSH-158	Cushion Clamp OD 1-5/8"	600	40
CSH-218	Cushion Clamp OD 2-1/8"	700	70
CSH-258	Cushion Clamp OD 2-5/8"	700	30
CSH-318	Cushion Clamp OD 3-1/8"	700	40
CSH-418	Cushion Clamp OD 4-1/8"	900	25



CS Industrial cushion clamps are made by stamping low-carbon strip steel. The steel is zinc plated with a yellow di-chromate anti-corrosion treatment. Our zinc plating conforms to a G-90 thickness designation per ASTM A653. These clamps are well suited for absorbing shock, reducing vibration, eliminating unwanted noise and preventing galvanic corrosion between various pipe materials and the steel clamps. Specially designed protrusions lock the cushion into the strut to ensure vibrations do not move the clamp.

Channel & All Thread

Strut Fittings & Nuts

Clamps, Straps & Others

Clevis & Band Hangers

Roof Supports, Duct Clamps, & Misc.

Screws, Bolts & Anchors



Clamps, Straps & Others

Beam Clamps

Part Number	Description	Max Load (lbs)	Pkg Qty
CLP-038	Plain Malleable Beam Clamp 3/8"	400	100
CLP-012	Plain Malleable Beam Clamp 1/2"	500	100
CLM-038	Malleable Beam Clamp 3/8"	400	100
CLM-012	Malleable Beam Clamp 1/2"	500	100
CLW-038	Malleable Beam Clamp 3/8" (Wide)	400	100
CLL-014	Light Duty Beam Clamp 1/4"	75	100
CLL-038	Light Duty Beam Clamp 3/8"	300	100
CLU-338	"U" Bolt Beam Clamp 3-3/8"	1,000	50
CLU-500	"U" Bolt Beam Clamp 5"	1,000	50
RES-010	Retaining Strap 10" (3/8" or 1/2")	N/A	100
RES-014	Retaining Strap 14" (3/8" or 1/2")	N/A	100
SBC-038	Side Beam Connector 3/8"	N/A	N/A
CFH-038	Horizontal Ceiling Flange 3/8" Stud	N/A	50
CFL-038	Ceiling Flange 3/8"	N/A	100
CFV-038	Vertical Side Beam Ceiling Flange 3/8" Stud	N/A	50



CLP-038



CLM-038 CLM-012



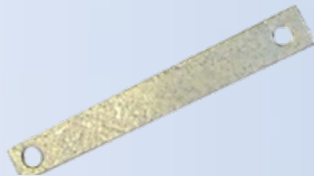
CLW-038



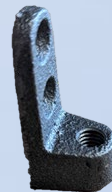
CLL-014 CLL-038



CLU-338 CLU-500



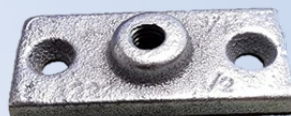
RES-010 RES-014



SBC-038



CFH-038



CFL-038



CFV-038

Channel & All Thread

Strut Fittings & Nuts

Clamps, Straps & Others

Clevis & Band Hangers

Roof Supports, Duct Clamps, & Misc.

Screws, Bolts & Anchors



Clamps, Straps & Others

CS INDUSTRIAL

Pipe Straps - EMT / Rigid

Part Number	Description	Finish	Pkg Qty
OSP-012	One Hole Strap 1/2" (EMT)	EG	200
OSP-034	One Hole Strap 3/4" (EMT)	EG	150
OSP-100	One Hole Strap 1" (EMT)	EG	100
OSP-114	One Hole Strap 1-1/4" (EMT)	EG	50
OSP-112	One Hole Strap 1-1/2" (EMT)	EG	50
OSP-200	One Hole Strap 2" (EMT)	EG	25
TSP-038	Two Hole Strap 3/8" (EMT)	EG	100
TSP-012	Two Hole Strap 1/2" (EMT)	EG	100
TSP-034	Two Hole Strap 3/4" (EMT)	EG	100
TSP-100	Two Hole Strap 1" (EMT)	EG	50
TSP-114	Two Hole Strap 1-1/4" (EMT)	EG	50
TSP-112	Two Hole Strap 1-1/2" (EMT)	EG	25
TSP-200	Two Hole Strap 2" (EMT)	EG	20



TSP



OSP

Channel & All Thread

Strut Fittings & Nuts

Clamps, Straps & Others

Clevis & Band Hangers

Roof Supports, Duct Clamps, & Misc.

Screws, Bolts, & Anchors



Clamps, Straps & Others

Pipe Straps - EMT / Rigid

Part Number	Description	Finish	Pkg Qty
OSR-012	One Hole Strap 1/2" (Rigid)	EG	100
OSR-034	One Hole Strap 3/4" (Rigid)	EG	100
OSR-100	One Hole Strap 1" (Rigid)	EG	50
OSR-114	One Hole Strap 1-1/4" (Rigid)	EG	50
OSR-112	One Hole Strap 1-1/2" (Rigid)	EG	25
OSR-200	One Hole Strap 2" (Rigid)	EG	20
OSR-212	One Hole Strap 2-1/2" (Rigid)	EG	20
OSR-300	One Hole Strap 3" (Rigid)	EG	10
OSR-312	One Hole Strap 3-1/2" (Rigid)	EG	10
OSR-400	One Hole Strap 4" (Rigid)	EG	10
TSR-012	Two Hole Strap 1/2" (Rigid)	EG	100
TSR-034	Two Hole Strap 3/4" (Rigid)	EG	100
TSR-100	Two Hole Strap 1" (Rigid)	EG	50
TSR-114	Two Hole Strap 1-1/4" (Rigid)	EG	25
TSR-112	Two Hole Strap 1-1/2" (Rigid)	EG	20
TSR-200	Two Hole Strap 2" (Rigid)	EG	10
TSR-212	Two Hole Strap 2-1/2" (Rigid)	EG	10
TSR-300	Two Hole Strap 3" (Rigid)	EG	10
TSR-312	Two Hole Strap 3-1/2" (Rigid)	EG	10
TSR-400	Two Hole Strap 4" (Rigid)	EG	10



OSR



TSR

Channel & All Thread

Strut Fittings & Nuts

Clamps, Straps & More

Clevis & Band Hangers

Roof Supports, Duct Clamps, & Misc.

Screws, Bolts, & Anchors



Clevis & Band Hangers

Clevis Hangers - Plain

Part Number	Description	Load (lbs)	Pkg Qty
CHP-012	Plain Clevis Hanger 1/2"	150	50
CHP-034	Plain Clevis Hanger 3/4"	150	50
CHP-100	Plain Clevis Hanger 1"	250	50
CHP-114	Plain Clevis Hanger 1-1/4"	250	50
CHP-112	Plain Clevis Hanger 1-1/2"	250	50
CHP-200	Plain Clevis Hanger 2"	250	50
CHP-212	Plain Clevis Hanger 2-1/2"	350	25
CHP-300	Plain Clevis Hanger 3"	350	25
CHP-400	Plain Clevis Hanger 4"	500	25
CHP-500	Plain Clevis Hanger 5"	600	25
CHP-600	Plain Clevis Hanger 6"	800	10



Clevis Hangers - Plated

Part Number	Description	Load (lbs)	Pkg Qty
CHZ-012	Clevis Hanger 1/2"	150	50
CHZ-034	Clevis Hanger 3/4"	150	50
CHZ-100	Clevis Hanger 1"	250	50
CHZ-114	Clevis Hanger 1-1/4"	250	50
CHZ-112	Clevis Hanger 1-1/2"	250	50
CHZ-200	Clevis Hanger 2"	250	50
CHZ-212	Clevis Hanger 2-1/2"	350	25
CHZ-300	Clevis Hanger 3"	350	25
CHZ-400	Clevis Hanger 4"	500	250
CHZ-500	Clevis Hanger 5"	600	25
CHZ-600	Clevis Hanger 6"	800	10
CHZ-800	Clevis Hanger 8"	1,200	10



Channel & All Thread

Strut Fittings & Nuts

Clamps, Straps & Others

Clevis & Band Hangers

Roof Supports, Duct Clamps, & Misc.

Screws, Bolts, & Anchors



Clevis & Band Hangers

Plain Clevis Hangers - Felt Lined

Part Number	Description	Load (lbs)	Pkg Qty
CPF-012	Felted Plain Clevis Hanger 1/2"	150	50
CPF-034	Felted Plain Clevis Hanger 3/4"	150	50
CPF-100	Felted Plain Clevis Hanger 1"	250	50
CPF-114	Felted Plain Clevis Hanger 1-1/4"	250	50
CPF-112	Felted Plain Clevis Hanger 1-1/2"	250	50
CPF-200	Felted Plain Clevis Hanger 2"	250	50
CPF-212	Felted Plain Clevis Hanger 2-1/2"	350	25
CPF-300	Felted Plain Clevis Hanger 3"	350	25
CPF-400	Felted Plain Clevis Hanger 4"	500	25
CPF-600	Felted Plain Clevis Hanger 6"	800	10



Clevis Hangers - Rubber Lined

Part Number	Description	Load (lbs)	Pkg Qty
CHR-012	Rubber Clevis Hanger 1/2"	150	50
CHR-034	Rubber Clevis Hanger 3/4"	150	50
CHR-100	Rubber Clevis Hanger 1"	250	50
CHR-114	Rubber Clevis Hanger 1-1/4"	250	50
CHR-112	Rubber Clevis Hanger 1-1/2"	250	50
CHR-200	Rubber Clevis Hanger 2"	250	50
CHR-212	Rubber Clevis Hanger 2-1/2"	350	25
CHR-300	Rubber Clevis Hanger 3"	350	25
CHR-400	Rubber Clevis Hanger 4"	500	25
CHR-600	Rubber Clevis Hanger 6"	800	10

Temperature Range -40 F to 220 F



Channel & All Thread

Strut Fittings & Nuts

Clamps, Straps & Others

Clevis & Band Hangers

Roof Supports, Duct Clamps, & Misc.

Screws, Bolts, & Anchors



Clevis & Band Hangers

Swivel Band Hangers

Part Number	Description	Max Rec	Pkg Qty
BHS-012	Swivel Band Hanger 1/2"	400	100
BHS-034	Swivel Band Hanger 3/4"	400	100
BHS-100	Swivel Band Hanger 1"	400	100
BHS-114	Swivel Band Hanger 1-1/4"	400	100
BHS-112	Swivel Band Hanger 1-1/2"	400	100
BHS-200	Swivel Band Hanger 2"	400	100
BHS-212	Swivel Band Hanger 2-1/2"	600	60
BHS-300	Swivel Band Hanger 3"	600	40
BHS-312	Swivel Band Hanger 3-1/2"	600	30
BHS-400	Swivel Band Hanger 4"	1,000	20
BHS-600	Swivel Band Hanger 6"	1,250	20
BHS-800	Swivel Band Hanger 8"	1,250	20



Swivel Band Hangers - Felt Lined

Part Number	Description	Max Rec	Pkg Qty
BHF-012	Felted Swivel Band Hanger 1/2"	400	100
BHF-034	Felted Swivel Band Hanger 3/4"	400	100
BHF-100	Felted Swivel Band Hanger 1"	400	100
BHF-114	Felted Swivel Band Hanger 1-1/4"	400	100
BHF-112	Felted Swivel Band Hanger 1-1/2"	400	50
BHF-200	Felted Swivel Band Hanger 2"	400	50
BHF-212	Felted Swivel Band Hanger 2-1/2"	600	20
BHF-300	Felted Swivel Band Hanger 3"	600	20
BHF-312	Felted Swivel Band Hanger 3-1/2"	600	20
BHF-400	Felted Swivel Band Hanger 4"	1,000	20



Channel & All Thread

Strut Fittings & Nuts

Clamps, Straps & Others

Clevis & Band Hangers

Roof Supports, Duct Clamps, & Misc.

Screws, Bolts & Anchors



Clevis & Band Hangers

Swivel Band Hangers - Rubber Lined

Part Number	Description	Max Rec	Pkg Qty
BHR-012	Rubber Swivel Band Hanger 1/2"	400	100
BHR-034	Rubber Swivel Band Hanger 3/4"	400	100
BHR-100	Rubber Swivel Band Hanger 1"	400	100
BHR-114	Rubber Swivel Band Hanger 1-1/4"	400	100
BHR-112	Rubber Swivel Band Hanger 1-1/2"	400	50
BHR-200	Rubber Swivel Band Hanger 2"	400	50
BHR-212	Rubber Swivel Band Hanger 2-1/2"	600	20
BHR-300	Rubber Swivel Band Hanger 3"	600	20
BHR-312	Rubber Swivel Band Hanger 3-1/2"	600	20
BHR-400	Rubber Swivel Band Hanger 4"	1,000	20

Temperature Range -40 F to 220 F



Channel & All Thread

Strut Fittings & Nuts

Clamps, Straps & Others

Clevis & Band Hangers

Roof Supports, Duct Clamps, & Misc.

Screws, Bolts, & Anchors



Roof Supports, Spiral Duct Clamps, & Misc.

Spiral Duct Clamp

Part Number	Description	Pkg Qty
SDC-004	Spiral Duct Clamp 4" (Cushioned)	50
SDC-005	Spiral Duct Clamp 5" (Cushioned)	50
SDC-006	Spiral Duct Clamp 6" (Cushioned)	50
SDC-007	Spiral Duct Clamp 7" (Cushioned)	50
SDC-008	Spiral Duct Clamp 8" (Cushioned)	30
SDC-009	Spiral Duct Clamp 9" (Cushioned)	25
SDC-010	Spiral Duct Clamp 10" (Cushioned)	25
SDC-012	Spiral Duct Clamp 12" (Cushioned)	20
SDC-014	Spiral Duct Clamp 14" (Cushioned)	20
SDC-016	Spiral Duct Clamp 16" (Cushioned)	20
SDC-018	Spiral Duct Clamp 18" (Cushioned)	20
SDC-020	Spiral Duct Clamp 20" (Cushioned)	16
SDC-022	Spiral Duct Clamp 22" (Cushioned)	20
SDC-024	Spiral Duct Clamp 24" (Cushioned)	20



TEMPORARILY OUT OF STOCK

Miscellaneous

Part Number	Description	Pkg Qty
DFZ-038	Duct Fixing "Z" Bracket with Pad 3/8"	100
DFL-038	Duct Fixing "L" Bracket with Pad 3/8"	100
DFV-038	Duct Fixing "V" Bracket with Pad 3/8"	100
SVM-001	Strut Vibration Dampening Mount	Per Request
BVB-012	Ball Valve 1/2" (Brass)	10
BVB-034	Ball Valve 3/4" (Brass)	10
WHB-025	Wall Hanger Bracket 25"	Each



DFZ-038



DFL-038



DFV-038



SVM-001



BVB-012
BVB-034



WHB-025

Channel & All Thread

Strut Fittings & Nuts

Clamps, Straps & Others

Clevis & Band Hangers

Roof Supports, Duct Clamps, & Misc.

Screws, Bolts, & Anchors



Roof Supports, Spiral Duct Clamps, & Misc.

RSD-010 Roof Supports

Universal Support Block



- Fully compatible with all types of strut components
- Simple pyramid design creates stable platform and load bearing capacity
- Provides superior load distribution, even for uneven surfaces
- Rubber base offers low abrasion interface with membrane roofs
- 9 8" long x 4 13/16" high x 6" wide
- 9 8" Strut channel included



Features

- Dampens vibrations
- Will not float
- Outlasts your roof
- UV resistant
- Drainage channel
- Reflector for added visibility and safety
- 14g strut
- 1 5/8" wide x 13/16th
- High pre-galvanized slotted strut



Sustainability

- Made from 100% recycled rubber
- May contribute to L.E.E.D. credits



Installation and Maintenance

- Simple and fast to install
- Maintenance free and no roof abrasion



Applications

- Rooftop pipes
- Electrical conduits
- Ducting
- Walkway support
- Air conditioning
- Solar installations

Product Specifications

Product Name	Dimensions L x H x W	Weight	Part #	Load Rating	Quantity/Skid
Universal Support Block with Strut Channel	9.8" x 4 13/16" x 6"	4.85 lbs.	RSD-010	500lbs	252

Part Number	Description	Pkg Qty
RSC-010	Roof Support // Plain // 10"	Each
RSD-010	Roof Support // Reflectors // 10"	Each

Channel & All Thread

Strut Fittings & Nuts

Clamps, Straps & Others

Clevis & Band Hangers

Roof Supports, Duct Clamps, & Misc.

Screws, Bolts & Anchors



Roof Supports, Spiral Duct Clamps, & Misc.

Riser Clamps - Plain

Part Number	Description	Pkg Qty
RIS-012	Plain Riser Clamp 1/2"	Per Request
RIS-034	Plain Riser Clamp 3/4"	Per Request
RIS-100	Plain Riser Clamp 1"	Per Request
RIS-114	Plain Riser Clamp 1-1/4"	Per Request
RIS-112	Plain Riser Clamp 1-1/2"	Per Request
RIS-200	Plain Riser Clamp 2"	Per Request
RIS-212	Plain Riser Clamp 2-1/2"	Per Request
RIS-300	Plain Riser Clamp 3"	Per Request
RIS-400	Plain Riser Clamp 4"	Per Request
RIS-600	Plain Riser Clamp 6"	Per Request



Riser Clamps - Zinc

Part Number	Description	Pkg Qty
RIZ-012	Riser Clamp 1-2"	Per Request
RIZ-034	Riser Clamp 3/4"	Per Request
RIZ-100	Riser Clamp 1"	Per Request
RIZ-114	Riser Clamp 1-1/4"	Per Request
RIZ-112	Riser Clamp 1-1/2"	Per Request
RIZ-200	Riser Clamp 2"	Per Request
RIZ-212	Riser Clamp 2-1/2"	Per Request
RIZ-300	Riser Clamp 3"	Per Request
RIZ-400	Riser Clamp 4"	Per Request
RIZ-600	Riser Clamp 6"	Per Request
RIZ-800	Riser Clamp 8"	Per Request



Channel & All Thread

Strut Fittings & Nuts

Clamps, Straps & Others

Clevis & Band Hangers

Roof Supports, Duct Clamps, & Misc.

Screws, Bolts & Anchors



CS INDUSTRIAL

Roof Supports, Spiral Duct Clamps, & Misc.

Wall Hanger Bracket Kit

Part Number	Description	Pkg Qty	Max Rec
WHK-025	Wall Hanger Kit 25" (Assembly)	Per Request	337 lbs



Channel & All Thread

Strut Fittings & Nuts

Clamps, Straps & Others

Clevis & Band Hangers

Roof Supports, Duct Clamps, & Misc.

Screws, Bolts, & Anchors



Screws, Bolts, & Anchors

Mount Screws/Anchors

Part Number	Description	Pkg Qty
BMS-038	Bottom Mount Screw Wood Fastener 3/8" (2" Screw)	700 or 100
SMS-038	Side Mount Screw Wood Fastener 3/8" (2" Screw)	700 or 100
DAE-038	Drop Anchor 3/8" (15/32" Diameter)	50
DAC-038	Drop Anchor 3/8" (1/2" Diameter)	50
DAC-012	Drop Anchor 1/2"	50

BMS-038



SMS-038



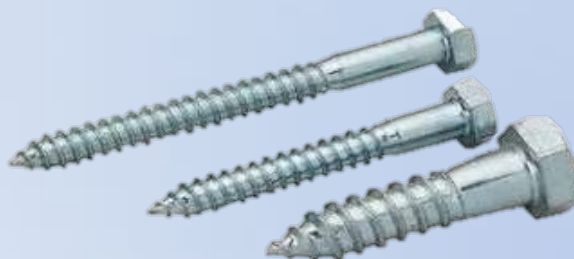
DAE-XXX
DAC-XXX



Lag Bolts

Part Number	Description	Pkg Qty
LGS-014-112	Lag Screw 1/4 X 1-1/2"	100/1,000/2,000
LGS-014-200	Lag Screw 1/4 X 2"	100/1,000/2,000
LGS-014-212	Lag Screw 1/4 X 2-1/2"	100/1,000/2,000
LGS-014-300	Lag Screw 1/4 X 3"	100/1,000/2,000
LGS-038-112	Lag Screw 3/8 X 1-1/2"	100/1,000/2,000
LGS-038-200	Lag Screw 3/8 x 2"	100/1,000/2,000
LGS-038-212	Lag Screw 3/8 X 2-1/2"	100/1,000/2,000
LGS-038-300	Lag Screw 3/8 X 3"	100/1,000/2,000

Other Sizes Available



Channel & All Thread

Strut Fittings & Nuts

Clamps, Straps & Others

Clevis & Band Hangers

Roof Supports, Duct Clamps, & Misc.

Screws, Bolts, & Anchors



Screws, Bolts, & Anchors

Machine Bolts

Part Number	Description	Pkg Qty
MBT-014-012	Machine Bolt 1/4" X 1/2"	100/1,000/2,000
MBT-014-034	Machine Bolt 1/4" x 3/4"	100/1,000/2,000
MBT-014-100	Machine Bolt 1/4" x 1"	100/1,000/2,000
MBT-014-114	Machine Bolt 1/4" x 1-1/4"	100/1,000/2,000
MBT-014-112	Machine Bolt 1/4" x 1-1/2"	100/1,000/2,000
MBT-014-200	Machine Bolt 1/4" x 2"	100/1,000/2,000
MBT-038-012	Machine Bolt 3/8" x 1/2"	100/1,000/2,000
MBT-038-034	Machine Bolt 3/8" x 3/4"	100/1,000/2,000
MBT-038-100	Machine Bolt 3/8" x 1"	100/1,000/2,000
MBT-038-114	Machine Bolt 3/8" x 1-1/4"	100/1,000/2,000
MBT-038-112	Machine Bolt 3/8" x 1- 1/2"	100/1,000/2,000
MBT-038-200	Machine Bolt 3/8" x 2"	100/1,000/2,000
MBT-038-212	Machine Bolt 3/8" x 2-1/2"	100/1,000/2,000
MBT-012-034	Machine Bolt 1/2" x 3/4"	100/1,000/2,000
MBT-012-100	Machine Bolt 1/2" x 1"	100/1,000/2,000
MBT-012-114	Machine Bolt 1/2" x 1-1/4"	100/1,000/2,000
MBT-012-112	Machine Bolt 1/2" x 1-1/2"	100/1,000/2,000
MBT-012-200	Machine Bolt 1/2" x 2"	100/1,000/2,000
MBT-058-100	Machine Bolt 5/8" x 1"	100/1,000/2,000
MBT-058-114	Machine Bolt 5/8" x 1-1/4"	100/1,000/2,000
MBT-058-112	Machine Bolt 5/8" x 1-1/2"	100/1,000/2,000
MBT-058-200	Machine Bolt 5/8" x 2"	100/1,000/2,000
MBT-058-212	Machine Bolt 5/8" x 2-1/2"	100/1,000/2,000
MBT-058-300	Machine Bolt 5/8" x 3"	100/1,000/2,000

Other Sizes Available



Channel & All Thread

Strut Fittings & Nuts

Clamps, Straps & Others

Clevis & Band Hangers

Roof Supports, Duct Clamps, & Misc.

Screws, Bolts & Anchors



Screws, Bolts, & Anchors

Nuts / Washers

Part Number	Description	Pkg Qty
HEX-012	Hex Nut 1/2"	100/1,000/2,000
HEX-014	Flat Washer 1/4"	100/1,000/2,000
HEX-034	Hex Nut 3/4"	100/1,000/2,000
HEX-038	Hex Nut 3/8"	100/1,000/2,000
HEX-058	Hex Nut 5/8"	100/1,000/2,000
LCK-012	Lock Washer 1/2"	100/1,000/2,000
LCK-014	Lock Washer 1/4"	100/1,000/2,000
LCK-034	Lock Washer 3/4"	100/1,000/2,000
LCK-038	Lock Washer 3/8"	100/1,000/2,000
LCK-058	Lock Washer 5/8"	100/1,000/2,000
WFD-014-100	Fender Washer 1/4" x 1"	100/1,000/2,000
WFD-014-114	Fender Washer 1/4" 1-1/4"	100/1,000/2,000
WFD-038-112	Fender Washer 3/8" 1-1/2"	100/1,000/2,000
WFD-038-114	Fender Washer 3/8" x 1-1/4"	100/1,000/2,000
WFT-012	Flat Washer 1/2"	100/1,000/2,000
WFT-014	Flat Washer 1/4"	100/1,000/2,000
WFT-034	Flat Washer 3/4"	100/1,000/2,000
WFT-038	Flat Washer 3/8"	100/1,000/2,000
WFT-058	Flat Washer 5/8"	100/1,000/2,000

Other Sizes Available



LCK-###



HEX-###



WFT-###



WFD-###-###

Channel & All Thread

Strut Fittings & Nuts

Clamps, Straps & Others

Clevis & Band Hangers

Roof Supports, Duct Clamps, & Misc.

Screws, Bolts & Anchors



Product Weights

CS INDUSTRIAL

Part Number	Weight	Part Number	Weight
AGA-002	.33 lbs	BKL-003	.52 lbs
AGA-003	.54 lbs	BKR-003	.52 lbs
AGB-002	.31 lbs	BKS-003	.94 lbs
AGC-245	1.53 lbs	BKT-004	.68 lbs
AGC-445	.7 lbs	BKU-003	.94 lbs
AGK-038	0.14 lbs	BKU-004	.66 lbs
AGL-002	.33 lbs	BKU-005	.75 lbs
AGL-003	.54 lbs	BMS-038	.07 lbs
AGL-004	.7 lbs	BVB-034	.57 lbs
AGL-038	.33 lbs	CFH-038	.12 lbs
AGO-245	0.53 lbs	CFL-038	.14 lbs
AGO-445	.7 lbs	CHP-034	.2 lbs
AGS-002	.33 lbs	CHP-100	.33 lbs
AGX-006	.41 lbs	CHP-112	.26 lbs
ATR-012	5.4 lbs	CHP-200	.47 lbs
ATR-014	1.3 lbs	CHP-212	.7 lbs
ATR-034	12 lbs	CHP-300	.92 lbs
ATR-038	2.9 lbs	CHP-400	1.22 lbs
ATR-058	8.1 lbs	CHP-500	1.72 lbs
AXP-006	.41 lbs	CHP-600	2.92 lbs
BHS-012	.08 lbs	CLL-014	.12 lbs
BHS-034	.08 lbs	CLL-038	.29 lbs
BHS-100	.09 lbs	CLM-012	.33 lbs
BHS-112	.11 lbs	CLM-038	.31 lbs
BHS-114	.11 lbs	CLP-012	.31 lbs
BHS-200	.14 lbs	CLP-038	.31 lbs
BHS-212	.23 lbs	CLU-338	.76 lbs
BHS-300	.28 lbs	CLU-500	.84 lbs
BHS-312	.27 lbs	CLW-038	.4 lbs
BHS-400	.32 lbs	CRS-004	.73 lbs
BHS-600	.74 lbs	CRS-005	.68 lbs
BHS-800	1.06 lbs	CSH-012	.13 lbs



Product Weights

CS INDUSTRIAL

Part Number	Weight	Part Number	Weight
CSH-014	.11 lbs	ODC-058	.09 lbs
CSH-034	.15 lbs	ODC-078	.11 lbs
CSH-038	.13 lbs	ODC-118	.14 lbs
CSH-058	.13 lbs	ODC-138	.17 lbs
CSH-078	.15 lbs	ODC-158	.24 lbs
CSH-118	.17 lbs	ODC-218	.24 lbs
CSH-138	.25 lbs	ODC-258	.35 lbs
CSH-158	.29 lbs	ODC-318	.39 lbs
CSH-218	.45 lbs	ODC-418	.52 lbs
CSH-258	.51 lbs	OSP-012	.02 lbs
CSH-318	.6 lbs	OSP-034	.03 lbs
CSH-418	.93 lbs	OSP-038	.01 lbs
DAC-012	.12 lbs	OSP-100	.05 lbs
DAC-038	.06 lbs	OSP-112	.07 lbs
DAE-038	.06 lbs	OSP-114	.07 lbs
DAT-012	.12 lbs	OSP-200	.17 lbs
DCC-006	2.9 lbs	OSR-012	.03 lbs
DCC-008	1.47 lbs	OSR-034	.05 lbs
DFL-038	.46 lbs	OSR-100	.07 lbs
DFV-038	.25 lbs	OSR-112	.15 lbs
DFZ-038	.52 lbs	OSR-114	.11 lbs
DWC-008	1.5 lbs	OSR-200	.25 lbs
DWC-010	1.91 lbs	OSR-212	.29 lbs
ECD-001	.02 lbs	OSR-300	.37 lbs
ECS-001	.01 lbs	OSR-312	.43 lbs
EMT-012	.09 lbs	OSR-400	.46 lbs
EMT-034	.01 lbs	PBF-002	2.7 lbs
EMT-100	.14 lbs	PBS-002	2.7 lbs
EMT-112	.24 lbs	PBS-004	3.48 lbs
EMT-114	.17 lbs	PBW-004	3.63 lbs
EMT-200	.28 lbs	RDC-012	.12 lbs
EYS-038	.09 lbs	RDC-014	.06 lbs



Product Weights

CS INDUSTRIAL

Part Number	Weight	Part Number	Weight
RDC-034	.29 lbs	SDC-004	.46 lbs
RDC-058	.18 lbs	SDC-005	.62 lbs
RDC-118	.04 lbs	SDC-006	.62 lbs
RDC-134	.09 lbs	SDC-007	.7 lbs
RES-010	.2 lbs	SDC-008	.66 lbs
RES-014	.27 lbs	SDC-009	1.1 lbs
RIG-012	.09 lbs	SDC-010	1.3 lbs
RIG-034	.01 lbs	SDC-012	1.54 lbs
RIG-100	.14 lbs	SDC-014	1.8 lbs
RIG-112	.25 lbs	SDC-016	2.48 lbs
RIG-114	.17 lbs	SDC-018	2.76 lbs
RIG-200	.29 lbs	SDC-020	3 lbs
RIG-212	.32 lbs	SDC-022	3.22 lbs
RIG-300	.42 lbs	SDC-024	3.48 lbs
RIG-312	.44 lbs	SLA-003	.51 lbs
RIG-400	.63 lbs	SLA-004	.7 lbs
RIG-600	.83 lbs	SLP-002	.31 lbs
RIS-012	.55 lbs	SLP-003	.51 lbs
RIS-034	.69 lbs	SLP-004	.71 lbs
RIS-100	.7 lbs	SLP-005	.71 lbs
RIS-112	1.17 lbs	SLU-004	2.39 lbs
RIS-114	1.08 lbs	SMS-038	.07 lbs
RIS-200	1.25 lbs	SPC-012	.08 lbs
RIS-212	1.51 lbs	SPC-014	.06 lbs
RIS-300	1.59 lbs	SPC-038	.08 lbs
RIS-400	1.77 lbs	SPR-012	.08 lbs
RIS-600	3.8 lbs	SPR-014	.07 lbs
RRC-012	.12 lbs	SPR-038	.07 lbs
RSC-010	4 lbs	SPR-058	.15 lbs
RSD-010	5.72 lbs	SPS-012	.01 lbs
RST-038	.18 lbs	SPS-014	.07 lbs
SBC-038	.13 lbs	SPS-038	.07 lbs



CS INDUSTRIAL

Product Weights

Part Number	Weight
SPX-012	.11 lbs
STN-012	.07 lbs
STN-014	.06 lbs
STN-038	.08 lbs
STN-058	.14 lbs
STQ-012	.08 lbs
STQ-014	.06 lbs
STQ-038	.08 lbs
STX-012	.08 lbs
TSP-012	.02 lbs
TSP-034	.03 lbs
TSP-038	.02 lbs
TSP-100	.04 lbs
TSP-112	.07 lbs
TSP-114	.05 lbs
TSP-200	.13 lbs
TSR-012	.02 lbs
TSR-034	.03 lbs
TSR-100	.04 lbs
TSR-112	.01 lbs
TSR-114	.07 lbs
TSR-200	.12 lbs
TSR-212	.21 lbs
TSR-300	.25 lbs
TSR-312	.27 lbs
TSR-400	.31 lbs
WHB-025	3.26 lbs
XSB-001	32.89 lbs
XSD-000	19 lbs
XSD-001	17 lbs
XSS-001	9.9 lbs