



CS INDUSTRIAL

Catalog

*4.17.2023 v4



CS INDUSTRIAL

Contact Details



Web: csindustrial.co

Email: info@csindustrial.net

Phone: 562.404.5900

16039 Valley View Ave
Santa Fe Springs, CA 90670



Table of Contents

CS INDUSTRIAL

Products -----	4
Strut -----	12
All Thread -----	14
Strut Fittings -----	15
90° Form Fittings -----	16
Spring / Strut Nuts -----	19
EMT Pipe Clamps -----	20
Rigid Pipe Clamps -----	20
O.D. Pipe Clamps -----	20
Cushion Clamps -----	21
Beam Clamps -----	22
Pipe Straps -----	23
Clevis Hangers -----	25
Band Hangers -----	27
Spiral Duct Clamps -----	29
Miscellaneous -----	29
Riser Clamps -----	30
Wall Hanger Brackets -----	31
Mount Screws/Anchors -----	32
Lag Bolts -----	32
Machine Bolts -----	33
Nuts & Washers -----	34



Products

CS INDUSTRIAL



All Threaded Rod



BMS-3/8 X 2



Clevis Hanger



Clevis Hanger, Felt



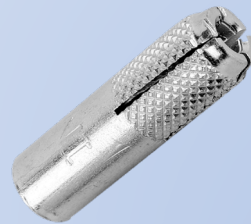
Clevis Hanger, Rubber



Clevis Hanger, Zinc



Cushion Clamps



DA-XX



DCC6H



Products

CS INDUSTRIAL



DCC8H



DWC8H



DWC10H



DFL-3/8



DFV-3/8



DFZ-3/8



D-10



EMT Pipe Clamp



EMT Pipe Clamp



EC-1



EC-2



FFW-X/X



Products

CS INDUSTRIAL



[FW-X/X](#)



[HN-X/X](#)



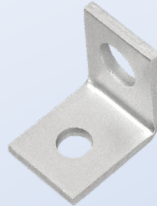
[Lag Bolts](#)



[L01T-x/x](#)



[L09](#)



[L09-3/8](#)



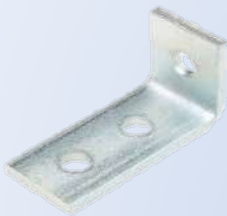
[L09-A](#)



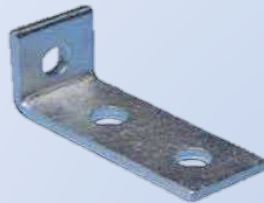
[L09-B](#)



[L09-C](#)



[L10](#)



[L10-A](#)



[L10-LH](#)



[L10-RH](#)



[L11](#)



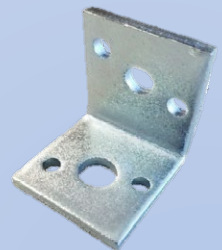
[L12-45](#)



[L12-C45](#)



[L13](#)



[L13Z](#)



Products

CS INDUSTRIAL



L14



L14S



L15



L21-L



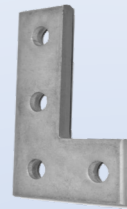
L22



L24



L25



L26



L27K-3/8



L28



L29



L34A L34B



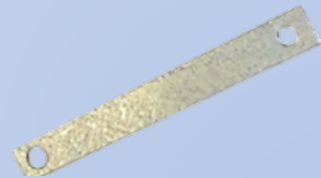
L34E



L34EZ L34EFZ



L34N L34B



L34RS-10 L34RS-14



Products

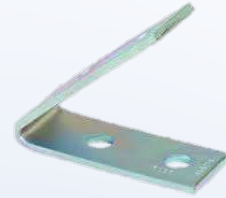
CS INDUSTRIAL



L34WZ



L124-45



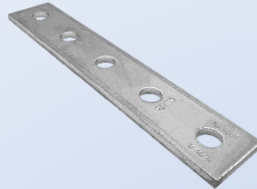
L124-C45



L242



L243



L245



LW-X/X



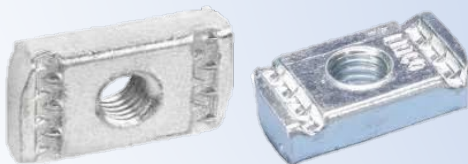
Machine Bolts



OSP-xxx



PL01-x/x



PL02-x/x



PL03-x/x



PL04-x/x

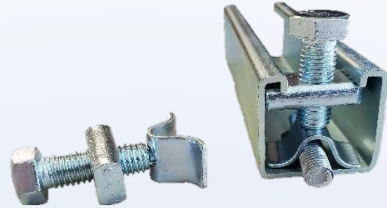


Products

CS INDUSTRIAL



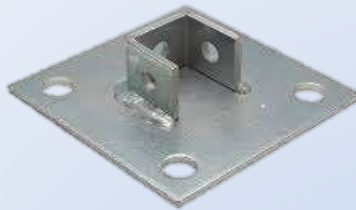
PL05-x/x



PL06



PBSQEG



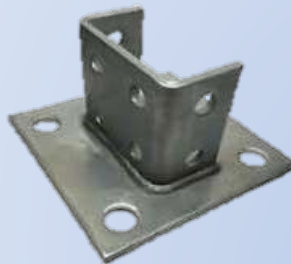
PBSQEG-1-5/8T



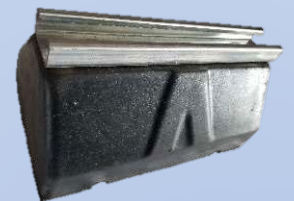
PBSQ2H



PBSQ2HF



PBSQ4HDW



RS-10



Products

CS INDUSTRIAL



Riser Clamps, Plain



Riser Clamps, Zinc



Spiral Duct Clamp



Swivel Band Hanger



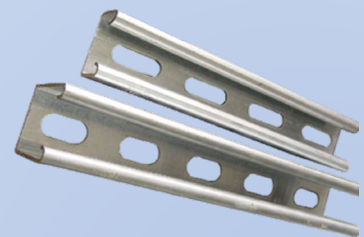
Swivel Band Hanger,
Felt Lined



Swivel Band Hanger,
Rubber Lined



Back-to-Back Strut



Deep and Shallow Strut



Products

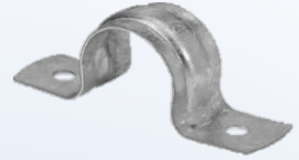
CS INDUSTRIAL



[SMS-3/8 X 2](#)



[SVM](#)



[TSP-xxx](#)



[Wall Hanger Bracket Kit](#)



[WH-25](#)



Channel & All Thread

Strut

Part Number	Length (ft)	Description	Gage	Pkg Qty (pcs)
P4121-TPG	10	Slotted Shallow Strut (1-3/16" x 1-5/8") Pre-galvanized	14	50
P4141-TPG	10	Slotted Deep Strut (1-5/8" x 1-5/8") Pre-galvanized	12	50
P4141-PG	10	Solid Deep Strut (1-5/8" x 1-5/8") Pre-galvanized	12	50
P4141-TBB PG	10	Back-to-Back Slotted Deep Strut Pre-galvanized	12	25

Strut Specifications

		Beam Loading Data													
Span (Inch)		24	36	35	60	70	82	94	106	118	142	166	190	214	
Max. Allowable Uniform Load ton force	P4121	0.27	0.18	0.13	0.11	0.09	0.08	0.07	0.06	0.05					
	P4141	0.76	0.50	0.38	0.30	0.25	0.21	0.19	0.17	0.15	0.12	0.11	0.09	0.08	
Deflection at Uniform Load inch	P4121	0.30	0.60	1.00	1.60	2.20	3.10	4.00	5.00	5.70					
	P4141	0.10	0.30	0.50	0.80	1.20	1.60	2.10	2.70	3.30	4.60	6.70	8.20	10.30	
Uniform Load at Span/200 Deflection ton-force	P4121	0.27	0.15	0.08	0.05	0.04	0.03	0.02	0.02	0.01					
	P4141	0.76	0.76	0.42	0.27	0.19	0.14	0.11	0.08	0.07	0.1	0.04	0.03	0.02	
		Column Loading Data													
Unbraced Height (Inch)		24	36	35	60	70	82	94	106	118	142	166	190	214	
Max. Allowable Lateral Load ton force	P4121	0.94	0.08	0.62	0.48	0.38									
	P4141	1.51	1.33	1.14	0.99	0.88	0.78	0.7	0.64	0.57					

CS Industrial pre-galvanized channels are cold roll formed to size from low-carbon strip steel. Our pre-galvanized steel is zinc coated through a hot dip process. Large coils of steel strip are fed through a continuous zinc coating machine which cleans, fluxes and coats the steel with molten zinc. The steel is cooled and recoiled then cold roll formed into our strut.

Our pre-galvanized zinc coating conforms to a G-90 thickness designation per ASTM A653.

CS Industrial standard length is 10 feet (3.05m)

Length Tolerances are +1/8" (3.2mm) to +1/2" (12.7mm) to allow for cutting.

Zinc Plating thickness is 0.75 MIL or 0.45 oz./sq. ft. of surface area.



Channel & All Thread

CS INDUSTRIAL

Channel & All Thread

Strut Fittings & Nuts

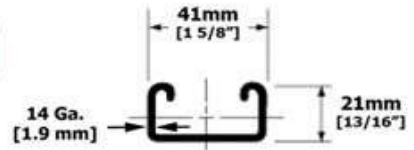
EMT & Rigid Clamps & Straps

Clevis & Band Hangers

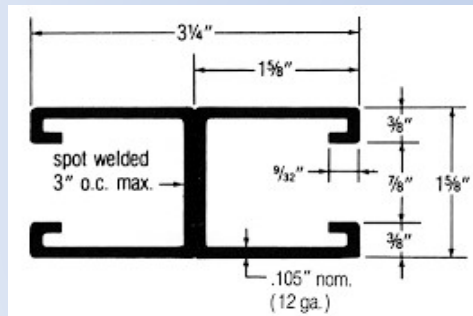
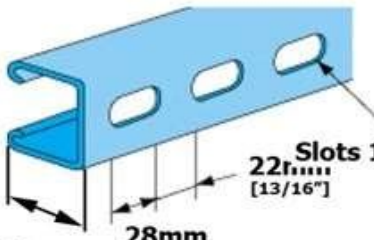
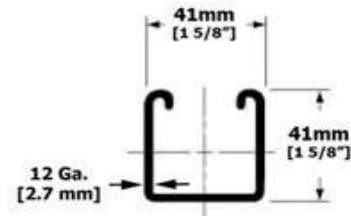
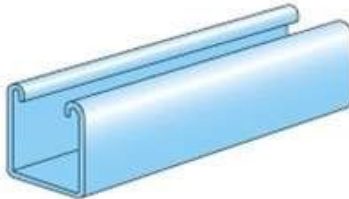
Roof Supports, Duct Clamps, & Misc.

Screws, Bolts, & Anchors

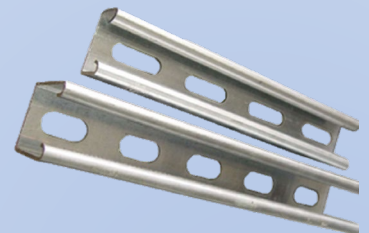
P4121



P4141



Back-to-Back Strut



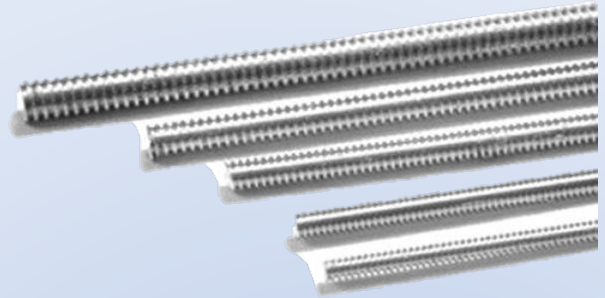
Deep and Shallow Strut



Channel & All Thread

All Thread Rod

Part Number	Thread Size	Description	Max Load (lbs)	Pkg Qty (pcs)
ATR 1/4	1/4" - 20	1/4" All Thread Rod EG - 10 ft	240	50
ATR 3/8	3/8" - 16	3/8" All Thread Rod EG - 10 ft	610	25
ATR 1/2	1/2" - 13	1/2" All Thread Rod EG - 10 ft	1,130	12
ATR 5/8	5/8" - 11	5/8" All Thread Rod EG - 10 ft	1,810	8
ATR 3/4	3/4" - 10	3/4" All Thread Rod EG - 10 ft	2,710	5



CS Industrial All Thread is cold thread rolled from low carbon steel, heat-treated and zinc plated into International Standard Class 4.8 threaded rod, with Unified Thread Standard (UTS) Class 1A threads.

CS Industrial standard lengths are 10 feet (3.05m).

Length Tolerances are +1/8" (3.2mm) to +1/2" (12.7mm) to allow for cutting.

Zinc Plating thickness is 0.75 MIL or 0.45 oz./sq. ft. of surface area.

Channel & All Thread

Strut Fittings & Nuts

EMT & Rigid Clamps & Straps

Clevis & Band Hangers

Roof Supports, Duct Clamps, & Misc.

Screws, Bolts, & Anchors



Strut Fittings & Nuts

CS INDUSTRIAL

Flat Fittings

Part Number	Bolt Size	Description	Pkg Qty
L01-1/4	1/4"	1/4" Square Channel Washer	100
L01-3/8	3/8"	3/8" Square Channel Washer	100
L01-1/2	1/2"	1/2" Square Channel Washer	100
L01-5/8	5/8"	5/8" Square Channel Washer	100
L01-3/4	3/4"	3/4" Square Channel Washer	100
L01T-3/8	3/8"	3/8" Square Channel Washer-No Twist	100
L01T-1/2	1/2"	1/2" Square Channel Washer-No Twist	100
L01T-5/8	5/8"	5/8" Square Channel Washer-No Twist	100
L21	1/2"	4 Hole T plate	50
L22	1/2"	5 Hole Flat Cross Plate	25
L242	1/2"	2 Hole Splice plate	50
L243	1/2"	3 Hole Splice plate	50
L24	1/2"	4 Hole Splice plate	50
L245	1/2"	5 Hole Splice plate	50
L25	1/2"	3 Hole Flat Angle plate	50
L26	1/2"	4 Hole Flat Angle plate	50
EC-1	N/A	End Cap Deep Strut - Black Plastic	100
EC-2	N/A	End Cap Shallow Strut - Black Plastic	100



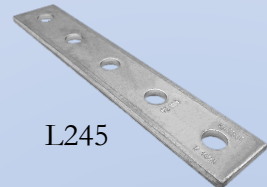
L242



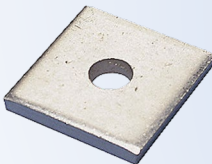
L243



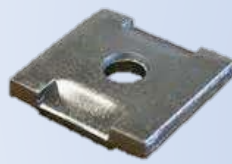
L24



L245



L01-X/X



L01T-X/X



L21



L22



L25



L26



EC-1



EC-2

Channel & All Thread

Strut Fittings & Nuts

EMT & Rigid Clamps & Straps

Clevis & Band Hangers

Roof Supports, Duct Clamps, & Misc.

Screws, Bolts, & Anchors



Strut Fittings & Nuts

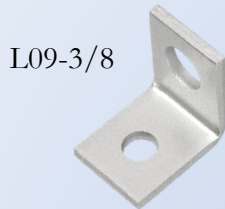
CS INDUSTRIAL

Formed Fittings 90 Degree

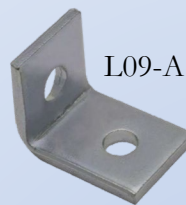
Part Number	Rod Size	Description	Pkg Qty
L09	1/2"	2 Hole 90 deg 1/2" 1-7/8 X 2-1/16	100
L09-3/8	3/8"	2 Hole 90 deg 3/8" 1-7/8 X 2-1/16	100
L09-A	1/2"	2 Hole 90 deg 1/2" 1-5/8 X 2-1/4	100
L09-B	1/2"	2 Hole 90 deg 1/2" 1-5/8 X 1-7/8-5/16 thread	100
L09-C	1/2"	1 Hole 1 Slot 90 deg 1/2" 1-5/8 X 2-5/8	50
L10	1/2"	3 Hole 90 deg 1/2" 1-7/8 X 3-7/8	50
L10-A	1/2"	3 Hole 90 deg 1/2" 1-5/8 X 4-1/8	50
L10-LH	1/2"	3 Hole 90 Offset Bent Left Hand 1/2"	50
L10-RH	1/2"	3 Hole 90 Offset Bent Right Hand 1/2"	50
L11	1/2"	4 Hole 90 deg 1/2" 3-1/2 X 4-1/8	50
L13	3/8" or 1/2"	3/8" or 1/2" 6 Hole Angle Bracket - Plain	50
L13Z	3/8" or 1/2"	3/8" or 1/2" 6 Hole Angle Bracket - EG	50



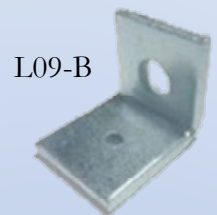
L09



L09-3/8



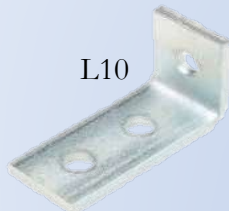
L09-A



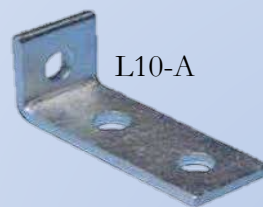
L09-B



L09-C



L10



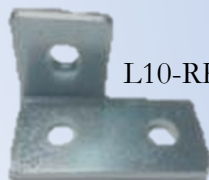
L10-A



L11



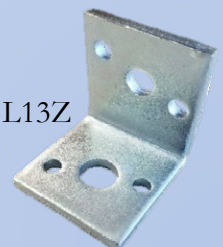
L10-LH



L10-RH



L13



L13Z

Channel & All Thread

Strut Fittings & Nuts

EMT & Rigid Clamps & Straps

Clevis & Band Hangers

Roof Supports, Duct Clamps, & Misc.

Screws, Bolts, & Anchors



Strut Fittings & Nuts

Formed Fittings

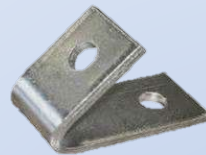
Part Number	Rod Size	Description	Pkg Qty
L12-45	1/2"	45 Deg Open 2 Hole 1/2" 2-5/16 X 3	50
L124-45	1/2"	45 Deg Open 4 Hole 1/2" 3-1/2 X 3-1/2	50
L12-C45	1/2"	45 Deg Close 2 Hole 1/2" 2-5/16 X 3	50
L124-C45	1/2"	45 Deg Close 4 Hole 1/2" 3-1/2 X 3-1/2	25
L14	1/2"	1/2" 5 hole "U" Bracket 1-5/8	50
L14-S	1/2"	1/2" 1 Hole 2 Slot "U" Bracket 1-5/8	50
L15	1/2"	4 Hole Cup Bracket 1/2"	50
L21-L	1/2"	4 Hole T Offset Bent 90 Deg	50
L27K-3/8	3/8Z'	Angle Bracket 3/8 Thread Knurled	50
L28	1/2"	4 Hole Clevis Splice Plate - 1-5/8"	10
L29	1/2"	Z Support Bracket 3 Hole Deep	50



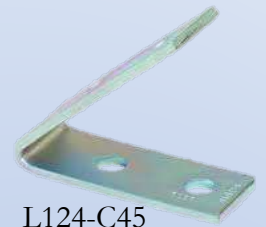
L12-45



L124-45



L12-C45



L124-C45



L14



L14-S



L15



L21-L



L27K-3/8



L28



L29

Channel & All Thread

Strut Fittings & Nuts

EMT & Rigid Clamps & Straps

Clevis & Band Hangers

Roof Supports, Duct Clamps, & Misc.

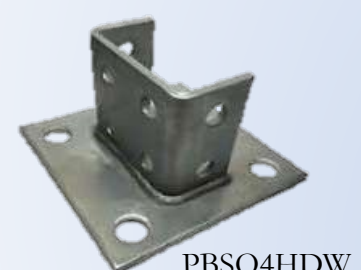
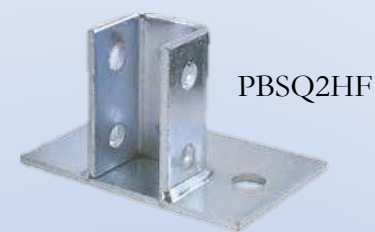
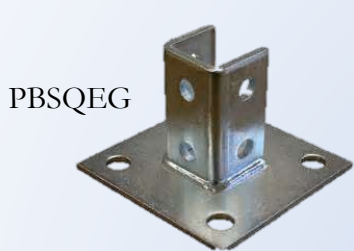
Screws, Bolts, & Anchors



Strut Fittings & Nuts

Strut Post Base - Support Brackets

Part Number	Rod Size	Description	Pkg Qty
PBSQEG	1/2"	Post Base Sq 4 Hole base	10
PBSQ2H	1/2"	Post Base Sq 2 Hole base	10
PBSQ2HF	1/2"	Post Base Sq 2 Hole Flush base	10
PBSQ4HDW	1/2"	Post Base Sq 4 Hole Base Double Wide	10
PBSQEG-1-5/8T	1/2"	Post Base Sq 4 Hole base 1-5/8" tall	10
DCC6H	1/2"	Double Corner Connector 6 Hole	20
DCC8H	1/2"	Double Corner Connector 8 Hole	20
DWC8H	1/2"	Double Wing Connector 8 Hole	20
DWC10H	1/2"	Double Wing Connector 10 Hole	20



Channel & All Thread

Strut Fittings & Nuts

EMT & Rigid Clamps & Straps

Clevis & Band Hangers

Roof Supports, Duct Clamps, & Misc.

Screws, Bolts, & Anchors



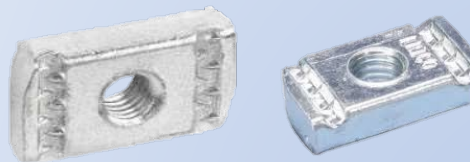
Strut Fittings & Nuts

Spring Nuts/Strut Nuts

Part Number	Thread Size	Description	Pkg Qty
PL01-1/4	1/4"	1/4" Deep Channel Spring Nut	100
PL01-3/8	3/8"	3/8" Deep Channel Spring Nut	100
PL01-1/2	1/2"	1/2" Deep Channel Spring Nut 3/8" thick	100
PL01-1/2X1/2	1/2"	1/2 " Deep Channel Spring Nut 1/2" thick	100
PL01-5/8	5/8"	5/8" Deep Channel Spring Nut	100
PL02-1/4	1/4"	1/4" Strut Nut No Spring	100
PL02-3/8	3/8"	3/8" Strut Nut No Spring	100
PL02-1/2	1/2"	1/2" Strut Nut No Spring 3/8" thick	100
PL02-5/8	5/8"	5/8" Strut Nut No Spring	100
PL03-1/4	1/4"	1/4" Shallow Channel Spring Nut	100
PL03-3/8	3/8"	3/8" Shallow Channel Spring Nut	100
PL03-1/2	1/2"	1/2" Shallow Channel Spring Nut	100
PL04-1/4	1/4"	1/4" Strut Nut w/ Twist Tab - Squeeze	100
PL04-3/8	3/8"	3/8" Strut Nut w/ Twist Tab - Squeeze	100
PL04-1/2	1/2"	1/2" Strut Nut w/ Twist Tab - Squeeze	100
PL05-1/4	1/4"	1/4" Cone Strut Nut	100
PL05-3/8	3/8"	3/8" Cone Strut Nut	100
PL05-1/2	1/2"	1/2" Cone Strut Nut	100
PL06	3/8" - 5/8"	Rod Stiffener	60



PL01-X/X



PL02-X/X



PL03-X/X



PL04-X/X



PL05-X/X



PL06

Channel & All Thread

Strut Fittings & Nuts

EMT & Rigid Clamps & Straps

Clevis & Band Hangers

Roof Supports, Duct Clamps, & Misc.

Screws, Bolts, & Anchors



CS INDUSTRIAL

EMT & Rigid Clamps & Straps

EMT Pipe Clamps

Part Number	Description	Load lbs	Pkg Qty
T41-015	EMT 1/2" Pipe Clamp	400	100
T41-020	EMT 3/4" Pipe Clamp	400	100
T41-025	EMT 1" Pipe Clamp	600	100
T41-032	EMT 1-1/4" Pipe Clamp	600	100
T41-040	EMT 1-1/2" Pipe Clamp	800	50
T41-050	EMT 2" Pipe Clamp	800	50



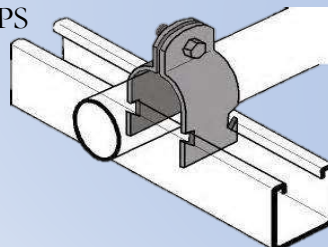
Rigid Pipe Clamps

Part Number	Description	Load lbs	Pkg Qty
R41-015	Rigid 1/2" Pipe Clamp	400	100
R41-020	Rigid 3/4" Pipe Clamp	600	100
R41-025	Rigid 1" Pipe Clamp	600	100
R41-032	Rigid 1-1/4" Pipe Clamp	600	100
R41-040	Rigid 1-1/2" Pipe Clamp	800	50
R41-050	Rigid 2" Pipe Clamp	800	50
R41-065	Rigid 2-1/2" Pipe Clamp	800	50
R41-075	Rigid 3" Pipe Clamp	800	50
R41-090	Rigid 3-1/2" Pipe Clamp	1,000	50
R41-100	Rigid 4" Pipe Clamp	1,000	50
R41-150	Rigid 6" Pipe Clamp	1,000	50



O.D. Pipe Clamps

Part Number	Description	Load lbs	Pkg Qty
D41-015	Pipe Clamp 5/8" OD 1/2" CPS	400	100
D41-020	Pipe Clamp 7/8" OD 3/4" CPS	400	100
D41-025	Pipe Clamp 1-1/8" OD 1" CPS	600	250
D41-032	Pipe Clamp 1-3/8" OD 1-1/4" CPS	600	200
D41-040	Pipe Clamp 1-5/8" OD 1-1/2" CPS	600	150
D41-050	Pipe Clamp 2-1/8" OD 2" CPS	800	150
D41-065	Pipe Clamp 2-5/8" OD 2-1/2" CPS	800	100
D41-075	Pipe Clamp 3-1/8" OD 3" CPS	800	50
D41-100	Pipe Clamp 4-1/8" OD 4" CPS	1,000	25



Channel & All Thread

Strut Fittings & Nuts

EMT & Rigid Clamps & Straps

Clevis & Band Hangers

Roof Supports, Duct Clamps, & Misc.

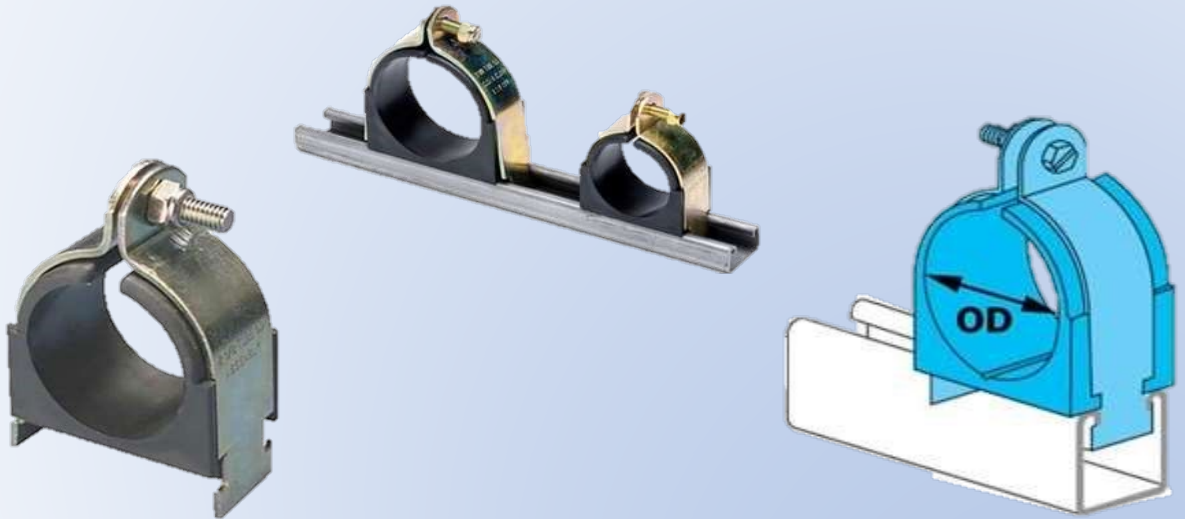
Screws, Bolts, & Anchors



EMT & Rigid Clamps & Straps

Cushion Clamps

Part Number	Description	Load lbs	Pkg Qty
C41-006	Cushion Clamp 1/4" OD	300	250
C41-010	Cushion Clamp 3/8" OD	400	100
C41-012	Cushion Clamp 1/2" OD	400	100
C41-016	Cushion Clamp 5/8" OD	400	125
C41-019	Cushion Clamp 3/4" OD	400	125
C41-022	Cushion Clamp 7/8" OD	400	125
C41-028	Cushion Clamp 1-1/8" OD	600	125
C41-035	Cushion Clamp 1-3/8" OD	600	125
C41-041	Cushion Clamp 1-5/8" OD	600	40
C41-054	Cushion Clamp 2-1/8" OD	700	70
C41-067	Cushion Clamp 2-5/8" OD	700	30
C41-079	Cushion Clamp 3-1/8" OD	700	40
C41-105	Cushion Clamp 4-1/8" OD	900	25



CS Industrial cushion clamps are made by stamping low-carbon strip steel. The steel is zinc plated with a yellow di-chromate anti-corrosion treatment. Our zinc plating conforms to a G-90 thickness designation per ASTM A653. These clamps are well suited for absorbing shock, reducing vibration, eliminating unwanted noise and preventing galvanic corrosion between various pipe materials and the steel clamps. Specially designed protrusions lock the cushion into the strut to ensure vibrations do not move the clamp.

Channel & All Thread

Strut Fittings & Nuts

EMT & Rigid Clamps & Straps

Clevis & Band Hangers

Roof Supports, Duct Clamps, & Misc.

Screws, Bolts, & Anchors



EMT & Rigid Clamps & Straps

Beam Clamps

Part Number	Description	Max Load (lbs)	Pkg Qty
L34E	3/8" Malleable Beam Clamp Plain	400	100
L34F	1/2" Malleable Beam Clamp Plain	500	100
L34EZ	3/8" Malleable Beam Clamp-Zinc Plated	400	100
L34FZ	1/2" Malleable Beam Clamp-Zinc Plated	500	100
L34WZ	3/8" Malleable Wide Mouth Beam Clamp Zinc	400	100
L34N	1/4" Light Duty Beam Clamp	75	100
L34P	3/8" Light Duty Beam Clamp	300	100
L34A	U-Bolt Beam Clamp 3-3/8"	1,000	50
L34B	U-Bolt Beam Clamp 5"	1,000	50
L34RS-10	3/8" or 1/2" Retaining Strap 10"	N/A	100
L34RS-14	3/8" or 1/2" Retaining Strap 14"	N/A	100



L34E



L34EZ L34FZ



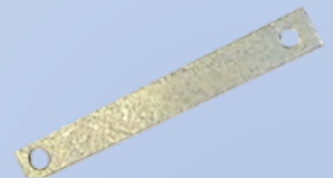
L34WZ



L34N L34B



L34A L34B



L34RS-10 L34RS-14

Channel & All Thread

Strut Fittings & Nuts

EMT & Rigid Clamps & Straps

Clevis & Band Hangers

Roof Supports, Duct Clamps, & Misc.

Screws, Bolts, & Anchors



EMT & Rigid Clamps & Straps

Pipe Straps - EMT / Rigid

Part Number	Description	Finish	Pkg Qty
OSP-050	EMT One Hole Strap 1/2"	EG	200
OSP-075	EMT One Hole Strap 3/4"	EG	150
OSP-100	EMT One Hole Strap 1"	EG	100
OSP-125	EMT One Hole Strap 1-1/4"	EG	50
OSP-150	EMT One Hole Strap 1-1/2"	EG	50
OSP-200	EMT One Hole Strap 2"	EG	25
TSP-037	EMT Two Hole Strap 3/8"	EG	100
TSP-050	EMT Two Hole Strap 1/2"	EG	100
TSP-075	EMT Two Hole Strap 3/4"	EG	100
TSP-100	EMT Two Hole Strap 1"	EG	50
TSP-125	EMT Two Hole Strap 1-1/4"	EG	50
TSP-150	EMT Two Hole Strap 1-1/2"	EG	25
TSP-200	EMT Two Hole Strap 2"	EG	20



TSP



OSP

Channel & All Thread

Strut Fittings & Nuts

EMT & Rigid Clamps & Straps

Clevis & Band Hangers

Roof Supports, Duct Clamps, & Misc.

Screws, Bolts, & Anchors



EMT & Rigid Clamps & Straps

Pipe Straps - EMT / Rigid

Part Number	Description	Finish	Pkg Qty
OSP-050R	Rigid One Hole Strap 1/2"	EG	100
OSP-075R	Rigid One Hole Strap 3/4"	EG	100
OSP-100R	Rigid One Hole Strap 1"	EG	50
OSP-125R	Rigid One Hole Strap 1-1/4"	EG	50
OSP-150R	Rigid One Hole Strap 1-1/2"	EG	25
OSP-200R	Rigid One Hole Strap 2"	EG	20
OSP-250R	Rigid One Hole Strap 2-1/2"	EG	20
OSP-300R	Rigid One Hole Strap 3"	EG	10
OSP-350R	Rigid One Hole Strap 3-1/2"	EG	10
OSP-400R	Rigid One Hole Strap 4"	EG	10
TSP-050R	Rigid Two Hole Strap 1/2"	EG	100
TSP-075R	Rigid Two Hole Strap 3/4"	EG	100
TSP-100R	Rigid Two Hole Strap 1"	EG	50
TSP-125R	Rigid Two Hole Strap 1-1/4"	EG	25
TSP-150R	Rigid Two Hole Strap 1-1/2"	EG	20
TSP-200R	Rigid Two Hole Strap 2"	EG	10
TSP-250R	Rigid Two Hole Strap 2-1/2"	EG	10
TSP-300R	Rigid Two Hole Strap 3"	EG	10
TSP-350R	Rigid Two Hole Strap 3-1/2"	EG	10
TSP-400R	Rigid Two Hole Strap 4"	EG	10

Channel & All Thread

Strut Fittings & Nuts

EMT & Rigid Clamps & Straps

Clevis & Band Hangers

Roof Supports, Duct Clamps, & Misc.

Screws, Bolts, & Anchors



Clevis & Band Hangers

Clevis Hangers - Plain

Part Number	Rod Size	Description	Load (lbs)	Pkg Qty
CH-015	3/8"	Clevis Hanger 1/2" Plain	150	50
CH-020	3/8"	Clevis Hanger 3/4" Plain	150	50
CH-025	3/8"	Clevis Hanger 1" Plain	250	50
CH-032	3/8"	Clevis Hanger 1-1/4" Plain	250	50
CH-040	3/8"	Clevis Hanger 1-1/2" Plain	250	50
CH-050	3/8"	Clevis Hanger 2" Plain	250	50
CH-065	1/2"	Clevis Hanger 2-1/2" Plain	350	25
CH-075	1/2"	Clevis Hanger 3" Plain	350	25
CH-100	5/8"	Clevis Hanger 4" Plain	500	25
CH-125	5/8"	Clevis Hanger 5" Plain	600	25
CH-150	3/4"	Clevis Hanger 6" Plain	800	10



Clevis Hangers - Plated

Part Number	Rod Size	Description	Load (lbs)	Pkg Qty
CHZ-015	3/8"	Clevis Hanger 1/2" Zinc	150	50
CHZ-020	3/8"	Clevis Hanger 3/4" Zinc	150	50
CHZ-025	3/8"	Clevis Hanger 1" Zinc	250	50
CHZ-032	3/8"	Clevis Hanger 1-1/4" Zinc	250	50
CHZ-040	3/8"	Clevis Hanger 1-1/2" Zinc	250	50
CHZ-050	3/8"	Clevis Hanger 2" Zinc	250	50
CHZ-065	1/2"	Clevis Hanger 2-1/2" Zinc	350	25
CHZ-075	1/2"	Clevis Hanger 3" Zinc	350	25
CHZ-100	5/8"	Clevis Hanger 4" Zinc	500	250
CHZ-125	5/8"	Clevis Hanger 5" Zinc	600	25
CHZ-150	3/4"	Clevis Hanger 6" Zinc	800	10
CHZ-200	3/4"	Clevis Hanger 8" Zinc	1,200	10



Channel & All Thread

Strut Fittings & Nuts

EMT & Rigid Clamps & Straps

Clevis & Band Hangers

Roof Supports, Duct Clamps, & Misc.

Screws, Bolts, & Anchors



Clevis & Band Hangers

Plain Clevis Hangers - Felt Lined

Part Number	Rod Size	Description	Load (lbs)	Pkg Qty
CHF-015	3/8"	Clevis Hanger 1/2" Felt	150	50
CHF-020	3/8"	Clevis Hanger 3/4" Felt	150	50
CHF-025	3/8"	Clevis Hanger 1" Felt	250	50
CHF-032	3/8"	Clevis Hanger 1-1/4" Felt	250	50
CHF-040	3/8"	Clevis Hanger 1-1/2" Felt	250	50
CHF-050	3/8"	Clevis Hanger 2"	250	50
CHF-065	1/2"	Clevis Hanger 2-1/2" Felt	350	25
CHF-075	1/2"	Clevis Hanger 3" Felt	350	25
CHF-100	5/8"	Clevis Hanger 4" Felt	500	25
CHF-150	3/4"	Clevis Hanger 6" Felt	800	10



Clevis Hangers - Rubber Lined

Part Number	Rod Size	Description	Load (lbs)	Pkg Qty
CHZR-015	3/8"	Clevis Hanger 1/2" Rubber	150	50
CHZR-020	3/8"	Clevis Hanger 3/4" Rubber	150	50
CHZR-025	3/8"	Clevis Hanger 1" Rubber	250	50
CHZR-032	3/8"	Clevis Hanger 1-1/4" Rubber	250	50
CHZR-040	3/8"	Clevis Hanger 1-1/2" Rubber	250	50
CHZR-050	3/8"	Clevis Hanger 2" Rubber	250	50
CHZR-065	1/2"	Clevis Hanger 2-1/2" Rubber	350	25
CHZR-075	1/2"	Clevis Hanger 3" Rubber	350	25
CHZR-100	5/8"	Clevis Hanger 4" Rubber	500	25
CHZR-150	3/4"	Clevis Hanger 6" Rubber	800	10

Temperature Range -40 F to 220 F



Channel & All Thread

Strut Fittings & Nuts

EMT & Rigid Clamps & Straps

Clevis & Band Hangers

Roof Supports, Duct Clamps, & Misc.

Screws, Bolts, & Anchors



Clevis & Band Hangers

Swivel Band Hangers

Part Number	Rod Size	Description	Max Rec	Pkg Qty
BH-015	3/8" -16	Swivel Band Hanger 1/2"	400	100
BH-020	3/8" -16	Swivel Band Hanger 3/4"	400	100
BH-025	3/8" -16	Swivel Band Hanger 1"	400	100
BH-032	3/8" -16	Swivel Band Hanger 1-1/4"	400	100
BH-040	3/8" -16	Swivel Band Hanger 1-1/2"	400	100
BH-050	3/8" -16	Swivel Band Hanger 2"	400	100
BH-065	3/8" -16	Swivel Band Hanger 2-1/2"	600	60
BH-075	3/8" -16	Swivel Band Hanger 3"	600	40
BH-090	3/8" -16	Swivel Band Hanger 3-1/2"	600	30
BH-100	3/8" -16	Swivel Band Hanger 4"	1,000	20
BH-150	1/2" -13	Swivel Band Hanger 6"	1,250	20
BH-200	1/2" -13	Swivel Band Hanger 8"	1,250	20



Swivel Band Hangers - Felt Lined

Part Number	Rod Size	Description	Max Rec	Pkg Qty
BF-015	3/8" -16	Swivel Band Hanger 1/2"	400	100
BF-020	3/8" -16	Swivel Band Hanger 3/4"	400	100
BF-025	3/8" -16	Swivel Band Hanger 1"	400	100
BF-032	3/8" -16	Swivel Band Hanger 1-1/4"	400	100
BF-040	3/8" -16	Swivel Band Hanger 1-1/2"	400	50
BF-050	3/8" -16	Swivel Band Hanger 2"	400	50
BF-065	3/8" -16	Swivel Band Hanger 2-1/2"	600	20
BF-075	3/8" -16	Swivel Band Hanger 3"	600	20
BF-090	3/8" -16	Swivel Band Hanger 3-1/2"	600	20
BF-100	3/8" -16	Swivel Band Hanger 4"	1,000	20



Channel & All Thread

Strut Fittings & Nuts

EMT & Rigid Clamps & Straps

Clevis & Band Hangers

Roof Supports, Duct Clamps, & Misc.

Screws, Bolts, & Anchors



Clevis & Band Hangers

Swivel Band Hangers - Rubber Lined

Part Number	Rod Size	Description	Max Rec	Pkg Qty
BR-015	3/8" -16	Swivel Band Hanger- Rubber 1/2"	400	100
BR-020	3/8" -16	Swivel Band Hanger- Rubber 3/4"	400	100
BR-025	3/8" -16	Swivel Band Hanger- Rubber 1"	400	100
BR-032	3/8" -16	Swivel Band Hanger- Rubber 1- 1/4"	400	100
BR-040	3/8" -16	Swivel Band Hanger- Rubber 1-1/2"	400	50
BR-050	3/8" -16	Swivel Band Hanger- Rubber 2"	400	50
BR-065	3/8" -16	Swivel Band Hanger- Rubber 2-1/2"	600	20
BR-075	3/8" -16	Swivel Band Hanger- Rubber 3"	600	20
BR-090	3/8" -16	Swivel Band Hanger- Rubber 3-1/2"	600	20
BR-100	3/8" -16	Swivel Band Hanger- Rubber 4"	1,000	20

Temperature Range -40 F to 220 F



Channel & All Thread

Strut Fittings & Nuts

EMT & Rigid Clamps & Straps

Clevis & Band Hangers

Roof Supports, Duct Clamps, & Misc.

Screws, Bolts, & Anchors



CS INDUSTRIAL

CS Industrial Catalog

Roof Supports, Spiral Duct Clamps, & Misc.

Spiral Duct Clamp

Part Number	Alt No.	Description	Pkg Qty
SDC-4	2540154	4" Spiral Duct Cushion Clamps	50
SDC-5	2540155	5" Spiral Duct Cushion Clamps	50
SDC-6	2540156	6" Spiral Duct Cushion Clamps	50
SDC-7	2540157	7" Spiral Duct Cushion Clamps	50
SDC-8	2540158	8" Spiral Duct Cushion Clamps	30
SDC-9	2540159	9" Spiral Duct Cushion Clamps	25
SDC-10	2540160	10" Spiral Duct Cushion Clamps	25
SDC-12	2540161	12" Spiral Duct Cushion Clamps	20
SDC-14	2540162	14" Spiral Duct Cushion Clamps	20
SDC-16	2540163	16" Spiral Duct Cushion Clamps	20
SDC-18	2540164	18" Spiral Duct Cushion Clamps	20
SDC-20	2540165	20" Spiral Duct Cushion Clamps	16
SDC-22	2540166	22" Spiral Duct Cushion Clamps	20
SDC-24	2540167	24" Spiral Duct Cushion Clamps	20



Miscellaneous

Part Number	Alt No.	Description	Pkg Qty
DFZ-3/8	2540171	Duct Fixing Z-Bracket with pad 3/8"	100
DFL-3/8	2540170	Duct Fixing L-Bracket with pad 3/8"	100
DFV-3/8	2540172	Duct Fixing V-Bracket with pad 3/8"	100
SVM	2540581	Strut Vibration Dampening Mount	Per Request
D-10	RS-10	Roof Support	Each
RS-10	D-10	CSI 10" Roof Support	Each
WH-25	2540567	Wall Hanger Bracket -25"	Each



DFZ-3/8



DFL-3/8



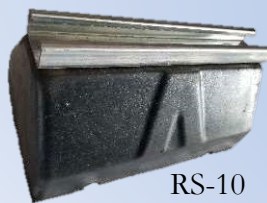
DFV-3/8



SVM



D-10



RS-10



WH-25

Channel & All Thread

Strut Fittings & Nuts

EMT & Rigid Clamps & Straps

Clevis & Band Hangers

Roof Supports, Duct Clamps, & Misc.

Screws, Bolts, & Anchors



CS INDUSTRIAL

Roof Supports, Spiral Duct Clamps, & Misc.

Riser Clamps - Plain

Part Number	Description	Pkg Qty
RC-0500	Riser Clamp 1/2" - Plain	Per Request
RC-0750	Riser Clamp 3/4" - Plain	Per Request
RC-1000	Riser Clamp 1" - Plain	Per Request
RC-1250	Riser Clamp 1-1/4" - Plain	Per Request
RC-1500	Riser Clamp 1-1/2" - Plain	Per Request
RC-2000	Riser Clamp 2" - Plain	Per Request
RC-2500	Riser Clamp 2-1/2" - Plain	Per Request
RC-3000	Riser Clamp 3" - Plain	Per Request
RC-4000	Riser Clamp 4" - Plain	Per Request
RC-6000	Riser Clamp 6" - Plain	Per Request



Riser Clamps - Zinc

Part Number	Description	Pkg Qty
RCZ-0500	Riser Clamp 1/2" - Zinc	Per Request
RCZ-0750	Riser Clamp 3/4" - Zinc	Per Request
RCZ-1000	Riser Clamp 1" - Zinc	Per Request
RCZ-1250	Riser Clamp 1-1/4" - Zinc	Per Request
RCZ-1500	Riser Clamp 1-1/2" - Zinc	Per Request
RCZ-2000	Riser Clamp 2" - Zinc	Per Request
RCZ-2500	Riser Clamp 2-1/2" - Zinc	Per Request
RCZ-3000	Riser Clamp 3" - Zinc	Per Request
RCZ-4000	Riser Clamp 4" - Zinc	Per Request
RCZ-6000	Riser Clamp 6" - Zinc	Per Request
RCZ-8000	Riser Clamp 8" - Zinc	Per Request



Channel & All Thread

Strut Fittings & Nuts

EMT & Rigid Clamps & Straps

Clevis & Band Hangers

Roof Supports, Duct Clamps, & Misc.

Screws, Bolts, & Anchors



CS INDUSTRIAL

Roof Supports, Spiral Duct Clamps, & Misc.

Wall Hanger Bracket Kit

Part Number	Alt No	Description	Pkg Qty	Max Rec
SWH-KIT	2540580	Mini Split Wall Bracket Assembly	Per Request	337 lbs



Channel &
All Thread

Strut Fittings
& Nuts

EMT & Rigid
Clamps & Straps

Clevis & Band
Hangers

Roof Supports, Duct
Clamps, & Misc.

Screws, Bolts,
& Anchors



Screws, Bolts, & Anchors

Mount Screws/Anchors

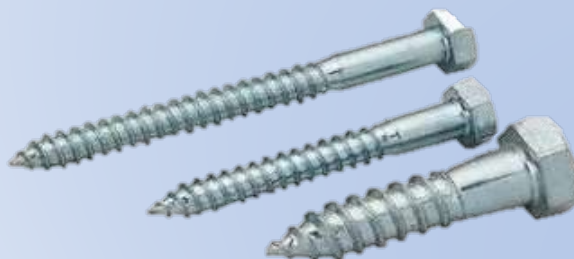
Part Number	Description	Pkg Qty
BMS-3/8 X 2	3/8" Wood Bottom Mount	700 or 100
SMS-3/8 X 2	3/8" Wood Side Mount	700 or 100
DA-38E	Drop Anchor 3/8" - 1/32" Diameter	50
DA-38	Drop Anchor 3/8" - 1/2" Diameter	50
DA-12	Drop Anchor 1/2"	50



Lag Bolts

Part Number	Description	Pkg Qty
LS-1/4 X 1-1/2	Lag Screw 1/4 X 1-1/2"	100/1,000/2,000
LS-1/4 X 2	Lag Screw 1/4 X 2"	100/1,000/2,000
LS-1/4 X 2-1/2	Lag Screw 1/4 X 2-1/2"	100/1,000/2,000
LS-1/4 X 3	Lag Screw 1/4 X 3"	100/1,000/2,000
LS-3/8 X 1-1/2	Lag Screw 3/8 X 1-1/2"	100/1,000/2,000
LS-3/8 X 2	Lag Screw 3/8 x 2"	100/1,000/2,000
LS-3/8 X 2-1/2	Lag Screw 3/8 X 2-1/2"	100/1,000/2,000
LS-3/8 X 3	Lag Screw 3/8 X 3"	100/1,000/2,000

Other Sizes Available



Channel & All Thread

Strut Fittings & Nuts

EMT & Rigid Clamps & Straps

Clevis & Band Hangers

Roof Supports, Duct Clamps, & Misc.

Screws, Bolts & Anchors



Screws, Bolts, & Anchors

Machine Bolts

Part Number	Description	Pkg Qty
MB-1/4 X 1/2	Machine Bolt 1/4" X 1/2"	100/1,000/2,000
MB-1/4 X 3/4	Machine Bolt 1/4" x 3/4"	100/1,000/2,000
MB-1/4 X 1	Machine Bolt 1/4" x 1"	100/1,000/2,000
MB-1/4 X 1-1/4	Machine Bolt 1/4" x 1-1/4"	100/1,000/2,000
MB-1/4 X 1-1/2	Machine Bolt 1/4" x 1-1/2"	100/1,000/2,000
MB-1/4 X 2	Machine Bolt 1/4" x 2"	100/1,000/2,000
MB-3/8 X 1/2	Machine Bolt 3/8" x 1/2"	100/1,000/2,000
MB-3/8 X 3/4	Machine Bolt 3/8" x 3/4"	100/1,000/2,000
MB-3/8 X 1	Machine Bolt 3/8" x 1"	100/1,000/2,000
MB-3/8 X 1-1/4	Machine Bolt 3/8" x 1-1/4"	100/1,000/2,000
MB-3/8 X 1-1/2	Machine Bolt 3/8" x 1- 1/2"	100/1,000/2,000
MB-3/8 X 2	Machine Bolt 3/8" x 2"	100/1,000/2,000
MB-3/8 X 2-1/2	Machine Bolt 3/8" x 2-1/2"	100/1,000/2,000
MB-1/2 X 3/4	Machine Bolt 1/2" x 3/4"	100/1,000/2,000
MB-1/2 X 1	Machine Bolt 1/2" x 1"	100/1,000/2,000
MB-1/2 X 1-1/4	Machine Bolt 1/2" x 1-1/4"	100/1,000/2,000
MB-1/2 X 1-1/2	Machine Bolt 1/2" x 1-1/2"	100/1,000/2,000
MB-1/2 X 2	Machine Bolt 1/2" x 2"	100/1,000/2,000
MB-5/8 X 1	Machine Bolt 5/8" x 1"	100/1,000/2,000
MB-5/8 X 1-1/4	Machine Bolt 5/8" x 1-1/4"	100/1,000/2,000
MB-5/8 X 1-1/2	Machine Bolt 5/8" x 1-1/2"	100/1,000/2,000
MB-5/8 X 2	Machine Bolt 5/8" x 2"	100/1,000/2,000
MB-5/8 X 2-1/2	Machine Bolt 5/8" x 2-1/2"	100/1,000/2,000
MB-5/8 X 3	Machine Bolt 5/8" x 3"	100/1,000/2,000

Other Sizes Available



Channel & All Thread

Strut Fittings & Nuts

EMT & Rigid Clamps & Straps

Clevis & Band Hangers

Roof Supports, Duct Clamps, & Misc.

Screws, Bolts & Anchors



CS INDUSTRIAL

Screws, Bolts, & Anchors

Nuts / Washers

Part Number	Description	Pkg Qty
HN-1/4	1/4" Hex Nut	100/1,000/2,000
FW-1/4	1/4" Flat Washer	100/1,000/2,000
LW-1/4	1/4" Lock Washer	100/1,000/2,000
FFW-1/4 X 1	1/4" x 1" Fender Washer	100/1,000/2,000
FFW-1/4 X 1-1/4	1/4" x 1-1/4" Fender Washer	100/1,000/2,000
HN-3/8	3/8" Hex Nut	100/1,000/2,000
FW-3/8	3/8" Flat Washer	100/1,000/2,000
LW-3/8	3/8" Lock Washer	100/1,000/2,000
FFW-3/8 X 1-1/4	3/8" x 1-1/4" Fender Washer	100/1,000/2,000
FFW-3/8 X 1-1/2	3/8" 1-1/2" Fender Washer	100/1,000/2,000
HN-1/2	1/2" Hex Nut	100/1,000/2,000
FW-1/2	1/2" Flat Washer	100/1,000/2,000
LW-1/2	1/2" Lock Washer	100/1,000/2,000
HN-5/8	5/8" Hex Nut	100/1,000/2,000
FW-5/8	5/8" Flat Washer	100/1,000/2,000
LW-5/8	5/8" Lock Washer	100/1,000/2,000
HN-3/4	3/4" Hex Nut	100/1,000/2,000
FW-3/4	3/4" Flat Washer	100/1,000/2,000
LW-3/4	3/4" Lock Washer	100/1,000/2,000

Other Sizes Available



HN-X/X



FW-X/X



LW-X/X



FFW-X/X

Channel & All Thread

Strut Fittings & Nuts

EMT & Rigid Clamps & Straps

Clevis & Band Hangers

Roof Supports, Duct Clamps, & Misc.

Screws, Bolts & Anchors