

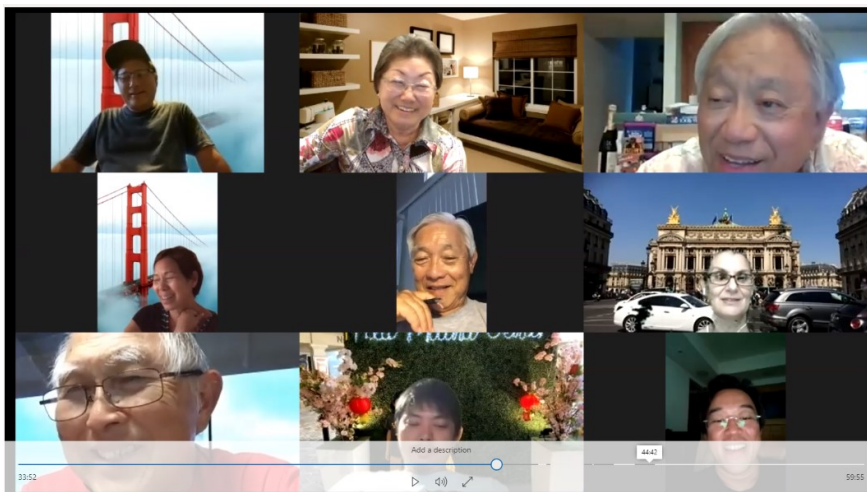
Bulletin Editor: Phyllis Sakane Popovich Email: popovichps@hotmail.com

VOLUME 48 JULY 2020 ISSUE 1

NUUANU Meetings via ZOOM

The Nuuanu Y Service Club met via ZOOM in June and July, and plans to continue to do so through the end of the year. The club had originally planned to meet at Catholic Charities, but due to Covid-19, the meeting rooms are closed to the public until further notice. The next club meeting will be on Monday, August 3rd, at 6:30 p.m. via zoom.

A snapshot of our first zoom meeting held in June is below.



Notes from recent meetings include the following:

- * The Nuuanu club was able to obtain and ship 160 face masks to our Brother Club, the Y's Men's Club of Osaka Centennial, who were most appreciative.
- * SHARON ISHIDA is our Hawaii Region Director for this new fiscal year.
- * We will be participating with FOODLAND'S GIVE ALOHA program. Our participation number is 77305. The program runs from September 1 to 30, 2020.
- * It doesn't look like the club will be having a chicken sale this year, but may be able to have our Punahou Carnival Fundraiser in February. We may also be able to have our annual Book Sale, depending on YMCA conditions.
- * It doesn't look like we can do the Thanksgiving Dinner this year. Members, please think about what we can do in its place, e.g., putting together care packages or gift bags.

NU'UANU Y'S MEN & WOMEN'S CLUB

OFFICERS

ISAAC SAKAMOTO President
 ALBERT LEE Vice President
 PHYLLIS POPOVICH Secretary
 STEPHEN WONG Treasurer

MEMBERS

KATHY AHLO
 NAOMI AIMOTO
 CELINE ALLOUCHERY
 JAMES CHONG
 CHERYL DACUS
 GARY HIGASHIONNA
 LARRY HIRANAKA
 ANALEE KINNEY
 GLENN MATSUKAWA
 WESLEY NAKAMURA
 JAMES OUCHI
 MAURICE SHIMONISHI
 ABI TAN

HONORARY MEMBERS

SUSAN KUWAHARA
 GEORGIA NIIMOTO

NU'UANU YMCA

1441 PALI HIGHWAY
 HONOLULU, HI 96813
 phone: 808-536-3556

RAY PURVIS Branch Executive
 DEBORAH THIERBACH Assoc Branch Exec
 KATHY AHLO Office Manager
 MOLLIE LIGHTHALL Sr Youth Pgm Dir
 SAMIR TEVES Membership Dir
 KATHERINE HALL Healthy Lifestyle Dir
 LINDSEY AMINA Assoc Group Ex Dir

Hawaiian Region . US Area
 Chartered May 29, 1964

Brother Clubs
 Y's Men's Club of Osaka Centennial
 Y's Men's Club of Bauhinia

HAWAII REGION EMPHASIS

July's Emphasis is Membership, Conservation and Extension, led by RSD Eddie Miwa (Kalihi)

August Emphasis is Community Service, led by RSD Rick Lau (Central). Initiative is the Camp Erdman project.

September Emphasis is Endowment Fund, led by RSD Linda Chung (West Oahu)

October Emphasis is Alexander Scholarship Fund/Brad Ishida Dollars for Scholars (ASF/BIDFS), led by RSD June Niimi (Hilo)

CHRISTIAN EMPHASIS

"God is our refuge and strength, an ever-present help in trouble."
(Psalm 46:1, NIV)

Don't be afraid, for I am with you.
Don't be discouraged,
for I am your God.
I will strengthen you and help you.
I will hold you up with my
victorious right hand.
(Isaiah 41:10, NLT)

A LITTLE HUMOR



This is called a "nothing" space.
Breathe in... breathe out...
Think about nothing.

-
-
-
-
-

You're welcome.

YMCA NEWS

Starting July 7th, a modified schedule of outdoor, indoor group, and in pool exercise classes with capacity limits (currently per State guidelines limited to 9 participants per class) with markers on the floor for participants will be offered via the YMCA's online advance reservation system MotionVibe at select Branch locations. Please visit <https://www.yimahonolulu.org/schedules> for more information.

METRO DISTRICT NEWS

CAMP ERDMAN PROJECT POSTPONED—Due to the rise in COVID-19 cases and CDC guidelines and restrictions, the work project scheduled for Camp Erdman on Saturday, August 15, from 8:00 a.m. to 11:30 a.m. has been postponed. The project would have included cleaning and painting of the dining hall and lanai area.

NEXT METRO DISTRICT MEETING—To be determined and via on-line.

HAWAII REGION NEWS

- Nuuanu's ISAAC SAKAMOTO is serving as RSD for Christian Emphasis for the Hawaii Region. Isaac is also serving as ASD for Endowment.
- Nuuanu's CELINE ALLOUCHERY is serving as RSD for Brotherhood Fund.

US AREA NEWS

U.S. AREA Y'S MEN INTERNATIONAL AWARDS—CONGRATULATIONS to all recipients. US AREA honorees are below.

ELMER CROWE AWARD—HAWAII REGION, MELANIE KAAIHUE-YOSHIDA; SOUTH ATLANTIC REGION, DAVID ROBERTS AND RAY BAKER.

REGIONAL DIRECTOR PERFORMANCE—SILVER AWARD, HAWAII, PHIL SAMMER; BRONZE AWARD, MID-EAST, CHARLEY REDMOND; NORTH ATLANTIC, JOSEPH KANJMALA; and SOUTH ATLANTIC, TERRY BRADLEY.

CHALLENGE 22—MEMBERSHIP NEW CLUB—HAWAII, ATHERTON Y SERVICE CLUB

NEW COMMUNITY SERVICE AWARD—CERTIFICATES—NORTH ATLANTIC, NEW YORK WESTCHESTER; PACIFIC SOUTHWEST INGLEWOOD; and SOUTH ATLANTIC, GALAXY.

CONGRATULATIONS to all clubs and members around the world!

AREA MEMBERSHIP DUES will be reduced to \$1.00 per member from \$26.00 per member.

ALEXANDER SCHOLARSHIP FUND/DOLLARS FOR SCHOLARS (ASF/DFS) will be suspending donations for the year. Members may make voluntary contributions to supplement the dues or to contribute to the fund.

INTERNATIONAL NEWS

The Y'S MEN INTERNATIONAL AWARDS were presented on YouTube by IPP, JENNIFER JONES. The video can be found at the following link: <https://youtu.be/WKYFTssAaD0>

Members of the Y's Men's Club of Osaka Centennial will be doing a test Zoom session with Nuuanu club members on Monday, August 3rd, after the club's 6:30 p.m. Zoom meeting. The test will be hosted by Osaka president, SHIGETAKA NAKAMURA, and KAN TANIKAWA.

The Hawaii Region will be hosting the YMI International Convention and Youth Convocation in Honolulu from August 11 to 14, 2022.

JAPAN WEST is having their Convention in Kyoto, June 3-5, 2021 at the Kyoto Westin Hotel.