

Model FCI03

The model FCI03 paddle flange chemical injection assembly is designed so that chemical can be continuously injected into the process with no interruptions.

This is a “sandwich” type design, with the FCI03 being mounted directly between the header connection on the pipe and either a valve or connecting flange. It is similar in design to the model FCI01 but without flange bolt holes with the flange sealing face area only.

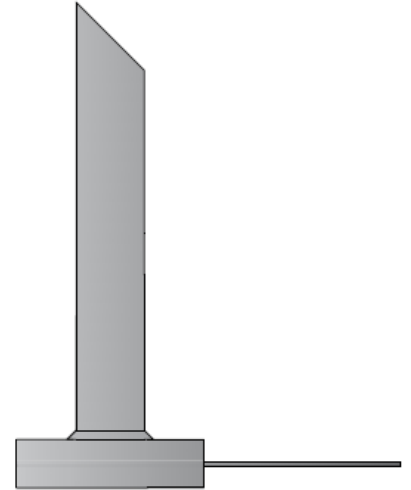
Fitting details

Mounting: 0.5” – 24” ASME (ANSI) B16.5 flange / B16.48 RJ / RF / FF

Standards: Conforms to NACE MR0175 & MR0103

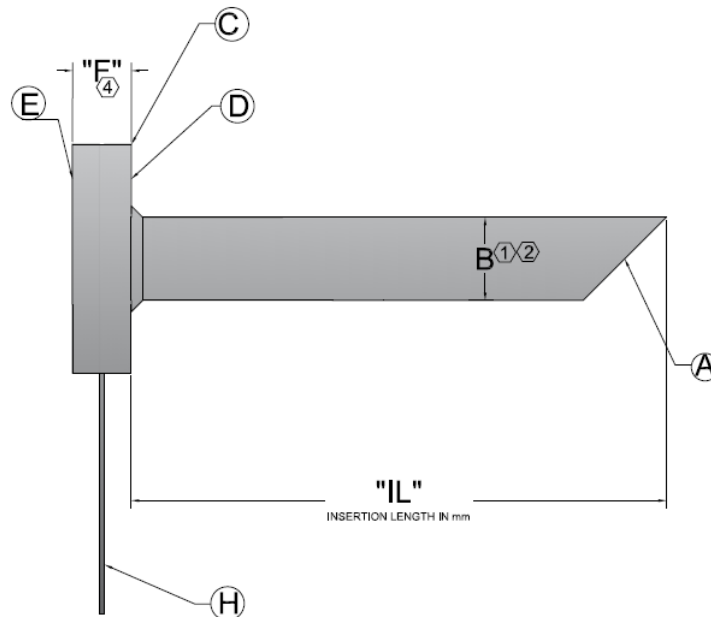
Temperature Range: As per flange / material ratings

Pressure Rating: As per selected flange rating

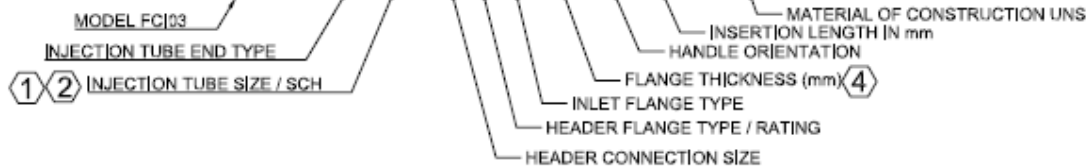


ASSEMBLY

The design has been methodically laid out, with the main characteristics of the assembly being as configurable as possible to allow even the most bespoke requirements being part of the “standard” design.

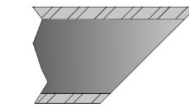


PART NUMBER: FCI03-A-B-CDE-F-H-IL-XXXXXX

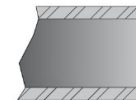


"A" TUBE END TYPES

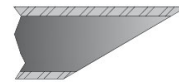
| QUILL TYPES "A" | | NOZZLE TYPES "A" | |
|-----------------|--------|------------------------|--------|
| 45° QUILL | A = Q1 | 90° NOZZLE 1/4" NPT | A = N1 |
| 60° QUILL | A = Q2 | 0° NOZZLE 1/4" NPT | A = N2 |
| 90° OPEN | A = Q3 | 90° NOZZLE 1/2" NPT | A = N3 |
| | | 0° NOZZLE 1/2" NPT | A = N4 |



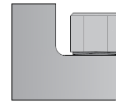
45° Quill end (Q1)



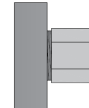
Open end (Q3)



60° Quill end (Q2)



90° Right angle nozzle (N1/N3)



Straight nozzle (N2/N4)

"B & C" SIZE CODES (NOMINAL SIZES)

| | | | |
|-----------|-----------|-----------|------------|
| 0,25" = A | 1,25" = E | 3,00" = I | 6,00" = M |
| 0,50" = B | 1,50" = F | 3,50" = J | 8,00" = N |
| 0,75" = C | 2,00" = G | 4,00" = K | 10,00" = O |
| 1,00" = D | 2,50" = H | 5,00" = L | 12,00" = P |

FLANGE RATING / TYPE "D & E"

| | | |
|--------------|--------------|--------------|
| 150#RF = 01 | 150#RJ = 06 | 150#FF = 11 |
| 300#RF = 02 | 300#RJ = 07 | 300#FF = 12 |
| 600#RF = 03 | 600#RJ = 08 | 600#FF = 13 |
| 1500#RF = 04 | 1500#RJ = 09 | 1500#FF = 14 |
| 2500#RF = 05 | 2500#RJ = 10 | 2500#FF = 15 |

- FOR TUBE SIZES NOT NOMINAL THESE CAN BE PUT AS "SIZE IN INCHES"IM
 FOLLOWED BY "PIPE WALL THICKNESS" IM ie FOR 1.00" OD PIPE WITH 1/4" PIPE
 WALL IS "1.00IM0.25IM". FOR METRIC SIZES FOLLOW THE SIZES WITH MM, ie
 8mm PIPE OD WITH 1.5mm PIPE WALL IS "8MM1.5MM"
- B CODE IS FOLLOWED BY SCH WITH 'S' THEN SCH NUMBER. IE 1" SCH 40 =
 DS40