

## Model FCI07

The model FCI07 flange by weldneck flange chemical injection assembly is designed so that chemical can be continuously injected into the process with no interruptions. The design facilitates going from larger flanges on the header pipe to smaller flange mountings on the inlet side.

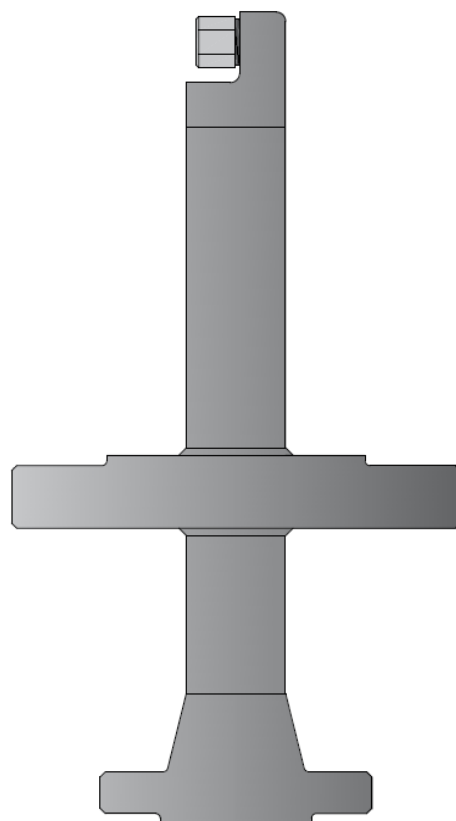
### Fitting details

**Mounting:** 0.5" – 24" ASME (ANSI) B16.5 flange RJ / RF / FF

**Standards:** Conforms to NACE MR0175 & MR0103

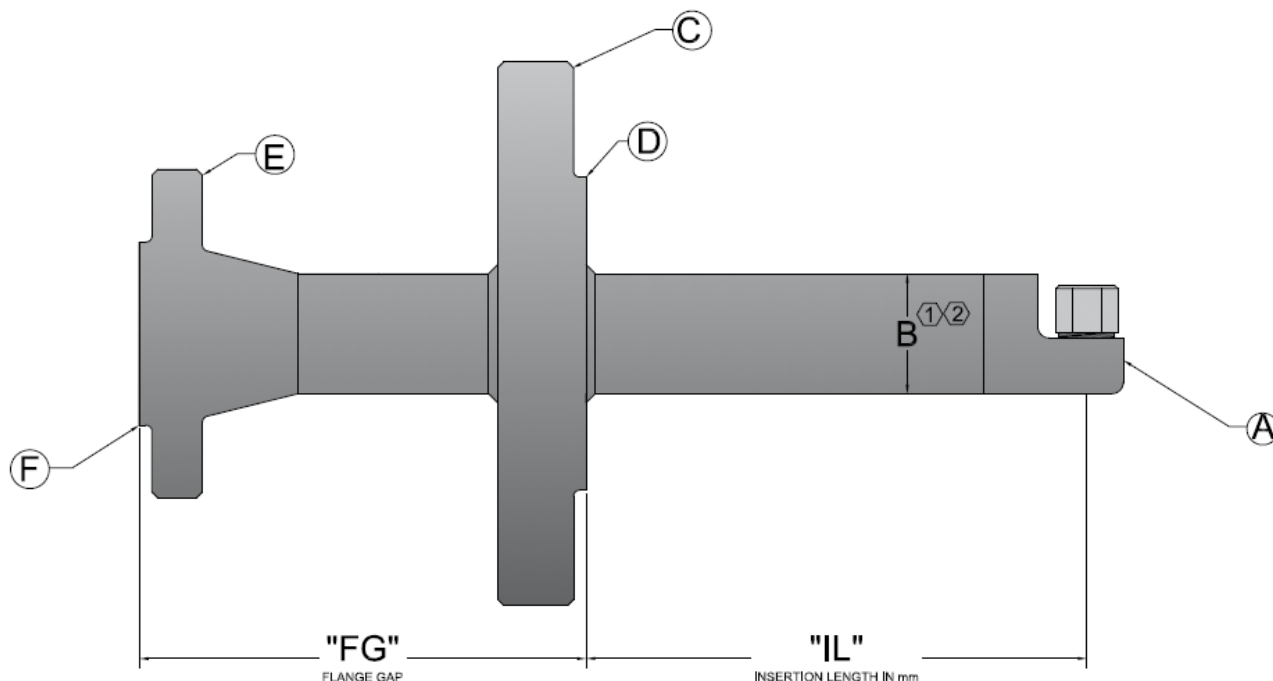
**Temperature Range:** As per flange / material ratings

**Pressure Rating:** As per selected flange rating



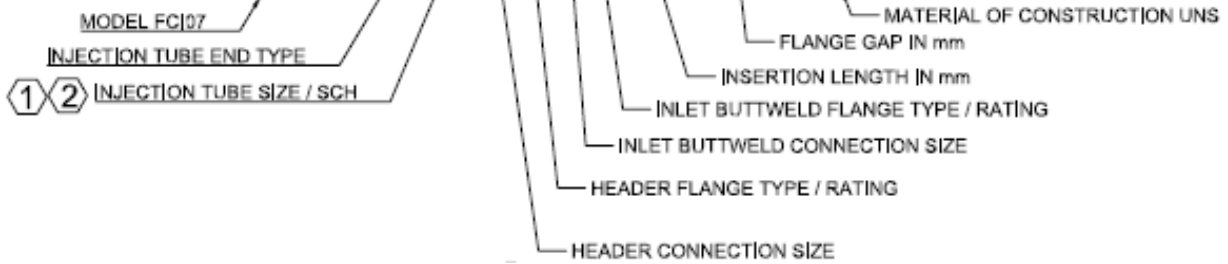
## ASSEMBLY

The design has been methodically laid out, with the main characteristics of the assembly being as configurable as possible to allow even the most bespoke requirements being part of the "standard" design.



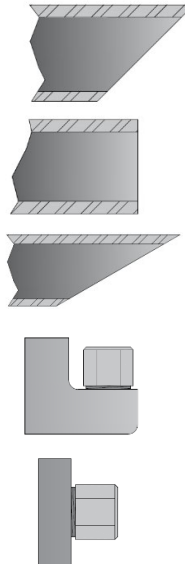
## PART NUMBER:

**FCI07-A-B-CDEF-IL-FG-XXXXXX**



### "A" TUBE END TYPES

QUILL TYPES "A"		NOZZLE TYPES "A"	
45° QUILL	A = Q1	90° NOZZLE 1/4" NPT	A = N1
60° QUILL	A = Q2	0° NOZZLE 1/4" NPT	A = N2
90° OPEN	A = Q3	90° NOZZLE 1/2" NPT	A = N3
		0° NOZZLE 1/2" NPT	A = N4



45° Quill end (Q1)

Open end (Q3)

60° Quill end (Q2)

90° Right angle nozzle (N1/N3)

Straight nozzle (N2/N4)

### "B, C & E" SIZE CODES (NOMINAL SIZES)

0.25" = A	1.25" = E	3.00" = I	6.00" = M
0.50" = B	1.50" = F	3.50" = J	8.00" = N
0.75" = C	2.00" = G	4.00" = K	10.00" = O
1.00" = D	2.50" = H	5.00" = L	12.00" = P

### FLANGE RATING / TYPE "D & F"

150#RF = 01	150#RJ = 06	150#FF = 11
300#RF = 02	300#RJ = 07	300#FF = 12
600#RF = 03	600#RJ = 08	600#FF = 13
1500#RF = 04	1500#RJ = 09	1500#FF = 14
2500#RF = 05	2500#RJ = 10	2500#FF = 15

- FOR TUBE SIZES NOT NOMINAL THESE CAN BE PUT AS "SIZE IN INCHES"IM  
 FOLLOWED BY "PIPE WALL THICKNESS" IM ie FOR 1.00" OD PIPE WITH 1/4" PIPE  
 WALL IS "1.00IM0.25IM". FOR METRIC SIZES FOLLOW THE SIZES WITH MM, ie  
 8mm PIPE OD WITH 1.5mm PIPE WALL IS "8MM1.5MM"
- B CODE IS FOLLOWED BY SCH WITH 'S' THEN SCH NUMBER. IE 1" SCH 40 =  
 DS40