

Andy Warhol:
Prints from the Collections of Jordan D. Schnitzer and His Family Foundation



After Andy Warhol
A Collection of Record Covers with Cover Art by Andy Warhol, 1949–87
vinyl records and cardboard covers
various sizes: smallest 7 x 7 in. (17.8 x 17.8 cm); largest 12 3/8 x 12 3/8 in. (31.4 x 31.4 cm)
2016.125a-nnn



Andy Warhol (American (1928–1987))
Love is a Pink Cake (IV.27–50), 1953
offset lithographs on loose blue bond paper
11 x 8 1/2 in.
2012.24a–y



Andy Warhol (American (1928–1987))
25 Cats Name(d) Sam and One Blue Pussy (IV.56), 1954
lithograph
8 5/8 x 5 7/8 in.
2015.230



Andy Warhol (American (1928–1987))
5 Young Boys (Loft Gallery announcement), 1954
offset lithograph on paper
22 1/8 x 29 1/8 in.
2012.29



Andy Warhol (American (1928–1987))
Happy Bug Day, 1954 circa
offset lithograph and watercolor on paper
14 x 9 3/8 in.
2012.26



Andy Warhol (American (1928–1987))
Happy Bug Day, edition of approximately 100, 1954 circa
lithograph
14 x 9 3/8 in.
2001.96



Andy Warhol (American (1928–1987))
Happy Butterfly Day, edition of approximately 100, 1955
lithograph
14 x 10 in.
2001.95



Andy Warhol (American (1928–1987))
In the Bottom of My Garden (IV.86A--105A), edition TP, 1955
offset lithograph on paper with hand coloring
8 3/4 x 11 1/4 x 1/4 in.
2012.31



Andy Warhol (American (1928–1987))
A la Recherche du Shoe Perdu (IV.69B), 1955
circa
offset lithograph and watercolor on paper
9 3/4 x 13 3/4 in.
2012.30a



Andy Warhol (American (1928–1987))
A la Recherche du Shoe Perdu (IV.69B),
1955 circa
offset lithograph with hand-coloring
9 11/16 x 13 11/16 in.
2004.271



Andy Warhol (American (1928–1987))
A la Recherche du Shoe Perdu (IV.70B), 1955
circa
offset lithograph and watercolor on paper
9 3/4 x 13 3/4 in.
2012.30b



Andy Warhol (American (1928–1987))
A la Recherche du Shoe Perdu (IV.71B), 1955
circa
offset lithograph and watercolor on paper
9 3/4 x 13 3/4 in.
2012.30c



Andy Warhol (American (1928–1987))
A la Recherche du Shoe Perdu (IV.72B),
1955 circa
offset lithograph and watercolor on paper
9 3/4 x 13 3/4 in.
2012.30d



Andy Warhol (American (1928–1987))
A la Recherche du Shoe Perdu (IV.73B), 1955
circa
offset lithograph and watercolor on paper
9 3/4 x 13 3/4 in.
2012.30e



Andy Warhol (American (1928–1987))
A la Recherche du Shoe Perdu (IV.74B), 1955
circa
offset lithograph and watercolor on paper
9 3/4 x 13 3/4 in.
2012.30f



Andy Warhol (American (1928–1987))
A la Recherche du Shoe Perdu (IV.75B),
1955 circa
offset lithograph and watercolor on paper
9 3/4 x 13 3/4 in.
2012.30g



Andy Warhol (American (1928–1987))
A la Recherche du Shoe Perdu (IV.76B), 1955
circa
offset lithograph and watercolor on paper
9 3/4 x 13 3/4 in.
2012.30h



Andy Warhol (American (1928–1987))
A la Recherche du Shoe Perdu (IV.77B), 1955
circa
offset lithograph and watercolor on paper
9 3/4 x 13 3/4 in.
2012.30i



Andy Warhol (American (1928–1987))
A la Recherche du Shoe Perdu (IV.78B),
 1955 circa
 offset lithograph and watercolor on paper
 9 3/4 x 13 3/4 in.
 2012.30j



Andy Warhol (American (1928–1987))
A la Recherche du Shoe Perdu (IV.79B), 1955
 circa
 offset lithograph and watercolor on paper
 9 3/4 x 13 3/4 in.
 2012.30k



Andy Warhol (American (1928–1987))
A la Recherche du Shoe Perdu (IV.80B), 1955
 circa
 offset lithograph and watercolor on paper
 9 3/4 x 13 3/4 in.
 2012.30l



Andy Warhol (American (1928–1987))
A la Recherche du Shoe Perdu (IV.81B),
 1955 circa
 offset lithograph and watercolor on paper
 9 3/4 x 13 3/4 in.
 2012.30m



Andy Warhol (American (1928–1987))
A la Recherche du Shoe Perdu (IV.82B), 1955
 circa
 offset lithograph and watercolor on paper
 9 3/4 x 13 3/4 in.
 2012.30n



Andy Warhol (American (1928–1987))
A la Recherche du Shoe Perdu (IV.83B), 1955
 circa
 offset lithograph and watercolor on paper
 9 3/4 x 13 3/4 in.
 2012.30o



Andy Warhol (American (1928–1987))
A la Recherche du Shoe Perdu (IV.84B),
 1955 circa
 offset lithograph and watercolor on paper
 9 3/4 x 13 3/4 in.
 2012.30p



Andy Warhol (American (1928–1987))
A la Recherche du Shoe Perdu, Cover (IV.69),
 1955 circa
 offset lithograph and watercolor on paper
 20 1/4 x 26 1/4 in.
 2012.30q



Andy Warhol (American (1928–1987))
Shoe and Leg (IV.85), 1955 circa
 offset lithograph and watercolor on paper
 26 1/8 x 20 in.
 2012.30r



Andy Warhol (American (1928–1987))
Tattooed Woman Holding a Rose, 1955
 circa
 lithograph
 29 7/8 x 11 3/8 in.
 2015.214



Andy Warhol (American (1928–1987))
25 Cats Name[d] Sam and One Blue Pussy (IV.52A–68A), edition 55/190, 1955 circa
 offset lithograph and watercolor
 9 1/4 x 6 1/8 x 1/2 in.
 2015.215



Andy Warhol (American (1928–1987))
In the Bottom of My Garden (IV.87A), 1956
 lithograph
 8 1/2 x 11 in.
 2015.231



Andy Warhol (American (1928–1987))
Kyoto, Japan, July 3, 1956, 1956
 offset lithograph and watercolor on paper
 17 3/8 x 14 3/8 in.
 2012.32



Andy Warhol (American (1928–1987))
A Gold Book, edition TP, 1957
 offset lithograph on gold paper
 each sheet folded: 14 1/2 x 11 1/4 inches;
 unfolded 14 1/2 x 18 1/2 to 22 1/2 inches
 2012.35a–f



Andy Warhol (American (1928–1987))
A Gold Book, edition TP, 1957
 offset lithograph on gold paper
 each sheet folded: 14 1/2 x 11 1/4 inches;
 unfolded 14 1/2 x 22 1/2 inches
 2012.36a–d



Andy Warhol (American (1928–1987))
Bodley Gallery Announcement, edition TP,
 1957 circa
 offset lithograph on paper
 12 7/8 x 19 1/2 in.
 2012.34a,b



Andy Warhol (American (1928–1987))
*Studies for a Boy Book (Bodley Gallery
 Announcement)*, 1957 circa
 offset lithograph on paper
 15 7/8 x 13 1/2 in.
 2012.33



**Andy, American (1928–1987) and Julia
 Warhola Warhol (Slovakian (1892–1972))**
Holy Cats by Andy Warhol's Mother, 1957
 circa
 offset lithograph on paper
 9 1/8 x 5 7/8 x 3/8 in.
 2012.37



Andy Warhol (American (1928–1987))
Wild Raspberries by Andy Warhol and Suzie Frankfurt: Piglet (IV.134A), 1959
 offset lithograph and watercolor on paper
 17 1/2 x 22 1/2 in.
 2012.41



Andy Warhol (American (1928–1987))
Launching at The Plaza with reply card, 1960
 circa
 offset lithograph
 8 1/2 x 11 in.
 2012.154a,b



Andy Warhol (American (1928–1987))
\$1.57 Giant Size (II.2), edition 47/75, 1963,
 signed & numbered in 1971
 screenprint
 12 1/4 x 12 1/4 in.
 1999.119



Andy Warhol (American (1928–1987))
Birmingham Race Riot, from the portfolio
Ten Works x Ten Painters, edition
 174/500, 1964
 screenprint
 20 1/8 x 24 in.
 2006.97j



Andy Warhol (American (1928–1987))
Marilyn Monroe, I Love Your Kiss Forever,
 from *1¢ Life*, edition 71/100, 1964
 lithograph
 16 1/8 x 22 3/4 in.
 2013.73oo



Andy Warhol (American (1928–1987))
Jacqueline Kennedy III, plate 6 from the
Portfolio 11 Pop Artists, Vol. III, edition
 54/200, 1965
 screenprint
 40 x 30 in.
 2008.242i



Andy Warhol (American (1928–1987))
S&H Green Stamps (II.9), edition of
 approximately 300, 1965
 offset lithograph
 23 x 22 3/4 in.
 2006.139



After Andy Warhol
The Souper Dress, from an edition of
 unknown size, 1965 circa
 screenprint on cotton paper dress
 38 x 22 in.
 2005.249



Andy Warhol (American (1928–1987))
Jacqueline Kennedy II (Jackie II), from *11 Pop Artists II (II.14)*, ed. 81/200, 1965 printed,
 released and dated in 1996
 screenprint
 24 x 30 in.
 2001.88e



Andy Warhol (American (1928–1987))
Jacqueline Kennedy I (Jackie I), from *11 Pop Artists I*, (II.13), ed. 121/200, 1965
 printed, released and dated 1966
 screenprint
 20 5/8 x 17 1/8 in.
 2001.87b



Andy Warhol (American (1928–1987))
Campbell's Soup Can (Tomato) (II.4a), edition of unknown size, 1966
 screenprint on shopping bag
 16 x 9 1/8 in.
 2016.96



Andy Warhol (American (1928–1987))
Banana (II.10), edition of approx. 300, 1966
 circa
 two screenprints on styrene and laminated plastic
 23 3/4 x 53 3/4 in.
 2004.325



Andy Warhol (American (1928–1987))
Andy Warhol's Index (Book), edition of unlimited size, 1967
 offset lithograph on paper
 11 1/4 x 8 3/4 in.
 2013.58



Andy Warhol (American (1928–1987))
Andy Warhol's Index (Book), edition of unlimited size, 1967
 book
 11 x 8 1/2 x 3/4 in.
 2003.184



Andy Warhol (American (1928–1987))
Marilyn Monroe (Marilyn), (II.22), AP edition C/Z, 1967
 screenprint
 36 x 36 in.
 2001.51a



Andy Warhol (American (1928–1987))
Marilyn Monroe (Marilyn), (II.23), AP edition C/Z, 1967
 screenprint
 36 x 36 in.
 2001.51b



Andy Warhol (American (1928–1987))
Marilyn Monroe (Marilyn), (II.24), AP edition C/Z, 1967
 screenprint
 36 x 36 in.
 2001.51c



Andy Warhol (American (1928–1987))
Marilyn Monroe (Marilyn), (II.25), AP edition C/Z, 1967
 screenprint
 36 x 36 in.
 2001.51d



Andy Warhol (American (1928–1987))
Marilyn Monroe (Marilyn), (II.26), AP edition C/Z, 1967
 screenprint
 36 x 36 in.
 2001.51e



Andy Warhol (American (1928–1987))
Marilyn Monroe (Marilyn), (II.27), AP edition C/Z, 1967
 screenprint
 36 x 36 in.
 2001.51f



Andy Warhol (American (1928–1987))
Marilyn Monroe (Marilyn), (II.28), AP edition C/Z, 1967
 screenprint
 36 x 36 in.
 2001.51g



Andy Warhol (American (1928–1987))
Marilyn Monroe (Marilyn), (II.29), AP edition C/Z, 1967
 screenprint
 36 x 36 in.
 2001.51h



Andy Warhol (American (1928–1987))
Marilyn Monroe (Marilyn), (II.30), AP edition C/Z, 1967
 screenprint
 36 x 36 in.
 2001.51i



Andy Warhol (American (1928–1987))
Marilyn Monroe (Marilyn), (II.31), AP edition C/Z, 1967
 screenprint
 36 x 36 in.
 2001.51j



Andy Warhol (American (1928–1987))
Self Portrait (III.C.1[b]), 1967 circa
 screenprint on colored graphic art paper
 19 7/8 x 12 7/8 in.
 2015.257



Andy Warhol (American (1928–1987))
Self-Portrait (III.C.1[a]), 1967 circa
 screenprint
 18 x 11 3/4 in.
 1999.59



Andy Warhol (American (1928–1987))
Campbell's Soup I: Beef Consomme (II.52), AP edition E/Z, 1968
 screenprint
 35 x 23 in.
 1999.47i



Andy Warhol (American (1928–1987))
Campbell's Soup I: Beef (II.49), AP edition
E/Z, 1968
screenprint
35 x 23 in.
1999.47f



Andy Warhol (American (1928–1987))
Campbell's Soup I: Black Bean (II.44), AP edition
E/Z, 1968
screenprint
35 x 23 in.
1999.47a



Andy Warhol (American (1928–1987))
Campbell's Soup I: Chicken Noodle (II.45), AP edition
E/Z, 1968
screenprint
35 x 23 in.
1999.47b



Andy Warhol (American (1928–1987))
Campbell's Soup I: Cream of Mushroom (II.53), AP edition
E/Z, 1968
screenprint
35 x 23 in.
1999.47j



Andy Warhol (American (1928–1987))
Campbell's Soup I: Green Pea (II.50), AP edition
E/Z, 1968
screenprint
35 x 23 in.
1999.47g



Andy Warhol (American (1928–1987))
Campbell's Soup I: Onion (II.47), AP edition
E/Z, 1968
screenprint
35 x 23 in.
1999.47d



Andy Warhol (American (1928–1987))
Campbell's Soup I: Pepper Pot (II.51), AP edition
E/Z, 1968
screenprint
35 x 23 in.
1999.47h



Andy Warhol (American (1928–1987))
Campbell's Soup I: Tomato (II.46), AP edition
E/Z, 1968
screenprint
35 x 23 in.
1999.47c



Andy Warhol (American (1928–1987))
Campbell's Soup I: Vegetable (II.48), AP edition
E/Z, 1968
screenprint
35 x 23 in.
1999.47e



Andy Warhol (American (1928–1987))
Flash–November 22, 1963 (cover), edition
78/200, 1968
screenprint on cloth
22 1/2 x 44 3/4 in.
2003.102l



Andy Warhol (American (1928–1987))
Flash–November 22, 1963 (II.32), edition
78/200, 1968
screenprint
22 1/2 x 22 1/2 in.
2003.102a



Andy Warhol (American (1928–1987))
Flash–November 22, 1963 (II.33), edition
78/200, 1968
screenprint
22 1/2 x 22 1/2 in.
2003.102b



Andy Warhol (American (1928–1987))
Flash–November 22, 1963 (II.34), edition
78/200, 1968
screenprint
22 1/2 x 22 1/2 in.
2003.102c



Andy Warhol (American (1928–1987))
Flash–November 22, 1963 (II.35), edition
78/200, 1968
screenprint
22 1/2 x 22 1/2 in.
2003.102d



Andy Warhol (American (1928–1987))
Flash–November 22, 1963 (II.36), edition
78/200, 1968
screenprint
22 1/2 x 22 1/2 in.
2003.102e



Andy Warhol (American (1928–1987))
Flash–November 22, 1963 (II.37), edition
78/200, 1968
screenprint
22 1/2 x 22 1/2 in.
2003.102f



Andy Warhol (American (1928–1987))
Flash–November 22, 1963 (II.38), edition
78/200, 1968
screenprint
22 1/2 x 22 1/2 in.
2003.102g



Andy Warhol (American (1928–1987))
Flash–November 22, 1963 (II.39), edition
78/200, 1968
screenprint
22 1/2 x 22 1/2 in.
2003.102h



Andy Warhol (American (1928–1987))
Flash–November 22, 1963 (II.40), edition 78/200, 1968
screenprint
22 1/2 x 22 1/2 in.
2003.102i



Andy Warhol (American (1928–1987))
Flash–November 22, 1963 (II.41), edition 78/200, 1968
screenprint
22 1/2 x 22 1/2 in.
2003.102j



Andy Warhol (American (1928–1987))
Flash–November 22, 1963 (II.42), edition 78/200, 1968
screenprint
22 1/2 x 22 1/2 in.
2003.102k



Andy Warhol (American (1928–1987))
Campbell's Soup II: Cheddar Cheese (II.63), edition 160/250, 1969
screenprint
35 x 23 in.
2003.103j



Andy Warhol (American (1928–1987))
Campbell's Soup II: Chicken 'N Dumplings (II.58), edition 160/250, 1969
screenprint
35 x 23 in.
2003.103e



Andy Warhol (American (1928–1987))
Campbell's Soup II: Golden Mushroom (II.62), edition 160/250, 1969
screenprint
35 x 23 in.
2003.103i



Andy Warhol (American (1928–1987))
Campbell's Soup II: Hot Dog Bean (II.59), edition 160/250, 1969
screenprint
35 x 23 in.
2003.103f



Andy Warhol (American (1928–1987))
Campbell's Soup II: New England Clam Chowder (II.57), edition 160/250, 1969
screenprint
35 x 23 in.
2003.103d



Andy Warhol (American (1928–1987))
Campbell's Soup II: Old Fashioned Vegetable (II.54), edition 160/250, 1969
screenprint
35 x 23 in.
2003.103a



Andy Warhol (American (1928–1987))
Campbell's Soup II: Oyster Stew (Il.60),
edition 160/250, 1969
screenprint
35 x 23 in.
2003.103g



Andy Warhol (American (1928–1987))
Campbell's Soup II: Scotch Broth (Il.55),
edition 160/250, 1969
screenprint
35 x 23 in.
2003.103b



Andy Warhol (American (1928–1987))
Campbell's Soup II: Tomato-Beef Noodle O's
(Il.61), edition 160/250, 1969
screenprint
35 x 23 in.
2003.103h



Andy Warhol (American (1928–1987))
Campbell's Soup II: Vegetarian Vegetable
(Il.56), edition 160/250, 1969
screenprint
35 x 23 in.
2003.103c



Andy Warhol (American (1928–1987))
Flowers (Il.64–73?), edition ?, 1970
screenprint
38 1/8 x 38 1/8 in.
2006.162



Andy Warhol (American (1928–1987))
Flowers (Il.64–73?), edition ?, 1970
screenprint
38 1/8 x 38 1/8 in.
2006.160



Andy Warhol (American (1928–1987))
Flowers (Il.64–73?), edition ?, 1970
screenprint
38 1/8 x 38 1/8 in.
2006.161



Andy Warhol (American (1928–1987))
Flowers (Il.73), edition 201/250, 1970
screenprint
36 1/8 x 36 1/8 in.
2015.842



Andy Warhol (American (1928–1987))
Electric Chair (Il.74), edition 183/250, 1971
screenprint
35 1/2 x 48 in.
2002.82a



Andy Warhol (American (1928–1987))
Electric Chair (II.75), edition 183/250,
 1971
 screenprint
 35 1/2 x 48 in.
 2002.82b



Andy Warhol (American (1928–1987))
Electric Chair (II.76), edition 183/250, 1971
 screenprint
 35 1/2 x 48 in.
 2002.82c



Andy Warhol (American (1928–1987))
Electric Chair (II.77), edition 183/250, 1971
 screenprint
 35 1/2 x 48 in.
 2002.82d



Andy Warhol (American (1928–1987))
Electric Chair (II.78), edition 183/250,
 1971
 screenprint
 35 1/2 x 48 in.
 2002.82e



Andy Warhol (American (1928–1987))
Electric Chair (II.79), edition 183/250, 1971
 screenprint
 35 1/2 x 48 in.
 2002.82f



Andy Warhol (American (1928–1987))
Electric Chair (II.80), edition 183/250, 1971
 screenprint
 35 1/2 x 48 in.
 2002.82g



Andy Warhol (American (1928–1987))
Electric Chair (II.81), edition 183/250,
 1971
 screenprint
 35 1/2 x 48 in.
 2002.82h



Andy Warhol (American (1928–1987))
Electric Chair (II.82), edition 183/250, 1971
 screenprint
 35 1/2 x 48 in.
 2002.82i



Andy Warhol (American (1928–1987))
Electric Chair (II.83), edition 183/250, 1971
 screenprint
 35 1/2 x 48 in.
 2002.82j



Andy Warhol (American (1928–1987))
Electric Chair, unpublished trial proof,
1971
screenprint
35 1/2 x 47 7/8 in.
2003.136



Andy Warhol (American (1928–1987))
Electric Chair, unpublished trial proof, 1971
screenprint
35 1/2 x 47 7/8 in.
2003.135



Andy Warhol (American (1928–1987))
Electric Chair, unpublished trial proof, 1971
screenprint
35 1/2 x 47 7/8 in.
2003.137



Andy Warhol (American (1928–1987))
Mao (II.90), edition 212/250, 1972
screenprint
36 x 36 in.
2000.123a



Andy Warhol (American (1928–1987))
Mao (II.91), edition 212/250, 1972
screenprint
36 x 36 in.
2000.123b



Andy Warhol (American (1928–1987))
Mao (II.92), edition 212/250, 1972
screenprint
36 x 36 in.
2000.123c



Andy Warhol (American (1928–1987))
Mao (II.93), edition 212/250, 1972
screenprint
36 x 36 in.
2000.123d



Andy Warhol (American (1928–1987))
Mao (II.94), edition 212/250, 1972
screenprint
36 x 36 in.
2000.123e



Andy Warhol (American (1928–1987))
Mao (II.95), edition 212/250, 1972
screenprint
36 x 36 in.
2000.123f



Andy Warhol (American (1928–1987))
Mao (II.96), edition 212/250, 1972
 screenprint
 36 x 36 in.
 2000.123g



Andy Warhol (American (1928–1987))
Mao (II.97), edition 212/250, 1972
 screenprint
 36 x 36 in.
 2000.123h



Andy Warhol (American (1928–1987))
Mao (II.98), edition 212/250, 1972
 screenprint
 36 x 36 in.
 2000.123i



Andy Warhol (American (1928–1987))
Mao (II.99), edition 212/250, 1972
 screenprint
 36 x 36 in.
 2000.123j



Andy Warhol (American (1928–1987))
Sunset, edition 23/470, 1972
 screenprint
 34 x 34 in.
 2015.819



Andy Warhol (American (1928–1987))
Sunset, edition 393/470, 1972
 screenprint
 34 x 34 in.
 2003.104a



Andy Warhol (American (1928–1987))
Sunset, edition 401/470, 1972
 screenprint
 34 x 34 in.
 2003.104b



Andy Warhol (American (1928–1987))
Sunset, edition 467/470, 1972
 screenprint
 34 x 34 in.
 2003.104c



Andy Warhol (American (1928–1987))
Sunset, edition 470/470, 1972
 screenprint
 34 x 34 in.
 2003.104d



Andy Warhol (American (1928–1987))

Sunset, edition 77/470, 1972

screenprint
34 x 34 in.
2015.211



Andy Warhol (American (1928–1987))

Untitled (IIA.89), from the portfolio *The New York Collection for Stockholm*, edition 110/300, 1973

drawing sequentially reproduced on a photocopier
11 x 8 9/16 in.
2008.209cc



Andy Warhol (American (1928–1987))

Flowers (Hand-Colored) (IIA.110), edition AP 39/50, 1974

screenprint
41 x 29 1/4 in.
2003.105a



Andy Warhol (American (1928–1987))

Flowers (Hand-Colored) (IIA.111), edition AP 39/50, 1974

screenprint
40 1/2 x 29 1/8 in.
2003.105b



Andy Warhol (American (1928–1987))

Flowers (Hand-Colored) (IIA.112), edition AP 39/50, 1974

screenprint
41 1/4 x 27 3/8 in.
2003.105c



Andy Warhol (American (1928–1987))

Flowers (Hand-Colored) (IIA.113), edition AP 39/50, 1974

screenprint
40 1/8 x 27 1/8 in.
2003.105d



Andy Warhol (American (1928–1987))

Flowers (Hand-Colored) (IIA.114), edition AP 39/50, 1974

screenprint
40 1/4 x 27 in.
2003.105e



Andy Warhol (American (1928–1987))

Flowers (Hand-Colored) (IIA.115), edition AP 39/50, 1974

screenprint
41 1/4 x 28 1/8 in.
2003.105f



Andy Warhol (American (1928–1987))

Flowers (Hand-Colored) (IIA.116), edition AP 39/50, 1974

screenprint
40 1/2 x 27 1/8 in.
2003.105g



Andy Warhol (American (1928–1987))
Flowers (Hand-Colored) (IIA.117), edition AP 39/50, 1974
screenprint
40 5/8 x 29 5/8 in.
2003.105h



Andy Warhol (American (1928–1987))
Flowers (Hand-Colored) (IIA.118), edition AP 39/50, 1974
screenprint
40 1/4 x 25 in.
2003.105i



Andy Warhol (American (1928–1987))
Flowers (Hand-Colored) (IIA.119), edition AP 39/50, 1974
screenprint
41 5/8 x 29 5/8 in.
2003.105j



Andy Warhol (American (1928–1987))
Ladies and Gentlemen (II.128), edition AP 14/25, 1975
screenprint
43 1/2 x 28 1/2 in.
2012.45a



Andy Warhol (American (1928–1987))
Ladies and Gentlemen (II.129), edition AP 14/25, 1975
screenprint
43 1/2 x 28 1/2 in.
2012.45b



Andy Warhol (American (1928–1987))
Ladies and Gentlemen (II.130), edition AP 14/25, 1975
screenprint
43 1/2 x 28 1/2 in.
2012.45c



Andy Warhol (American (1928–1987))
Ladies and Gentlemen (II.131), edition AP 14/25, 1975
screenprint
43 1/2 x 28 1/2 in.
2012.45d



Andy Warhol (American (1928–1987))
Ladies and Gentlemen (II.132), edition AP 14/25, 1975
screenprint
43 1/2 x 28 1/2 in.
2012.45e



Andy Warhol (American (1928–1987))
Ladies and Gentlemen (II.133), edition AP 14/25, 1975
screenprint
43 1/2 x 28 1/2 in.
2012.45f



Andy Warhol (American (1928–1987))
Ladies and Gentlemen (II.134), edition AP
14/25, 1975
screenprint
43 1/2 x 28 1/2 in.
2012.45g



Andy Warhol (American (1928–1987))
Ladies and Gentlemen (II.135), edition AP
14/25, 1975
screenprint
43 1/2 x 28 1/2 in.
2012.45h



Andy Warhol (American (1928–1987))
Ladies and Gentlemen (II.136), edition AP
14/25, 1975
screenprint
43 1/2 x 28 1/2 in.
2012.45i



Andy Warhol (American (1928–1987))
Ladies and Gentlemen (II.137), edition AP
14/25, 1975
screenprint
43 1/2 x 28 1/2 in.
2012.45j



Andy Warhol (American (1928–1987))
Mick Jagger (II.138), edition 25/250, 1975
screenprint
43 1/2 x 29 in.
2003.107a



Andy Warhol (American (1928–1987))
Mick Jagger (II.139), edition 25/250, 1975
screenprint
43 1/2 x 29 in.
2003.107b



Andy Warhol (American (1928–1987))
Mick Jagger (II.140), edition 25/250, 1975
screenprint
43 1/2 x 29 in.
2003.107c



Andy Warhol (American (1928–1987))
Mick Jagger (II.141), edition 25/250, 1975
screenprint
43 1/2 x 29 in.
2003.107d



Andy Warhol (American (1928–1987))
Mick Jagger (II.142), edition 25/250, 1975
screenprint
43 1/2 x 29 in.
2003.107e



Andy Warhol (American (1928–1987))
Mick Jagger (II.143), edition 25/250, 1975
 screenprint
 43 1/2 x 29 in.
 2003.107f



Andy Warhol (American (1928–1987))
Mick Jagger (II.144), edition 25/250, 1975
 screenprint
 43 1/2 x 29 in.
 2003.107g



Andy Warhol (American (1928–1987))
Mick Jagger (II.145), edition 25/250, 1975
 screenprint
 43 1/2 x 29 in.
 2003.107h



Andy Warhol (American (1928–1987))
Mick Jagger (II.146), edition 25/250, 1975
 screenprint
 43 1/2 x 29 in.
 2003.107i



Andy Warhol (American (1928–1987))
Mick Jagger (II.147), edition 25/250, 1975
 screenprint
 43 1/2 x 29 in.
 2003.107j



Andy Warhol (American (1928–1987))
Paloma Picasso, from the portfolio America's Hommage a Picasso vol. VI (II.121), edition AP 4/15, 1975
 screenprint
 41 x 29 1/2 in.
 2003.108



Andy Warhol (American (1928–1987))
Jimmy Carter I (II.150), edition AP 23/25, 1976
 screenprint
 39 1/4 x 29 1/2 in.
 2003.110



Andy Warhol (American (1928–1987))
Skulls (II.157), edition AP 5/10, 1976
 screenprint
 30 x 40 in.
 2003.109a



Andy Warhol (American (1928–1987))
Skulls (II.158), edition AP 5/10, 1976
 screenprint
 30 x 40 in.
 2003.109b



Andy Warhol (American (1928–1987))
Skulls (II.159), edition AP 5/10, 1976
screenprint
30 x 40 in.
2003.109c



Andy Warhol (American (1928–1987))
Skulls (II.160), edition AP 5/10, 1976
screenprint
30 x 40 in.
2003.109d



Andy Warhol (American (1928–1987))
Skull (III.A.1(a)), 1976 circa
screenprint
27 1/8 x 40 in.
2006.177



Andy Warhol (American (1928–1987))
Hammer and Sickle (Special Edition) (II.165), edition 1/10, 1977
screenprint
30 x 40 in.
2003.113a



Andy Warhol (American (1928–1987))
Hammer and Sickle (Special Edition) (II.166), edition 1/10, 1977
screenprint
30 x 40 in.
2003.113b



Andy Warhol (American (1928–1987))
Hammer and Sickle (Special Edition) (II.167), edition 1/10, 1977
screenprint
30 x 40 in.
2003.113c



Andy Warhol (American (1928–1987))
Hammer and Sickle (Special Edition) (II.168), edition 1/10, 1977
screenprint
30 x 40 in.
2003.113d



Andy Warhol (American (1928–1987))
Hammer and Sickle (Special Edition) (II.169), edition 1/10, 1977
screenprint
30 x 40 in.
2003.113e



Andy Warhol (American (1928–1987))
Hammer and Sickle (Special Edition) (II.170), edition 1/10, 1977
screenprint
30 x 40 in.
2003.113f



Andy Warhol (American (1928–1987))
Hammer and Sickle (Special Edition)
(II.171), edition 1/10, 1977
screenprint
30 x 40 in.
2003.113g



Andy Warhol (American (1928–1987))
Untitled (Love You Live), from an edition of
24, 1977
screenprint on vinyl
46 x 36 1/2 in.
2007.422



Andy Warhol (American (1928–1987))
Self-Portrait (IIIC.25(b)), 1977 circa
screenprint
50 x 38 in.
2008.84



Andy Warhol (American (1928–1987))
Self-Portrait (IIIC.27(a)), 1977 circa
screenprint
45 x 34 7/8 in.
2000.23



Andy Warhol (American (1928–1987))
Self-Portrait (IIIC.30?), 1977 circa
screenprint
45 x 35 in.
2003.142



Andy Warhol (American (1928–1987))
Muhammad Ali (II.179), edition 43/150,
1978
screenprint
40 x 30 in.
2003.114a



Andy Warhol (American (1928–1987))
Muhammad Ali (II.180), edition 43/150,
1978
screenprint
40 x 30 in.
2003.114b



Andy Warhol (American (1928–1987))
Muhammad Ali (II.181), edition 43/150,
1978
screenprint
40 x 30 in.
2003.114c



Andy Warhol (American (1928–1987))
Muhammad Ali (II.182), edition 43/150,
1978
screenprint
40 x 30 in.
2003.114d



Andy Warhol (American (1928–1987))
Sex Parts (II.172), edition AP 3/5, 1978
screenprint
31 x 23 1/4 in.
2006.143a



Andy Warhol (American (1928–1987))
Sex Parts (II.173), edition AP 3/5, 1978
screenprint
31 x 23 1/4 in.
2006.143b



Andy Warhol (American (1928–1987))
Sex Parts (II.174), edition AP 3/5, 1978
screenprint
31 x 23 1/4 in.
2006.143c



Andy Warhol (American (1928–1987))
Sex Parts (II.175), edition AP 3/5, 1978
screenprint
31 x 23 1/4 in.
2006.143d



Andy Warhol (American (1928–1987))
Sex Parts (II.176), edition AP 3/5, 1978
screenprint
31 x 23 1/4 in.
2006.143e



Andy Warhol (American (1928–1987))
Sex Parts (II.177), edition AP 3/5, 1978
screenprint
31 x 23 1/4 in.
2006.143f



Andy Warhol (American (1928–1987))
Car Crash (IIIA.9), personal project, 1978
circa
screenprint
33 3/8 x 45 1/8 in.
2015.854



Andy Warhol (American (1928–1987))
Flower (Retrospective Series) (IIIA.14b), 1978
circa
screenprint
48 1/2 x 42 in.
2006.168



Andy Warhol (American (1928–1987))
Liza Minnelli (IIIC.34(c)), 1978 circa
screenprint
45 x 35 in.
2006.170



Andy Warhol (American (1928–1987))
Marilyn Monroe (Marilyn) (Retrospective Series) (IIIA.3 (a or b)), 1978 circa
 screenprint
 45 x 35 in.
 2006.176



Andy Warhol (American (1928–1987))
Studio 54 Complimentary Drink Invitation (IIIA.16 (a)), 1978 circa
 screenprint
 38 3/8 x 25 in.
 2007.163



Andy Warhol (American (1928–1987))
Shadows I (II.204), edition 6/15, 1979
 screenprint
 43 x 30 1/2 in.
 2003.117a



Andy Warhol (American (1928–1987))
Shadows I (II.205), edition 6/15, 1979
 screenprint
 43 x 30 1/2 in.
 2003.117b



Andy Warhol (American (1928–1987))
Shadows I (II.206), edition 6/15, 1979
 screenprint
 43 x 30 1/2 in.
 2003.117c



Andy Warhol (American (1928–1987))
Shadows I (II.207), edition 6/15, 1979
 screenprint
 43 x 30 1/2 in.
 2003.117d



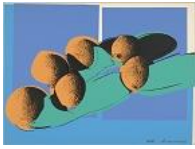
Andy Warhol (American (1928–1987))
Shadows I (II.208), edition 6/15, 1979
 screenprint
 43 x 30 1/2 in.
 2003.117e



Andy Warhol (American (1928–1987))
Shadows I (II.209), edition 6/15, 1979
 screenprint
 43 x 30 1/2 in.
 2003.117f



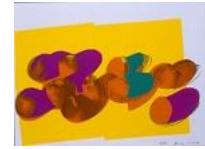
Andy Warhol (American (1928–1987))
Space Fruit: Still Lifes, Apples (II.200), edition 19/30, 1979
 screenprint
 30 x 40 in.
 2003.116c



Andy Warhol (American (1928–1987))
Space Fruit: Still Lifes, Cantaloupes I
(II.201), edition 19/30, 1979
screenprint
30 x 40 in.
2003.116d



Andy Warhol (American (1928–1987))
Space Fruit: Still Lifes, Cantaloupes II (II.198),
edition 19/30, 1979
screenprint
30 x 40 in.
2003.116a



Andy Warhol (American (1928–1987))
Space Fruit: Still Lifes, Peaches (II.202),
edition 19/30, 1979
screenprint
30 x 40 in.
2003.116e



Andy Warhol (American (1928–1987))
Space Fruit: Still Lifes, Pears (II.203),
edition 19/30, 1979
screenprint
30 x 40 in.
2003.116f



Andy Warhol (American (1928–1987))
Space Fruit: Still Lifes, Watermelon (II.199),
edition 19/30, 1979
screenprint
30 x 40 in.
2003.116b



Andy Warhol (American (1928–1987))
*Brillo, Campbell's Soup Can (Tomato),
Coca-Cola and Hershey's*, 1979 circa
screenprint on knit T-shirt
26 x 25 1/4 in.
2007.171



Andy Warhol (American (1928–1987))
*Brillo, Campbell's Soup Can (Tomato),
Hershey's* (IIIA.24), 1979 circa
screenprint on knit T-shirt
28 5/8 x 28 in.
2007.170



Andy Warhol (American (1928–1987))
Georgia O'Keeffe (IIIC.45(c)), 1979 circa
screenprint with diamond dust
40 1/8 x 59 3/4 in.
2008.78



Andy Warhol (American (1928–1987))
R.C. Gorman (IIIC.40), 1979 circa
screenprint
44 1/2 x 41 in.
2008.62



Andy Warhol (American (1928–1987))
Truman Capote (IIC.46), 1979 circa
 screenprint
 50 x 41 1/2 in.
 2008.70



Andy Warhol (American (1928–1987))
Edward Kennedy (Deluxe Edition) (II.241),
edition DE AP 6/15, 1980
 screenprint
 40 x 32 in.
 2003.120



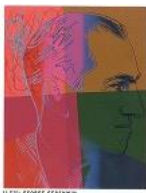
Andy Warhol (American (1928–1987))
Joseph Beuys (II.245), *edition AP 4/15*, 1980
 screenprint with diamond dust
 44 x 30 in.
 2003.121a



Andy Warhol (American (1928–1987))
*Ten Portraits of Jews of the Twentieth
 Century: Albert Einstein (II.229)*, *ed.*
182/200, 1980
 screenprint
 40 x 32 in.
 2003.118d



Andy Warhol (American (1928–1987))
*Ten Portraits of Jews of the Twentieth
 Century: Franz Kafka (II.226)* *ed.* *182/200*,
 1980
 screenprint
 40 x 32 in.
 2003.118a



Andy Warhol (American (1928–1987))
*Ten Portraits of Jews of the Twentieth
 Century: George Gershwin (II.231)*, *ed.*
182/200, 1980
 screenprint
 40 x 32 in.
 2003.118f



Andy Warhol (American (1928–1987))
*Ten Portraits of Jews of the Twentieth
 Century: Gertrude Stein (II.227)*, *ed.*
182/200, 1980
 screenprint
 40 x 32 in.
 2003.118b



Andy Warhol (American (1928–1987))
*Ten Portraits of Jews of the Twentieth
 Century: Golda Meir (II.233)*, *ed.* *182/200*,
 1980
 screenprint
 40 x 32 in.
 2003.118h



Andy Warhol (American (1928–1987))
*Ten Portraits of Jews of the Twentieth
 Century: Louis Brandeis (II.230)*, *ed.*
182/200, 1980
 screenprint
 40 x 32 in.
 2003.118e



Andy Warhol (American (1928–1987))
Ten Portraits of Jews of the Twentieth Century: Martin Buber (Il.228), ed.
 182/200, 1980
 screenprint
 40 x 32 in.
 2003.118c



Andy Warhol (American (1928–1987))
Ten Portraits of Jews of the Twentieth Century: Sarah Bernhardt (Il.234), ed.
 182/200, 1980
 screenprint
 40 x 32 in.
 2003.118i



Andy Warhol (American (1928–1987))
Ten Portraits of Jews of the Twentieth Century: Sigmund Freud (Il.235), ed.
 182/200, 1980
 screenprint
 40 x 32 in.
 2003.118j



Andy Warhol (American (1928–1987))
Ten Portraits of Jews of the Twentieth Century: The Marx Brothers (Il.232), ed.
 182/200, 1980
 screenprint
 40 x 32 in.
 2003.118g



Andy Warhol (American (1928–1987))
Myths: Howdy Doody (Il.263), edition
 183/200, 1981
 screenprint with diamond dust
 37 3/4 x 37 3/4 in.
 2015.224



Andy Warhol (American (1928–1987))
Myths: Mammy (Il.262), edition 182/200,
 1981
 screenprint
 37 3/4 x 37 3/4 in.
 2015.223



Andy Warhol (American (1928–1987))
Myths: The Shadow (Il.267), edition
 23/200, 1981
 screenprint
 37 3/4 x 37 3/4 in.
 2000.24



Andy Warhol (American (1928–1987))
Gun (not in F. & S.), 1981 circa
 screenprint
 22 x 39 7/8 in.
 1999.61



Andy Warhol (American (1928–1987))
Eric Emerson (Chelsea Girls), from the portfolio A Portfolio of Thirteen Prints (Il.287), edition HC 2/24, 1982
 screenprint
 30 x 22 in.
 2006.149



Andy Warhol (American (1928–1987))
Jane Fonda (II.268), edition 89/100, 1982
screenprint
39 1/2 x 31 1/2 in.
2003.125



Andy Warhol (American (1928–1987))
\$ (4) (II.281/282), edition 4/35, 1982
unique color screenprint
40 x 32 in.
2004.19



Andy Warhol (American (1928–1987))
Torso (Double) (IIIA.35), 1982 circa
screenprint with diamond dust
30 1/2 x 43 in.
2007.164



Andy Warhol (American (1928–1987))
Torso (Double) (IIIA.35), 1982 circa
screenprint
30 1/2 x 43 1/8 in.
2007.165



Andy Warhol (American (1928–1987))
Endangered Species: African Elephant (II.293), edition 48/150, 1983
screenprint
38 x 38 in.
2016.160a



Andy Warhol (American (1928–1987))
Endangered Species: Bald Eagle (II.296), edition 48/150, 1983
screenprint
38 x 38 in.
2016.160d



Andy Warhol (American (1928–1987))
Endangered Species: Bighorn Ram (II.302), edition 48/150, 1983
screenprint
38 x 38 in.
2016.160j



Andy Warhol (American (1928–1987))
Endangered Species: Black Rhinoceros (II.301), edition 48/150, 1983
screenprint
38 x 38 in.
2016.160i



Andy Warhol (American (1928–1987))
Endangered Species: Giant Panda (II.295), edition 48/150, 1983
screenprint
38 x 38 in.
2016.160c



Andy Warhol (American (1928–1987))
Endangered Species: Grevy's Zebra
(II.300), edition 48/150, 1983
screenprint
38 x 38 in.
2016.160h



Andy Warhol (American (1928–1987))
Endangered Species: Orangutan (II.299),
edition 48/150, 1983
screenprint
38 x 38 in.
2016.160g



Andy Warhol (American (1928–1987))
Endangered Species: Pine Barrens Tree Frog
(II.294), edition 48/150, 1983
screenprint
38 x 38 in.
2016.160b



Andy Warhol (American (1928–1987))
Endangered Species: Siberian Tiger
(II.297), edition 48/150, 1983
screenprint
38 x 38 in.
2016.160e



Andy Warhol (American (1928–1987))
Endangered Species: Silverspot Butterfly
(II.298), edition 48/150, 1983
screenprint
38 x 38 in.
2016.160f



Andy Warhol (American (1928–1987))
Love, 1983
screenprint
29 3/4 x 22 1/4 in.
2013.62



Andy Warhol (American (1928–1987))
Perrier (III B.22(d)), 1983
screenprint
43 x 30 1/2 in.
2008.60



Andy Warhol (American (1928–1987))
Perrier (III B.22(d)), 1983
screenprint
30 1/2 x 43 1/4 in.
2008.59



Andy Warhol (American (1928–1987))
Eva Mudocci (after Munch) (III A.59), 1984
screenprint
40 x 32 in.
2003.140



Andy Warhol (American (1928–1987))
Ads: Apple (Il.359), edition 112/190,
1985
screenprint
38 x 38 in.
2015.210j



Andy Warhol (American (1928–1987))
Ads: Blackglama (Judy Garland) (Il.351),
edition 112/190, 1985
screenprint
38 x 38 in.
2015.210b



Andy Warhol (American (1928–1987))
Ads: Chanel (Il.354), edition 112/190, 1985
screenprint
38 x 38 in.
2015.210e



Andy Warhol (American (1928–1987))
Ads: Lifesavers (Il.353), edition 112/190,
1985
screenprint
38 x 38 in.
2015.210d



Andy Warhol (American (1928–1987))
Ads: Mobilgas (Il.350), edition 112/190,
1985
screenprint
38 x 38 in.
2015.210a



Andy Warhol (American (1928–1987))
Ads: Paramount (Il.352), edition 112/190,
1985
screenprint
38 x 38 in.
2015.210c



Andy Warhol (American (1928–1987))
Ads: Rebel without a Cause (James Dean)
(Il.355), edition 112/190, 1985
screenprint
38 x 38 in.
2015.210f



Andy Warhol (American (1928–1987))
Ads: The New Spirit (Donald Duck) (Il.357),
edition 112/190, 1985
screenprint
38 x 38 in.
2015.210h



Andy Warhol (American (1928–1987))
Ads: Van Heusen (Ronald Reagan) (Il.356),
edition 112/190, 1985
screenprint
38 x 38 in.
2015.210g



Andy Warhol (American (1928–1987))
Ads: Volkswagon (II.358), edition
 112/190, 1985
 screenprint
 38 x 38 in.
 2015.210i



Andy Warhol (American (1928–1987))
Art \$15 (IIIA.65), 1985 circa
 screenprint on cotton T-shirt
 31 x 32 in.
 2007.175



Andy Warhol (American (1928–1987))
Art \$15 (IIIA.65), 1985 circa
 screenprint on cotton T-shirt
 32 x 33 in.
 2007.177



Andy Warhol (American (1928–1987))
Keith Haring, 1986
 screenprint on cotton t-shirt
 33 x 39 in.
 2012.48



Andy Warhol (American (1928–1987))
Self-Portrait with Fright Wig, 1986 circa
 screenprint on cotton t-shirt
 36 x 40 3/4 in.
 2012.50



Andy Warhol (American (1928–1987))
Camouflage (IIB406–413), edition TP 10/84,
 1987
 screenprint
 38 x 38 in.
 2006.156



Andy Warhol (American (1928–1987))
Camouflage (IIB406–413), edition TP
 19/84, 1987
 screenprint
 38 x 38 in.
 2006.157



Andy Warhol (American (1928–1987))
Camouflage (IIB406–413), edition TP 57/84,
 1987
 screenprint
 38 x 38 in.
 2006.158



Andy Warhol (American (1928–1987))
Camouflage (IIB406–413), edition TP 71/84,
 1987
 screenprint
 38 x 38 in.
 2006.159



Andy Warhol (American (1928–1987))
Camouflage (II.406), edition 51/80, 1987
screenprint
38 x 38 in.
2003.134a



Andy Warhol (American (1928–1987))
Camouflage (II.407), edition 51/80, 1987
screenprint
38 x 38 in.
2003.134b



Andy Warhol (American (1928–1987))
Camouflage (II.408), edition 51/80, 1987
screenprint
38 x 38 in.
2003.134c



Andy Warhol (American (1928–1987))
Camouflage (II.409), edition 51/80, 1987
screenprint
38 x 38 in.
2003.134d



Andy Warhol (American (1928–1987))
Camouflage (II.410), edition 51/80, 1987
screenprint
38 x 38 in.
2003.134e



Andy Warhol (American (1928–1987))
Camouflage (II.411), edition 51/80, 1987
screenprint
38 x 38 in.
2003.134f



Andy Warhol (American (1928–1987))
Camouflage (II.412), edition 51/80, 1987
screenprint
38 x 38 in.
2003.134g



Andy Warhol (American (1928–1987))
Camouflage (II.413), edition 51/80, 1987
screenprint
38 x 38 in.
2003.134h



Andy Warhol (American (1928–1987))
Moonwalk (II.405), edition 150/160, 1987
screenprint
37 7/8 x 37 7/8 in.
2016.116