

A Passionate Eye: 06/05/2015

1.

Gregory Sumida, American, born 1948

Amputated, 1972

watercolor on paper

22 x 30 inches

Gift of Mr. and Mrs. Ted Weiner

2-1973



2.

Marino Marini, Italian, 1901-1980

The Warrior, 1959-1960

bronze, edition 1/3

75 3/4 x 144 5/8 x 82 5/8 inches

Gift of Mr. and Mrs. Ted Weiner

2-1978



3.

Henry Moore, British, 1898-1986

Two Piece Reclining Figure No. 3, 1961

bronze, edition 1/7

57 3/4 x 99 x 45 3/4 inches

Gift of Gwendolyn Weiner

14-1996



4.

Alexander Calder, American, 1898-1976

Lizard (Lézard), 1968

painted metal

104 1/2 x 165 x 31 3/4 inches

Gift of Gwendolyn Weiner in honor of Harold Meyerman

80-2011



5.

Manuel Felguérez, Mexican, born 1928

Contrition, 1958

bronze

44 x 28 x 20 inches

Gift of Gwendolyn Weiner

83-1980



6.

Jean Arp, French, born Germany, 1886 - 1966

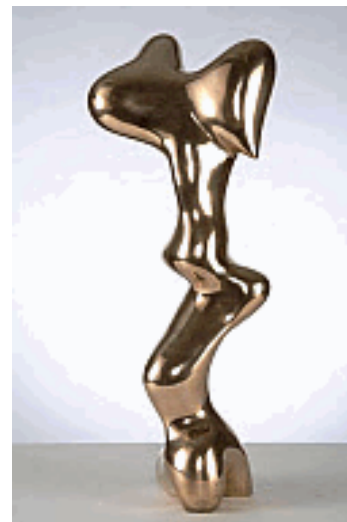
Growth, 1938

bronze with gold patina, edition of 3

31 x 11 1/2 x 7 3/4 inches

75th Anniversary gift of Gwendolyn Weiner in honor of Executive Director Steven Nash

101-2013



7.

Adolph Gottlieb, American, 1903-1974

Composition (Red Halo), 1960

ink and pastel on paper

30 7/8 x 22 3/8 inches (sheet size)

Gift of Gwendolyn Weiner

109-2010



8.

Franz Kline, American, 1910-1962

Black and White Drawing, 1955

oil wash on paper

12 1/2 x 9 1/8 inches

Gift of Gwendolyn Weiner

111-2010



9.

Marc Chagall, Russian, 1887-1985

The Village (Le Village), 1950-1952

mural ceramic, 16 tiles (16 carreaux)

48 x 52 inches (12 x 13 inches each tile)

Gift of Gwendolyn Weiner

156-2009



10.

Pablo Picasso, Spanish, 1881-1973

Owl (Hibou or Gros Oiseau et Visage noir), 1951

glazed white earthenware clay, decoration in engobes, knife engraved and painted, 7/25
21 1/4 x 17 1/2 x 15 1/4 inches

Gift of Gwen Weiner for the contribution of Board and staff toward the success of the 75th Anniversary Gala
2014.74



11.

Henry Moore, British, 1898-1986

Reclining Figure, 1956

bronze, edition 3/7

33 3/4 x 91 3/4 x 37 3/4 inches

Partial and promised gift of Gwendolyn Weiner

2014.181



12.

Alexander Calder, American, 1898-1976

Chapeau Phrygien, 1968

gouache on paper

Site: 29 1/4 x 43 in. (74.3 x 109.2 cm)

Collection of Gwendolyn Weiner

L1980-3.2



13.

Dimitri Hadzi, American, 1921-2006

Centaur, 1957-1958

bronze, edition 3/4

25 1/2 x 28 3/4 x 20 3/4 inches

Collection of Gwendolyn Weiner

L1980-3.6



14.

Jacques Lipchitz, French, born Lithuania, 1891-1973

Hagar in the Desert (Hagar III), 1957

bronze, edition 3/7

Overall: 34 3/4 x 33 x 24 3/4 in. (88.3 x 83.8 x 62.9 cm)

Collection of Gwendolyn Weiner

L1980-3.11



15.

Jacques Lipchitz, French, born Lithuania, 1891-1973

The Harpists, 1930

bronze

Overall: 17 x 16 1/4 x 18 1/4 in. (43.2 x 41.3 x 46.4 cm)

Collection of Gwendolyn Weiner

L1980-3.12



16.

Joan Miro, Spanish, 1893-1983

Bird of Paradise (L'Oiseau du Paradis), 1963

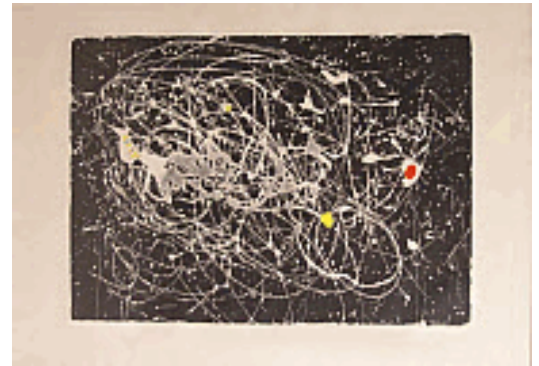
color aquatint, edition 22/75

Frame: 30 1/4 x 41 5/8 in. (76.8 x 105.7 cm)

Image: 22 x 31 in. (55.9 x 78.7 cm)

Collection of Gwendolyn Weiner

L1980-3.13



17.

Henry Moore, British, 1898-1986

Bird, 1959

bronze, edition of 12

4 x 15 x 5 1/4 inches

Collection of Gwendolyn Weiner

L1980-3.14



18.

Henry Moore, British, 1898-1986

Helmet Head No. 2, 1950

bronze, edition of 9 (cast 1955)

13 1/4 x 9 1/2 x 9 1/2 inches

Collection of Gwendolyn Weiner

L1980-3.15



19.

Henry Moore, British, 1898-1986

Mother and Child: Hollow, 1959

bronze, edition of 12

13 1/8 x 4 1/4 x 5 1/4 inches

Collection of Gwendolyn Weiner

L1980-3.16



20.

Henry Moore, British, 1898-1986

Stringed Figure (Bowl), 1939

bronze with dyed elastic string, edition 2/9

21 5/8 x 9 x 10 inches

Collection of Gwendolyn Weiner

L1980-3.19



21.

Henry Moore, British, 1898-1986

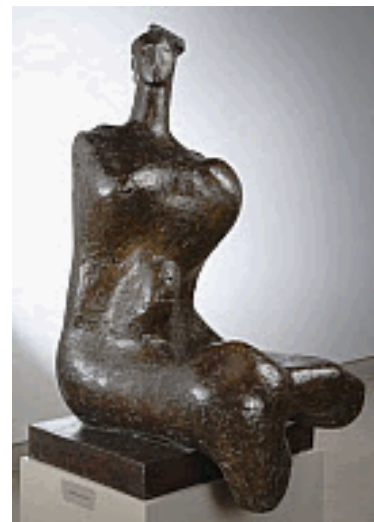
Woman (Seated Torso or Parze), 1957-1958

bronze, edition 2/4

60 1/4 x 31 1/8 x 36 inches

Collection of Gwendolyn Weiner

L1980-3.20



22.

Henry Moore, British, 1898-1986

Two Seated Figures Against Wall (or Two Seated Girls Against Wall),
1960

bronze and copper sheet over wood base, edition of 12

19 5/8 x 19 1/4 x 10 inches

Collection of Gwendolyn Weiner

L1980-3.21



23.

Isamu Noguchi, American, 1904-1988

Tetsubin, 1961

bronze

base (painted wood base): 3 1/2 x 8 x 8 in. (8.9 x 20.3 x 20.3 cm)

object (dimensions of sculpture without base): 9 1/4 x 11 x 10 3/4 in.
(23.5 x 27.9 x 27.3 cm)

L1980-3.22



24.

Gene W. Owens, American, born 1931

And The Bush Was Not Consumed, 1960

bronze, granite

14 1/2 x 16 x 15 inches

Collection of Gwendolyn Weiner

L1980-3.23



25.

Melvin Schuler, American, born 1924

Caged Form, 1968

black walnut and steel

71-1/4 x 40 x 26-1/2 inches

Collection of Gwendolyn Weiner

L1980-3.26



26.

Ossip Zadkine, French, born Russia, 1890-1967

The Van Gogh Brothers Seated (Les Frères Van Gogh Assis), 1963, 1963

bronze, edition 1/6

16 3/4 x 13 5/8 x 14 inches

Collection of Gwendolyn Weiner

L1980-3.33



27.

Jack Zajac, American, born 1929

Deposition II, 1960

bronze

73 1/4 x 57 1/2 x 46 1/2 inches

Collection of Gwendolyn Weiner

L1980-3.34



28.

Enrico Donati, American, born Italy, 1909-2008

Stalagmite, 1967

oil and sand on canvas

26-1/4 x 31-1/2 inches

Collection of Gwendolyn Weiner

L1980-4.2



29.

Lyonel Feininger, American, 1871-1956

Gelmeroda II, 1946

watercolor and ink on paper

Overall: 18 7/8 x 13 5/8 in. (47.9 x 34.6 cm)

Collection of Gwendolyn Weiner

L1980-4.3



30.

Lyonel Feininger, American, 1871-1956

Gothic Church II, 1942

watercolor and ink on paper

Site: 18 x 13 in. (45.7 x 33 cm)

Collection of Gwendolyn Weiner

L1980-4.4



31.

Franz Kline, American, 1910-1962

Lyre Bird, 1957

oil on board

overall: 18 3/4 × 24 in. (47.6 × 61 cm)

Collection of Gwendolyn Weiner

L1980-4.8



32.

Franz Kline, American, 1910-1962

Study For Accent Grave, 1954

oil wash on paper

14 x 9 3/4 inches

Collection of Gwendolyn Weiner

L1980-4.10



33.

Peter Voukos, American, 1924-2002

Pottery #2, 1959

stoneware with low fire glaze

overall: 20 1/2 × 14 1/2 × 8 1/2 in. (52.1 × 36.8 × 21.6 cm)

Collection of Gwendolyn Weiner

L1980-4.14



34.

Germaine Richier, French, 1904-1959

Large Horse with Six Heads (Le Grande Cheval à Six Têtes),
1954-1956

bronze, artist's copy

41 x 44 x 20 inches

Collection of Gwendolyn Weiner

L1980-4.15



35.

Peter Voulkos, American, 1924-2002

Double-neck Vase, 1959

stoneware with white slip painted with color slips

overall: 19 1/2 x 9 1/2 x 9 1/4 in. (49.5 x 24.1 x 23.5 cm)

Collection of Gwendolyn Weiner

L1982-9



36.

Marino Marini, Italian, 1901-1980

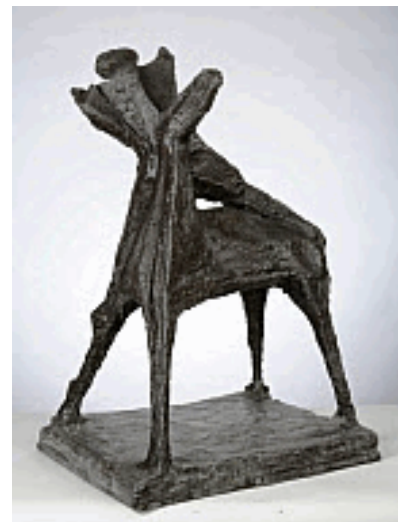
Horse and Rider, 1953-1955

bronze, edition 5/6

45 x 32 x 24 1/2 inches

Collection of Gwendolyn Weiner

L1992-6.2



37.

Pablo Picasso, Spanish, 1881-1973

Grande Vase aux Danseurs (Grand Vase with Dancers), 1950

glazed red ceramic, partially painted in white engobe, edition of 25

Overall: 28 × 13 in. (71.1 × 33 cm)

Collection of Gwendolyn Weiner

L1995-3.2



38.

Amedeo Modigliani, Italian, 1884-1920

Head, 1910-1911

stone

20-5/8 x 9-3/4 x 14-3/4 inches

Collection of Gwendolyn Weiner

L1995-3.3



39.

Roger Noel Francois de la Fresnaye, French, 1885-1925

Marie Ressort avec ses Vaches, la Bergère, 1913

oil on canvas

78 1/2 x 63 3/4 inches

Collection of Gwendolyn Weiner

L1995-3.5



40.

Rufino Tamayo, Mexican, 1899-1991

Le Volcan, 1958

oil on canvas

Frame: 38 1/4 × 57 1/2 in. (97.2 × 146.1 cm)

Collection of Gwendolyn Weiner

L1995-3.6



41.

Andrew Wyeth, American, 1917-2009

Afternoon Light

watercolor on paper

17-1/4 x 21-1/2 inches

Collection of Gwendolyn Weiner

L1995-3.7



42.

Fernando Botero, Colombian, born 1932

Ultimo Retrato de los Arnolfini (after Van Eyck), c. 1956

oil on canvas

overall: 20 1/2 × 23 3/4 in. (52.1 × 60.3 cm)

Collection of Gwendolyn Weiner

L1995-3.8



43.

Jacques Lipchitz, French, born Lithuania, 1891-1976

Draped Woman (Femme drapée), 1919

bronze, edition 4/7

36 1/2 x 12 1/4 x 12 1/4 inches

Collection of Gwendolyn Weiner

L2007-15.2



44.

Henry Moore, British, 1898-1986

Three Points, 1939-1940

bronze, from an edition of 10

Overall: 5 3/4 x 7 1/4 x 3 7/8 in. (14.6 x 18.4 x 9.8 cm)

Collection of Gwendolyn Weiner

L2007-15.3



45.

Reg Butler, British, 1913-1981

Manipulator, 1954

shell bronze, edition of six

67 x 23 1/2 x 19 inches

Collection of Gwendolyn Weiner

L2007-15.4



46.

William Turnbull, American, born Scotland, 1922

Oedipus, 1962

bronze, rosewood and stone

65 1/2 x 16 1/4 inches diameter

Collection of Gwendolyn Weiner

L2007-15.5



47.

Edgar Degas, French, 1834-1917

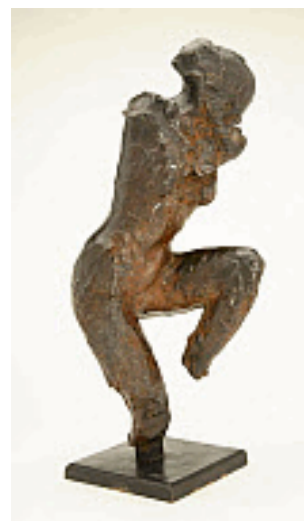
Woman Getting Out of Bath (Femme sortant du bain), 1896-1911

bronze

16 5/8 x 6 15/16 x 8 1/16 inches

Collection of Gwendolyn Weiner

L2007-15.6



48.

Gerhard Marcks, German, 1889-1981

Woman of Herero Tribe, 1955

cast bronze, edition I

44 1/4 x 12 1/8 x 12 1/4 inches

Collection of Gwendolyn Weiner

L2007-15.7



49.

Jacques Lipchitz, French, born Lithuania, 1891-1973

Sacrifice III, 1949-1957

bronze, edition 2/7

63 1/2 x 40 x 32 inches

Collection of Gwendolyn Weiner

L2008-10



50.

Georges Rouault, French, 1871-1958

“Jésus sera en agonie jusqu’ a la fin du monde...” (“Jesus Will Be in Agony until the End of the World...”) Pl. XXXV of Miserere, 1922-1948

Etching and aquatint on paper

Image: 22 7/8 × 16 1/4 in. (58.1 × 41.3 cm)

Collection of Gwendolyn Weiner

L2009-59.35



51.

Georges Rouault, French, 1871-1958

“Debout les morts!” (“Arise, You Dead”) Pl. LIV of Miserere, 1922-1948

Etching and aquatint on paper

Image: 23 1/4 × 17 1/2 in. (59.1 × 44.5 cm)

Collection of Gwendolyn Weiner

L2009-59.54



52.

Günther Uecker, German, born 1930

Light Disc, 1960

painted nails on burlap over wood

57 inches diameter

Collection of Gwendolyn Weiner

L2011-9



53.

Aristide Maillol, French, 1861-1944

Reclining Figure, 1910

bronze

8 x 11 x 6 inches

Collection of Gwendolyn Weiner

L2012-17.1



54.

Eugenio Pellini, Italian, 1869 - 1934

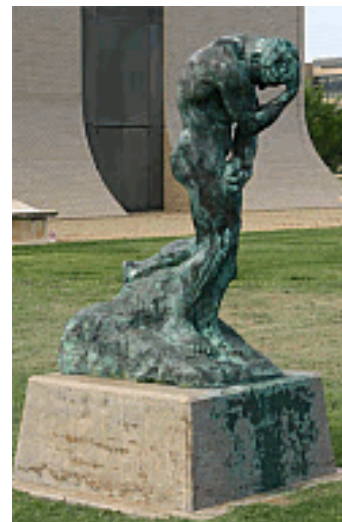
Judas, 1959

bronze

70 x 24 x 44 inches

Collection of Gwendolyn Weiner

L2012-17.2



55.

Alicia Penalba, Argentinean, active France, 1913-1982

Hommage à César Vallejo, 1957

bronze, ed. 2/4

106 x 12 x 19 inches

Collection of Gwendolyn Weiner

L2012-17.3



56.

Jack Zajac, American, born 1929

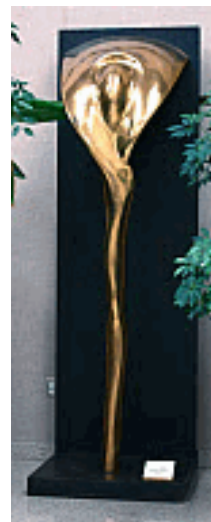
Falling Water II, c. 1962

bronze and wood

101 x 34 x 33 inches

Collection of Gwendolyn Weiner

L2012-17.4



57.

Pablo Picasso, Spanish, 1881-1973

Angry Owl (La chouette en colère or Owl with Raised Wings),
1951-1953

bronze, edition of 6

12 3/4 x 12 1/4 x 12 5/8 inches

Collection of Gwendolyn Weiner

L2014.1



58.

Giacomo Manzù, Italian, 1908 - 1991

Cardinal, 1965

bronze

overall: 36 1/2 × 11 1/4 × 7 in. (92.7 × 28.6 × 17.8 cm)

Collection of Gwendolyn Weiner

L2014.52.1



59.

Eros Pellini

Girl Holding her Foot (Ragazza che si prende il piede), 1955

bronze

overall: 12 3/4 × 7 3/4 × 6 in. (32.4 × 19.7 × 15.2 cm)

Collection of Gwendolyn Weiner

L2014.52.2



60.

Eduardo Paolozzi

Chinese Dog, 1956

bronze

overall: 36 3/8 × 25 1/4 in. (92.4 × 64.1 cm)

Collection of Gwendolyn Weiner

L2014.52.5



61.

Victor Pasmore, British, 1908 - 1998

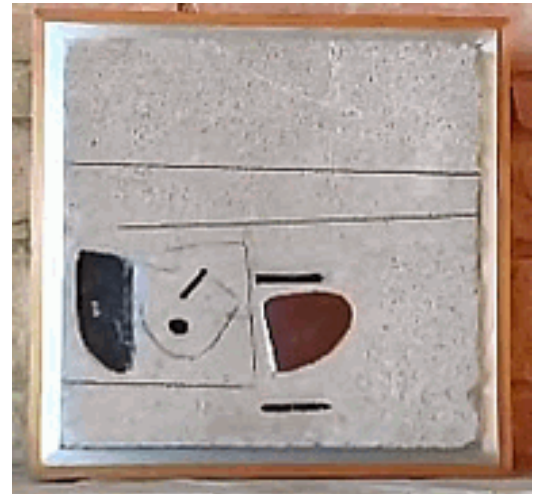
Abstraction [provisional title]

oil and engraving on plaster

Overall: 11 5/8 × 11 13/16 in. (29.5 × 30 cm)

Collection of Gwendolyn Weiner

L2015.19.1



62.

Georg Kolbe, German, 1877 - 1947

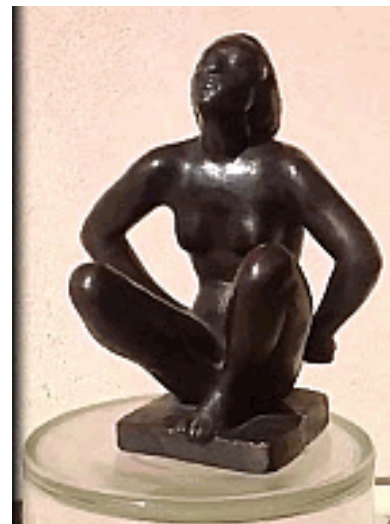
Crouching Nude (Kauernde), 1917

bronze, 5 of 8

Overall: 9 1/8 × 7 1/4 × 5 3/8 in. (23.2 × 18.4 × 13.7 cm)

Collection of Gwendolyn Weiner

L2015.19.2



63.

Henri Laurens, French, 1885 - 1954

Les Ondines (Water Nymphs), 1934

bronze, edition 2/6

overall: 29 1/4 × 61 1/2 × 18 in. (74.3 × 156.2 × 45.7 cm)

Collection of Gwendolyn Weiner

L2015.20

