

## Palm Springs Art Museum

1.

Charles G. Shaw  
American, 1892-1974  
Riddle of Tomorrow, 1956

oil on canvas

30 x 38 inches

Gift of the Estate of Lionel R. Bauman

14-2000



2.

Russell Cowles  
American, 1887-1979  
Enchanted World, ca. 1940

oil on canvas

40 x 50-1/4 inches

Gift of the Dalzell Hatfield Galleries

20-1969



3.

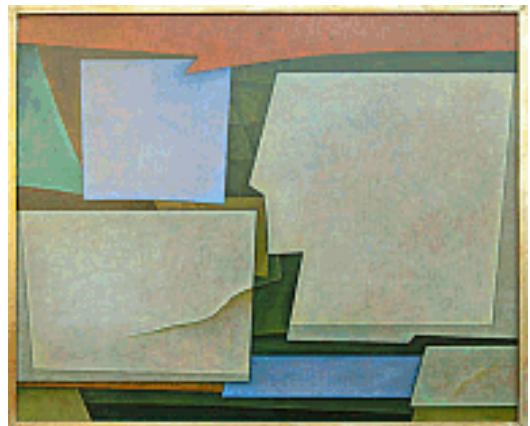
Gunther Gerzso  
Mexican, 1915-2000  
Tres Formas: Ancient Forms, 1964

oil on Masonite

23 1/2 x 28 7/8 inches

Gift of Mr. and Mrs. Jennings Lang

22-1972



4.

Louise Nevelson  
American, born Russia, 1899-1988  
Untitled, 1976

painted wood construction  
29 x 10-3/4 x 9-3/4 inches (with base)

Gift of Albert A. Robin and Family

130-2005



5.

Richard Stankiewicz  
American, 1922-1983  
Untitled Relief, 1963

steel  
27 x 28 x 12.5 in.

75th Anniversary gift of Marilyn Pearl Loesberg

2014.168



6.

Melvin Schuler  
American, born 1924  
Caged Form, 1968

black walnut and steel  
71-1/4 x 40 x 26-1/2 inches

Collection of Gwendolyn Weiner

L1980-3.26



7.

Claude Venard  
French, 1913-1999  
Untitled (Musique), n.d.

oil on canvas

39 1/4 x 25 3/4 inches

Collection of Gwendolyn Weiner

L1980-3.30



8.

Peter Voulkos  
American, 1924-2002  
Pottery #1 (Double-neck Vase), 1958

stoneware with white slip painted with color slips

overall: 19 1/2 x 9 1/2 x 9 1/4 in. (49.5 x 24.1 x 23.5 cm)

Collection of Gwendolyn Weiner

L1982-9



9.

Reg Butler  
British, 1913-1981  
Manipulator, 1953-1954

bronze, edition of six

67 x 23 1/2 x 19 inches

Collection of Gwendolyn Weiner

L2007-15.4

