

Palm Springs Art Museum

1.

Agnes Pelton
American, born Germany, 1881-1961
Between Storms, Edom Hill, 1937

oil on canvas
14 x 20 inches

Museum purchase with funds provided by the General Acquisition
Fund for Western Art

2-1995



2.

John W. Hilton
American, 1904-1983
A Touch of Spring - Indio Mountain, 1949

oil on canvas
30 x 40 inches

Gift from the Christiansen Collection of 20th Century California Art

2-2005



3.

Edward S. Curtis
American, 1868-1952
Marcos - Palm Cañon Cahuilla (Plate 517) (from The North American
Indian, volume XV), 1924

photogravure on tissue
11-1/2 x 15-1/2 inches

Museum purchase with funds provided by the William Holden
Acquisition Fund

4-1985.10



4.

Edward S. Curtis
American, 1868-1952

Numero - Desert Cahuilla (Plate 519) (from The North American Indian, volume XV), 1924

photogravure on tissue

11-1/2 x 15-1/2 inches

Museum purchase with funds provided by the William Holden Acquisition Fund

4-1985.12



5.

Edward S. Curtis
American, 1868-1952

A Desert Cahuilla Woman (Plate 522) (from The North American Indian, volume XV), 1924

photogravure on tissue

11-1/2 x 15-1/2 inches

Museum purchase with funds provided by the William Holden Acquisition Fund

4-1985.15



6.

Edward S. Curtis
American, 1868-1952

A desert Cahuilla female type. Facing page 122 (from The North American Indian, volume XV), 1926

photogravure on tissue

5-1/2 x 7-3/8 inches

Museum purchase with funds provided by the William Holden Acquisition Fund

4-1985.94



7.

Edward S. Curtis
American, 1868-1952

A man of Palm Springs (Cahuilla). Facing page 126 (from The North American Indian, volume XV), 1926

photogravure on tissue

5-1/2 x 7-3/8 inches

Museum purchase with funds provided by the William Holden Acquisition Fund

4-1985.96



8.

Edward S. Curtis
American, 1868-1952

A woman of Palm Springs (Cahuilla). Facing page 128 (from The North American Indian, volume XV), 1926

photogravure on tissue

5-1/2 x 7-3/8 inches

Museum purchase with funds provided by the William Holden Acquisition Fund

4-1985.97



9.

John W. Hilton
American, 1904-1983
Enchantment of Sunrise, 1960

oil on masonite

image: 20 x 30 in. (50.8 x 76.2 cm)

frame: 27 3/4 x 37 3/4 in. (70.5 x 95.9 cm)

Gift from the Christiansen Collection of 20th Century California Art

4-2005



10.

Romeo Reyna
American, born 1935
Untitled, n.d.

wool, natural fibres, horse hair, goat hair, camel hair

108 x 123 inches

Gift of Reyna Romeo in memory of Arthur Elrod and William Raiser

5-1976



11.

Bill Bender
American, born 1919
Beckoning Desert, 1960-1961

ink on paper

14 x 11 inches

Gift of Mr. and Mrs. Walter Geisen

9-2000.1



12.

Bill Bender
American, born 1919
Drawing for Section Three, 1960-1961

ink on paper

14 x 11 inches

Gift of Mr. and Mrs. Walter Geisen

9-2000.3



13.

Bill Bender

American, born 1919

Chapter XXVII: Mrs. Coffman At Last Was Able To Build Her Dream Inn, 1962

ink on paper

14 x 11 inches

Gift of Mr. and Mrs. Walter Geisen

9-2000.20



14.

Bill Bender

American, born 1919

Chapter XXVIII: The Signposts... Were So Thick It Almost Made Me Dizzy, 1962

ink on paper

14 x 11 inches

Gift of Mr. and Mrs. Walter Geisen

9-2000.21



15.

Bill Bender

American, born 1919

Chapter XXX: Russell Nicoll Opened A Little Date Shop And Named It For His Daughter, 1962

ink on paper

14 x 11 inches

Gift of Mr. and Mrs. Walter Geisen

9-2000.22



16.

Helen Pashgian
American, born 1934
Untitled (Copper), 2006

acrylic, copper and cast epoxy

60 x 34 1/4 x 4 1/2 inches

Museum purchase with funds provided by the Contemporary Art
Council, 2007

9-2007



17.

Loretta Ayeroff
American, born 1949
Pool with Silver Hand Rail and Cactus, Palmer Lodge, The Motel
Series, 1981

color Kodachrome photograph, Type R print

11 x 14 inches

Gift of the Artist

13-2002.1



18.

Loretta Ayeroff
American, born 1946
Desert Hot Springs, Palmer Lodge: Recreation Room, Sunset Painting
and Tables (from the portfolio Motel Series, Desert Hot Springs, CA,
1981-1986), 1982
color Kodachrome photograph, Type R print

11 x 14 inches

Gift of the Artist

13-2002.2



19.

Loretta Ayeroff
American, born 1946

Desert Hot Springs, Motel: Black and White Exterior with Sky (from the portfolio Motel Series, Desert Hot Springs, CA, 1981-1986), 1985

color Kodachrome photograph, Type R print

11 x 14 inches

Gift of the Artist



13-2002.6

20.

Loretta Ayeroff
American, born 1946

Desert Hot Springs, Gunter's Chalet: White Statue and Silver Hand Rail (from the portfolio Motel Series, Desert Hot Springs, CA, 1981-1986), 1982

color Kodachrome photograph, Type R print

11 x 14 inches

Gift of the Artist



13-2002.7

21.

Loretta Ayeroff
American, born 1946

Desert Hot Springs, Palmer Lodge: Mineral Pool with Three Chairs, Door Open (from the portfolio Motel Series, Desert Hot Springs, CA, 1981-1986), 1981

color Kodachrome photograph, Type R print

11 x 14 inches

Gift of the Artist



13-2002.9

22.

Loretta Ayeroff
American, born 1946

Desert Hot Springs, Ambassador Arms: Green Diamond Pattern Wall
(from the portfolio Motel Series, Desert Hot Springs, CA, 1981-1986),
1984
color Kodachrome photograph, Type R print

11 x 14 inches

Gift of the Artist

13-2002.10



23.

Carl Eytel
American, born Germany, 1862-1925
Merry Christmas, 1912

ink on artist card stock

Gift of Mr. Edmund C. Jaeger

14-1985.45



24.

Carl Eytel
American, born Germany, 1862-1925
Frank old Partner..., 1920

ink on artist card stock

Gift of Mr. Edmund C. Jaeger

14-1985.685



25.

Carl Eytel
American, born Germany, 1862-1925
In Andreas Canon, 1917

ink on card stock
5 1/2 x 3 1/8 inches

Gift of Mr. Edmund C. Jaeger

14-1985.894



26.

Carl Eytel
American, born Germany, 1862-1925
Untitled (Canyon with Palms), n.d.

graphite and inkwash on paper
5 1/2 x 3 1/8 inches

Gift of Mr. Edmund C. Jaeger

14-1985.895



27.

DeWain Valentine
American, born 1936
Vertical Section, 1979

laminated glass
96 x 144 x 12 inches

Gift of Mr. and Mrs. David Ruttenberg and Mr. Russell Novak

17-1993 a-h



28.

Edward Biberman
American, 1904-1986
Palm Canyon (Lyric Landscape), 1968

oil on masonite
36-1/8 x 48 inches

Gift of the Estate of Genevieve U. Gilmore; courtesy of Mrs. Martha Parfet, Mrs. Carol Boudeman and Mrs. Jane Vojnovich

18-1991



29.

James Swinnerton
American, 1875-1974
After the Storm, n.d.

oil on canvas, mounted on Masonite
40-3/8 x 50-1/4 inches

Gift of Mr. and Mrs. J. Swinnerton

21-1969



30.

Carl Eytel
American, born Germany, 1862-1925
Evening Desert Scene, before 1925

oil on canvas
12 x 22-3/8 inches

Gift of Mr. and Mrs. Walter M. Geisen

21-1989



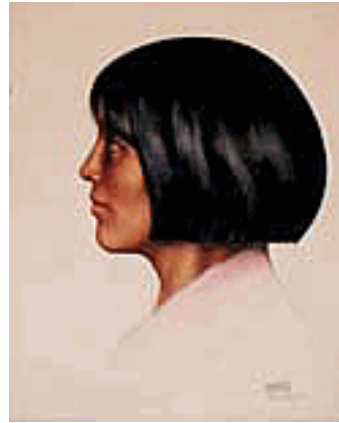
31.

Leo Katz
American, 1887-1982
Portrait, 1934

watercolor
26-3/4 x 22 x 1-1/2 inches

Gift of Mr. and Mrs. Frank H. Bennett

27-1968



32.

Julius Shulman, American, 1910-2009
William F. Cody, American, 1916-1978
Spa Hotel, Palm Springs, California, n.d.

color digital lightjet print
20 x 16 inches

Museum purchase

29-2007.69



33.

Julius Shulman, American, 1910-2009
Donald Wexler, American, 1926-2015
Spa Bathhouse, Palm Springs, California, n.d.

color digital lightjet print
24 x 20 inches

Museum purchase

29-2007.70



34.

Julius Shulman

American, 1910-2009

Spa Hotel Bathhouse Entrance, 1960

color digital lightjet print

confirm

Museum purchase

29-2007.111



35.

Agnes Pelton

American, born Germany, 1881-1961

Smoke Trees in a Draw, ca. 1950

oil on canvas

25 x 31 1/2 inches

Museum purchase with funds provided by the Western Art Council,
Mary James Memorial Fund, 2008

31-2008



36.

Llyn Foulkes

American, born 1934

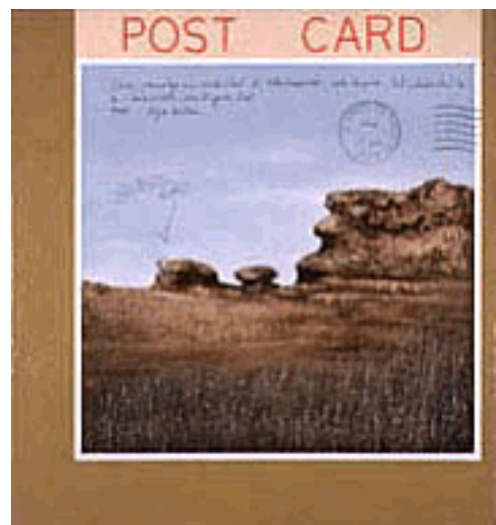
Post Card from Chatsworth, 1984

oil and acrylic on wood

61 x 57-1/8 inches

Gift of Lolita Sapriel Metscher and Joseph G. Metscher

42-1998



37.

Lockwood De Forest
American, 1850-1932
Indio, 1911

oil on artist card stock

9 3/4 x 14 inches

Gift of Lisa de Forest through Sullivan Goss--An American Gallery

42-2010



38.

Lockwood De Forest
American, 1850-1932
Mount San Jacinto from near Palm Springs, 1912

oil on artist card stock

9 3/4 x 14 inches

Gift of Lisa de Forest through Sullivan Goss--An American Gallery

43-2010



39.

James Swinnerton
American, 1875-1974
The Desert Homestead, n.d.

oil on canvas

36 x 40 inches

Gift of Mrs. James Swinnerton

44-1975



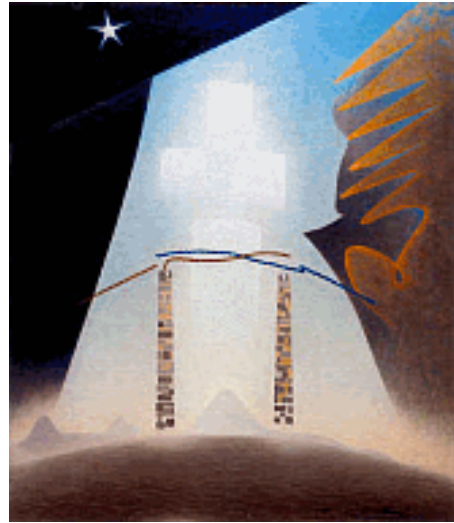
40.

Agnes Pelton
American, born Germany, 1881-1961
Future, 1941

oil on canvas
30 x 26 inches

75th Anniversary gift of Gerald E. Buck in memory of Bente Buck, Best
Friend and Life Companion

60-2013



41.

Frederick Eversley
American, born 1941
Untitled (Black), 1978

cast polyester resin
7 inches deep x 19-3/8 inches diameter

Gift of the Estate of Eugene V. Klein

61-1992



42.

James Swinnerton
American, 1875-1974
Monument Valley, 1922

oil on canvas
30-1/4 x 40-1/4 inches

Gift of Mr. and Mrs. Fred Penney

88-1980



43.

John Anthony Conner
American, 1892-1971
Dawn at Palm Springs, ca. 1935

oil on canvas

23-1/8 x 27-1/8 inches (frame)

Gift of John and Soma Stickler in honor of their parents Joseph H.
Stickler, M.D. and Virginia Cobb, M.D.

119-2005



44.

Vija Celmins
American, born Latvia, 1939
Untitled (Desert), 1971

lithograph, artist's proof, edition of 65

22-1/2 x 29 inches

Gift of Ed Moses

142-1994



45.

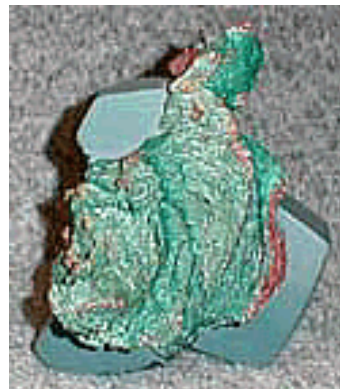
Kenneth Price
American, 1935-2012
Untitled (Rock Series), c. 1980-1983

glazed ceramic

Overall: 4 1/2 x 6 x 4 in. (11.4 x 15.2 x 10.2 cm)

Gift of Ed Moses

144-1994.1



46.

Kenneth Price
American, 1935-2012
Untitled (Rock Series), c. 1980-1983

glazed ceramic

Overall: 4 1/2 x 4 x 3 in. (11.4 x 10.2 x 7.6 cm)

Gift of Ed Moses

144-1994.2



47.

Salomón Huerta
American, born Mexico, 1965
Untitled Head, 2001

graphite on paper

15 x 11 inches

75th Anniversary gift of Marlene G. Baumgarten

2014.54



48.

James Swinnerton
American, 1875-1974
Untitled (Desert Landscape with Smoke Tree in a Wash), ca. 1935

oil on canvas

Image: 27 1/2 x 33 1/2 in. (69.9 x 85.1 cm)

Frame: 35 1/4 x 41 1/4 x 1 3/4 in. (89.5 x 104.8 x 4.4 cm)

Canvas: 27 1/2 x 33 1/2 in. (69.9 x 85.1 cm)

Gift of Scott Williams and Kimberly Williams in memory of their father,
Robert T. Williams

2014.77



49.

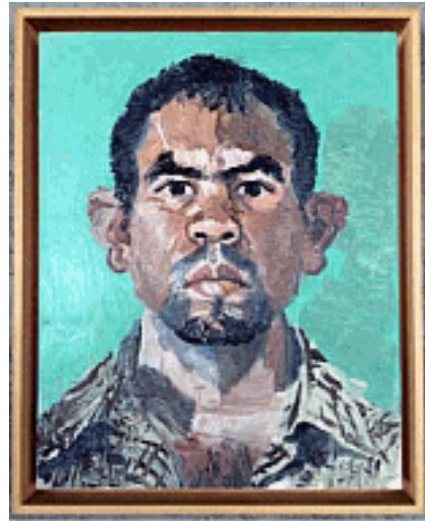
John Sonsini
American, born 1950
Gabriel, 2003

oil on canvas

canvas: 20 × 16 in. (50.8 × 40.6 cm)

Gift of Michael Maloney

2015.46



50.

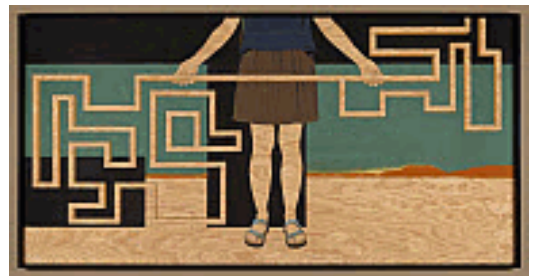
Andrea Zittel
American, born 1965
Prototype For Billboard at A-Z West: Body in Space with Object #3,
2011

AC plywood, polyurethane, matte acrylic paint

Image: 48 × 96 in. (121.9 × 243.8 cm)

Museum purchase with funds derived from a previous gift from Mr.
and Mrs. Samuel H. Maslon

2017.8



51.

Jessie Homer French
American, born 1940
The Salton Sea, 2016

fabric, thread, fabric paint, and hardware

Object: 51 × 40 in. (129.5 × 101.6 cm)

Museum purchase with funds provided by Robert Shiell

2017.32



52.

Eva Slater

American, born Germany, 1922-2011

San Jacinto Mountains, 1960

oil on Masonite

Frame: 24 × 60 in. (61 × 152.4 cm)

Museum purchase with funds provided by the Western Art Council,
2018

2018.5.1



53.

Gerald Clarke, Jr.

Cahuilla, born 1967

Continuum Basket: Pivat (Tobacco), 2018

aluminum beer and soda cans mounted on a satellite dish

Object: 92 × 92 × 18 in. (233.7 × 233.7 × 45.7 cm)

Museum purchase with funds provided by Loren G. Lipson, M.D.

2018.7



54.

Cahuilla

Cooking or Storage Vessel, ca. 1890

clay

5-3/4 x 6-3/4 inches

Gift of Randall Henderson

A1-1986



55.

Cahuilla

Personal Storage or Gift Basket, 1927

natural and dyed juncus on a deer grass bundle foundation

2-1/4 x 5-1/2 inches

Gift of Mr. and Mrs. Ira C. Caswell

A1-1990.1



56.

Apache

Tray, ca. 1920

willow and devil's claw on a willow foundation

4 x 14-3/4 inches

Gift of Lawrence S. and Jean Meyran

A1-2003



57.

Cahuilla

Hat, ca. 1900

sumac and dyed juncus on a deer grass bundle foundation

6 5/8 x 7 7/8 inches

Gift of James H. Kelley

A2-1982.11



58.

Cahuilla

Olla, ca. 1890

clay

11-1/2 x 11-1/2 inches

Gift of Mrs. J. Smeaton Chase

A2-1986



59.

Maria Martinez

San Ildefonso, 1887 - 1980

San Ildefonso Black-on-Black Bowl, ca. 1925

matte-on-polished-blackware

3-1/4 x 6 inches

Gift of Jane Lykken Hoff

A2-2010



60.

Cahuilla

Rabbit Skin Blanket, 1880-1900

rabbit skin, fur and cotton

Collection of Palm Springs Art Museum

A5-1988



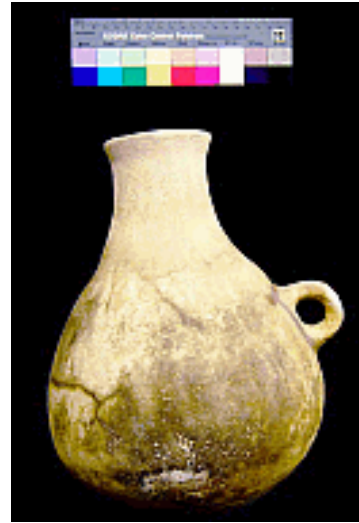
61.

Tony Soares
American, born 1969
Olla, 1999

clay
10 x 8 inches

Museum purchase

A5-2004.1



62.

Tony Soares
American, born 1969
Olla, 1999

clay
18-1/2 x 15-1/2 inches

Museum purchase

A5-2004.3



63.

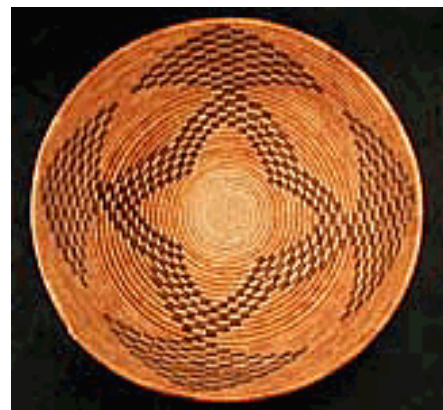
Agua Caliente Cahuilla

Tray, ca. 1926

sumac, natural and dyed juncus on a deer grass bundle foundation
2-3/4 x 12 inches

Gift of Jack Wentworth

A9-1986.3



64.

Bertha Williams

Achumawi/Atsugewi, born ca. 1851

Twined Basket with Design of Warner Mountain Range, near Jess Valley, California, 1873

black maiden fern, willow bark and bear grass

Object: 5 1/4 × 8 1/2 in. (13.3 × 21.6 cm)

Gift of Sir John P. Porter Trust

A10-2005



65.

Mission

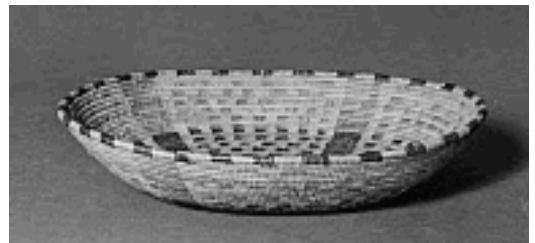
Basket, ca. 1900

sumac, natural and dyed juncus on a deer grass bundle foundation

2-1/4 x 13 inches

Gift of Mrs. Marie Davenport Waymire

A11-1973.5



66.

Cahuilla

Pottery Paddle, n.d.

wood, pigment

13 1/8 x 4 x 5/8 inches

Collection Palm Springs Art Museum

A11-1985



67.

Prehistoric Arizona

Bowl with Design, n.d.

earthenware, coiled with burnished interior

object: 3 × 5 1/4 × 5 1/4 in. (7.6 × 13.3 × 13.3 cm)

Bequest of Lura Gard Newhouse Family Trust

A12-2013



68.

Panamint

Flaring Bowl, ca. 1900

willow, devil's claw, yucca root on a three-rod peeled willow foundation

5 3/8 x 11 diameter inches

Gift of Winifred Little from the F. A. Little Collection

A13-1972.3



69.

Panamint

Flaring Bowl, ca. 1900

willow, yucca root and dyed bullrush on a three-rod willow foundation

3 1/2 x 7 7/8 diameter inches

Gift of Winifred Little from the F. A. Little Collection

A13-1972.24



70.

Panamint

Basket, oval form, ca. 1900

willow, devil's claw on a three-rod willow foundation

4 x 6 5/8 x 7 3/4 inches

Gift of Winifred Little from the F. A. Little Collection

A13-1972.25



71.

Panamint

Basket, olla, ca. 1900

willow, devil's claw and yucca root on a three-rod peeled willow foundation

4 1/8 x 6 1/4 diameter inches

Gift of Winifred Little from the F. A. Little Collection

A13-1972.58



72.

Paiute

Flat-bottomed water bottle, ca. 1900

spring peeled willow; pinyon pine pitch

7 7/8 x 8 diameter inches

Gift of Winifred Little from the F. A. Little Collection

A13-1972.119



73.

Northern Paiute

Water bottle, pointed base, ca. 1900

willow stitching and foundation covered in pinyon pine pitch with fiber handle
11-1/2 x 6 inches

Gift of Winifred Little from the F. A. Little Collection

A13-1972.121



74.

Paiute

Water Bottle, ca. 1900

willow and pitch
14 1/2 x 9 5/8 diameter inches

Gift of Winifred Little from the F. A. Little Collection

A13-1972.124



75.

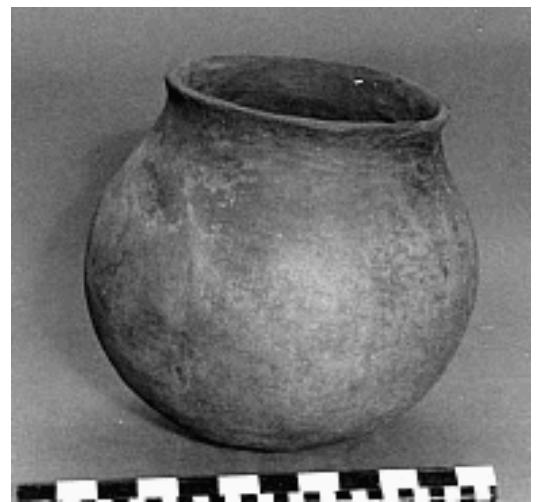
Diegueno

Cooking or Storage Vessel, ca. 1890

clay
10 5/8 x 11 3/4 inches

Gift of Winifred Little from the F. A. Little Collection

A13-1972.155



76.

Kumeyaay (Diegueno or Tipai-Ipai)

Storage Vessel, ca. 1890

clay

12-1/4 x 10-5/8 inches

Gift of Winifred Little from the F. A. Little Collection

A13-1972.156



77.

Kumeyaay (Diegueno or Tipai-Ipai)

Olla, ca. 1890

clay

8-5/8 x 7-1/2 inches

Gift of Winifred Little from the F. A. Little Collection

A13-1972.157



78.

Kumeyaay (Diegueno or Tipai-Ipai)

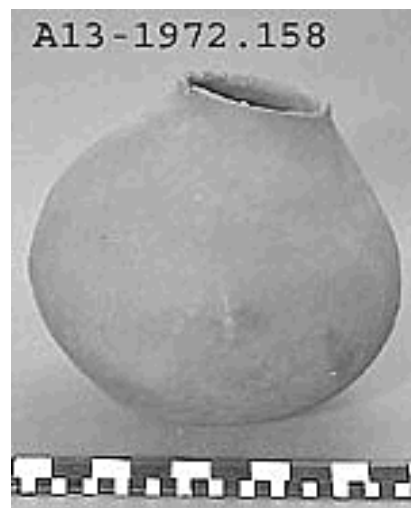
Storage Vessel, ca. 1890

clay

10-5/8 x 10-1/4 inches

Gift of Winifred Little from the F. A. Little Collection

A13-1972.158



79.
Prehistoric Arizona

Jar, ca. 1300

slipped, coiled, and pinched black and red earthenware
object: 4 1/2 × 5 × 5 in. (11.4 × 12.7 × 12.7 cm)

Bequest of Lura Gard Newhouse Family Trust

A18-2013



80.
Effie Garcia
Santa Clara Pueblo
Bowl with Incised Design, ca. 1970

black on black earthenware
object: 2 3/4 × 5 1/4 × 5 1/4 in. (7 × 13.3 × 13.3 cm)

Bequest of Lura Gard Newhouse Family Trust

A22-2013



81.
Mission

Basket, n.d.

sumac and dyed juncus on a deer grass bundle foundation
13-1/2 x 47 inches

Gift of Mr. C. Fredrick Faude

A36-1973.80



82.

Cahuilla

Bowl, ca. 1900

sumac, natural and dyed juncus on deer grass foundation

12 x 22 inches

Gift of Mr. C. Fredrick Faude

A36-1973.150



83.

Cahuilla; Luiseño

Basket, ca. 1900

sumac, natural and dyed juncus on a deer grass bundle foundation

4-3/4 x 15-1/8 inches

Gift of Mr. C. Fredrick Faude

A36-1973.165



84.

Cahuilla

Olla, ca. 1890

red clay

18-1/2 x 15-3/4 inches

Gift of Nina Paul Shumway

A54-1975



85.

Cahuilla

Olla, ca. 1890

red clay

18-1/2 x 15-3/4 inches

Collection of Palm Springs Art Museum

A55-1975



86.

Cahuilla

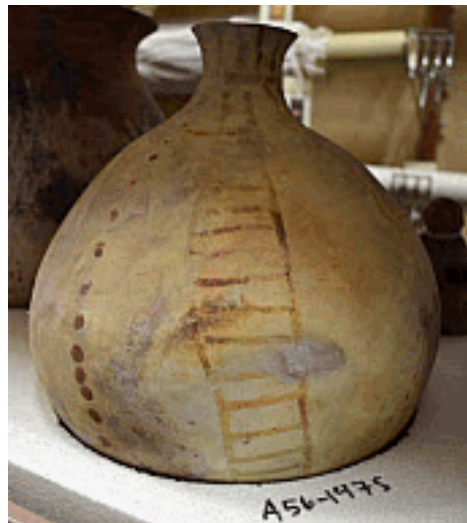
Olla, ca. 1890

clay

13-3/8 x 12-1/2 inches

Collection of Palm Springs Art Museum

A56-1975



87.

Mojave

Water Jar with Abstract Designs, ca. 1900

clay

Object: 14 9/16 x 12 5/8 in. (37 x 32 cm)

Gift of Carl Lykken

A59-1975



88.

Asphaltum

Asphaltum (bitumen) and wood



Unknown

A61-1985

89.

Cahuilla

Olla, ca. 1890

clay

14-1/8 x 11-3/4 inches

Gift of Helen Cooke

A68-1975



90.

Cahuilla

Olla, ca. 1890

clay

16-1/2 x 15-3/4 inches

Collection of Palm Springs Art Museum

A88-1975



91.

Dona Tortes
Cahuilla, Santa Rosa Reservation
Tray with Bat Designs, 1901-1925

sumac, natural and dyed juncus on a deer grass bundle foundation
3 x 12-1/2 inches

Gift of Cornelia B. White from the Marjorie Rose Dougan Collection

A104-1974



92.

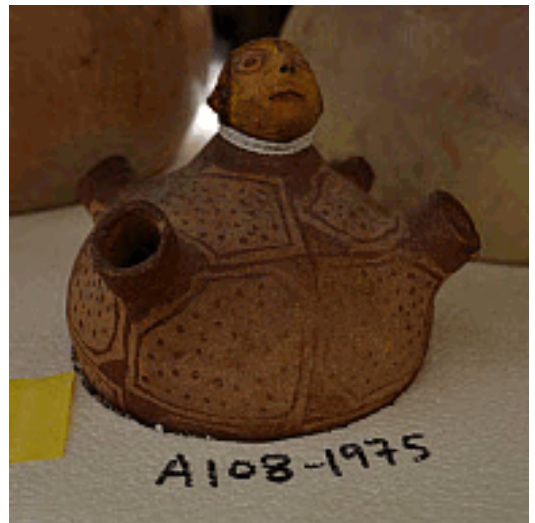
Mojave

Effigy Vessel with Human Head, ca. 1925

clay, red slip, traces of yellow paint, glass beads

Object: 7 1/16 x 7 1/2 in. (18 x 19 cm)

A108-1975



93.

Cahuilla

Olla, ca. 1890

clay

16-1/4 x 14-1/4 inches

Collection of Palm Springs Art Museum

A111-1975



94.

Maria; Martinez Martinez
San Ildefonso, ca. 1886-1980 (Maria); 1879-1943 (Julian)
San Ildefonso Black-on-Black Plate with Feather Design, ca. 1930

matte-on-polished-blackware

2 1/4 x 12 3/4 inches

Gift of Mrs. J. W. McCormick

A116-1975



95.

Guadalupe Arenas
Cahuilla, Santa Rosa Reservation, 1880 - 1958
Bowl with Rattlesnake Design, 1901-1925

sumac, natural and dyed juncus on a deer grass bundle foundation

2 x 6-1/4 inches

Collection of Palm Springs Art Museum

A123-1974



96.

Cahuilla

Personal Storage or Gift Basket, ca. 1900

split sumac, natural and dyed juncus on a deer grass bundle
foundation
2-3/4 x 4-1/2 inches

Gift of Edwin D. Walker

A139-1974



97.

Katie Johnson
Paiute, ca. 1873 - 1936
Bottleneck Basket, 1900-1925

dyed juncus (tan and black), round split sumac, on a three-rod willow
foundation
6 x 7 diameter inches

Gift of Mary Beal

A164-1974



98.

Hopi
Polychrome Ceramic Jar (Sityatki Revival Style), ca. 1900

ceramic
6-1/8 x 11 inches

Gift of Harry James

A167-1975



99.

Unknown
Shovel, n.d.

wood
3-1/4 x 27-1/4 x 9 inches

Gift of Nina Paul Shumway

A176-1975



100.

Cahuilla

Awl, n.d.

bone

6 1/2 x 1 3/8 x 3/4 inches

Collection Palm Springs Art Museum

A182-1975



101.

Cahuilla

Arrow Shaft Straightener, n.d.

stone

7/8 x 4 3/8 x 1 7/8 inches

Gift of Edna Coffman

A183-1975



102.

Cahuilla

Arrow Shaft Straightener, n.d.

stone

5/8 x 2 7/8 x 1 7/8 inches

Gift of Nina Shumway

A201-1975



103.

Anasazi

Anasazi Bowl, 1100-1300

black-on-white glazed ceramic

4 1/4 x 9 inches diameter

Collection of Palm Springs Art Museum

A218-1975



104.

Katie Johnson

Paiute, ca. 1873 - 1936

Miniature Bowl, 1900-1925

willow, devil's claw and juncus on a three-rod willow foundation

2 3/4 x 4 1/8 diameter inches

Gift of Mary Beal

A229-1974



105.

Katie Johnson

Paiute, ca. 1873 - 1936

Bottleneck Basket, 1900-1925

natural and dyed juncus, sumac, deer grass

6 1/8 x 7 1/16 inches

Gift of Mary Beal

A233-1974



106.

Unknown

Pottery Anvil, n.d.

ceramic

Gift of Nina Paul Shumway



A263-1975

107.

Serrano; Mission

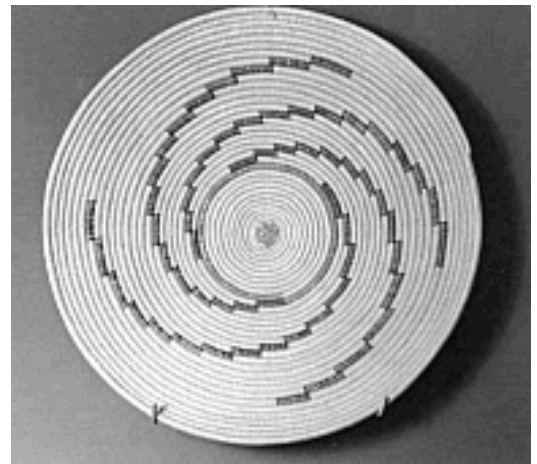
Basket Tray, n.d.

sumac, deer grass, juncus, yucca root, Joshua Tree root

2 x 15 1/2 inches

Collection of Palm Springs Art Museum

A443-1974



108.

Cahuilla

Basket, 1901-1925

sumac, natural and dyed juncus on a deer grass bundle foundation

2-1/2 x 11-3/4 inches

Gift of J. Smeaton Chase

A471-1974



109.

Cahuilla

Personal Storage or Gift Basket, ca. 1910

sumac, natural and dyed juncus on a deer grass bundle foundation

2-1/2 x 8 x 4-1/2 inches

Gift of Cornelia B. White

A490-1974



110.

Luisefño

Basket, n.d.

split pincas, sumac, deer grass

4-3/4 x 5-1/2 inches

Museum purchase from Patty Dyal

A500-1974



111.

Dolores Cassero Lubo

Cahuilla, 1840-1949

Rain Eagle Basket, 1901-1925

sumac, natural and dyed juncus on a deer grass bundle foundation

4 x 17-1/2 inches

Gift of Cornelia B. White from the Marjorie Rose Dougan Collection

A504-1974



112.

Dolores Cassero Lubo (attributed)

Cahuilla, 1840-1949

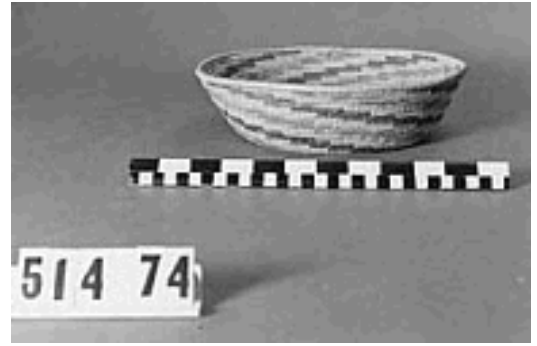
Shallow Bowl, 1901-1925

sumac, natural and dyed juncus on a deer grass bundle foundation

3 x 10-1/4 inches

Gift of Cornelia B. White from the Marjorie Rose Dougan Collection

A514-1974



113.

Katie Johnson

Paiute, ca. 1873 - 1936

Basket, 1900-1925

sumac, natural and dyed juncus on a deer grass bundle foundation

3 x 12 inches

Gift of Mary Beal

A554-1974



114.

Havasupai

Burden Basket, ca. 1910

natural and dyed willow, natural and dyed juncus and leather

13-1/4 x 16 inches

Museum purchase

A586-1974



115.

Cahuilla

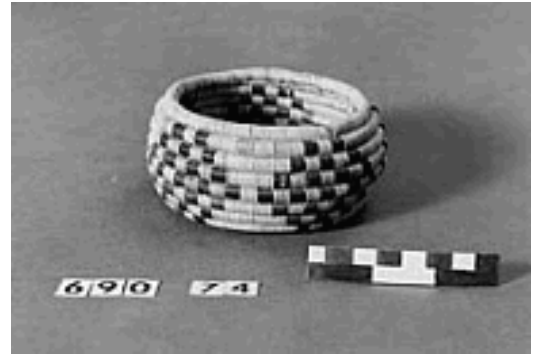
Basket, ca. 1910

natural and dyed juncus on a deer grass bundle foundation

2 x 4-1/4 inches

Collection of Palm Springs Art Museum

A690-1974



116.

Apache

Water Jar, before 1900

basket material with pitch, leather, and horsehair

10-5/8 x 7-7/8 diameter inches

Collection of Palm Springs Art Museum

A719-1974



117.

Cahuilla

Gift Tray, ca. 1910

sumac, natural and dyed juncus on a deer grass bundle foundation

2-1/2 x 12-1/4 inches

Collection of Palm Springs Art Museum

A721-1974



118.

Casas Grandes

Ramos Polychrome Vessel with Bird, ca. 1250-1660

polychrome ceramic

object: 7 1/2 × 7 in. (19.1 × 17.8 cm)

75th Anniversary museum purchase with funds provided by Loren G. Lipson, M.D.

A2014.2



119.

Casas Grandes

Ramos Polychrome Vessel, ca. 1250-1660

polychrome ceramic

object: 7 1/4 × 7 1/2 in. (18.4 × 19.1 cm)

75th Anniversary museum purchase with funds provided by Loren G. Lipson, M.D.

A2014.4



120.

Mary Corse

American, born 1945

Untitled, 2001

glass microspheres in acrylic on canvas

Overall: 24 × 53 1/2 in. (61 × 135.9 cm)

Promised gift of L.J. Cella

L2015.30



121.

James Swinnerton

Smoke Tree and Salton Sea, 1935

oil on canvas

Collection of Mary Ingebrand-Pohlad

L2018.15



122.

George Brandriff

American, 1890 - 1936

Palm Springs Indian Reservation, ca. 1920

oil on canvas

Object: 24 × 28 in. (61 × 71.1 cm)

Frame: 34 × 37 3/4 in. (86.4 × 95.9 cm)

Collection of Nadine and Robert Hall

L2018.17



123.

Stephen H. Willard

American, 1894-1966

Entrance, The Desert Inn, Palm Springs, California, ca. 1920-1930

color postcard

sheet: 5 5/8 × 3 5/8 in. (14.3 × 9.2 cm)

Gift of Jim De Grado

S2014.7.7



124.

Stephen H. Willard
American, 1894-1966
South Palm Springs from above the Desert Inn, ca. 1920-1930

color postcard

sheet: 5 5/8 × 3 5/8 in. (14.3 × 9.2 cm)

Gift of Jim De Grado

S2014.7.10



125.

Stephen H. Willard
American, 1894-1966
5 Wild Flowers on the Desert in the Shadow of Mt. San Jacinto, Near
Palm Springs, California, ca. 1920-1930

color postcard

sheet: 5 5/8 × 3 5/8 in. (14.3 × 9.2 cm)

Gift of Jim De Grado

S2014.7.12



126.

Cara Romero
American, Chemehuevi, born 1977
First American Girl Series: "Naomi", 2018

archival pigment print

Sheet: 44 × 52 in. (111.8 × 132.1 cm)

Frame: 52 3/4 × 45 5/8 × 1 3/8 in. (134 × 115.9 × 3.5 cm)

Gift of Loren G. Lipson, M.D.

T2018.11

