

LINES IN THE SAND

LAND

YOU ARE ON INDIAN LAND





Fig. 10
A group of five ancient pottery vessels, including three large rounded jars and two smaller ones, displayed on a white tray.



Fig. 11
A large, shallow, bowl-shaped pottery vessel with a dark, geometric pattern of interlocking lines.



Fig. 12
A small, shallow, bowl-shaped pottery vessel with a dark, floral or geometric pattern.



Fig. 13
A framed landscape painting of a desert scene with a large blue cholla cactus in the foreground and mountains in the background.



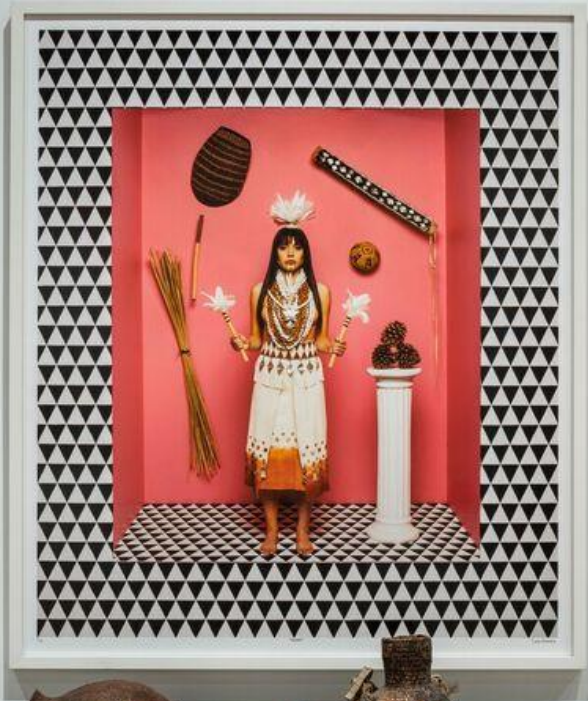








J.M.W. Turner
Rain, Rain, and the Great West



11. OJAS BARRIO
 Museo de Arte de Lima, 1977
 Ojas Barrio, Lima, Peru, 1977
 Ojas Barrio, Lima, Peru, 1977
 Ojas Barrio, Lima, Peru, 1977

12. OJAS BARRIO
 Museo de Arte de Lima, 1977
 Ojas Barrio, Lima, Peru, 1977
 Ojas Barrio, Lima, Peru, 1977

13. OJAS BARRIO
 Museo de Arte de Lima, 1977
 Ojas Barrio, Lima, Peru, 1977
 Ojas Barrio, Lima, Peru, 1977

14. OJAS BARRIO
 Museo de Arte de Lima, 1977
 Ojas Barrio, Lima, Peru, 1977
 Ojas Barrio, Lima, Peru, 1977

15. OJAS BARRIO
 Museo de Arte de Lima, 1977
 Ojas Barrio, Lima, Peru, 1977
 Ojas Barrio, Lima, Peru, 1977

16. OJAS BARRIO
 Museo de Arte de Lima, 1977
 Ojas Barrio, Lima, Peru, 1977
 Ojas Barrio, Lima, Peru, 1977

17. OJAS BARRIO
 Museo de Arte de Lima, 1977
 Ojas Barrio, Lima, Peru, 1977
 Ojas Barrio, Lima, Peru, 1977

18. OJAS BARRIO
 Museo de Arte de Lima, 1977
 Ojas Barrio, Lima, Peru, 1977
 Ojas Barrio, Lima, Peru, 1977

19. OJAS BARRIO
 Museo de Arte de Lima, 1977
 Ojas Barrio, Lima, Peru, 1977
 Ojas Barrio, Lima, Peru, 1977

20. OJAS BARRIO
 Museo de Arte de Lima, 1977
 Ojas Barrio, Lima, Peru, 1977
 Ojas Barrio, Lima, Peru, 1977





Cara Romero, Chemehuevi, born 1977
First American Girl Series, "Naomi", 2018, gift of Loren G. Lipson, M.D.

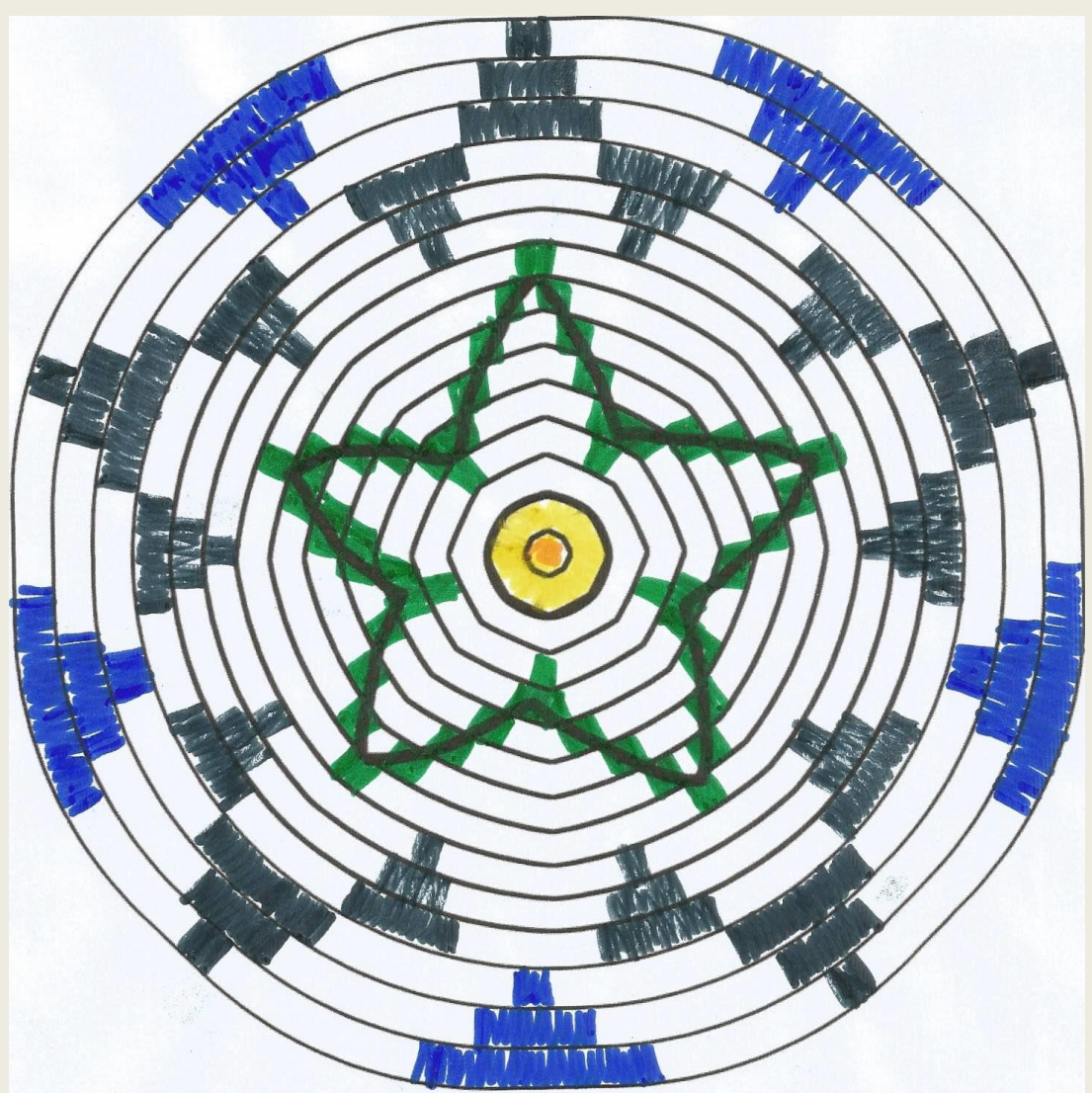




Cara Romero, *Water Memory*, 2015, gift of Loren G. Lipson, M.D.



Gerald Clarke, *Continuum Basket: Pivat (Tobacco)*, 2018, museum purchase with funds provided by Loren G. Lipson, M.D.



Clarke's design for *Continuum Basket* was inspired by Nickolasa Patencio's *Tray with Floral Tobacco Design* (left) (A88-1974), and Dona Tortes's *Tray with Geometric Bat Designs* (right), (A104-1974) which is exhibited in this gallery.



Clarke's design for *Continuum Basket* was inspired by Nickolasa Patencio's *Tray with Floral Tobacco Design* (left) (A88-1974), and Dona Tortes's *Tray with Geometric Bat Designs* (right), (A104-1974) which is exhibited in this gallery.











The End