

Palm Springs Art Museum

1.

Lynda Benglis
American, born 1941
Zimmer, 1987

bronze, copper, nickel, chrome

64 x 43 x 10 inches

Gift of Steve Chase

12-1994



2.

John Chamberlain
American, 1927-2011
Bees Knees, 1988

painted and chromium-plated steel

60 x 38 x 26 inches

Gift of Steve Chase

17-1994



3.

Paul Wonner
American, 1920-2008
Study for Still Life with Flowers and Butterfly, 1982

acrylic on paper

40 x 28 inches

Gift of Steve Chase

30-1994



4.

John Altoon
American, 1925-1969
Untitled, 1959

acrylic on canvas

Image: 69 7/8 x 68 7/8 in. (177.5 x 174.9 cm)
Frame: 70 3/8 x 69 3/8 in. (178.8 x 176.2 cm)

Gift of Steve Chase

45-1994



5.

Tom Berg
American, born 1943
Shadowed Symmetry, 1983

oil on canvas

16 x 20 inches

Gift of Steve Chase

48-1994



6.

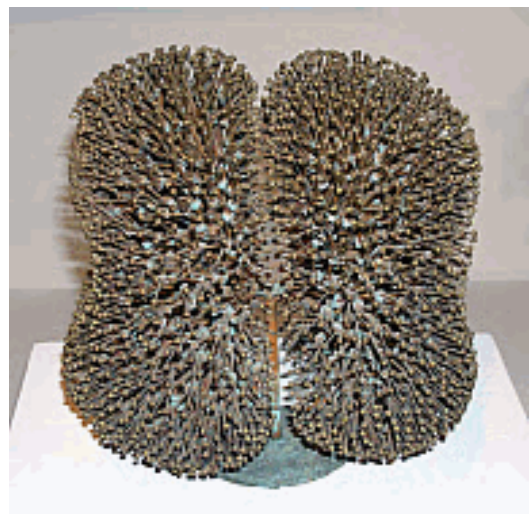
Harry Bertoia
American, born Italy, 1915-1978
Golden Bush, 1976

copper, bronze

14 x 12 x 15 inches

Gift of Steve Chase

49-1994



7.

Sam Francis
American, 1923-1994
Untitled, 1979

acrylic on canvas

120 x 96 inches

Gift of Steve Chase

51-1991



8.

Billy Al Bengston
American, born 1934
Pau Ahi Draculas, 1981

oil on canvas

68 x 68 inches

Gift of Steve Chase

54-1991



9.

Helen Frankenthaler
American, 1928-2011
Carousel, 1979

acrylic on canvas

Overall: 86 1/2 x 206 1/2 in. (219.7 x 524.5 cm)

Gift of Steve Chase

67-1994



10.

Sam Gilliam

American, born 1933

Indigo Danced, 1984

acrylic on canvas and enamel on aluminum

57 x 67 inches

Gift of Steve Chase



72-1994

11.

Nancy Graves

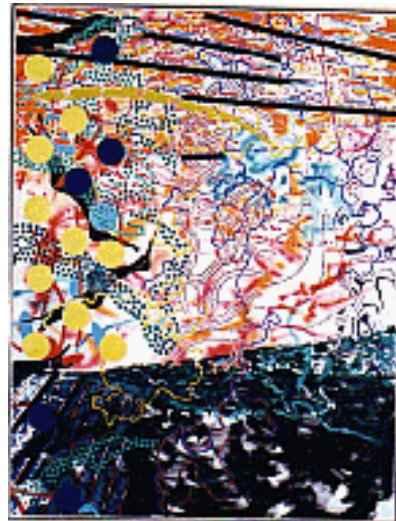
American, 1940-1995

Distract, 1980

oil on canvas

84 x 64 inches

Gift of Steve Chase



75-1994

12.

Beatrice Wood

American, 1893-1998

Fantastic Teapot, 1975

blue and gold luster earthenware

13-3/4 x 18 x 9-3/4 inches

Gift of Steve Chase



114-1994

13.

Rinaldo Cuneo
American, 1877 - 1939
Desert Landscape

Oil on canvas

Overall: 34 × 50 in. (86.4 × 127 cm)

On loan from the Stephen B. Chase Collection at The Living Desert Zoo
and Gardens

L2018.122.1



14.

Conrad Buff
Swiss, 1886-1975
Palm Springs, ca. 1928

Oil on canvas laid on canvas

Overall: 34 × 45 in. (86.4 × 114.3 cm)

On loan from the Stephen B. Chase Collection at The Living Desert Zoo
and Gardens

L2018.122.2



15.

Jean Mannheim
1863 - 1945
California Mountains and Dunes, Coachella Valley

Oil on board

Overall: 20 × 24 in. (50.8 × 61 cm)

On loan from the Stephen B. Chase Collection at The Living Desert Zoo
and Gardens

L2018.122.3



16.

Frank Coburn

American, 1862 - 1938

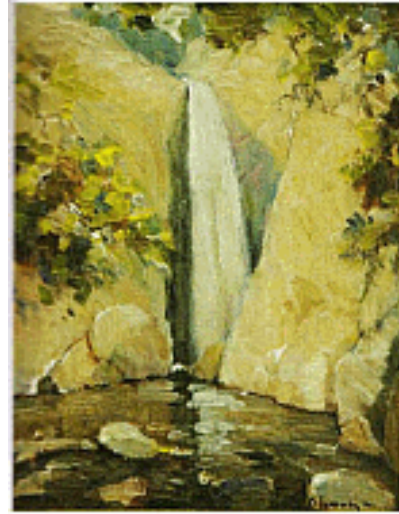
Tahquitz Waterfall, Palm Springs, California, ca. 1928-1938

Oil on cardboard

Overall: 10 × 8 in. (25.4 × 20.3 cm)

On loan from the Stephen B. Chase Collection at The Living Desert Zoo and Gardens

L2018.122.4



17.

Frank Coburn

American, 1862 - 1938

Tahquitz Creek, ca. 1928-1939

Oil on cardboard

Overall: 10 × 8 in. (25.4 × 20.3 cm)

On loan from the Stephen B. Chase Collection at The Living Desert Zoo and Gardens

L2018.122.5

