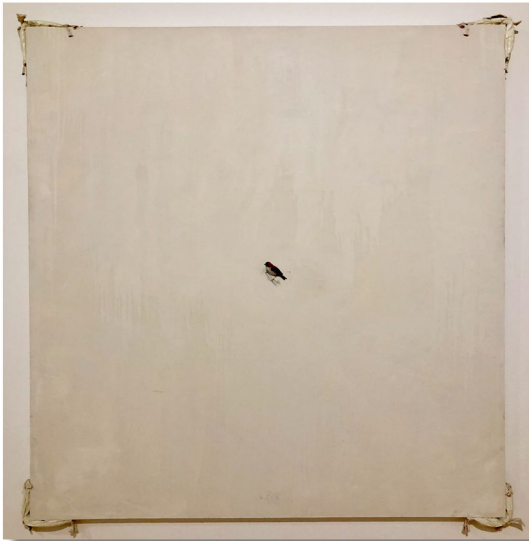


Tour Theme/Connections Exercise Group 1 - Gorelik Gallery

1. Locate all of these art pieces.
2. Determine a theme(s) or connection(s) for a tour in this gallery.
3. Develop engagement questions for each (consider questions that will tie the pieces together).



Bird, Enrique Martinez Celaya



Littlesister, Peter Shelton



After The Future, Jim Lambie



Waterdrop Series, Tschang Yeul Kim

Theme(s) or connection(s) for a tour in Gorelik Gallery - Group 1

1. Optical Illusion/Perspective
2. Minimalist
3. Environmental Issues
4. Contradiction

Engagement questions for each artwork:

Artwork #1: Bird

1. What's the reason for the negative space?
2. What do you see?
3. Why is the bird there? What is it doing there?
4. What's the issue with snowfall?

Artwork #2: Littlesister

1. What's the most obvious thing about this piece?
2. What is most important?
3. _____
4. _____

Artwork #3: After the Future

1. What do you think it's made of?
2. _____
3. _____
4. _____

Artwork #4: Waterdrop Series

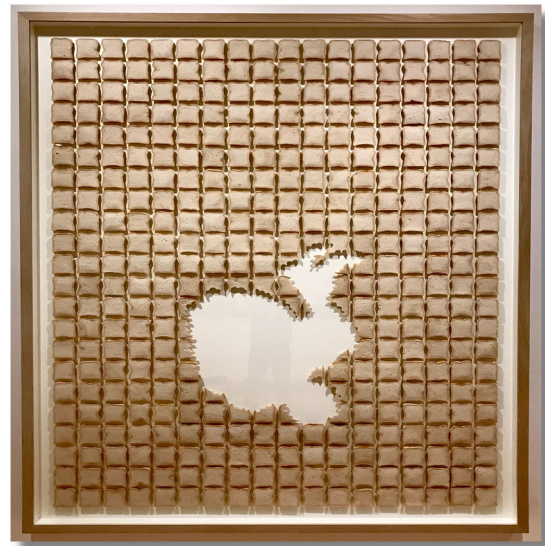
1. What is the source of the water?
2. How long has it been there?
3. What is the surface material?
4. _____

Tour Theme/Connections Exercise Group 2 - MacMillan Gallery

1. Locate all of these art pieces.
2. Determine a theme(s) or connection(s) for a tour in this gallery.
3. Develop engagement questions for each (consider questions that will tie the pieces together).



Untitled, Max Neumann



Mother's Pride IV, Antony Gormley



Prototype for A-Z Cool Chamber
Andrea Zittel



I See Who You are, 03-12-2012 at 11:19:04 AM,
Moreno Valley. CA
John Divola

Theme(s) or connection(s) for a tour in MacMillan Gallery - Group 2

- 1. Cycle of life
- 2. Human isolation
- 3. Illusion
- 4. Deconstruction

Engagement questions for each artwork:

Artwork #1: Untitled

- 1. What would it be like to enter into that space?
- 2. _____
- 3. _____
- 4. _____

Artwork #2: Mother's Pride

- 1. What does bread mean to you?
- 2. _____
- 3. _____
- 4. _____

Artwork #3: Prototype Cool Chamber

- 1. Did you ever build a kid's fortress or play house?
- 2. _____
- 3. _____
- 4. _____

Artwork #4: I See Who You Are

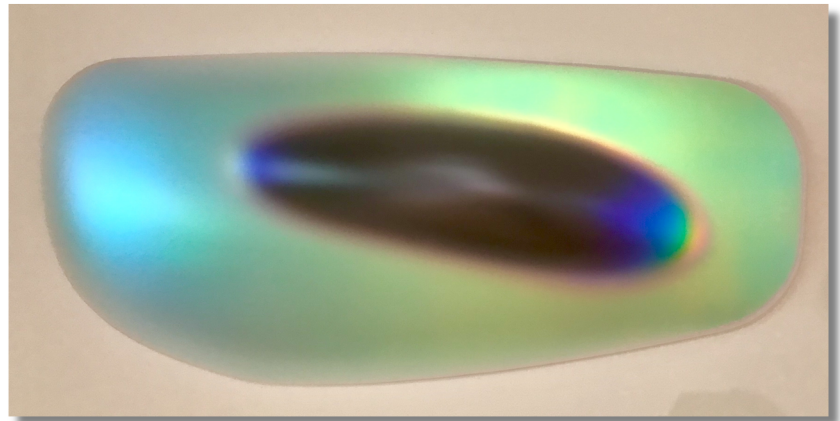
- 1. _____
- 2. _____
- 3. _____
- 4. _____

Tour Theme/Connections Exercise Group 3 - Maslon Gallery

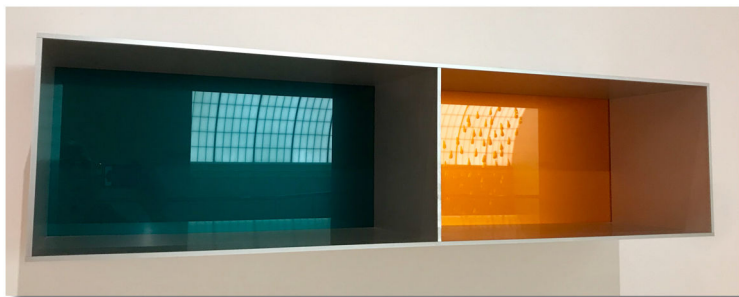
1. Locate all of these art pieces.
2. Determine a theme(s) or connection(s) for a tour in this gallery.
3. Develop engagement questions for each (consider questions that will tie the pieces together).



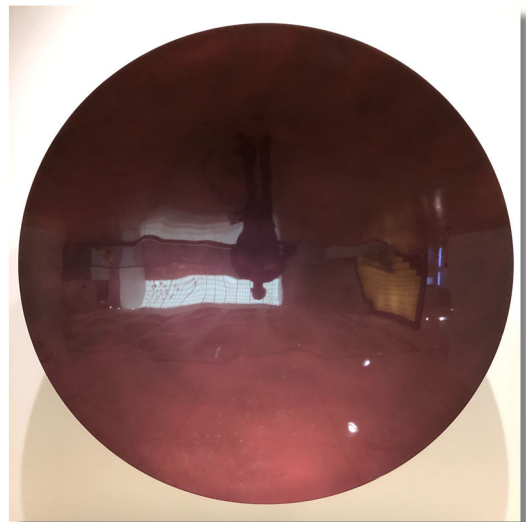
Red Lens, Frederick Eversley



Hyper Ellipsoid Glo-Pod, Gisela Colón



Untitled (DJ 88-45 Menziken), Donald Judd



Corona, Anish Kapoor

Theme(s) or connection(s) for a tour in Maslon Gallery - Group 3

- 1. Light
- 2. Reflections
- 3. Technical/Fabrication process
- 4. Finish Fetish/Synthetic

Engagement questions for each artwork:

Artwork #1: Red Lens

- 1. _____
- 2. _____
- 3. _____
- 4. _____

Artwork #2: Glo-Pod

- 1. _____
- 2. _____
- 3. _____
- 4. _____

Artwork #3: Untitled

- 1. _____
- 2. _____
- 3. _____
- 4. _____

Artwork #4: Corona

- 1. _____
- 2. _____
- 3. _____
- 4. _____

Tour Theme/Connections Exercise Group 4 - Anixter Gallery

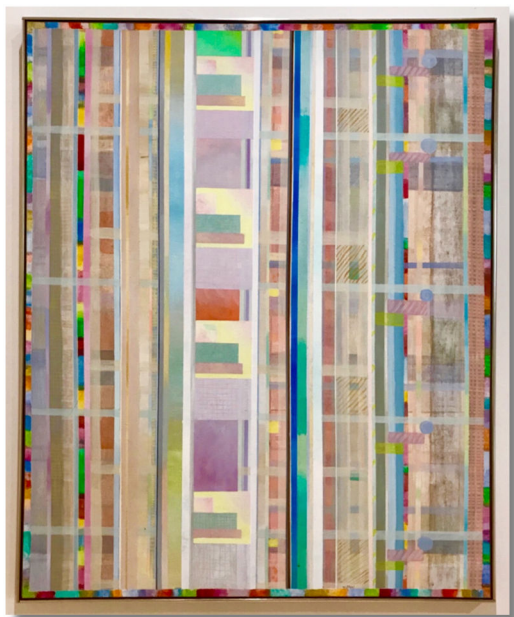
1. Locate all of these art pieces.
2. Determine a theme(s) or connection(s) for a tour in this gallery.
3. Develop engagement questions for each (consider questions that will tie the pieces together).



Creation, Lita Albuquerque



1952 (Rings), Sarah Morris



Homage to Louis Sullivan, Robert Natkin



Saturno, Lino Tagliapietra

Theme(s) or connection(s) for a tour in Anixter Gallery - Group 4

1. Color

3. Creation

2. Circles

4. _____

Engagement questions for each artwork:

Artwork #1: Creation

1. What's the story here?

2. Do you see/feel movement?

3. _____

4. _____

Artwork #2: Rings

1. What do you think the rings represent?

2. What does the negative space mean?

3. What do the incomplete circles mean?

4. _____

Artwork #3: Homage

1. What do the circles represent?

2. _____

3. _____

4. _____

Artwork #4: Saturno

1. What does the precision mean?

2. Is this abstract or objective?

3. _____

4. _____

Tour Theme/Connections Exercise Group 5 - Kemp Gallery

1. Locate all of these art pieces.
2. Determine a theme(s) or connection(s) for a tour in this gallery.
3. Develop engagement questions for each (consider questions that will tie the pieces together).



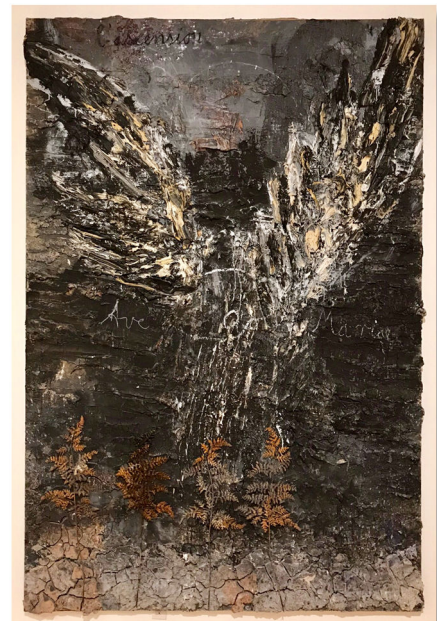
Harvest Of Death, Kota Ezawa



And the Last Fight Let Us Face, Hung Liu



1.4.03 (After Caravaggio), Timothy Tompkins



L'Ascension, Anselm Kiefer

Theme(s) or connection(s) for a tour in Kemp Gallery - Group 5

1. Death
2. Violence
3. Suffering/Sacrifice
4. Layers/Story telling

Engagement questions for each artwork:

Artwork #1: Harvest of Death

1. What's going on here?
2. What do you see that makes you say that?
3. _____
4. _____

Artwork #2: Last Fight

1. Why did the artist pair these two subjects?
2. _____
3. _____
4. _____

Artwork #3: After Caravaggio

1. What's happening here?
2. Why is it blurry?
3. _____
4. _____

Artwork #4: L'Ascencion

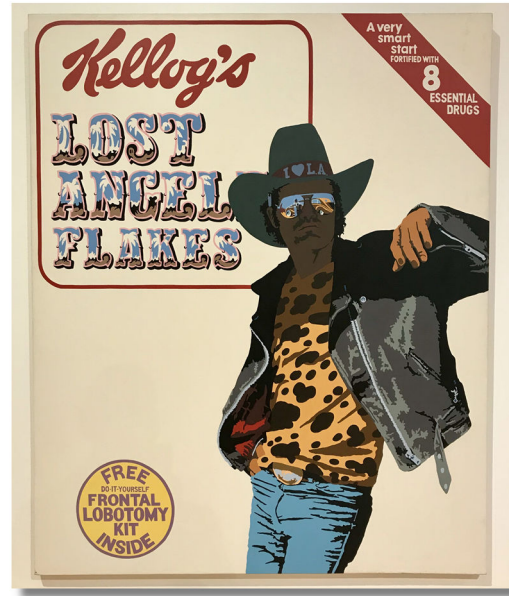
1. Why did the artist write "Ave Maria"?
2. What's the meaning of the ferns? Why?
3. What does the texture convey?
4. Is it an angel or a bird?

Tour Theme/Connections Exercise Group 6 - Rubinstein Gallery

1. Locate all of these art pieces.
2. Determine a theme(s) or connection(s) for a tour in this gallery.
3. Develop engagement questions for each (consider questions that will tie the pieces together).



Shoplifter, Armando Lerma



Lost Angel Flakes, Billy Schenk



Shouldering the Load
Robert Arneson



Honky Tonk, Luis Jimenez

Theme(s) or connection(s) for a tour in Rubinstein Gallery - Group 6

1. People and their lives
2. Social commentary
3. Popular culture
4. Commercialism

Engagement questions for each artwork:

Artwork #1: Shoplifter

1. Why is the head so small?
2. What's the stereotype here?
3. Why did the artist add the text, "Shoplifter"?
4. What emotions are conveyed by the clenched fists and vacant eyes?

Artwork #2: Lost Angel Flakes

1. What do you see in the sunglasses?
2. What does this say about Los Angeles?
3. Why is Kellogg's misspelled?
4. What's beneath the surface?

Artwork #3: Shouldering the Load

1. What do you see in the face?
2. What was his lifestyle?
3. _____
4. _____

Artwork #4: Honky Tonk

1. What's happening here? Why is there no alcohol?
2. Where is this? Is it reminiscent of anything?
3. Why is it so sparkly?
4. Why is the electrical plug so prominent?

Tour Theme/Connections Exercise Group 7 - Mezzanine

1. Locate all of these art pieces.
2. Determine a theme(s) or connection(s) for a tour in this gallery.
3. Develop engagement questions for each (consider questions that will tie the pieces together).



Joshua D's Wall, Michael Petry



Bathers (study), Diego Rivera



Growth, Jean Arp



Golden Rain, Michael Petry

Theme(s) or connection(s) for a tour in Mezzanine Galleries - Group 7

1. Shape_____

3. Surface_____

2. Texture_____

4. Reflection_____

Engagement questions for each artwork:

Artwork #1: Joshua D's Wall

1. What do you see? What do you see inside?

2. What do the shapes mean to you?

3. What do the colors represent?

4. _____

Artwork #2: Bathers

1. What going on here?

2. How was reflection used here?

3. _____

4. _____

Artwork #3: Growth

1. How would you describe this?

2. _____

3. _____

4. _____

Artwork #4: Golden Rain

1. What do you see?

2. What would you call this?

3. _____

4. _____