

# spirit house

**If you don't know the Bawley Point area – it's one of Australia's best-kept secrets.** 3 and a half hours from Sydney and just over 2 hours from Canberra. There are a set of fine-sand beaches linked via basalt headlands, so one beach is always safe, swimmable, or surf-able



The water's pristine – with great seasonal fishing. There's 5 surf-breaks within a kilometre or two, and one off each Point. The whales have returned and our bays are resting places for mothers & calves August through till November

The local family of dolphins has grown so big, they've formed pods by age. The native birds and 'roos come and go as they please. And, now the coast is marine reserve, the seals are fishing off the Points



There's bush-walks and bike tracks galore. Your bikes/kayaks/surfboards will be safe in our big lock-up garage



We've a simple wish. Rather than locking the place up, we'd rather special people had a memorable time in this remarkable part of the world Which brings us to the commercial side of things



The Spirit House is available for weekly rental @ \$2,500 in the high season (Dec, Jan, Easter) & \$2,000 for the rest of the year. Off-season weekends - Friday to Sunday evening are \$550. Long weekends by negotiation

Please contact Dee or Mike at [thespirithouse@me.com](mailto:thespirithouse@me.com)

Or, better still, talk to Al our property manager at [almac1961@gmail.com](mailto:almac1961@gmail.com) PH: 0244 572 622

# spirit house



**In Thailand spirit-houses protect, sustain and give good energy to a buildings' occupants**

We thought that was an appropriate name for our home at Bawley Point on the New South Wales South Coast

After many years of renting in many parts of the world, (mainly Asia as you can see) we've made our special retreat available for select rentals, suitable for up to two couples at a time

The Balinese-inspired house is at the end of a cul-de-sac, backing on to an original forest-wetland reserve full of mahoganies, water birds & swamp wallabies. Cormorant Beach is only 100m through the beach reserve. Close enough for a pre-coffee morning dip or for the crash of the waves to lull you asleep at night



The central, open pavilion comprises modern kitchen, lounge, dining & slumping-in-front-of-the-combustion-fire areas. There are two bedrooms with queen beds, one with en-suite, the other with a separate bathroom

Outside there's a deck visible from space, a sunroom to enjoy the bush setting on rainy days, there's garden aplenty for lounging, and a secluded Thai Sala. Oh, and a plunge pool – for hot summer weather

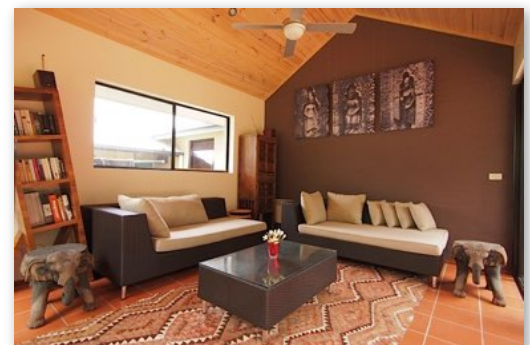
We've put in a digital tv, dvd, airplay & decent sound system, so you can be as connected to the world as you wish. Especially if you bring your i-devices



Should supplies run short the village shops comprising: IGA Supermarket, Bottleshop, Newsagent, Takeaway & Pharmacy, - are 5 minutes down the road



The Spirit House is available for weekly rental @ \$2,500 in the high season (Dec, Jan, Easter) & \$2,000 during the year. Off-season weekends are \$550. Long weekends by negotiation. Please bring your own sheets & towels



To Book, contact Dee or Mike at [thespirithouse@me.com](mailto:thespirithouse@me.com)

Or, better still, talk to Al our property manager living next door at: [almac1961@gmail.com](mailto:almac1961@gmail.com) Ph:0244 572 622