

# Wear Catchment Partnership

## Memorandum of Understanding





## Revised for 220921

### Preamble

The purpose of this Memorandum of Understanding has reviewed updated and formalised the Ways of Working originally agreed April 2014 and set in the document "*Wear Catchment Partnership Group: Governance and Structure*"

The Wear Catchment Partnership Group **at the date of signature** consists of the following organisations:

Auckland Castle Trust  
 Durham Cathedral  
 Durham County Council  
 Durham Heritage Coast Partnership  
 Durham University  
 Durham Wildlife Trust  
 East Durham College (Houghall)  
 Environment Agency  
 Forestry Commission  
 Groundwork North East & Cumbria  
 North Pennines AONB Partnership  
 Northumbrian Water Group  
 Sunderland City Council  
 Wear Rivers Trust

It is recognised that this is a living document will require modification from time to time to reflect changing **and/or membership** circumstances. Any agreed modifications will be documented under a unique version number based on the issue date.

### **Role of the Wear Catchment Partnership Group**

The WCPG delivers on local priorities within the national performance criteria set annually by DEFRA through the Catchment Based Approach (CaBA).

The WCPG fulfils the following functions:

- Create and maintain a Catchment Management Plan comprising 3 sections:
  - **Business planning** – describes how the partnership is managed and how it will be sustainable into the future.
  - **Catchment overview** – presents the Wear Catchment and introduces its sub-catchments, and our approach to using data and evidence.
  - **Action plan** – sets out the delivery activities we will undertake to achieve our objectives.
- A forum to share information and provide visibility of partner organisations strategic priorities and activities. Monitor delivery of agreed actions from previous meetings.
- The WCPG does to act in an oversight or monitoring capacity. All project management, communication and monitoring functions remain with the project-specific groups established under the Action Plan
- Link catchment strategic priorities to other strategic bodies eg North East Local Economic Partnership and Local Nature Partnerships as opportunities arise.
- Project integration based on strategic priorities at a regional, cross catchment, catchment or local scale.
- Share and celebrate local delivery with wider stakeholders and local partners.
- Where appropriate, provide mutual support to other catchment partnerships on over lapping issues.

- Act as an advocate for the Wear Catchment Partnership on other groups that partners attend.

Partners will respect confidentiality of information shared. Any information shared will remain strictly within the WCPG unless specifically authorised by the information owner.

The WCPG is not a constituted body and does not apply for, or hold funding, in its own right. Individual projects are registered under the Action Plan as an element of the Catchment Management Plan.

Each action plan project will have a designated lead partner, responsible for co-ordinating any project meetings, development, delivery, communications, monitoring and reporting progress into the WCPG.

WPCG meeting frequency: 3 times annually.

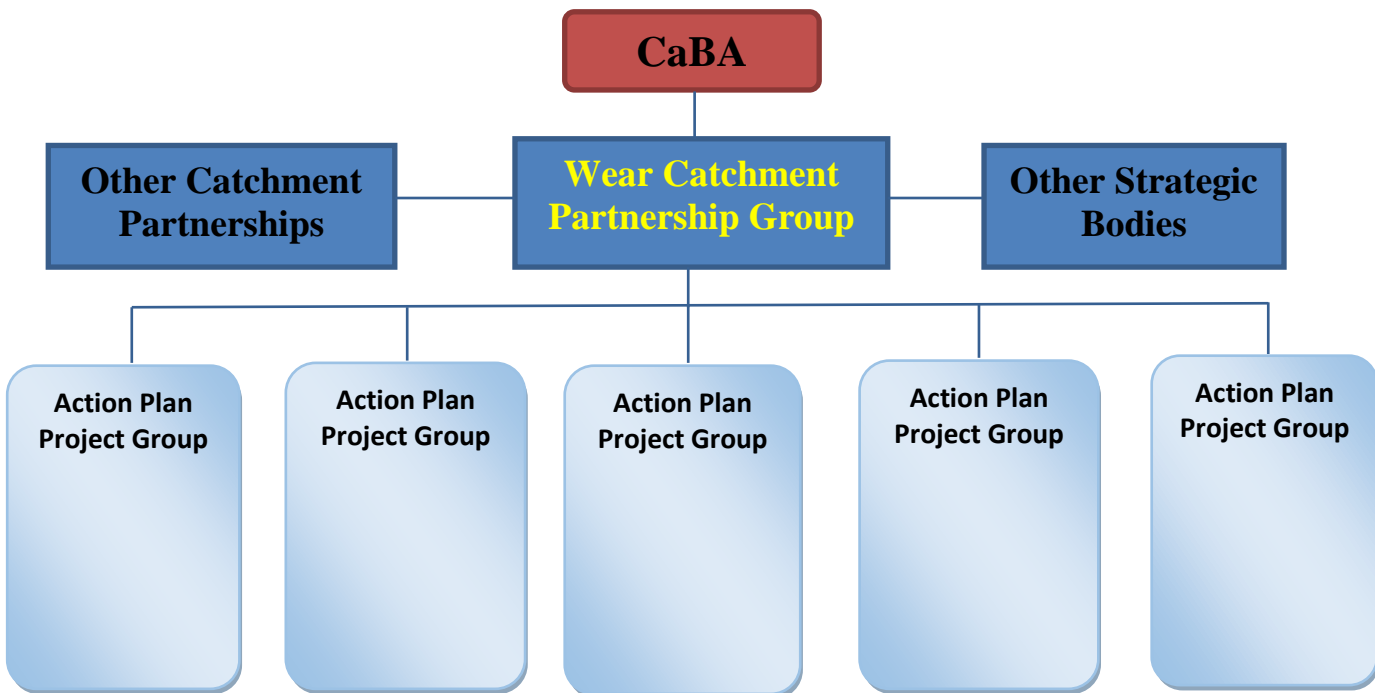
Individual project action plan meeting frequency: as required.

WCPG meetings are based on a standard agenda:

- Review previous meeting agreed actions.
- Review progress against action plan milestones
- Partner round table to bring forward-looking proposals/information to the group

### Catchment Partnership Structure

The structure schematic shows the WCPG operates under the national auspices of the Catchment Based Approach (CaBA) whilst reflecting the catchment and partners priorities. The Catchment Partnership will engage with other Catchment Partnerships and strategic bodies. Active delivery will be through the Action Plan controlled through and by lead partners.



### Outline Structure and Function

The partnership will operate over three integrated scales:

1. Regional
2. Cross Catchment



### 3. Catchment

#### Regional, Cross Catchment and Catchment Working.

Regional: covering the whole of the Northumbria River Basin. Potential opportunities for very large scale projects e.g. "Green Economy," "Heritage" or "Resilience" thematic projects bidding for NELEP, EU, NLHF or other large scale funding.

Cross Catchment: two areas offer the most potential for cross-catchment with partner "umbrella" organisations focussed on geographically distinct designated areas not defined by the Wear catchment:

- North Pennine AONB Partnership covering the Tees, Wear, Tyne and Eden headwaters.
- Durham Heritage Coast Partnership covering the coastline and coastal streams from the Tyne to the Tees.

Catchment: construction of a narrative linking the headwaters to the sea underpinning large scale project development focussing on catchment connectivity, linking the upper catchment, tributary sub catchments through the middle and lower catchments and coastal waters.

**Agreed as our joint understanding of the Wear Catchment Partnership principles of operation, structures and processes as at the date below**

Signature	Organisation, Name, Position	Date
	Auckland Castle Trust <hr/> <hr/> <hr/>	<hr/>
	Durham Cathedral <hr/> <hr/> <hr/>	<hr/>
	Durham County Council <hr/> <hr/> <hr/>	<hr/>
	Durham Heritage Coast Partnership <hr/> <hr/> <hr/>	<hr/>
	Durham University <hr/> <hr/> <hr/>	<hr/>
	Durham Wildlife Trust <hr/> <hr/> <hr/>	<hr/>



	East Durham College (Houghall) <hr/> <hr/> <hr/>	<hr/>
	Environment Agency <hr/> <hr/> <hr/>	<hr/>
	Forestry Commission <hr/> <hr/> <hr/>	<hr/>
	Groundwork North East & Cumbria <hr/> <hr/> <hr/>	<hr/>
	North Pennines AONB Partnership <hr/> <hr/> <hr/>	<hr/>
	Northumbrian Water Group <hr/> <hr/> <hr/>	<hr/>
	Sunderland City Council <hr/> <hr/> <hr/>	<hr/>
	Wear Rivers Trust <hr/> <hr/> <hr/>	<hr/>