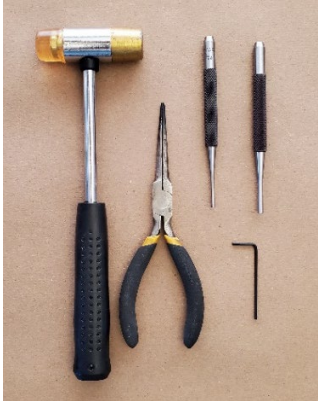


## Installation instructions for CZ Bren 2 Folding Charging Handle

**▲ WARNING: BEFORE STARTING, MAKE SURE THE WEAPON IS UNLOADED, THE CHAMBER IS EMPTY AND THE SAFETY IS ENGAGED.**

Below is a step-by-step pictorial of the installation process.

Always practice safety measures including safety glasses while working with tools.



Required tools: Brass hammer,  
Needle nose pliers,  
1/8" or 5/32" punch tool



Package includes: FCH handle, Base, spring, 2X  
slotted pins, Allen head screw and tool preassembled.  
**Note: Oval shaped hole deleted for FCH V2**

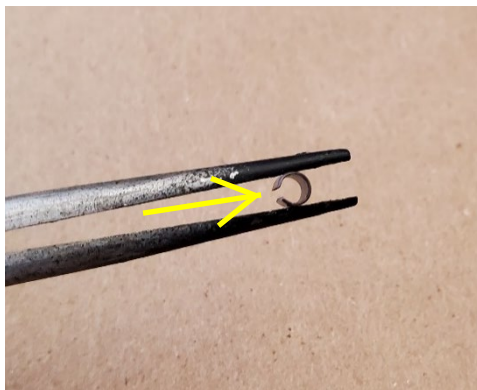
Remove the Bren 2 stock, recoil spring, BCG and charging handle/carrier.



1. Using the punch tool, remove 2 stock  
roll pins from CH carrier



CH carrier after stock CH removed



2. Pinch the provided slotted pin  
with needle nose pliers.  
**Note: Slot facing inwards.**



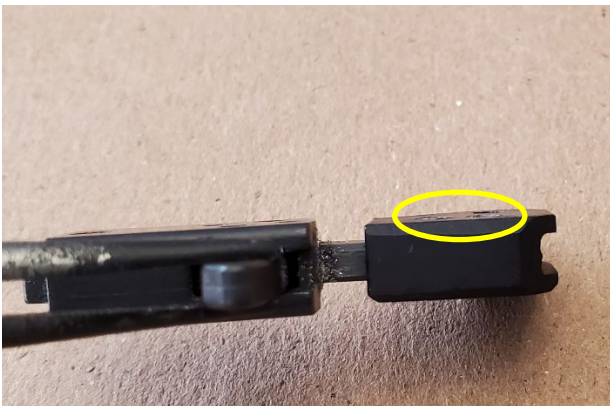
Slide the base over the carrier arm, Pinch the slotted pin  
with the needle nose pliers, place the pin over the upper  
hole as shown and tap in ever so slightly to where the pin  
is captured. Align the pin holes with the carrier arm holes  
and drive the pin all the way in.  
**Note: Notice base orientation and carrier hook.**



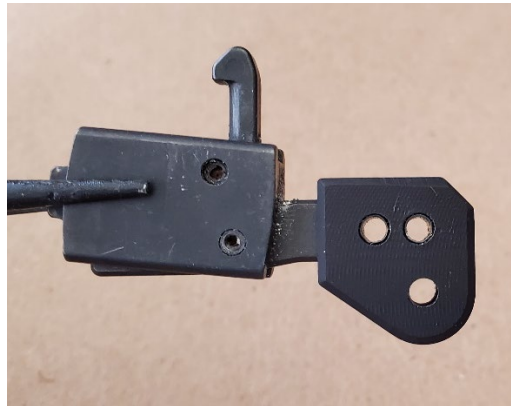
3. Repeat step 2 for the 2<sup>nd</sup> pin



Both pins tapped in the base



4. Note: Insure both pins are fully seated and are completely flush with the base.



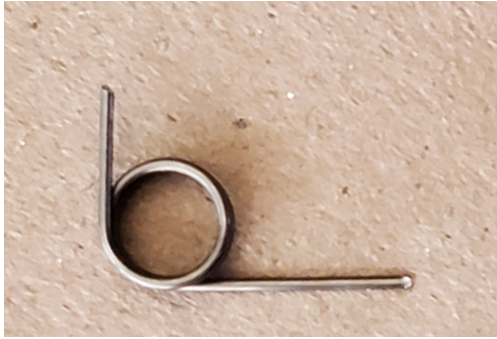
FCH base installation complete



5. Slide FCH handle on base and align the screw hole.



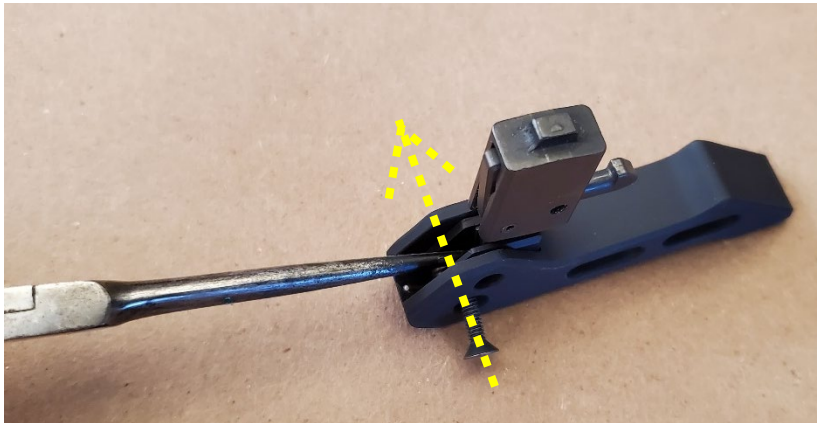
Place FCH on the side as shown. Note: Keep screw tip flush with base interior wall (photo shows screw tip incorrectly extended beyond interior wall)



6. Provided spring legs have different lengths: Left (vertical) leg is short, right (horizontal) leg is long.



Place spring inside the base with long leg against CH carrier arm, short leg at tail end of the FCH cavity. Align spring coil with Allen screw. **Note: Photo shows needle nose pliers capturing the short leg side.**



7. Press spring down to where the spring coil is below the screw. Push the screw in to capture the spring.



**For reference, note spring position and orientation**

8. Use the supplied Allen tool to screw the Allen screw all the way in.

**Note: apply a small drop of blue Loctite on the threaded side of the FCH.**

**Note: do not use excessive force to secure the screw. Allen screw is secure once screw head is flush with the FCH.**



9. FCH installation is complete.



10. Insert FCH back in the rifle. After reinstalling BCG, buffer spring and stock, give your new FCH a few hard pulls to confirm function.