



**TRANSPACIFIC
RESOURCES INC.**

MINERALS THAT POWER PROGRESS

CORPORATE PRESENTATION 2025





**TRANSPACIFIC
RESOURCES INC.**
MINERALS THAT POWER PROGRESS

FORWARD - LOOKING INFORMATION

This presentation contains projections and forward-looking information that involve various risks and uncertainties, including, without limitation, statements regarding the potential extent of mineralization, resources, reserves, exploration results and plans and objectives of Transpacific Resources Inc. These risks and uncertainties include, but are not restricted to, the amount of geological data available, the uncertain reliability of drilling results and geophysical and geological data and the interpretation thereof and the need for adequate financing for future exploration and development efforts. There can be no assurance that such statements will prove to be accurate. Actual results and future events could differ materially from those anticipated in such statements. These and all subsequent written and oral forward-looking statements are based on the estimates and opinions of management on the dates they are made and are expressly qualified in their entirety by this notice. The Company assumes no obligation to update forward looking statements should circumstances or management's estimates or opinions change.



WHO WE ARE

Project portfolio comprised of diversified commodities including Au, Ag, Ni, Co, Cu, PGM, Zn within 3 properties spread along the Larder-Cadillac and Destor-Porcupine Fault Zones in Ontario and Quebec.

Our Vision

Transpacific Resources Inc. is a junior mining company supported by a forward-looking board of directors and professional geologists. The company endeavors to move forward with future property acquisitions and to become re-listed on a Canadian Exchange.

Our Expertise

At Transpacific Resources Inc., we specialize in exploration of base and precious metals with an emphasis on critical minerals. We are a well seasoned team of professional geologists with worldwide experience, and a solid business acumen. Our interest has been focused within Northern Ontario along the Larder-Cadillac Break and Destor-Porcupine Break.



MANAGEMENT AND BOARD



Jim Renaud
CEO, PhD, P.Geo



Robert Dillman
Corporate Secretary, P.Geo



Marty Huber
Chairman of the Board, P.Geo



Erik Martin
CFO, CPA

Frances Clay
Director



PROPERTY PORTFOLIO

Critical Mineral and Precious Metal properties in strategic areas within
Ontario and Quebec

Field of Dreams Property (~5,679 ha)

- Splay off the Destor-Porcupine Break system
- Gold & Critical Metals Ni-Cu-Zn
- Ontario (~3175 ha) & Quebec (~2504 ha)

Midlothian South Property (~2,770 ha)

- Western extension of Larder-Cadillac Break system
- Ni-Cu-PGE

Ferris Lake Property (~542 ha)

- Western extension of Larder-Cadillac Break system
- Ni-Cu-PGE



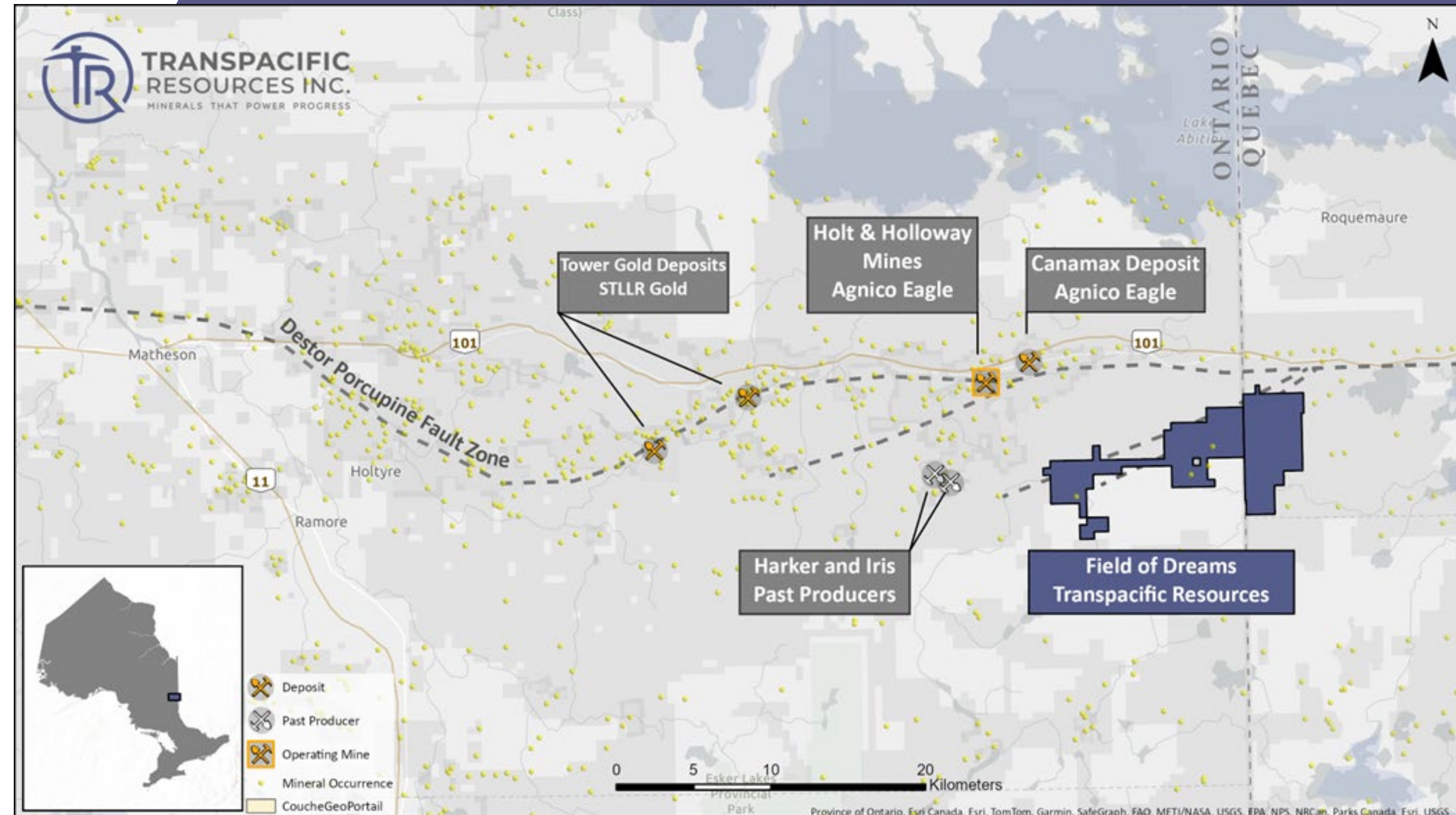
FIELD OF DREAMS

Commodities of Interest: Cu, Ni, Zn, Au, Ag

Location: 60 Kilometers east of Matheson in Holloway and Tannahill Townships, Ontario and extends eastward into the Lac-Duparquet and Rapide-Danseur Municipalities, Quebec

Size: 146 claims, ~3175 ha (Ontario side); 57 claims, ~2504 ha (Quebec side). Claims are situated within Tannahill, Holloway, and Marriott Townships (Ontario); and the Lac-Duparquet and Rapide-Danseur Municipalities (Quebec).

The assemblage of claims in Ontario and Quebec covers ~5679 ha of ground covering important geological structures from Ontario into the province of Quebec.



FIELD OF DREAMS

Geological Setting

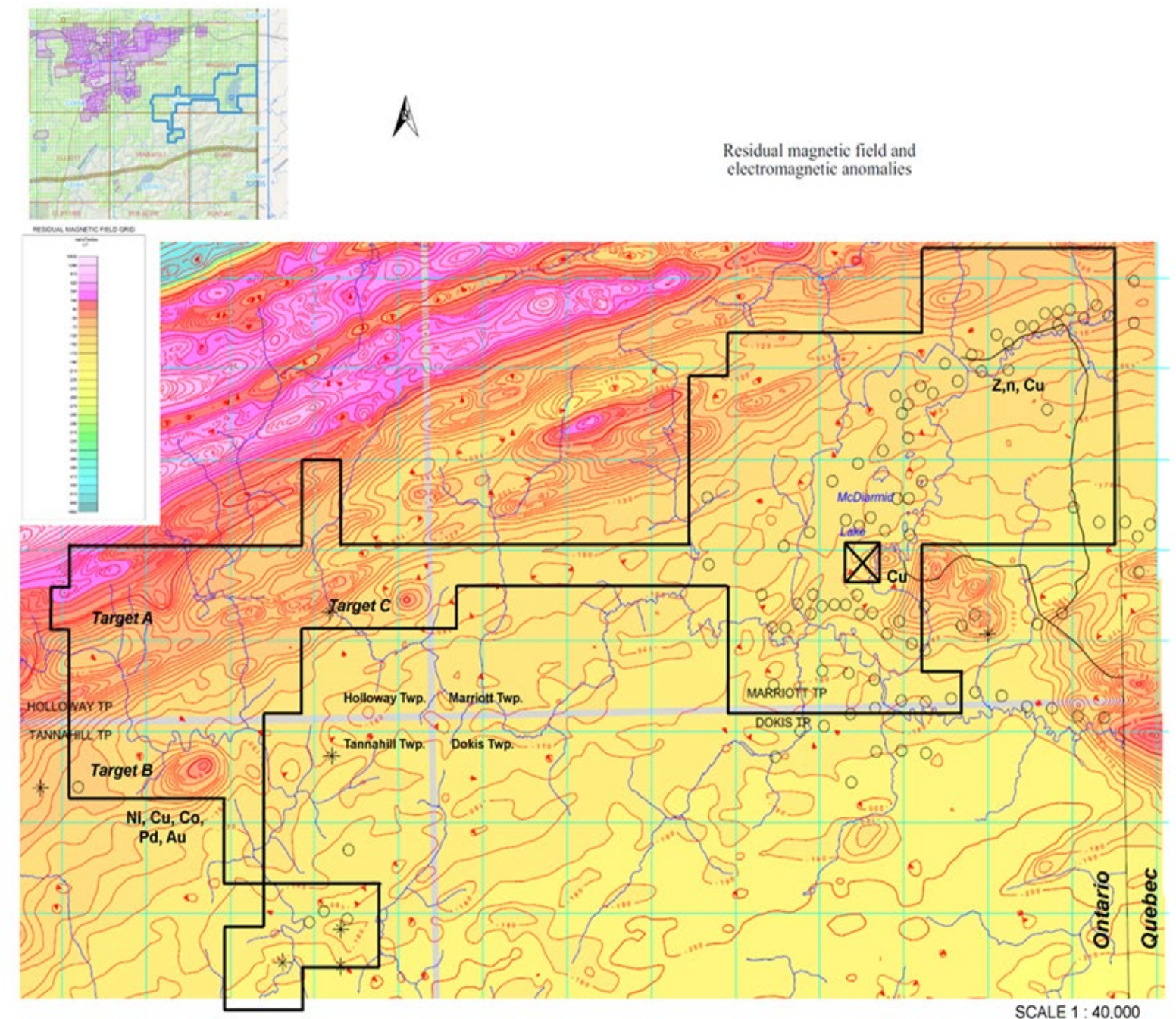
- Located in the Harker-Holloway section of the Abitibi Greenstone Belt.
- The property sits on the north limb of the Blake River Synclinorium and roughly 6 km south of the Destor Porcupine Fault Zone.
- The property is underlain by Archean units of the Upper Blake River assemblage. According to Mining Lands Administration System (MLAS) the property encompasses three mineral occurrences: two gold showings (Surface Till Sample 86-16-B & 86-15-B), one nickel showing (Sudbury Contact B) and borders a copper showing (Roy-North).

Exploration History

- History of exploration dating back to 1928 consisting of: diamond drilling, trenching, line cutting, prospecting, geological mapping, ground geophysical surveys consisting of magnetometer and VLF-EM, airborne geophysical surveys, petrology studies, MMI surveys, assay and thogeochemistry .

Key Findings

- Brief summary of historic drilling and trenching: “B-Target” DDH 57 meters of 0.17% Ni and 0.052% Cu including 14.3 m of 0.243% Ni and 0.1% Cu and 125 ppm Pd, the hole ended in mineralization.



MIDLOTHIAN SOUTH

Commodities of Interest: Ni, Cu, Co, Pt, Pd, Au, Ag

Location: ~112 Km southwest of Kirkland Lake; ~30 Km southwest of Matachewan, Ontario, ~3 Km southwest of the historic Stairs Gold Mine

Size: 130 claims, ~2770 ha. Claims are situated within portions of Halliday, Midlothian, Mond, and Raymond townships.

Recent Work and Property Potential

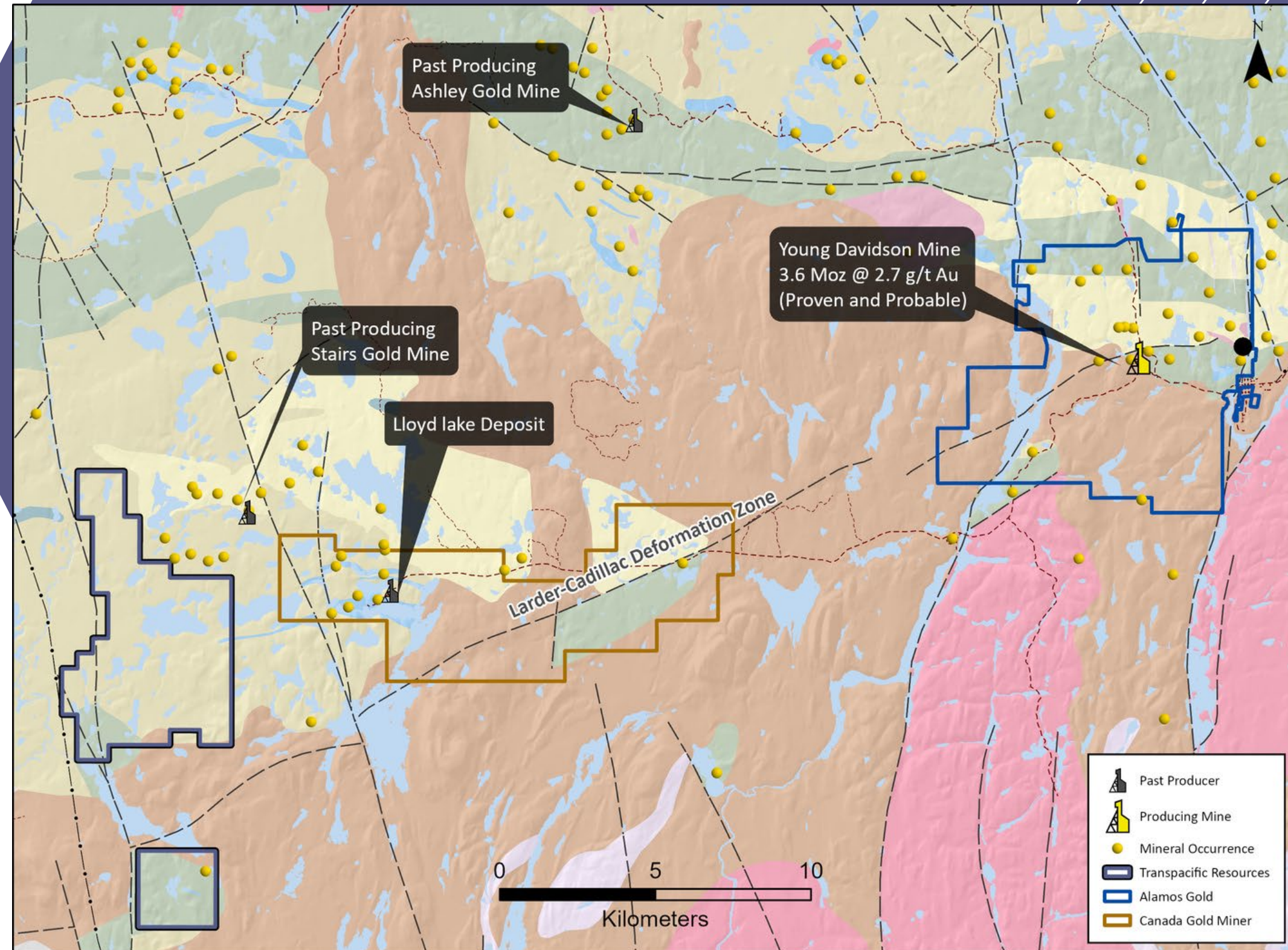
- Geophysics survey flown during summer 2024 – OJEP Grant (\$40k)
- Strong EM conductors may well represent the western extension of the prolific base and precious metal hosting Cadillac Larder-Lake Fault Zone (“CLFZ”).
- Objective is to (1) extend the Ni-mineralization from the adjacent claims onto Transpacific’s claim block, and (2) to make a new discovery of additional gold and base metal mineralization along the western extension of the CLFZ.



MIDLOTHIAN SOUTH

Geological setting

- Situated in the western Abitibi Subprovince.
- Underlain mostly by NE-SW, steeply dipping Archean rocks of the Halliday Formation comprised of felsic metavolcanic units of rhyolite and dacite and less extensive intermediate volcanic rocks consisting of andesite. These units have been intruded by ultramafic and mafic rocks consisting of gabbro, peridotite and dunite and by NW-SE trending late-stage Proterozoic dikes of diabase.
- Situated on a series of parallel NE-SW trending faults associated with the west extension of the Larder Lake Break.
- Shearing and hydrothermal alteration such as Fe-Mg carbonate and potassic alteration (sericite) is extensive across the property.

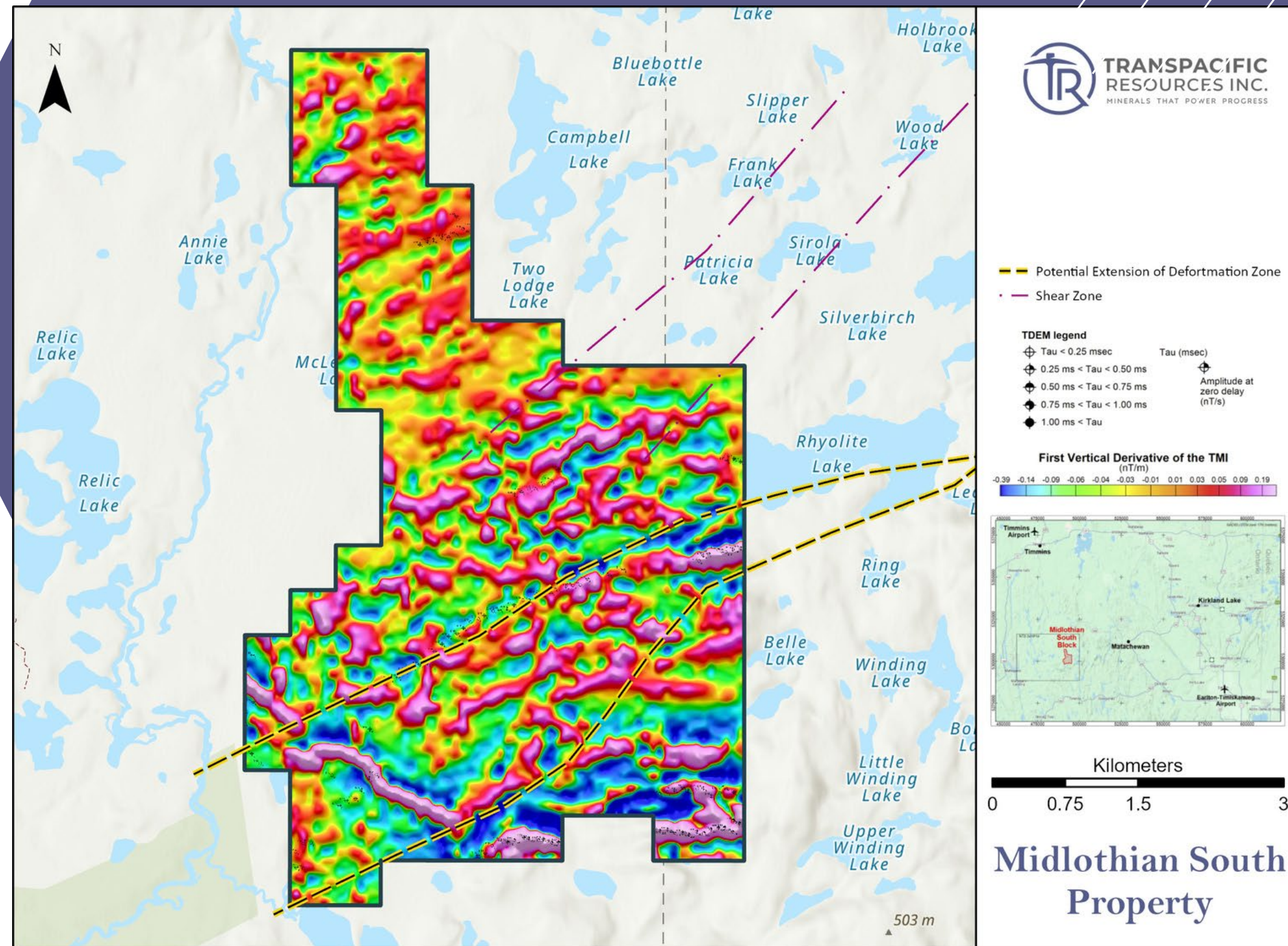


MIDLOTHIAN SOUTH

Exploration History

- Very little historic work; central and west section is under explored
- Most of the historic work has focused on the strong E.M. conductors where three holes have been drilled by 2 companies.
- All the holes encountered massive pyrite with graphite intervals ranging 4 to 14 ft. in length with low gold values.
- Currently, the Midlothian Lake area is being explored for nickel with focus on ultramafic and mafic intrusive rocks like those found on the property.
- Approximately 600 m east of the property, a drill intersection of 0.25% Ni across 25.7 ft (7.8 m) occurs in a peridotite sill which extends onto the property.

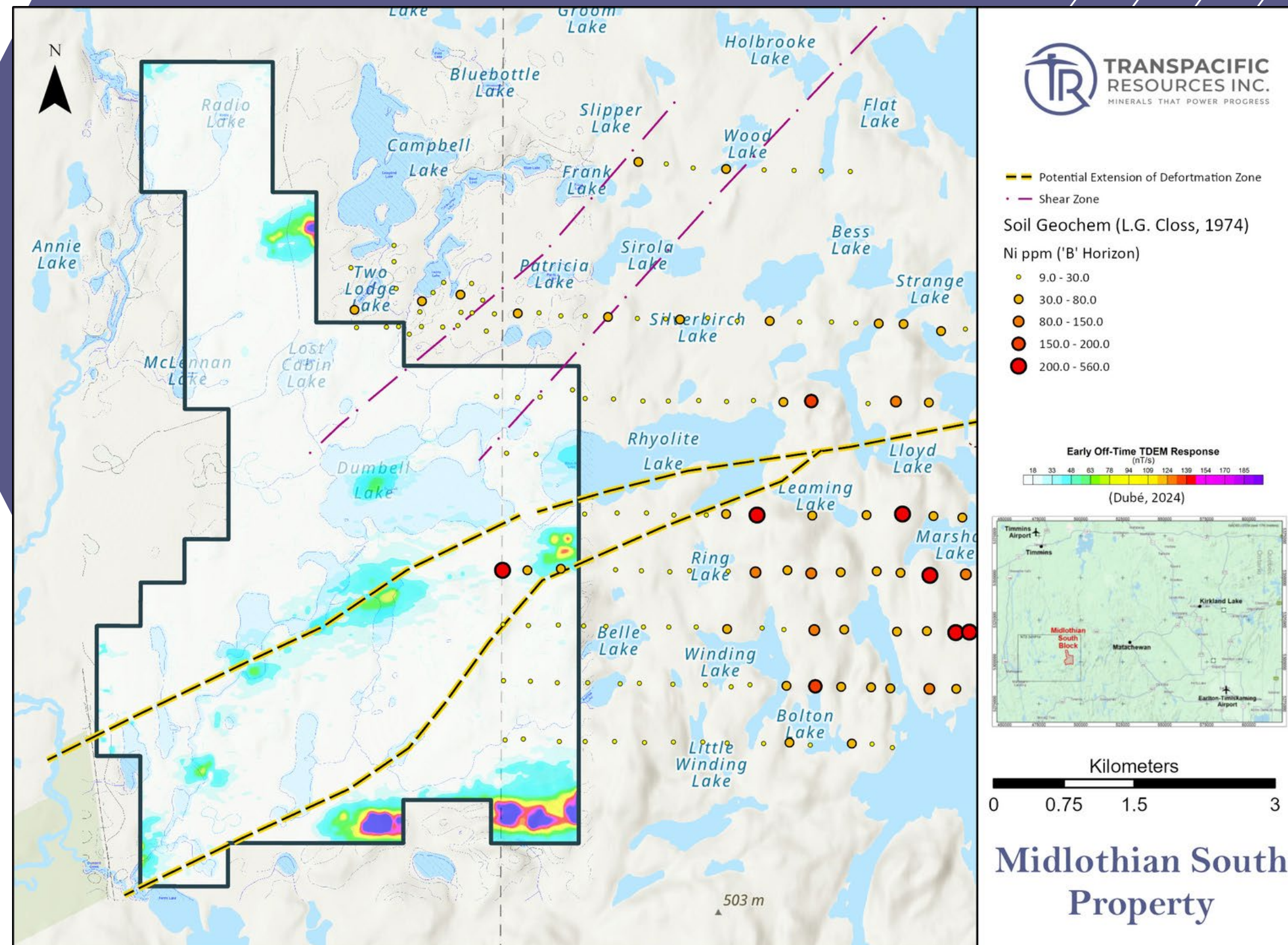
Transpacific completed an airborne magnetics and EM survey in 2024.



MIDLOTHIAN SOUTH

Exploration Potential

- Regional structures and associated splays host critical metal and large-scale gold mineralizing systems.
- Exploration programs aim at extending the Ni-mineralization from the adjacent claims and to make a new critical mineral and precious metal discovery along the CLDZ.
- Historic nickel-in-soil anomalies remain untested and open ended.

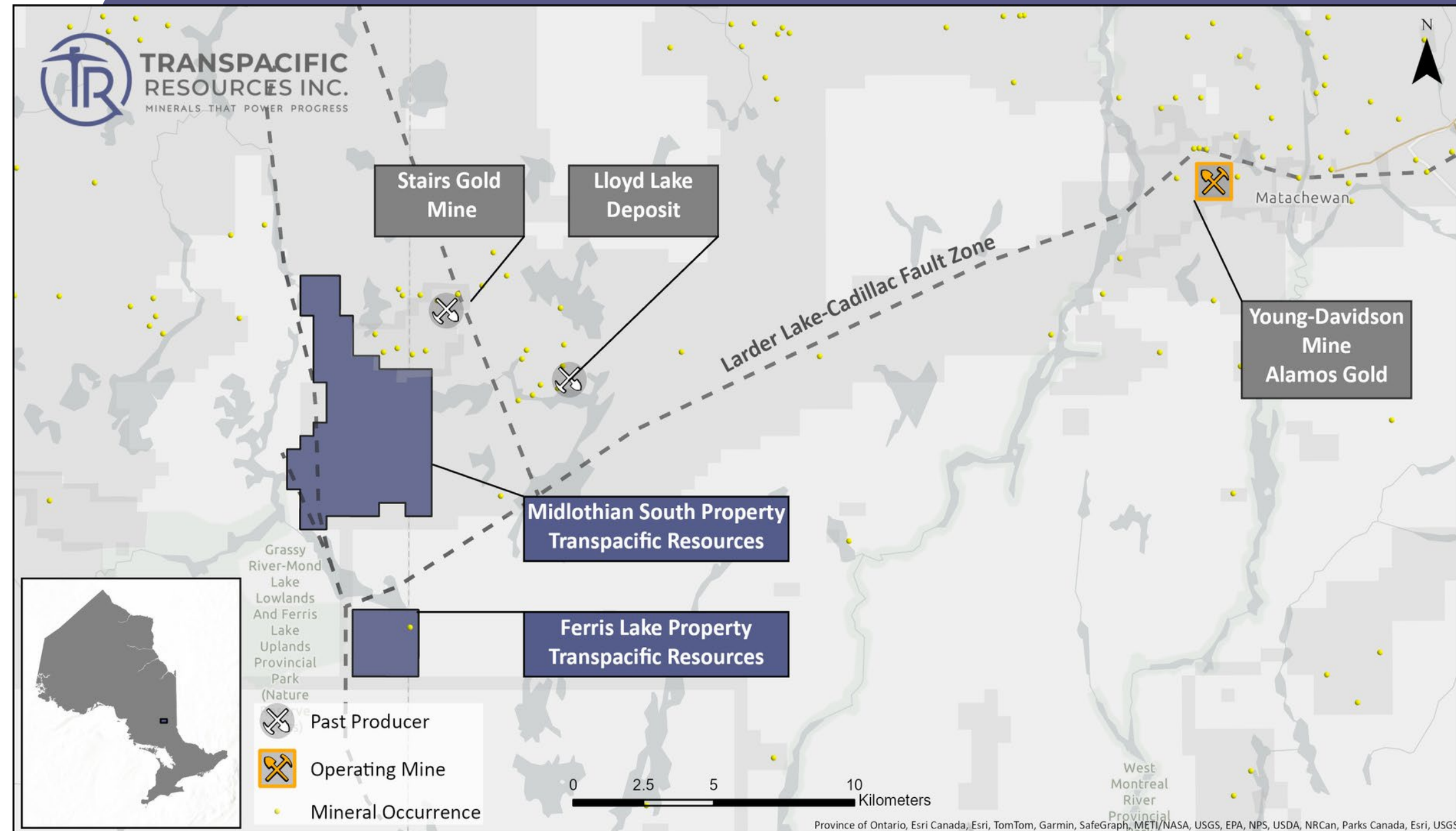


FERRIS LAKE

Commodities of Interest: Ni, Cu, Co, Pt, Pd

Location: 75 km SSE of Timmins, 30 km NW of Gowganda, north-northeast of Shining Tree, Ontario

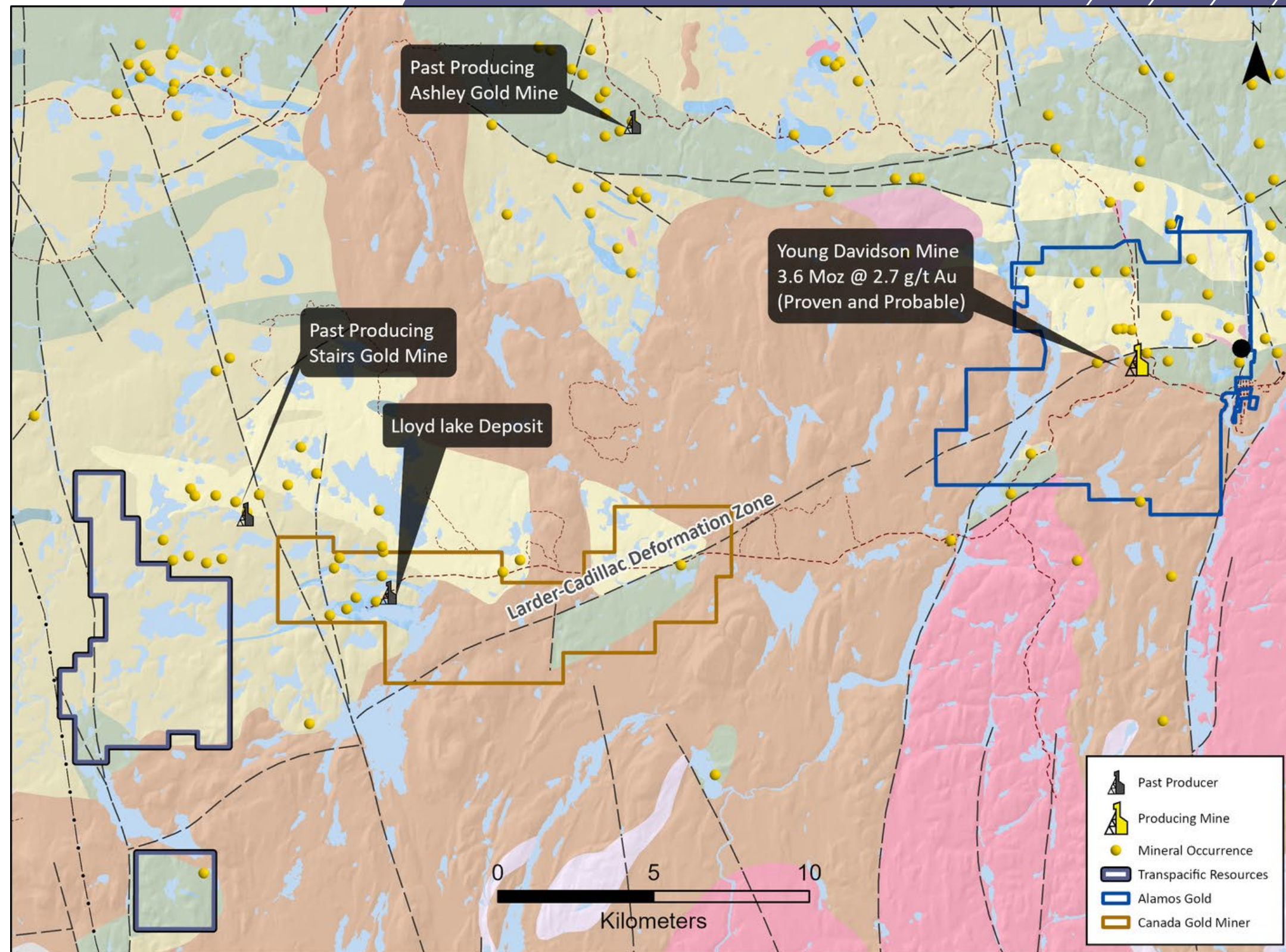
Size: 36 claims, ~542 ha. Claims are situated within Raymond township.



FERRIS LAKE

Geological Setting

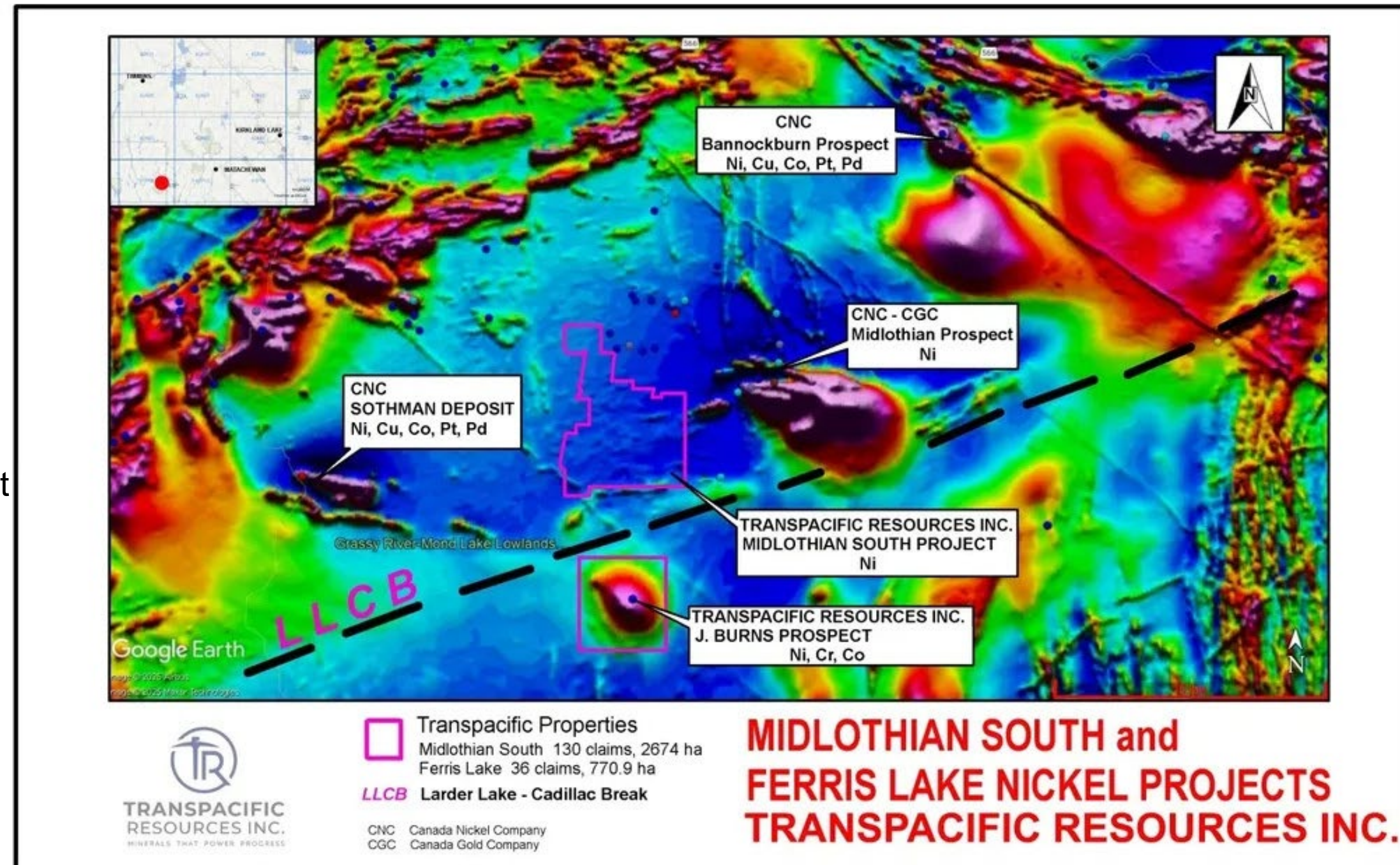
- Underlain by Archean Tisdale assemblage of mafic to felsic metavolcanic rocks, intrusions and lesser metasediments. The Archean basement is partially overlain by Proterozoic clastic metasedimentary rocks of the Huronian Supergroup.
- The area is cut by several north-south to north-northwest trending regional scale faults cutting both the Archean and Proterozoic sequences.
- A prominent west-southwest trending fault passing through Lloyd Lake and into Ferris Lake could be interpreted to be the southwestern extension of the Larder Lake-Cadillac break.



FERRIS LAKE

Exploration History

- Limited past exploration focused on VMS targets within intermediate to felsic volcanic host rocks with coincident EM conductors north of Ferris Lake.
- Work history dates back to 1965 consisting of diamond drilling, geophysical surveys, and assay work. Very few assays reported over the history of the area.
- In 1990, the area was targeted for magmatic Ni-Cu-PGE sulphides after an airborne magnetic survey revealed a large (~16km²), circular magnetic anomaly at the southeast end of Ferris Lake.
- In 1999, a single drill hole into the centre of this anomaly intersected more than 50m of massive dunite beneath 342m of Gowganda Formation metasediments. No further drilling was executed, and the basal contact of the intrusion was never tested for possible Ni+/-Cu-PGE mineralization. Historic sampling of the dunite confirms its ultramafic composition, and elevated nickel (avg. 2500ppm Ni).





**TRANSPACIFIC
RESOURCES INC.**
MINERALS THAT POWER PROGRESS

2025 Field Plans

Field of Dreams Property:

- Drilling 2 x 200m holes into the B -target to twin historic drilling, to establish depth of the body; determine the critical and precious metal inventory
- Prospecting and Mapping (Ontario and Quebec)

Midlothian South Property:

- Prospecting and mapping to ground -truth the 2024 airborne magnetic and EM anomalies

Ferris Lake Property:

- Preliminary prospecting and mapping campaign
- Re-sampling of historic drill core from the Ministry core library
- Undertake ore characterization on Ni -bearing samples from the historic drill core



INVESTING IN:

- A highly motivated and experienced management and geological team with a strong history of exploration experience in Canada
- The prolific mining history and mineral endowment of the Abitibi Greenstone belt
- Porcupine -Destor Fault and Larder Lake-Cadillac Fault and deformation zone: World -class exploration area with exceptional base and precious metal potential (Malartic Val D'or Cadillac Gold Camp, Kirkland Lake Gold Camp, Timmins-Porcupine Gold Camp)
- Additional Canadian exploration upside potential
- Moving forward towards listing on a Canadian exchange



WHY INVEST IN US

Location -Location -Location

- Jurisdiction is very mining friendly
- Accessibility (roads, trails, nearby infrastructure)
- Cadillac-Larder Lake Break & Destor-Porcupine Break

Management Team

- Expertise in technical and financial needs of the mining market
- Low General & Administrative costs

Company Model

- Multiple land packages to diversify commodity types
- 100% ownership
- Project generator model : build a portfolio of securities, royalties forming partnerships with other companies to fund exploration projects to reduce risk and increase the chances of discovery





**TRANSPACIFIC
RESOURCES INC.**
MINERALS THAT POWER PROGRESS

CONTACT US

Email

TranspacificResourcesInc@gmail.com

Website

www.transpacificresourcesinc.com

