



PRODUCT LINE CARD

**Norgas Metering Technologies, Inc.
Norgas Controls, Inc.
9840 Harwood Ct.
Fairfield, OH 45014**

**888-NORGAS-8 (toll free)
513-942-3600
513-942-0096 (fax)**

www.norgas.com





WATER METERS



SingleMag

Residential
Multi-family
housing, strip
malls, etc.
(single-jet)



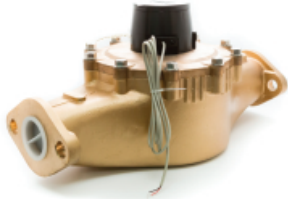
VersaMag

Residential
Multi-family
housing, strip
malls, etc.
(multi-jet)



MultiMag

Residential,
commercial, or
industrial.
LF Brass
(multi-jet)



PD-Mag

Residential, commercial, or
industrial. LF Brass, Positive
Displacement type



TM-Series

Commercial/Industrial
Turbine meter,
Woltman-type



Norgas Metering Technologies, Inc. offers a wide variety of water meters ranging in size from 5/8" x 3/4" to 20". Our meters are suitable for use in the residential, commercial, and industrial markets. All meters have a pulse output option for most remote metering applications. Whether you are sub-metering for billing purposes or simply monitoring water consumption, NMT has a water meter for you!

ACCESSORIES



**LF METER
COUPLINGS**



SPACER TUBES



FLANGE KITS



DIGITAL COUNTER & ENCLOSURE



GAS METERS



NG4

Multi-family housing, strip malls, etc. Indoor only, 211cfh max NTEP approved



NDM-15C-1.5"

Commercial and industrial applications up to 1,500cfh Positive displacement design.



NDM Rotary

Commercial and industrial applications up to 38,000cfh. Positive displacement design.



Norgas Metering Technologies, Inc. offers gas meters for some of the smallest jobs to some of the largest jobs. Like the NMT water meters, our gas meters are suitable for use in most residential, commercial, and industrial markets. Meter sizes range from our 3/4" 211cfh NG4 up to our 6" 38,000cfh ND-38M. All gas meters are available with pulse output for your remote metering needs.

GAS REGULATORS

NGR02

Internal relief
10-125 psig max inlet per orifice
1/2" - 1 1/4" NPT
2" wc - 5 psig outlet pressure
5,000 cfh max

NGR04

Internal relief
10-125 psig max inlet per orifice
1 1/4" NPT - 3" FL
3" wc - 3 psig outlet pressure
10,000 cfh max

NGR06

Internal relief
25-125 psig max inlet per orifice
1 1/4" NPT - 3" FL
2" wc - 7 psig outlet pressure
20,000 cfh max

NGR08

Internal relief
25-125 psig max inlet per orifice
1 1/4" NPT - 3" FL
2" wc - 7 psig outlet pressure
30,000 cfh max





GAS REGULATORS

NMT N5 Series Gas Regulator

KEY FEATURES

- Certified CSA 6.22/ANSI Z21.80 Line Pressure Regulators
- Vent Limiter Option
- Multi-position Installation
- Extended Corrosion Resistance
- 15 psig max operating pressure



Regulator Comparison Chart

This is a guide only, it is best to contact Norgas for accurate sizing.

ITRON	FISHER	SENSUS	AMERICAN	MAXITROL	NORGAS
B42	HSR	496	1213	325-3, -5, -7	N5A / N5B / NGR02
B31	S102	143-6 / 143-8	1813C	325-9	N5A / N5B / NGR02
B57	S102	143-6 / 143-8	1813C	–	–
B34S	S202	243-8 / 243-12	–	325-9 / 210D	N5C / N5D / NGR04
B34	S302	243-8 / 243-12	1813B	210D / 210E	N5C / N5D / NGR04 / NGR06
B38	–	–	1813B	210E	NGR06 / NGR08
CL34	299	243RPC	2002	–	NGR06 / NGR08 / NGRB
CL38	–	–	–	–	NGR06 / NGR08 / NGRB
RB1700	133L, H	121 / 122	3000	–	NGR06 / NGR08 / NGRB
RB4000	1098EGR	441 / 461	3000	–	NGRB
B35	627R	046	–	–	–