

# GREEN BAY HIGH SCHOOL

INTERNATIONAL PROSPECTUS



# WELCOME

**Green Bay High School is a great place to go to school.**

We have excellent academic achievement across a broad range of subjects and our focus is on creating the best environment and opportunity for our students to achieve. Our school has excellent facilities and well-resourced faculties which means that we are able to provide our students with a rich and exciting physical learning environment.



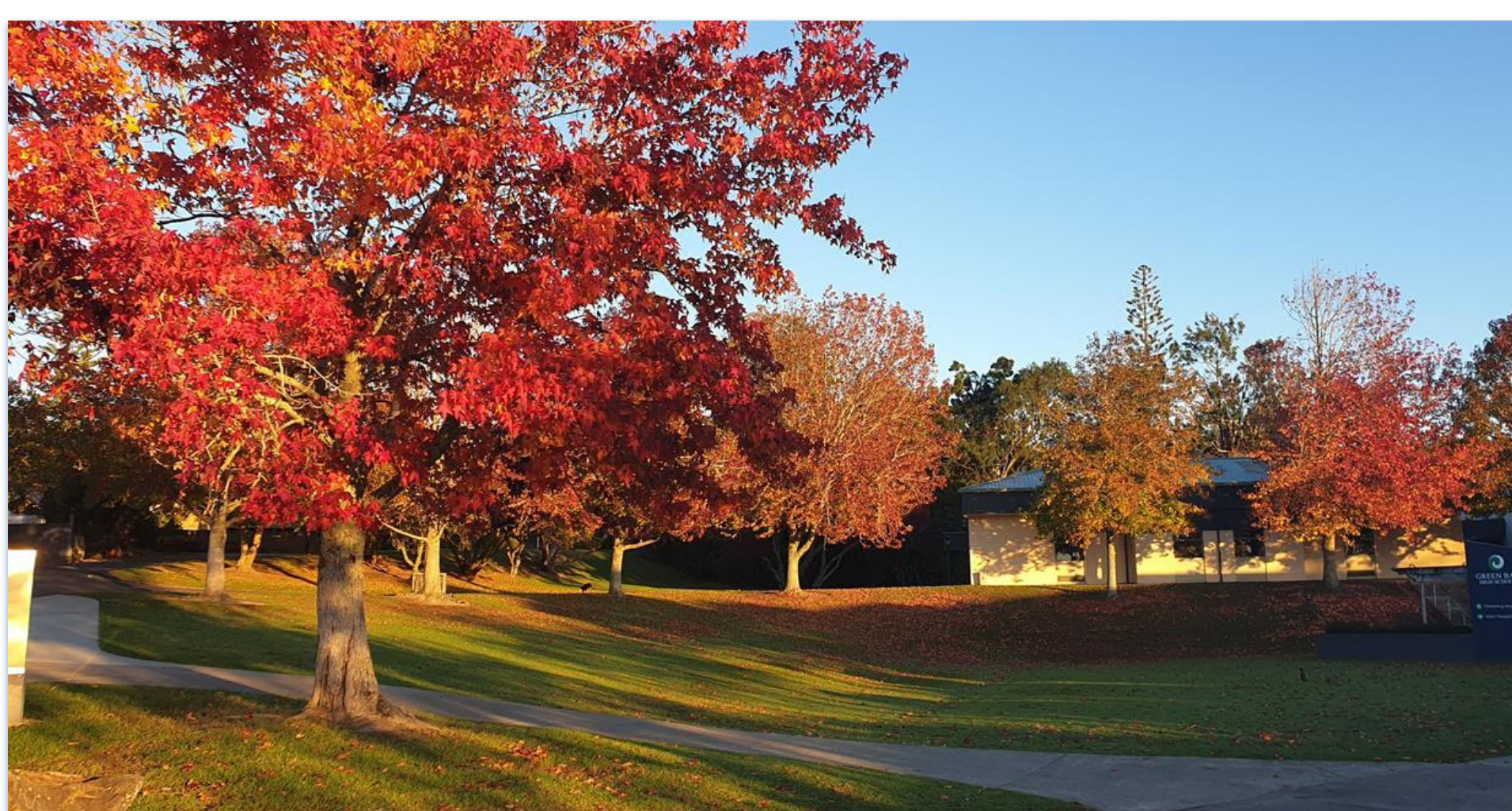
Green Bay High School prides itself on delivering a broad curriculum which offers a range of traditional subjects alongside a personal approach to learning. Our teachers know their students and make time to connect with them, supporting each student to achieve their goals. We believe that these strong relationships make a huge difference to the success of all our students.

We warmly welcome you and your child to become part of the Green Bay High School community.

Ngā mihi nui

Fiona Barker  
Principal

<b>Type of School:</b>	Co-educational	<b>School Level:</b>	Year 9 - 13
<b>No. of students:</b>	1350	<b>International Students:</b>	50
<b>Students from:</b>	Brazil, Cambodia, Chile, China, France, Germany, Italy, Japan, Korea, Peru, Thailand, Vietnam		



# LOCATION

Green Bay High School is located a 20 minute drive from both downtown Auckland and the International Airport. It is also on the edge of a large regional park called the Waitakere Ranges which boasts miles of black sand surf beaches and hectares of native forest.

We have the best of both worlds with easy access to the city on public transport as well as bush walks and beautiful beaches in our own backyard.



The local community is art focused and nearby are theatres, dance schools, and art galleries, which are easily accessed by students. There is a local market on in the weekends featuring local artisanal products.

In addition, there is a world class golf course right next to the school which provides opportunities for both experienced golfers and those students who want to try something new.



# STUDENT SUPPORT

Student well-being is a focus across the school and a strong pastoral care system is essential. At Green Bay High School we have a range of support systems in place to make sure that students are able to access help when they need it. There are four staff dedicated to the pastoral care of our international students. As well as the International Dean, we also have a Dean at each year level, Form Teacher's assigned to each form class and trained counsellors available when necessary.

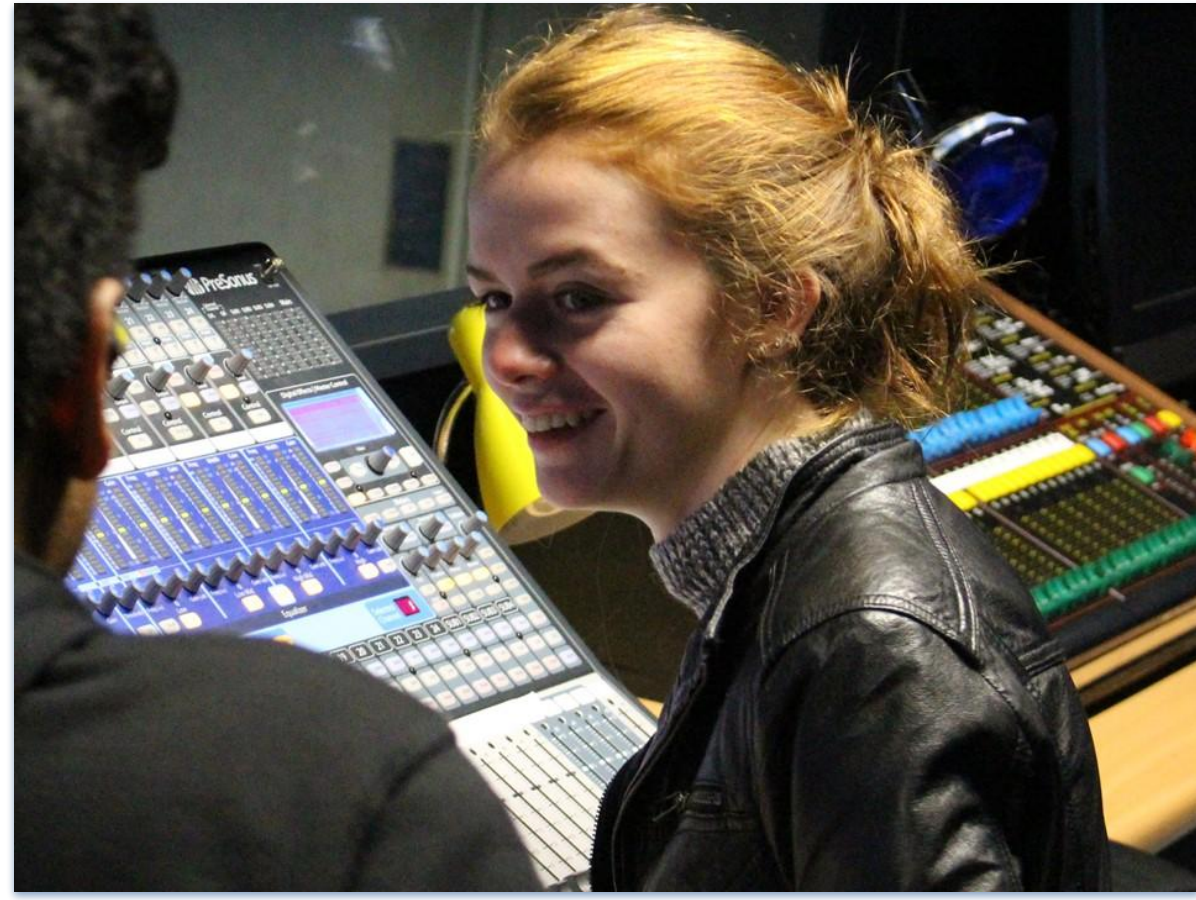
A comprehensive orientation program is run for all new international students. This gives them time to set up their devices, meet the international staff and become a little more familiar with the layout and routines of school.

New students are also assigned a school ambassador - these students have been trained and are keen to assist our new international students integrate into school life.

The International Dean works closely with the students to ensure they are on track to meet their goals. We also liaise with the Careers Department to determine the best pathway for each student.



# LEARNING



We pride ourselves on our modern and beautiful learning environment. Teaching is relevant, visible and inquiry based. Students are taught to solve real life problems and work collaboratively. They enjoy the range of subjects on offer.

ESL support is available to those students who need it.



Our pass rates are consistently 10% higher than the national average across all year levels. Some of our international student graduates go on to study at Auckland University and AUT. Others return to their home countries.

We encourage students to make the most of the opportunities on offer by learning something new, joining a club or travelling around the country. There is so much to do!

Scan the QR code to check out a flyover of our school!



# HOMESTAY

At Green Bay High School we understand the importance of a happy and successful homestay experience for students. Homestay families are chosen carefully and monitored by the school. Most of our families live within walking distance of school. Many of them have been hosting for over 20 years and now have children from all over the world.

We have a dedicated Homestay Coordinator who offers support to both homestays and students. Students have their own room and will be provided with three meals a day.

Staying in a Homestay gives students an unforgettable opportunity to experience a new culture while also improving their English.



I learned that family is not only defined by blood. I learned that language is only a small part of understanding others. I learned so much about many different people and cultures, but the most important thing I learned here was:

**He aha te mea nui o te ao?  
Māku e kī, he tāngata, he tāngata, he tāngata.**

**What is most important in the world?  
I will say, it is the people, it is the people, it is the people.**

They say that is the price you pay when travelling: You will never be completely home again because part of you is always elsewhere. They are right. But I would not do a single thing differently.

Thanks Green Bay High School for an amazing time, your support & your love.

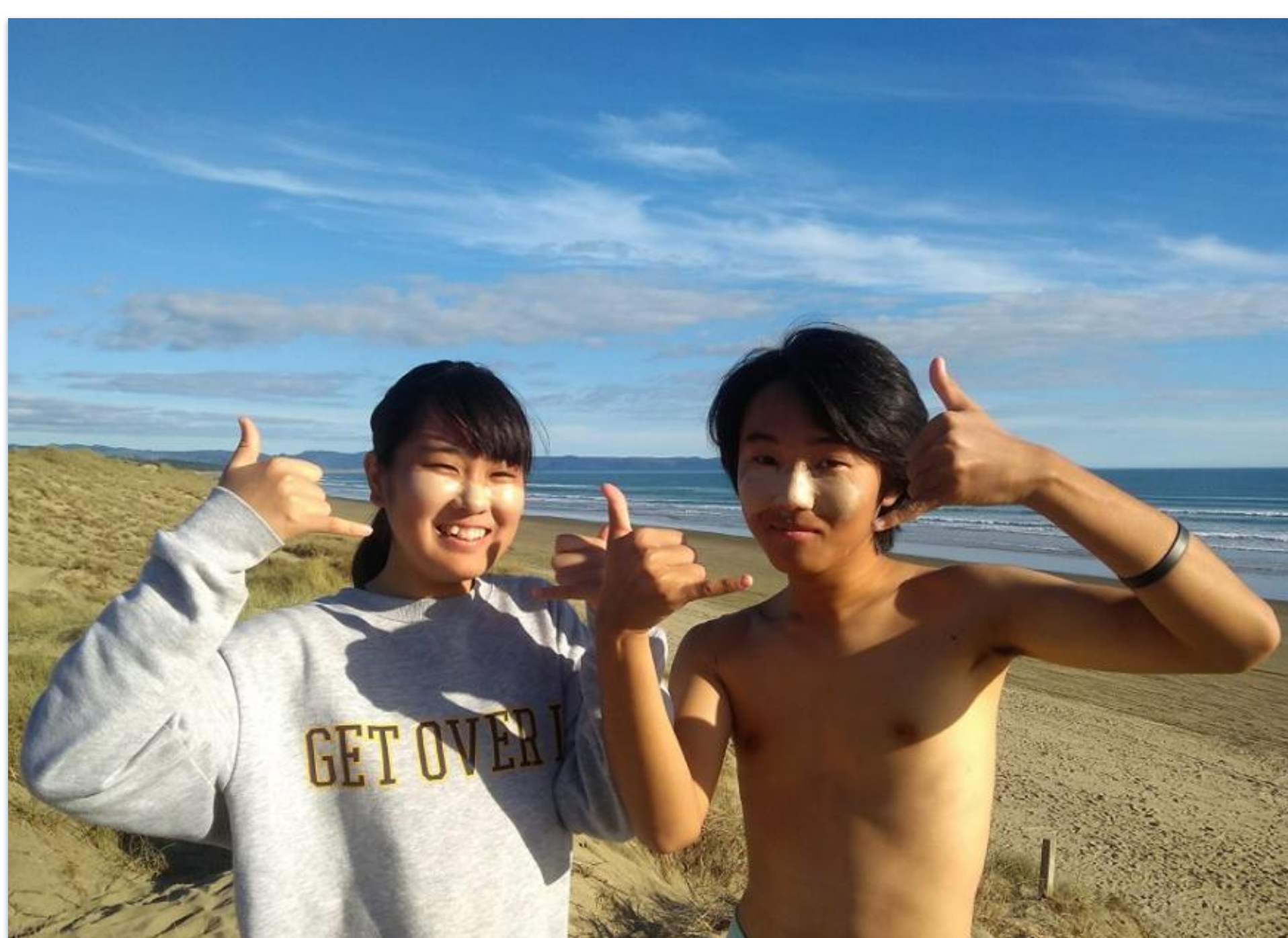
-Ruth Ebenbichler (Austria)



# NEW EXPERIENCES

Supporting students to be well-rounded members of a community starts with broadening their horizons through opportunities outside the classroom. We offer a wide range of sporting co-curricular opportunities which include the main codes; football, netball, rugby, hockey and basketball as well as more niche sports such as orienteering and golf.

Our performing arts faculty offers students the opportunity to take part in our yearly show, dance group, drama competitions and various musical ensembles.



# CONTACT

*"The school's shared vision of "learning that is innovative, individualised and connected" is underpinned by the values of excellence, courage, respect and responsiveness."*

- New Zealand Education Review Office



## For further information contact:



Katrina Piezzo, The Director of International Education



PO Box 80002, Green Bay, Auckland, New Zealand



+64 9 817 8173 ex 252



[international@greenbayhigh.school.nz](mailto:international@greenbayhigh.school.nz)



[www.greenbayhigh.school.nz](http://www.greenbayhigh.school.nz)



<https://www.facebook.com/gbhs1973/>

