

2025 Board

President: Karen Pfeifer
618-978-7327
karen.pfeifer@charter.net

Vice President: Denise Gerstung
Secretary: John Hammons
Treasurer: Barb Reed
Leslie Barnes
Joan Oakley
Carol Savage
Kathy Orf

Check us out on
Facebook and Instagram!

St. Louis Calligraphy Guild

minuscule february 2025

Celebrating 45 years

PRESIDENT'S letter

It's 2025 and we welcome in 45 years of the St. Louis Calligraphy Guild. Now that the snow is receding...not sure it is really melting yet but the sun is helping, let's get out to the Guild's Thursday nights at PRPC on Sappington and have some fun.

Welcome to the newbie's who have joined us the last couple of months. We hope you all continue to visit us on Thursday nights. Our Thursday night meetings are free and open to the public. So bring a friend and don't forget sign up for our workshop in March.

Please look over the calendar...we have a date in April. We will meet on Thursday April 24th for Folded Paper Books. We can use our recently created paste paper from the March workshop. Speaking of the Workshop, this is a great one to jump in and have fun. Nothing stressful just paint, paper and creativity. John, Kathy and Denise have been planning new techniques to teach us.

On to June and the St. Louis Pen Show. Joan Oakley, will be the contact person this year. She has volunteered to coordinate our volunteers. This is another fun thing to do in STL. We just write names for a short shift and then enjoy the pen show. Thank you Joan.

I would also like to welcome back to the board Kathy Orf. Kathy has previously served on the board and as president before and has continued to be our minuscule editor for many years. Thank you Kathy.

We have also moved our post office box. It is now more convenient for mail pick up ...the new address is:

St. Louis Calligraphy Guild
P.O. Box 31083
St. Louis, MO 63131

Don't forget Carol Savage, has been doing some study groups and they are all having a great time practicing their skills on Monday night. The Semi-Annual Retreat comes back this year. We will again be at Todd Hall Columbia, IL. Dates are October 17 to 19. Save it on your calendar now... more details will follow. It is a great time to get away, and concentrate on CALLIGRAPHY!!!!

Karen



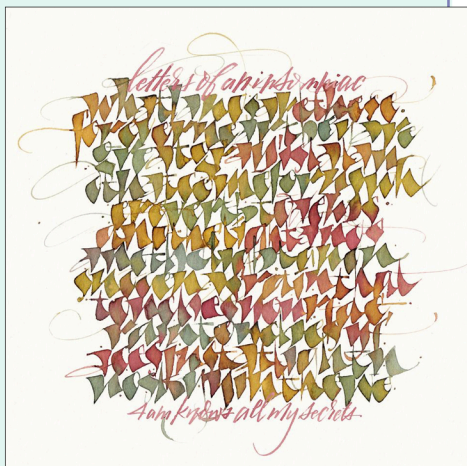
Calligraphy Study Group

LET'S PLAY TOGETHER!

What happens when a few guild members, their friends and guests gather in one place to practice their evolving lettering skills, to learn alphabets, to ask questions and try new ways, to experiment with each other's pens and inks and papers? The best answer is to come experience a study group and see for yourself as we learn together. Get started on a fun journey exploring the possibilities of writing.

What do you bring? Bring a friend, new people welcome! Also, whatever tools (pens, inks, paper, instructions, etc.) that you have. Bring your questions, and challenges, your eagerness to learn and experience success. Bring your fresh energy and excitement to be with like-minded lettering lovers. Don't be shy! Just show up and try! 12820 Weatherfield Dr. 63146 See dates & times in calendar.

Keep abreast of our evolving schedule posted on our calendar on the Events page of our guild website <https://stlcalligraphyguild.org/> submitted by Carol Savage

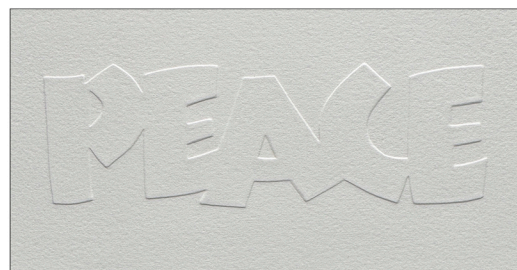


art by Sue Greenseth

Workshop review

BY LESLIE BARNES

Our fall 2024 workshop was headed by Sue Greenseth. (We will see her again as her daughter lives here in St Louis!) On Saturday we studied Neuland. Neuland is a majescale hand that was developed by Rudolph Koch-originally it was a typeface, but calligraphers have adapted it to a broad edged pen. There are many versions of Neuland and Sue showed us one and then a lower case Neuland. Most of us used a Parallel Pen. We worked on Neuland all day Saturday. On Sunday, Sue showed us dry embossing-designing of word with letters touching. We then transferred it to a firm paper-most of us used a manila folder and cut it out, saving our counters. We attached tracing paper to it, placed the counters and, using multiple embossing tools from large to small, embossed our word. We had amazing results. I actually designed a word to use as a Christmas card, but didn't get it done. I have supplies for next year! It was great to be together again for an in-person workshop. We were in a new space-the art room at Webster Groves Presby. Church. The room is at the back end of the building, with an elevator so we can get supplies up without going up the stairs.



by John Hammons

FALL Workshop

SAVE THE DATE!

September 27th and 28th, 2025

Sue Greenseth returns to St. Louis to teach "Mid-Century Pen Moves"

Travel back several decades and learn these unique and whimsical alphabets that became popular in the 1970s. These hands greatly influenced many calligraphers at the time, but they are just as relevant today as they were then.

In this workshop, the focus will be to move the pen angle to create interesting letter strokes. Two alphabet variations will be introduced, and students will have time to practice letter spacing. Through study and writing these unique shapes, students may be inspired to take their own lettering to a new level.

Location and further details to follow.



Workshop

Paste Paper Workshop

Cost: \$75 member; \$105 non-member

Deadline for sign up is March 15th

March 29-30, 2025 9-5

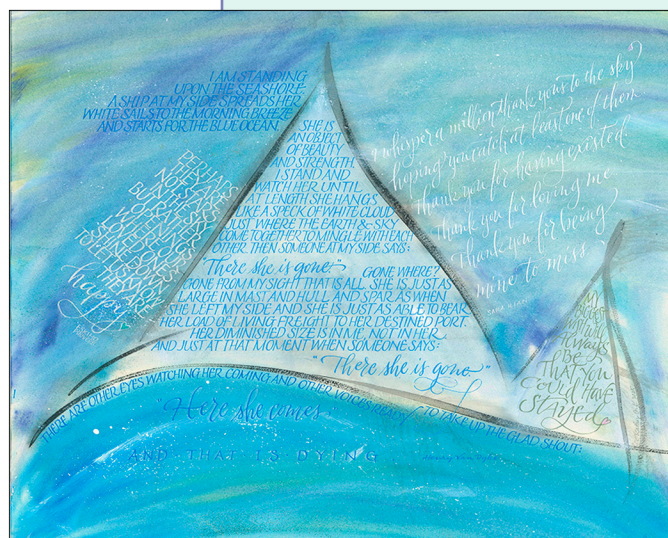
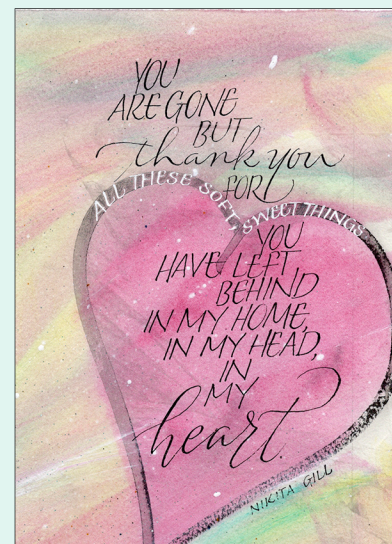
Webster Groves Presbyterian Church, 45 W. Lockwood, 63119

(Parking in the back of the church in a lot in Moody Ave. Entrance is from the church parking lot. Look for the covered entrance)

This workshop will be comprised of paste paper techniques, taught by members John Hammons, Kathy Orf, and Denise Gerstung. Many of us have learned paste paper by the “play” approach. That’s a great approach to learning but what if we had some techniques and patterns that can be taught? Kathy has a technique she has used for years in her piece a day calligraphy. John found some great techniques with layered effects. Denise has been doing some studying with making lines and using some pottery tools and different paper. And, if that’s not enough, paste paper is just plain fun.

Supplies:

- We will provide full sheets of Arches Text Wove that may be purchased @ workshop
- In addition to Arches, we suggest you bring your “unsuccessful” paste paper you might want to give a new layer
- Any interesting art paper or wrapping paper you’d like to try painting
- We have paint: both tube and bottle in many colors but feel free to bring anything you might want to try (label what belongs to you)
- We have tools you can try but again bring any of your own
- 4-6 Small containers with lids (yogurt size)
- Foam brushes, sponges, plastic spoons
- A sheet of plexiglass is very helpful! (Home Depot) mine is 18x24
- Spray bottle for water; paper towels, baby wipes
- 2 large Containers one for rinsing tools and one for clean water
- Sumi ink, small bowl, basic brushes for ink
- Filbert brush #8 (Michaels or Dick Blick)



Above: Kathy Orf paste paper/art

Retreat

Semi-Annual Members Retreat

October 17, 18, 19, 2025.

Friday evening to Sunday mid-morning

Todd Hall, Columbia, Illinois

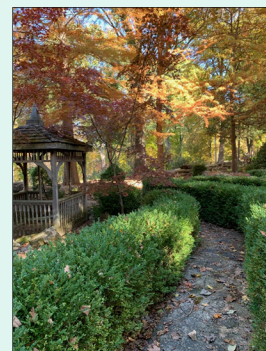
<https://www.toddhallretreat.org>

The guild has held a semi-annual fall retreat since 2004. This is a time to get away with like-minded members of the guild and work on your personal projects. There are group activities as well, beginning on Friday evening with a paste paper party. On Saturday, there is time for self-directed work and often one or two members will share a small group project or instruction. If you are struggling with a project or a calligraphic hand, this is a great time to seek help from fellow members with years of experience. It is a great time to strengthen friendships and get to know others in the guild.

The fun starts on Friday evening, with members arriving around 5 or 6 PM, after dinner on your own. The guild pays for the large meeting room, Cranmer Hall. Members pay for two nights lodging, \$130 (shared room at \$65/night). We have typically purchased meals at the retreat center (breakfast, lunch and dinner on Saturday and breakfast on Sunday) for a meal cost of \$55.50. Total cost for the retreat is \$185.50. There is a minimum number of registrants required in order to purchase meals so we will know more about meals closer to the retreat. Our meeting room has a refrigerator, microwave, coolers with ice, coffee and hot water for tea but no full kitchen facilities. We always bring snacks to share and our own beverages.

Registration deadline: September 15th w/ room payment of \$130 due @ that time.

Be sure to take our Paste Paper Workshop in March and continue your exploration of this medium at the retreat!



membership

Please pay your \$30 annual membership each September...
by check made out to
STL Calligraphy Guild
either at the Sept meeting or
by mail to:
Barb Reed, Treasurer
5733 Lindenwood
STL 63109

Or via PayPal on our website at
stlcalligraphyguild.org



June STL Pen Show

Volunteers Needed for the St. Louis Pen Show

The St. Louis Pen Show will be held at the Sheraton Westport Chalet Hotel this year on June 28-29, 2025. Members of the St. Louis Calligraphy Guild have volunteered over the years at a booth, lettering names on bookmarks & sharing information about our organization for interested visitors. It has been a great opportunity to help spread the joy of calligraphy and find potential new members!

This year, volunteers are needed on
Friday, June 28th from 11:00 a.m. to 6 p.m.,
Saturday, June 29th from 9:00 a.m. to 5 p.m.
and Sunday from 10:00 a.m. to 3:00 p.m.
If you are interested in helping, please contact
Joan Oakley at jepoakley@gmail.com.
Please provide your name, and the date and
time you are available, along with your phone
number. A final schedule will be sent to
interested members by the first of June.
If you have any questions, please don't
hesitate to email Joan.

calendar

spring 2025 thru fall 2025

February 18, 2025 Study Group drop in 5 - 9 pm

@ Carol Savage's 12820 Weatherfield Drive, more details page 2 sidebar

February 20, 2025 Meeting, 7 pm, Envelope Design/Addressing the Problems

Providence Reformed Presby. Church, 9124 Sappington, lower level in back

February 25, 2025 Study Group drop in 5-9pm see above

March 11, 18, 25, 2025 Study Group drop in 5-9pm

March 29-30, 2025 Paste Paper Workshop 9 to 5 both days

Webster Groves Presbyterian Church art room \$75 for the weekend
plus cost of paper; details on page 3

April 8, 15, 2025 Study Group 5-9pm

April 24, 2025 Meeting, 7pm, Use your paste paper!

Folded-paper books and more, Providence Reformed Presby. Church

May Field Trip, date, time and topic TBD

June 27-29, 2025 STL Pen Show Volunteers needed! Info in sidebar

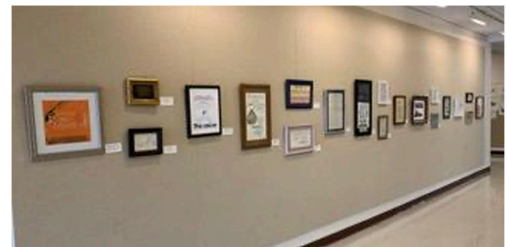
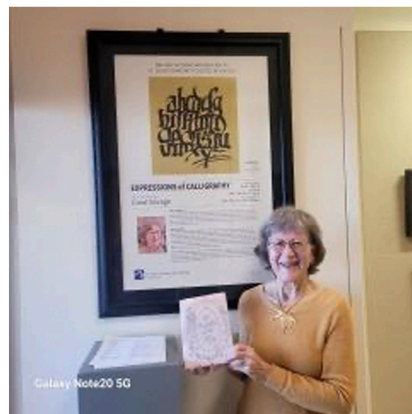
July 7-12, 2025 IAMPETH, Norfolk, VA

September 26, 2025, Annual Meeting & 45th Anniversary Celebration

September 27 & 28, 2025 Fall Workshop

Mid-Century Pen Moves with Sue Greenseth, see pg. 2, more info to come

October 17-19, 2025 Guild Retreat, Todd Hall, see page 3 for details.



Member Carol Savage's calligraphy was featured in a one woman exhibit last November in the Saint Louis Community College Art Gallery. She taught a class there in conjunction with the calligraphy exhibit. Guild members gathered at the closing reception.