

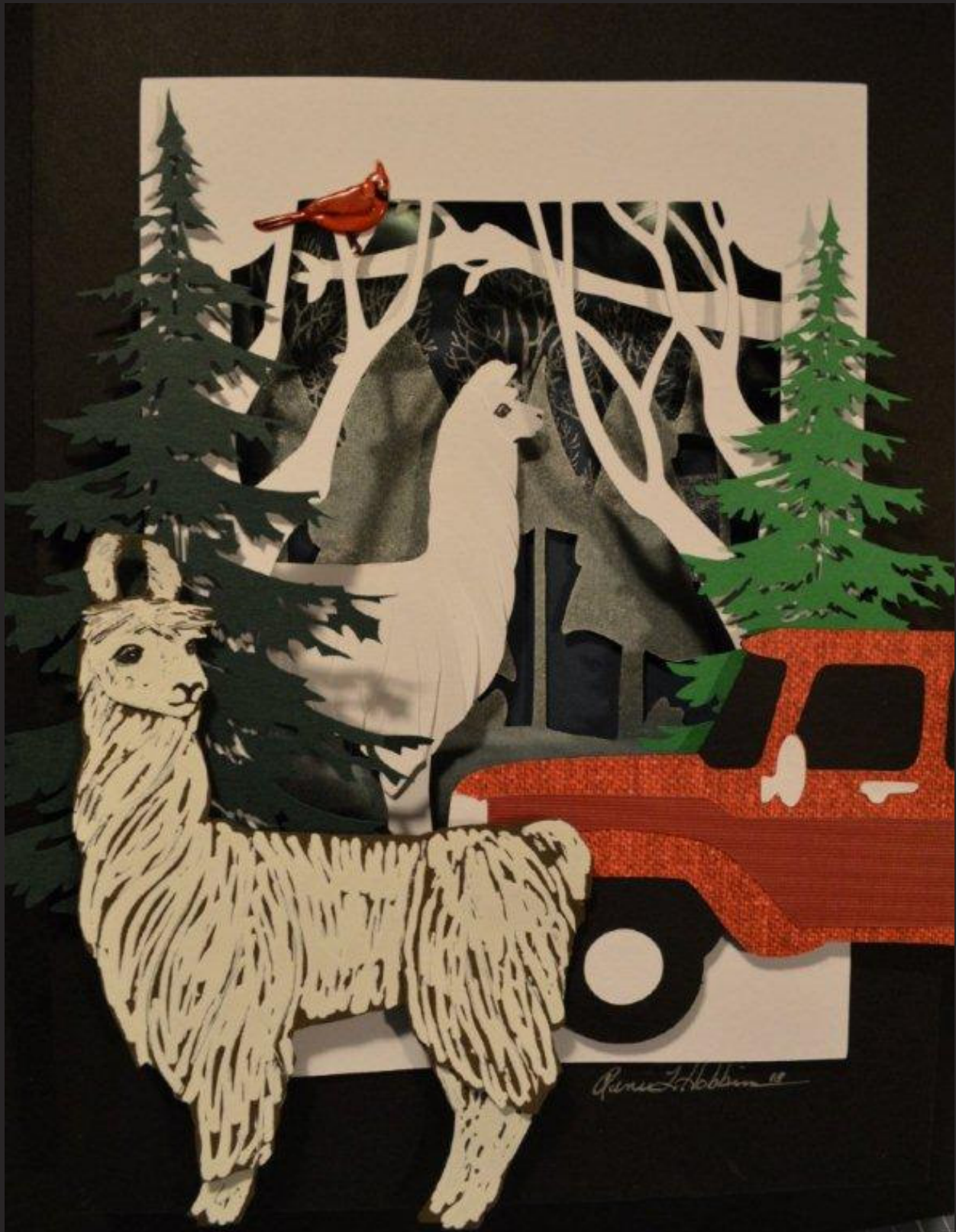
Llama Living

Hear What All The Humming Is About...

December 2018

Michigan Llama Association

Vol. 23, Issue 4



Contents

Llama Living



517-857-4626

GRJax7@springcom.com

- 6 Election Meeting
- 10 Marty's Corner
- 16 MLA Summary Balance Sheet
- 22 Calendar of Events 2019

- 3 Thank You (Don Topliff)
- 7 2018 Humm Dinger Award Winner
- 8 MLA Letters
- 9 Scholarship Winners Update
- 13 2018 MLA Scholarship Recipient
- 16 ILR Show Results: Lamafest 2018
- 19 ALSA Show Results: Lamafest
- 21 Winterizing Your Llamas

Special thanks to Renee` Hobbins for the great artwork on the cover of this issue of Llama Living. For those of you who receive the hard copy of Llama Living, check out the online color version of the cover if possible.

Michigan Llama Association
Web Site - www.michiganllama.org
Facebook Page - Michigan Llama Association

Season's Greetings



Bittersweet Farm
Suzanne Hockin Frambes
Ken Frambes

Next Deadline Llama Living

February 15, 2019

Thank You

The MLA would like to extend a special thanks to Don Topliff for the many years that he served as superintendent at Lamafest.

Don turned in his resignation to the Board at the end of this year to pursue other interests, but is more than willing to mentor the next generation in running the show for 2019.

Again, thanks Don for volunteering as superintendent and keeping Lamafest at the Pavilion and sitting on the Board.

2018 MLA Board

President	Corky Dubois	616-902-2382
Vice President	Gary Surratt	517-457-3524
Secretary	Sheila Miller	517-645-2719
Treasurer	Pat Schneeberger	517-627-6562
Youth Representative	VACANT	
Immediate Past Member	VACANT	

BOARD OF DIRECTORS

Year one of two	Dave Thompson	616-902-2382
Year one of two	Bev Surratt	517-547-3524
Year two of two	Don Topliff	517-655-5988
Year two of two	Bev Souva	989-856-3461

COMMITTEE CHAIRS

Hillsdale Show	Tim/Stephanie Douwsma ..	574-606-6183
Lamafest	Don Topliff ..	517-655-5988
Library	Gary/Bev Surratt ..	517-457-3524
Marketing	Renee` Hobbins ..	231-228-6128
	Julia Tarsa	
	Sarah Wolf	
Membership	Pat Schneeberger ...	517-627-6562
Mid Michigan Show	Dave Thompson ...	616-606-6183
Newsletter	Suzanne Hockin Frambes ..	517-857-4626
Nomination	Jerry Miller ..	517-645-2719
Scholarship	Corky Dubois ..	616-902-2383
Spring Fund Raiser	Annette Aldrich ...	517-675-7705
Youth/Youth Fund Raiser ...	Bev Souva ...	989-856-3461
Youth Show	Corky Dubois ..	616-902-2382
Web Master	Lifelines Media	
Michigan Fiber		
Industry Coalition Liaison ..	Sheila Miller	517-645-2719

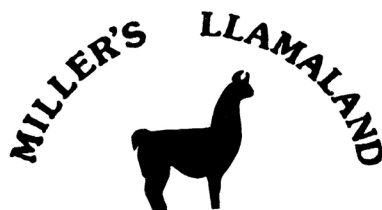
The MLA would like to thank Don Topliff for serving on the Board for the last few years. Tim Douwsma was elected at the November meeting to take his place in 2019. Bev Souva was reelected to serve another two years beginning in 2019.

There are several positions (listed above) that are still vacant. If you are interested in serving in any of these positions, please contact Corky Dubois. Lamafest 2019 will be run by a committee with a point person assigned. If you are interested in volunteering for Lamafest 2019, please contact Corky Dubois.

May your holidays be joyful and safe!

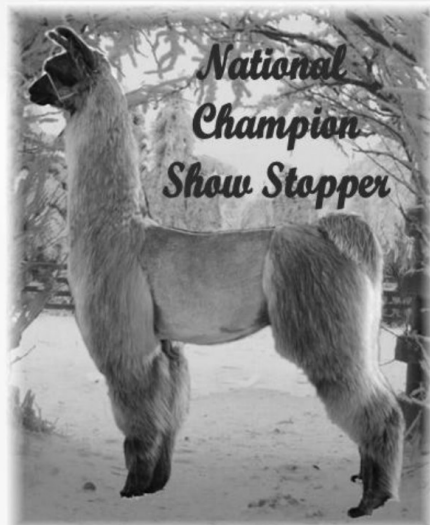
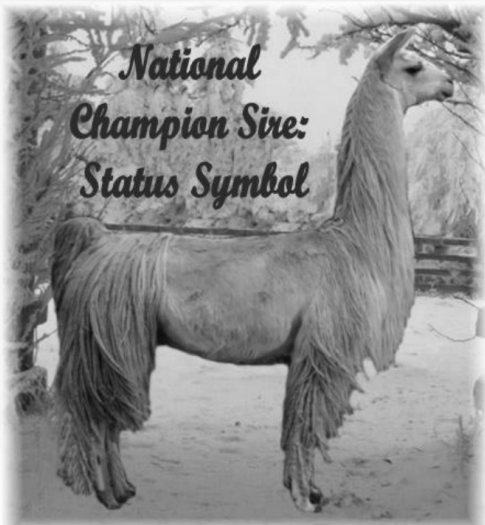
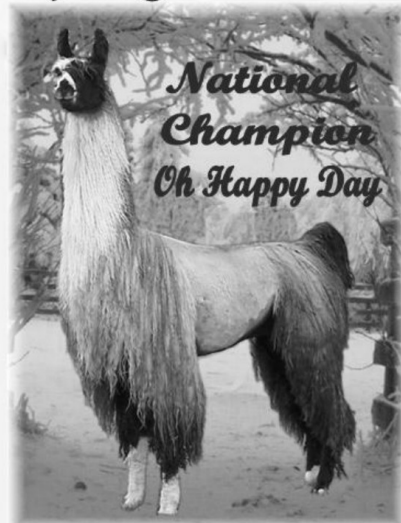
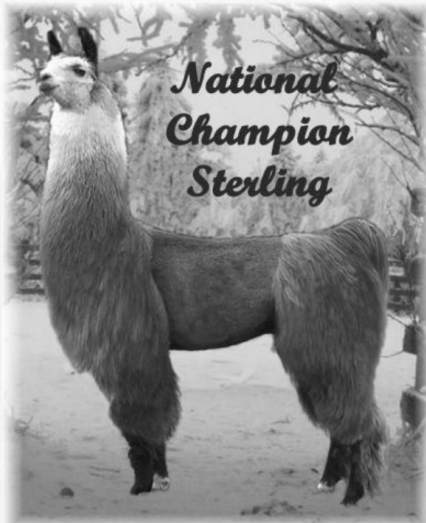
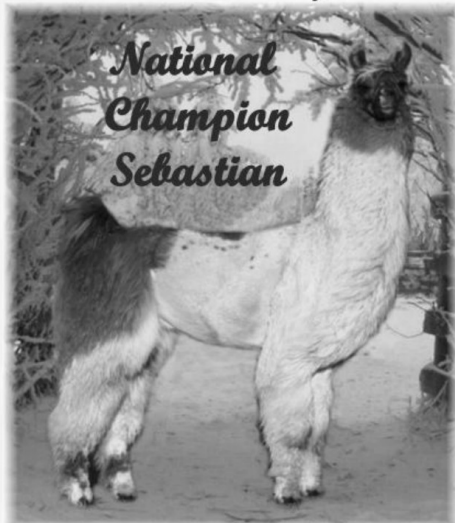


From the Staff at Llama Living.



Jerry & Sheila Miller
4705 Llama Lane, Pottersville, MI 48876
517 645-2719 ~ millerlama@aol.com

Dominant, Prolific Sires are needed in today's highly competitive market! We help to assure their Beautiful Offspring with an array of Show Champion Females for their court! Offspring Available!



May your Holiday Season be filled with Lots of Love Happiness and Peace



We have Puppies Available Now! All Colors! Breeder's of Little Aussies for 25 yrs!

National Champion Llamas & Little Aussies
Lloyd & Tami Lash H: 517.467.2709 www.LashesUniqueAnimals.com

November 17, 2018 MLA Board of Directors/ Membership/Election Meeting

Submitted by Sheila Miller, MLA Secretary

The MLA annual election meeting was held November 17, 2018, in Addison, Michigan. We all brought a dish to pass and had a very nice lunch before starting the meeting. Thanks to the Kiwanis Club in Addison for allowing us to hold our meeting in their facility.

President, Corky Dubois, presided and called the meeting to order at 12:34 p.m.

Members of the Board present were Gary Surratt, Vice President; Corky Dubois, President; Sheila Miller, Secretary; Patricia Schneeberger, Treasurer; Beverly Surratt, Board Member; and Dave Thompson, Board Member.

The Treasurer's Report was given by Patricia Schneeberger. Bob Douglas made a motion to approve the report and Dave Thompson seconded - the motion passed.

Mr. and Mrs. Farris gave an update on their two daughters who were recipients of MLA scholarship awards. They passed a flyer around showing how they were doing in their studies and recent jobs.

NEW BUSINESS

New forms were presented - Yearly Membership Form and one form combining advertising for both the newsletter and membership directory. One correction needs to be made for rates for advertising in the newsletter, Llama Living. The correction will be made in the form and it will be corrected in the next issue of Llama Living. A new benefit for advertisers is that they will also be listed on the MLA web site.

New Merchandise Chairs, Renee` Hobbins, Julia Tarsa and Sarah Wolf reported that the sale of sweatshirts and tee shirts all sold fast at the show, all sold in 3-1/2 hours. Renee` had a second printing and sold another 41 pieces.

We will be using the 2018 directory printer for the 2019 directory.

Corky spoke about accepting Pay Pal on the web site. This would allow membership fees and advertising fees to be accepted and the cost would be minimal, but convenient for members. Tami Lash made a motion to institute Pay Pal through the web site. Tricia Schneeberger seconded the motion and the motion was passed. Corky will work with the web master and report back.

2019 show dates were discussed: MLA Hillsdale Hobo Show will be April 20, 2019. This will be the Saturday before Easter. We are still checking on a date for the MLA Mid Michigan and will send information to members as soon as it is confirmed. Annette Aldrich will be in charge of the Llama Living fund raiser held during the Mid Michigan Show. Contact her with items you wish to donate. MLA Lamafest 2019 will be September 4-6, Labor Day weekend. Don Topliff is retiring from the superintendent position; however he has offered to mentor new volunteer(s). The MLA needs membership help with Lamafest. Committees are being formed for the various tasks and volunteers are needed to serve on them. Until a point person has been appointed, contact Corky Dubois if you can help in some way. A very nice letter was received from a Lamafest vendor indicating how much they enjoyed vending, how well their merchandise was received and that they are looking forward to Lamafest 2019.

Gary and Beverly Surratt gave a report on the Lama Show held at the Hillsdale County Fair in September 2018. They put on a lama show and have a lot of interaction with the public at this event. This year they shared the show barn with the goat exhibit and that was a lot of fun. They will be superintendents at the Hillsdale Fair again next year which is the last week of September 2019.

ELECTION RESULTS

After twenty ballots were tallied, Bev Souva and Tim Douwsma were elected to the MLA Board of Directors.

Tricia Schneeberger moved to adjourn the meeting. Bob Douglas seconded and the motion was passed. The meeting adjourned at 2:25 p.m. □

Wishing the Llama
Lovers in our lives
a Blessed Christmas
and Healthy New
Year!

Renee` Hobbins
and Family



2018 Humm Dinger Award Winner

Submitted by the Humm Dinger Committee

In 1997 the Humm Dinger Award was established to recognize an outstanding MLA member for their contributions to the MLA and the llama community.

This year's recipient of the Humm Dinger award has been involved with llamas and the MLA for many years, mostly behind the scenes. Often you can catch her behind the camera at our events.

Our recipient is a longtime supporter of 4-H Llamas and has hosted events in her area to teach kids about showing llamas. She supports the MLA shows, has been a vendor at Lamafest and recently took on the responsibility of coordinating the Youth Judging Class.

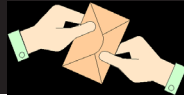
While you may not know her, you most likely have been "up close and personal" with her. She is a talented artist and has been doing the Lamafest art work since 2007. You may be wearing her work on your chest right now! And she has always donated her talents, never once accepting payment.

Now she and her sisters have assumed the positions for the MLA merchandise.

It is MLA's pleasure to award this year's Humm Diner award to Renee` Hobbins.

NOTE: *The staff at Llama Living would also like to add a special shout out to Renee` for the many years of providing the newsletter with the December cover art work and for being our go-to-person to supply llama photos when we couldn't find the perfect one for an article. □*





To Whom It May Concern,

I would like to begin by thanking you for inviting me to be a vendor at the 2018 Lamafest. This was my first experience vending at your event and I have to say it was one of the best organized vending experiences I had in quite a long while.

I appreciated the friendliness and helpfulness of the staff, the nice size booth and the assortment of other vendors attending. It was unusual at an event such as this that the vendors worked together giving the customers visiting a superior shopping experience. (Example: In selling my fiber batts, which I advertise for spinners and felters, there were many questions about felting which I in turn directed down the way to the vendor at the end of the row doing hands-on felting and she in turn shared with her customers that I had hand dyed and natural alpaca fibers available.)

The mix of products I brought to sell (all hand crafted on our farm) were well received. Several items sold out, several customers requested custom orders, which I made Saturday night and brought back on Sunday, and many others shared their excitement of my products with their friends and family members.

One can never tell when you sign up for an event how things will go. Will the event be advertised enough, will the customers come, will they buy? In the case of Lamafest, for me, it looked like it was a home run.

At events, I am always giving out business cards with info written on the back as reminders to people that are interested. In the case of your event, I had people who like my hand crafted items so much, they were giving me notes with suggestions where to post my items online and people to contact for future sales. The follow up on those suggestions led to additional sales for me, additional contacts, and more custom orders.

I am hopeful that vending takes place at your 2019 event and that I will be invited to return. You are invited to contact me directly if you have any additional questions or need any additional information.

Thank you!

Kathy Ainsworth, Clear Sky Alpacas, LLC.

Dear Michigan Lama Association,

Thank you for inviting us back to your show and giving us the opportunity to help with the obstacle courses. We really appreciate the way you take care of us and for the pay of our services.

It makes our weekend pleasant. We look forward to seeing your group at the spring shows,

Sincerely,

Jim and Pam Young

Dear Michigan Lama Association,

Thank you so much for awarding me the 2018 scholarship. It is greatly appreciated and will be used to further my education.

Thank you,

Mikayla Farris

Scholarship Winners Update

NOTE: *At the December 2018 MLA Meeting, Diana and David Farris submitted the following message and updates on their daughters, Sierra and Mikayla who both have received the two memorial scholarships offered through the MLA.*

We wish to thank MLA for not only supporting our two daughters as they pursue their college degrees, but also for the friendships, family friendly shows and the ability for our girls to be involved with llamas since they were five years old. All of the shows, parades, living nativities, etc. We participated in as a family helped us to not only promote llamas, but were wonderful family activities we all enjoyed. We are blessed to be involved with MLA.

MIKAYLA FARRIS

Mikayla received a scholarship from the MLA in 2017 and renewal in 2018. She is currently a sophomore at the University of Findlay in Findlay, Ohio. She is pursuing Western Equestrian Studies and double majoring in Equine Business. Mikayla was awarded most improved freshman her first year and tried out and made the Ranch Riding Team this year. She is involved in Campus Ministries and collegiate FFA. She interned this summer with Katona Reining Horses and is working part time for Art O'Brien at Findlay.

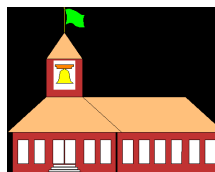


SIERRA FARRIS

Sierra received a scholarship from MLA in 2016. She graduated from Santa Fe Teaching Zoo in Gainesville, Florida in August of 2017 with an Associates in Zoo Animal Technology. She interned for four months at Greensboro Science Center in North Carolina, mainly working in the children's zoo with alpacas, goats, wallabies, miniature horses and guinea forest hogs. In January, Sierra was offered a full time job as hoof stock keeper in Tanganika Wildlife Park in Wichita, Kansas. She was told she was chosen over many other applicants due to her 4-H and llama experience. She worked with two camels, alpacas, a llama/alpaca cross, goats, zebra and kune kune pigs.



Recently, Sierra was offered a position at Segwick County Park, also in Wichita, that will allow her to return to school to pursue her Bachelor's degree in Zoo Science at Friends University. She is working part time in the North American exhibit, home to bison, pronghorn, prairie dogs and elk. She will also be filling in at the Asia/South American exhibit with the smaller hoof stock. The scholarship from MLA has allowed Sierra to pursue her passion and fulfill her dream to be a zookeeper. □



Marty's Corner

How You Do Anything Is How You Do Everything

By Marty McGee Bennett

How you do anything is how you do everything. Your "character" or "nature" just refers to how you handle all the day-to-day things in life, no matter how Small.

- Derek Sivers

The time to get ready for the show ring is WAY before you ever pack the trailer, load your alpaca and head down the road. How you teach your lama to accept a halter and walk on a lead seems relevant to the show ring, but in truth everything you do from herding to feeding to trimming toenails affects the way your animal will perform at the show. The show ring is a different world in which we have little, if any, control. The order of classes to the way a judge approaches your animal is out of your hands. To help him/her cope with the stress of the show ring, it is important to teach your animal that you can be relied upon and that both of you together can recover from a misstep. Keeping your cool when things aren't going so well is important in terms of sportsmanship, but is also immensely comforting to your lama. Practicing a flexible resilient attitude that will serve you in the show ring is best practiced at home every day. Reacting calmly is just the way you do things - always.

Showing your lama is important for lots of reasons: marketing alpacas in general, creating a reputation for your own farm or ranch and well as helping to refine your breeding objectives. It is also a place where things must happen efficiently and quickly. Judges are under a lot of pressure both to be fair AND to get the job done in the time allotted. It is difficult, if not impossible, to completely meet the needs of the animals and the judges. If you decide to show your lama, compromises with regard to handling will almost certainly be required. You will have to follow the rules of the show as well as the rules set forth in the ring by the judges or risk being dismissed. That said...there are lots of things you can do to prepare your animal for the rigors of the show ring. You owe it to your animal to practice the behaviors required in the ring ahead of time. It is your responsibility to the show staff, judges and fellow exhibitors to be prepared. I also like to remind myself when I am in the middle of shearing, herd management or teaching a weanling to lead that "into each life a little rain must fall". None of us animals, two-legged included, get to lead lives completely free of stress. I believe it is reasonable to show lamas and showing can be done reasonably.



Practice at home before you enter the ring.

Before addressing specific behaviors that will be required of your lama AND of you, please consider the following points:

- ◆ Even if a lama is drop-dead gorgeous, not all lamas can handle the show ring. The choice between a decorated show winner or a healthy animal is not much of a choice.
- ◆ Many (maybe most) of the problems that handlers have with lamas in the show ring are the result of mishandling and can be corrected by taking responsibility and changing the approach to the problem. Consider that you can't teach a lama to do something until you GET then to do it. Many problematic showing behaviors are learned as a result of handlers asking too much too soon. If your lama is not successful at the behavior you want, be content with less and build on that. Doing over and over what is NOT working only teaches your lama to do better what you DON'T want him to do. Unfortunately, they get good at these behaviors very quickly
- ◆ Not all lamas are temperamentally the same - it will take some lamas longer to "get it" than others. It will

never be useful when it comes to getting ready for the show ring to wait until the last minute. If you don't have time to prepare, it would be better to stay home.

- ◆ Creating a safe environment at home from the time an animal arrives on your farm or is born on your farm will pay you back in the show ring. Herd your llamas into a small catch pen every time you need to lay hands on them and you will reap the benefits in the show ring.
- ◆ When in the show ring, it is your job to show the animal and facilitate the inspection. The ring steward is there to assist the judge and is most often going to stand at the opposite shoulder without touching the animal to help steady the animal. Ring stewards are not there to show your animal for you.
- ◆ Halter Fit is crucial to good show performance. A well fitting halter fits well up on the thick part of the nose bone and **will stay three no matter what**. Taking halters off whenever possible (that means anytime your llama is not on a lead) allows your llama to relax more fully and hence have more tolerance for the show ring.

There are certain predictable events that **will** happen in the show ring. You can prepare yourself and your animal for these events in advance. There are also certain behaviors you will need to elicit from your llama to show him/her off for the judge. You can work with your llama in advance and YOU can learn the techniques required to get these behaviors from your llama when on a lead.

Predictable Perhaps Problematic Events

Noise and Movement: From the time you get off the trailer until you load your animal to go home he/she will be subjected to noise, movement and unusual sites. Help prepare your llama by introducing some new things into the barn environment several months or weeks prior to the show. A boom box in the barn, balloons tied to the fence or inside the barn or interesting things left on the floor of the barn will help create llamas that are resilient. They won't be little divas that can't handle a little something out of the ordinary. Introducing new things incrementally is called systematic desensitization. When done properly systematic desensitization never provokes a fear response. Introduce new items gradually - for example soft music before loud rock music, a small piece of carpet on the ground in the barn before a big plastic tarp. Have fun being creative with what and how you present new experiences. Scaring your animals with too much too soon by presenting the full stimulus all at once with no way to avoid it can create deeply ingrained fear. In behavioral circles this is called response blocking or flooding and its consequences can be very difficult and time consuming to resolve. Taking your llama to a show with no previous preparation is, in a way flooding and can result in an animal that never shows well.

People Walking Up Quickly: The judge and ring steward are going to walk up to your llama quickly. The judge is going to touch your animal. You can help your llama prepare for this inevitable event by occasionally walking quickly when you put hay out or when you muck out. I am not suggesting walking up quickly to a resting animal with your intent to startle, but simply moving more quickly around them. You can increase your speed gradually as in systematic desensitization as described above. This process will prepare your animals for the inevitable, if they are to be shown.

If you have been using the "chase-Corner-Grab and Hold" approach to catching, here is where you pay the price for this very common catching practice. Like it or not, this technique teaches your llama to run or move away from humans until there is no place else to run and to attempt to escape by throwing his full weight into your arms. In the show ring there is no corner and when the judge and ring steward approach your animal he will react instinctively by trying to run and you will have to hold him/her still. This starts the process that often ends in full-on restraint. Using restraint in the show ring is problematic for a number of reasons: it looks bad, most people of normal strength cannot pull it off with a determined llama, and it may create a llama that becomes unshowable. Always use a small catching area at home (9x9 feet square) and approach your llama from behind the eye using the mid line catching technique and you will be setting yourself up for the show ring. Once your llama is trained to lead, practice for the show ring by having people walk up to you while you



Judges will approach your llama.

Continued on page 12

Marty's Corner

Continued

balance your lama. Balancing is not restraint - it is the process of help your lama remain equally weighted over his/her feet and involves a short correcting signal that preempts the attempt to move followed by a release.

Behaviors You Must Be Able To Affect And/or Correct:

Head held too low.

Walking too slow.

Walking too fast.

Preventing movement.

Asking for specific limited movement as in one foot or one step.

The answer to being able to affect all of these behaviors lies in your ability to make small corrections to an animal's stance or balance that are subtle and well timed, allow the animal to have a chance to integrate the correction and then correct again if necessary. All of the behaviors listed above are best attended to with small intermittent corrections instead of a more forceful steady pressure. Common mistakes include: Using steady pressure in an attempt to force the animal to perform the desired behavior resulting in an animal that resists in the opposite direction. Pulling an animal forward results in an animal that pulls back on the line. The net result is that the animal actually slows down. Holding an animal back steadily results in the animal pushing forward into the pressure and ironically causes the animal to speed up. Holding the head up often results in an animal that slows down, walks awkwardly, or pushes the head down into the pressure.

COMPLETELY LOSING CONTACT WITH THE ANIMAL

Having no contact makes it impossible to offer guidance or corrections and results in a loss of control. This is NOT the same as leading with more line. Losing contact means too much slack in the line. You can lead WITH contact from a distance. It is about the connection with the animal, not distance from the animal.

OVER CORRECTING

Using overly large or abrupt corrections distract or startle the lama and often makes it difficult to judge the gait or stance. The secret to good communication when leading a lama is to maintain a LIGHT contact through the line, notice early on when an animal needs a correction, make it, AND then RELEASE. Think of your lead rope as a telephone. Pulling steadily = a one sided conversation resulting in a lama hang-up. No contact = the call is dropped. There is one sure fire way to get better at leading.....videotape yourself! Look for moments when the animal does exactly what you want OR exactly what you don't want and analyze your behavior just before and during the interaction. When you lama misbehaves you will probably notice that you are doing one of the three common errors described above. A good self-check for the quality of your connection as you lead is angle of the hook on the lead rope. Leading in contact means that the hook is angled slightly towards you, pulling steadily means that the hook and lead rope are consistently parallel to the ground. Losing contact means that the hook is dangling freely. Periodically glancing at the hook attached to the halter will insure that you are paying attention to the way you are leading. When asked to stand in line or in profile paying attention to your animal's stance. You may have to ask your lama to move one foot slightly. Practice moving one foot at a time with intermittent signals. Working inside a maze made of PVC poles is a great place to practice this behavior. Work your lama over obstacles even if you never expect to show in an obstacle class. You will have fun and your lama will learn a lot about his/her balance and self carriage.

The show ring is not a perfect environment, but when you enter a show and agree to participate you have entered into a kind of contract. Your end of the contract is to be as prepared as you can possibly be. This will serve your interests, the interests of the show staff and judge as well as the most important player...your lama.

For more information about Marty's training techniques and advise check out the Camelidynamics web site at camelidynamics.com.

NOTE TO NEWSLETTER NETWORK EDITORS: *The article is offered to the Newsletter Network by Marty McGee Bennett - the photos belong to Llama Living.* □



2018 MLA Scholarship Recipient

Submitted By The Scholarship Committee

The MLA Scholarship program is supported by the Kathy Larson and Laurel Zechlinski Memorial Scholarship Funds.

Our 2018 recipient of the MLA Scholarship is a repeat winner. She continues to be enrolled at the University of Findlay in Equine Studies and Business and maintains a 3.6 GPA. Once again this year, she was able to participate in an abbreviated "leaping Llama" with her high-flying champion, Peppermint!

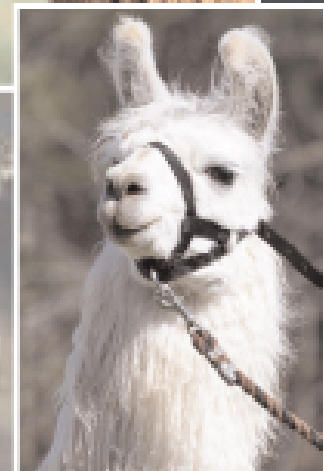
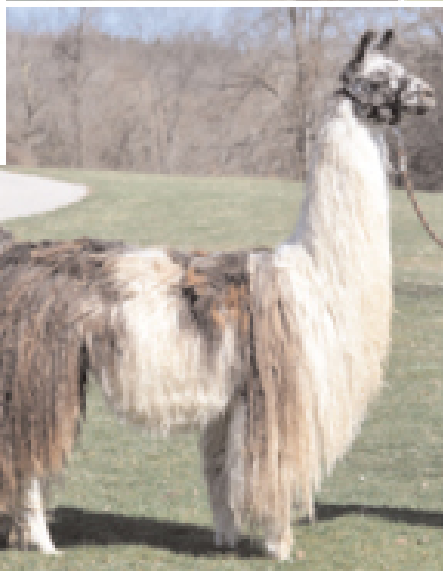
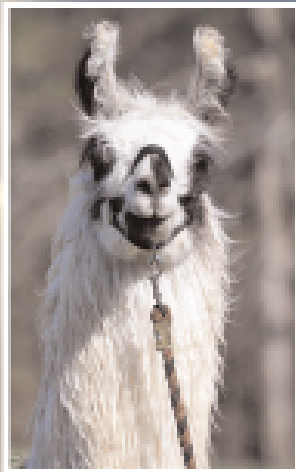
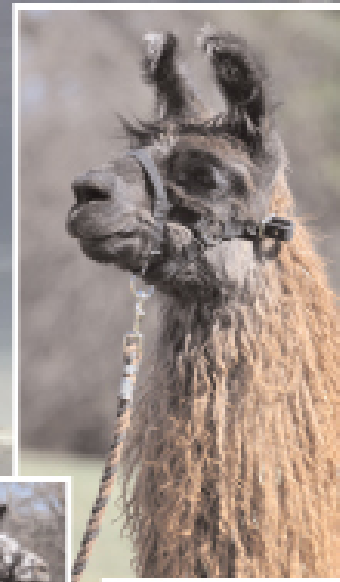
The 2018 scholarship recipient is Mikayla Farris. Mikayla has already started school so we will be mailing her the check.

As a reminder any MLA member is welcome to apply for either of the two MLA Scholarships each year. All the forms and instructions are on the web site. ☐



Looking for a great new addition to your herd?

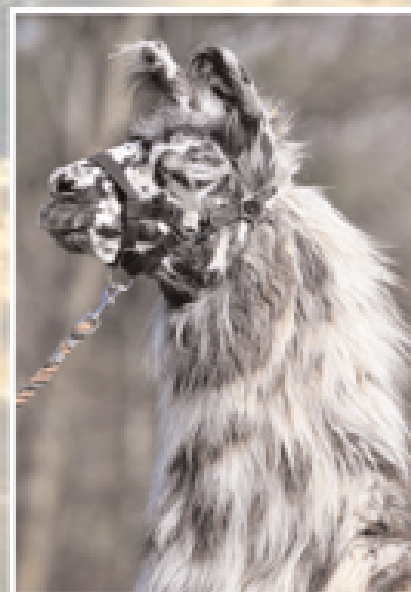
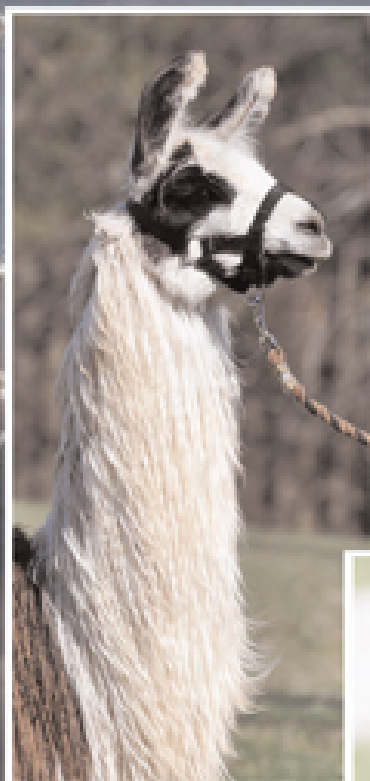
You will find a wide selection of young males & females, mature females - bred or open, and truly great stud prospects. These colorful suris & silkies are all 4-H trained and bred for correctness and people-pleasing personalities.



Glen & Margo Unzicker • 17740 County Road 14 • Goshen, IN 46528

You're sure to find it at Klein Himmel!

You will find great deals and packages made up of fine quality show, breeding and companion llamas. If you are looking for that perfect llama, contact Klein Himmel. Be sure to visit our web site for more pictures and information.



Klein Himmel
(LITTLE HEAVEN)

P: 574.825.4459 • E: glenunzicker@earthlink.net • W: www.kleinhimmel.com

Michigan Lama Association

Summary Balance Sheet

As of November 16, 2018

ASSETS	
Current Assets	
Checking/Savings	\$26,535.76
Accounts Receivable	<u>-\$190.00</u>
Total Current Assets	<u>\$26,345.76</u>
TOTAL ASSETS	<u>\$26,345.76</u>
LIABILITIES AND EQUITY	
Liabilities	
Current Liabilities	
Accounts Payable	<u>-\$150.00</u>
Total Current Liabilities	<u>-\$150.00</u>
TOTAL LIABILITIES	<u>-\$150.00</u>
EQUITY	<u>\$26,495.76</u>
TOTAL LIABILITIES AND EQUITY	<u>\$26,345.76</u>

ILR Show Results: Lamafest 2018

ADULT SHOWMANSHIP

- 1 - Solid Rock's Snickers, Becci Kunkel
- 2 - Brooks Creek Preema, Amanda Smith
- 3 - PVL Layna, Mark Foeder

YOUTH SENIOR SHOWMANSHIP

- 1 - CVL Partlicloudy, Courtni Schmeichel
- 2 - SHAG Sassy Lassie, Avery Sims
- 3 - BHR Katniss, Emily Smith

YOUTH INTERMEDIATE SHOWMANSHIP

- 1 - Saxton, Kenzie Matthews
- 2 - Star Freckled Princess, Ella Pickett
- 3 - Hard Rock's Black Gold GE51, Della Rose Cromer

YOUTH JUNIOR SHOWMANSHIP

- 1 - SHAG Izzit, Alison Bishop
- 2 - HF Valorie, Catlin Kies
- 3 - Jackpot Blues, Lauren Pickett

COSTUME CLASS

- 1 - SHAG Saxony, Isabella Whitaker

- 2 - Twenty One Reasons To Be Thankful, Karen Smith

- 3 - GFF Darling Dot, Ginger Burns

SURI FEMALE JUVENILE

- 1 - Bold Happiness, Lloyd and Tami Lash

SURI FEMALE YEARLING

- 1 - SPCL Iolani Silver, Greg & Debbie Shellabarger
- 2 - LUA Waves of Brilliance, Lloyd & Tami Lash
- 3 - PVL Layna, Foerder/Nenni

SURI FEMALE 2 YEAR OLD

- 1 - NFA's Petaloso, Robert & Debra Foti

SURI FEMALE ADULT

- 1 - Klein Himmel's Amelia Earhart, Amanda Smith
- 2 - Klein Himmel's Rosette, Glen & Margo Unzicker
- 3 - Klein Himmel's Zenyatta, Glen & Margo Unzicker

SURI FEMALE GRAND/RESERVE

- 1 - Klein Himmel's Amelia Earhart, Amanda Smith
- 2 - LUA Hold Happiness, Lloyd & Tami Lash
- 3 - SPCL Iolani Silver, Greg & Debbie Shellabarger

SURI MALE YEARLING

- 1 - GNLC Mikko, Greg & Debbie Shellabarger
- 2 - SPCL Camreon Sterling, Greg & Debbie Shellabarger
- 2 - Jackpot Blues, Foerder & Nenni

SURI MALE ADULT

- 1 - NV's Knight Ryder, Timothy & Stephanie Douwsma

SURI MALE GRAND/RESERVE

- 1 - GNLC Mikko, Greg & Debbie Shellabarger
- 2 - SPCL Cameron Sterliing, Greg & Debbie Shellabarger
- 3 - NV's Knight Ryder, Timothy & Stephanie Douwsma

LIGHT WOOL FEMALE JUVENILE

- 1 - HF Layla II, Lloyd & Tami Lash

LIGHT WOOL FEMALE YEARLING

- 1 - AAL Blue Honey Do, Tom & Barb Parsons
- 2 - LUA My Girl Status, Lloyd & Tami Lash

LIGHT WOOL FEMALE ADULT

- 1 - Winter's Dark Duchess. Bev Garrett & Sue Saunders

LIGHT WOOL FEMALE GRAND

- 1 - AAL Blue Honey Do, Tom & Barb Parsons
- 2 - HF Layla II, Lloyd & Tami Lash
- 3 - LUA My Girl Status, Lloyd & Tami Lash

LIGHT WOOL MALE YEARLING

- 1 - GFF Silver Moment, Ginger Burns

LIGHT WOOL MALE ADULT

- 1 - Corduroy's Grisom, Tricia Schneeberger

LIGHT WOOL MALE GRAND/RESERVE

- 1 - Corduroy's Grisom, Tricia Schneeberger
- 2 - GFF Silver Moment, Ginger Burns

MEDIUM WOOL FEMALE JUVENILE

- 1 - HF Sophia, Lloyd & Tami Lash

MEDIUM WOOL FEMALE YEARLING

- 1 - AAL Illuminati, Tom & Barb Parsons
- 2 - SPCL Sterlings She Stole My Heart, Greg & Debbie Schellabarger
- 3 - Estella Briante, Foerder & Nenni

MEDIUM WOOL FEMALE 2 YEAR OLD

- 1 - HF Valorie, Lloyd & Tami Lash
- 2 - Maria's Calico, Heather Holland
- 3 - CNS Mudrin's Mist, Ella White

MEDIUM WOOL FEMALE ADULT

- 1 - CVL Persian Dymond, Foerder & Nenni
- 2 - CVL Partlicloudy, Foerder & Nenni
- 3 - SHAG Sassy Lassie, Foerder & Nenni

MEDIUM WOOL FEMALE GRAND/RESERVE

- 1 - AAL Illuminati, Tom & Barb Parsons
- 2 - HF Sophia, Lloyd & Tami Lash
- 3 - HF Valorie, Lloyd & Tami Lash

MEDIUM WOOL MALE YEARLING

- 1 - GNLC Chief Two Guns, Greg & Debbie Shellabarger
- 2 - LUA Wave's of Prayer, Lloyd & Tami Lash
- 3 - Rocky Road, Foerder & Nenni

MEDIUM WOOL MALE 2 YEAR OLD

- 1 - Argentine Odysseus, Dawn Anderson

MEDIUM WOOL MALE ADULT

- 1 - AAL Grand Master, Tom & Barb Parsons
- 2 - Argentine Mozart, Dawn Anderson

MEDIUM WOOL MALE GRAND/RESERVE

- 1 - GNLC Chief Two Guns, Greg & Debbie Shellabarger
- 2 - LUA Wave of Prayer, Lloyd & Tami Lash
- 3 - AAL Grand Master, Tom & Barb Parsons

HEAVY WOOL FEMALE JUVENILE

- 1 - LUA Isn't She Wonderful, Lloyd & Tami Lash

HEAVY WOOL FEMALE 2 YEAR OLD

- 1 - Argentine Morgana, Dubois/Greaves
- 2 - Argentine Caccini, Corky Dubois
- 3 - Tabouleh Argentine RTC, Robert C. Douglas

HEAVY WOOL FEMALE GRAND/RESERVE

- 1 - Argentine Morgana, Dubois/Greaves
- 2 - LUA Isn't She Wonderful, Lloyd & Tami Lash
- 3 - Argentine Caccini, Corky Dubois

HEAVY WOOL MALE 2 YEAR OLD

- 1 - MSF Show Stopper, Lloyd & Tami Lash
- 2 - SPCL Dark Knight, Greg & Debbie Shellabarger
- 3 - NFA's Cazerro, Robert & Debra Foti

HEAVY WOOL MALE GRAND

- 1 - NFA's Cezarro, Robert & Debra Foti
- 2 - SPCL Dark Knight, Greg & Debbie Shellabarger
- 3 - NFA's Cezarro, Robert & Debra Foti

NON BREEDER YEARLING

- HF Venson, Amanda Smith

NON BREEDER 2 YEAR OLD

- 1 - Saxton, Foerder & Nenni
- 2 - Solid Rock's Indestructible, Amanda Smith

NON BREEDER ADULT

- 1 - MWF Mando DeDinero, Lisa Thomas
- 2 - Good Juju, Tom & Barb Parsons
- 3 - Shadyhook Merlin of Camelott, Carmen Hartwig

NON BREEDER GRAND/RESERVE

- 1 - MWF Mando DeDinero, Lisa Thomas
- 2 - Good Juju, Tom & Barb Parsons
- 3 - Saxton, Foerder & Nenni

GET OF SIRE

- 1 - Argentine Marcel's Ghiradeli, Dubois/Greaves

ADVANCED OBSTACLE

- 1 - Solid Rock's Snickers, Joe Young
- 2 - Brooks Creek Preema, Amanda Smith
- 3 - MSF Show Stopper, Lloyd Lash

NOVICE OBSTACLE

- 1 - MWF Mando DeDinero, Lisa Thomas
- 2 - Argentine Shock 'N Awe, Dawn Anderson
- 3 - LUA Wave's of Prayer, Lloyd Lash

NOVICE OBSTACLE

- 1 - MWF Mando DeDinero, Lisa Thomas
- 2 - Argentine Shok 'N Awe, Dawn Anderson
- 3 - LUA Wave's of Prayer, Lloyd Lash

Continued on page 18

ILR Lamafest

Continued

YOUTH SENIOR OBSTACLE

- 1 - CVL Particloudy, Courtni Schmeichel
- 2 - Maria's Calico, Avery Sims
- 3 - SHAG Sassy Lassie, Avery Sims

YOUTH INTERMEDIATE OBSTACLE

- 1 - Saxton, Kenzie Matthews
- 2 - Hard Rock's Black Gold GE51, Della Rose Cromer
- 3 - Star Freckled Princess, Ella Picket

YOUTH JUNIOR OBSTACLE

- 1 - Jackpot Blues, Lauren Picket
- 2 - LUA Waves of Brilliance, Catlin Kies
- 3 - Solid Rock's Robuck, Stephanie Onion

ADVANCED PUBLIC RELATIONS

- 1 - LUA My Girl Status, Lloyd Lash
- 2 - Solid Rock's Snickers, Joe Young
- 3 - Brooks Creek Preema, Amanda Smith

NOVICE PUBLIC RELATIONS

- 1 - MWF Mando DeDinero, Lisa Thomas
- 2 - LUA Wave's of Prayer, Lloyd Lash
- 3 - HF Sophia, Lloyd Lash

YOUTH SENIOR PUBLIC RELATIONS

- 1 - Mania's Calico, Heather Holland
- 2 - Avater, Grace Peconge
- 3 - SHAG Sassy Lassie, Avery Sims

YOUTH INTERMEDIATE PUBLIC RELATIONS

- 1 - HF Venson, Hailey Sorg
- 2 - Saxton, Kenzie Matthews
- 3 - Star Freckled Princess, Ella Picket

YOUTH JUNIOR PUBLIC RELATIONS

- 1 - LUA Waves of Brilliance, Caitlin Kies
- 2 - SHAG Saxony, Isabella Whitaker
- 3 - Solid Rock's Robuck, Stephanie Onion

ADVANCED PACK

- 1 - Brooks Creek Preema, Amanda Smith
- 2 - Solid Rock's Snickers, Joe Young
- 3 - MSF Show Stopper, Lloyd Lash

NOVICE PACK

- 1 - PVL Layna, Mark Foerder
- 2 - LUA Wave's of Prayer, Lloyd Lash
- 3 - LUA Isn't She Wonderful, Lloyd Lash

YOUTH SENIOR PACK

- 1 - You Only Live Once, Madison Wells
- 2 - Coal, Cassandra Williams
- 3 - SHAG Nutter Butter, Megan Bixler

YOUTH INTERMEDIATE PACK

- 1 - Saxton, Kenzie Matthews
- 2 - Solid Rock's Stellar, Carter North
- 3 - HF Venson, Halley Sorg

YOUTH JUNIOR PACK

- 1 - Jackpot Blues, Lauren Pickett
- 2 - Solid Rock's Robuck, Stephanie Onion

3 - LUA Waves of Brilliance, Catlin Kies
YOUTH JUNIOR PERFORMANCE GRAND/RESERVE

- 1 - LUA Waves of Brilliance, Catlin Kies
- 2 - Jackpot Blues, Lauren Pickett
- 3 - Solid Rock's Robuck, Stephanie Onion

YOUTH INTERMEDIATE PERFORMANCE GRAND/RESERVE

- 1 - Saxton, Kenzie Matthews
- 2 - Star Freckled Princess, Ella Pickett
- 3 - HF Venson, Halley Sorg

YOUTH SENIOR PERFORMANCE GRAND/RESERVE

- 1 - Mania's Calico, Heather Holland
- 2 - SHAG Sassy Lassie, Avery Sims
- 3 - CVL Particloudy, Courtni Schmeichel

ADVANCED PERFORMANCE GRAND/RESERVE

- 1 - Solid Rock's Snickers, Joe Young
- 2 - Brooks Creek Preema, Amanda Smith
- 3 - LUA My Girl Status, Lloyd Lash

NOVICE PERFORMANCE GRAND/RESERVE

- 1 - SUA Wave's of Prayer, Lloyd Lash
- 2 - LUA Isn't She Wonderful, Lloyd Lash
- 3 - PVL Layna, Mark Foerder ☐

**No Space Is Too
Small.....**



**...to have your
advertisement
noticed!**

ALSA Show Results: Lamafest 2018

YOUTH JUNIOR, YOUTH JUDGING

- 1 - Jackpot Blues, Lauren Pickett
- 2 - SHAG Izzit, Alison Bishop
- 3 - SHAG Saxony, Isabella Whitaker

YOUTH INTERMEDIATE, YOUTH JUDGING

- 1 - Estella Brilante, Alice Matthews
- 2 - Star Freckled Princess, Ella Pickett
- 3 - Saxton, Kenzie Matthews

YOUTH SENIOR, YOUTH JUDGING

- 1 - SHAG Nutter Butter, Megan Bixler
- 2 - SHAG Power Mania, Katie Tuttle
- 3 - Star Top Prince, Sarah Strebing

ADULT SHOWMANSHIP

- 1 - CVL Persian Dymond, Stephanie Foerder
- 2 - PVL Layna, Mark Foerder
- 3 - Solid Rock's Snickers, Becci Kunkel

YOUTH SENIOR SHOWMANSHIP

- 1 - SHAG Nutter Butter, Megan Bixler
- 2 - SHAG Sassy Lassie, Avery Sims
- 3 - SHAG Terzino, Olivia Mitchel

YOUTH INTERMEDIATE SHOWMANSHIP

- 1 - Star Freckled Princess, Ella Pickett
- 2 - Hard Rock's Black Gold GE51, Della Rose Cromer
- 3 - GC's Believe It Or Not, Elizabeth Ruckman

YOUTH JUNIOR SHOWMANSHIP

- 1 - SHAG Izzit, Alison Bishop
- 2 - Jackpot Blues, Lauren Pickett
- 3 - HF Valorie, Caitliin Kies

COSTUME CLASS

- 1 - SHAG Saxony, Isabella Whitaker
- 2 - Twenty One Reasons To Be Thankful, Karen Smith
- 3 - GFF Darling Dot, Ginger Burns

SURI FEMALE JUVENILE

- 1 - LUA Bold Happiness, Lloyd and Tami Lash

SURI FEMALE YEARLING

- 1 - LUA Waves of Brilliance, Lloyd & Tami Lash
- 3 - PVL Layna, Mark Foerder

SURI FEMALE 2 YEAR OLD

- 1 - NFA's Petaloso, Robert Foti

SURI FEMALE ADULT

- 1 - Klein Himmel's Amelia Earhart, Amanda Smith
- 2 - Star Freckled Princess, Foerder & Nenni
- 3 - SHAG Chiara, Foeder & Nenni

SURI FEMALE GRAND

- LUA Waves of Brilliance, Lloyd & Tami Lash
- 2 - Klein Himmel's Amelia Earhart, Amanda Smith

SURI MALE YEARLING

- 1 - GNLC Mikko, Greg & Debbie Shellabarger

- 2 - SPCL Cameron Sterling, Greg & Debbie Shellabarger
- 3 - Jackpot Blues, Foerder & Nenni

SURI MALE ADULT

- 1 - NV's Knight Ryder, Timothy & Stephanie Douwsma
- 3 - Jackpot Blues, Foerder & Nenni

SURI MALE ADULT

- 1 - NV's Knight Ryder, Timothy & Stephanie Douwsma
- 2 - Klein Himmel's Zig Zag, Glen & Margo Unzicker

SURI MALE GRAND

- GNLC Mikko, Greg & Debbie Shellabarger

SURI MALE RESERVE

- SPCL Cameron Sterling, Greg & Debbie Shellabarger

LIGHT WOOL FEMALE JUVENILE

- 1 - HF Layla II, Lloyd & Tami Lash

LIGHT WOOL FEMALE YEARLING

- 1 - AAL Blue Honey Do, Tom & Barb Parsons
- 2 - LUA My Girl Status, Lloyd & Tami Lash
- 3 - HF Rosie, Don & Sue McFarland

LIGHT WOOL FEMALE ADULT

- 1 - Winter's Dark Duchess, Bev Garrett & Sue Saunders

LIGHT WOOL FEMALE GRAND

- AAL Blue Honey Do, Tom & Barb Parsons

LIGHT WOOL FEMALE RESERVE

- LUA My Girl Status, Lloyd & Tami Lash

LIGHT WOOL MALE JUVENILE

- 1 - MCFL Toby, Don & Sue McFarland

LIGHT WOOL MALE YEARLING

- 1 - GFF Silver Moment, Ginger Burns

LIGHT WOOL MALE GRAND

- MCFL Toby, Don & Sue McFarland

LIGHT WOOL MALE RESERVE

- GFF Silver Moment, Ginger Burns

MEDIUM WOOL FEMALE JUVENILE

- 1 - HF Sophia, Lloyd & Tami Lash

MEDIUM WOOL FEMALE YEARLING

- 1 - AAL Illuninati, Tom & Barb Parsons
- 2 - SPCL Sterlings She Stole My Heart, Greg & Debbie Shellabarger

MEDIUM WOOL FEMALE 2 YEAR OLD

- 1 - HF Valorie, Lloyd & Tami Lash

- 2 - CNS Mudrin's Mist, Ella White

- 3 - Mania's Calico, Heather Holland

MEDIUM WOOL FEMALE ADULT

- 1 - CVL Partlicloudy, Foerder & Nenni
- 2 - CVL Persian Dymond, Foerder & Nenni

MEDIUM WOOL FEMALE GRAND

- HF Valorie, Lloyd & Tami Lash

MEDIUM WOOL FEMALE RESERVE

- AAL Illuminati, Tom & Barb Parsons

Continued on page 20

ALSA Show Results Lamafest

2018

Continued

MEDIUM WOOL MALE JUVENILE

1 - HF Butch, Don & Sue McFarland

MEDIUM WOOL MALE YEARLING

1 - GNLC Chief Two Guns, Greg & Debbie Shellabarger

2 - LUA Wave's of Prayer, Lloyd & Tami Lash

3 - Rocky Road, Foerder & Nenni

MEDIUM WOOL MALE ADULT

1 - AAL Grand Master, Tom & Barb Parsons

2 - Polar Starr, Gary & Beverly Surratt

MEDIUM WOOL GRAND

AAL Grand Master, Tom & Barb Parsons

2 - GNLC Chief Two Guns, Greg & DebbieShellabarger

HEAVY WOOL FEMALE JUVENILE

1 - LUA Isn't She Wonderful, Lloyd & Tami Lash

HEAVY WOOL FEMALE 2 YEAR OLD

1 - Argentine Morgana, Dubois/Greaves

2 - Tabouleh Argentine RTC, Robert C. Douglas

3 - Argentine Caccini, Corky Dubois

HEAVY WOOL FEMALE ADULT

1 - Fancyful Moment GEL, Gary & Beverly Surratt

HEAVY WOOL FEMALE GRAND

Argentine Morgana, Dubois/Greaves

HEAVY WOOL FEMALE RESERVE

LUA Isn't She Wonderful, Lloyd & Tami Lash

HEAVY WOOL MALE 2 YEAR OLD

1 - MSF Show Stopper, Lloyd & Tami Lash

2 - SPCL Dark Knight, Greg & Debbie Shellabarger

3 - NFA's Cezarro, Robert & Debra Foti

HEAVY WOOL MALE GRAND

MSF Show Stopper, Lloyd & Tami Lash

HEAVY WOOL MALE RESERVE

SPCL Dark Knight, Greg & Debbie Shellabarger

NON BREEDER YEARLING

1 - HF Venson, Amanda Smith

NON BREEDER 2 YEAR OLD

1 - Saxton, Foerder/Nenni

2 - Solid Rock's Indestructible, Amanda Smith

NON BREEDER ADULT

1 - Good Juju, Tom & Barb Parsons

2 - Klein Himmel's Zadok, Glen & Margo Unzicker

3 - SHAG Terzino, Foerder & Nenni

NON BREEDER GRAND

Good Juju, Tom & Barb Parsons

NON BREEDER RESERVE

Klein Himmel's Zadok, Glen & Margo Unzicker

PRODUCE OF DAM

1 - Cornucopia's Belle, Gary & Beverly Surratt

GET OF SIRE

1 - Argentine Marcel's Ghiradelli, Dubois/Greaves

MASTERS OBSTACLE

1 - Solid Rock's Snickers, Joe & Becci Young

2 - Brooks Creek Preema, Amanda Smith

ADVANCED OBSTACLE

1 - Solid Rock's Robuck, Joe & Becci Young

NOVICE OBSTACLE

1 - PVL Layna, Foerder & Nenni

2 - Solid Rock's Opera Ghost, Amanda Smith

3 - MSF Show Stopper, Lloyd & Tami Lash

YOUTH SENIOR OBSTACLE

1 - Avater, Grace Peconge

2 - SHAG Power Mania, Katie Tuttle

3 - Mania's Calico, Heather Holland

YOUTH INTERMEDIATE OBSTACLE

1 - Hard Rock's Black Gold GE51, Della Rose Cromer

2 - Star Freckled Princess, Ella Pickett

3 - HF Venson, Halley Sorg

YOUTH JUNIOR OBSTACLE

1 - Jackpot Blues, Lauren Pickett

2 - RADE Zippity's Nicker, Ada Ruckman

3 - LUA Waves of Brilliance, Catlin Kies

MASTERS PUBLIC RELATIONS

1 - Solid Rock's Snickers, Joe Young

2 - Brooks Creek Preema, Amanda Smith

ADVANCED PUBLIC RELATIONS

1 - Solid Rock's Robuck, Becci Kunkel

NOVICE PUBLIC RELATIONS

1 - PVL Layna, Mark Foerder

2 - LUA My Girl Status, Lloyd Lash

3 - Solid Rock's Opera Ghost, Kalynn Sorg

YOUTH SENIOR PUBLIC RELATIONS

1 - MSF Stormm Chaser, Kameryn Speicher

2 - SHAG Chiara, Morgan Gilbert

3 - SHAG Sassy Lassie, Avery Sims

YOUTH INTERMEDIATE PUBLIC RELATIONS

1 - Star Freckled Princess, Ella Pickett

2 - CNS Mudrin's Mist, Ella White

3 - HF Venson, Halley Sorg

YOUTH JUNIOR PUBLIC RELATIONS

1 - Jackpot Blues, Lauren Pickett

2 - LUA Waves of Brilliance, Catlin Kies

3 - SHAG Saxony, Isabell Whitaker

MASTER PACK

1 - Solid Rock's Snickers, Joe Young

2 - Brooks Creek Preema, Amanda Smith

ADVANCED PACK

1 - Solid Rock's Robuck, Becci Kunkel

NOVICE PACK

1 - LUA My Girl Status, Lloyd Lash

2 - HF Sophia, Lloyd Lash

3 - PVL Layna, Mark Foerder

YOUTH SENIOR PACK

1 - SHAG Terzino, Olivia Mitchell

2 - SHAG Power Mania, Katie Tuttle

3 - BHR Katniss, Emily Smith

YOUTH INTERMEDIATE PACK

1 - Star Freckled Princess, Ella Pickett

2 - HF Venson, Halley Sorg

3 - Hard Rock's Black Gold GE51, Della Rose Cromer

YOUTH JUNIOR PACK

1 - LUA Waves of Brilliance, Catlin Kies

2 - Jackpot Blues, Lauren Pickett

3 - SHAG Izzit, Alison Bishop

YOUTH JUNIOR PERFORMANCE GRAND

Jackpot Blues, Lauren Pickett

YOUTH JUNIOR PERFORMANCE RESERVE

LUA Waves of Brilliance, Caitlin Kies

YOUTH INTERMEDIATE PERFORMANCE GRAND

Star Freckled Princess, Ella Pickett

YOUTH INTERMEDIATE PERFORMANCE

RESERVE

HF Venson, Hailey Sorg

YOUTH SENIOR PERFORMANCE GRAND

Avater, Grace Peconge

YOUTH SENIOR PERFORMANCE RESERVE

SHAG Power Mania, Katie Tuttle

MASTERS PERFORMANCE GRAND

Solid Rock's Snickers, Joe Young

MASTERS PERFORMANCE RESERVE

Brooks Creek Preema, Amanda Smith

ADVANCED PERFORMANCE GRAND

Solid Rock's Robuck, Becci Kunkel

NOVICE PERFORMANCE GRAND

PVL Layna, Mark Foerder

NOVICE PERFORMANCE RESERVE

LUA My Girl Status, Lloyd Lash ☐

Winterizing Your Llamas

By Charlene Arendas, DVM

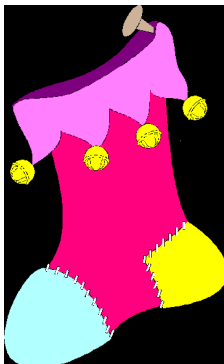
Show season has come to an end and we are all prepping for the cold months ahead. But, while you winterize your pool, bring in lawn furniture, and cover things up, don't forget about the changes your herd is going through as well!

HAY IS THE NEW GRASS

Literally. Your animal's diets have made a tremendous shift from a tender, moisture-filled blade of grass to a dry, potentially sharp and stemmy piece of hay. And, depending on whether or not you grow your own hay from your own pastures, the nutrition is likely quite different! Hopefully, you were able to make the transition gradually. But, sometimes a sudden change from grass to hay (or vice versa) can cause GI upset in some animals. Also of concern is the quality of the hay, dustiness, stemminess, and possibility of mold. Dusty hay may induce watery eyes, sneezing and respiratory infections in some animals. Stemmy hay is not just difficult to chew, it may cause a lot of waste because some will refuse to eat it. Additionally, this is one of the primary ways Listeria infections occur - a piece of hay contaminated with Listeria bacteria pokes the inside of their mouth and the infection travels up a cranial nerve and is basically a direct route into the brain. Moldy hay can also be quite toxic! If you ever suspect mold, please do not feed it.

WATER IS NOW A "HOT" COMMODITY

Now that they're eating hay 24/7, they are going to drink more water than when they were grazing. Remember, hay is *dried* grass, hence all the moisture is gone. So now you've got animals that want to drink more and now we add the risk of freezing water sources. Maybe you have tank heaters, maybe you have heated buckets, or maybe you have another method to keep water from freezing. Just remember, they NEED more water, so it's even more important the water be drinkable. Check for stray voltage - they're not going to want to drink if they keep getting zapped! How warm does the water get with your heating method? If it's too warm or too cold, they might not drink it. What is the water quality? Although we always think of summer heat and the need for water, don't disregard the need in the winter!



Continued on page 22.

Winterizing Your Llamas

Continued

FIBER COVERAGE IS BACK IN STYLE

Some of your animals only get shorn in the spring. More than likely, those ones have already grown back enough fiber to keep them warm over the winter. But, many of us have show animals that get trimmed multiple times a year, maybe even as late as October. Keep a close eye on autumn-trimmed animals or those that have minimal fiber regrowth going into winter. Are they thin? What does their eyelid membrane color (FAMACHA score) look like? These may be animals that need extra monitoring or possibly even a coat. Remember that there are very few instances where a coat is needed 24/7. The fiber needs some time to breathe and you'd be surprised how warm and sweaty it can get underneath there. Try to only use coats when absolutely necessary.

SAY GOODBYE TO SUNNY DAYS

Less daylight hours means less sun exposure. Also, animals may spend more time inside rather than out in a snow-covered pasture. Dark animals have the toughest time absorbing vitamin D. You may have some autumn-born crias or young growing animals that could benefit from some vitamin D supplementation. You should always be cautious and consult your vet with how to dose vitamin D, as an overdose could be toxic to the kidneys and potentially fatal!

OH DEER!

The deer have become quite active this time of year, which means they are on the move and possibly getting into or near your pastures. With the lack of grass, animals may reach over fences or overgraze some areas, increasing the risk they could contract meningeal worm. Be aware of deer activity and realize that besides procedures to keep deer and infected slugs/snails out of the pasture, your best meningeal worm prevention tool is either injectable ivermectin, doramectin or eprinomectin. Be sure to discuss dosages and timing of doses with your veterinarian.

WINTER'S NOT A BREEZE

We love cool breeze in the summer. We open up all the doors and turn on the fans. It helps keep the llamas cool and flies away. Winter is the exact opposite. In fact, you may even have such inclement weather that you keep them completely locked in the barn some days/nights. While that lack of air circulation is good for keeping them warm, it does affect the air quality in the barn, especially if everyone has decided to poop indoors due to the weather! Ammonia odor can build up and if severe, could bother some animals' respiratory tracts. Also, dusty hay won't clear from the air as quickly without a breeze.

Reprinted from Topline, ORVLA, Vol. 35, No. 4, November 2018. □

Calendar of Events 2019

JANUARY

FEBRUARY

February 15, 2019

Deadline for Llama Living

MARCH

APRIL

April 20, 2019

MLA Hobo Show

Hillsdale Fairgrounds

Hillsdale, MI

Contact Tim Douwsma for more information at (574) 606-6182 or tdouwsma@comcast.net

MAY

May 4, 2019

MLA Mid Michigan Show

Eaton County Fairgrounds

Charlotte, MI

For information contact Dave Thompson at (616) 902-2383 or egflamas@yahoo.com

May 15, 2019

Deadline for Llama Living

May 18, 2019

ORVLA Show

For more information check out the ORVLA web site in January.

JUNE

JULY

July 18-20, 2019

Ohio State Fair

For more information about this lama show check out the ORVLA web site in January.

AUGUST

August 15, 2019
Deadline for Llama Living

August 31 - September 1, 2019
MLA Lamafest
MSU Pavilion
East Lansing, MI
Contact Corky Dubois for more information at (616) 902-2382 or egflamas@yahoo.com

SEPTEMBER

September 22-28, 2019
Hillsdale County Fair
Lama Show within those dates.
Contact Gary and Bev Surratt for more information at bgsurratt@tc3net.com

OCTOBER

NOVEMBER

MLA Board/Membership/Election Meeting
More information coming in 2019.

DECEMBER



Michigan Llama Association
Membership Application for 2019

To obtain a copy of the MLA 2019 membership application go to the MLA web site at www.michiganllama.org. Application forms will also appear in the 2019 issues of Llama Living.

2018 LLAMA LIVING ADVERTISERS

Llama Living would like to take this opportunity to thank all of the advertisers who placed their advertisements in Llama Living for 2018. Everyone please take time to look at the advertising information on the back cover of this newsletter and consider advertising your product or service in Llama Living for 2019

ADVERTISERS IN THIS ISSUE OF LLAMA LIVING

Bittersweet Farm	3
Klein Himmel Llamas	14-15
Lash's Unique Animals	5
Miller's LlamaLand	4



Llama Living is a quarterly newsletter published by the Michigan Llama Association.

The opinions and articles in the MLA newsletter, *Llama Living*, are strictly those of the authors and do not necessarily represent those of the MLA or the newsletter editor.

Newsletter deadlines for articles, classified ads, and traditional advertisements are February 15th, May 15th, August 15th and November 15th.

Ads and photos may be sent by e-mail as an attachment in PDF format to GRJax7@springcom.com. Ads appearing in the online version only of *Llama Living* will be in color.

All ads submitted must be positive print ready (no film negatives). For compatible advertising sizes, see next column under, "Advertising Rates". Any ad not meeting listed sizes will be adjusted to accommodate the page.

A discount for multiple ad placement is available. A 10% discount is offered on advertising run for a minimum of two or more issues in the same calendar year. This offer is valid for any size ad, but **MUST** be ordered and **PAID** for at the same time to receive the discount.

All current *Llama Living* accounts must be paid in full prior to the placement of future advertising. Send all checks for advertising, made out to the Michigan Llama Association, articles, classified ads, and camera ready advertisements to:

Llama Living
Suzanne Hockin Frambes, Editor
14775 Peckham Rd.
Albion, MI 49224

ADVERTISING RATES

PRICING

Half Page Back Cover (horizontal 4-3/4 x 6-3/4)	\$55
Full Page (9-1/2 x 6-3/4)	\$40
Half Page (vertical 3-1/4 x 9-1/2) (horizontal 4-3/4 x 6-3/4)	\$25
Quarter Page (4-3/4 x 3-1/4)	\$15
Business Card	\$ 5
Insert (8-1/2 x 11)	\$70

(Check for number required)

Classified Ads - A minimum of \$5 for up to six lines. \$1 for each additional line.

Llama Living

c/o Suzanne Hockin Frambes
14775 Peckham Rd.
Albion, MI 49224

Return Service Requested

TO:

