

Winter 2023-2024



MICHIGAN LLAMA ASSOCIATION LLAMA LIVING

*Hear what
all the
humming is
about.*



Artwork by Renee Hobbins

Winter 2023-2024
Volume 27 Issue 2



www.michiganllama.org



LETTER FROM THE EDITOR



Lamas are becoming a bigger and bigger part of society. The alpaca world has mastered the fiber industry and have a strong network.

I need your help. The MLA is stagnate, we aren't growing yet the llama world is.

I created a survey to get your opinions on how to improve the MLA and help us grow into a nationally recognized organization. This is 100% anonymous.



Aobowling@att.net
231-527-5303

TABLE OF CONTENTS

ADMINISTRATION

Editor's Note <i>by Amy Bowling</i>	<u>3</u>
Current Board	<u>4</u>
Announcements	<u>5</u>



Upcoming Events

Photo Contest	<u>6</u>
December	<u>7</u>
January	<u>8</u>
February	<u>9</u>

LLIVING WITH LLAMAS

Understanding Fleece	<u>10</u>
Classes <i>By Amy Bowling</i>	
Round Bale Feeders	<u>15</u>
<i>By Gary Brant</i>	

Lamafest 2023 - Photos & Fun	<u>24</u>
-----------------------------------------	-----------

Hummdinger Award 2024	<u>25</u>
------------------------------	-----------

Coloring Page	<u>30</u>
----------------------	-----------

By Renee Hobbins

Sponsors	
Lash's Unique Animal	<u>26</u>
Forget me Knot Farm	<u>27</u>
Star Llama Company	<u>28</u>

2024 Membership form	<u>29</u>
-----------------------------	-----------



THE CURRENT BOARD

President
Dave Thompson

Vice President
Tim Smith

Secretary
Corky Dubois

Treasurer
Carmen Hartwig
231-357-6999

Board Member
Bob Minto
231-388-0421

Board Member
Lloyd Lash
517-467-2709

Board Member
Becci Kunkel

Board Member
Amy Bowling
231-527-5303

Board Member
Bob Douglas

Youth Representative
Caitlin Kies

Committee Chairpersons **Membership**

Carmen Hartwig
231-357-6999

Youth Committee
Jennie Hodgen
765-720-7070

Lamafest
Carmen Hartwig
231-357-6999

Spring Fund Raiser
Annette Aldrich
517-675-7705

MLA Scholarship
Mid-Michigan Llama Show
vacant - Volunteer needed
Hobo Hootenanny Llama Show
Amy Bowling
231-527-5303

Marketing
Renee' Hobbins, Julia Tarsa, Sarah Wolf
231-228-6128

WebMaster
Carmen Hartwig
231-357-6999

Wool Committee
Nel Vickers
231-675-7893

ANNOUNCEMENTS

We want to hear
from you!
Please take our
survey to help us
improve our
organization.

Board election
ballots have been
mailed. PLEASE fill
out and return in
the postage paid
envelope.

2024 Membership
forms are
available online or
attached



JOIN THE UGLY SWEATER SNAPSHOT SHINDIG!

It's time to get your llama gang together and gear up for the Ugly Sweater Photo Contest this December! Here's the scoop:

- Strike a pose with your furry friends in your ugliest sweater.
- Submit your snaps to Aobowling@att.net before Dec 17th.
- Get your voting on and support your llama pals by casting your votes online before Dec 29th.



Win a year's worth of free publicity in the Llama Living Newsletter!



MONDAY TUESDAY WEDNESDAY THURSDAY FRIDAY SATURDAY SUNDAY



				1 MLA Board Election Forms Due	2	3
4 MLA Board Meeting 8 PM	5	6	7 	8	9	10
11	12	13	14	15	16 Ugly Sweater Photo Contest Submission Deadline 	17 
18	19	20	21	22 Ugly Sweater Photo Contest Voting Deadline 	23	24
25 	26 	27 	28 	29 	30 	31 





January

MONDAY TUESDAY WEDNESDAY THURSDAY FRIDAY SATURDAY SUNDAY

1 MLA Membership Forms Due	2	3	4	5	6	7
8	9	10	11	12	13	14
15 	16	17	18	19	20	21
22	23	24	25	26	27	28
29	30	31	1	2	3	4
5	6					

February



MONDAY

TUESDAY

WEDNESDAY

THURSDAY

FRIDAY

SATURDAY

SUNDAY

			1	2	3	4
5	6	7	8	9	10	11
12	13	14	15	16	17	18
19	20	21	22	23	24	25
26	27	28	29	1	2	3
4	5	6	7	8	9	10



Understanding Fleece Classes

We all love those adorable faces, individual personalities, and majestic movements. We spend hours and days preparing our gorgeous babies for shows. We evaluate, we groom, and we groom, and we groom some more. Some put more hair products on their llamas than we put on our hair in the 80s. For all of you born after 1980, you should google some pictures.



Before we ever get to this point, we've selected our classes for the show and determined where they will be shown in and why.

When you spot a class labeled "Fleece," what's the first thought that pops into your head?

- Holy cow, that's amazing! Sign me up, pronto!
- Hmm, interesting idea, it sounds like a lot of work. I think it is great but I'm already swamped with to-dos.
- I'm not sure what they're expecting, and I don't want to pay for classes I'm clueless about how to prepare for.
- Fleece is just a distraction, I'm totally focused on the animals themselves.
- Wait, there were fleece classes? Mind blown!

2023 Gathering Class List Fleece Classes	
<p style="text-align: center;"><u>Fleece On</u></p> <p>1. Coat-On - 5 to < than 24 mos 2. Coat-On - 24 mos and older 3. Champion Coat-On 4. Suri - 5 to < than 24 mos 5. Suri - 24 mos and older 6. Champion Fleece-On Suri 7. Double Coat - 5 to < than 24 mos 8. Double Coat - 24 mos and older 9. Champion Fleece-On Double Coat 10. Single Coat - 5 to < than 24 mos 11. Single Coat - 24 mos and older 12. Champion Fleece-On Single Coat</p> <p>13. Best of Show Fleece-On</p>	<p style="text-align: center;"><u>Fleece Product</u></p> <p>24. Felted Item 25. Woven Item 26. Crochet Item 27. Knitted Item 28. Other Fleece Product 29. Handspun Yarn 100% Lama 30. Handspun Yarn > Than 50% Lama 31. Champion Fleece Product (Adult)</p> <p><i>* The Gathering will be holding a "People's Choice" contest for all of the Fleece Products. All entries will be automatically entered.</i></p>
<p style="text-align: center;"><u>Shorn Fleece</u></p> <p>14. Suri - 5 to < than 24 mos 15. Suri - 24 mos and older 16. Champion Shorn Fleece Suri 17. Double Coat - 5 to < than 24 mos 18. Double Coat - 24 mos and older 19. Champion Shorn Fleece Double Coat 20. Single Coat - 5 to < than 24 mos 21. Single Coat - 24 mos and older 22. Champion Shorn Fleece Single Coat</p> <p>23. Best of Show Shorn Fleece</p>	<p style="text-align: center;"><u>Youth Fleece (Shorn)</u></p> <p>32. Junior Youth Shorn Fleece 33. Intermediate Youth Shorn Fleece 34. Senior Youth Shorn Fleece 35. Best of Show Youth Shorn Fleece</p> <p style="text-align: center;"><u>Youth Fleece (Fleece Product)</u></p> <p>36. Youth Felted Item 37. Youth Woven/Crochet/Knitted Item 38. Youth Handspun Yarn 39. Champion Fleece Product (Youth)</p>



Fiber & Fleece

How do I prepare my fleece for entry?

Blow out the llama before shearing

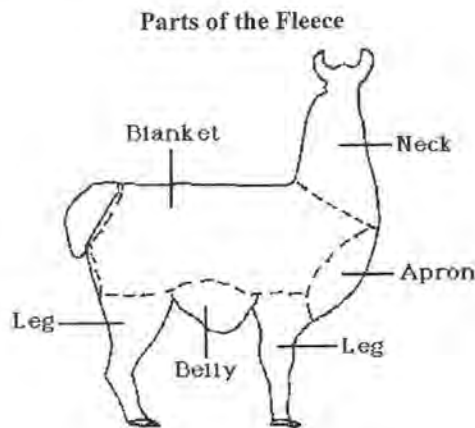
Before shearing, give the llama a thorough surface cleaning with a blower and brush. This should be all that's required. Vegetable matter is easier to remove while the fiber is still on the llama. Don't try to brush out matted fiber -- it's painful for the llama. Use the blower only to remove as much dust as possible. Dust dulls shearing blades

Skirt the fleece

Spread the shorn fleece out, cut side down.

If you do this on a frame covered with hardware cloth or chicken wire, gentle shaking will cause some dirt and debris to fall away. Separate neck and leg fiber from the prime areas on the sides. Pull off the weathered strip from along the backbone and any dirty or matted fiber from the stomach area. Discard any mats that you can't pull apart with your fingers. Don't let cut pieces contaminate the fleece. Turn the fleece over and remove any second cuts. Keep prime and secondary value fiber separate.

D. ILLUSTRATION OF PARTS OF THE FLEECE



Drawing from <http://www.llamapaedia.com>

Store & Label

Put the shorn fiber into old pillowcases or large paper bags. Use plastic for short-term storage only. Label and store with a natural moth repellent, such as cedar blocks or small bags of dried lavender and rosemary, until you're ready to process it. If you're shearing to remove accumulated debris and mats, it's best to discard the fiber -- give it to the birds for their nests or cut it into small pieces for garden mulch.

Record the date and amount of fiber removed. If done on a regular basis, this will give you a measure of the llama's fiber growth rate. Consider having a micron analysis done. These figures could become useful in your promotional efforts.

Fill out your entry tags and place with fleece.

from the [ALSA Llama Fleece Judging Manual](#)

What class should my fleece be entered in?



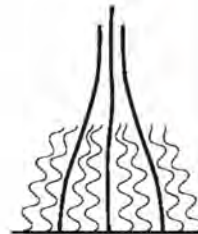
single-coated

SHORN LLAMA FLEECE CLASSES

according to ILR SD Guidelines

Double Fleece with Crimp/Crinkle

- (1) Two discernible layers of fiber
- (2) Guard hair is stiff and coarser
- (3) Undercoat is soft and shorter than the guard hair
- (4) Crimp/Crinkle in the undercoat
- (5) The fleece has loft.



double-coated

Single Fleece with Crimp/Crinkle

- (1) Guard hair is nearly indiscernible
- (2) Little differentiation between guard hair and undercoat
- (3) Fleece has crimp/crinkle
- (4) The fleece has loft.



Single Fleece without Crimp/Crinkle

- (1) Guard hair is nearly indiscernible
- (2) No crimp/crinkle
- (3) Distinct locks
- (4) The fleece has loft.
- (5) Lower lock density and fleece weight than suri



Suri Fleece

- (1) Individual, distinct locks
- (2) No crimp/crinkle
- (3) Cool, slick hand
- (4) High luster
- (5) High lock density and high fleece weight

Tips for Entering Your Fleece in the Right Category

It can be tough to determine which category to enter your fleece in, and even judges encounter intermediate fleeces known as "tweeners". However, don't let this discourage you from entering. Like halter competitions, fleece judges have the ability to "bump" fleeces to a more suitable class. This ensures that your fleece is placed in the appropriate category, giving it a better chance of success.



intermediate-coated

intermediate is the in between of suri and single

Coat on and Fleece on Classes

Coat and Fleece on Classes are a terrific opportunity for you to get feedback directly from the judge as they are evaluating your llama's fleece. The Fleece-on class categories are the same as shorn, except there is a staple length division. ILR SD also adds a "coat on" class that is specific to classic llamas.

One thing the judges prefer with fleece on is the least amount of product as possible. It is much easier to evaluate your llama fleece when it isn't covered in show sheen. I know we all do it for shows, but if you can run to the fleece on before halter that is ideal.

Coat on Classes are for Classic Llamas, as defined by the ILR SD Guidelines.

Coat-On Division

- a) Classic Coat
 - (1) Guard hair is the primary feature
 - (2) Minimal visible undercoat
 - (3) Undercoat of 2.5 inches or less
 - (4) Shoulder and blanket fiber of same length and density
 - (5) Coat may be brushed or shorn



Final Thoughts on Fleece Evaluation for Animal Health

Evaluating an animal's fleece can provide a wealth of information, including their overall health and well-being.

When I was first introduced to fleece classes, I was initially overwhelmed and unsure of what to do. However, as a fleece judge apprentice, I want to pass on my knowledge and encourage others to participate in these events. Don't hesitate to enter your fleece at the next opportunity – **it's a great way to learn and improve!**

How to build Round Bale Feeders that will Improve your Feeding.

- By Gary Brant

Round bale feeders can be part of a streamlined llama breeding operation.

Over time as the llama population increases on your farm it may be efficient to consider adding the round bale option. Feeding chores are simplified as tractors deliver the hay to the feeder. You will probably still sling a few small square bales in pens with single breeding males or pens with a smaller demand. Round bales will soon win you over if you have the numbers to feed, in a reasonable time.



Consider that an adult llama will eat @ 2% of body weight in dry matter per day. Locally sourced 4'x4' bales are @ 5 to 6 hundred pounds. Let us consider 10 adults @300# each. If the pastures were snow covered and the llama's sole source of feed was a 600# round bale, then a bale would last 10 days. There will be some waste pulled to the ground and spoiled, and some rejected stems, so 7-10 days is more normal.

Round bales can be more nutritious and palatable from the same field for a couple of reasons. Round bales generally have more protein value points per ton than small squares. Square bales are harvested in a bale chamber that cuts & bends the forage into square bale shape. The mechanical action of this method causes more leaf loss and thus some lowering in feed value. In addition, multiple bends, brakes, and cuts create more stem ends that could impact a llamas eating desire.

Building Round Bale Feeders Cont.

The younger llamas with a smaller mouth will have more issues with picky ends and bends from square bales. Round bales are cut only at the ground and this leaves only one sharp end. The rest of the stem is rolled up without further bending and cutting. Llamas eating from a round bale will eat entire stems from cut to tip without having to navigate additional prickly cuts and bends. This seems a more palatable choice. We have in fact observed over the years that llamas in the same pen with access to round and square bales will spend more time at the round bales.

The mechanics of pasture traffic patterns is another consideration of round bale feeding. Most round bales are fed outside of a barn. This leaves the design and placement of a feeder a big consideration. Placement requires enough llama access that the hay will be consumed before feed value is lost due to exposure to the elements. We also remove rejected or spoiled hay before we refill with a new bale eliminating contamination from musty bale leftovers. Efficient placement may include building your feeders at a sharing point between 2 or more pastures.

Keep in mind that loading the feeder with a tractor is simplified if you are on high ground, thus avoiding mud or snow issues. If you can locate the feeder where it can be loaded without opening multiple gates, you will thank yourself later. It is challenging to open gates, herd llamas away and move the tractor in and out loaded with hay. Snow, mud, or ice may complicate the task. A 4-wheel drive tractor is helpful as all the weight bears on the front tires when delivering bales. We have used some 4x5 and larger bales that have weighed over 1100 pounds.

Design size, style and type of materials used play an important role in feeder construction. The focus is to get good hay to feed the llamas while protecting feed value. The llamas will spend a lot of time at the feeder, so it needs to be a safe space. We have 7 round bale feeders at Star Llama Company with each new one incorporating thoughtful upgrades. I will skip to the final feeder type and the details that have proven useful.

Building Round Bale Feeders Cont.



Loading with hay is achieved by removing the front 5 pipes and notched upper retainer. You can then load up to a 6' round bale.

This final version is constructed with a metal type roof and a 3-foot overhang. The height at the fascia needs to be higher than the tallest llama can touch.

We have a 6/12 roof pitch for quick diversion of precipitation away from the feeder. From the roof down all wood is cca treated for exposure.

The vertical pipes spaced @ 12" apart allow the neck & head access to the bale. The bottom of the feeder is raised concrete with an elevated dome in the center.

If rain does get in the feeder it drains out under the knee boards keeping the hay as dry as possible. The concrete surrounding the feeder is also tapered away to keep the area mud free. The hard surface around the feeder also helps trim toenails.

The knee boards are as high as an average llama's front legs. The knee board height also helps contain the loose hay as they eat so it is not pulled to the ground and spoiled.

Building Round Bale Feeders Cont.



We have also deterred birds by blocking potential nesting areas.



No ceiling joists were used in this design to allow plenty of room to tip the bale into position.

Building Round Bale Feeders Cont.

The feeder is positioned for 360 access from 6 different pens. Individual gates surrounding the area can be opened or closed to allow seasonal or rotation patterns.



The feeder is also positioned to exclude llama interaction while loading a bale by closing several gates

Llama Care

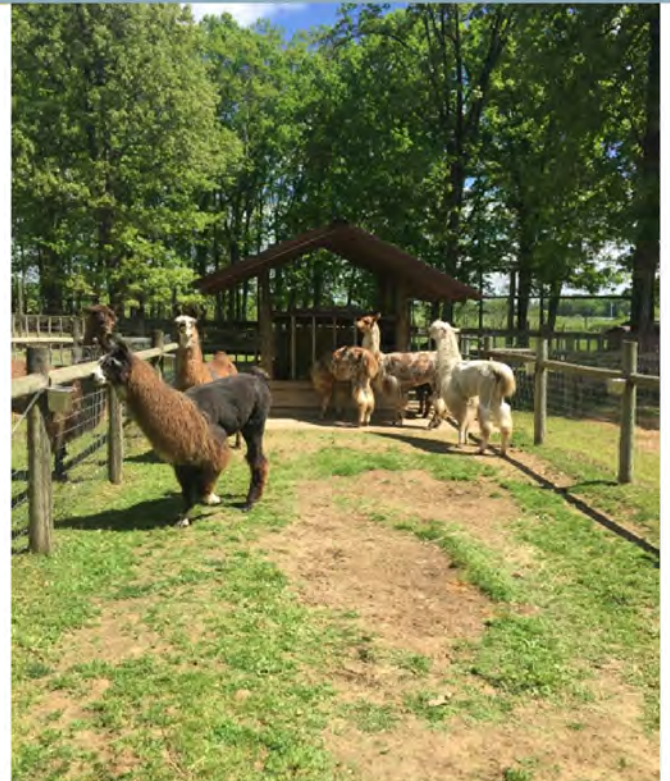
Building Round Bale Feeders Cont.



The north side feeds adult breeding males separated with a male safe fence.

A google satellite image of the farm will show pasture flow to the feeder.

A new bale always brings in a group of taste testers.



Building Round Bale Feeders Cont.



We have a couple of other versions that are pasture specific. One that splits 2 larger pastures is situated on a fence line.

It is some distance from the main barn and allows a secondary feed choice. Multiple feed stations afford the benefit mixing forage types like alfalfa or grasses.



Shade shelters are not uncommon for llama housing. This shelter has an attached round bale feeder big enough for 4x4 bales.

The feeder can be loaded from an access aisle without entering the pasture. Hard surfaces control ground softness. Feed can be accessed from both sides so timid llamas have options.

Building Round Bale Feeders Cont.



Another design is a double round bale feeder. This feeder is easy to fill with a tractor or truck. It can be loaded without entering the pasture by rolling a bale right from the truck or trailer. There is a large concrete apron around this feeder. Bales rest inside the feeder on a raised treated wood floor with spacing to allow chaff and water to exit

This feeder is supplemental to @ 35-acre pasture. In the growing season we always keep hay available but of course they would rather have fresh salad. Wintertime is the most used season with generally 20 to 30 adult females sharing this feed station.



Building Round Bale Feeders Cont.



A few random RB (round bale) feeding TIPS to think about. **Store RB's in a protected environment. Ideally a closed barn will slow oxidation and loss of protein.

**Poly netting on round bales must be completely removed at feeding. The floss like strands could cause digestive distress in the extensive llama intestinal system. **Keep an eye out for foreign objects that got rolled up with the bale. A crushed can may not be a problem, but a deflated mylar balloon with ribbons attached just might be. A side effect of dry forage feeding for some adult llamas is the naked nose. As llamas burrow into a RB in search of the "good stuff" the top of the nose loses fiber coverage in the process. We refer to this as round bale syndrome and topical zinc oxide can be helpful.

If you are considering adding round bales to your feeding regime, go ahead and build yourself and your llamas one. You can always put small squares in it until you are ready to move up. Looking back after 37 years of raising llamas I wonder how we ever got along without them.

Gary Brant

Celebrates 30 years!



Special Recognition

Humm Dinger

2023



In 1997, the Humm Dinger Award was established to recognize exceptional contributions to MLA and the broader llama community. This year's recipient has been an integral part of the organization since its inception. However, their behind-the-scenes contributions may surprise you.

During the early days of the Lama Select Sale, they played a pivotal role in recruiting high-quality sales animals to ensure the event's success. Their financial support, novel concepts, and innovative programs have made our shows enjoyable and productive.

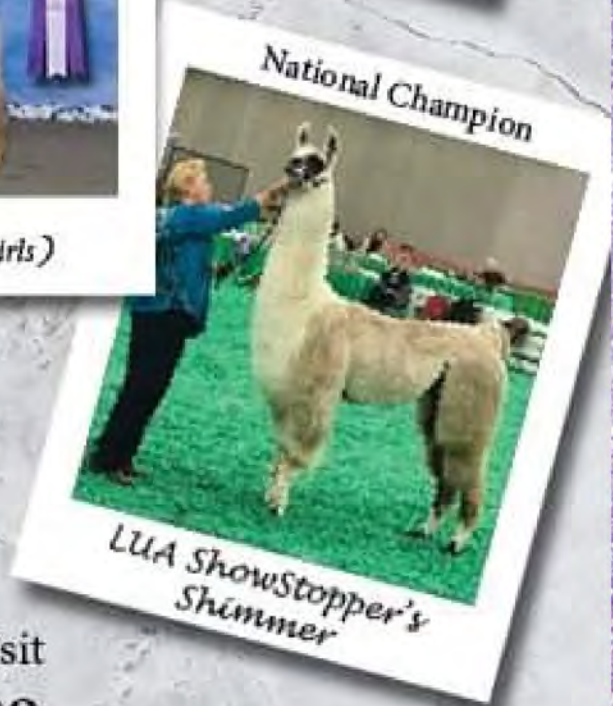
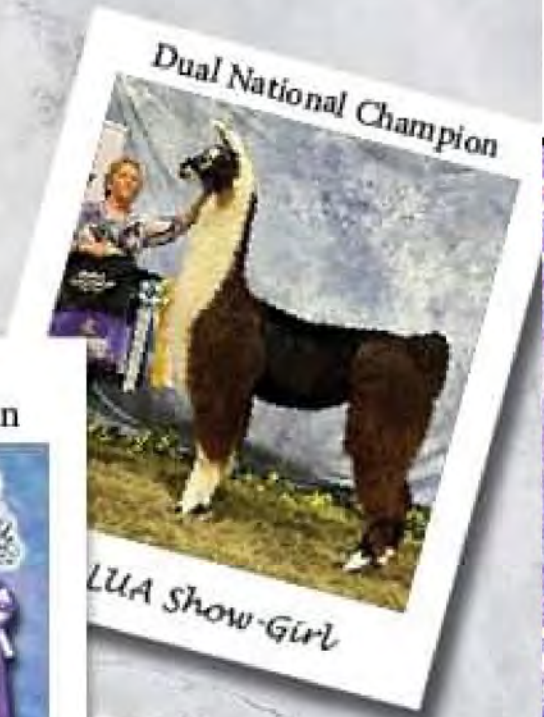
Moreover, this individual has been instrumental in keeping llama shows vibrant and flourishing in Michigan, a feat no one else could accomplish. And finally, their llamas are stunningly beautiful.

We proudly present this year's Humm Dinger Award to...

*Lloyd &
Tami
Lash*



National Champions



Manitou Beach, MI

Schedule Your Farm Visit
Call 517.467.2709

Visit Us Online
www.LashsUniqueAnimals.com

FORGET ME KNOT FARM

Formerly: Agape Llama Acres



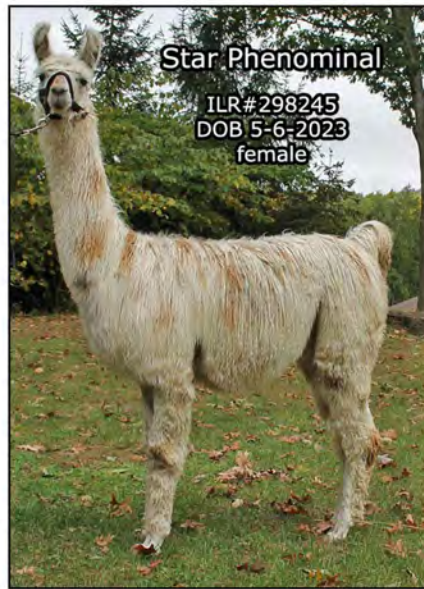
For the Love of Llamas

agapellamaacres.com
Big Rapids, MI



Star Perfect Princess

ILR# 298243
DOB 5-14-2023
female



Star Phenominal

ILR# 298245
DOB 5-6-2023
female



Star Anomaly

ILR# 298244
DOB 5-15-2023
female

Over 40 years raising quality llamas in the great state of Michigan



Star Phantom Passion

ILR# 298241
DOB 6-5-2023
female

QUALITY BREEDING STOCK FOR SALE

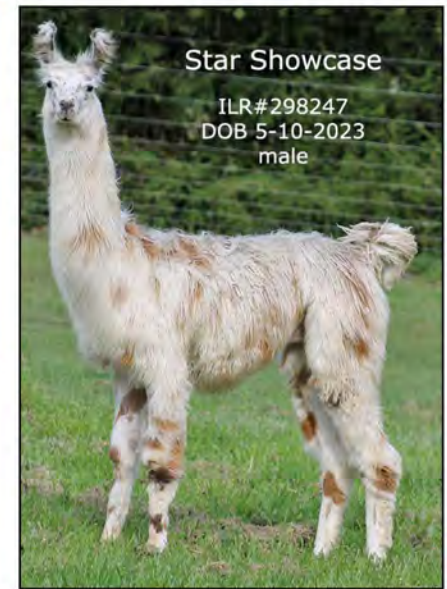


QUALITY SURI BLOODLINES AVAILABLE

STAR LLAMA COMPANY

Janet & Gary Brant
8799 Muehleisen Rd
Dundee, MI 48131
734 660 3124
www.starllama.com

established 1983

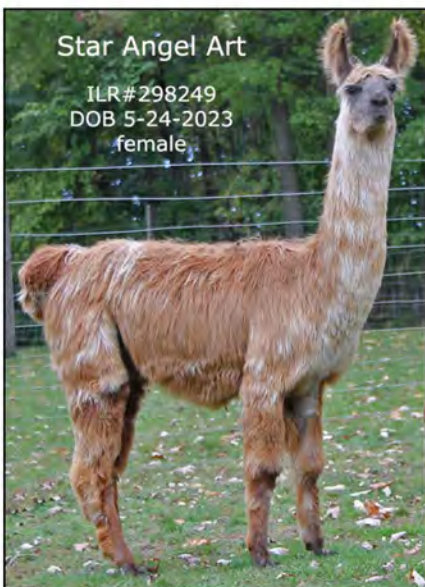


Star Showcase

ILR# 298247
DOB 5-10-2023
male

Pictured llamas are currently available

Interested? give us a call 734-660-3124 or send an email brantgm@gmail.com



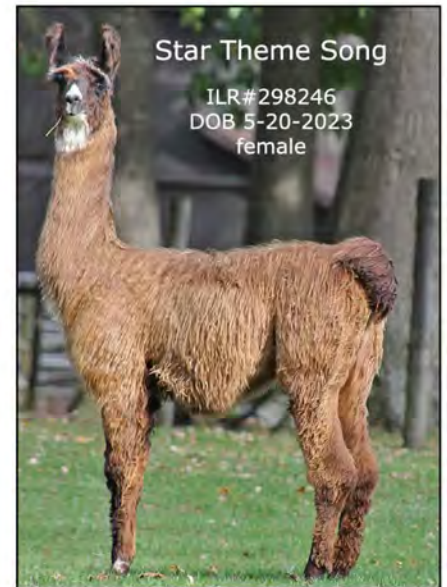
Star Angel Art

ILR# 298249
DOB 5-24-2023
female



Star Frosted Passion

ILR# 298242
DOB 5-28-2023
female



Star Theme Song

ILR# 298246
DOB 5-20-2023
female

2024 MLA Membership Application

The following information will comprise your listing in the MLA Directory. *Indicates **REQUIRED** information.

*LAST NAME _____

*FIRST NAME _____

ADDITIONAL NAMES _____

FARM/BUSINESS NAME _____

*ADDRESS _____

*CITY _____ *STATE _____ *ZIP _____

PHONE Cell _____ Home _____

*E-MAIL _____

WEB SITE ADDRESS _____

SPECIALTIES _____

LLAMA LIVING NEWSLETTER

Online versions in color pdf format are always free. Hard copies are available, for an additional fee of **\$12. per year added to your membership fee. Please include check with your membership**

___ NEW MEMBERSHIP (\$25)

___ RENEWAL (\$25)

___ FARM/FAMILY(\$25)

___ VET/VET STUDENT (\$15)

___ YOUTH MEMBERSHIP (\$15)

___ HARD COPY OF LLAMA LIVING (\$12)

Birthdate _____

TOTAL ENCLOSED:

Advertising opportunities are available in both the Membership Directory and the Newsletter.

Check it out at www.michiganllama.org or our Facebook page

For inclusion in the MLA Directory, send this form and check or money order payable To MLA, no later than January 31, 2024 to: MLA Treas, Carmen Hartwig, 4152 Shady Nook Rd, Central Lake, MI 49622 hartwig@torchlake.com

