




About us.

Having worked in the kiln and renewable energy industries for over a decade, we saw the necessity to venture into the kiln and incineration sector for the purpose of providing affordable as well as sustainable alternative to the openly burn of waste and the production of earthenware products.

Our goals are to provide suitable solutions which are affordable for disposing off all your general and medical waste with the highest quality standard and assured technology at hand.

 +447740007312, +233554447550

 enquiries@pikinnovations.com

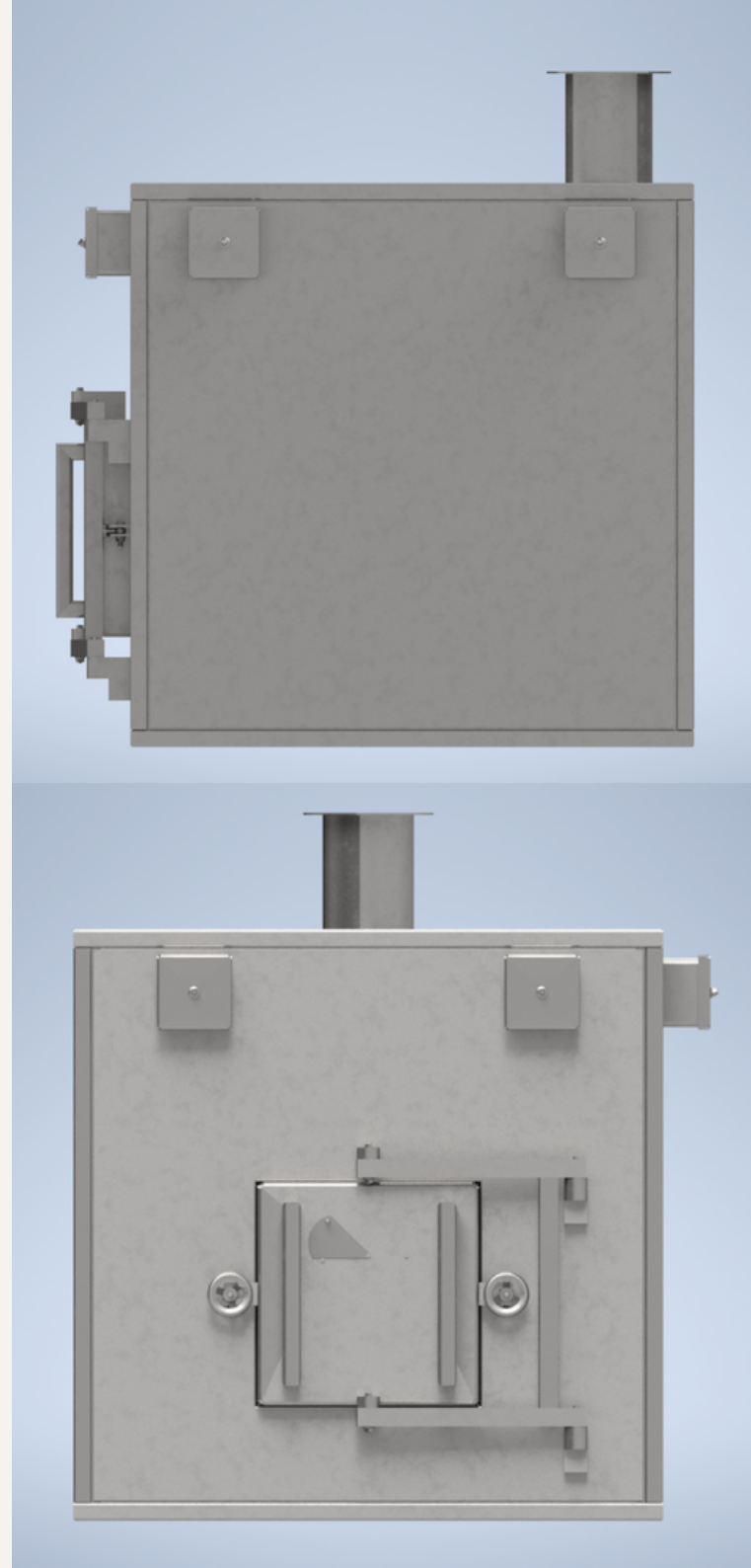
Together we can save the future

The management of waste has been a significant challenge in many communities worldwide. The increasing population and industrialization have led to the accumulation of waste, which poses a threat to the environment and human health. One of the most effective ways of managing waste is through incineration.

Incineration is a sustainable way of managing waste. It reduces the amount of waste that ends up in landfills, generates electricity, and effectively manages hazardous waste. Modern incinerators are designed to minimize emissions and meet strict environmental regulations. With proper management and regulation, incineration can be a safe and effective way of managing waste.

 www.pikinnovations.com

 Weston Road, Stafford, Uk



Product and services

- Provide customised specifications
- In-house design and development
- Provide installation, maintenance and servicing

PI-23 General Waste Incinerator

- 50-80kg/hr
- Temperature up to 900 degrees Celsius
- Manually operated system
- Designed to have a low maintenance capacity
- Has a double combustion chamber
- Lasting up to 20 years
- Can be upgraded with burners

PI-24 Medical Waste Incinerator

- 50-200kg/hr
- Temperature up to 1300 degrees Celsius
- Manually operated system
- Designed to have a low maintenance capacity
- Has a double combustion chamber
- Lasting up to 20 years
- 50k BTU burner upgrade

Environmentally Friendly

- ISO 9001 certified

