



Lambda Log

CHI OMEGA AT THE UNIVERSITY OF KANSAS

OUR CHI OMEGA HOME

Preserving Our Beautiful House for Nearly 100 Years

I was speaking with a Lambda alumna last month and shared with her that, in 2025, our beloved Chapter House at 1345 W. Campus Road will officially turn 100 years old. Since that conversation, I have reflected on the last 25 years and the numerous projects that have been completed to maintain our historic home. In 1999-2000, the House Corporation Board and Lambda Owl Foundation worked diligently to raise \$1 million to address the many needs of the 75-year-old house at that time. The installation of a city-required sprinkler system, reconfiguration of the second- and third-floor rooms to separate the sleeping and study spaces, creation of a computer room, installation of house-wide internet, expansion of the north-wing bathrooms on both floors, and many updates to the first-floor furnishings are just a few of the projects we tackled.

In the past 15 years, the house needed a new slate roof, tuckpointing of the brick exterior, replacement of the tube room and dining room flooring, replacement of the boiler and chiller, and installation of hot water heaters and radiator units throughout the entire house. While these projects might not have been flashy, they were integral to preserving our home for decades to come.

House Corporation did make some enhancements that our undergraduate women continue to enjoy on a daily basis, including the new kitchenette, renovation of the computer room into a study space, and the addition of the beautiful Thomas Terrace. First-floor furnishings continued to be updated and recovered throughout, and we were even able to restore the 1923 piano that remains in the living room to this day (we continue to be told that this was one of the first pieces of furniture purchased for this house). And of course, the renovations to the bedrooms that took place in the summer of 2021 are simply stunning!

The preservation of our Lambda home would not have been possible were it not for the hundreds of hours committed to these projects over the years by our wonderful House Corporation Board and the many years of leadership from **Stacey Satterthwaite Dillon '76** and **Lorie Kuchem Doolittle-Bowman '77**. Our home continues to be a source of pride for all of us. **Please mark your calendars as we plan the 100-year celebration of our Lambda home on April 12, 2025.**

Loyally,
Jennifer Inskeep Godar '92
Lambda Owl Foundation President

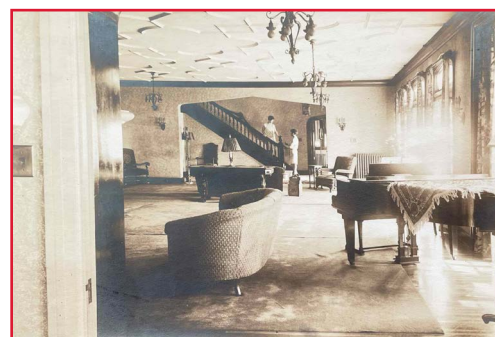


So much love and laughter have traveled through the halls of our beautiful home over the last 98 years. We can't wait to celebrate 100!

Thank you to all alumnae and friends who have donated to Lambda!

Your dollars have helped make our home what it is today and prepared it for tomorrow.

THANK YOU!



The living room in 1928.



Times May Have Changed, but Sisterhood Remains

A Note from Our Personnel Advisor

Hairstyles and hand signs change over time, but sisterhood is for life!

I thought it would be fun to give you some insight into advising today's college students and Lambda Chapter. When I became personnel advisor in 2015, I vividly remember the living room being turned into "Club Chi O" for a recruitment skit. Now, KU and most campuses follow the NPC guidelines of "no frills" recruitment, which means no skits and none of those special cakes with your names on them. The focus is more on the potential new members and your conversations. There are still many late nights, but I do miss the funny skits and cute cakes!

(Continued on page 2)



Times May Have Changed, but Sisterhood Remains

(Continued from page 1)

As you can imagine, the pandemic derailed our in-person events, and we are finally getting back to a more normal schedule. Having Chapter on Zoom and trying to keep members engaged was challenging, but it also gave us new ways to build relationships. I'm most excited about a national program called "Sisterhood Chats" that we do once a semester; it provides a unique opportunity for small groups to talk to members in different pledge classes about everything from diversity and inclusion to mental health. We've added a Director of Diversity, Equity, and Inclusion and a Director of Programming to the executive board; it is now up to 12 officers.

I am proud to serve Chi Omega locally with Lambda and through headquarters on the National Advisory Training Team. I am greatly humbled to have received the 2022 Chi Omega of the Year Award from the Greater Kansas City Chi Omega Alumnae Association for my 10 years serving on the board and representing Chi Omega as our 2023 Alumnae Panhellenic Woman of the Year recipient.

Some things never change, and Lambda continues to make excellent grades, win Rock Chalk Revue awards, and be amazing leaders on campus. It is such an honor to work with our young women!

Thank you for your continued support and love for Lambda!

Loyally,
Jennifer Mueller Alderdice,
Kappa Alpha '91
Personnel Advisor



Our executive board and Cardinal Cabinet with the Chi Omega National Leadership Consultant, Alexis.

LIVING OUT OUR SYMPHONY *SISTERS STRIVE FOR THE BEST*

We have had an exciting year at Lambda full of fun and sisterhood. In February, we participated in another great Rock Chalk Revue with the men of Delta Tau Delta. Thanks to the talent of our directors, **Abby Harding '20**, **Caroline Snapp '20**, and **Megan Machloch '21**, our show, *One Night in Naismith*, was a success! The cast took home awards for Best Video, Best Set, Best Supporting Male, and Best Male Lead.

As always, scholarship remains a top priority for the women of Lambda, and this past fall was no exception. We had a 3.68 cumulative GPA and ranked second in the Panhellenic community. Scholarship Chairman **Sejal Thapa '20** hosted our scholarship banquet on April 24 to honor our members' academic achievements!

Our newly slated executive board had the opportunity to attend Chi Omega Firesides Leadership Training this past January. **Jen Alderdice, Kappa Alpha '91**, Personnel Chairman **Becca Jones '20**, and I traveled to Denver for the conference. We listened to S.H. Laura Miller give the State of the Fraternity address and met Chi Omega leaders from all over the country.

While all of these accomplishments are amazing, I believe our most important accomplishment is having a Chapter of 246 amazing women who live out the Chi Omega Symphony every day. The women of Lambda are genuine, kind, driven, and caring. They are womanly always, discouraged never, and have the welfare of Chi Omega ever at heart. I feel incredibly fortunate to be leading this Chapter and seeing its legacy be carried out by members day in and day out.

Loyally,
Ava Lemon '21, Chapter President



Our Founder's Day celebration calls for some cake!

Learning Outside the Classroom

Alumnae Mentorship Builds Stronger Sorority Women

Beyond the perks of a full social calendar, living in the Chapter House, and forming enduring friendships with sisters, being a member of Chi Omega meant having the resources to build our futures—including a built-in network of alumnae. Connecting with alumnae is one of the best ways for collegiate members to prepare for their careers, and universities across the nation promote alumnae mentoring programs. Alumnae mentorship can lead to job offers and crucial career advice as well as give our sisters the confidence they need to take on the workforce.

Why Is Mentorship Essential?

According to *Forbes* magazine in January 2019, mentorship is so vital to the success of a business that 71% of Fortune 500 companies offer a mentoring program. Establishing mentorships in college can be just as important. A 2013 Gallup-Purdue poll found that support and experiences in college, rather than what college they

chose, had more of a connection to long-term results for college graduates. It's the learning outside the classroom that can make the most impact.

What Makes a Good Mentor?

Faculty advisors are great support systems for our members, but our alumnae are in a unique position to help. We've been in their shoes already. We understand the rigorous academic standards of our university and we know how to balance school and the sorority. The network Lambda Chapter provides is invaluable as undergraduates navigate their way from the classroom to board room.

But mentorship isn't only for collegians.

All of us know sisters who started their careers through an alumnae connection. Whether writing a letter of recommendation or sharing a job opening on our Facebook page, we can help each other advance in our professions. Chi Omega recently

launched a new service for all alumnae, Chi O & Co. This new platform offers coaching, community and connection for anyone seeking a network. Think of it like LinkedIn for Chi Omega! You can learn more and sign up at chioandco.com.

How Can I Be a Mentor?

Mentorship doesn't have to be a huge time commitment. You can serve on the House Corporation or as an advisor, attend a Lambda Chapter meeting to share job advice, or simply share your email with undergraduates to be a resource for those interested in your field of work. No matter the level of commitment, knowing you're furthering the future of our Chapter and its members is immeasurably rewarding.

If you're interested in serving as a mentor, please reach out to:

Cindy White Kraus, Chi Epsilon '14
Career and Personal Development Advisor
cindy.white1995@gmail.com

CHAPTER OFFICERS

President
Ava Lemon '21

Treasurer
Iris Sherron '21

Director of Programming
Clare Heaton '20

Panhellenic Delegate
Grace Hills '21

Vice President
Sejal Thapa '20

New Member Educator
Emma Cass '21

Personnel Chairman
Becca Jones '20

House Manager
Jeanne Eckels '21

Secretary
Kate Vankeirsbilck '21

Recruitment Chairman
Claire Savage '21
kuchio.recruitment@gmail.com

Diversity and
Inclusion Chairman
Maggie Grandsire '20

Social Chairman
Katie Raymond '21

THANK YOU
FOR SERVING
OUR CHAPTER!



CHAPTER GOALS

To make a full post-pandemic return! Since the pandemic forced us to change the way we operated, some norms and traditions were forgotten. Our largest goal as an executive board is to learn how Lambda operated pre-pandemic and determine what we want to bring back.

To have a larger focus on the mental health of our members. We have a "mental health room" in the house this year where members can go to take a break and have some quiet. We also have brought in mental health speakers who teach the Chapter important lessons on maintaining their mental and physical well-being.



A new awning graces the back door thanks to the Chi Omega Parents Club!



Lambda Owl Foundation
4000 W. 6th St., Ste. B #103
Lawrence, KS 66049

Lambda Log

CHI OMEGA AT THE UNIVERSITY OF KANSAS

Who Do You Suggest?

For Future Alumnae Features in *Lambda Log*

We need your suggestions for our next spotlight feature, which highlights the accomplishments and successes of sisters since they've become alumnae of Chi Omega.

We know that our alumnae community is filled with accomplished and successful individuals who are making a difference in their fields, communities, and beyond, and this is your chance to illuminate the work of someone you know who has made a meaningful impact in the world. Help us showcase the incredible talent of our sisters and inspire current and future Chi Omegas to strive for excellence!

Please take a moment to think about someone you know who deserves to be recognized for their accomplishments.

By submitting your candidate, you will not only be celebrating the achievements of someone you admire, but you will also be helping to inspire others and build a stronger alumnae network.

Submitting a recommendation is easy!

Simply send the name of the person, along with a brief description of why you think they should be featured, to our communications coordinator, **Caroline Turlington Hammond, Eta Gamma '05**, at chammond@penningtonco.com with "Chi Omega KU Spotlight" in the subject line.

Thank you for your help in recognizing remarkable Lambdas. We look forward to hearing from you and sharing their inspiring stories.



**SAVE
THE
DATE**

**OUR BELOVED
LAMBDA HOME IS
TURNING 100!**

Mark your calendars for **April 12, 2025**, for a centennial celebration at 1345 W. Campus Road.

Watch for more details in the coming months, and find more information about our historic home inside!



ku.chiomega.com



@kansaschiomega



Chi Omega Lambda



University of Kansas Chi Omega - Lambda Chapter | Chi Omega - Lambda Chapter Alumnae
Contact Jan Seymour Jenkins '72 at creativityshop@aol.com for an invitation to the group.