

# PROGRESS

---

## SOLAR SOLUTIONS®

- NO REFUELING
- LESS MAINTENANCE
- SET IT AND FORGET IT



[progresssolarsolutions.com](http://progresssolarsolutions.com)

## MOBILE SOLAR HYBRID LIGHT TOWER



SHYB

## MOBILE SOLAR LIGHT TOWER



SLT

## Eco MOBILE SOLAR LIGHT TOWER



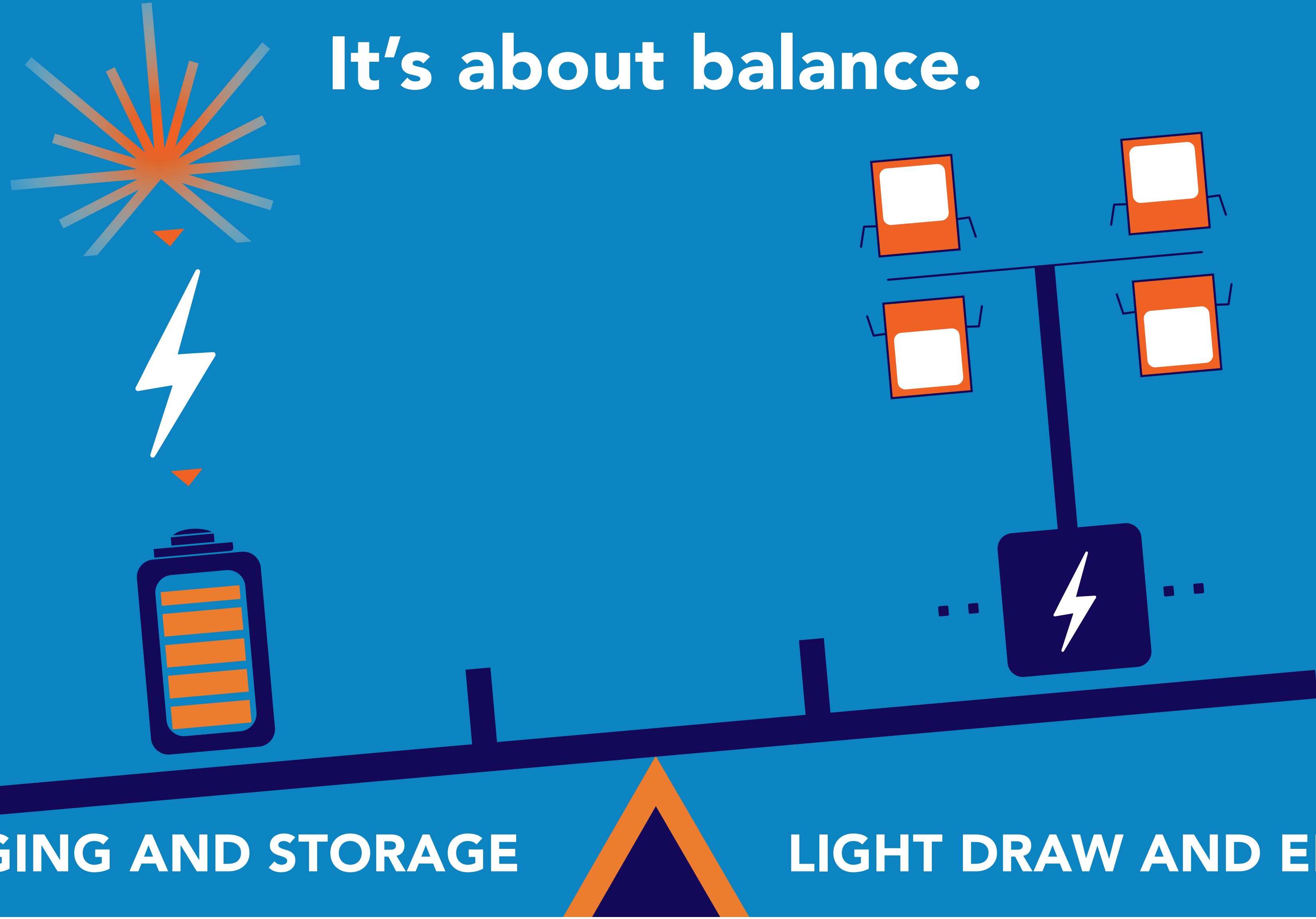
SLT-Eco

## 2024 UPGRADES:

- Improved LED technology with 10% more efficient flood lights that are even brighter!
- Faster charging rates with new solar charge controller technology!
- New SLT-Eco model with lower price point!
- Overhead lift option available!
- Fit Eight (8) units to a standard 48' flatbed truck



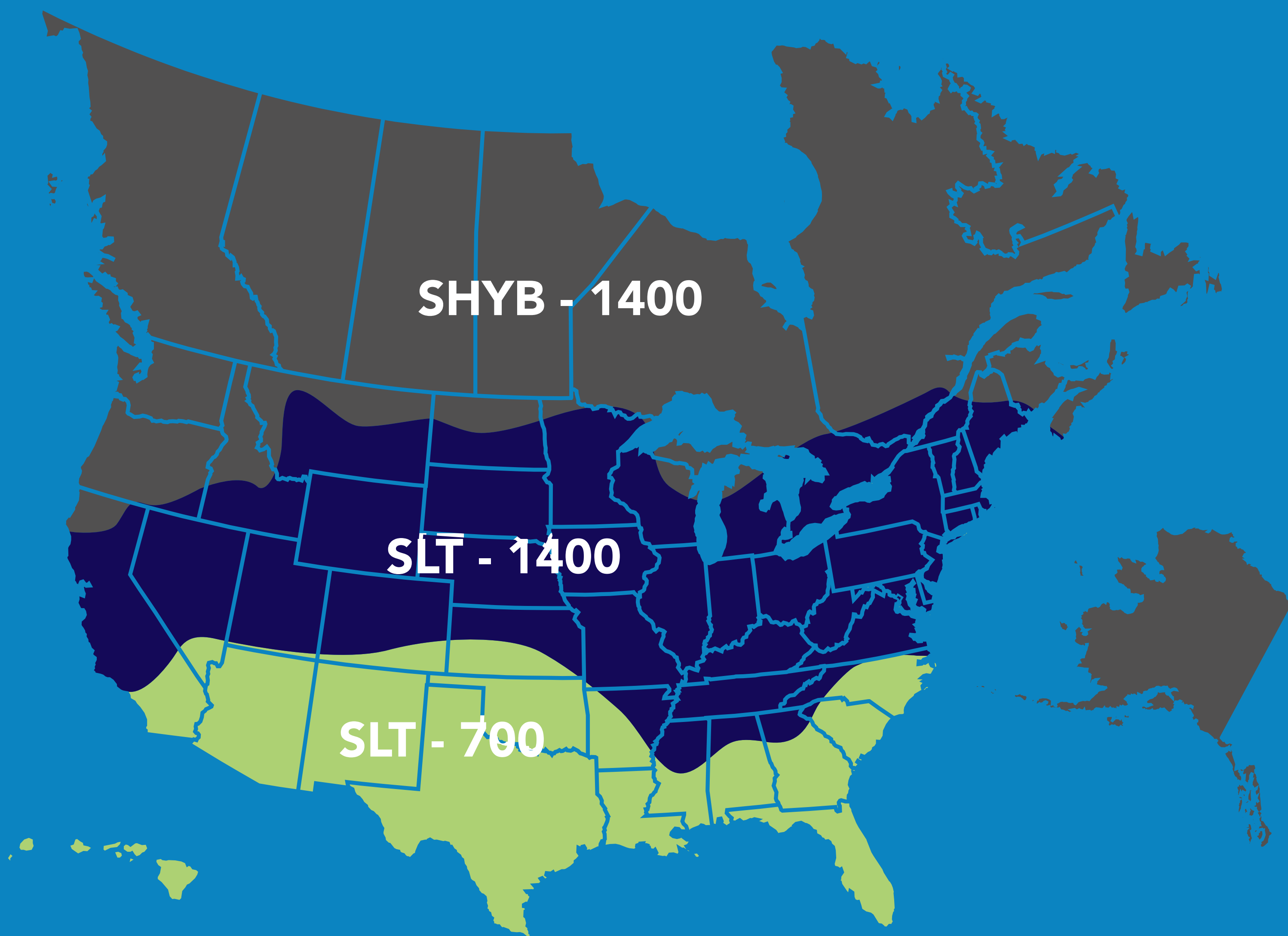
It's about balance.



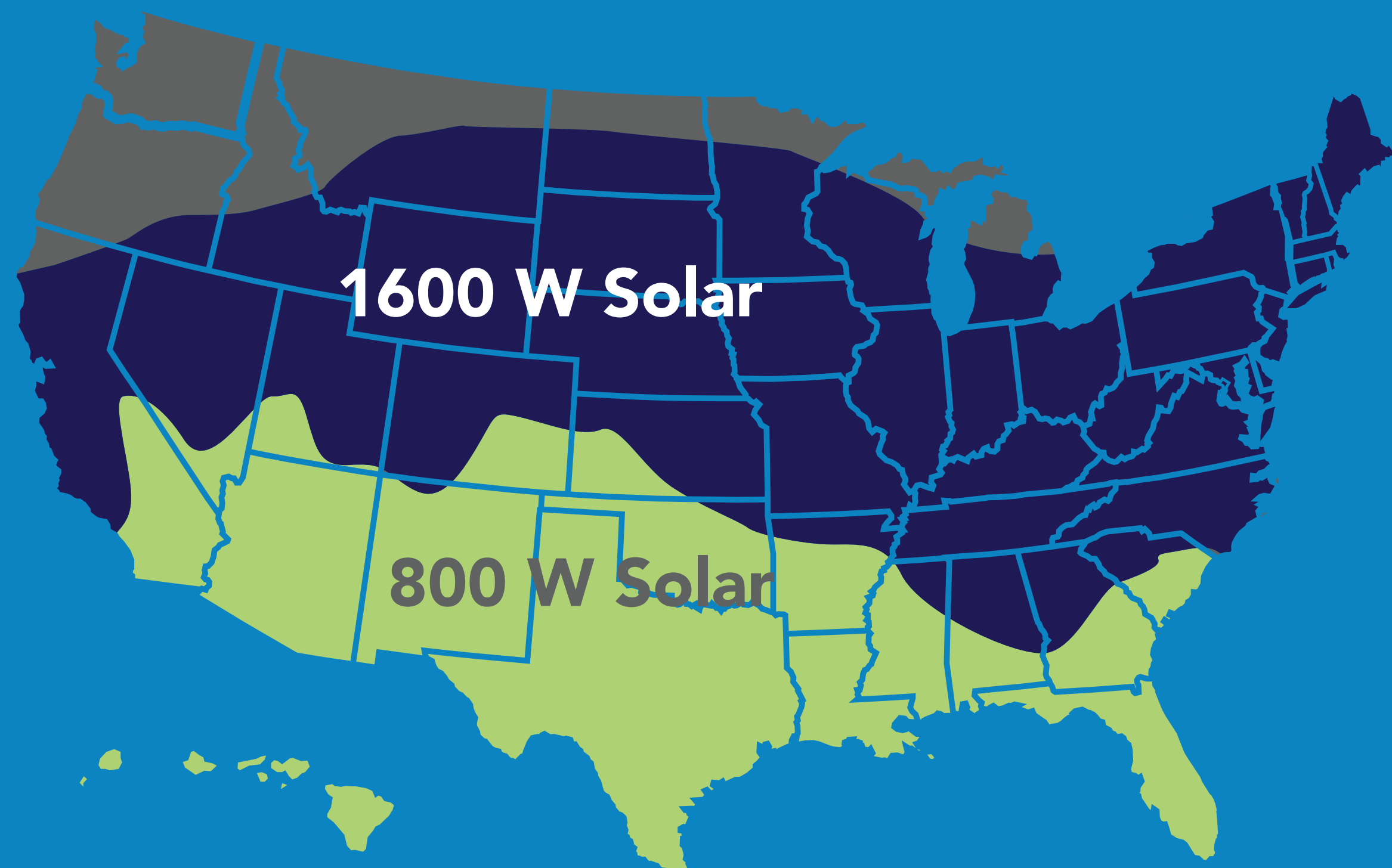
CHARGING AND STORAGE

LIGHT DRAW AND EFFICIENCY

SLT/SHYB



SLT-ECO



\*Highlighted regions show models available for year round use without human action with proper setup



# TABLE OF STANDARD FEATURES & OPTIONS

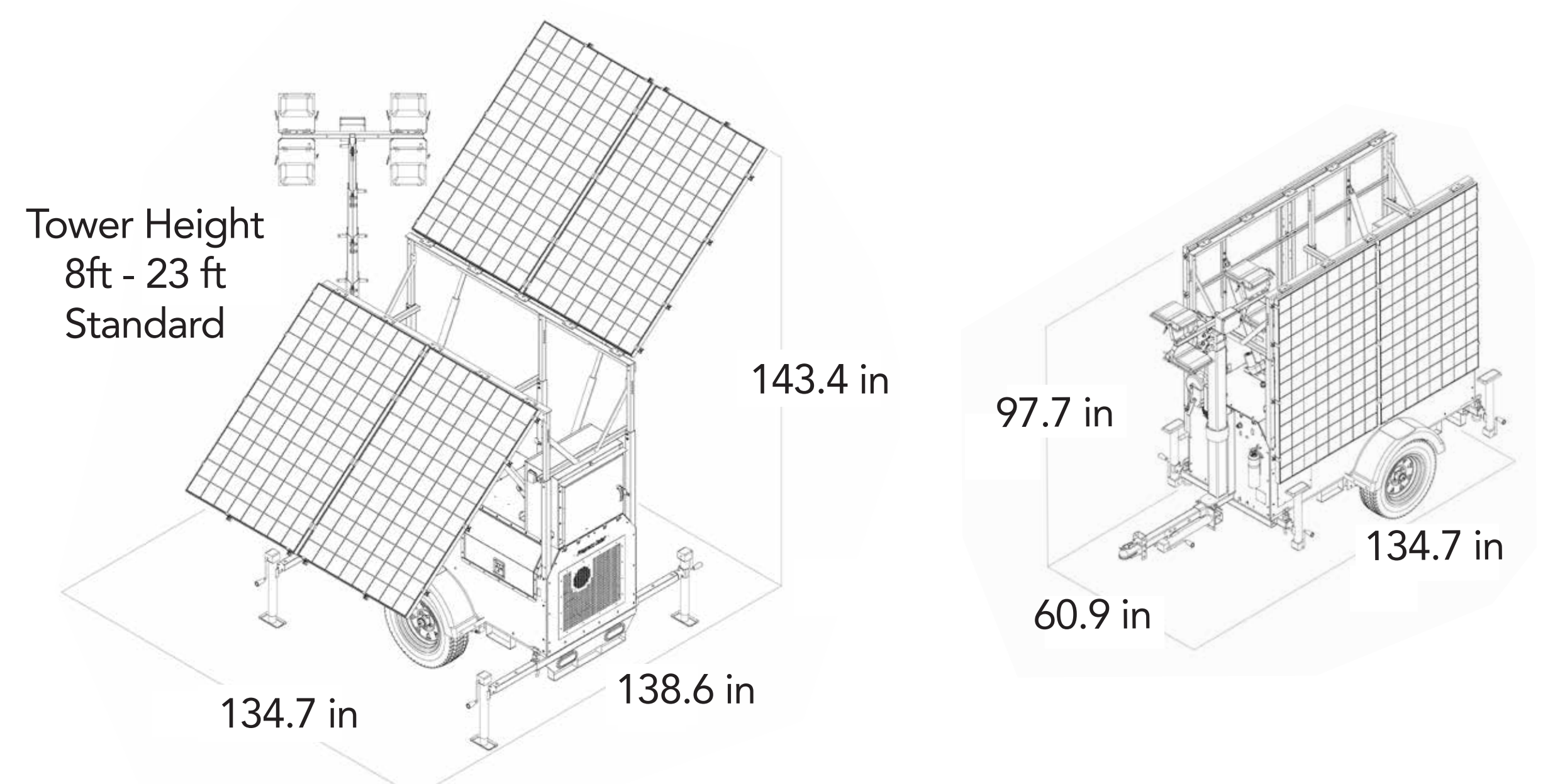
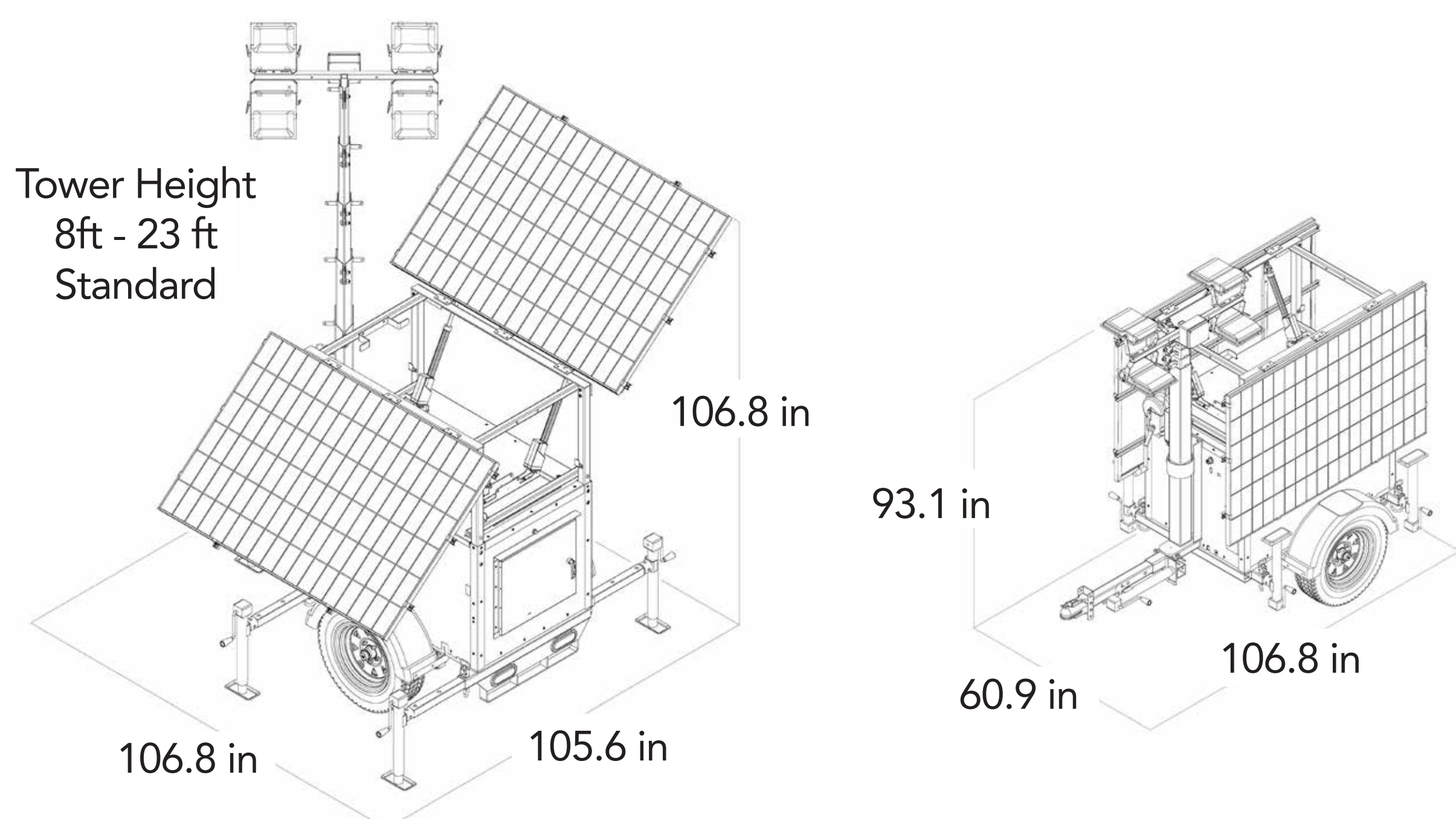
√ Included Standard  
A - Available Options  
NA - Not Available

FEATURED OPTIONS	SLT700	SLTEco	SLT1400	SLTW700	SLTW1400	SHYB1400 DSL	SHYB1400 LPG
52,000 lumens of high efficiency LED light	√	NA	√	√	√	√	√
39,000 lumens of high efficiency LED light	NA	√	NA	NA	NA	NA	NA
23' rotatable vertical tower rated for 70mph+	√	√	√	√	√	√	√
Easy, one person setup and transport	√	√	√	√	√	√	√
Photocell and timer for set it and forget it functionality	√	√	√	√	√	√	√
36-42 hrs of stored light on a full charge	√	NA	√	√	√	√	√
26-32 hrs of stored light on a full charge	NA	√	NA	NA	NA	NA	NA
No maintenance batteries	√	√	√	√	√	√	√
Ball or lunette ring for towing	√	√	√	√	√	√	√
Battery state-of-charge meter	√	√	√	√	√	√	√
Tie downs for shipping and Forklift guides	√	√	√	√	√	√	√
AC (shore) charging -110V AC or 230V AC	√	√	√	√	√	√	√
Stabilization jacks	√	√	√	√	√	√	√
Removable tongue for security	√	√	√	√	√	√	√
Pad lockable access	√	√	√	√	√	√	√
200 Watt Wind Turbine	A	A	A	√	√	A	A
30 Foot Tower	A	A	A	A	A	A	A
Additional battery storage	A	A	A	A	A	A	A
Up to 62K lumens of LED lighting	A	A	A	A	A	A	A
AC Power output with Sine quality 2kW or 4kW Inverter	NA	NA	NA	NA	NA	A	A
USB charging	A	A	A	A	A	A	A
Strobe light (w/ color choice)	A	A	A	A	A	A	A
Emergency Alarm	A	A	A	A	A	A	A
High wind stabilization package	A	A	√	A	√	√	√
Additional cold weather insulation	A	A	A	A	A	A	A

## SLT

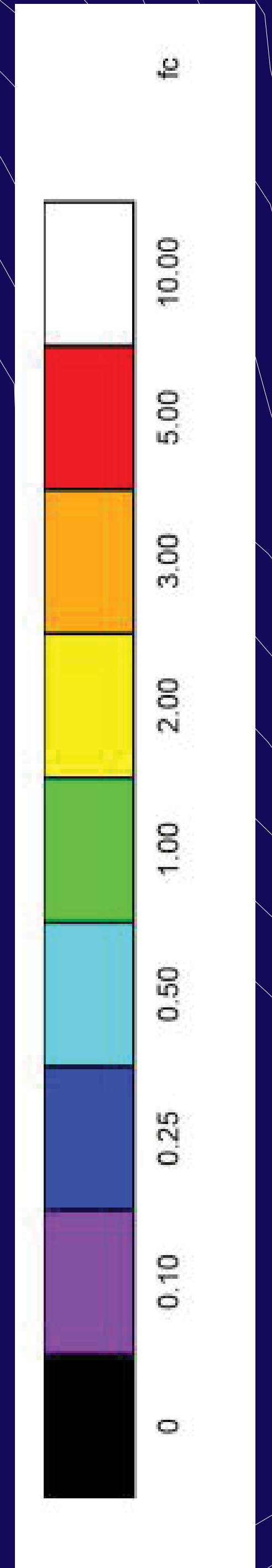
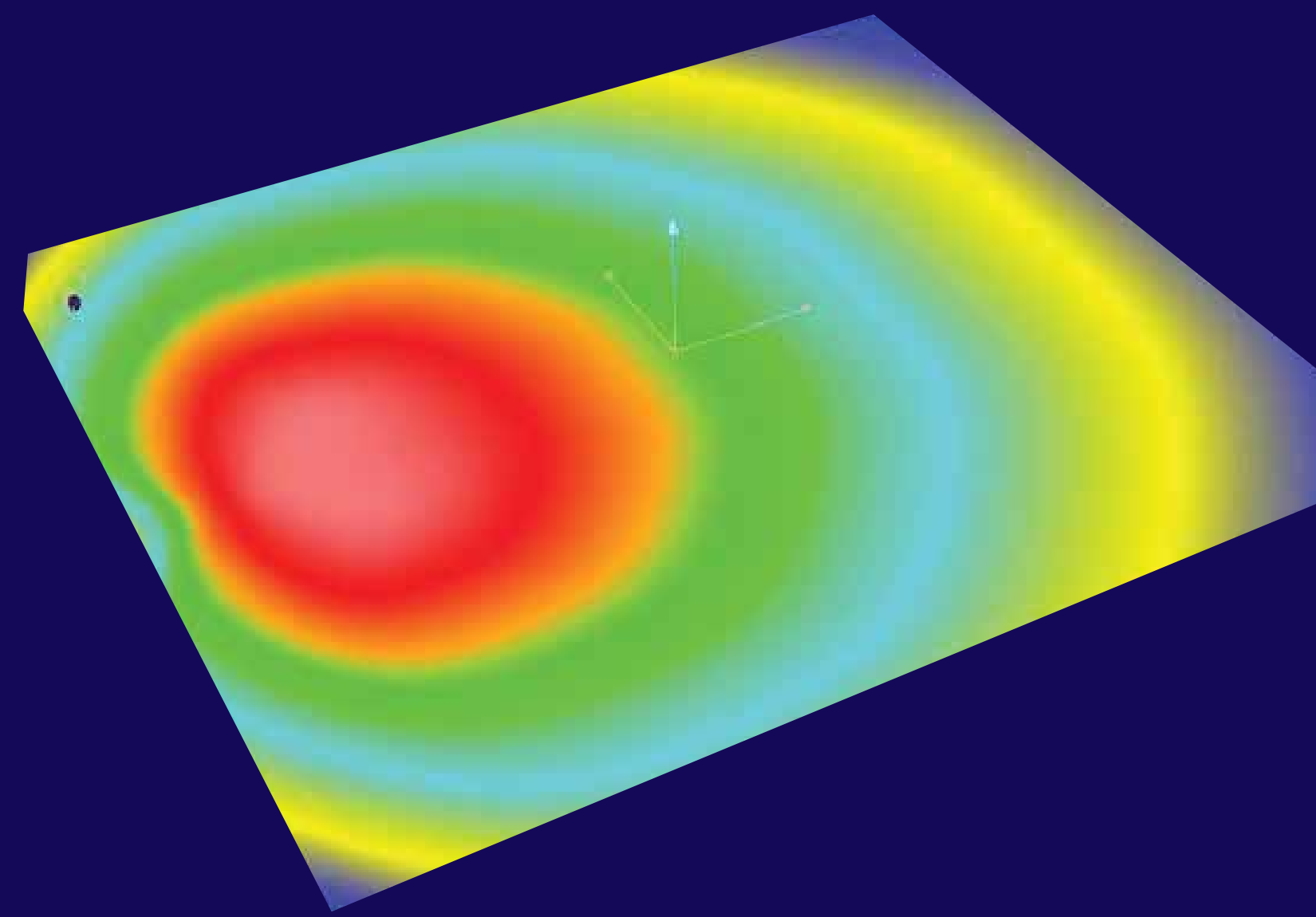
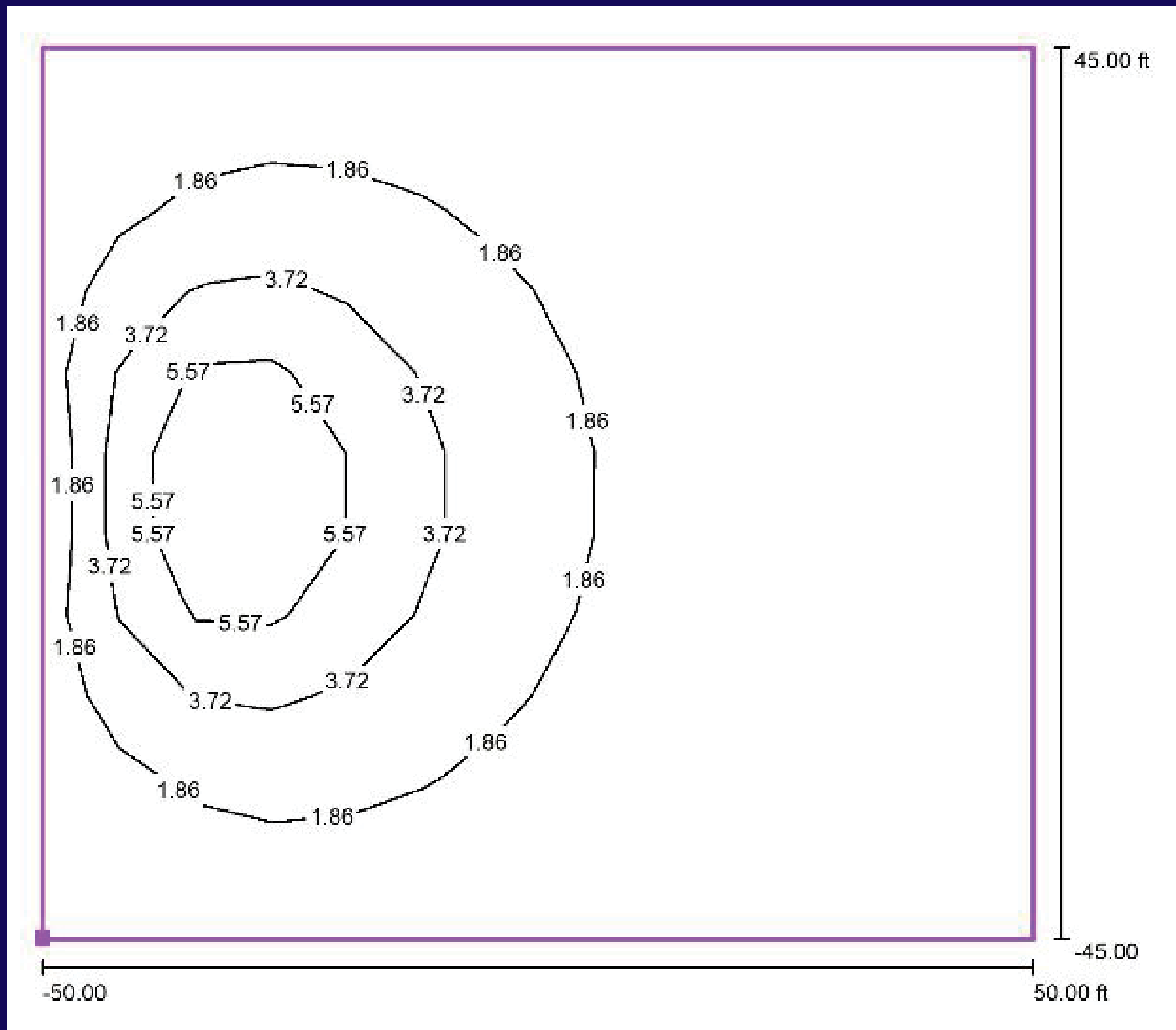
## FOOTPRINT

## SHYB



# SINGLE LIGHT TOWER ISOLINES

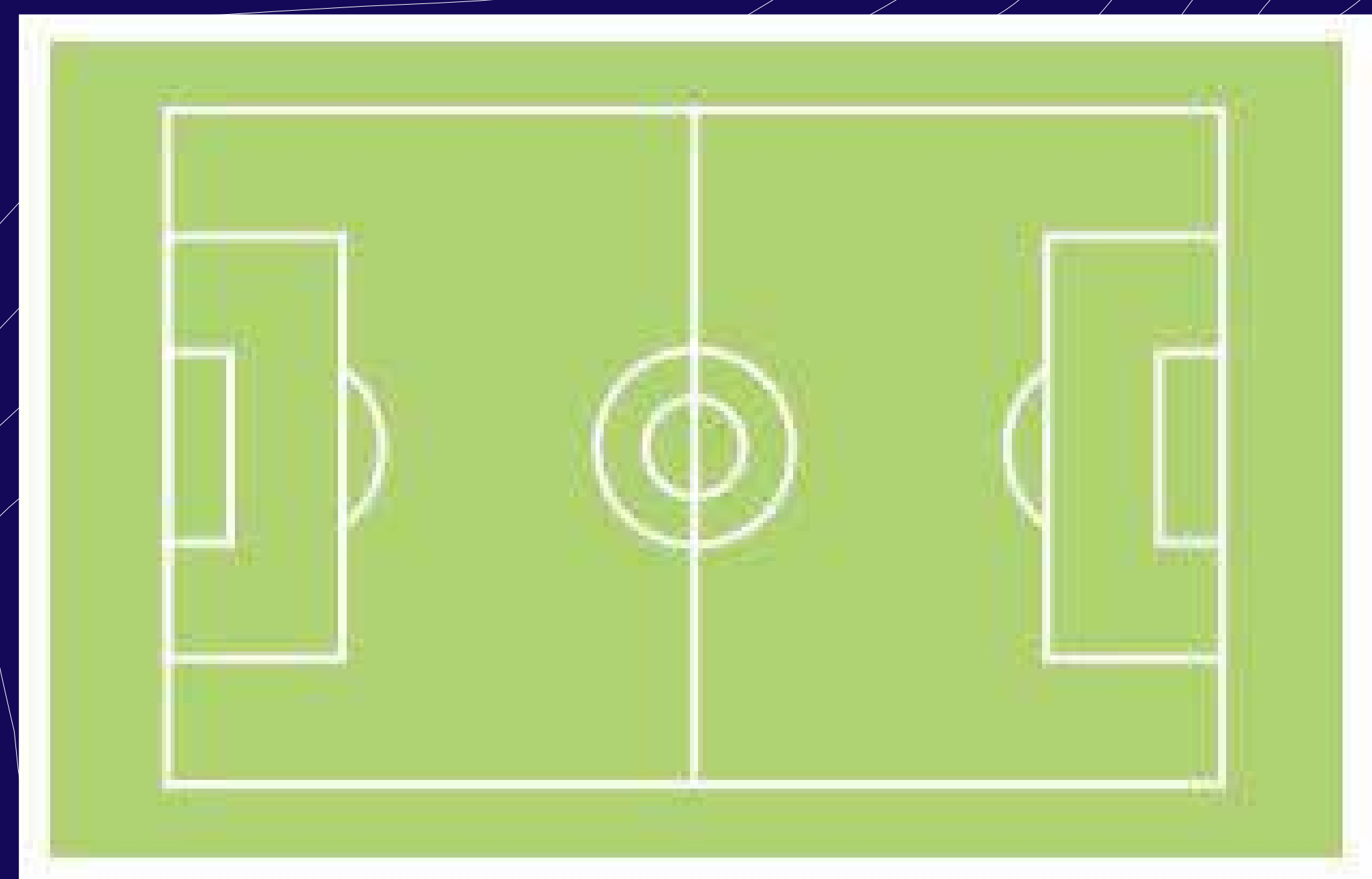
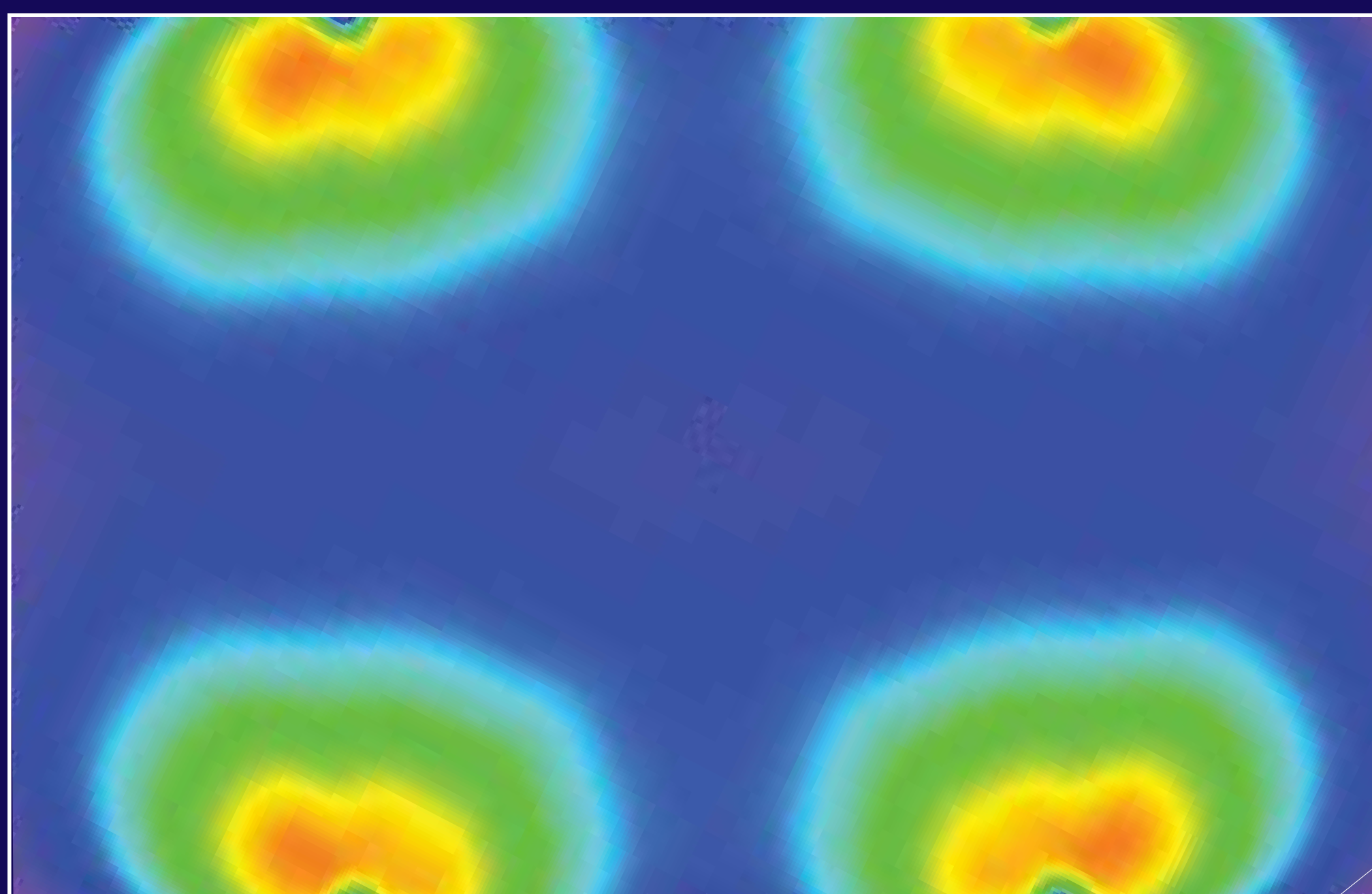
Lights	Four 65-watt LED flood lights
Efficiency	200 lumens/watt
Total	52,000 lumens per tower
Light height	23 ft.
Lighting area	100X90 ft.
Total acreage	0.2066
Luminosity	2.35 fc average across entire area



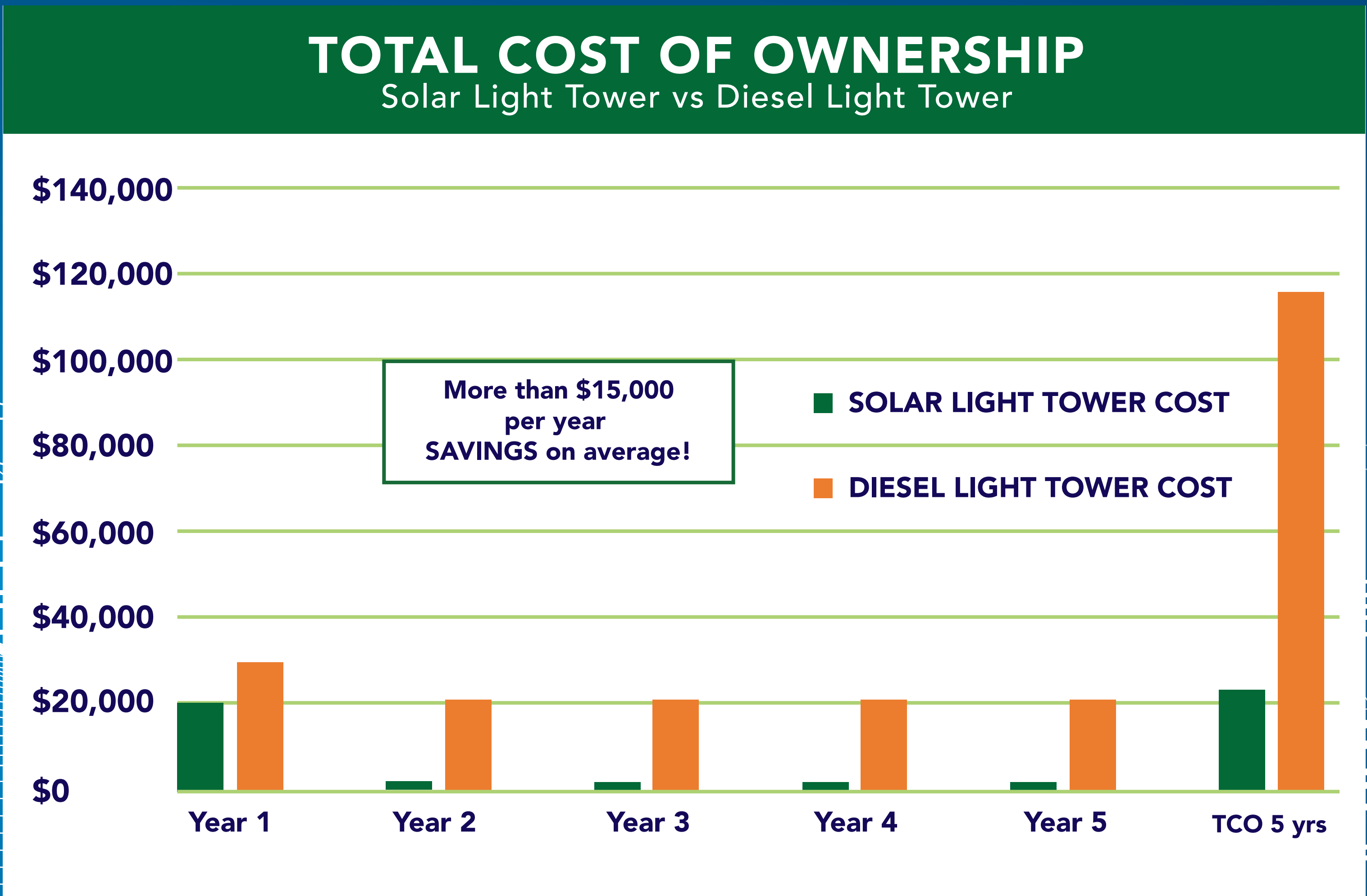
# FOUR LIGHT TOWERS

(REGULATION FOOTBALL FIELD)

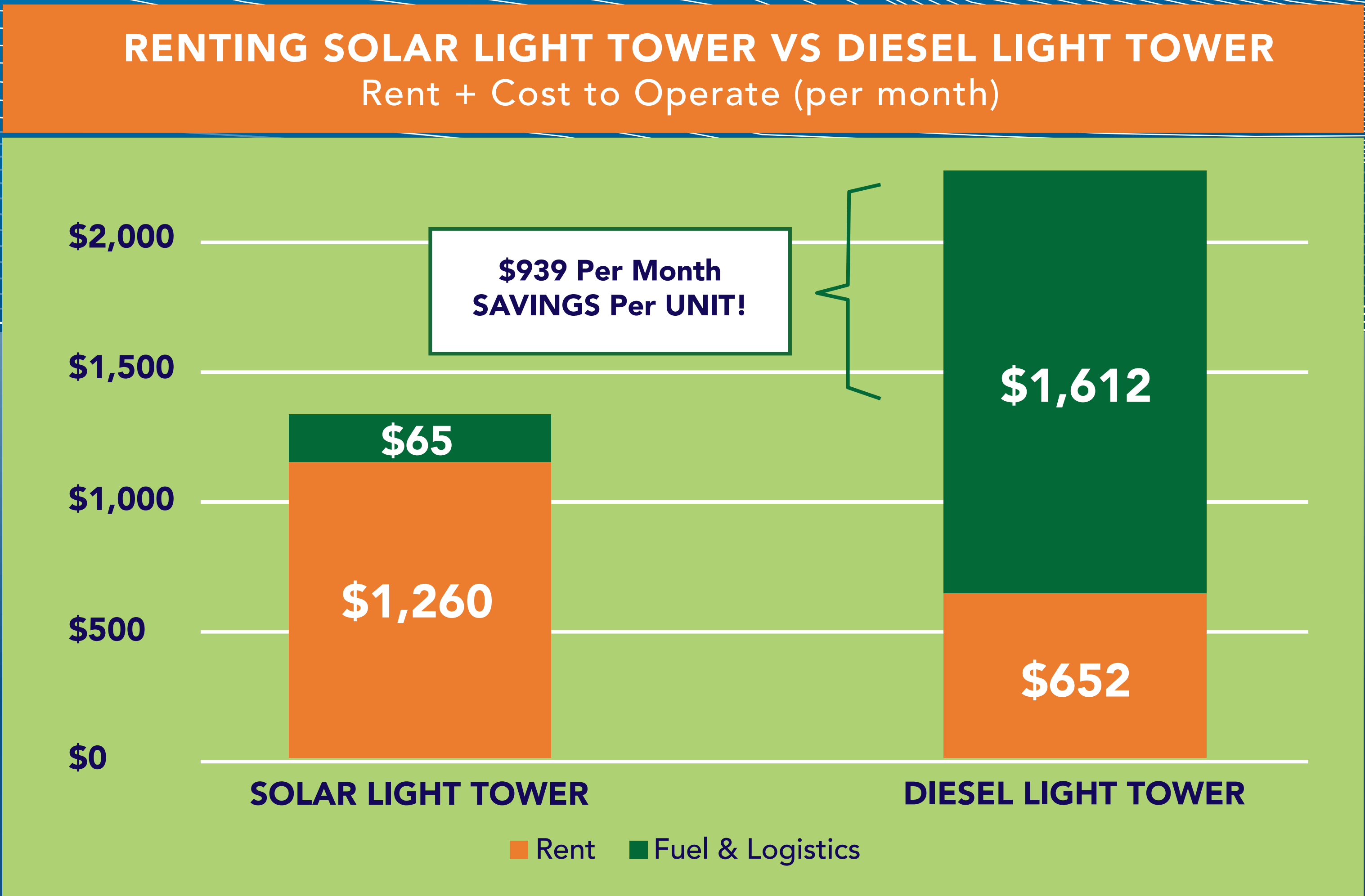
Lighting area	400 X 250 ft.
Total acreage	2.2960
Luminosity	0.9 fc average across entire area



**BUY**



**RENT**



**ENVIRONMENTAL**

### YEARLY REDUCTION OF CARBON EMISSIONS PER DIESEL LIGHT TOWER

Diesel Particulate Matter (DPM)	95.37	pounds
Nitrogen Oxides (NO2)	1,335.24	pounds
Carbon Monoxide (CO)	290.39	pounds
Sulfer Oxides (SO2)	20.21	pounds
Volatile Organic Compounds (VOC)	106.76	pounds
Total Carbon Dioxide (CO2) reduced by total diesel units removed from service	31.74	tons

w. ProgressSolarSolutions.com  
 e. Sales@ProgressSolarSolutions.com  
 p. 919.363.3738  
 1108 N New Hope Rd  
 Raleigh, NC 27610



Mailing Address:  
 PO Box 19540  
 Raleigh, NC 27619



**NO REFUELING • LESS MAINTENANCE • SET IT AND FORGET IT**