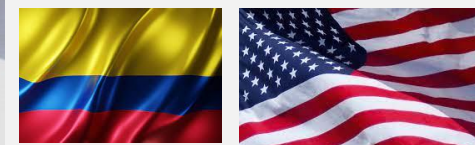




# An Equestrian Community

Teamwork, Training, Boarding, Lessons, Sales, & Goals Met

Ocala, Florida  
USA

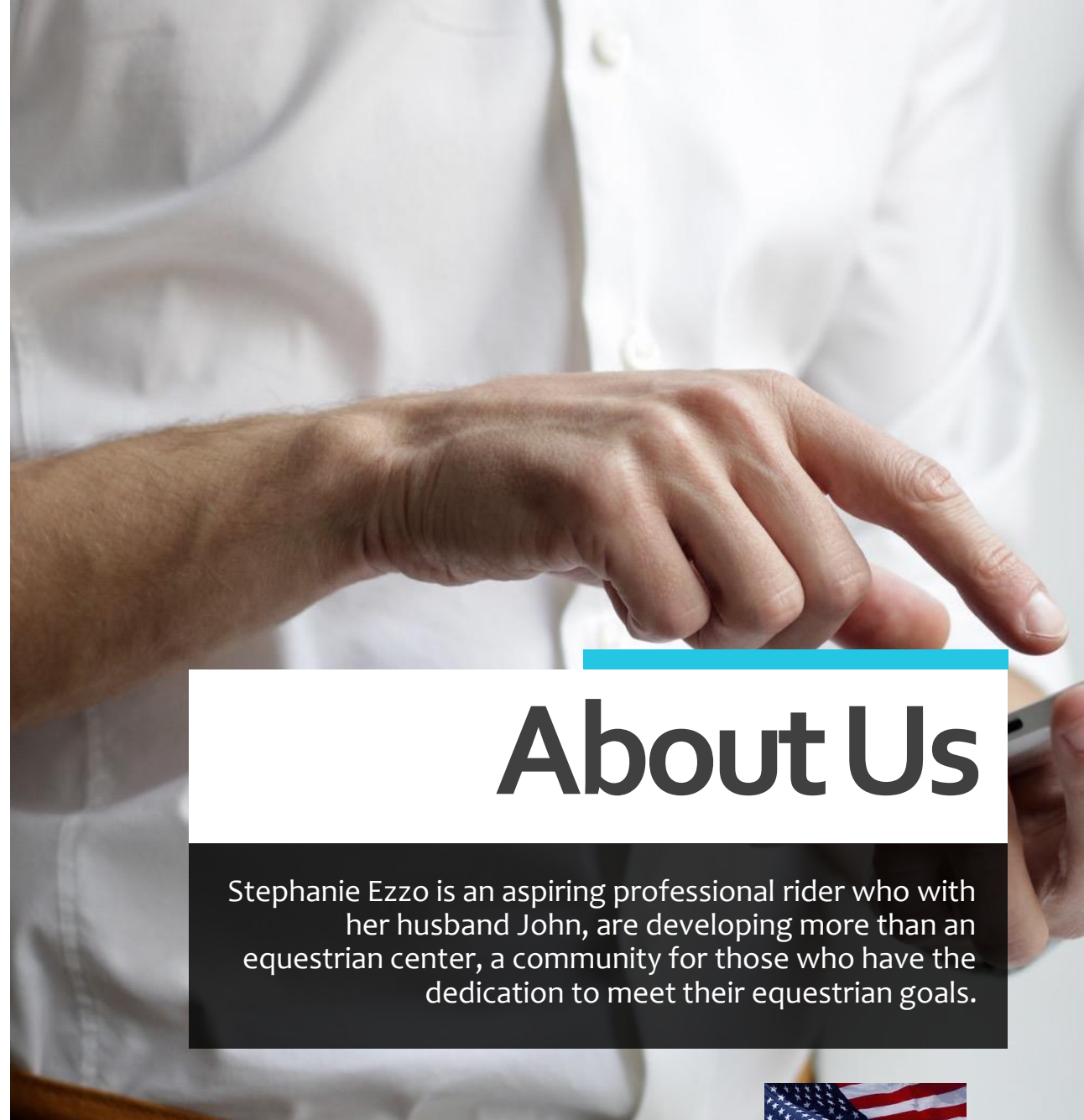




- Train
- Stay
- Lesson
- Board
- Sales



- All Block & Metal Roof Barn designed by renowned equestrian architect, John Blackburn:
  - Fully paved driveway
  - 14 Full-Service Stalls
  - Feed Room
  - Trunk Storage Room
  - Riders' Lounge
    - Full bathroom
    - Kitchen
    - Workstation & printer
  - 2 Bedroom apartment
    - Full kitchen & full-size Whirlpool appliances
- Covered round arena
- Grass practice field
- Arena by Wordley Martin coming 2024
- 10 Paddocks with shelters, trees & auto water feeders
- 5 RV Sites



# About Us

Stephanie Ezzo is an aspiring professional rider who with her husband John, are developing more than an equestrian center, a community for those who have the dedication to meet their equestrian goals.





# Our Promise

Professional Equestrian Management in Clean & Safe Facilities

- Equestrian activities managed by Grand Prix & World Cup riders & Trainers.
- Facilities managed by facilities management professionals.



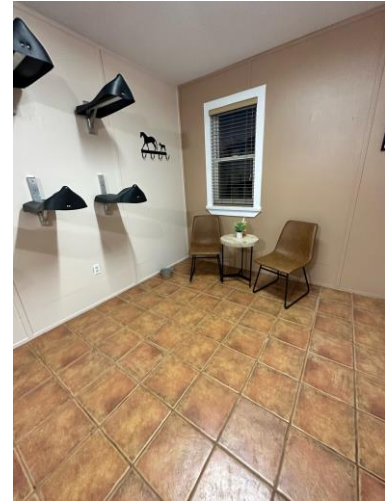


# More About the Facilities

Designed by renowned equestrian architect, John Blackburn, designer of the HITS Show Complex. Stephanie Ezzo Equestrian

A 21-acre beautifully landscaped farm. The fully paved driveway leads you to the parking areas and the grand concrete-block 14-stall show barn designed by renowned equestrian architect John Blackburn. The property is fully fenced with 4-board fencing. There are 10 pastures/paddocks, each with a lane around the farm and 5 turnout sheds. The 169x60 barn features: 30+ foot ventilated ceilings with skylights and a fan system; 14 (12x12) stalls with automatic waterers and one-piece matting system; aluminum doors; 187 sq ft feed room; 500 sq ft tool/storage room; indoor wash rack & tack area; guest air-conditioned half bath; a 600 sq ft 2-bedroom, 1-bath apartment with full kitchen and newer stainless-steel appliances; a 250 sq ft riders' lounge with kitchenette and full bath. Also, in the barn you will find a 300 sq ft air-conditioned tack/laundry room, with washer/dryer and an additional refrigerator, and a 144 sq ft air-conditioned office. Outside the barn there are several additional buildings, including a 60-ft diameter enclosed round pen with raised viewing area, a 50x70 covered steel building with concrete floor. In addition, fully irrigated lawn & landscaping, lightning protection system, large brick patio areas, stadium-quality lighting for night activities, a 40kw emergency generator, security system in the barn, Shoofly protection system, pest management by Ecolab. Centrally located between Ocala & Gainesville. Only 12 minutes to shopping and restaurants. A mile from Jumbolair, 8.5 miles to I-75, 18 miles to the World Equestrian Center, 20 miles to HITS, and 9 miles to downtown Ocala.

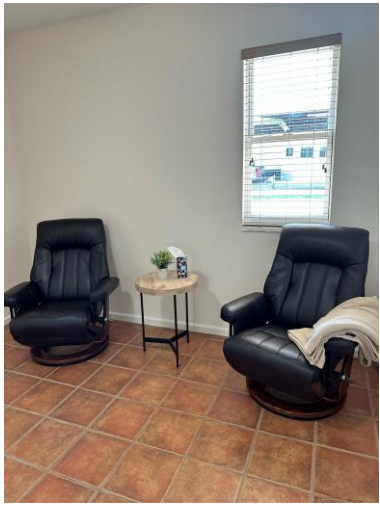




# The Stalls & Tack Room

All block stall walls, galvanized window frames, individual fan and light controls, all new LEED lighting, light rolling doors, opening for feed tray, hay racks, auto water feeders, Stall Savers floors.





# Riders' Lounge

Rest, relax, connect, meet, refresh, eat, change clothes, shower and if your horse needs your attention over night, use one of the lay flat recliners.





# Our Resources

Ocala is internationally renowned as the horse capital of the world. Now showing at World Equestrian Center & HITS Ocala.

- We have all the resources to support local training, showing, clinics, & visits for sales.
- From RV sites, hotels, to Airbnb options to luxury home rentals; we can arrange a successful stay.
- We have on site luxury sedan airport transportation to Ocala, Orlando, Tampa or Gainesville.





**Stephanie  
EZZO  
Equestrian**



# Thank You

John Ezzo



+1 586 405 8921



johnizzo@comcast.net



[www.stephanieezzoquestrian.us](http://www.stephanieezzoquestrian.us)

