



# SILICONE NEON STRIP

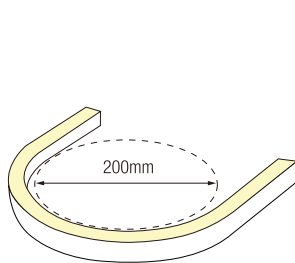
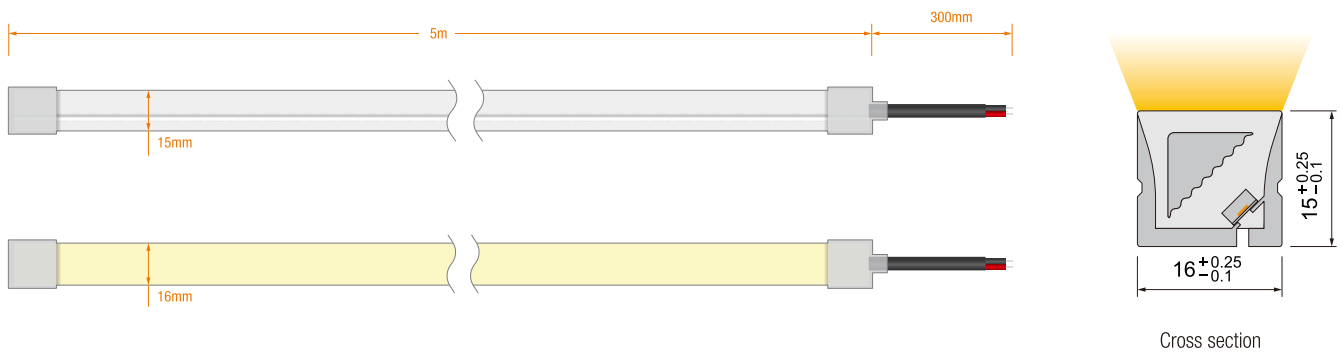
PRODUCT SPECIFICATION

Top bend & side bend

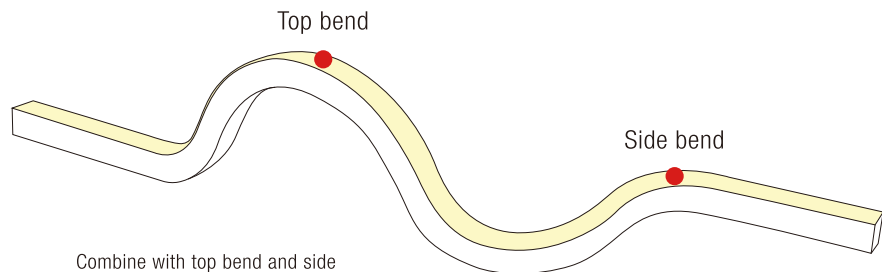


- It is made of Dow Chemical SILASTIC™ ET-7021 silicone rubber, which provides high transparency and high strength.
- Environmental protection grade silicone material, integrated extrusion molding process.
- Unique optical light distribution structure design, uniform lighting surface and no shadow.
- IP67 protection level, salt solution resistance, acids & alkalis and UV resistance
- Excellent toughness, simple and stylish appearance, delicate and unique.
- 3 years warranty, working life  $\geq$  30000 hours.

## Dimension structure



Min bending diameter



Combine with top bend and side bend, to meet the request of the different space bend.

## Electrical Parameter

Voltage	DC24V
LED PIN Temperature	Max. 65 °C
Storage Temperature	-25 °C ~ 60 °C
Ambient Temperature	Min. -25°C
CRI	>90

## Specification

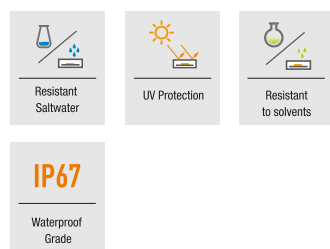
Power	5w/m	10w/m
Efficacy@4000K	77lm/w	73m/w
Max Ambient Temperature	55 °C	45 °C

Due to the tolerance of the production and electrical components, output value and electrical power can vary up to 10%

## Length Standard

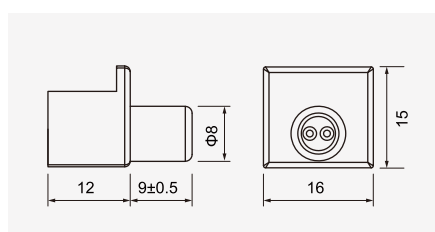
Length Range (M)	Final Length		Tolerance
	Integral end cap	Silicone end cap	
0M<Neon Strip≤5M	L+6	L+8	±7

## Single color (Lm/m)

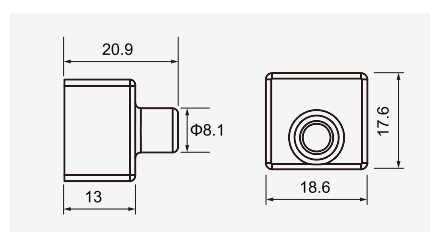


CCT(K)	CRI	Voltage	Power(W)	Lumen (LM/M)	Efficiency (LM/W)	Unit Length (mm)	Max. Run Length (M)	CC/CV
2100K±100	≥90	DC24V	10	600	60	50	5	CC/CV
2400K±100	≥90	DC24V	10	630	63	50	5	CC/CV
2700K±100	≥90	DC24V	10	670	67	50	5	CC/CV
3000K±100	≥90	DC24V	10	700	70	50	5	CC/CV
3500K <sup>+200</sup> <sub>-100</sub>	≥90	DC24V	10	730	73	50	5	CC/CV
4000K <sup>+300</sup> <sub>-200</sub>	≥90	DC24V	10	730	73	50	5	CC/CV
5000K <sup>+300</sup> <sub>-200</sub>	≥90	DC24V	10	750	75	50	5	CC/CV
6000K <sup>+400</sup> <sub>-100</sub>	≥90	DC24V	10	730	73	50	5	CC/CV
Red	--	DC24V	10	310	31	50	5	CC/CV
Green	--	DC24V	10	530	53	50	5	CC/CV
Blue	--	DC24V	10	140	14	50	5	CC/CV
Yellow	--	DC24V	10	260	26	50	5	CC/CV
Pink	--	DC24V	10	480	48	50	5	CC/CV

## Various End Caps



Integral end cap



Silicone end cap

## Integral end cap

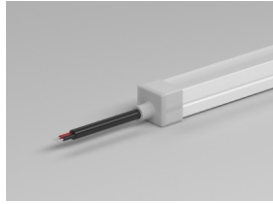


Front Cable Entry

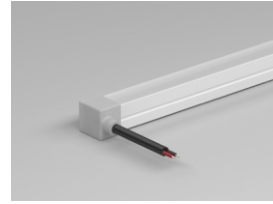


Closed end cap

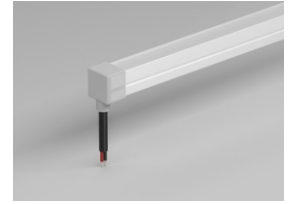
## Silicone end cap



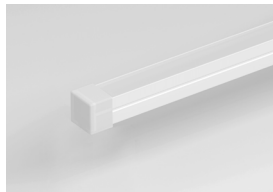
Front Cable Entry



Side Cable Entry



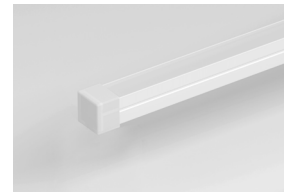
Bottom Cable Entry



Closed end cap



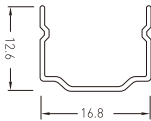
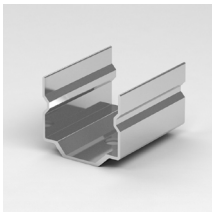
Closed end cap



Closed end cap

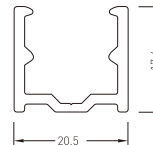
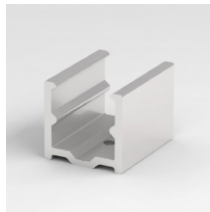
## Mounting Way

### Mounting Clips



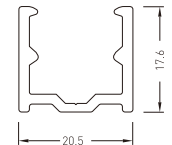
Dimension:  
20x12.6x16.8mm  
Accessories:  
Screw M3x15mm

### Aluminium Mounting clips



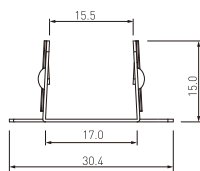
Dimension:  
20x20.5x17.6mm  
Accessories:  
Screw M3x15mm

### Aluminium Profile



Dimension:  
1000x20.5x17.6mm  
Accessories:  
Screw M3x15mm

### Curved aluminum profile





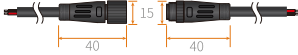



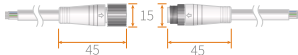

Dimension: 51.4x30.4x15mm  
Accessories:  
Screw M3x15mm

### Suspension Installation

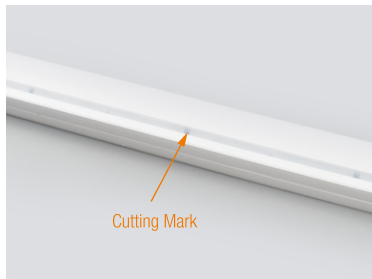


• Use with the profile

## Cable

Cable Type	Schematic Diagram	Specification	Core	Electrical Properties
PVC Cable		OD: 5.0mm / Inner core: 20AWG		Red V+, Black V-
Waterproof Connector with PVC Cable		OD: 5.0mm / Inner core: 20AWG M12Male / Female connecto		Red V+, Black V-
Silicone Cable		OD: 5.0mm / Inner core: 20AWG		Red V+, Black V-
Waterproof Connector with Silicone Cable		OD: 5.0mm / Inner core: 20AWG M12Male / Female connecto		Red V+, Black V-

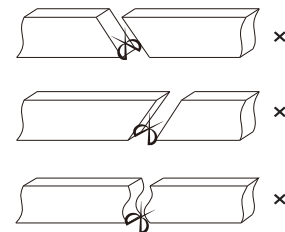
## Cutting Mark



Remark:  
The bottom of the led strip has transparent window, the black marker is the cutting position

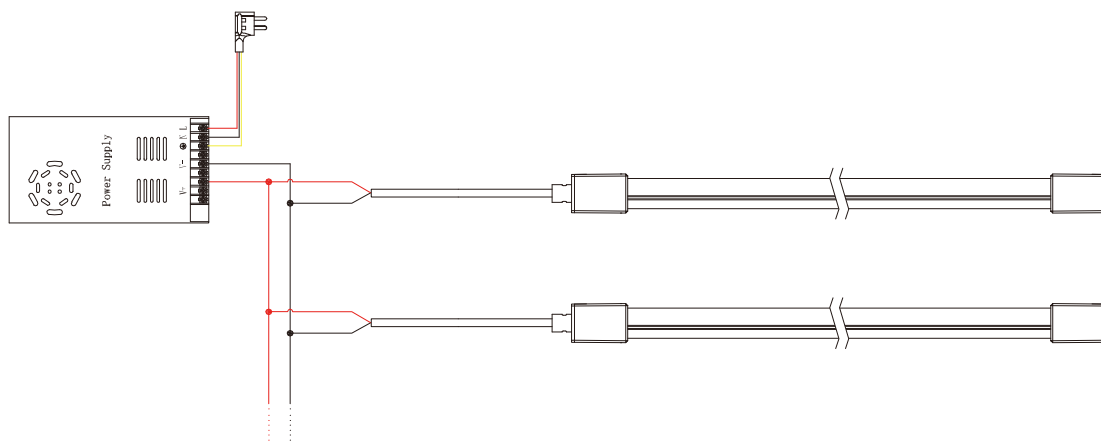


Use professional scissors to cut vertically at the cutting mark

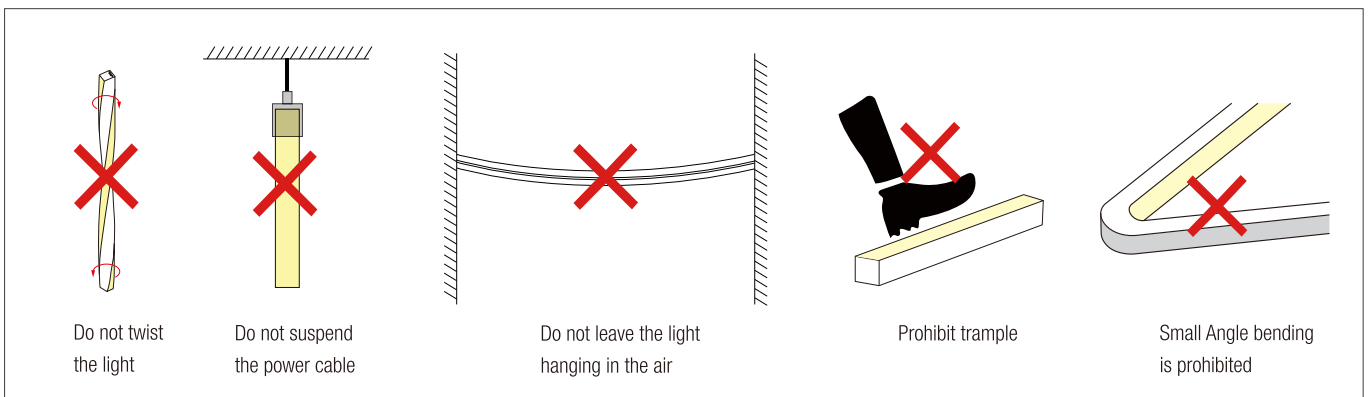
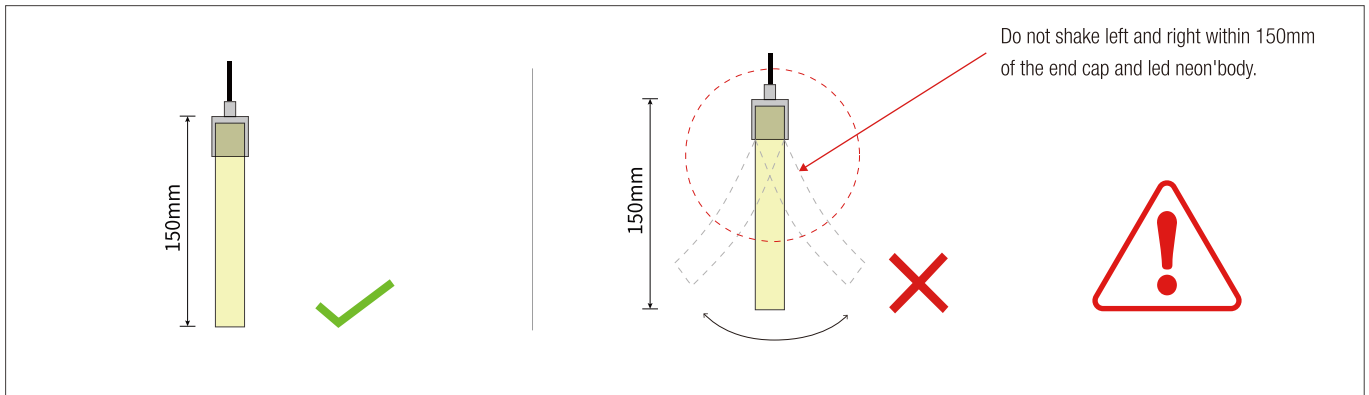


Please don't be feel free to cut and cut into an oblique angle or cambered section.

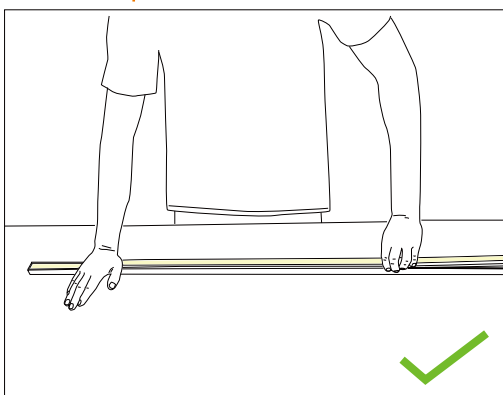
## Wiring diagram



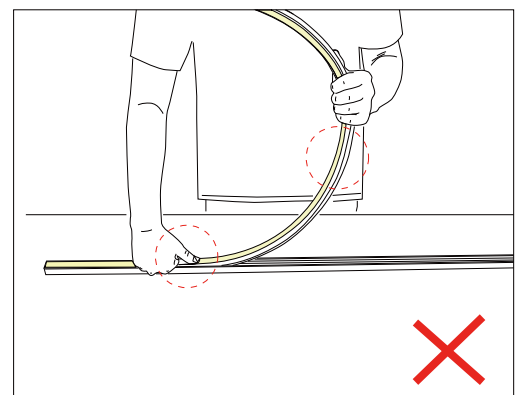
## Installation Precautions



## Put it in the profile



- Please press the led strip with your palm to slowly insert the led strip into the groove, and gently straighten the led strip above the groove with your right hand.
- Try to keep the led strip in a flat state during the installation process.



- Do not press the led strip with a single finger, it is easy to damage the internal parts of the led strip.
- The bent arc of the led strip should not be too large during installation.

## Notes

The selection of the cable specification at the output end of the power supply, it depends on the total current of the load and the length of the cable. It is recommended to select according to the following table:

Current of the light	Specifications of the cable								
	L=1M	L=2M	L=4M	L=6M	L=8M	L=10M	L=12M	L=14M	L=16M
1A	AWG26	AWG23	AWG21	AWG18	AWG18	AWG17	AWG16	AWG15	AWG15
2A	AWG23	AWG21	AWG18	AWG16	AWG15	AWG14	AWG13	AWG12	AWG12
3A	AWG22	AWG18	AWG16	AWG14	AWG13	AWG12	AWG11	AWG11	AWG10
4A	AWG21	AWG18	AWG15	AWG13	AWG12	AWG11	AWG10	AWG9	AWG9
5A	AWG20	AWG17	AWG14	AWG12	AWG11	AWG10	AWG9	AWG9	AWG8
6A	AWG18	AWG16	AWG13	AWG11	AWG10	AWG9	AWG8	AWG8	AWG7
7A	AWG18	AWG15	AWG12	AWG11	AWG9	AWG8	AWG8	AWG7	AWG6
8A	AWG17	AWG15	AWG12	AWG10	AWG9	AWG8	AWG7	AWG7	AWG6
9A	AWG17	AWG14	AWG11	AWG10	AWG8	AWG7	AWG7	AWG6	AWG5
10A	AWG16	AWG14	AWG11	AWG9	AWG8	AWG7	AWG6	AWG6	AWG5

- ※ The unused light should be sealed with the packaging bag to avoid prolonged exposure.
- ※ Please use DC24V isolated constant voltage power supply with ripple voltage less than 5%. Using other types of power supply may damage the light or cause other safety risks.
- ※ In practical application, 20% allowance should be reserved for power supply to ensure the stability of power supply.
- ※ It is recommended that professionals connect the power supply. Do not connect the power supply with live power to avoid electric shock.
- ※ Please confirm whether the voltage of the power supply is consistent with the voltage of the light; Pay attention to the positive and negative poles of the power cord, do not connect wrong, so as not to cause product damage;
- ※ When multiple power supplies are used, ensure that the positive poles of the power supply are not connected in parallel. Otherwise, the power supply system may be unstable or damaged after long-term operation.
- ※ If the actual application length exceeds the specified length, it will lead to overload, heating and uneven brightness of the light.
- ※ During installation, please do not scratch, twist, or bend the light irregularly. Otherwise, the light may be damaged beyond repair.
- ※ To ensure the life and reliability of the light, please do not over bend the light, which will damage the product itself.
- ※ To protect your eyes, please avoid staring at the glowing surface of the light for a long time.
- ※ Non-professionals are forbidden to install, disassemble and maintain the product.
- ※ Do not use any acid or alkaline adhesive to fix the light (including but not limited to glass glue, etc.)
- ※ IP67 products are not suitable for long-term immersion in water; IP68 products are only customized by the factory. After cutting and processing by users themselves, there is a risk that IP68 protection level cannot be reached
- ※ Because of the difference in structure, even if the same color temperature value, different sizes of light will look slightly different colors. Please confirm it before use.

Tests showed that methanol and benzenes will have yellowing effects on silicone.

In the newly decorated interior environment, epoxy floor paint, wall paint, wallpaper adhesive, various decoration materials or new furniture, they are likely to release of methanol and benzenes.

It is recommended to remove methanol and benzenes first, or ventilate for a period of time in the newly decorated interior environment before install the silicone neon light, to avoid affecting the silicone body.



**Consilio Lighting**

**+44 (0)1926 312 712**