

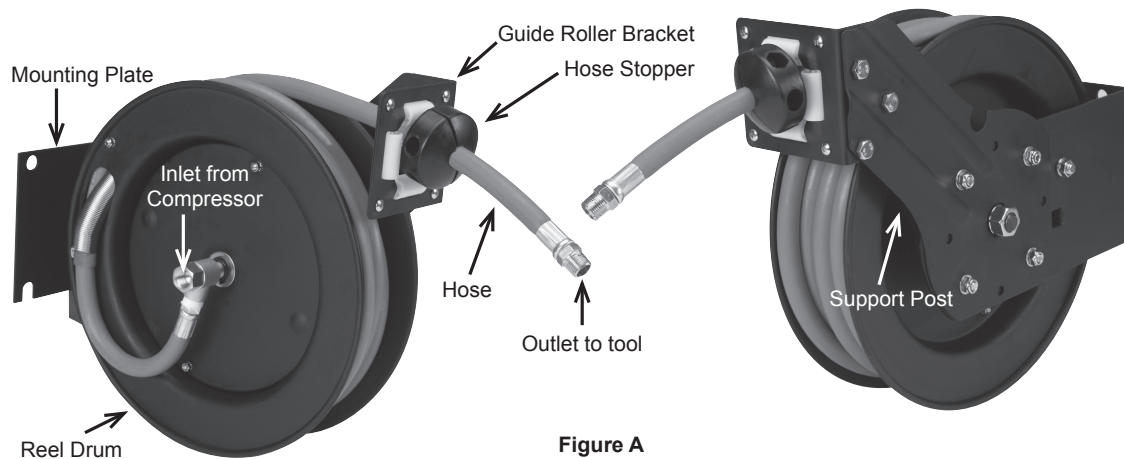
3/8" X 50 FT AUTO REWIND AIR HOSE REEL

Owner's Manual & Safety Instructions

Specifications :

Hose Length.....50'
Maximum Air Pressure..... 250 PSI
Air Inlet.....1/4" -18 NPT

Components and Controls :



Installation:

1. A flexible hose connection must be used between the hose reel inlet and the source of supply to prevent possible misalignment and binding.
2. Install the reels at least 10 feet above the floor.
3. If the reel you have bought is with unassembled hose, you must purchase proper hose and attach hose to reel.
4. The hose reel is equipped with wide slots for easy installation so that it can be mounted on the floor/ wall/ ceiling, whichever place is convenient.
5. Apply Teflon tape or thread sealant to Inlet Hose threads and attach one end to Reel Inlet.
6. Apply Teflon tape or thread sealant to Outlet Hose Fitting. Attach outlet to air tools.
7. Must use a FLEXIBLE inlet hose, and a swivel type connector is required on air compressor.

Replacement of Hose:

1. Wind spool flange clockwise-facing swivel-until spring is tight.
 2. Pull out all the Hose and lock the Reel in that position.
- Caution: Make sure reel is securely locked and will not rotate back.**
3. Insert hose through roller guide and hole in spool flange.
 4. Connect hose fitting to swivel joint and secure hose with clamps.
 5. Carefully disconnect Hose from Swivel Joint on side of Reel and remove old Hose.
 6. The Male fitting should now be on the outside of the Drum. Apply Teflon tape or thread sealant and connect Hose Fitting to the Swivel Joint. Secure Hose rigid with hose Clamp.

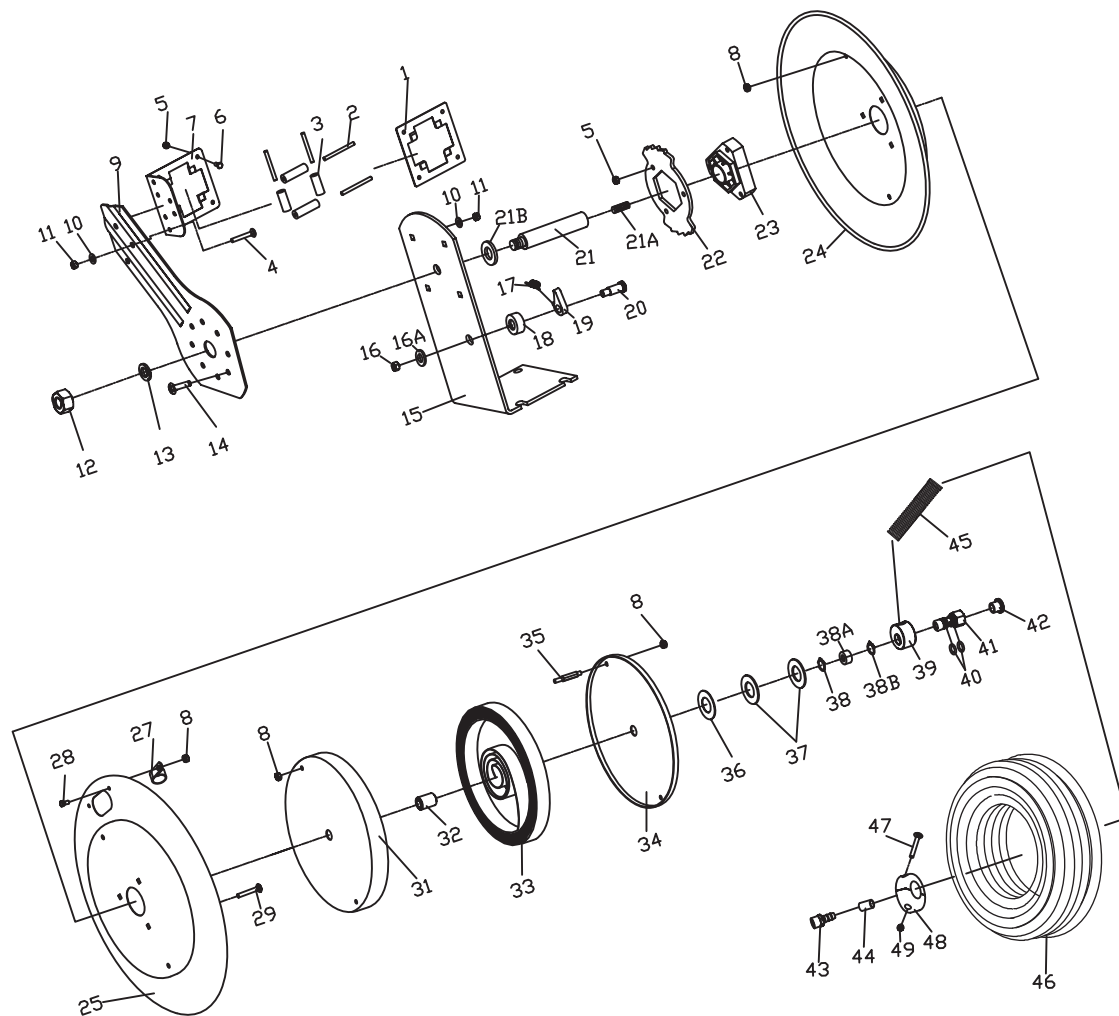
Adjustments:

1. To adjust spring tension, add or remove wraps of hose from the spool, one wrap at a time until desired tension is obtained.
2. Pull out 6.5' (or 2m) of Hose and latch the drum.
3. Add one wrap of hose to the Drum to increase tension or take away one wrap to decrease tension.
4. Connect Inlet Hose.

Safety Precautions :

1. Make sure incoming pressure does not exceed 250 PSI.
2. Use proper eye protection when assembling and using the hose reel.
3. Use soapy water to check for air leaks.
4. Do not expose fingers or hands directly to a pressurized air hose, or it will result in severe body injury.
5. Keep children away from the work area.

Parts Diagram and List :



Part	Description	Qty
1	Roller Plate	1
2	Roller Axis	4
3	Hose Roller	4
4	Screw	3
5	Screw Nut	7
6	Hex Screw	4
7	Roller Base	1
8	Screw Nut	8
9	Guide Arm	1
10	Washer	7
11	Screw	7
12	Nut	1
13	Spring Washer	1
14	Screw	4
15	Base	1
16	Nut	1
17	Spring	1

Part	Description	Qty
18	Bushing	1
19	Clamp	1
20	Screw	1
21	Inlet Axle	1
21A	Bolt	1
21B	Washer	1
22	Clamp Base	1
23	Plastic Cover	1
24	Left Drum	1
25	Right Drum	1
27	Hose Clamp	2
28	Screw	2
29	Screw	3
31	Protective Case	1
32	Bushing	1
33	Drive Spring	1
34	Protective Case	1

Part	Description	Qty
35	Screw	2
36	Washer	1
37	Washer	2
38	Retainer Ring	1
38A	Brass Bushing	1
38B	Retainer Ring	1
39	Brass Connector	1
40	O Ring	1
41	Air Inlet	1
42	Plastic Plug	1
43	Air Outlet	2
44	Retainer	2
45	Spring Guard	1
46	50' Rubber Air Hose	1
47	Screw	2
48	Ball Stopper	2
49	Screw Nut	2