

Figure 1

SPECIFICATION

Square Drive: 1/2", 3/8"

Free Speed: 150 RPM

Recommended Hose Bore Size: 3/8"

Recommended Max. Hose Length: 30 FT

Air Pressure: 90 PSI

AIR SUPPLY

An air compressor of at least one horsepower with 4 CFM delivery at 90 psi (6.2 bar) with an air tank with a minimum of 12 gallons capacity is required.

Couplings, as shown in the illustration above, may be used. Do not connect couplers directly to the air inlet. They increase the overall bulk of the tool, put an unnecessary strain on the tool inlet threads, and deteriorate rapidly due to vibration.

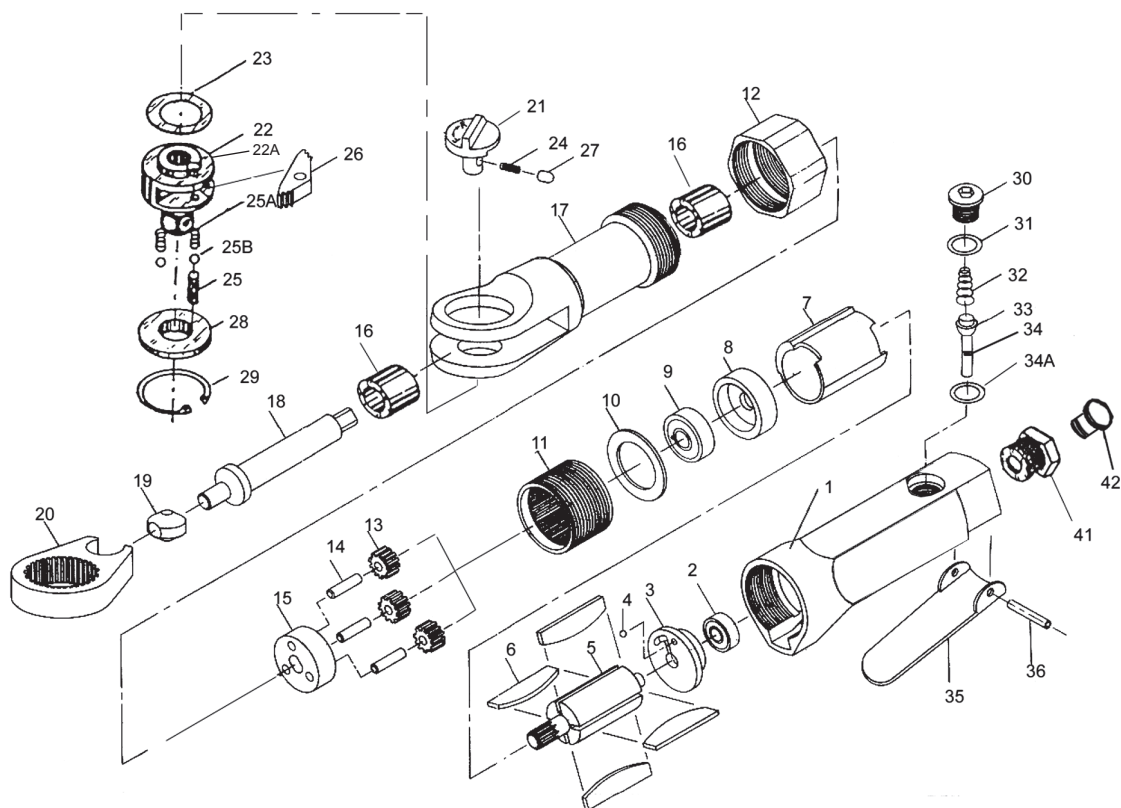
Water in the air line will cause damage to the tool. Drain the air tank daily. Clean the air inlet screen on at least a weekly schedule. The recommended hook-up procedure can be viewed in Figure 1.

Please put lubricated oil on the machine at a certain period for long life.

SAFETY RULES

1. Always wear approved eye protection. Be sure to use a dust mask when operation creates dust.
2. Disconnect tool before performing service, changing accessories and when not in use.
3. Always use tool a safe distance from other people in work area.
4. Secure work with clamps or vise so both hands are free to operate tool. Keep proper footing and balance at all times.
5. Do not wear loose or ill-fitting clothing, remove watches and rings.
6. Keep tool away from body when it is running.
7. Never use quick change couplings attached at tool. They add weight and could fail due to vibration. Instead, add a hose whip and connect coupling between air supply and hose whip.
8. Keep clean on the surface of body. Please hold the machine tightly while work.

PARTS DIAGRAM AND LIST



NO.	MODEL NO.	DESCRIPTION	Q'TY
1	320-24-01	Housing	1
2	320-24-02	Rear Bearing	1
3	320-24-03	Rear Plate	1
4	320-24-04	Roll Pin	1
5	320-24-05	Rotor	1
6	320-24-06	Rotor Blade	4
7	320-24-07	Cylinder	1
8	320-24-08	Front Plate	1
9	320-24-09	Front Bearing	1
10	320-24-10	Washer	1
11	320-24-11	Thread Ring Gear	1
12	320-24-12	Clamp Nut	1
13	320-24-13	Idler Gear	3
14	320-24-14	Idler Gear Pin	3
15	320-24-15	Idler Gear Plate	1
16	320-24-16	Spacer	2
17	320-24-17	Ratchet Housing	1
18	320-24-18	Crank Shaft	1
19	320-24-19	Drive Bushing	1
20	320-24-20	Ratchet Yoke	1
21	320-24-21	Reverse Button	1

NO.	MODEL NO.	DESCRIPTION	Q'TY
22	320-24-22	3/8" Ratchet Anvil	1
22A	320-24-22A	1/2" Ratchet Anvil	1
23	320-24-23	Washer	1
24	320-24-24	Spring	1
25	320-24-25	Lock Pin	1
25A	320-24-25A	Spring	2
25B	320-24-25B	Steel Ball	2
26	320-24-26	Ratchet Pawl	1
27	320-24-27	Pin	1
28	320-24-28	Thrust Washer	1
29	320-24-29	Retainer Ring	1
30	320-24-30	Valve Plug	1
31	320-24-31	O-Ring	1
32	320-24-32	Spring	1
33	320-24-33	O-Ring	1
34	320-24-34	Roll Pin	1
34A	320-24-34A	O-Ring	1
35	320-24-35	Trigger	1
36	320-24-36	Trigger Pin	1
41	320-24-41	Connection Head	1
42	320-24-42	Plastic Plug	1