



*To Be More Powerful
To Be More Valuable*

Green Air Link Corporation

2570 Corporate Place Ste E101, Monterey Park,
CA 91754 USA

Tel.: +1-323-406-2968

Email: support@dynamicpowertools.com

www.dynamicpowertools.com



Printed in 2021



**DYNAMIC[®]
POWER**

PNEUMATIC TOOLS



Catalog

www.dynamicpowertools.com

American Company



Company Profile

Dynamic Power has been committed to supplying world-wide customers with high quality Pneumatic Tools include air impact wrenches, air ratchet wrenches, air drills, die grinders, paint spray guns, connectors, tire gauges, air grease guns, air unit controls, air hoses & hose reels, and a full range of associated air accessories, etc. All products are tested in real-world situations to ensure them "To be More Powerful and To be More Valuable" than your expectations.

Looking back on more than 40 years of technical experience and supported by one of the largest professional manufacturers of pneumatic tools and associated products, Dynamic Power also provide business with professional industrial pneumatic solutions.

Through integrating research & development, manufacturing, sales and services, adhering to the business philosophy of Customer First and Forging Ahead with Determination, Dynamic Power enjoys an exceptional reputation for integrity and trustworthiness, scientific innovation, excellent services, consistent quality control and management standardization.

Factory Locations Worldwide



China



China



Vietnam

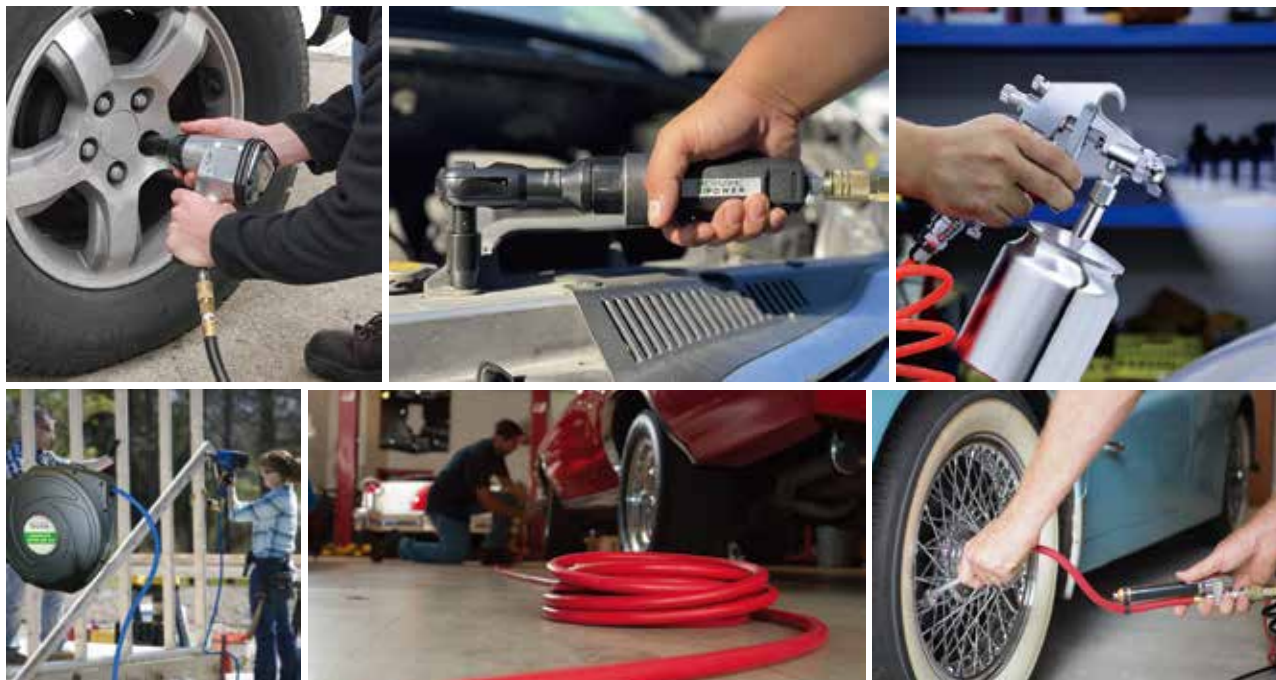


Taiwan



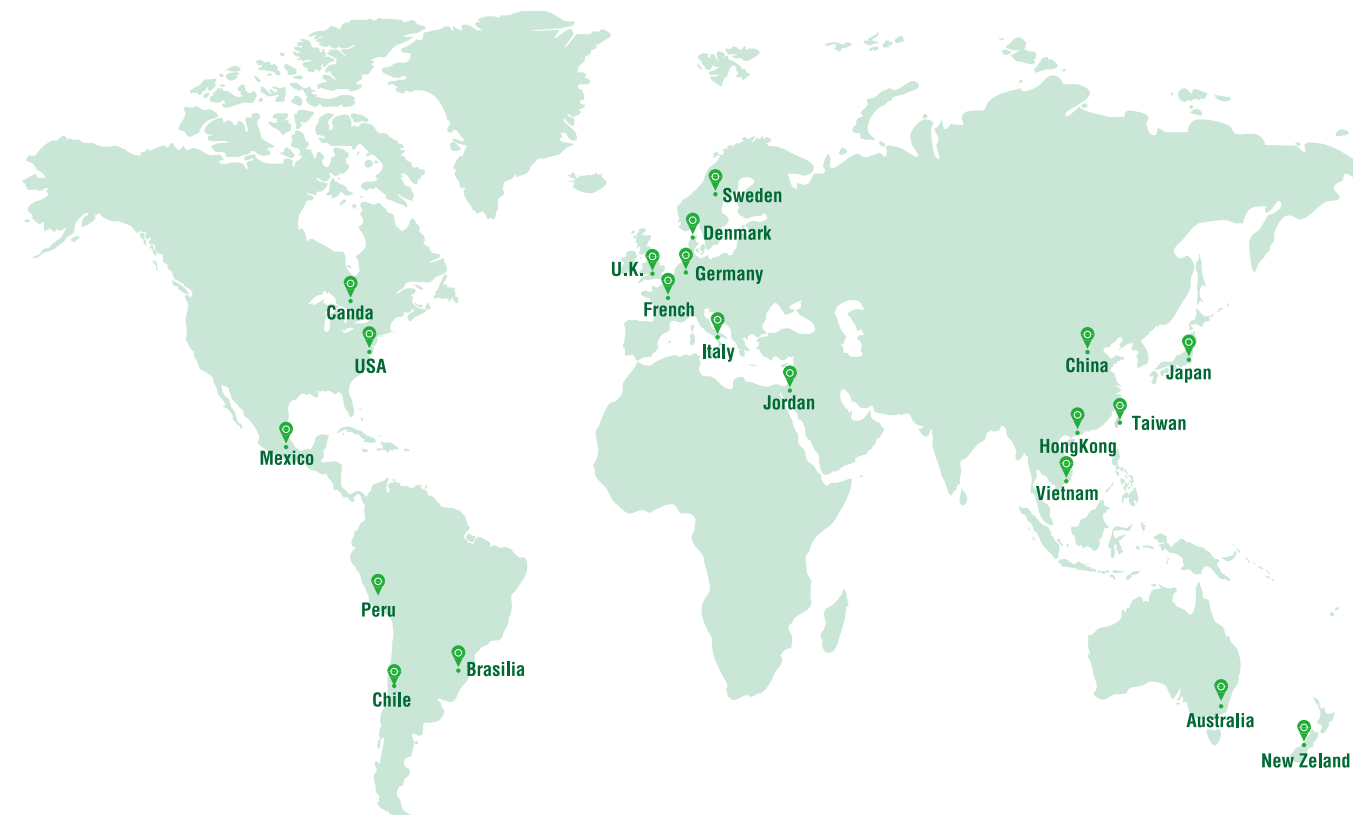
Products Overview

We are dedicated to designing, developing, engineering, and manufacturing the highest quality of Pneumatic Tools and Accessories possible. This includes Impact Wrenches, Spray Guns, Hoses, Hose Reels, Couplers and Couplings, and other air accessories covering hundreds of products. Through our catalogue offerings, we offer an entire range of Pneumatic Tools and Accessories catering to a wide range of customers from retail markets to Professional body & auto repair shops, factory applications, etc.



www.dynamicpowertools.com

Sales Area

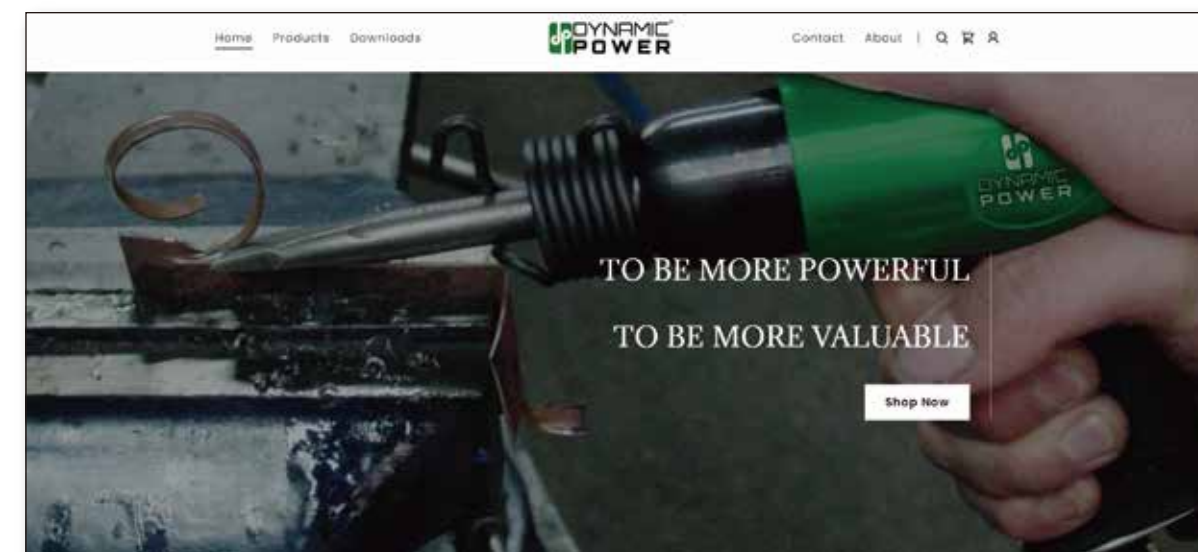


Dynamic Power products are sold worldwide in over 100+ countries and regions, receiving critical acclaim from our repeat customers year after year. We pride ourselves in delivering high quality products and designs with exceptional customer service. Our major markets are North America and Europe, with continued expansion into South America, Middle East and Australia.

Find us on Amazon!



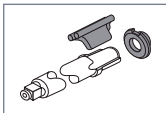
www.dynamicpowertools.com





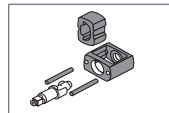
An impact wrench delivers a series of rotary blows to a fastener, producing torque. The advantage of impact wrenches is the high power-to-weight ratio, fast rundown, and limited torque reaction to the operator.

Diagram and brief introduction of different impact mechanisms



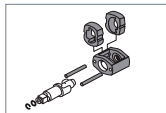
Rocking Dog:

Simple design hammer mechanism provides great hitting power and easy to maintain



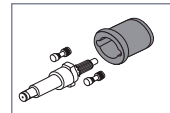
Jumbo Hammer:

Single hammer delivers instantaneous balanced blow and hitting, very easy to maintain



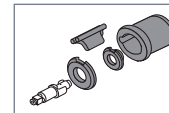
Twin Hammer:

Two identical hammers provide instantaneous balanced blow/hitting and high torque
Durable hammer mechanism and excellent for heavy-duty industrial applications



Pin-clutch:

Smooth balance impact for operation
Provides with high torque and durability
Low vibration and noise level



Pinless Hammer:

Close hammer cage mechanism prevents breakage from hammer pin damage
Special extension design of hammer cam provides smooth and balanced impact, low vibration level and extremely high torque level
Undivided hammer pin and hammer dog mechanism prevent damage of hammer pin. Prolongs the tool using life



DP31226

1/2" Impact Wrench

- Rocking dog impact mechanism
- At 240 ft-lbs. of torque, provides power to remove most lug nuts
- Built-in power regulator to control speed and torque
- Single handed operation for forward and reverse direction changes
- Four position power settings
- Compact and ergonomic with rubber grip



Impact Wrench Kit

- Ideal for general automotive service, tire and body shops, farm, light truck work, and industrial maintenance
- Kits include:
1-1/2" Impact Wrench;
10- Imperial Sockets 9, 10, 11, 13, 14, 17, 19, 22, 24, 27mm;
1- 5" Extension Bar; 1- Air Tool Oil; 1- Hex Wrench;
1- Male Plug; 1- Mini Oiler; 1- Blow Molded Case

Specifications:

Model	Drive Size in	Free Speed rpm	Max. Torque ft.lbs	Average Air Cons. cfm	Air Pressure psi	Net Weight kg	Air Inlet in	Min. Hose size in	Packing (QTY/N.W/G.W/VOL.) pcs/kg/kg/cuft
DP31226	1/2	7000	250	5.1	90	2.18	1/4	3/8	10/25.0/26.0/1.38
DP4430	1/2	7500	300	4.0	90	2.17	1/4	3/8	10/25.0/26.0/1.38



DP746

1/2" Impact Wrench with 2" Extended Anvil

- Extended anvil for the hard-to-reach area



DP62627

1/2" Impact Wrench

- Twin hammer impact mechanism
- Die casting Aluminum housing and steel hammer case for the toughest applications
- Maximum torque of 700 ft-lbs for heavy duty industrial using
- Combined power management and directional change for easy operation
- Silencing handle exhaust -very low noise level(Only 92dBA)



DP982

1/2" Impact Wrench

- Rocking Dog impact mechanism
- Maximum torque: 300ft-lbs
- Combined reverse/power management allows the user to easily control the speed and power output
- Countered ergonomic handle with soft handle grip reduces the operator fatigue



DP-F56

1/2" Impact Wrench

- Twin hammer impact mechanism
- Reinforced steel hammer case for longer using life
- Five power settings in both forward and reverse directions, easy to operate
- Maximum torque: 585ft-lbs



DP981

3/8" Impact Wrench

- Maximum torque:145ft-lbs



DP117

3/8" Mini Impact Wrench

- Jumbo hammer impact mechanism
- Maximum torque: 350ft-lbs
- Very compact design-easy access to the restricted area



DP983

1/2" Impact Wrench

- Pin-clutch impact mechanism
- Maximum torque: 400ft-lbs
- Combined reverse/power management allows the user to easily control the speed and power output
- Countered ergonomic handle with soft handle grip reduces the operator fatigue
- Patented ceramic silencing balls design reduces the noise level



Specifications:

Model	Drive Size in	Free Speed rpm	Max. Torque ft.lbs	Average Air Cons. cfm	Air Pressure psi	Net Weight kg	Air Inlet in	Min. Hose size in	Packing (QTY/N.W/G.W/VOL.) pcs/kg/kg/cuft
DP62627	1/2	8000	700	6.0	90	2.73	1/4	3/8	10/28.5/29.5/1.38
DP746	1/2	8000	700	6.0	90	2.80	1/4	3/8	10/29.0/30.0/1.68
DP982	1/2	7500	340	4.1	90	2.14	1/4	3/8	10/24.0/25.0/1.38
DP-F56	1/2	8500	585	6.0	90	2.60	1/4	3/8	10/27.0/28.0/1.38
DP117	1/2	8500	350	4.1	90	1.00	1/4	3/8	10/12.0/13.0/1.05
DP983/DP981	1/2, 3/8	7500	400/145	4.0	90	2.32	1/4	3/8	10/26.0/27.0/1.38



Low-Weight Composite Housing Impact Wrenches

- Modern design with low weight composite housing for less fatigue during overlong period using;
- Very powerful and reliable products quality

DP682 1/2" Impact Wrench

- Rocking dog impact mechanism and low weight composite housing
- 250ft-lbs of maximum torque for most tire repair and assembly job applications
- Countered ergonomic handle with soft handle grip reduces the operator fatigue
- Combined reverse/power management allows the user to easily control the speed and power output
- Patented ceramic silencing balls design reduces the noise level



DP4420 3/8" Impact Wrench

- Pin clutch impact mechanism
- Maximum torque: 250ft-lbs



DP4450 1/2" Impact Wrench

- Pin clutch impact mechanism and low weight composite housing
- Maximum torque: 400ft-lbs
- Combined reverse/power management allows the user to easily control the speed and power output
- Patented ceramic silencing balls design reduces the noise level



DP984 1/2" Heavy Duty Impact Wrench

- Twin hammer impact mechanism and low weight composite housing
- Maximum torque: 580ft-lbs
- Combined reverse/power management allows the user to easily control the speed and power output
- Patented ceramic silencing balls design reduces the noise level



DP985 3/4" Heavy Duty Impact Wrench

- Twin hammer impact mechanism
- Maximum torque: 1,000ft-lbs



Specifications:

Model	Drive Size	Free Speed	Max. Torque	Average Air Cons.	Air Pressure	Net Weight	Air Inlet	Min. Hose size	Packing (QTY/N.W/G.W/VOL.)
	in	rpm	ft.lbs	cfm	psi	kg	in	in	pcs/kg/kg/cuft
DP682	1/2	7400	400	5.2	90	1.91	1/4	3/8	10/22.0/23.0/1.25
DP4420	3/8	7000	150	4.0	90	1.15	1/4	3/8	10/14.0/15.0/0.85
DP4450	1/2	6700	500	4.0	90	2.16	1/4	3/8	10/25.0/26.0/1.38
DP984	1/2	7000	580	4.7	90	2.05	1/4	3/8	10/23.0/24.0/1.38
DP985	3/4	4500	1000	5.2	90	3.63	1/4	3/8	6/26.0/27.0/1.55

DP312949 1/2" Impact Wrench

- Twin hammer impact mechanism and low weight composite housing
- 800ft-lbs of maximum torque for very heavy duty job applications
- Combined reverse/power management allows the user to easily control the speed and power output



DP385E 1/2" Impact Wrench with 2" Extended Anvil



DP455 1/2" Impact Wrench

- Twin hammer impact mechanism and low weight composite housing
- 650ft-lbs of maximum torque for very heavy duty job applications
- Combined reverse/power management allows the user to easily control the speed and power output



DP63061 3/8" Impact Wrench

- Twin hammer impact mechanism and low weight composite housing
- Maximum torque: 350ft-lbs
- Combined reverse/power management allows the user to easily control the speed and power output
- Very compact and low weight design



DP62235 1/2" Impact Wrench

- Twin hammer impact mechanism and low weight composite housing
- 500ft-lbs of maximum torque -suitable for most of job applications
- Very unique push button style of forward/reverse change for easy operation



DP891 1/2" Impact Wrench

- Twin hammer impact mechanism and low weight composite housing
- 800ft-lbs of maximum torque for very heavy duty job applications
- One handed push-button forward/reverse with 3 speed rear dial regulator for easiest operations
- Ultra-silent through-handle exhaust keeps debris away from the operator
- Patented air cylinder combined with reverse valve prolongs the using life significantly



Specifications:

Model	Drive Size	Free Speed	Max. Torque	Average Air Cons.	Air Pressure	Net Weight	Air Inlet	Min. Hose size	Packing (QTY/N.W/G.W/VOL.)
	in	rpm	ft.lbs	cfm	psi	kg	in	in	pcs/kg/kg/cuft
DP312949	1/2	7400	800	6.0	90	2.27	1/4	3/8	10/28.0/29.0/1.38
DP385E	1/2	7400	800	6.0	90	2.35	1/4	3/8	10/29.0/30.0/1.45
DP455	1/2	7500	650	5.0	90	2.18	1/4	3/8	10/26.8/27.8/1.38
DP63061	3/8	9000	350	6.0	90	1.32	1/4	3/8	10/16.0/17.0/0.85
DP62235	1/2	8000	420	6.0	90	2.10	1/4	3/8	10/25.0/26.0/1.35
DP891	1/2	8000	800	6.0	90	2.10	1/4	3/8	10/25.0/26.0/1.35

DP980 3/8" Butterfly Impact Wrench

- Rocking dog impact mechanism
- Maximum torque : 95ft-lbs
- Butterfly paddle throttle lever allows for quick directional change
- New sleek housing design features air inlet with screen increases maneuverability and reduces air hose tangles



DP023A 3/8" Mini Butterfly Impact Wrench

- Very compact design and weight only 1.10lbs
- Maximum torque: 60ft-lbs



DP023B 1/4" Mini Butterfly Impact Wrench



DP414 3/8" Mini Butterfly Impact Wrench

- Low weight composite housing
- Maximum torque: 95ft-lbs



DP228 3/4" Heavy Duty Impact Wrench

- Rocking dog impact mechanism
- Rugged die casting Aluminum housing and push button forward and reverse
- Protective rubber nosepiece
- Maximum torque: 500ft-lbs



DP396 1" Pistol Grip Impact Wrench

- Twin hammer impact mechanism
- Six speed power regulator with forward and reverse switch
- Compact size with side handle for better control
- Silencing handle exhaust directs the air away from the operator
- Maximum torque: 1,500ft-lbs



DP616 1" Impact Wrench

- Pin-less impact mechanism
- Precision machined air motor parts and well heat treated drop-forged anvil for built- to -last application
- Handle-vented to direct exhaust away from the operator
- Extended 8in. anvil for extra deep reach
- Side support handle for better control during operation
- Maximum torque: 1,800 ft-lbs



Specifications:

Model	Drive Size in	Free Speed rpm	Max. Torque ft.lbs	Average Air Cons. cfm	Air Pressure psi	Net Weight kg	Air Inlet in	Min. Hose size in	Packing (QTY/N.W/G.W/VOL.) pcs/kg/kg/cuft
DP980	3/8	10000	95	4.0	90	0.90	1/4	3/8	20/21.0/22.0/0.65
DP414	3/8	10500	95	4.0	90	0.90	1/4	3/8	20/21.0/22.0/0.65
DP023A/B	3/8, 1/4	12000	60	4.0	90	0.50	1/4	3/8	20/11.0/12.0/0.65
DP228	3/4	4500	500	7.0	90	4.60	1/4	3/8	4/20.0/21.0/0.90
DP396	1	3800	1500	11	90	7.10	3/8	1/2	4/30.0/31.0/1.12
DP616	1	3500	1800	17	90	16.6	1/2	1/2	2/35.0/36.0/1.74

DP312-1380 1" IMPACT WRENCH

- Pin-less impact mechanism
- Maximum torque:2,500ft-lbs



DP312-1380S 3" ANVIL



DP128 1" IMPACT WRENCH

- Pin-less impact mechanism
- Precision machined air motor parts and well heat treated drop-forged anvil for built- to -last application
- Handle-vented to direct exhaust away from the operator
- Extended 8in. anvil for extra deep reach
- Side support handle for better control during operation
- Maximum torque: 1,800 ft-lbs



D312-1100 1" IMPACT WRENCH

- Pin-less impact mechanism
- Maximum torque:1,800ft-lbs



DP312-1690 1" IMPACT WRENCH

- Pin-less impact mechanism
- Maximum torque:3,200ft-lbs



DP312-1680 1" IMPACT WRENCH

- Pin-less impact mechanism
- Max. Torque: 3,000 ft-lbs.



DP312-1580 1" IMPACT WRENCH

- Pin-less impact mechanism
- Max. Torque: 2,800 ft-lbs.



Specifications:

Model	Drive Size in	Free Speed rpm	Max. Torque ft.lbs	Average Air Cons. cfm	Air Pressure psi	Net Weight kg	Air Inlet in	Min. Hose size in	Packing (QTY/N.W/G.W/VOL.) pcs/kg/kg/cuft
DP128	1	3200	1800	10	90	15.0	1/2	1/2	2/30.0/31.0/1.74
DP312-1380	1	3500	2500	12	90	15.0	1/2	1/2	2/30.0/31.0/1.74
DP312-1100	1	3000	1800	13	90	14.8	1/2	1/2	2/30.0/31.0/1.74
DP312-1690	1	3500	3200	13	90	15.0	1/2	1/2	2/30.0/31.0/1.74
DP312-1680	1	3800	3000	13	90	15.0	1/2	1/2	2/30.0/31.0/1.74
DP312-1580	1	4000	2800	13	90	15.0	1/2	1/2	2/30.0/31.0/1.74



DP320023 3/8" Ratchet Wrench

- An excellent tool for small engine repair, water pumps, headlight service work, bench and dashboard work
- Compact head design allows greater flexibility in tight areas
- Easy to grip reverse lever for simple directional changes
- Hardened gears allow greater durability over other economically priced ratchets
- Maximum torque: 50 ft-lbs

DP320024 1/2" Ratchet Wrench



DP410 3/8" Ratchet Wrench

- Cushion grip handle for comfort and excellent grip handling
- Single pawl ratchet design for most reliability
- Maximum torque: 50ft-lbs



DP933 3/8" Ratchet Wrench

- Twin pawls ratchet mechanism
- Soft handle grip for comfortable control
- 360° Rotational exhaust diffuser reduces tool noise and directs air away from the operator
- 3 Step-regulator , low noise level 85 dBa
- Maximum torque: 50ft-lbs



DP932 3/8" Ratchet Wrench

- Cushion grip handle for comfort and excellent grip handling
- Through handle forward exhaust directs air away from the operator
- Full ball bearing construction
- Maximum torque: 50ft-lbs



DP3320 3/8" Ratchet Wrench

- Very unique composite housing design
- Full ball bearing construction
- Maximum torque: 50ft-lbs



DP320024K 1/2" Ratchet Wrench Kit

- Contents:
1-1/2" Ratchet Wrench;
4-1/2" Dr. Impact Socket(11, 12, 13, 14mm)
1-Swivel Hose Connector; 1-Male Plug;
1-3/8" Dr. Screwdriver Bit Holder;
1-3/8" To 1/2" Adaptor; 1-1/2" Dr. 3" Ext. Bar;
4-1/4" Hex. Screwdriver Bits;
1-Blow Molded Case



DP931 3/8" Mini Ratchet Wrench

- Cushion grip handle for comfort and excellent grip handling
- Twin Pawls ratchet mechanism provides smooth and consistent operation
- Rear exhaust design
- Maximum torque: 20ft-lbs

DP930 1/4" Mini Ratchet Wrench

- Maximum torque: 15ft-lbs

Specifications:

Model	Drive Size	Free Speed	Max. Torque	Average Air Cons.	Air Pressure	Net Weight	Air Inlet	Min. Hose size	Packing (QTY/N.W/G.W/VOL.)
	in	rpm	ft.lbs	cfm	psi	kg	in	in	pcs/kg/kg/cuft
DP320023/024	3/8,1/2	160	50	4.0	90	1.2	1/4	3/8	20/25.0/26.0/0.71
DP410	3/8	160	50	4.0	90	1.2	1/4	3/8	20/25.0/26.0/0.71
DP933	3/8	180	50	4.0	90	1.2	1/4	3/8	20/25.0/26.0/0.71
DP3320	3/8	180	50	4.0	90	1.1	1/4	3/8	20/25.0/26.0/0.71
DP932	3/8	180	50	4.0	90	1.2	1/4	3/8	20/25.0/26.0/0.71
DP931	3/8	250	20	3.6	90	0.7	1/4	3/8	20/15.0/16.0/0.65
DP930	1/4	250	15	3.6	90	0.7	1/4	3/8	20/15.0/16.0/0.65

DP319115 Air Hammer-Short Stroke

- Ideal for muffler and pipe removal, body shop work, shock work, scraping rust, and light front-end work
- Alloyed steel barrel and heat-treated piston for longer life
- Built in regulator to match speed to the job
- Adjustable air regulator and speed control
- Four round headed chisels-Include ripper, bolt cutter, flat and tapered punch chisels

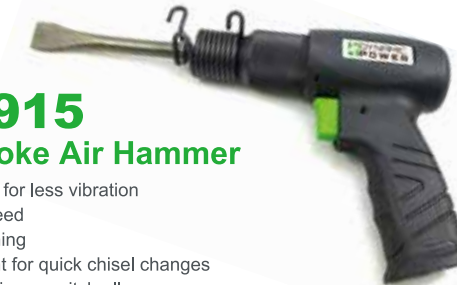


DP319119 Medium Stroke Air Hammer



DP319915 Medium Stroke Air Hammer

- Composite housing for less vibration
- 3,700 BPM free speed
- .401 in. shank opening
- Retainer attachment for quick chisel changes
- Oversized On/Off trigger switch allows operator to regulate performance



DP319250 Heavy Duty Air Hammer



DP987 Medium Stroke Air Hammer

- Composite housing for less vibration
- 3,700 BPM free speed
- .401 in. shank opening
- Retainer attachment for quick chisel changes
- Oversized On/Off trigger switch allows operator to regulate performance



DP620 Vibration Damped Air Hammer

- Composite housing for less vibration
- 3,000 BPM free speed
- Isolated cylinder design reduces vibration by up to 50% over conventional air hammers
- Quick change retainer for fast chisel changes
- Ergonomic handle design for added comfort
- Extra length cylinder for hardest hitting power



DP8630 Air Chiseler

- Ideal for automotive maintenance & sheet metal works, for abruption & cutting works
- Simple structure for less trouble
- Compact, light weight and high power



DP8635 Air Needle Scaler

- Ideal for automotive maintenance & sheet metal works, for abruption & cutting works
- High-speed, high-power & smooth operation
- Compact, light weight and high power



Specifications:

Model	Stroke Length	Blows Per Minute	Chisel Shank	Average Air Cons.	Air Pressure	Net Weight	Air Inlet	Min. Hose size	Packing (QTY/N.W/G.W/VOL.)
	in	rpm	in	cfm	psi	kg	in	in	pcs/kg/kg/cuft
DP319115	1-5/8	4500	0.401	4.0	90	1.5	1/4	3/8	10/15.0/16.0/0.75
DP319119	2-5/8	3500	0.401	4.0	90	1.6	1/4	3/8	10/17.0/18.0/0.85
DP319250	3-5/8	2200	0.401	5.0	90	1.7	1/4	3/8	10/18.0/19.0/0.95
DP987	2-5/8	3700	0.401	4.0	90	1.42	1/4	3/8	10/14.5/15.5/0.85
DP319915	2-5/8	3700	0.401	4.0	90	1.42	1/4	3/8	10/14.5/15.5/0.85
DP620	2-5/8	3000	0.401	4.0	90	1.85	1/4	3/8	10/20.0/21.0/1.10
DP8630	1-1/8	4600	/	4.0	90	1.82	1/4	3/8	10/20.0/21.0/0.85
DP8635	1-1/8	4600	/	4.0	90	2.84	1/4	3/8	10/29.0/30.0/0.85

DP313326 1/4" DIE GRINDER

- At 20,000 rpm, provides the speed to remove material quickly
- Complete with 1/4" or 6mm collet
- Built-in regulator to match speed to the job
- Safety trigger prevents inadvertent operation
- Rear exhaust



DP313325 1/4" DIE GRINDER

- 25,000 rpm
- Rear Exhaust



DP313324 1/4" DIE GRINDER

- 25,000 rpm
- Front Exhaust



DP313323 1/4" ANGLE DIE GRINDER

- Angle head provides easy access into tight space
- 22,000 rpm
- Rear Exhaust



DP952 1/4" DIE GRINDER

- Ergonomic double injected soft handle grip for more comfort
- Safety lock-off lever prevents accidental start-up and adds more safety.
- Heavy duty ball bearing construction provides smooth operation and durability
- Free Speed: 20,000RPM



DP220 1/4" DIE GRINDER

- Rubberized over molded handle for added comfort
- Precision bearings reduce vibration and spindle run-out
- Built-in silencing reduces noise level
- Throttle lever with safety lock-off mechanism avoids accidental start-ups
- Free Speed: 20,000 RPM



DP313329 1/4" DIE GRINDER KIT

- Die Grinder plus 10 different shank-mounted stones for flexibility to meet different grinding & deburring job applications
- Contents:
1-1/4" Air Die Grinder
5-1/4" Shank-mounted Stones; 5-1/8" Shank-mounted Stones;
1-1/8" Collet; 2-Open End Spanners; 1-Nipple; 1-Blow Molded Case



DP420 1/4" DIE GRINDER

- Cushion grip handle for comfort and excellent handling
- 22,000 rpm
- Rear Exhaust



DP951 1/4" ANGLE DIE GRINDER

- Ergonomic soft handle grip for more comfort
- Safety lock-off lever prevents accidental start-up and adds more safety.
- Rotational exhaust diffuser reduces tool noise level and directs air away from the operator
- Free Speed: 20,000RPM



5PC. 1/4 " Shank Grinding Stones



10PC. 2" Surface Prep. kit

Specifications:

Model	Collet Size	Free Speed	Average Air Cons.	Air Pressure	Net Weight	Air Inlet	Min. Hose size	Packing (QTY/N.W/G.W/VOL.)
	in	rpm	cfm	psi	kg	in	in	pcs/kg/kg/cuft
DP313324	1/4	25000	3.0	90	0.30	1/4	3/8	20/8.0/9.0/0.36
DP313325	1/4	25000	3.0	90	0.35	1/4	3/8	20/9.0/10.0/0.42
DP313326	1/4	20000	4.0	90	0.55	1/4	3/8	20/11.0/12.0/0.57
DP313323	1/4	20000	4.0	90	0.65	1/4	3/8	20/13.0/14.0/0.58
DP420	1/4	22000	4.0	90	0.42	1/4	3/8	20/10.0/11.0/0.57
DP952	1/4	20000	4.0	90	0.63	1/4	3/8	20/13.0/14.0/0.57
DP951	1/4	20000	4.0	90	0.63	1/4	3/8	20/13.0/14.0/0.57
DP220	1/4	20000	4.0	90	0.63	1/4	3/8	20/13.0/14.0/0.57

DP313330 3" Air Cut-off Tool

- Max. Speed: 22,000 rpm
- Suitable for cutting car panel thickness material. Ideal also for cutting exhaust brackets
- Fitted with metal safety guard and throttle lever safety device to prevent accidental operation
- Rear exhaust directs air away from workpiece
- Built-in regulator to match speed to the job



5PC. 3" Cut-off Discs



DP315975 6" High Speed Sander

- Low weight composite housing
- Large motor provides ultimate stall resistance
- Tease trigger for speed control
- Free speed: 20,000RPM



DP960 6" Orbital Palm Sander

- Contoured comfort grip and composite housing for more comfort
- Double sealed bearings provide durability and smooth operation
- Orbital sander self-generated vacuum
- Built-in regulator for easy speed control
- Free speed: 12,000 RPM



DP315251 5" Air Sander

- Rubber comfort grip reduces vibration
- For use on metals, aluminum, plastics and more
- Adjustable speed regulator
- Built-in air regulator
- Maximum speed: 12,000 RPM



DP953 3" Air Cut-off Tool

- Ergonomic soft handle grip for more comfort
- Lock-off throttle lever prevents accidental start-ups and adds more safety
- See through transparent safety shield
- Free Speed: 20,000RPM



DP210 3" Air Cut-off Tool

- Rubberized over molded handle for added comfort
- Precision bearings reduce vibration and spindle run-out
- Built-in silencing reduces noise level
- Throttle lever with safety lock-off mechanism avoids accidental start-ups
- Rotational safety guard provides optimal cutting angle
- Free Speed: 20,000 RPM



DP9976 6" Dual Action Sander

- Dual action orbital sander for fast removal as well as fine finishing
- Contoured comfort handle grip for more comfort
- Built-in regulator for easy speed control
- Free speed: 10,000RPM



10PC. 6" Sanding Discs



6" Sander Pad

DP318131 3/8" Reversible Drill

- Low weight double injected composite housing and ergonomic trigger design for more comfort
- Ball bearing construction for long endurance
- Side mounted forward/reverse lever allow for one-handed operation
- Provides full power in forward and reverse
- Ideal tool for drilling and screw driving
- Free speed: 2,200 RPM



Specifications:

Model	Pad Size	Free Speed	Average Air Cons.	Air Pressure	Net Weight	Air Inlet	Min. Hose size	Packing (QTY/N.W/G.W/VOL.)
	in	rpm	cfm	psi	kg	in	in	pcs/kg/kg/cuft
DP315975	6	20000	3.3	90	0.82	1/4	3/8	10/9.0/10.0/0.90
DP9970	6	10000	3.1	90	1.86	1/4	3/8	10/20.0/21.0/1.10
DP315251	5	12000	3.1	90	1.50	1/4	3/8	10/16.0/17.0/1.00

Model	Collet Size	Free Speed	Average Air Cons.	Air Pressure	Net Weight	Air Inlet	Min. Hose size	Packing (QTY/N.W/G.W/VOL.)
	in	rpm	cfm	psi	kg	in	in	pcs/kg/kg/cuft
DP313330	3" Disc	22000	6.5	90	1.30	1/4	3/8	10/13.0/14.0/0.71
DP953	3" Disc	20000	6.5	90	0.80	1/4	3/8	10/8.0/9.0/0.71
DP210	3" Disc	20000	6.5	90	0.80	1/4	3/8	10/8.0/9.0/0.71
DP318131	3/8	2200	3.3	90	0.95	1/4	3/8	10/10.0/11.0/0.68



DP317157 Continuous Flow Grease Gun

- This newly designed Grease Gun with ergonomic cushioned grip is great for maintaining trailers, boats, mowers, automobiles and RVs.
- Continuous flow while trigger is depressed
- Heavy-duty spring and exclusive piston design
- Uses 14-Ounce cartridge bulk filled or canister filled
- Including both 12" rigid steel tube and Nylon material flexible hose with grease fitting



DP32711 Air Grease Gun

- Forces grease into fittings with far more power than manual gun
- Trigger-release design makes it easier to reach recessed or hard-to-get-at fittings
- Uses 14-Ounce cartridge bulk filled or canister filled
- Including both 12" rigid steel tube with grease fitting

DPPT-05 Siphon-Feed Sandblaster Set

- Easily removes rust, scale and paint
- Draws abrasives from bucket or bag
- Includes sandblast gun, hose, pick-up tube
- Ceramic sandblast nozzle & air jet



DP707 Sandblasting Set

- 3 air jets-1/8", 3/32", 5/64"
- 10ft. rubber hose

DP706 Sandblasting Kit



- Lightweight gun with ceramic tip for smooth operation
- 3 air jets-1/8", 3/32", 5/64". allows the user to adapt the tool output to the job
- 10ft. rubber hose and connector easily connect to the 50 lb. Hopper with screen

DP355202 Sandblasting Kit

- Easily removes rust, scale and old paint
- Draws abrasives from bucket or bag
- Includes sandblast gun, hose, pick-up tube
- Ceramic sandblast nozzle & air jet



Specifications:

Model	Operating Pressure	Delivery Pressure	Capacity	Average Air Cons.	Net Weight	Air Inlet	Min. Hose size	packing (QTY/N.W/G.W/VOL.)
	psi	psi	oz	cfm	kg	in	in	pcs/kg/kg/cuft
DP317157	60-90	2400-3000	14.0	4.0	1.5	1/4	3/8	10/16.0/17.0/1.88
DP32711	60-90	3600	14.0	5.0	1.5	1/4	3/8	10/16.0/17.0/1.88

DPW2-10K 10 PC. Air Tool Kit



- Contents:
- 1-1/2" Impact Wrench;
- 1-3/8" Air Ratchet;
- 5-1/2" Impact Socket (3/8", 1/2", 9/16", 5/8", 13/16)
- 1-5" Ext.Bar
- 1-3/8"to 1/2" Adapter
- 1-Blow Molded Case



DP854K 15 PC. Air Tool Kit

- Contents:
- 1-1/2" Impact Wrench;
- 1-3/8" Ratchet Wrench;
- 1-Single Shot Grease Gun;
- 1-1/4" Angle Die Grinder
- 1-6" D.A. Sander;
- 5-1/4" NPT Male Plugs;
- 1-1/4" NPT Female Plug;
- 1-1/4" NPT Female Coupler;
- 1-12Ft. Pipe Thread Tape,
- 1-3/8" x 25Ft. Rubber Air Hose
- 1-Blow Molded Case
- *11/16-in. & 7/16-in. Open End Wrenches for Die Grinder



DP008K 24 PC. Air Tool Kit

- Contents:
- 1-1/2" Impact Wrench
- 1-3/8" Ratchet Wrench
- 1-Air Hammer
- 1-1/4" Die Grinder
- 4-1/4" NPT Male Plugs
- 1-1/4" NPT Female Plug
- 1-1/4" NPT Female Coupler
- 6-Impact Sockets
- 3-Grinding Stones
- 2-Adjustment Wrenches
- 1-Spring Retainer
- 1-Thread Tape
- 1-Blow Molded Case

DPW3-50K 50 PC. Air Tool Kit



- Contents:
- 1-1/2" Impact Wrench; 1-3/8" Ratchet Wrench;
- 5-Air Hammer w/Chisels;
- 10-Impact Sockets(1/2"to3/4" and 11,12,13,14,17mm);
- 1-3/8"to 1/2" Adapter; 1-3/8"Dr. 3"Ext.Bar,5-1/4"Male Plugs;
- 1-Female Coupler; 1-Teflon Tape; 1-Air Gun; 1-Rubber Nozzle;
- 1-Safety Nozzle; 2-Sport Needle & Adapter; 1-5/32" Allen Wrench;
- 1-Ball Foot Air Chuck; 1-High Pressure Nozzle; 1-Tapered Nozzle;
- 2-1/4" to 1/4" Female & Male Hose Connector; 1-Air Tool Oil;
- 1-1/4" Female Plug; 1-Blow Mold Case; 1-Swivel Hose Connector;
- 1-Dual foot Tire Gauge; 1-Dr.Screwdriver Bit Holder;
- 6-1/4"Hex.Drive Bits; 1-Mini Oiler



DP852K 11 PC. Air Tool Kit

- Contents:
- 1-1/2" Impact Wrench;
- 1-3/8" Ratchet Wrench;
- 1-Air Hammer;
- 3-1/4" NPT Male Plugs;
- 1-1/4" NPT Female Plug;
- 1-1/4" NPT Female Coupler;
- 1-12Ft. Pipe Thread Tape,
- 1-3/8" x 25Ft. Rubber Air Hose
- 1-Blow Molded Case



DPK00600SG 20 PC. Spray Gun Kit

- Contents:
- 1-H.V.L.P Spray Gun
- 1-Gravity Feed Spray Gun
- 2-600cc Paint Cup
- 2-125cc Paint Cup
- 2-Air Guage
- 1-Cleaning Kit
- 5-Paper Paint Strainers
- 5-Mesh Filters
- 1-Blow Molded Case



DP313321B 1/8" AIR MICRO DIE GRINDER

- 1/4" Air Inlet. 1/8" Collect Size
- Ideal for sanding, polishing and grinding surfaces
- Twist throttle provides variable speed control
- Free Speed: 70,000 rpm. Maximum Pressure 90 PSI
- With Bonus Part. Lightweight and ideal for tight spots



Air Brush

- Working Pressure is 15-50 PSI
- Double-action Trigger and the Rear adjustable locknut design could make users to control the quantity of air and fluid released exactly as they want in work
- Airbrush can be commonly used for Body Art, Nail Art, Cake decorating, Paint work, Make up, Temporary Tattoos, Hobbies, Crafts etc.



DP370130

- 0.3mm Nozzle
- 7cc Gravity-feed Cup



DP370135

- 0.2mm Nozzle
- 2cc Gravity-feed Cup



DP370134

- 0.3mm Nozzle
- 7cc / 22cc Cup

DP4920SSG General Purpose Spray Gun

- Easily changes from siphon to pressure-feed with the twist of a knob for use with a variety of materials
- Pattern control adjusts fan size for better results
- Convertible from non-bleeder to bleeder style for use with standard or tankless air compressors
- Works with 1000cc paint tanks and remote canisters



DP4910SSG Touch Up Spray Gun

- Provides full size pattern in a small package
- Nickel plated body provides easy clean-up
- Features both fluid and pattern controls
- Includes 200cc canister

Specifications:

Model	Type of Feed	Fluid tip	Canister Capacity	Air Con. @ 40psi	Air Pressure	Net Weight	Air Inlet	Fluid Inlet	Packing (QTY/N.W/G.W/VOL.)
	in	mm	cc	cfm	psi	kg	in	in	pcs/kg/kg/cuft
DP4920SSG	Suction	1.8	1000	8.0	45	1.0	1/4	3/8	10/8.0/9.0/2.23
DP4910SSG	Suction	1.8	200	4.5	45	0.42	1/4	1/4	24/11.0/14.5/1.55
DP371097	Suction	1.8	1000	10	50	1.2	1/4	3/8	10/13.0/14.0/2.14

DP371097 Siphon Feed Spray Gun

- Superbly balanced spray gun suitable for applying finishing coats
- Pattern/Material/Air adjustment controls
- Includes 1,000cc anti-drip canister



DPD98V HVLP Gravity Feed Spray Gun

- Ergonomic knobs for precise control of fluid, air flow and spray pattern
- Coated aluminum body with removable fluid nozzle and air diffuser for easy cleaning
- Lightweight aluminum construction for balanced handling and reduced fatigue
- Enhanced air distribution for better paint atomization and less overspray
- Long-life seals to prevent leak



DPD98V-CY Limited Edition of color Printing Pistol



DPD97 Siphon Feed Spray Gun

- Suitable for low viscosity paints, lacquers, enamels, stains and urethanes
- Coated aluminum body and removable air diffuser for easy cleaning
- Ergonomic knobs for precise control of fluid, air flow and spray pattern
- Lightweight aluminum construction
- Long-life seals



DPD97V-CY Limited Edition of color Printing Pistol



DPW98V/G Gravity Feed HVLP Spray Gun

- High volume, low pressure design in high transfer efficiency to save paint up to 25%, reduce overspray and protect environment
- Perfect atomization used for auto and particle size
- Filter removes dirt particles from paint preventing defects
- Pattern/Material/Air adjustment controls
- 600cc plastic cup allows viewing of paint fluid level

DPW98G High Pressure Air Cap



DPW98V HVLP Air Cap



DP4850 Gravity Feed Composite HVLP Spray Gun

- Very unique and low weight composite housing with solvent resistance design
- High volume, low pressure design in high transfer efficiency to save paint up to 25%, reduce overspray and protect environment
- 600cc plastic cup allows observing of paint fluid level
- Precisely machined brass spray cap for perfect pattern and atomization performance
- Stainless steel & needles for ultimate reliability



DP4840 Gravity Feed HVLP Spray Gun

- High volume, low pressure design in high transfer efficiency to save paint up to 25%, reduce overspray and protect environment
- 600cc plastic cup allows observing of paint fluid level
- Precisely machined brass spray cap for perfect pattern and atomization performance
- Stainless steel & needles for ultimate reliability



Specifications:

Model	Type of Feed	Fluid tip	Canister Capacity	Air Con. @ 40psi	Air Pressure	Net Weight	Air Inlet	Fluid Inlet	Packing (QTY/N.W/G.W/VOL.)
		in mm	cc	cfm	psi	kg	in	in	pcs/kg/kg/cuft
DPD98V	Gravity	1.4	600	9.5	29	0.6	1/4	/	10/10.0/11.0/1.33
DPD97	Suction	1.8	1000	9.5	40-45	0.9	1/4	3/8	10/11.0/12.0/2.14
DPW98V	Gravity	1.4, 1.7, 2.2	600	4.3	25	0.6	1/4	/	10/10.0/11.0/1.33
DPW98G	Gravity	1.4, 1.7, 2.2	600	6.3	30-50	0.6	1/4	/	10/10.0/11.0/1.33
DP4850	Gravity	1.4, 2.2	600	4.3	30-50	0.53	1/4	/	10/10.0/11.0/1.33
DP4840	Gravity	1.4, 1.8	600	4.0	30-50	0.6	1/4	/	10/10.0/11.0/1.33



DPT20 Air Texture Hopper Spray Gun

- Applies interior wall & ceiling textures painting
- 5,000cc Hopper with gravity-feed design
- 4.5mm, 6mm, 8mm-3 standard spray tips
- Large, comfortable pistol grip



DPW71S



DPW71G

DPW71S/G

Siphon/Gravity Feed Spray Gun

- Mainly used for spray-painting medium and highly adhesive, surface such as car, furniture, machinery, etc.
- Pattern/Material/Air adjustment controls
- Includes 600cc paint canister/400cc paint cup



DPW77S



DPW77G

DPW77S/G

Siphon/Gravity Feed Spray Gun

- Mainly used for spray-painting medium and highly adhesive, surface such as car, furniture, machinery, etc.
- Pattern/Material/Air adjustment controls
- Includes 1000cc paint canister / 400cc paint cup

DPF2 Mini Gravity Feed Spray Gun

- Mainly used for spray-painting drawing, toys and handicraft
- Pattern/Material adjustment controls
- Includes 200cc paint cup



DPW871 High Viscosity Paint Spray Gun

- This gun is mainly used for interior or exterior walling painting, using high gloss paint
- Pattern/Material/ adjustment controls
- Pressure feed
- 1,000cc pressure paint canister



DPW57-N Airless Paint Sprayer Tip Guard

- Use with airless paint sprayer & all sprayers with standard 7/8" thread

DPW57-NL 20" Tip Extension

- Ideal for High, Low and recessed Areas
Complete Paint Projects Faster & Easier
Lightweight & Durable Design



DPW57 Airless Paint Spray Gun

- Airless Paint Spray Gun is ideal for professionals and homeowners for spraying unthinned latex paints, primers, and stains.
- Full 4-finger trigger for comfort and control
- Thumb-engaged safety lock to prevent misfires
- Maximum operating pressure of up to 3600 PSI
- Replaceable in-handle filter removes residual and deters tip clogging
- Built-in hose swivel deters hose twisting



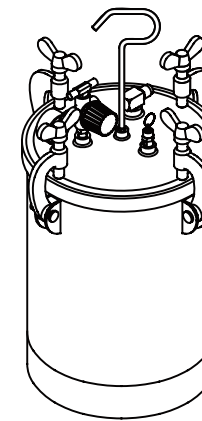
DPW57-100M 100 Mesh



Spray Gun Filter

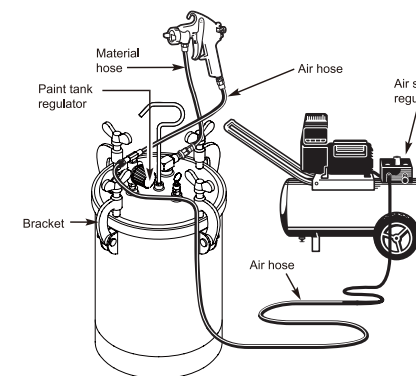
- Helps remove debris from paint or coating for smooth results
- Reduces plugging at the spray tip

DPW57-60M 60 Mesh



DP2812 2.5 Gallon Paint Tank

- Paint tank is designed for large volume projects using spray guns, paint rollers and other application equipment
- The tank is capable of holding 2.5 gallons of bulk paint or a 1 gallon can of paint may be placed directly inside the tank.
- Contents:
1-2.5 Gallon galvanized steel tank
and die cast aluminum tank lid
1-Tank Pressure Regulator w/Gauge
1-Carry Handle



DPPT281403 2.5 Gallon Stainless Steel Paint Tank

- 25-40 PSI Normal Working Pressure
- 50 PSI Maximum Working Pressure
- Contents:
1-2.5 Gallon Stainless Steel Paint Tank and Lid
1-Tank Pressure Regulator w/Gauge
1-3/8"x15' Material Hose
1-1/4"x15' Air Hose
1-Carry Handle



Specifications:

Model	Type of Feed	Fluid tip	Canister Capacity	Air Con. @ 40psi	Air Pressure	Air Inlet	Fluid Inlet	Packing (QTY/N.W.G./VOL.)
	in	mm	cc	cfm	psi	in	in	pcs/kg/kg/cuft
DPT20	Gravity	4.5, 6.0, 8.0	50 00	7.0	60	1.1	1/4	2/2.8/3.8/2.80
DPW71S	Suction	1.0,1.3,1.5,1.8	600	3.2	40-60	1/4	1/4	10/10.0/11.5/1.32
DPW71G	Gravity	1.0,1.3,1.5,1.8	400	3.2	40-60	1/4	1/4	10/9.0/10.0/1.31
DPW77S	Suction	1.5,2.0,2.5	1000	4.2	50-70	1/4	3/8	10/12.0/13.5/1.73
DPW77G	Gravity	1.5,2.0,2.5	400	4.2	50-70	1/4	3/8	10/10.0/11.0/1.42
DPF2	Gravity	0.5	200	2.2	35	1/4	1/4	20/9.0/10.0/1.45
DPW871	Pressure	2.5	1000	10.0	45	1/4	1/4	10/14.0/15.0/2.00



DPHR2-309/815



DPHR3-315



DP351610

Retractable Air Hose Reel

- Half enclosed design version
- Compact case design suited to work bench applications
- Automatic hose reel. Ratchet or free-running operation
- High quality special PP material durable construction, lightweight and corrosion resistant design
- Supplied with wall/ceiling mounting brackets
- Available with PU, PVC or Hybrid hose



Retractable Air Hose Reel

- Enclosed design version
- Compact case design suited to work bench applications
- Automatic hose reel. Ratchet or free-running operation
- High quality special PP material durable construction, lightweight and corrosion resistant design
- Supplied with wall/ceiling mounting brackets
- Available with PU, PVC or Hybrid hose



**DP16349
DPHR5-309/315**



DPHR4-309/315



DPHP-308/315

Retractable Air Hose Reel

- Retractable design allows automatic rewind of air hose
- Durable composite drum with firm steel side support mounting bracket provides durability
- Guide adjusts to 45 degrees enabling easy use when mounted to bench or wall
- Hose guide uses a 4-roller design to help reduce hose wear
- Mounts easily to workbench or wall



DPHR6-315

Specifications:

Model	Inlet/Outlet I.D. x Length in in x ft	Hose Size I.D. x Length in x ft	Hose Type	Max. Pressure psi	Fluid	Lead-in Hose Length ft	Packing (QTY/N.W/G.W/VOL.) pcs/kg/kg/cuft
DP351610	1/4 / 1/4	1/4 x 33	PU	250	Air	1.5	6/18.0/19.0/3.15
DPHR2-309	1/4 / 1/4	3/8 x 30	PVC	300	Air	1.5	4/18.0/20.0/2.84
DPHR2-815	1/4 / 1/4	5/16 x 50	PU	250	Air	1.5	4/18.0/20.0/2.84
DPHR3-315	1/4 / 1/4	3/8 x 50	PVC	300	Air	1.5	1/6.4/7.5/1.32
DPHR4-309	1/4 / 1/4	3/8 x 30	PVC	300	Air	1.5	4/18.0/20.0/2.84
DPHR4-315	1/4 / 1/4	3/8 x 50	PVC	300	Air	1.5	2/28.5/30.0/2.4
DP16349	1/4 / 1/4	3/8 x 50	PVC	300	Air	1.5	1/7.0/7.5/1.43
DPHR5-309	1/4 / 1/4	3/8 x 30	PVC	300	Air	1.5	1/7.0/7.5/1.43
DPHR6-315	1/4 / 1/4	3/8 x 50	Hybrid	150	Air	1.5	1/6.3/7.3/1.43
DPHP-315	1/4 / 1/4	3/8 x 50	PVC	300	Air	1.5	2/14.0/16.0/1.69
DPHP-308	1/4 / 1/4	3/8 x 25	PVC	300	Air	1.5	2/14.0/16.0/1.69

Retractable Metal Air Hose Reel

- Retractable design allows automatic rewind of air hose
- Heavy duty reinforced steel construction with paint coating
- Strong reel supported on both/single side by pedestal style base and arm guide
- Four roller non-snap hose guides reduce wear
- Spring protector keeps hose against damage when pulled and stretched
- Mounts to floor, wall or ceiling



DP66424
3/8"x50Ft. Air Hose
Single Armed

DP66422
3/8"x25Ft. Air Hose
Single Armed



**DPHA-4015
DPHA-4615**
Double Armed

Industrial Grade Retractable Metal Air Hose Reel

- Industrial level quality suitable for heavy duty industries or shipping building applications
- Net weight:13.5 kg



DPHL-4815
3/8"x50Ft. Air Hose
Single Armed

DPHD-220 Manual Air Hose Reel

- Open version.
- Durable composite drum on electroplate aluminum stand
- Model feature drum brakes to promote a safe tidy working environment
- Can be used mobile or permanently installed Truck mount



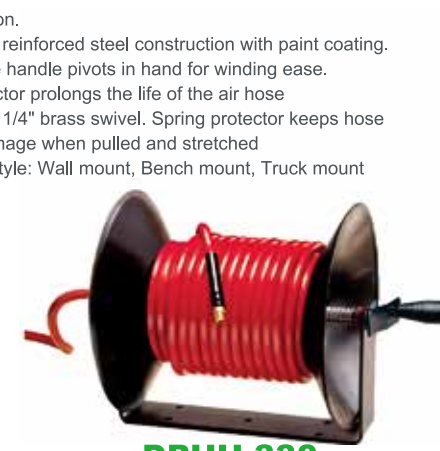
DPHR-840 Air Hose Reel with Metal Swivel Base

- 360° Swivel Base
- Fold away handle reduces shipping/storage space
- 1/4" Swivel hose fittings
- Fitted with 40M. Polyurethane braided reinforced air hose



Manual Air Hose Reel

- Open version.
- Heavy duty reinforced steel construction with paint coating.
- Swivel style handle pivots in hand for winding ease.
- Bend restrictor prolongs the life of the air hose
- Heavy duty 1/4" brass swivel. Spring protector keeps hose against damage when pulled and stretched
- Mounting Style: Wall mount, Bench mount, Truck mount



DPHU-330



DPHC-215



DPHV-215/315



DPHV-209

Specifications:

Model	Inlet/Outlet I.D. x Length in in x ft	Hose Size I.D. x Length in x ft	Hose Type	Max. Pressure psi	Fluid	Lead-in Hose Length ft	Packing (QTY/N.W/G.W/VOL.) pcs/kg/kg/cuft
DPHA-4015	1/4 / 1/4	3/8 x 50	PVC / Rubber	300	Air,Water,Oil	3.0	1/12.5/13.5/1.57
DPHA-4615	3/8 / 3/8	1/2 x 50	PVC / Rubber	300	Air,Water,Oil	3.0	1/15.0/15.5/1.87
DP66424	1/4 / 1/4	3/8 x 50	PVC / Rubber	300	Air,Water,Oil	3.0	1/11.5/12.5/1.57
DP66422	1/4 / 1/4	3/8 x 25	PVC / Rubber	300	Air,Water,Oil	3.0	1/8.9/9.7/0.99
DPHD-220	1/4 / 1/4	1/4 x 60	PVC	300	Air	3.0	4/11.3/13.3/3.23
DPHV-315	1/4 / 1/4	3/8 x 50	PVC	300	Air	3.0	1/7.2/8.0/1.66
DPHV-215	1/4 / 1/4	3/8 x 50	PVC	300	Air	3.0	1/4.7/5.5/1.00
DPHC-215	1/4 / 1/4	3/8 x 50	PVC	300	Air	3.0	1/8.0/8.5/1.21
DPHU-330	1/4 / 1/4	3/8 x 100	PVC	300	Air	3.0	1/9.6/10.6/1.79
DPHR-840	1/4 / 1/4	5/16 x 130	PU	250	Air	3.0	1/9.0/10.0/1.26



Polyurethane Recoil Air Hose

- 1/4" x 25ft (50ft) Polyurethane air hose
- 1/4" Swivel fittings reduce hose twist
- 120PSI Maximum working pressure
- Temp Range: -30 °F to + 150°F
- Bend restrictors for increased hose life
- Self-coiling feature for easy operation and convenient storage



Polyurethane Braided Air Hose

- Very lightweight and flexible
- Good flex feature and resilience characteristics
- Excellent resistance to oils and solvents
- High abrasion-resistance provides extra long life
- Good resistance to hydrolysis and algae in warm water applications
- Size available: 1/4", 5/16", 3/8", 1/2", etc.
- 200 or 250PSI working pressure
- Length 25, 50, 100ft. available, assembly with fittings is available
- Temp Range: -30 °F to + 150°F
- Bend Restrictors for Increased Hose Life



Rubber Air Hose

- Wide range service in general industrial services, automobiles shop, pneumatic tools, etc.
- Oil & Abrasion resistant
- Extended life over PVC, superior durability
- Increased flexibility in cold temperatures
- 300PSI working pressure
- Service Temperature Range: -60°F to 150°F
- Size available: 1/4", 3/8", 1/2"; Length 25, 50, 100ft. etc
- Assembly with fittings also available
- Bend Restrictors for Increased Hose Life



Nylon Recoil Air Hose

- 1/4" x 25 ft (50ft) Nylon recoil air hose
- 1/4" solid brass fittings
- 150PSI Maximum working pressure
- Temp Range: 32 °F to + 120°F
- Spring guards on both ends prolongs the using life
- Self-coiling feature for easy operation and convenient storage



PVC Braided Air Hose

- Economical, light weight, Low temperature alternative to rubber hose
- Excellent abrasion resistance
- 250 or 300PSI working pressure
- Service Temperature Range: 0°F to +130°F
- Size available: 1/4", 3/8", 1/2"
- Length 25, 50, 100ft available, etc.
- Assembly with fittings also available
- Bend Restrictors for Increased Hose Life



Flexible Rubber/PVC Hybrid Air Hose

- Kink resistant under pressure
- Service Temperature Range:-10°F to 150°F
- Maximum working pressure: 300 PSI
- Excellent abrasion-resistant outer cover; includes bend restrictor that reducing wear and tear, prolonging use life of air hose
- Size available: 1/4", 3/8", 1/2"; Length 25, 50, 100ft. etc
- Assembly with fittings also available
- Bright Green color provides high bisibility

Premium Rubber Air Hose

- Exterior wrap provides better ozone resistance and uv protection
- Superior oil and abrasion resistance and cold weather flexibility
- Perfect choice for rugged work environments and garages
- 300PSI working pressure
- Service Temperature Range: -40°F to 190°F
- Size available: 1/4", 3/8", 1/2"; Length 25, 50, 100ft. etc
- Assembly with fittings also available
- Bend Restrictors for Increased Hose Life



3/8" X 30" Rubber Lead-in Air Hose

- 1/4" MNPT Ball Swivel Fitting and 1/4" FNPT fitting
- Reduces Vibration & Impact to Increase Tool life
- Ball Swivel Fitting for Greater Flexibility
- Spring Bend Restrictors Prevent the Hose from Weakening and Breaking after Frequent and Sharp Bends
- Easily Connect to Air Source and Air Tools



3/8" x 50' Air hose tire inflator kit

- 50ft PVC or Hybrid air hose
- 300PSI Maximm working pressure
- Includes Universal Gladhand & Straight Chuck

3/8" x 25' (50') Air Hose W/10Pc. Air Accessories

- Polyurethane Braided Air Hose, PVC Braided Air Hose or Rubber Air Hose
- Air Accessories Includes:
 - 1-Safety Blow Gun
 - 5-Variou Tips
 - 1-1/4" I/M Female Coupler
 - 1-1/4" I/M Male Plug
 - 1-1/4" I/M Female Plug



DP11-63112 12ft. 3 in 1 ABS & Air Power Line Hose

- TWO 3/8" ID RUBBER AIR LINE BRAKE HOSES : Color-coded large grips and 1/2" swivel fittings with color indicators
- ONE 7-WAY ABS ELECTRICAL GREEN CABLE : Industry standard zinc die-cast SAE J560 plugs with cable guards
- SIZE: 12 feet length, 1/2" brass fitting joint. Heavy duty 12 feet trailer air line & ABS wrap cord assembly. 15 feet length available
- Works from -40F to over 200F





Mini Air Compressor

- Oil-less pump design for durability and no maintenance
- Built-in automatic thermal overload protection.
- 1/8"PS outlet male connector
- 4mm x 6mm x 5m PU hose included
- Small volume and light weight for convenient carry
- Low noise during operation, quick air flow, secure operation

Model	Motor Output	Electrical Supply	Free Speed	Working Pressure		Max.Continued Run Pressure		Free Flow Rate	Automatic Pressure Switch	Net Weight
	hp	V/Hz	rpm	psi	kg/cm ²	psi	kg/cm ²	nl/min		kg
DP8C1-001B	1/8	220/50	1400	36-57	2.5-4.0	100	7.0	20	Available	3.3
DP8C1-002B	1/4	220/50	2800	71-100	5.0-7.0	100	7.0	40	Available	3.3
DP8C1-001A	1/8	110/60	1700	36-57	2.5-4.0	114	8.0	15	Available	3.3
DP8C1-002A	1/4	110/60	3400	71-100	5.0-7.0	100	7.0	40	Available	3.3



DP8C1-002-06BK

- Assembled with wheels and handle bar grip for easy move and carrying

DP8C1-002-06B Mini Air Compressor With 6L Tank

- Oil-less pump design for durability and no maintenance
- Built-in automatic thermal overload protection
- 1/4" NPT male outlet, 6L air tank
- Automatic Switch allows motor automatically stop when reaching at 100PSI pressure and run when reducing 70PSI
- Control outlet air pressure with regulator
- Small volume and light weight for convenient carry
- Low noise during operation, quick air flow, secure operation

Model	Motor Output	Electrical Supply	Free Speed	Working Pressure		Max.Continued Run Pressure		Free Flow Rate	Automatic Pressure Switch	Net Weight
	hp	V/Hz	rpm	psi	kg/cm²	psi	kg/cm²	nl/min		kg
DP8C1-002-06B	1/4	220/50	2800	71-100	5.0-7.0	100	7.0	40	Available	8.1
DP8C1-002-06BK	1/4	220/50	2800	71-100	5.0-7.0	100	7.0	40	Available	9.1



DP380020 1/5HP Mini Air Compressor

- High Performance Airbrush Compressor
- Powerful: 1/5 hp, Delivers High Air Volume (0.7 CFM)
- Portable: Light-Weight and Compact w/Carrying Handle
- Automatic On/Off Shutoff



DPJM240 Portable Air Compressor Pump

- Convenience: Plug directly into Cigarette Lighter Socket of your Vehicle. 12VDC, 10 to 15 amps, 120 to 180W. Equipped with 12V-DC Cigarette Lighter Socket Plug, NOT 110V AC plug
- Multiple Uses: Inflate tires on cars, bikes, sedan and midsize SUV. (Engine size under 3.5 liter) Universal valve connector for schrader valve is ready to use. Additional adapters include needles value (for basketball, balls), short cone/long cone adapters (for inflatable kayak, swimming pool accessories, etc)
- Capacity: Does NOT Support truck tires, for instance: light truck tires (LT), heavy duty truck tires or any truck tires
- Easy to Read: 4 Display Units: PSI, KPA, BAR, KG/CM; LED FLASHLIGHT: Bright Torch

DP603 Adjustable Pocket Blow Gun

- Adjustable from a whisper of air to a full volume flow
- Recommended air pressure to 150 PSI maximum
- Knurled nozzle makes handling easy
- Complete with handy pocket clip



DPBG-8 Lever Safety Blow Gun

- Compact design to fit in confined spaces
- Hang up hook for easy storage
- Accepts a variety of accessories
- 1/4" Female NPT inlet



DPPU14-25-4 Recoil Air Hose w/Blow Gun

- 1Pc 1/4"x25Ft. Polyurethane Recoil Air Hose
- 1Pc Blow Gun,
- 1Pc 1/4"NPT I/M Female Coupler
- 1Pc 1/4"NPT I/M Female Plug



Pistol Grip Blow Gun

- Trigger controls airflow to gun tip
- 100mm or 250mm long nozzle reach into confined spaces to blow debris
- Comfortable, lightweight design
- 1/4" Female NPT inlet

DPKS-25 250mm long nozzle

DPKS-10

DPKF-06

DPBG-200 Pistol Grip Blow Gun

- Lightweight plastic pistol grip blow gun
- Hang up hook for easy storage
- 1/4" Female NPT inlet



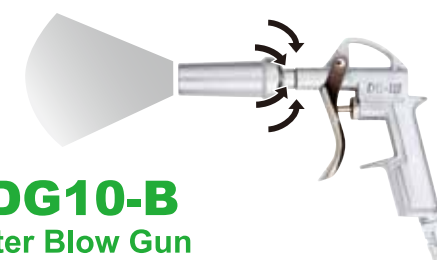
DP16390 6 Piece Blow Gun Set

- Lightweight plastic pistol grip blow gun
- Hang up hook for easy storage
- 1/4" Female NPT inlet



DPDG10-B Booster Blow Gun

- Delivers extra wide spray pattern. Additional air is drawn through holes around nozzle



Air Duster

- Hang up hook for easy storage
- 80mm long nozzle reach into confined spaces to blow debris
- 100psi max.working pressure



DPDG10-1

DPDG10-3

DPEG-6 Cleaning Gun

- Cleans grease off engines
- 9" wand reaches hard-to-reach places
- Includes siphon pickup tube



DPDG10-EK Cleaning Gun

- Cleans grease off engines
- 9" wand reaches hard-to-reach places
- Includes siphon pickup tube



DPDG10-EC Paraffin Spray Gun

- 600cc canister



DP355303 Pistol Style Tire Inflator with Gauge

- Inflation gun, chuck, and gauge are all combined in one easy to use unit
- Clip on design enables hands-free chuck use
- Built-in relief valve for reducing pressure in over-inflated tires
- Assembled with flexible hose for easier use
- 0-150PSI(0-10Bar, 0-1000kPa, 0-10kgf/cm²) gauge



DPTG-6 Dual Head Air Chuck Inflator Gauge

- Easy inflation for Hard-to-Reach valves
- Two-way angled head
- Lever easily controls inflation and bleed-valve reduces excess pressure
- 12" flexible rubber hose assembled
- 6" dual head chuck



DPTG-4 Highly Accurate Dial Inflator Gauge

- Chrome plated castings with Protective rubber gauge boot
- Built-in relief valve for reducing pressure in over-inflated tires
- Assembled with 12" air hose



DPTG-108D Deluxe Inflator Gauge

- Rugged zinc casting, with rubber bumper guard to protect against damage if dropped.
- Easy to read recessed sight glass



Air Line Chucks

- Various air line chucks can be connected to tire inflators for work as desired.

- 1/4" NPT Female Ball Foot Chuck
- 1/4" NPT Male Ball Foot Chuck
- 1/4" Hose Barb Ball Foot Chuck
- 1/4" NPT Female Ball Foot Chuck w/Clip
- 1/4" NPT Female Lock-On Chuck
- 1/4" NPT Female Straight Chuck
- 1/4" NPT Female Angle Chuck
- 1/4" NPT Female Mini Lock-On Chuck

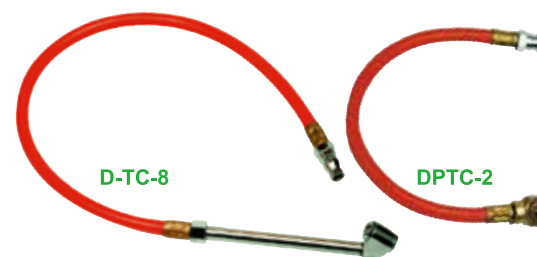
- DPTC-2F
- DPTC-2M
- DPTC-2H
- DPTC-2FC
- DPTC-3
- DPTC-4S
- DPTC-4A
- DPTC-5



Hose Air Chucks

- 15" Hose w/6" Dual Foot Chuck
- 10" Hose w/Ball Foot Chuck

- DPTC-8
- DPTC-2



DPKY01 Digital Tire Gauge

- Ergonomic design comfortably fits hand and features a soft, non-slip surface for sure grip
- Digital display instantly and clearly shows exact reading, eliminating guesswork of analog gauges
- Lighted nozzle and display screen for ultimate visibility in low light or at night
- Digital display instantly and clearly shows exact reading, eliminating guesswork of analog gauges
- CR2032 3V Lithium Coin Cell, three LR44 1.5V Button Cells (All Included inside, lasts at least can be used 8 years)



DP420325B Air Lubricator

- Oil mist lubricator fitted with feed control for fine control of oil/air mix.
- Die cast control head with clear polycarbonate bowl.
- 1/4" female NPT ports



DP420125A Mini Air Filters

- Removes unwanted dirt particles and condensed water to extend tool life
- 5 micron element provides maximum filtration
- Screw-on bowl with manual drain
- 21 SCFM flow capacity at 90 PSI
- 1/4" NPT(F) ports



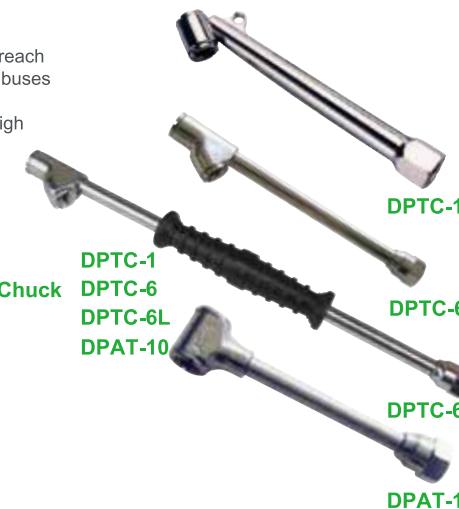
DP1103 Air Line desiccant Filter/Dryer

- Removes dirt, dust, water and oil from air line
- Chemical-resistant material
- 125 PSI maximum pressure
- 1/4" female NPT ports



Air Chucks

- Extended chuck for hard-to-reach valves on tractors, trucks or buses
- 1/4" Female NPT inlet
- AT-10 Extended chuck for high pressure tires on bicycles, motorcycles, mini-bikes, scooters and other cycles



- Dual Foot Chuck
- Straight-On Dual Foot Chuck
- 9" Dual Foot Chuck
- Dual Foot Chuck

- DPTC-1
- DPTC-6
- DPTC-6L
- DPAT-10

DP353325 Air Filter/Regulator/Lubricator

- Industrial quality air control equipment suitable for high volume applications
- Regulator assembly features locking control knob for pre-setting air flow and large, easy to read pressure gauge
- Lubricator includes oil/air mix control and viewing chamber
- When no pressure, water can be drain.
- 1/4", 3/8", 1/2" female NPT ports



DP420325A Filter/Regulator With Gauge

- Commonly used for regulating and filtering air supply at workstation
- Polycarbonate bowl fitted with protective cage and automatic drain control
- Supplied with pressure gauge
- Pressure Range: 0-160psi
- 1/4" female NPT ports



DP420325A-1 3/8" Air Line Filter

- Removes particulates and water to extend air tool life
- 5-micron element provides maximum filtration
- 150 PSI maximum Pressure
- 3/8" female NPT ports



DP3278 Spray Gun Filter

- Reduces paint defects by removing the smallest water, oil and dirt particles



DP6038 Pressure Regulator

- Provides regulated output pressure of 0 to 150 PSI for proper tool operation
- Self-relieving design vents downstream air flow for easier adjustment
- Locking pressure knob prevents accidental pressure changes
- 3/8" NPT(F) ports

DPCG-2 In-Line Tool Oiler

- A compact oiler that fastens directly to air tool. Precisely meters proper amount of oil to the tool only when the tool is in use.



DP6025 Mini Pressure Regulator

- 1/4" NPT(F) ports



DP2554 Air Adjusting Valve

- Adjusts air flow of spray gun
- 1/4" NPT(M) inlet x 1/4" NPS(F) outlet
- Infinitely adjustable from 0 to 125 PSI



DP1048 Air Adjusting Valve



2" Pressure Gauge

DPCW-2 In-Line Tool Filter

- A compact and extremely effective accessory for all air-operated shop tools and equipment, such as inflator gauges, impact wrenches, spray guns, airpowered sanders, etc.



Air Line Swivel Fittings

- Eliminates kinked and twisted air line hose by swiveling a full 360°. Use on air lines, tools, and compressor connections to increase flexibility and convenience.

Z-Swivel Connector



DPSW-002



DPSW-002R
With Air Valve



DPSW-002G
With Pressure Gauge

Full Swivel Connector



DPSW-003

- Rubber sleeve protects against dust
- Fit any style design coupler, female, male, hose barb

T-Style Fittings



DPL3T-3C21 3 In1 Air Line Manifold

- Supplies three air tools from one source
- Sturdy aluminum construction
- 3Pcs 1/4"(M) NPT I/M Couplers
- 1/4" (F) NPT Air Inlet



Pipe Coupling and Adapters



Full Port Ball Valves



Barb Type Hose Fittings



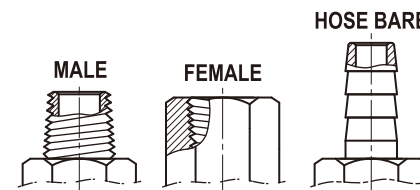
Drain Valve



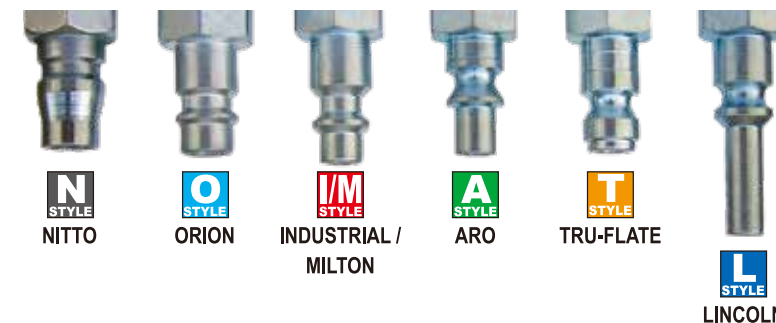
1/4" Compressor Safety Valve



THE BASIC THREAD TYPES



THE BASIC PLUG TYPES



Different plug designs currently are used in the automotive market. Interchangeability of pneumatic couplings is determined by plug design.

Tru-Flate Style Couplers and Plugs



- Popular Body Size: 1/4", 3/8"
- Thread Type: Male, Female, Hose Barb
- Thread Size: 1/4"NPT, 3/8"NPT, 1/4"I.D. Hose Barb, 3/8"I.D. Hose Barb



Industrial/Milton Style Couplers and Plugs



- Popular Body Size: 1/4", 3/8"
- Thread Type: Male, Female, Hose Barb
- Thread Size: 1/4"NPT, 3/8"NPT, 1/4"I.D. Hose Barb, 3/8"I.D. Hose Barb



Lincoln Style Couplers and Plugs



- Popular Body Size: 1/4"
- Thread Type: Male, Female
- Thread Size: 1/4"NPT



ARO Style Couplers and Plugs



- Popular Body Size: 1/4"
- Thread Type: Male, Female, Hose Barb
- Thread Size: 1/4"NPT, 1/4"I.D. Hose Barb,



Nitto Style Couplers and Plugs



- Popular Body Size: 1/4",
- Thread Type: Male, Female,
- Hose Barb, Lock-on Hose
- Thread Size: 1/4"NPT, 3/8"NPT, 1/2"NPT, 1/4" / 3/8" / 5/16" / 1/2"I.D. Hose Barb

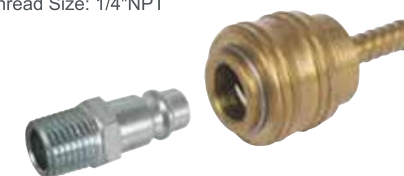


Nitto Style One Touch Couplers

Orion Style Couplers and Plugs



- Popular Body Size: 1/4"
- Thread Type: Male, Female, Hose Barb
- Thread Size: 1/4"NPT





Universal Couplers

- This coupler can be used with Tru-Flate, Industrial/Milton and Aro Design plugs. It eliminates confusion among designs. Quality, deluxe "push to connect" style makes coupling quick and easy. Heavy duty metal construction means longer life. Unique tubular valve construction allows greater air flow



1/4" Universal Safety Coupler

- Universal for Automotive and Industrial Plugs
- Unique two-step safety design reduces air pressure when disconnect coupler & plug also avoids any possible injury to the operator
- 1/4" NPT Male/Female



DP63546 4Pc. High Flow Aluminum Coupler Connector Kit



- Contents:
1-1/4" NPT Female Coupler
2-1/4" NPT Male Plugs
1-1/4" NPT Female Plug

DP07 7PC. Industrial Type 1/4" Coupler and Plug Kit

- Contents:
1-1/4"NPT Female Coupler
1-1/4"NPT Male Coupler
3-1/4"NPT Male Plugs
2-1/4"NPT Female Plugs



DP14 14PC. Industrial Type 1/4" Coupler and Plug Kit

- Contents:
2-1/4"NPT Female Couplers
2-1/4"NPT Male Couplers
6-1/4"NPT Male Plugs
4-1/4"NPT Female Plugs



DP17 17PC. Air Compressor Accessories

- Contents:
1- Air Gauge 1-Air Chuck
1-1/4" NPT (F) Coupler 4- 1/4" NPT (M) Plugs
2- 1/4" NPT (F) Plugs 1- Female Coupling
2- Male Couplings 2- Inflation Nozzles
1- Safety Nozzle 1- Tapered Nozzle
1- Blow Gun



DP20 20PC. Accessory Kit

- Contents:
3-1/4"NPT Male Industrial Plugs
2-1/4"NPT Female Industrial Plug
2-1/4"NPT Female Universal Couplers
1-Dual Air Chck
1-Tire Gauge
1-Air Blow Gun
1-Blow Gun Nozzle
1-Blow Gun Adapter
1-Blow Gun Safety Nozzle
2-Inflation Needles
1-Blow Gun Tapered Nozzle
1-1/4" x 1/4" Male Connector
1-1/4" x 1/4" Female Connector
1-Teflon Tape
1-1/4" x 25ft. Coil Air Hose



DP16 16PC. Accessory Kit

- Contents:
3-1/4"NPT Male Industrial Plugs
1-1/4"NPT Female Industrial Plug
2-1/4"NPT Female Universal Couplers
1-1/4" Inline Ball Valve
1-3600 Swivel Connector
1-3/8" x 1/4"Female Adapter
1-3/8" Male x 1/4" Female Adapter
1-1/4" Female T-Connector
1-1/4" Male Plug
1-1/4" x 1/4" Male Connector
1-1/4" x 1/4" Female Connector
1-Teflon Tape
1-3/8" x 15ft. Coil Air Hose



DPSC003 Foldable Push Cart Dolly

- Everything from the sturdy metal handle for optimal comfort to the textured, non-slip platform, this cart is all about functionality. Engineered using only the highest quality materials, this platform dolly will be a staple item that you can rely on for years to come.
- The four secure, heavy duty wheels offer seamless and reliable transportation for your items and materials. And for sharp angles and getting around corners, the two back wheels are engineered with 360-degree swivel functionality for easy transit.
- The custom support guard ensures items won't slip backwards and arrive safely to where they need to be
- standard size: 28.75"x18.5"x4"



[illegible]

To Be More Powerful
To Be More Valuable

