

# Automated External Defibrillator



ANYTIME, ANYWHERE, ANYONE  
Mediana's HeartOn AED helps to save people's  
lives when Sudden Cardiac Arrest occurs.



# A16

Approx. **200 × 286.5 × 90** mm  
(W×H×D)

Approx. **1.95 kg**

Built-in **3-language**

Manual Power On

Semi-Auto or  
**Fully-Auto**

**RMS Connectable**

**Pacemaker  
Detectable**

**Pads Quality Check  
Available**

A minimum of  
200 shocks

Adult: 170 to 195J (±5%)  
Pediatric: 44 to 51J (±5%)

5 years Battery  
(\*Standby Life)

SD card, IR  
Communication Support



# A15

Approx. 240 × 294 × 95 mm  
(W×H×D)

Approx. 2.5 kg

1-language

Power On  
by opening cover

Semi-Auto

RMS Non-Connectable

Pacemaker  
Non-Detectable

Pads Quality Check Unavailable

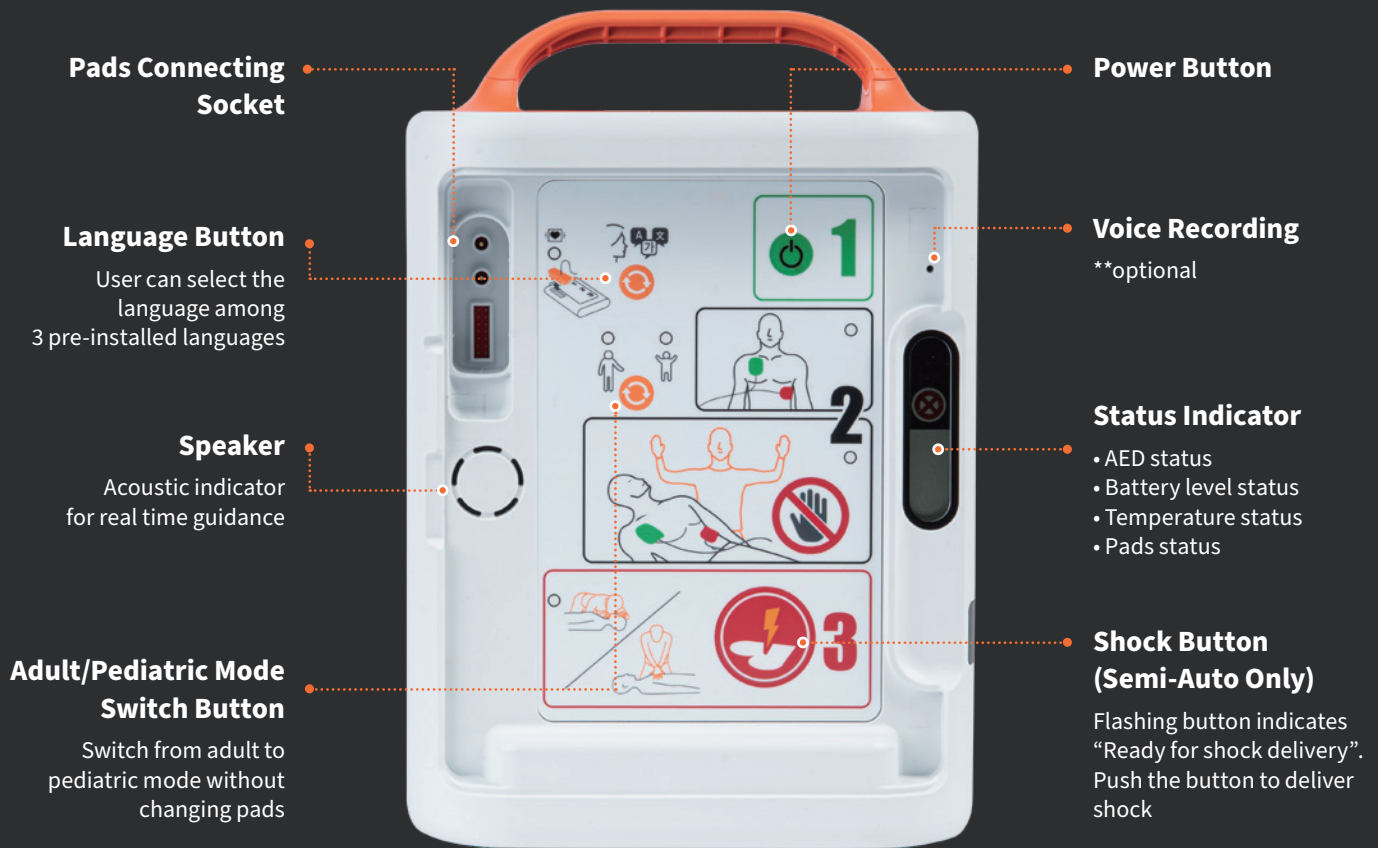
A minimum of  
200 shocks

Adult: 170 to 195J (±5%)  
Pediatric: 44 to 51J (±5%)

5 years Battery  
(\*Standby Life)

SD card, IR  
Communication Support

# A16



## Accessories



Non-Rechargeable  
LiMnO2



Adult/Pediatric Pads



Operator's Manual



CPR Feedback  
\*\*optional



Soft bag  
\*\*optional








## Trainer T16

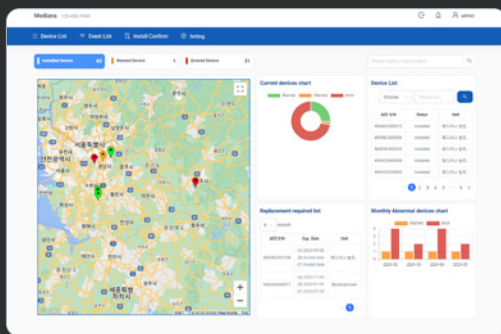
- Providing education on the use of the correct automatic defibrillator with the same operation method as the real situation.
- Pre-configured with 10 standard scenarios that simulate realistic sudden cardiac arrest episodes and 3 custom scenarios which can be changed by user.
- Simultaneous LED display and voice
- Rechargeable Battery Saving Maintenance cost



# AED RMS

The All-in-One Control and Monitoring Server for AEDs enables efficient device management via the Remote Management System (RMS).

-  Periodic Status Monitoring
-  Easy-to-use Dashboard
-  Automatic Notifications (SMS)
-  Wi-Fi Network Communication
-  Overall AED Status Management  
(AED Operation/Battery/Temperature Status,  
Pad Expiration Date, History of AED Usage)



<Web Viewer>

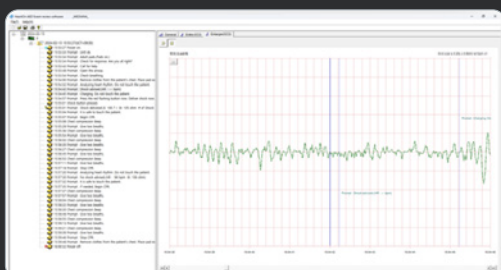
## Modulation Specifications

Modulation Type	Bandwidth (MHz)	ERP (mW)	ERP (dbm)	EIS (dbm)
DSSS	20	32	15	-93
OFDM	20	32	15	-89

## Wi-Fi Specifications

IEEE Protocol	802.11b/g/n
Bandwidth	2.4GHz(2412~2472MHz)
Maximum Transmission Speed	Up to 72.2Mbps - 802.11n(2.4GHz)
Packet Aggregation	A-MPDU: TX/RX A-MSDU: RX
Support Security	1. WPA-PSK 2. WPA2-PSK(Recommendation) 3. WPA-PSK / WPA2-PSK
Distance	Indoor installation 20m~30m (depending on the installation environment.)

# Event Review Software



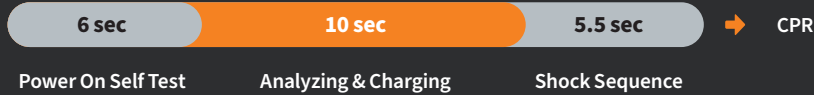
The Event Review Software enables data analysis and provides a detailed list-format review, similar to an observation log, including time-specific equipment and patient status.

# Reduction of the Defibrillation time

**Before**



**After**



## A16 Language Group

Group 2	Korean, English, Chinese(Mandarin)	Group 26	English, India, Korean
Group 3	Italian, French, German	Group 27	Chinese(Mandarin), Taiwanese, English
Group 4	Spanish, Portuguese, English	Group 28	Slovenian, English, Spanish
Group 5	Dutch, French, English	Group 29	French, English, Spanish
Group 6	German, Danish, Greek	Group 30	French, English, German
Group 7	Swedish, Norwegian, Finnish	Group 31	German, Turkish, English
Group 14	Estonian, Russian, English	Group 32	French, English, Italian
Group 15	Russian, Ukrainian, English	Group 33	Chinese(Mandarin), French, English
Group 16	Russian, English, French	Group 34	English, Welsh, Polish
Group 17	French, Arabic, English	Group 35	Norwegian, English, German
Group 18	Turkish, English, Arabic	Group 36	Lithuanian, English, Russian
Group 19	Polish, English, Russian	Group 37	Swedish, English, Finnish
Group 20	Hungarian, German, English	Group 38	Norwegian, English, Polish
Group 21	Romanian, English, Hungarian	Group 39	Norwegian, English, Swedish
Group 22	Greek, English, German	Group 40	German, English, Spanish
Group 23	Danish, German, English	Group 41	Russian, English, Greek
Group 24	Dutch, French, German	Group 42	Czech, English, Slovak
Group 25	Thai, English, Korean	Group 43	Greek, English, Chinese(Mandarin)

\*\*User can select the first language among given language groups.

\*\*Given language groups are accurate as of January 2025 and may be subject to change.



**R&D Office:** 132, Donghwagongdan-ro, Munmak-eup, Wonju-si, Gangwon-do, Korea

**Seoul Office:** 53, Donggwang-ro, Seocho-gu, Seoul, Korea

**TEL:** +82-033-742-5400

**FAX:** +82-033-752-5483

**E-mail:** [info@mediana.co.kr](mailto:info@mediana.co.kr)

**[www.mediana-global.com](http://www.mediana-global.com)**

Copyright © 2025 MEDIANA CO., LTD. All rights reserved. MDG – AE2502-01(00)

Health Canada License Number: 113143

