



\$ FOREST GREEN



\$ HARTFORD GREEN



▲★\$ MILITARY BLUE



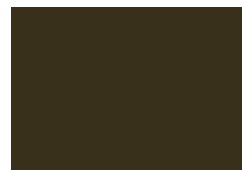
\$ BERKSHIRE BLUE



▲★\$ SLATE BLUE



\$ AWARD BLUE



▲\$ AGED BRONZE



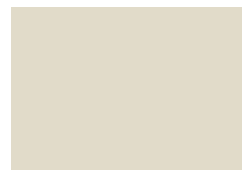
▲★\$ MEDIUM BRONZE



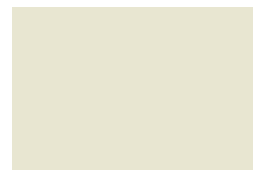
▲★\$ CARDINAL RED



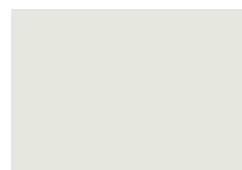
▲★\$ COLONIAL RED



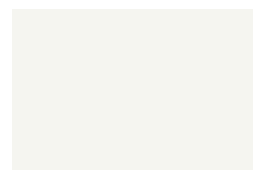
▲★\$ SANDSTONE



▲★\$ ALMOND



▲★\$ STONE WHITE

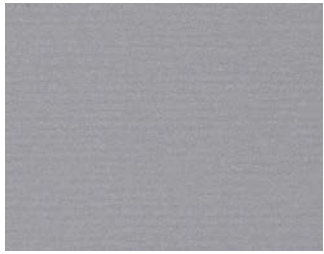


▲★\$ BONE WHITE

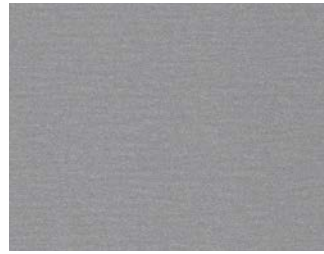
Color Guide

PAC-CLAD.COM

Premium Colors



●▲★\$ ANODIC CLEAR



●▲★\$ SILVERSMITH



●▲★\$ SILVER



●▲★\$ CHAMPAGNE



●▲★\$ ZINC



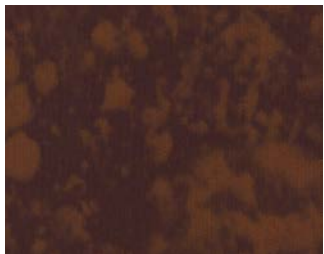
●▲★\$ WEATHERED ZINC



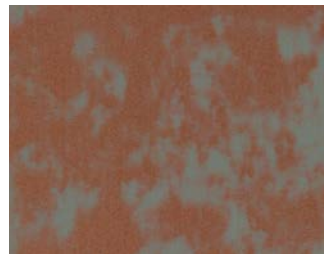
●▲★\$ COPPER PENNY



●▲★\$ AGED COPPER



●▲★\$ WEATHERED STEEL



●▲★\$ WEATHERED COPPER

Kynar 500® or Hylar 5000® pre-finished steel and aluminum for roofing, curtainwall and storefront applications.



- Metallic Colors
- ★ ENERGY STAR® Colors
- \$ Pricing
- ▲ Cool Colors
- 👑 Premium Colors

See back for color availability chart.

Standard Colors



▲★\$ PATINA GREEN



▲★\$ TEAL



▲★\$ HEMLOCK GREEN



\$ FOREST GREEN



\$ HARTFORD GREEN



▲★\$ EVERGREEN



▲★\$ HUNTER GREEN



▲★\$ ARCADIA GREEN



▲★\$ MILITARY BLUE



\$ BERKSHIRE BLUE



▲\$ GRAPHITE



▲★\$ CHARCOAL



\$ INTERSTATE BLUE



▲★\$ SLATE BLUE



\$ AWARD BLUE



\$ MATTE BLACK



▲★\$ DARK BRONZE



▲\$ BURNISHED SLATE



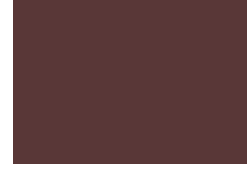
▲\$ AGED BRONZE



▲★\$ MEDIUM BRONZE



▲★\$ MANSARD BROWN



\$ BURGUNDY



▲★\$ TERRA COTTA



▲★\$ CARDINAL RED



▲★\$ COLONIAL RED



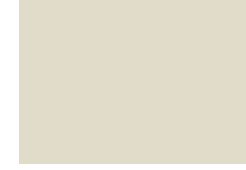
\$ MIDNIGHT BRONZE



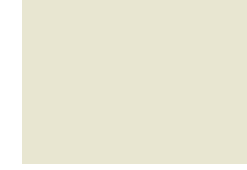
▲★\$ MUSKET GRAY



▲★\$ SIERRA TAN



▲★\$ SANDSTONE



▲★\$ ALMOND



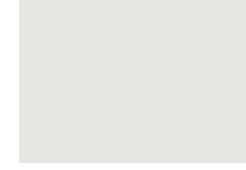
▲★\$ SLATE GRAY



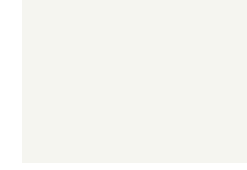
▲★\$ CITYSCAPE



▲★\$ GRANITE



▲★\$ STONE WHITE



▲★\$ BONE WHITE



PAC-CLAD
P E T E R S E N

HQ: 800 PAC CLAD TX: 800 441 8661 MD: 800 344 1400
AZ: 833 750 1935 GA: 800 272 4482 MN: 877 571 2025

PAC-CLAD.COM

PAC-CLAD® Color Availability

PAC-CLAD STANDARD COLORS	REFLECTIVITY	EMISSION	3 YEAR EXPOSURE	SRI	STEEL		ALUMINUM				ENERGY STAR	
					24 GA.	22 GA.	.032	.040	.050	.063		
AGED BRONZE	0.28	0.86	N/A	27	✓							
ALMOND	0.53	0.87	0.52	62	✓	✓	✓	✓	✓			★
ARCADIA GREEN	0.30	0.88	0.30	31	✓		✓					★
AWARD BLUE	0.21	0.86	0.20	18	✓		✓		✓			
BERKSHIRE BLUE*	0.26	0.87	0.25	25	✓							
BLACK ALUMINUM**	0.20	0.86	0.19	17			✓	✓	✓	✓		
MATTE BLACK STEEL**	0.23	0.87	0.22	21	✓	✓						
BONE WHITE	0.65	0.86	0.64	78	✓	✓	✓	✓	✓	✓		★
BURGUNDY	0.23	0.87	0.22	21	✓		✓		✓			
BURNISHED SLATE	0.29	0.85	N/A	28	✓							
CARDINAL RED	0.36	0.86	0.36	38	✓		✓		✓			★
CHARCOAL	0.26	0.87	0.26	25	✓		✓		✓			★
CITYSCAPE	0.43	0.87	0.43	48	✓	✓	✓	✓	✓			★
COLONIAL RED	0.32	0.88	0.32	34	✓		✓	✓	✓			★
DARK BRONZE	0.26	0.88	0.26	26	✓	✓	✓	✓	✓	✓		★
EVERGREEN	0.25	0.86	0.23	24	✓		✓					★
FOREST GREEN	0.10	0.87	0.10	5	✓	✓	✓	✓	✓			
GRANITE*	0.36	0.87	0.36	39	✓	✓	✓	✓	✓			★
GRAPHITE	0.27	0.86	N/A	26	✓							
HARTFORD GREEN	0.09	0.88	0.09	4	✓		✓	✓	✓			
HEMLOCK GREEN	0.30	0.85	0.31	30	✓		✓		✓			★
HUNTER GREEN	0.26	0.86	0.25	25	✓		✓					★
INTERSTATE BLUE	0.13	0.87	0.12	8	✓		✓		✓			
MANSARD BROWN	0.28	0.85	0.28	27	✓	✓	✓	✓	✓			★
MEDIUM BRONZE	0.25	0.88	0.24	24	✓	✓	✓	✓	✓	✓		★
MIDNIGHT BRONZE	0.06	0.88	N/A	0	✓			✓				
MILITARY BLUE	0.29	0.87	0.28	30	✓		✓					★
MUSKET GRAY	0.28	0.87	0.27	28	✓	✓	✓		✓			★
PATINA GREEN	0.34	0.86	0.33	35	✓		✓					★
SANDSTONE	0.46	0.87	0.46	52	✓	✓	✓	✓	✓	✓		★
SIERRA TAN	0.31	0.87	0.31	32	✓	✓	✓	✓	✓			★
SLATE BLUE	0.23	0.87	0.22	21	✓		✓					★
SLATE GRAY	0.35	0.88	0.34	38	✓	✓	✓	✓	✓			★
STONE WHITE	0.67	0.85	0.65	80	✓	✓	✓	✓	✓	✓		★
TEAL	0.26	0.87	0.26	25	✓		✓					★
TERRA COTTA	0.36	0.88	0.35	39	✓		✓		✓			★
PAC-CLAD PREMIUM COLORS												
AGED COPPER	0.25	0.87	0.24	24	✓		✓		✓			★
ANODIC CLEAR	0.55	0.80	N/A	62				✓				
CHAMPAGNE	0.40	0.82	0.36	42	✓		✓	✓	✓			★
COPPER PENNY	0.45	0.87	0.44	51	✓		✓	✓	✓			★
SILVER	0.48	0.81	0.46	53	✓	✓	✓	✓	✓			★
SILVERSMITH	0.52	0.81	N/A	58				✓				
WEATHERED COPPER	0.45	0.88	N/A	51	✓							
WEATHERED STEEL	0.32	0.89	N/A	34	✓							
WEATHERED ZINC	0.25	0.82	0.24	22	✓	✓	✓		✓			★
ZINC	0.30	0.88	0.29	31	✓		✓	✓	✓			★
CLEAR-COAT ACRYLIC FINISH (NON-KYNAR)												
GALVALUME PLUS	0.68	0.14	0.55	57	✓	✓						★

PAC-CLAD Premium finishes are available from stock at a moderate extra cost. PAC-CLAD Copper Penny is a Non-Weathering finish. Solar Reflectance Index calculated according to ASTM E-1980.

*Low Gloss/Low Sheen, 70% PVDF finish ** Appearance differs for Black Aluminum and Matte Black Steel

ENERGY STAR PERFORMANCE CRITERIA:

Emissivity uses ASTM C1371 Reflectivity uses ASTM C1549.

TECHNICAL DATA FOR KYNAR 500/HYLAR 5000 COATING:

- ▶ South Florida Exposure: Color (ASTM D 2244) - No more than 5ΔE Hunter units at 20 years; Chalk (ASTM D 4214) - Rating no less than 8 at 20 years; Film integrity - 20 years.
- ▶ Accelerated Weathering (ASTM D 4587, ASTM G 154): 5000 Hours; Chalk, per ASTM D 4214, rating of 6 or better; Color, per ASTM D 2244, < 5ΔE (Hunter Units) color change.

- ▶ Humidity Resistance (ASTM D 2247): Galvalume or HDG, 100% RH, 2000 hours - No field blisters; Aluminum, 100% RH, 3000 hours - No field blisters
- ▶ Salt Spray Resistance (ASTM B 117): Aluminum, 3000 hours, Galvalume or HDG, 1000 hours - Creep from scribe no more than 1/16", no field blisters
- ▶ Chemical/Acid Pollution Resistance (ASTM D 1308): Pass
- ▶ T-Bend (ASTM D 4145): 1T - 3T with no loss of adhesion
- ▶ Pencil hardness (ASTM D 3363): HB - 2H
- ▶ Specular Gloss (ASTM D 523) @ 60 degrees: Typical - 20 - 35

- ▶ Abrasion Resistance (ASTM D 968): 67 +/- 10 liters
- ▶ Cross Hatch Adhesion (ASTM D 3359): No loss of adhesion
- ▶ Reverse Impact (ASTM D 2794): Galvalume or HDG, 2x metal thickness inch-pounds, no loss of adhesion; Aluminum, 1.5x metal thickness inch-pounds, no loss of adhesion
- ▶ Flame Test (ASTM E 84): Class A Coating