

## Case Study – Cromwell College Extension



### CLIENT



### PRINCIPAL CONTRACTOR

**MORGAN  
SINDALL**

### KEY BENEFITS



Design and Build Solution



Reduced programme



Innovative install secured works



Excellent relationships



High quality install

Cromwell Community College in Chatteris, Cambridgeshire has a £14.6 million expansion which created new classrooms, sports pitches and a new pre-school. Granite were appointed by Morgan Sindall to install the new 11kV cabling, associated civils and switchgear from concept to commissioning. The switchroom brick building was built by Morgan Sindall and they acted as Principal Contractor for the new utilities connection in 2019.

From contract agreement to commissioning Granite was able to achieve the challenging programme with close collaboration with the Independent Distribution Network Operator within 6 months.

The planning of access with stakeholder engagement of the traffic management was made easier with regular meeting and a collaborative approach to fitting around the local community and partially occupied College..

*Jane Horn, College Principal, said: "It's been an incredibly exciting time for us at the college with the work on our new pre-school and primary phase offer".*

*"By expanding our provisions, we will become*

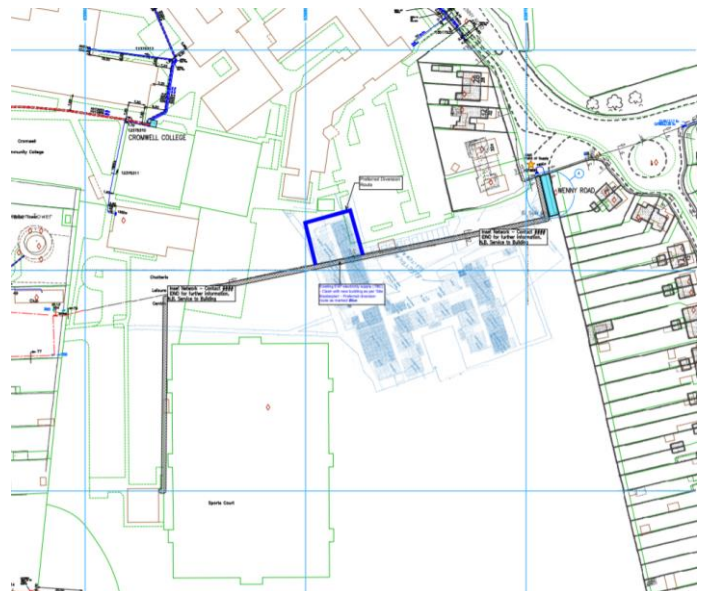


*the first educational establishment in Cambridgeshire to provide education from four to 18 years old.*

*"Thank you to Morgan Sindall Construction and the team for leading the build and we are excited to see the new facilities come to fruition."*



From the outset our site teams experience in design and build project delivery was utilised and we introduced innovative installation methods which contributed to the security of the main construction programme.



This included Granite changing the 11kV cable route to allow excavation progress around planned foundations for the new college building, which reduced the programme while allowing partial use of the college which gained them additional revenue.

Equipment specifications where challenged by Granite as worked closely with the IDNO to adopt the asset was able to reduce costs and reduce delivery time of the long lead electrical equipment.



The reduction of previously allocated programme durations allowed both Morgan Sindall and Cromwell College to reduce risk in the programme and focus on other works to improve the overall project delivery.