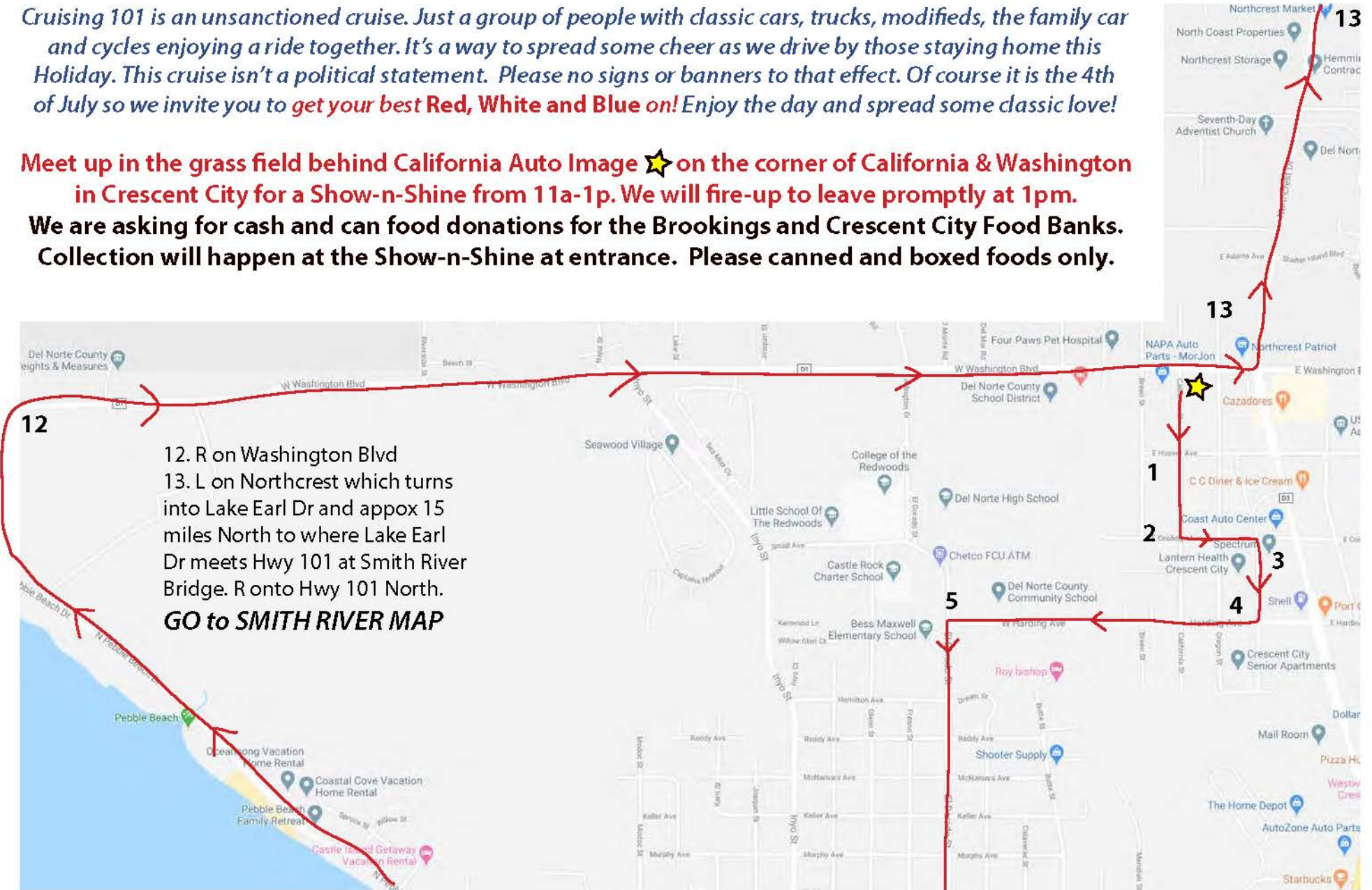


Cruising 101 is an unsanctioned cruise. Just a group of people with classic cars, trucks, modifieds, the family car and cycles enjoying a ride together. It's a way to spread some cheer as we drive by those staying home this Holiday. This cruise isn't a political statement. Please no signs or banners to that effect. Of course it is the 4th of July so we invite you to **get your best Red, White and Blue on!** Enjoy the day and spread some classic love!

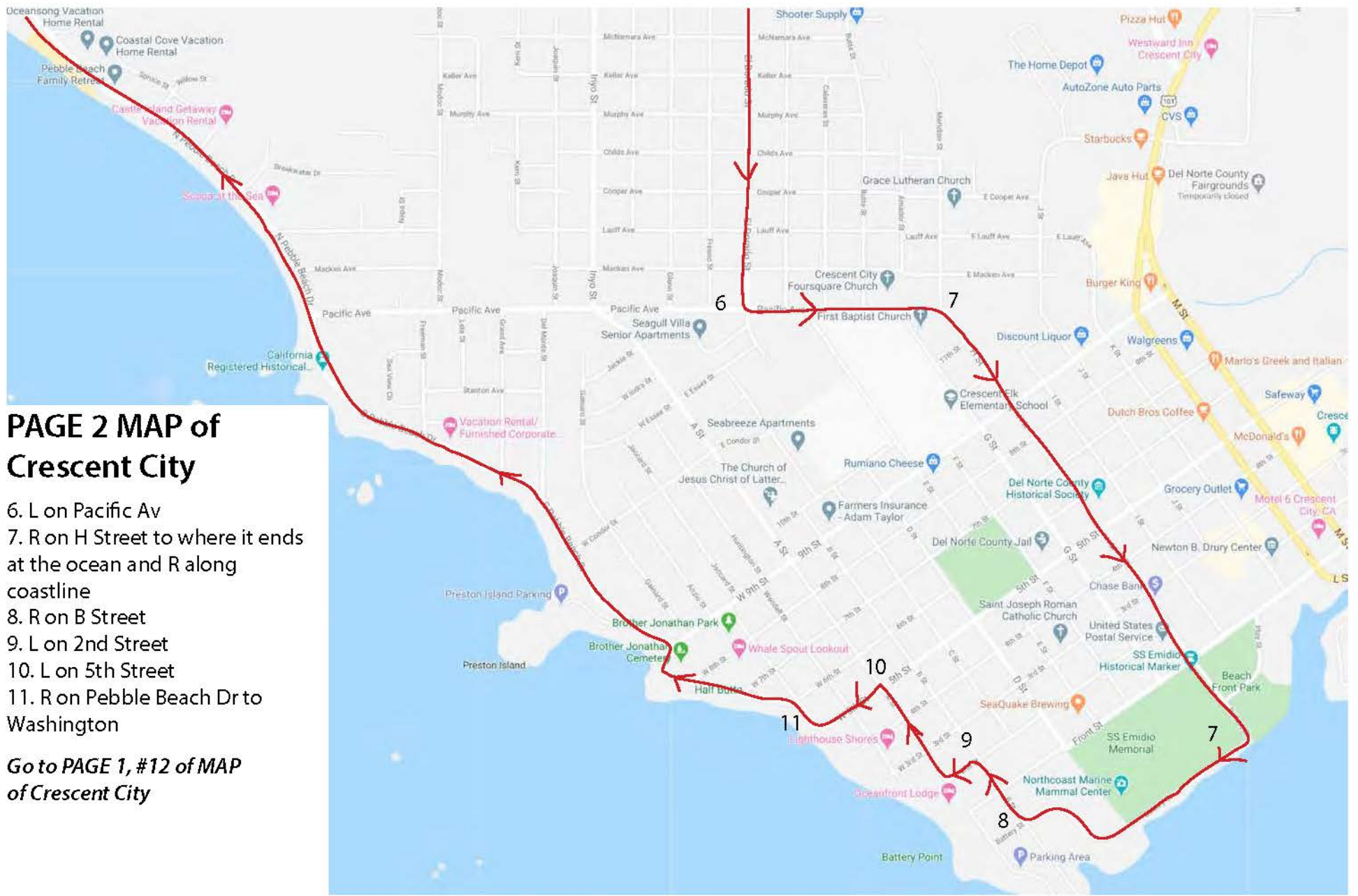
Meet up in the grass field behind California Auto Image ⭐ on the corner of California & Washington in Crescent City for a Show-n-Shine from 11a-1p. We will fire-up to leave promptly at 1pm. We are asking for cash and can food donations for the Brookings and Crescent City Food Banks. Collection will happen at the Show-n-Shine at entrance. Please canned and boxed foods only.



PAGE 1 Map of Crescent City

1. South down California St
2. L on Coolidge Av
3. R on Marshall St
4. R on Harding Ave
5. L on El Dorado St

Go to PAGE 2 MAP of Crescent City

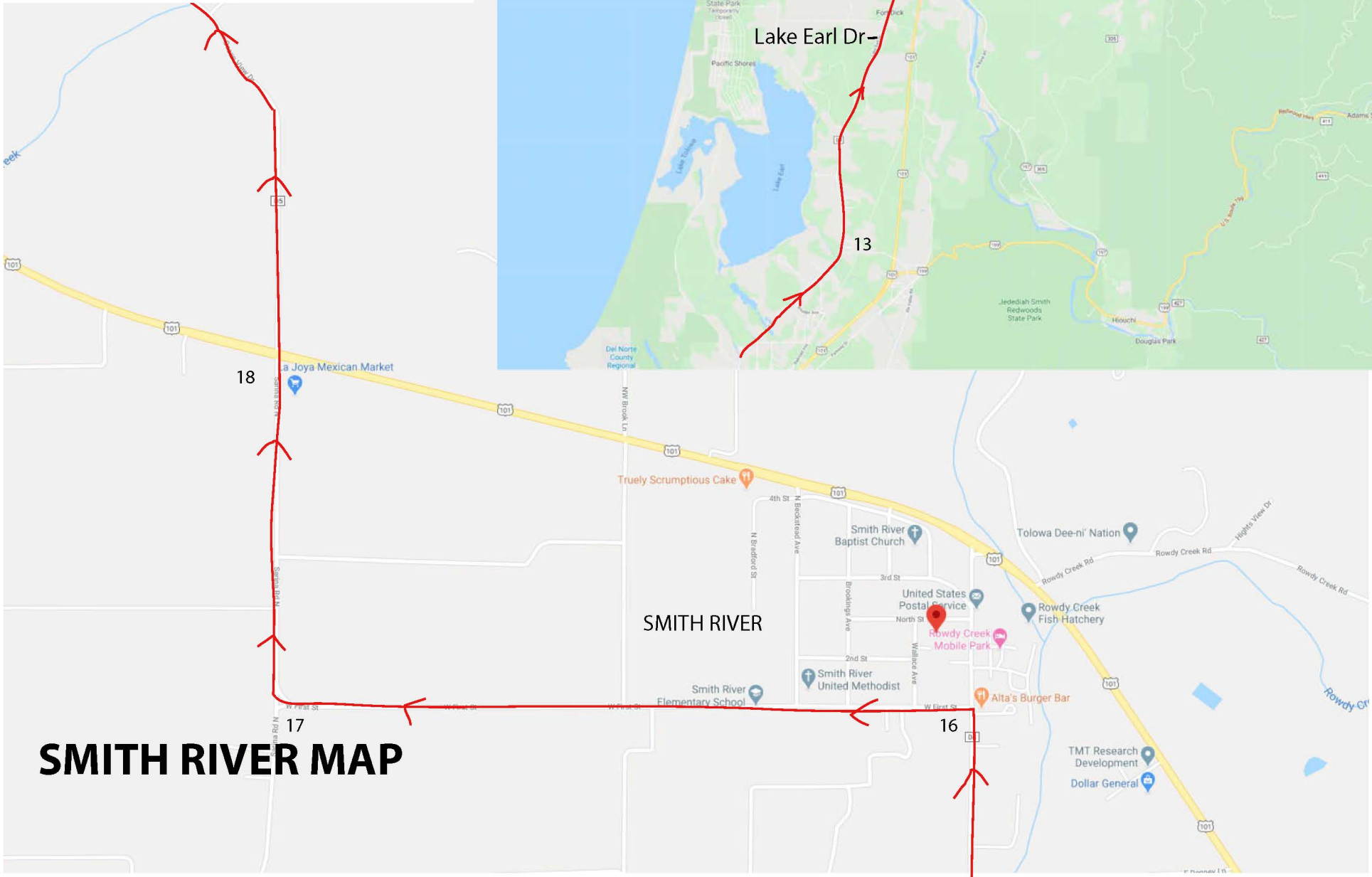


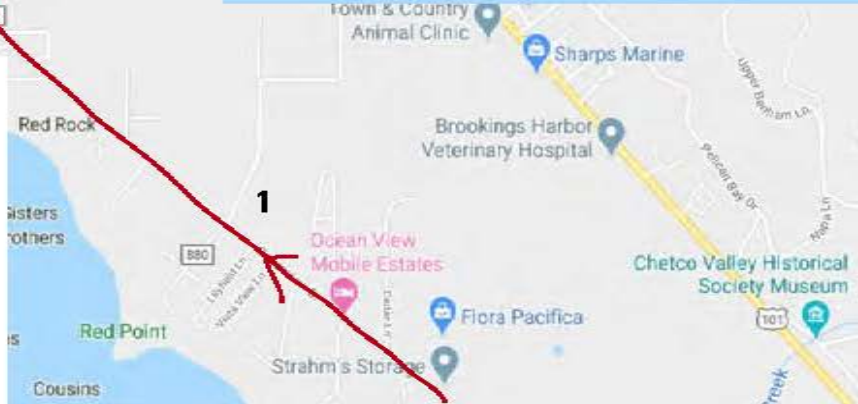
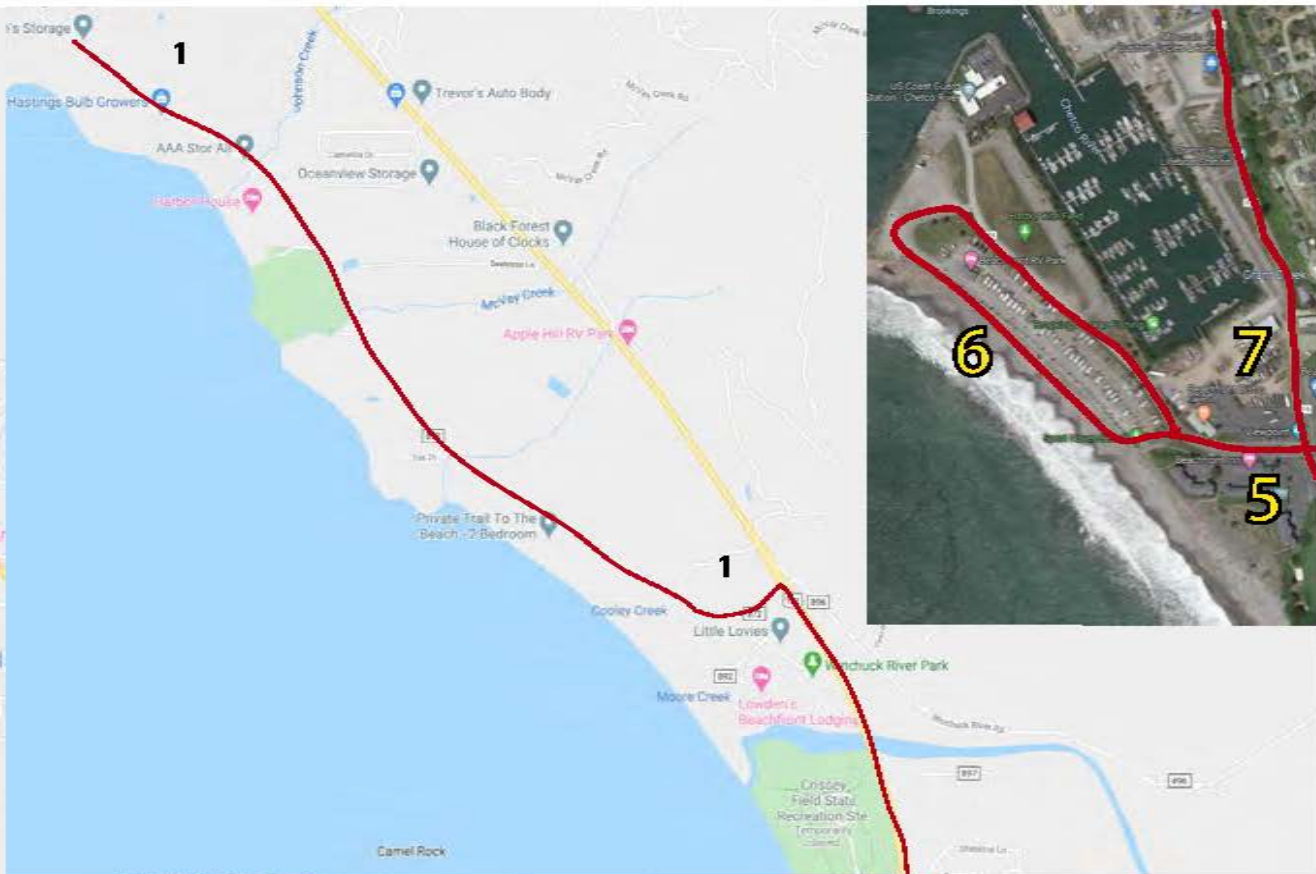
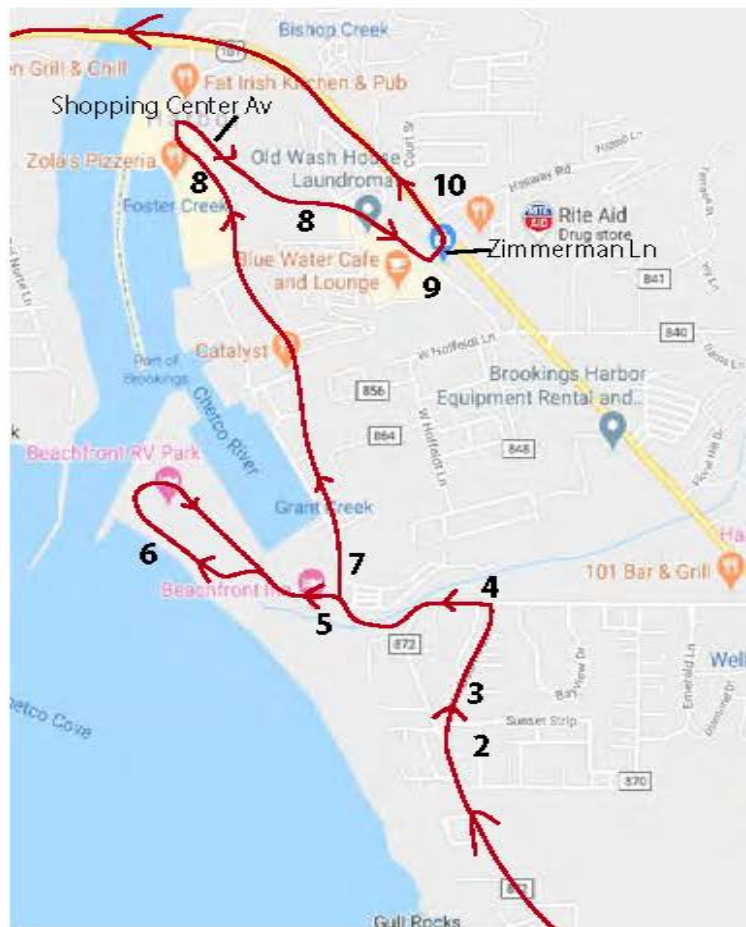
PAGE 2 MAP of Crescent City

- 6. L on Pacific Av
- 7. R on H Street to where it ends at the ocean and R along coastline
- 8. R on B Street
- 9. L on 2nd Street
- 10. L on 5th Street
- 11. R on Pebble Beach Dr to Washington

Go to PAGE 1, #12 of MAP of Crescent City

- 13. Lake Earl makes jog to right to meet up with Hwy 101
- 14. L on to Hwy 101 North over Smith River Bridge
- 15. L on Fred Height
- 16. L on 1st Street
- 17. R at intersection on Sarina Rd
- 18. Cross over Hwy 101 on to Oceanview. Follow Oceanview until it reconnects with Hwy 101 just short of California Oregon border (approx 5 miles). Turn R onto Hwy 101 North





Page 1 of Brookings Map

1. L on Oceanview (approx 1 mile North of Crissy Field). At printing, Crissy Field is closed to public.
2. Up Oceanview approx 3 miles to Wenbourne Dr
3. R on Wenbourne Dr
4. L on Benham Ln towards the ocean
5. L on Boat Basin Rd
6. L into Sporthaven Beach area. **Do not drive in RV park. Stay on the ocean side of RV park. Make the loop back to where you came in at in front of Beachfront Hotel**
- DRIVE VERY SLOW!**
7. L on Lower Harbor Rd

8. Lower Harbor Rd to Shopping Center Av-Fat Irish is located on the corner. (SHARP Right up the hill)
9. L on Zimmerman to stoplight intersection at Hwy 101
10. L onto Hwy 101 North over Chetco River Bridge.

Go to Page 2 of Brookings Map

Page 2 of Brookings Map

- 11. R on Oak St (2nd light after bridge)
- 12. R on Pacific, L on Pioneer to Easy St, L on Easy St
- 13. L on 5th St, continue through intersection to Railroad St
- 14. L on Railroad St
- 15. R on Memory Ln
- 16. Memory Ln turns into Del Norte Ln
- 17. Del Norte Ln turns into Railroad St and in a few blocks intersects with Oak St
- 18. R on Oak St to intersection of Hwy 101
- 19. L on Hwy 101 up to Church of the Nazarene to end cruise

