

Planning Yass Valley Inc.

A non-profit Association seeking a better planning outcome for residents and ratepayers in Yass Valley.
planningyassvalley@gmail.com, ccepl.com.au

Preparation notes for the Yass Valley Council's Towards 2042 Forum on 5 August 2021

Topic: Community Strategic Plan

Introduction

Yass Valley Council has invited selected community groups to provide input at a forum on 5 August 2021 to a non-existent document called the **Community Strategic Plan**.

A survey was sent out inviting the selected groups to tell the Yass Valley Council what a great job the Councillors have been doing.

This document outlines why the Forum and the survey are unlikely to achieve any beneficial changes because the process of planning for Yass Valley is fundamentally flawed.

Flawed Planning Process

The major deficiencies in the planning process are:

- Only selected community groups were invited to provide an input although all Council planning strategies affect all ratepayers who should have been asked for input.
- There is no Yass Valley "Community Strategic Plan", document, only a multi local government area document called the **Tablelands Regional Community Strategic Plan** that is jointly produced by the Yass Valley, Upper Lachlan and Goulburn Local Government Areas (LGA) (see figure 1).

All planning documents in NSW are based on a hierarchy of documents as shown in **Figure 2**. The **Tablelands and Regional Community Strategic Plan** is at the bottom of the list and is required to be compatible with the planning in higher documents.

The Yass Valley Settlement Strategy 2036, a visionless document, is a derivative of the **Tablelands and Regional Community Strategic Plan**.

It is not surprising that the **Yass Valley Settlement Strategy** is flawed if the parent document to the **Yass Valley Settlement Strategy 2036** is also flawed,.

The Forum today

According to the agenda, the forum is being managed by a private contractor called Projectura. A council

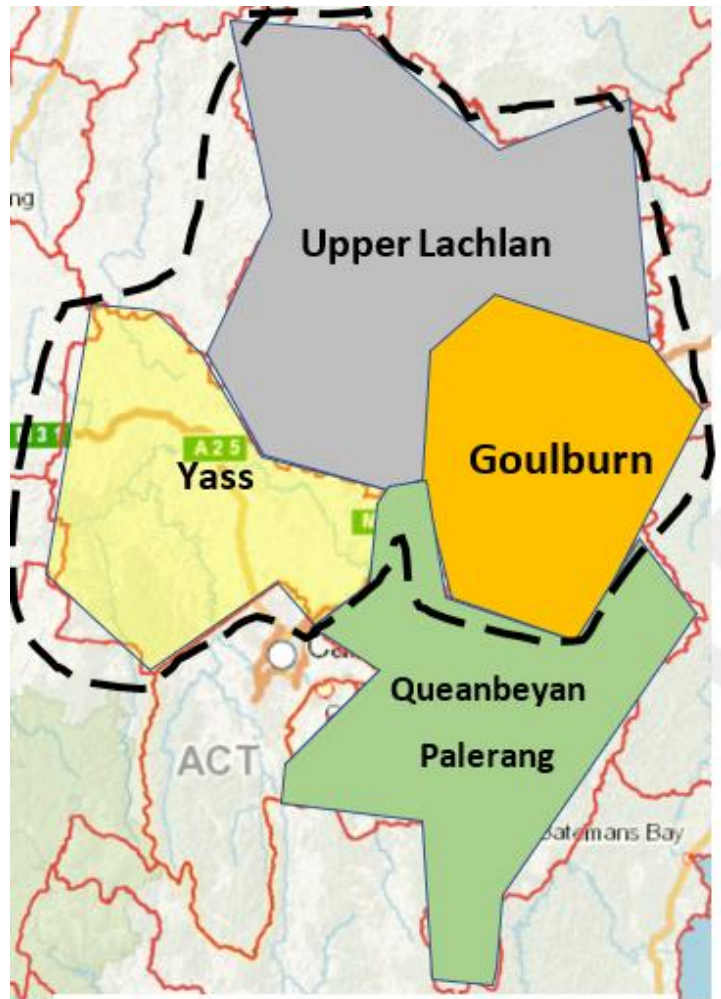


Figure 1: Tablelands Regional Community LGAs

representative will be giving the welcome address to those attending the forum. There is no mention of Councillors attending the Forum to listen to ratepayer concerns and recommendations.

The Forum agenda was not sent in draft form for the ratepayers to amend as they think would best suit them. The agenda is designed to constrain the discussion to basically give the Councillors a pat on the back.

For example, Activity 2 is to discuss "Where are we now" that includes "What makes your community a great place to live? The question should have been what is wrong with the way the Yass Valley is being planned and managed?"

Planning Yass Valley Inc.

A non-profit Association seeking a better planning outcome for residents and ratepayers in Yass Valley.

planningyassvalley@gmail.com, ccepl.com.au

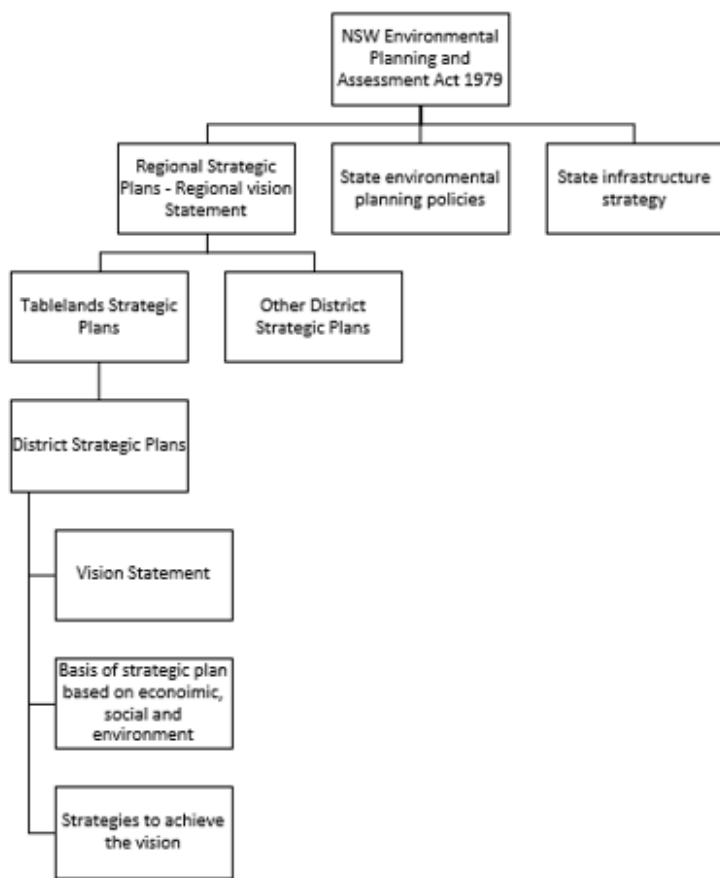


Figure 2: Hierarchy of NSW Planning documents

There is no opportunity to discuss why Yass Valley Council has produced two fundamentally flawed strategy documents, the Yass Valley Settlement Strategy 2036 and the Tablelands Regional Community Strategic Plan 2016-2036.

The fundamental flaw in the planning process is the “view” taken by Yass Valley Council that is based on the partnership between Yass Valley and the Upper Lachlan and Goulburn Local Government Areas (see Figure 1).

The following questions need to be answered at the Forum today:

1. Who is taking minutes?

Minutes need to be taken and agreed upon by all present.

2. Will the minutes be published on the Council website?

The minutes need to be made available to all ratepayers.

3. Will a media representative be present?

if not why?

4. What document are we working on at the Forum?

We need to be working on a document. Is this forum a friendly waste of time chit-chat or is it an attempt to produce a proper vision for the area?

We need to be working on a document, not just having a jolly chit chat that the Councillors don't have time to listen to.

5. Where on the Yass Valley website is the Yass Valley Vision statement?

There was one on the website, it is now gone.

6. Why are all Councillors not present?

Are they not interested in the opinions of the ratepayers that they are supposed to represent?

7. Why weren't all ratepayers contacted to provide an input to the community strategic planning process?

If you can find every ratepayer to send the rates notice to you can find them to invite their input to the planning for the next 20 years.

8. Which community groups were invited to provide input to the community strategic planning process?

Why were only these groups contacted?

An individual farmer's views are just as important as the local knitting club.

9. What is the current vision for Yass Valley?

Planning Yass Valley Inc.

A non-profit Association seeking a better planning outcome for residents and ratepayers in Yass Valley.

planningyassvalley@gmail.com, ccepl.com.au

The Tablelands and Community Strategic Plan 2016 -2036 does not contain a vision for Yass Valley.

10. Why is Yass Valley grouped with Upper Lachlan and Goulburn to produce a vision?

What does Yass Valley have in common with the Upper Lachlan and Goulburn LGAs?

Yass Valley LGA doesn't even share a common border with Goulburn LGA.

Why isn't Yass Valley working with Queanbeyan Palerang that shares the same issues due to the presence of the largest source of employment and services outside of Sydney.

11. What is the biggest planning issue in Yass Valley?

Is it the lack of a vision for Yass Valley that takes into account the presence of Canberra?

12. What is the biggest development that has been approved by Yass Valley Council?

13. What similar size developments been approved by Upper Lachlan or Goulburn Councils?

14. Who decides what partner LGAs Yass Valley has to work with to produce a regional plan?

15. Where are the Tablelands regional planning meetings held?

16. What are the results of the review of the KPIs listed in the Tablelands Regional Community Strategic Plan?

We should see how the old one is working before throwing it away and producing a new one.

17. What evidence is there that the ACT Government regards the region as part of Canberra as stated in the Tablelands Regional Community Strategic Plan?

18. How is EC1 being satisfied?

Where is the plan for growth closer to where the growth is needed – near Canberra.

19. Will a lack of planning that takes into account the realities of being next to Canberra result in more

OUR ECONOMY Strategy EC1

Capitalise on the region's close proximity to Canberra and its position as a convenient location to attract industry and investment.

What may the Councils' role be?

- To develop and foster partnerships with the ACT Government to ensure the region is adequately considered as part of Canberra's growth and planning strategies.
- To support and encourage the ongoing maintenance and improvement of road networks and rail links between the region and other centres such as Sydney, Canberra, and Melbourne.
- To ensure adequate and appropriate land is zoned for business and industrial purposes.
- To promote the region as an ideal location for businesses and industry associated with Canberra airport.

Areas of potential focus and key issues to consider:

- Growth will need to be managed to ensure benefits and services are not lost from the region.
- Councils, through their planning instruments and strategies, should ensure growth does not compromise the unique rural character of the region or important environmental and historical elements. Appropriate siting, with community input, is fundamental.
- Yass Valley LGA is most likely to be impacted by growth.
- The development of an Economic Development Strategy for the region.
- Opportunities associated with major infrastructure developments within the region.

How will we know we are successful? (KPIs)

- Number of businesses and industry within the region.

undesirable developments such as the Parkwood housing estate?

20. Does the Parkwood housing estate protect the values that are supposed to be protected according to the Tablelands and Community Strategic Plan 2016 -2036?