



COMMERCIAL SYSTEMS

About Us

In our U.K. based factory we manufacture Europe's market leading aluminium systems including the best bi-folding doors, sliding doors, windows and roofing products and are available for delivery and installation nationwide. We are perfectly suited to service the trade as well as consumer markets.

Our specialist products and industry expertise make us the perfect supplier for window and door companies, architects, builders and developers of residential developments on any scale. We want to work in partnership with you and your business to form a successful alliance that leads to stunning completed projects and happy customers and homeowners.



Thermal Commercial Door System

Inherently strong and efficient the thermal commercial door exceeds the current building regulations requirements. Favoured by Architects and Specifiers for the flexibility of design.

Ground Floor Treatment and Commercial Door System

A welcoming entrance can provide a positive first impression for visitors. In a high-traffic commercial environment, our stylish ground floor treatments will immediately impress and can help to achieve a modern look.

Thermal Rebate Door System

The Rebated Door Suite is a thermally broken system, to ensure that it can meet and exceed current building regulations. This system uses high quality components, from throughout Europe, to ensure the products durability.

Thermal Framing System

Designed to meet the needs of new build and refurbishment projects in the education sector. Suitable for use across the full public sector spectrum as well as on commercial projects, ideal for display windows in the retail sector.



Curtain Walling System

Curtain Walling systems offer an extensive range of solutions for fire stop, smoke stop and sound barrier requirements in all architectural cladding panel applications.

THERMAL COMMERCIAL DOOR SYSTEM



A thermally efficient product designed for installation in schools, offices and commercial buildings where enhanced building regulations and security standards are required. This fully compliant Thermal Commercial Pivot Door is designed for high traffic footfall and tested to PAS24 security standards.

The DDA compliant door system is compatible with the Thermal Framing and Window Systems providing commonality of design and an all-in-one solution.

Slimline profiles minimise sight-lines whilst ensuring excellent thermal performance all year round.

PAS24 Configurations

- Single and double door
- Single door access control
- Single door panic hardware

Design Options

- Single and dual colour
- Double and triple glazing
- Manual pivot door
- Automatic pivot or sliding door
- Single or multipoint lock
- Range of DDA compliant thresholds
- Anti-finger-trap stile



TECHNICAL SPECIFICATION

Application	Commercial, new build and refurbishment.	
	Single Door	Double Door
Maximum width	1100mm	2200mm
Maximum height	2500mm	2500mm
Jointing	Mechanical	Mechanical
Internally beaded option	Yes	Yes
Glazing options	Will accept insulating glass units and infill panels 28 – 47mm thick.	
Finishes	Mill finish. Etched and anodised Silver AA25 or colours on request. Polyester powder coat paint. See separate list for standard colour range available.	
Single or dual colour profiles	Option	
Design standards	BS EN 12020-2:2001 Aluminium and aluminium alloys, extruded precision profiles. BS 3987:1991 Specification for anodic oxide coatings. BS EN 12206-1:2021 Paints and varnishes, coating of aluminium and aluminium alloys. BS 4873:2016 Specification for aluminium alloy windows and doorsets. BS EN 14351-1:2006+A2:2016 Windows and doors, performance characteristics. BS EN ISO 10077-2:2017 Thermal performance of windows, doors and shutters. PAS 24:2016 Enhanced security performance requirements for doorsets and windows.	

GROUND FLOOR TREATMENT & COMMERCIAL DOOR SYSTEM



A comprehensive Ground Floor Treatment System for application in high traffic buildings such as schools, leisure facilities, retail units and offices.

The modern design, clean lines, ease of fabrication and installation and range of glazing options make this system a popular choice where wide glazing spans are required.

Configurations

- Pivot
- Slide
- Automated
- Rebated
- Single door: open in or open out
- Double door: open in or open out

A comprehensive range of profiles and accessories are available to enable these to be achieved.

Design Options

- Single colour powder coated
- Single or double glazed options
- Economy profiles

TECHNICAL SPECIFICATION

Application	Commercial new build and refurbishment.		
	Framing	Single Door	Double Door
Maximum width	*	1100mm	1100mm
Maximum height	*	2500mm	2500mm
Jointing	Mechanical	Mechanical	Mechanical
Internally beaded option	Yes	Yes	Yes
Externally beaded option	Yes	Yes	Yes
Glazing Options - Single glazing	6mm - 11mm	6mm - 11mm	6mm - 11mm
Glazing Options - Double glazing	24mm	24mm - 28mm	24mm - 28mm
U-Value **	3.5 W/m ² K	3.5 W/m ² K	3.5 W/m ² K
Finishes	Mill finish.		
	Etched and anodised Silver AA25 or colours on request.		
	Polyester powder coat paint. See separate list for standard colour range available.		
Design standards	BS EN 12020-2:2001 Aluminium and aluminium alloys, extruded precision profiles. BS 3987:1991 Specification for anodic oxide coatings. BS EN 12206-1:2021 Paints and varnishes, coating of aluminium and aluminium alloys		

* Size limitations subject to site conditions.

** Values stated using appropriate glass

THERMAL REBATE DOOR SYSTEM



The Thermal Rebate Door is designed for residential and light commercial use. The suite of profiles will allow construction of single and double door types. The system is internally beaded as default. An externally beaded door leaf could be constructed if required by simply reversing the stiles/rails.

The rebate door system utilises the same profiles to offer commonality of design. Fixed sidelights or fan lights can be incorporated into the design offering the option for increased ventilation and natural light. The system is suitable for either an entrance door to the home or commercial entrances. Doors are made bespoke to customers liking.

Design Options

- Single or dual colour
- Open in or out
- Single or double doors
- Threshold and cill options
- Midrail options
- Hardware to mirror Folding Sliding Door

Performance

- Thermal transmittance: 1.6 W/m²K
- Water tightness: 100 pa
- Air permeability: 300 pa
- Wind resistance: 1200 pa



TECHNICAL SPECIFICATION

Application	Residential new build, refurbishment and light commercial.	
	Single Door	Double Door
Maximum door leaf width	1000mm	1000mm
Maximum door leaf height	2700mm	2700mm
Maximum door leaf weight	100kg	100kg
Jointing	Mechanical	
Internally beaded option	Yes	
Glazing options	Will accept insulating glass units and infill panels 28 – 32mm thick	
U-Value	1.6 W/m ² K	
Finishes	Mill finish. Etched and anodised Silver AA25 or colours on request. Polyester powder coat paint. See separate list for standard colour range available.	
Performance	Thermal transmittance: 1.6 W/m ² K Water tightness: 100 pa Air permeability: 300 pa Wind resistance: 1200 pa	
Single or dual colour profiles	Option	
Design standards	BS EN 12020-2:2001 Aluminium and aluminium alloys, extruded precision profiles. BS 3987:1991 Specification for anodic oxide coatings. BS EN 12206-1:2021 Paints and varnishes, coating of aluminium and aluminium alloys. BS 4873:2016 Specification for aluminium alloy windows and doorsets. BS EN 14351-1:2006+A2:2016 Windows and doors, performance characteristics. BS EN ISO 10077-2:2017 Thermal performance of windows, doors and shutters. PAS 24:2016 Enhanced security performance requirements for doorsets and windows.	

The system is designed to accept, 24mm or 28mm thick (DG) IGU's or infill panels



THERMAL FRAMING SYSTEM

For application in schools, retail buildings and public buildings where high thermal performance is required. This system is a secure and cost effective method of glazing.

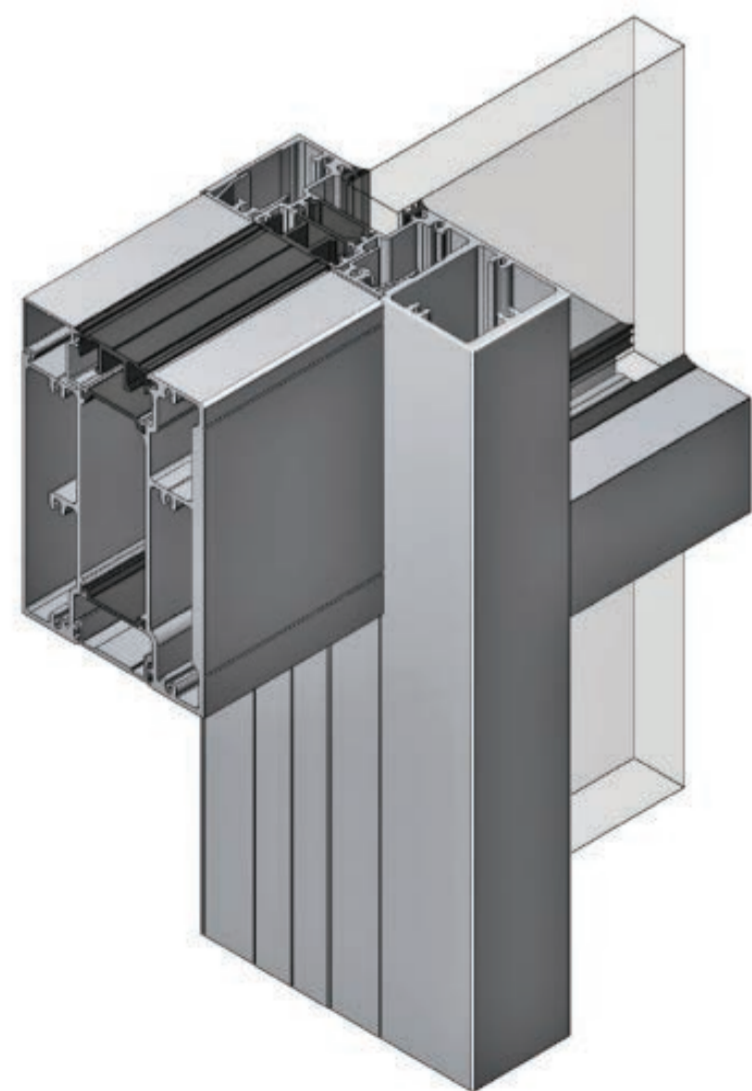
This flexible solution for low rise buildings ensures high thermal performance and meets the required building regulations.

Design Options

- Single or dual colour powder coated
- Double or triple glazing
- Solid infill panels
- Profiles can be shaped
- Heavy duty mullion for larger spans
- Auto header section
- Corner post

Design Standards

- BS EN 12020-2:2016
- BS 3987:1991
- BS EN 12206:2021
- BS EN 14351-1:2006+A2:2016
- BS EN ISO 10077-2:2017



THERMAL FRAMING SYSTEM

Application	Commercial new build and refurbishment
Maximum Frame Width	*
Maximum Frame Height	*
Joining	Mechanical
Internally Beaded Option	Yes
Externally Beaded Option	Yes
Double Glazing	28-32mm
Triple Glazing	28-32mm
U-Value	1.6 W/m ² k **
Finishes	Mill finish Etched and anodised to BS 3987: 1991 - Silver AA25 or colours on request. Polyester Powder coat paint to BS EN 12206-1:2004
Single or dual colour profiles	Option
Design standards	BS EN 12020-2:2016 BS 3987:1991 BS EN 12206:2021 BS EN 14351-1:2006+A2:2016 BS EN ISO 10077-2:2017

*Size limitations subject to site conditions

**Values stated achieved using centre pane unit of 1.2W.m²K



CURTAIN WALLING SYSTEM



The profiles can be used to create a flat, faceted, curved or angled façade using mullion and transom designs. Ideal for installation in public buildings, offices, leisure facilities and domestic applications, curtain wall maximises natural light in common areas and creates impressive building façades.

Design Options

- Slim 50mm sight lines
- 75, 100 or 125mm box & plate sections
- 50, 75, 100, 125, 150 or 175mm solid box sections
- Bull nose, aero or flat capping options
- Co-extruded pressure plate
- Reinforcement profiles
- Compatible roofing system

Performance

- Air permeability: 600Pa
- Water ingress: 600Pa
- Wind resistance: Serviceability - 1500Pa
- Wind resistance: Static - 2250Pa



TECHNICAL SPECIFICATION

Application	Residential and commercial - new build and refurbishment.
Maximum height	To be calculated in accordance with individual site conditions.
U-Value	To be calculated in accordance with individual site conditions
Jointing	Mechanical corner and transom / mullion jointing..
Glazing options	Insulated Glass Units or composite panels: 24mm, 28mm and 30mm thick. Single glazed variants: 6mm, 6.4mm, 8.8mm, 10mm, 10.8mm, 14mm, 17mm and 19mm thick.
Performance	Water ingress 600Pa Air permeability 600Pa Wind resistance - serviceability - 1500Pa Wind resistance - static - 2250Pa
Finishes	Mill finish. Etched and anodised Silver AA25 or colours on request. Polyester powder coat paint. See separate list for standard colour range available.
Single or dual colour profiles	Option
Design standards	BS EN 12020-2:2001 <i>Aluminium and aluminium alloys, extruded precision profiles.</i> BS 3987:1991 <i>Specification for anodic oxide coatings.</i> BS EN 12206-1:2021 <i>Paints and varnishes, coating of aluminium and aluminium alloys.</i> BS EN 13830:2015+A1:2020 <i>Curtain walling - product standard.</i> CWCT & BS EN 13830 <i>Test data.</i>



 **TRADE ✓
ALUMINIUM**
WINDOW AND DOOR PRODUCTS