



TRADE ✓
ALUMINIUM
WINDOW AND DOOR PRODUCTS

ALUMINIUM FRONT DOOR RANGE



All Doors 44mm Overall Thickness - Quadruple Glazed

NEVIS



9005 7016 9016 ANY RAL

RAL1019 GREY BEIGE

ARMADALE



9005 7016 9016 ANY RAL

RAL6019 PASTEL GREEN

KENSINGTON



9005 7016 9016 ANY RAL

RAL7032 PEBBLE GREY

POLLOK



9005 7016 9016 ANY RAL

RAL7038 AGATE GREY

BENMORE



9005 7016 9016 ANY RAL

RAL7160 ANTHRACITE GREY

GREENWICH



9005 7016 9016 ANY RAL

RAL9016 TRAFFIC WHITE

CATHEDRAL



9005 7016 9016 ANY RAL

RAL9005 JET BLACK

MOIRA



9005 7016 9016 ANY RAL

RAL7015 SLATE GREY

All Doors 44mm Overall Thickness - Quadruple Glazed



KINGSBURY



9005 7016 9016 ANY RAL

RAL6004 BLUE GREEN

NEWYDD



9005 7016 9016 ANY RAL

RAL8011 BROWN

BOTANIC



9005 7016 9016 ANY RAL

RAL1019 GREY BEIGE

All doors are available in either single or double format.

HILLIER



9005 7016 9016 ANY RAL

RAL7015 SLATE GREY



All Doors 44mm Overall Thickness - Quadruple Glazed

PEMBROKESHIRE



- 9005
- 7016
- 9016
- ANY RAL

RAL9005 JET BLACK

DELAMERE



- 9005
- 7016
- 9016
- ANY RAL

RAL7016 ANTHRACITE GREY

SNOWDON



- 9005
- 7016
- 9016
- ANY RAL

RAL3002 CARBINE RED

SNOWDONIA



- 9005
- 7016
- 9016
- ANY RAL

RAL5010 GENTIAN BLUE

DARTMOOR



- 9005
- 7016
- 9016
- ANY RAL

RAL7038 AGATE GREY

DARTMOOR LIGHT



- 9005
- 7016
- 9016
- ANY RAL

RAL6019 PASTEL GREEN

CAIRNGORMS



- 9005
- 7016
- 9016
- ANY RAL

RAL7032 PEBBLE GREY

BRECON



- 9005
- 7016
- 9016
- ANY RAL

RAL9016 TRAFFIC WHITE

All Doors 44mm Overall Thickness - Quadruple Glazed



LOMOND



9005 7016 9016 ANY RAL

RAL9005 JET BLACK

DOVEDALE



9005 7016 9016 ANY RAL

RAL1023 TRAFFIC YELLOW

TROSSACHS



9005 7016 9016 ANY RAL

RAL7160 ANTHRACITE GREY

All doors are available in either single or double format.

EXMOOR



9005 7016 9016 ANY RAL

RAL6019 PASTEL GREEN

All Doors 44mm Overall Thickness - Quadruple Glazed

OSTERLEY



9005 7016 9016 ANY RAL

RAL3002 CARBINE RED

TREMENHEERE



9005 7016 9016 ANY RAL

RAL6004 BLUE GREEN

EDGCUMBE



9005 7016 9016 ANY RAL

RAL1023 TRAFFIC YELLOW

MARWELL



9005 7016 9016 ANY RAL

RAL5010 GENTIAN BLUE

FISTRAL



9005 7016 9016 ANY RAL

RAL6019 PASTEL GREEN

SOLID



9005 7016 9016 ANY RAL

RAL8011 BROWN

VICTORIA



9005 7016 9016 ANY RAL

RAL1019 GREY BEIGE

GROSVENOR



9005 7016 9016 ANY RAL

RAL7032 PEBBLE GREY

All Doors 44mm Overall Thickness - Quadruple Glazed

OAKWOOD



9005 7016 9016 ANY RAL

RAL9005 JET BLACK

HIDCOTE



9005 7016 9016 ANY RAL

RAL7016 ANTHRACITE GREY

DERWENT



9005 7016 9016 ANY RAL

RAL7015 SLATE GREY

POLESDEN



9005 7016 9016 ANY RAL

RAL7038 AGATE GREY

TREDEGAR



9005 7016 9016 ANY RAL

RAL9016 TRAFFIC WHITE



9005 7016 9016 ANY RAL

RAL7032 PEBBLE GREY

MORLICH



SIDELIGHTS AND FANLIGHTS - Sidelights available for all door designs in either clear toughened glass or satin glass



Stainless Steel Pull Bars .

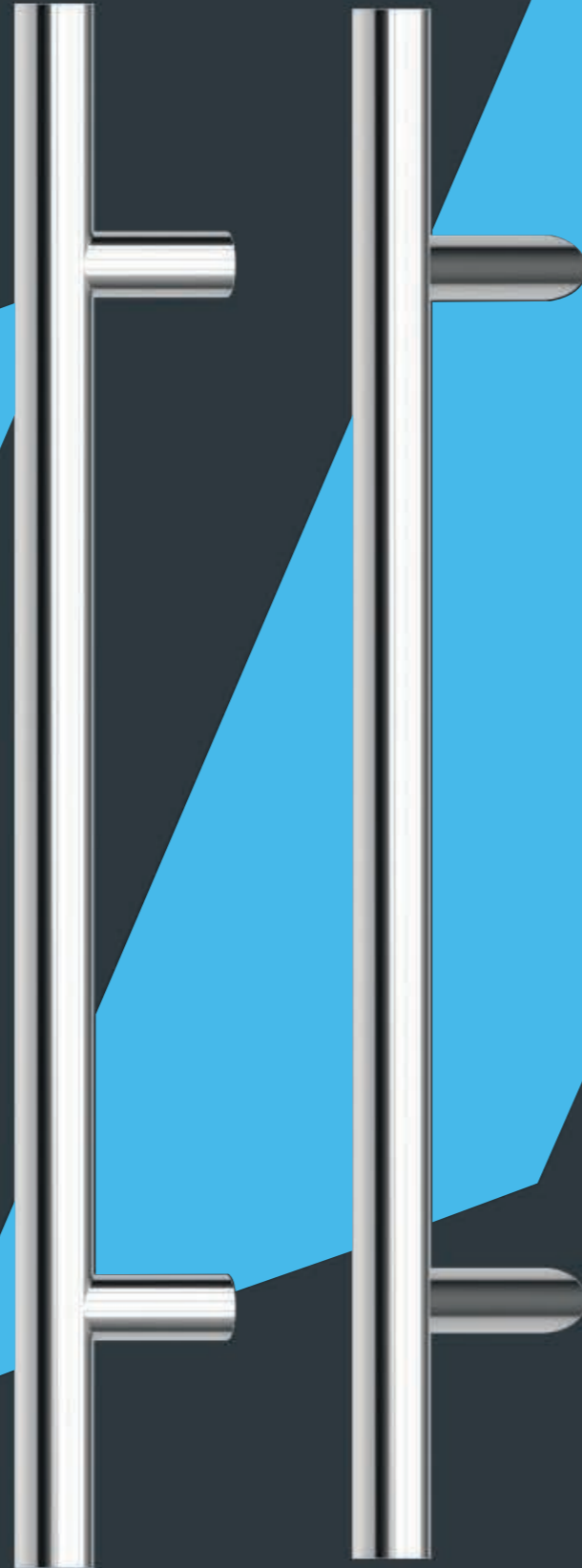
Trade Aluminium pull bars combine **high quality stainless steel** and **contemporary styling**.

The range is available in **2 modern designs** - inline and offset - and is available in 8 lengths from 400mm up to 1800mm. The off-set design is available in 45° and 60° angles to suit slimmer profile systems.

The pull bars range is **simple to install**, with **3 fixing kit** options available.

Finally, Trade Aluminium stainless steel pull bars have been independently tested to BSEN 1670 achieving the **highest grade 5 rating** for **corrosion resistance**.

In fact, the range has been tested to **twice** the industry standard requirement achieving **1000 hours** in a salt spray chamber for a **durable, long-lasting finish, guaranteed for 25 years**.



Modern Design.



High Quality Finish

Brushed stainless steel, grade 304

3 Fixing Options

Through fix, concealed fix or back-to-back

2 Styles

Inline or Offset

8 Lengths

400mm, 600mm, 800mm, 1000mm, 1200mm, 1400mm, 1600mm, 1800mm

Universal

Suitable for both left and right-handed doors



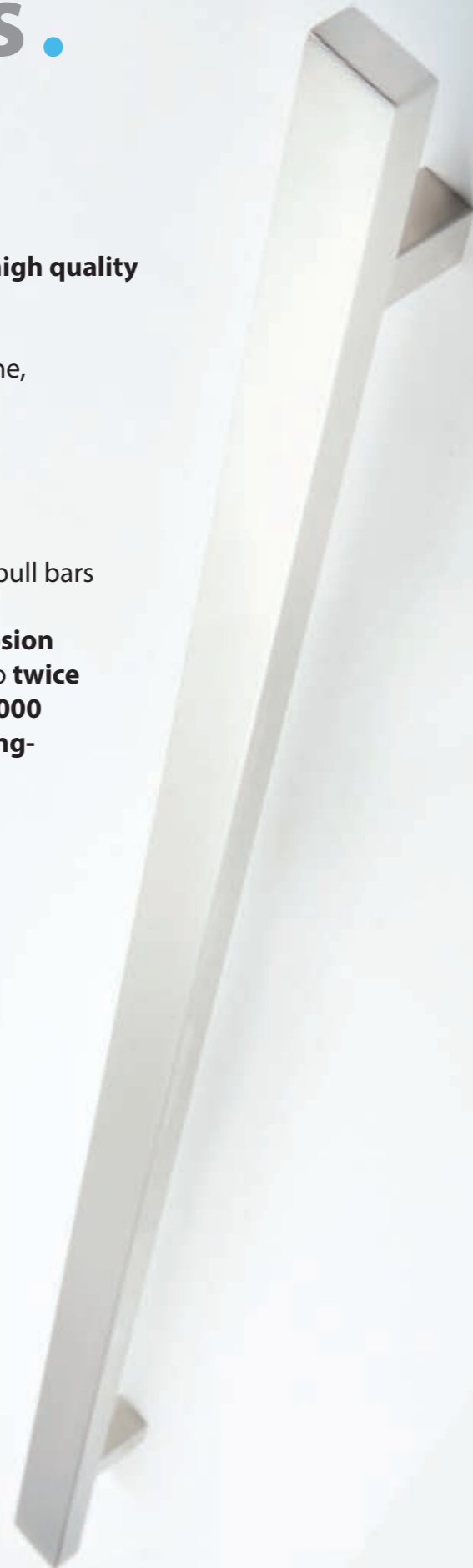
Stainless Steel Square Bars .

Trade Aluminium square pull bars combine **high quality stainless steel** and **contemporary styling**.

The range is available in **3 square designs**: inline, offset and mitred.

The pull bars range is **simple to install**, with **3 fixing kit options** available.

Finally, Trade Aluminium stainless steel square pull bars have been independently tested to BSEN 1670 achieving the **highest grade 5 rating for corrosion resistance**. In fact, the range has been tested to **twice** the industry standard requirement achieving **1000 hours** in a salt spray chamber for a **durable, long-lasting finish, guaranteed for 25 years**.



Contemporary Design .



High Quality Finish
Brushed Stainless Steel, grade 316

Universal
Suitable for both left and right-handed doors

3 Fixing Options
Through fix, concealed fix or back-to-back

Inline
1200mm

Offset
1200mm

Mitred
1200mm

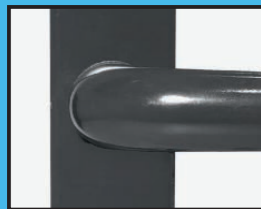


Trade Aluminium Door Handle .

Trade Aluminium door handles combine **high quality stainless steel** with **elegant, modern design**.

Trade Aluminium range has been independently tested **beyond industry standards** for **long-lasting** weather resistance and **high operational performance**, and is **guaranteed for 25 years**.

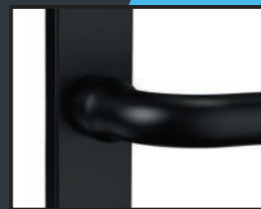
Handle Colour Finishes.



Anthracite Grey



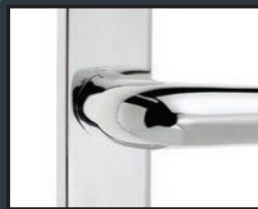
Traffic White



Jet Black



Brushed Chrome



Polished Chrome



Polished Gold

Elegant Design .



High Quality Finish

Manufactured from high quality stainless steel, available in grade 304 & 316.

Stylish

Simply designed for modern aesthetic.

Ergonomic

A sprung lever ensures consistent return to 90 degree to avoid 'handle snag'.

Easy installation

Universal design for both left and right handed doors. 240mm backplate suits most popular lock sizes. Supplied complete with screws.



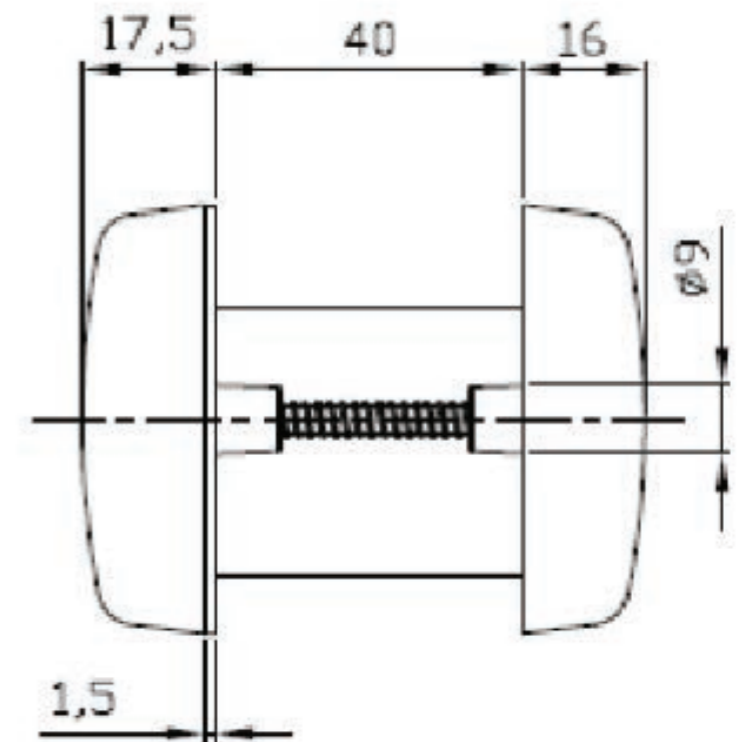
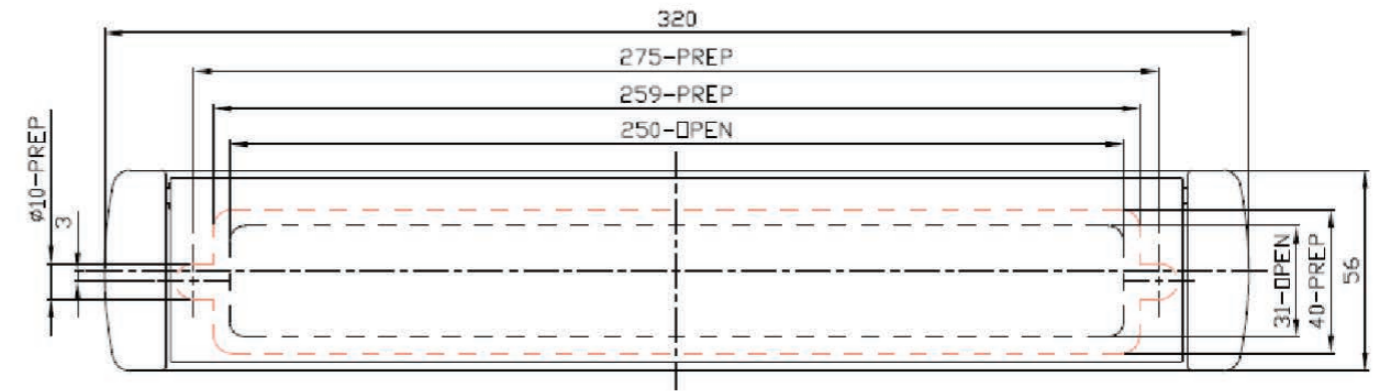
Omega Slim Letterplate



Finish

- White (RAL9016)
- Enduro Steel
- Antique Black
- Black (RAL9005)
- PVD Gold
- Polished Chrome
- Satin Chrome
- Smokey Chrome
- Anthracite Grey (RAL7016)

- Contemporary styling
- Standard and Slim versions
- 56mm Slim version is ideal for slim mid-rails/transoms
- Part of the greenteQ Suite of matching door and window furniture
- Nylon brush seal to inside and external foam seal
- Suits doors from 40 – 80mm thick
- Near 180° opening (in and out)
- Durable – tested to BS EN 13724 and BS EN 1670
- Cushioned closing action
- 326 x 79mm (Standard) and 320 x 56mm (Slim) overall size*
- 250 x 39mm (Standard) and 250 x 31mm (Slim) internal aperture*





Locking System

Locks ready for all kinds of application

The key-operated multisafe lock 855/855GL impresses thanks to its effortless operation and increased locking convenience. It's ideal for use on front doors and doors for construction projects, regardless of the material. Various locking types mean you're sure to find the right solution for all security requirements.



Flexibility in use

The modular design allows for flexible use in front doors of private and commercial buildings.



Increased locking convenience

Simple operation and high locking power thanks to precise gear design.



Security you can always rely on

Robust and long-lasting – tested over at least 200,000 operations.



Versatile range

Various locking types offer solutions for all kinds of security requirements.



Efficient upgrades

Reduced storage costs thanks to additional components that can be retrofitted at any time.



Can be used in lots of different ways

Can be used on right or left, suitable for single and double-leaf doors.



www.tradealuminium.co.uk

sales@ta-uk.co.uk

0151 303 0303