

# SEPTIC TANK

1100 IMPERIAL GALLONS  
(5000 LITRES)

# A & B

## PRECAST MANUFACTURING LIMITED

R.R.#5, BELLEVILLE, ONTARIO, K8N 4Z5  
Phone: (613) 962-9111 Fax: (613) 962-4686  
Toll Free: 1-800-267-2851

### SPECIFICATION DETAILS

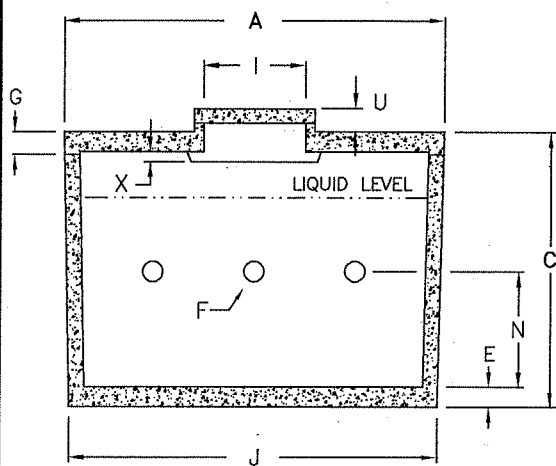
Concrete Strength: 4641 PSI (32 MPa)

Weight:	Top	Bottom	Total
	3,300 (1,500)	8,600 (3,900)	11,900 lbs. (5400) kg.

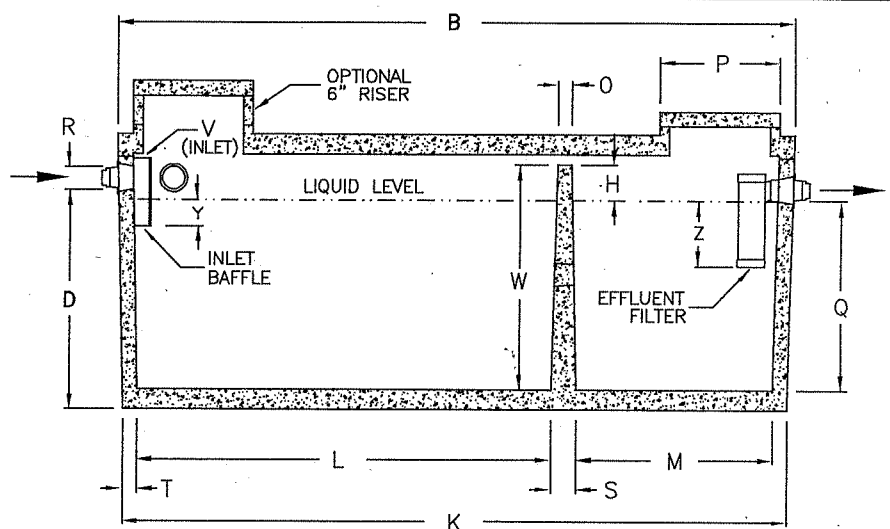
Reinforcing: Lid - 6 pcs @ 10M rebar longitudinal  
 - 14 pcs @ 10M rebar transverse  
 Sides & Bottom - 4 pcs @ 10M rebar longitudinal  
 - 9 pcs @ 10M rebar transverse  
 - Top rebar on sides to be continuous  
 c/w 12"x12" 10M rebar corner splicers

### NOTES

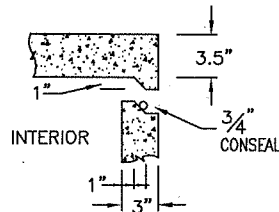
1. Close tolerance of tongue and groove joint and a fibrous mastic sealant guarantee a solid structural and water-tight joint.
2. Concrete risers in 6" (150mm) increments are available for both access openings to allow for variable burial depths.
3. Maximum burial depth is 24" (600mm) from top of lid to finished grade. Additional reinforcing can be added to allow for deeper burials.
4. Effluent filter to be Tuf-Tite EF-6 (1500 gal/day)
5. Inlet and Outlet devices to be POLY-III CE Seals.
6. All concrete c/w 4.0 kg/m<sup>3</sup> structural synthetic fibre.



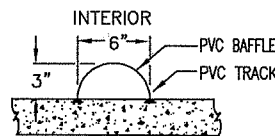
Cross Section



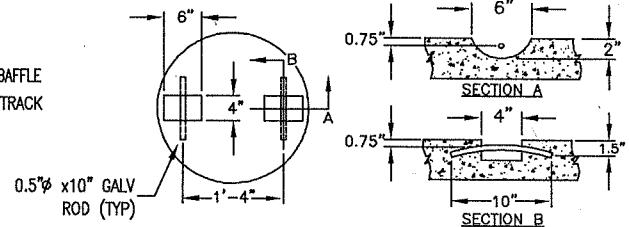
Longitudinal Section



Joint Section



Baffle Detail



Lifting Device Detail

### DIMENSIONAL DATA

Inches (mm)

December 30, 2020

A: Overall Width	75.4 (1915.2)	O: Thickness @ Top of Partition Wall	2.8 (71.1)
B: Overall Length	134.75 (3422.6)	P: Outside Diameter Of Risers and Lid	24.0 (609.6)
C: Overall Height	55.5 (1409.7)	Q: Top of Floor to Bottom of Outlet (Liquid Depth)	37.6 (955.0)
D: Base to Bottom of Inlet	43.5 (1109.9)	R: Diameter of Inlet and Outlet	3.0 or 4.0 (76.2 or 101.6)
E: Thickness of Base	4.0 (101.6)	S: Thickness @ Base of Divider Wall	5.0 (127.0)
F: Total of 3 Flow Throughs	37.7 sq/in (243.2 sq/cm)	T: Exterior Wall Thickness	3.0 (76.2)
G: Thickness of Lid	4.0 (101.6)	U: Top of Lid to Top of Access Cover	5.0 (127.0)
H: Scum Capacity	6.0 (152.4)	V: Top of Inlet Baffle to U/S of Top	1.0 (25.4)
I: Inside Ø of Risers & Access Hole	20.0 (508.0)	W: Floor to Top of Partition Wall	43.6 (1107.4)
J: Base Width	73.0 (1854.2)	X: Air Circulation Space	3.9 (99.0) 97.5 sq/in (628.6 sq/cm)
K: Base Length	132.0 (3352.8)	Y: Inlet Liquid Penetration	4.0 (101.6)
L: Large Compartment	82.2 (2087.9)	Z: Outlet Liquid Penetration	12.6 (320.0)
M: Small Compartment	39.0 (990.6)	Length of Inlet Baffle	12.0 (304.8)
N: Floor to ⌀ of Flow Through Holes	22.8 (579.1)	Length of Effluent Filter	20.5 (520.7)