

HOLDING TANK

2,000 IMPERIAL GALLONS
(9,000 LITRES)

A & B PRECAST MANUFACTURING LIMITED

R.R.#5, BELLEVILLE, ONTARIO, K8N 4Z5
Phone: (613) 962-9111 Fax: (613) 962-4686
Toll Free: 1-800-267-2851

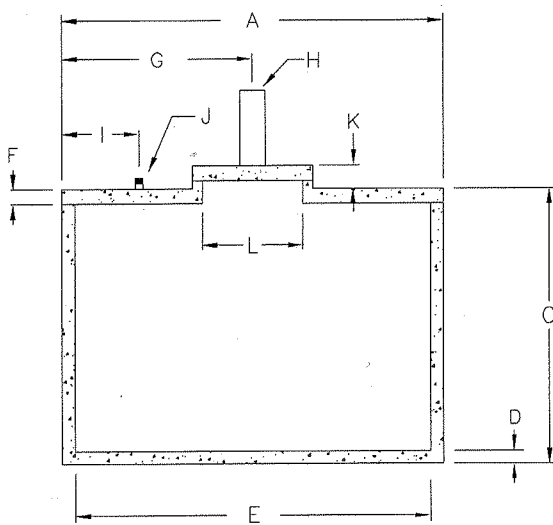
SPECIFICATION DETAILS

Concrete Strength: 4350 PSI (30 MPa)
Weight: Top Bottom Total
 5100 9900 15000 lb.
 (2310) (4490) (6800) kg.

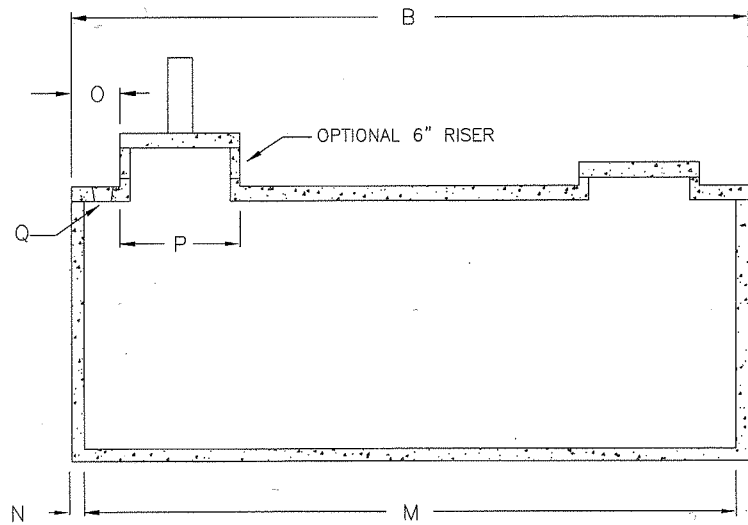
Reinforcing: Lid - Longitudinal - 6 @ 10M
 - Transverse - 15 @ 10M
Sides - Vertical - 6 @ 10M c/w 250mm bend into bottom
 - Horizontal - 3 @ 10M
Ends - Vertical - 2 @ 10M c/w 250mm bend into bottom
 - Horizontal - 3 @ 10M c/w 250mm bend into sides
Bottom - Longitudinal - 2 @ 10M
 - Transverse - 10 @ 10M

NOTES

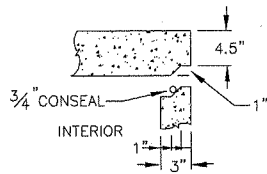
1. Close tolerance of tongue and groove joint and a fibrous mastic sealant guarantee a solid structural and water-tight joint.
2. Concrete risers in 6" (150mm) increments are available for both access openings to allow for variable burial depths.
3. Maximum burial depth is 24" (600mm) from top of lid to finished grade. Additional reinforcing can be added to allow for deeper burials.
4. Custom openings and fittings can be "cast in place" as required.
5. Inlet and Outlet devices to be POLY-III CE Seals.
6. All concrete c/w 4.0 kg/m³ structural synthetic fibre



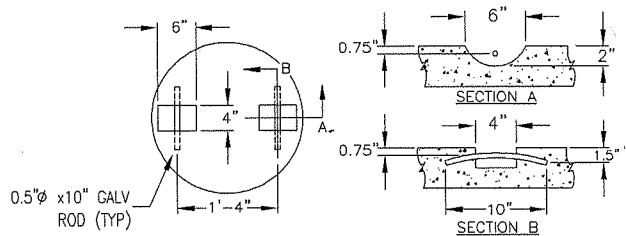
Cross Section



Longitudinal Section



Joint Section



Lifting Device Detail

DIMENSIONAL DATA

Inches (mm)

December 30, 2020

A: Overall Width	84.0 (2133.6)	K: Top of Lid to Top of Access Cover	4.5 (114.3)
B: Overall Length	154.0 (3911.6)	L: Inside \varnothing of Risers & Access Hole	20.0 (508.0)
C: Overall Height	57.5 (1460.5)	M: Inside Base Length	148.0 (3759.2)
D: Thickness of Base	3.5 (88.9)	N: Exterior Wall Thickness	3.0 (76.2)
E: Inside Base Width	78.0 (1981.2)	O: Endwall to Access Hole	14.9 (378.5)
F: Thickness of Lid	4.5 (114.3)	P: Outside Diameter Of Risers and Lid	24.0 (609.6)
G: Sidewall to \varnothing of PVC Pumpout	42.0 (1066.8)	Q: 4" \varnothing (101.6 mm) Inlet Coupling	
H: Diameter PVC Pumpout	4.0 (101.6)	Endwall to \varnothing of Alarm Connection	26.9 (683.3)
I: Sidewall to \varnothing of Alarm Connection	25.1 (637.5)		
J: 1" \varnothing Galv. Threaded Pipe for Alarm Connection	0.75 (19.1)		