

SEPTIC TANK

2000 IMPERIAL GALLONS
(9000 LITRES)

A & B PRECAST MANUFACTURING LIMITED

R.R.#5, BELLEVILLE, ONTARIO, K8N 4Z5
Phone: (613) 962-9111 Fax: (613) 962-4686
Toll Free: 1-800-267-2851

SPECIFICATION DETAILS

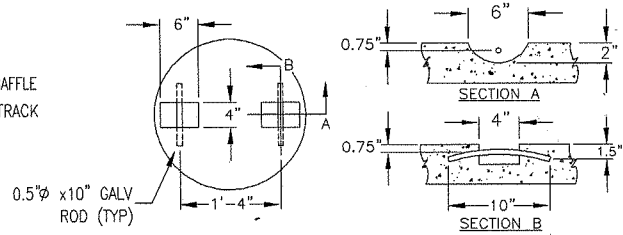
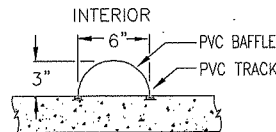
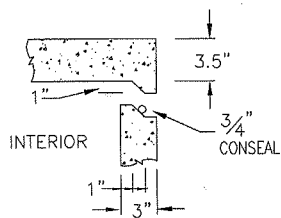
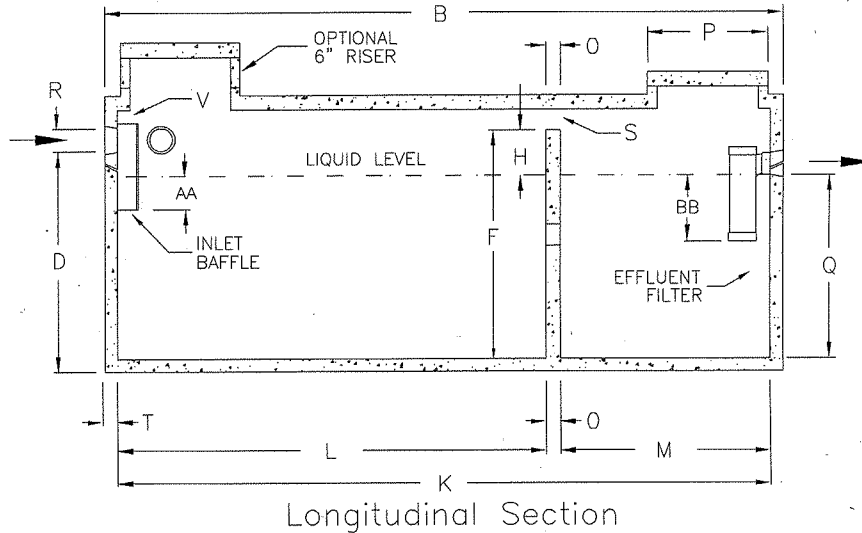
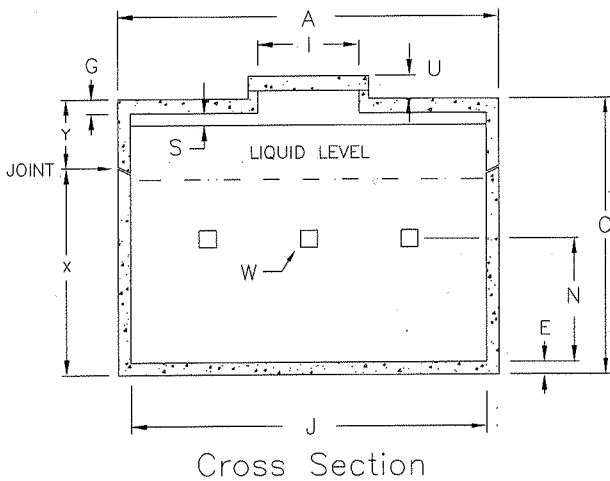
Concrete Strength: 4641 PSI (32 MPa)

Weight: Top Bottom Total
 5900 11000 16900 lb
 (2680) (4990) (7670) kg

Reinforcing: Lid – 8 pcs @ 10M rebar longitudinal
 – 17 pcs @ 10M rebar transverse
Sides – 3 pcs @ 10M rebar longitudinal
 – 6 pcs @ 10M rebar transverse
 – Top 3 rebars to be continuous c/w
 12" x 12" 10M rebar corner splicers
Bottom – 3 pcs @ 10M rebar longitudinal
 – 11 pcs @ 10M rebar transverse

NOTES

1. Close tolerance of tongue and groove joint and a fibrous mastic sealant guarantee a solid structural and water-tight joint.
2. Concrete risers in 6" (150mm) increments are available for both access openings to allow for variable burial depths.
3. Maximum burial depth is 24" (600mm) from top of lid to finished grade. Additional reinforcing can be added to allow for deeper burials.
4. Effluent filter to be Tuf-Tite EF-6 (1500 gal/day)
5. Inlet and Outlet devices to be POLY-III CE Seals.
6. All concrete c/w 4.0 kg/m³ structural synthetic fibre



DIMENSIONAL DATA

Inches (mm)

December 30, 2020

A: Overall Width	84.0 (2133.6)	P: Outside Diameter Of Risers and Lid	24.0 (609.6)
B: Overall Length	154.0 (3911.6)	Q: Top of Floor to Bottom of Outlet (Liquid Depth)	48.0 (1219.2)
C: Overall Height	65.0 (1651.0)	R: Diameter of Inlet and Outlet	4.5 (114.3)
D: Base to Bottom of Inlet	55.5 (1409.7)	S: Air Circulation Space	2.5 (63.5) 195.0 sq/in (1258.1 sq/cm)
E: Thickness of Base	3.5 (88.9)	T: Exterior Wall Thickness	3.0 (76.2)
F: Floor to Top of Partition Wall	54.0 (1371.6)	U: Top of Lid to Top of Access Cover	4.5 (114.3)
G: Thickness of Lid	4.5 (114.3)	V: Top of Inlet Baffle to U/S of Top	1.0 (25.4)
H: Scum Capacity	6.0 (152.4)	W: Total of 3 Flow Throughs	75 sq/in (484 sq/cm)
I: Inside ϕ of Risers & Access Hole	20.0 (508.0)	X: Base to Lid Joint	53.0 (1346.2)
J: Inside Base Width	78.0 (1981.2)	Y: Lid Joint to Top of Lid	11.5 (292.1)
K: Inside Base Length	148.0 (3759.2)	AA: Inlet Liquid Penetration	4.5 (114.3)
L: Large Compartment	97.0 (2463.8)	BB: Outlet Liquid Penetration	12.6 (320.0)
M: Small Compartment	48.0 (1219.2)	Length of Inlet Baffle	12.0 (304.8)
N: Floor to ϕ of Flow Through Holes	29.0 (736.6)	Length of Effluent Filter	20.5 (520.7)
O: Thickness of Partition Wall	3.0 (76.2)		