



Whirlpools
Bathtubs
Spas
Saunas
Steam Solutions
Shower Panels

wellness

Price List. Effective from Jan 2018



JAQUAR GROUP GLOBAL HEADQUARTERS

LEED Platinum Certified by USGBC
Net Zero Energy Building spread over 48,000 sq. m.



A leading global super brand known for its excellence in innovation and technology. The highest build standards combine with the most beautifully designed aesthetics to provide world-class products for tough conditions. With a superb blend of ergonomic shapes, contemporary styles and meticulous finish, Jaquar continues to enthrall millions of hearts across the world with its wide range of concepts and products.



It pays a tribute to the fine traditions of exquisite craftsmanship and precision where design, technology and talent combine to deliver a masterpiece. Artize products are crafted for luxurious bath spaces. Perfect harmony is the very essence of Artize—together as coordinates or even as individual pieces. Artize's exquisite craftsmanship is so stunning that it can inspire the design principles of not just your bath spaces but of your entire living spaces.



Conceived back in 1960, the Jaquar Group has been built on the platform of the highest quality standards, aesthetics and the intent of providing world-class products. Today, the Jaquar Group caters to luxury, premium and value bathroom segments with Artize, Jaquar and Essco brands, respectively, for residential and commercial sectors across the globe.



For over five decades now, Essco, the bath fittings brand, has been supporting affordable and sustainable housing in India. Essco is a value-for-money bath brand from the Jaquar Group, which is the leader in Complete Bathroom Solutions. Essco, a pan-India brand, added a whole new chapter in the bath fittings industry by ushering in the era of the organised bath market. Essco set out with an obsession for good quality products at affordable prices, one that was unheard of in the corridors of bath fittings manufacturers then. With its 10 years of warranty and impeccable customer service, Essco is standing tall in the Indian bath fittings Industry since 1960 and touching more hearts every year.



Jaquar offers complete lighting solutions for residential, commercial and outdoor applications. Jaquar's extensive and comprehensive portfolio lets you choose for varied budgets without compromising on quality and reliability, whether it is LED Bulbs, Tube lights, Chandeliers, Landscape lighting or Track lights.

With innovative technology that includes high quality drivers and unmatched services like lighting planning clubbed with pan-India onsite assistance, Jaquar Lighting is taking forward the group's legacy of trust and customer delight.





INDEX

Whirlpools	5
Freestanding Bathtubs	9
Bathtubs	12
Bathtub Fillers	16
Accessories	19
Spas	23
Saunas	28
Steam Solutions	31
Shower Panels	34

Jaquar is India's no. 1, and the largest-selling, bath fittings brand. Over the last 58 years, it has led the evolution of bathrooms in India from being small, purely functional places to luxurious, aspirational spaces. Today, Jacquar is an internationally recognised brand present in 45 countries across Europe, the Middle East, Africa and the Asia-Pacific region.

Jaquar delivers over 1.9 million bathrooms every year, and with the help of a 770-strong trained team, offers comprehensive maintenance services through a nationwide network.

The most searched bath brand in India (Google Trend Search Jan '12 – Jan '15), Jacquar is also India's most trusted bath brand, according to Jacquar Syndicated Research Neilsen'13, Percept'16 .



whirlpools



Kubix Prime

Specifications:	Size (in cm)	MRP
JWP-WHT-KUBIXPM180CX (Combi System) • Material- PMMA • Reinforcement- PU Green • Water Jets- 8 • Slim and Flat Water Jets • Air Jets- 16 • Back Jets-4 • 1.4 HP Water Pump • 0.9 HP Air Blower • Chromotherapy • Headrest • Overflow cum Filler	180X110X47	1,85,000
JWP-WHT-KUBIXPM180WX (Water System)	180X110X47	1,65,000
JWA-WHT-FP180X (Front Panel)		9,150
JWA-WHT-SP110X (Side Panel)		6,000



Fonte 150

Specifications:	Size (in cm)	MRP
JWP-WHT-FONTE150CX (Combi System) • Material- PMMA • Reinforcement- PU Green • Water Jets- 6 • Slim and Flat Water Jets • Air Jets-12 • Back Jets-4 • 1 HP Water Pump • 0.9 HP Air Blower • White Light • Headrest • Overflow with Drain Pipe	150X75X42	1,25,000
JWP-WHT-FONTE150WX (Water System)	150X75X42	1,08,000
JWP-WHT-FONTE150PCX Combi System Project (6 Water + 12 Air Jets) with out light	150X75X42	1,03,000
JWP-WHT-FONTE150PWX Water System Project (6 Water Jets) with level sensor electronic key pad	150X75X42	72,000
JWA-WHT-FONTE 150FPX (Front Panel)		6,000
JWA-WHT-SP75X (Side Panel)		4,500



Fonte 170

Specifications:	Size (in cm)	MRP
JWP-WHT-FONTE170CX (Combi System) • Material- PMMA Material • Reinforcement- PU Green • Water Jets- 6 • Slim and Flat Water Jets • Air Jets-12 • Back Jets- 4 • 1 HP Water Pump • 0.9 HP Air Blower • White Light • Headrest • Overflow with Drain Pipe	170X75X42	1,30,000
JWP-WHT-FONTE170WX (Water System)	170X75X42	1,12,000
JWP-WHT-FONTE170PCX Combi System Project (6 Water+12 Air Jet) with out light	170X75X42	1,06,000
JWP-WHT-FONTE170PWX Water System Project (6 Water) with level sensor electronic key pad	170X75X42	76,000
JWA-WHT-FONTE 170FPX (Front Panel)		7,000
JWA-WHT-SP75X (Side Panel)		4,500



Kubix

Specifications:	Size (in cm)	MRP
JWP-WHT-KUBIX180CX (Combi System) • Slim Jets 80 MM • Water Jets- 8+4 • Air Jets-12 • Water pump-1.4 HP • Air Pump- 0.95 HP • Overflow cum Filler • Chromotherapy • Disinfection • Electronic Control • Level Sensor • Frame • Head rest	180x80x47	1,72,000
JWP-WHT-KUBIX180WX (Water System) • Slim Jets 80 MM • Water Jets-8+4 • Chromotherapy • Water pump-1.2 HP • Overflow cum Filler • Electronic • Disinfection Control • Level Sensor • Frame • Head rest	180x80x47	1,50,000
JWA-WHT-FP180X (Front Panel)		6,450
JWA-WHT-SP80X (Side Panel)		9,150



Alive

Specifications:	Size (in cm)	MRP
JWP-WHT-ALIVE180CX (Combi System)	180x80x47	1,72,000
• Slim Jets 80 MM • Water Jets-8+4 • Air Jets-12		
• Water pump-1.4 HP • Air Pump- 0.95 HP		
• Overflow cum Filler • Chromotherapy • Disinfection		
• Electronic Control • Level Sensor • Frame • Head rest		
JWP-WHT-ALIVE180W (Water System)	180x80x47	1,50,000
• Slim Jets 80 MM • Water Jets-8+4		
• Water pump-1.2 HP • Overflow cum Filler		
• Chromotherapy • Disinfection • Electronic Control		
• Level Sensor • Frame • Head rest		
JWA-WHT-FP180X (Front Panel)		9,150
JWA-WHT-SP80X (Side Panel)		6,450



D'Arc

Specifications:	Size (in cm)	MRP
JWP-WHT-DARC180CX (Combi System)	180x110x47	1,82,000
• Slim Jets 80 MM • Water Jets-8+4 • Air Jets-12		
• Water pump-1.4 HP • Air Pump-0.95 HP		
• Overflow cum Filler • Chromotherapy • Disinfection		
• Electronic Control • Level Sensor • Frame • Head rest		
JWP-WHT-DARC180WX (Water System)	180x110x47	1,59,000
• Slim Jets 80 MM • Water Jets-8+4 • Chromotherapy		
• Disinfection • Electronic Control • Level Sensor		
• Frame • Head rest • Water pump-1.4 HP		
• Overflow cum Filler		
JWA-WHT-FP180X (Front Panel)		9,150
JWA-WHT-SP110X (Side Panel)		6,150



Fonte-R

Specifications:	Size (in cm)	MRP
JWP-WHT-POINT150CX (Combi System)	150x150x47	1,78,000
• Slim Jets 80 MM • Water Jets- 8 • Air Jets- 16		
• Water pump- 1.4 HP • Air Pump- 0.95 HP		
• Overflow cum Filler • Chromotherapy • Disinfection		
• Electronic Control • Level Sensor • Frame • Head rest		
JWP-WHT-POINT150WX (Water System)	150x150x47	1,53,000
• Slim Jets 80 MM • Water Jets- 8		
• Water pump- 1.2 HP • Overflow cum Filler		
• Chromotherapy • Disinfection • Electronic Control		
• Level Sensor • Frame • Head rest		



Vignette Prime

Specifications:	Size (in cm)	MRP
JWP-WHT-VGNT190CX (Combi System)	190x90x47	1,72,000
• Slim Jets 80 MM • Water Jets- 8+4 • Air Jets- 12		
• Water pump- 1.4 HP • Air Pump- 0.95 HP		
• Overflow cum Filler • Chromotherapy • Disinfection		
• Electronic Control • Level Sensor • Frame • Head rest		
JWP-WHT-VGNT190WX (Water System)	190x90x47	1,50,000
• Slim Jets 80 MM • Water Jets- 8+4		
• Water pump- 1.2 HP • Overflow cum Filler		
• Chromotherapy • Disinfection • Electronic Control		
• Level Sensor • Frame • Head rest		
JWA-WHT-VGNTFPX (Front Panel)		9,150
JWA-WHT-VGNTSPX (Side Panel)		6,150



Fusion

Specifications:	Size (in cm)	MRP
JWP-WHT-GMI140CX (Combi System) • Slim Jets 80 MM • Water Jets- 6+4 • Air Jets- 12 • Water pump- 1 HP • Air Pump- 0.95 HP • Overflow cum Filler • White light • Electronic Control • Level Sensor Frame • Head rest	140x140x45	1,42,000
JWP-WHT-GMI140WX (Water System) • Slim Jets 80 MM • Water Jets-6+4 • Water pump-1 HP • Overflow with Drain Pipe • White light • Electronic Control • Level Sensor Frame • Head rest	140x140x45	1,20,000
JWA-WHT-FUSNCPX (Angular Panel)		11,900



Fonte 180

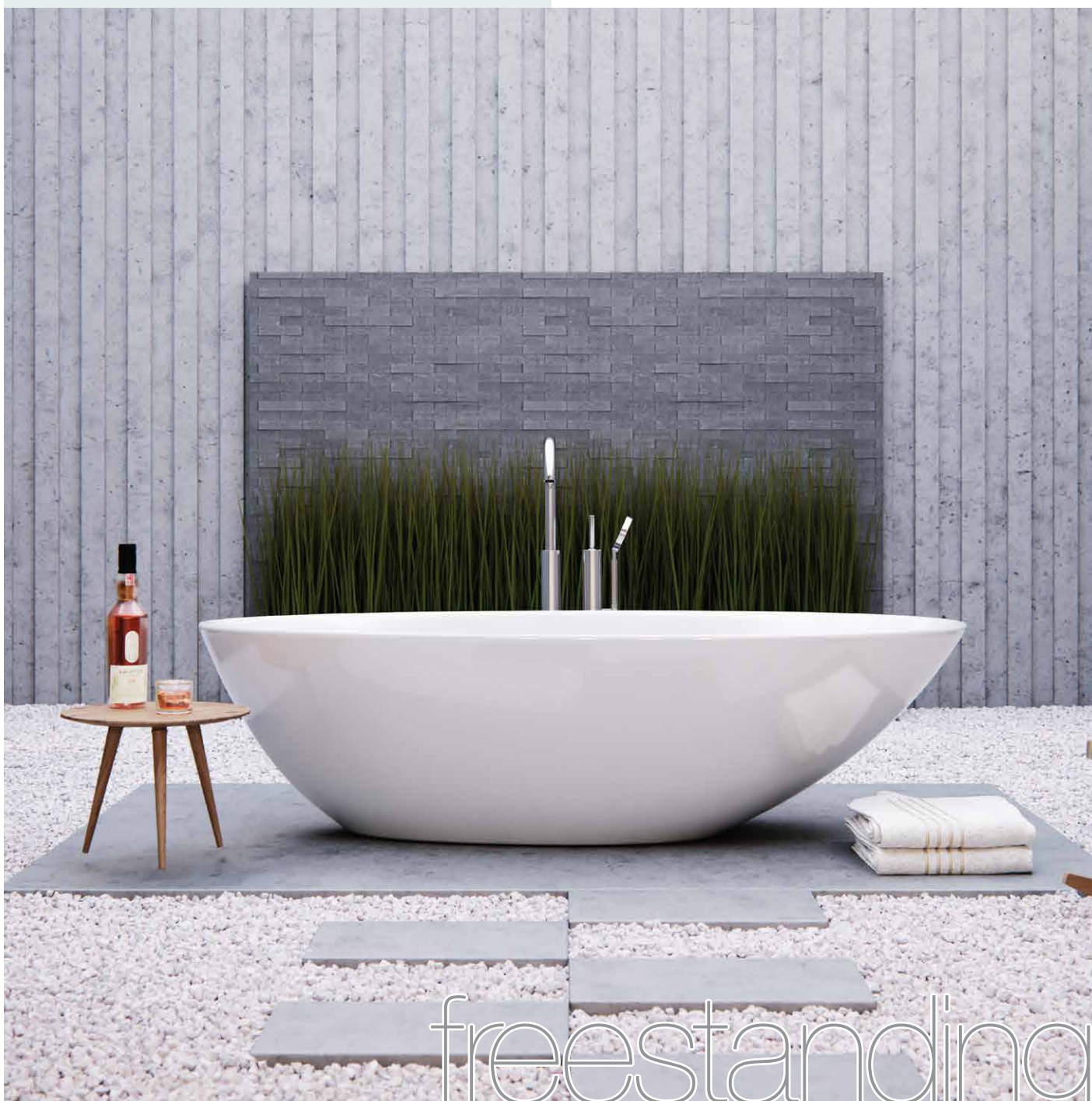
Specifications:	Size (in cm)	MRP
JWP-WHT-FONTE180CX (Combi System) • Slim Jets 80 MM • Water Jets- 6+4 • Air Jets- 12 • Water pump- 1 HP • Air Pump- 0.95 H • Overflow with Drain Pipe • White light • Electronic Control • Level Sensor Frame • Head rest	180x80x45	1,40,000
JWP-WHT-FONTE180WX (Water System) • Slim Jets 80 MM • Water Jets-6+4 • Water pump-1 HP • Overflow cum Filler • White light • Electronic Control • Level Sensor Frame • Head rest	180x80x45	1,19,000
JWA-WHT-FP180X (Front Panel)		7,650
JWA-WHT-SP80X (Side Panel)		4,750



Arc


NEW


Specifications:	Size (in cm)	MRP
JWP-WHT-ARC190CX (Combi System) • Material- PMMA Material • Reinforcement- PU Green • Super Slim Brass Water Jets- 8 • Micro Brass Air Jets-12 • Back Jets- 4 • 1.4 HP Water Pump • 0.9 HP Air Blower • Chromotherapy • Headrest • Overflow with Drain Pipe • Slim Suction Cover • Air Regulator • Level Sensor	190x90x47	1,63,000
JWP-WHT-ARC190WX (Water System) • Super Slim Brass Water Jets- 8 • Back Jets-4 • Chromotherapy • Water pump-1.4 HP • Overflow with Filler • Tuchpad Control • Disinfection Control • Level Sensor • Frame • Head rest	190x90x47	1,42,000
JWA-WHT-ARCFPX (Front Panel)		17,250
JWA-WHT-ARCSPX (Side Panel)		4,200





freestanding
bathtubs

freestanding bathtubs

	Alaska		
	Specifications:	Size (in cm)	MRP
	JBT-WHT-FSBT 177542X Freestanding Bathtub-In One piece forming skill • Lucite Acrylic sheet • Overflow & Waste	171.2x76x44/58	75,000

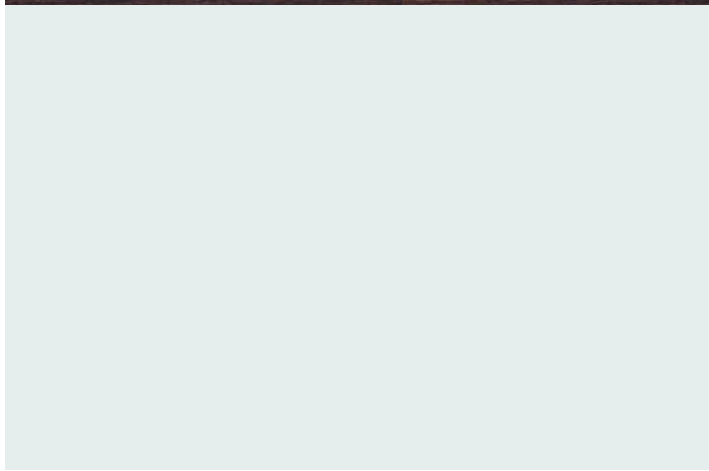
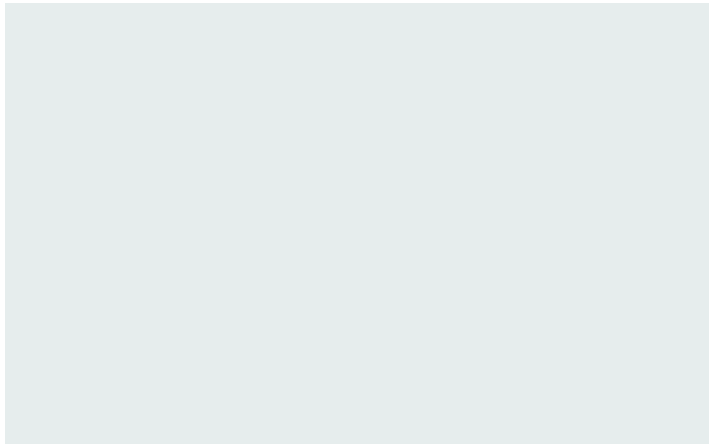
	Saipan		
	Specifications:	Size (in cm)	MRP
	JBT-WHT-FSBT 177544X Freestanding Bathtub • Lucite Acrylic sheet • Overflow & Waste	169x80x44.5/56.5	82,500

	Eggy		
	Specifications:	Size (in cm)	MRP
	JBT-WHT-FSBT PB278X Freestanding one-piece tub • Lucite Acrylic sheet • Overflow & Waste	170x85x45/58	82,500

	Julia		
	Specifications:	Size (in cm)	MRP
	JBT-WHT-FSBT 177840X Freestanding Bathtub • Lucite Acrylic sheet • Overflow & Waste	171.5x79.5x40/56	73,500

Note: Accessories shown in the whirlpools and bathtubs are not part of the products

	Queens		NEW
	Specifications:	Size (in cm)	MRP
	JBT-WHT-FSBTMAD1778: Free Standing Bath Tub with Chrome Over Flow, Waste & Legs JBT-WHT-FSBTMAD1778G: Free Standing Bath Tub with Gold Over Flow, Waste & Legs	170.2x78.7x43.4/61.5	85,000 95,000



bathtubs



Kubix Prime

Specifications:	Size (in cm)	MRP
JBT-WHT-KUBIXP180X (Built in Bath Tub)	180X110X47	29,000
JWA-WHT-FP180X (Front Panel)		9,150
JWA-WHT-SP110X (Side Panel)		6,000
JWA-CHR-132401 (Drain Pipe)* with overflow		10,000



Kubix

Specifications:	Size (in cm)	MRP
JBT-WHT-KUBIX180X Built In Bathtub	180x80x47	22,500
JWA-WHT-FP180X (Front Panel)		6,450
JWA-WHT-SP80X (Side Panel)		9,150
JWA-CHR-132201 (Drain Pipe)* with overflow	80 mm	9,600



Fonte

Specifications:	Size (in cm)	MRP
JBT-WHT-FONT180X Built In Bathtub	180x80x45	22,000
JWA-WHT-FP180X (Front Panel)		7,650
JWA-WHT-SP80X (Side Panel)		4,750
JWA-CHR-132201 (Drain Pipe)* with overflow	80 mm	9,600



Alive

Specifications:	Size (in cm)	MRP
JBT-WHT-ALIVE180X Built In Bathtub	180x80x47	22,500
JWA-WHT-FP180X (Front Panel)		9,150
JWA-WHT-SP80X (Side Panel)		6,450
JWA-CHR-132201 (Drain Pipe)* with overflow	80 mm	9,600



Fonte

Specifications:	Size (in cm)	MRP
JBT-WHT-FONT150X (Built in Bath Tub)	150X75X42	16,000
JWA-WHT-FONTE 150FPX (Front Panel)		6,000
JWA-WHT-SP75X (Side Panel)		4,500
JWA-CHR-DRNPIPE70 (Drain Pipe)* with overflow		5,000



Fonte

Specifications:	Size (in cm)	MRP
JBT-WHT-FONT170X (Built in Bath Tub)	170X75X42	18,000
JWA-WHT-FONTE 170FPX (Front Panel)		7,000
JWA-WHT-SP75X (Side Panel)		4,500
JWA-CHR-DRNPIPE70 (Drain Pipe)* with overflow		5,000



D'arc

Specifications:	Size (in cm)	MRP
JBT-WHT-DARC180X Built In Bathtub	180x110x47	32,000
JWA-WHT-FP180X (Front Panel)		9,150
JWA-WHT-SP110X (Side Panel)		6,150
JWA-CHR-132401 Drain Pipe For (D'arc & Fonte R)* with overflow	105 mm	10,000



Vignette Prime

Specifications:	Size (in cm)	MRP
JBT-WHT-VGNT190X Built In Bathtub	190x90x47	26,000
JWA-WHT-VGNTFPX (Front Panel)		9,150
JWA-WHT-VGNTSPX (Side Panel)		6,150
JWA-CHR-132201 (Drain Pipe)* with overflow	80 mm	9,600



Fonte-R

Specifications:	Size (in cm)	MRP
JBT-WHT-FONTR150X Built In Bathtub	150x150x47	39,000
JWA-CHR-132401 Drain Pipe For (D'arc & Fonte R)* with overflow	105 mm	10,000



Fusion

Specifications:	Size (in cm)	MRP
JBT-WHT-FUSN140X Fusion Built In Bathtub	140x140x45	23,000
JWA-WHT-FUSNCPX (Angular Panel)		11,900
JWA-CHR-132201 (Drain Pipe)* with overflow	80 mm	9,600



Arc

NEW

Specifications:	Size (in cm)	MRP
JBT-WHT-ARC190X Built-in Bathtub	190x90x47	35,000
JWA-WHT-ARCFPX (Front Panels)		17,250
JWA-WHT-ARCSPX (Side Panels)		4,200
JWA-CHR-132201: Drain Pipe with overflow & Filler		9,600



bathtub fillers



Florentine

Specifications:	Size (in cm)	MRP
FLR-CHR-5095N Bath Tub Filler Consisting Of 2 Control Cocks And One Spout, 20mm Cartridge Size		4,200



Florentine

Specifications:	Size (in cm)	MRP
FLR-CHR-5677 4-hole Thermostatic bath & shower mixer, deck mounted		31,000



Solo

Specifications:	Size (in cm)	MRP
SOL-CHR-6271 Bath Tub Mixer (Exposed Adjustable Legs) With Telephone Shower Arrangement & Crutch (without hand shower and Hose)		4,850



Solo

Specifications:	Size (in cm)	MRP
SOL-CHR-6095 Bath Tub Filler Consisting Of 2 Control Cocks And One Spout, 20mm Cartridge Size		4,350

*Mandatory accessories for bathtub **Option for whirlpools



Queen's

Specifications:	Size (in cm)	MRP
-----------------	--------------	-----

QQT-CHR-7095 Bath Tub Filler Consisting Of 2 Control Cocks And One Spout		5,100
---	--	-------



Queen's

Specifications:	Size (in cm)	MRP
-----------------	--------------	-----

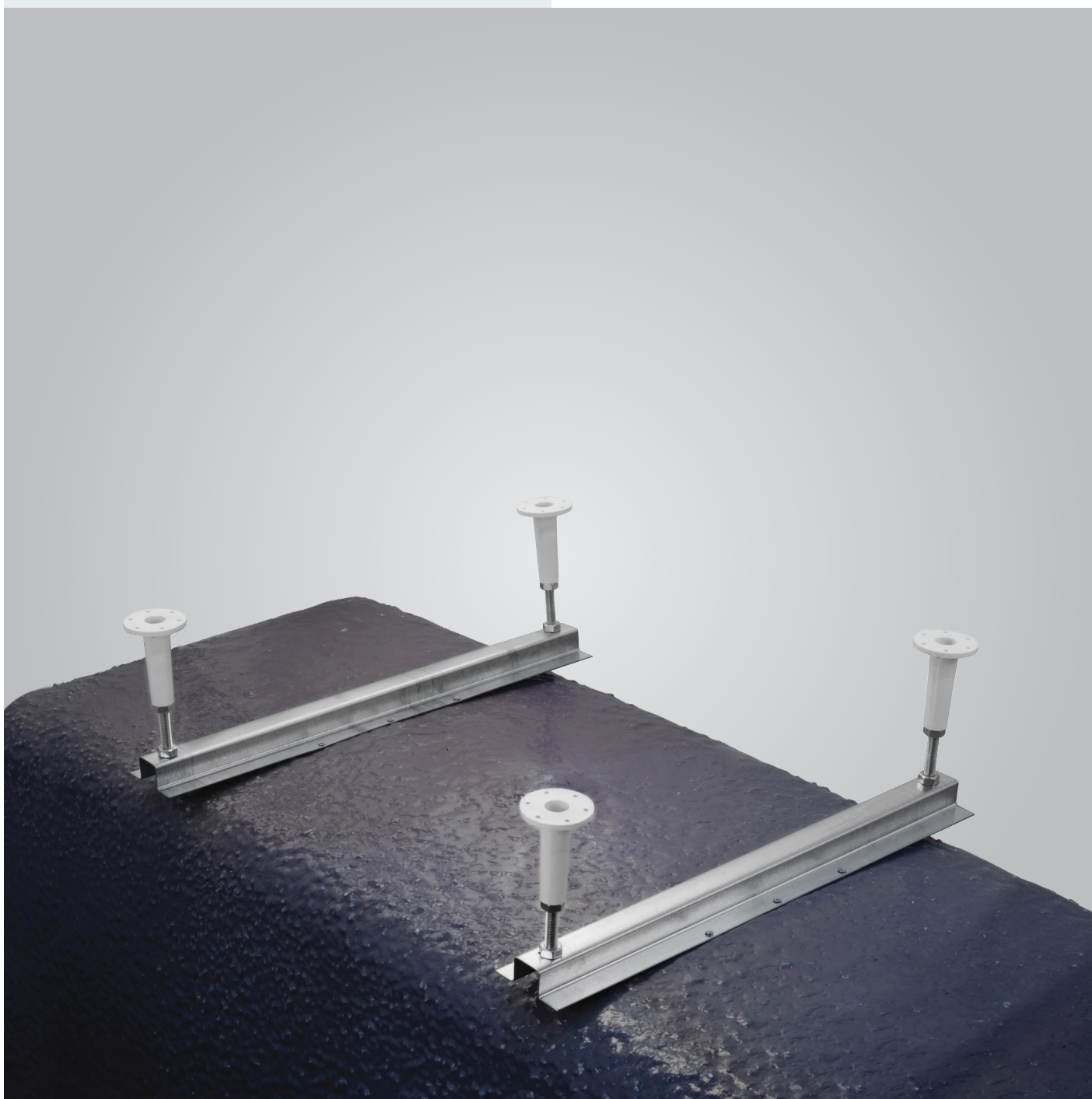
QQT-CHR-7277 4-Hole Bath Tub Mixer Consisting Of 2 No. Control Cocks, 1 Spout, 1 Telephone Shower With 12mm Dia. & 1.5m Long Flexible Tube		6,650
---	--	-------



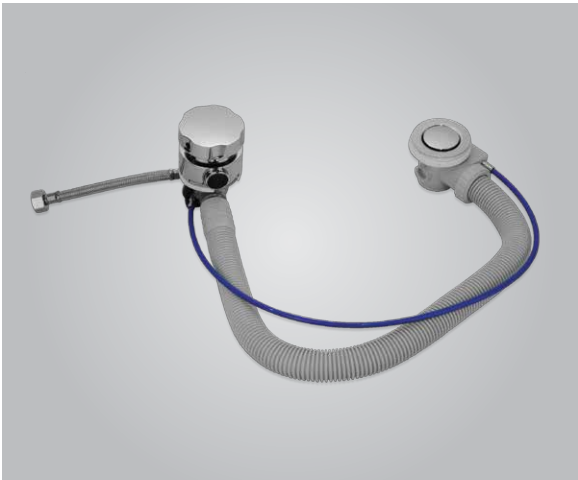
Continental

Specifications:	Size (in cm)	MRP
-----------------	--------------	-----

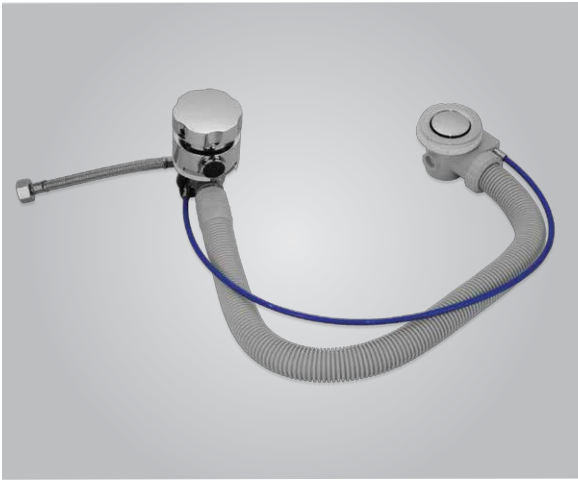
CON-CHR-271KN Bath Tub Mixer (Exposed Adjustable Legs) With Telephone Shower Arrangement & Crutch		3,950
--	--	-------



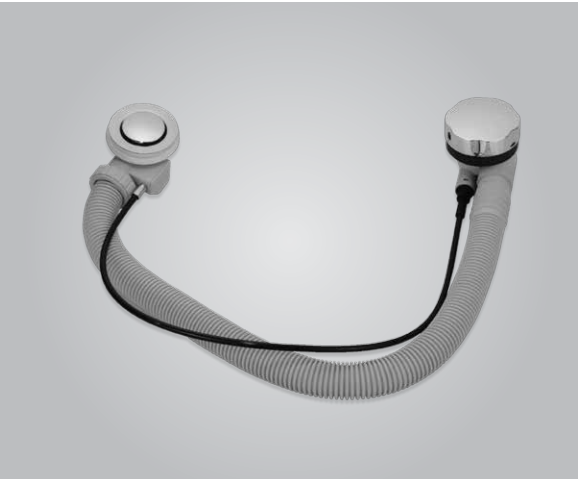
accessories



Drain Pipe		
Specifications:	Size (in cm)	MRP
JWA-CHR-132201 Drain Pipe No bracket with overflow & filler	80 mm	9,600



Drain Pipe		
Specifications:	Size (in cm)	MRP
JWA-CHR-132401 Drain Pipe For (Arc, D'Arc, Kubix Prime & Fonte R)* with overflow & filler	105 mm	10,000



Drain Pipe		
Specifications:	Size (in cm)	MRP
JWA-CHR-DRNPIPE70 Drain Pipe With Over Flow System 70 - 80 mm for Jaquar Whirlpool 150x75, 170x75, 180x80 & 190 X90		5,000



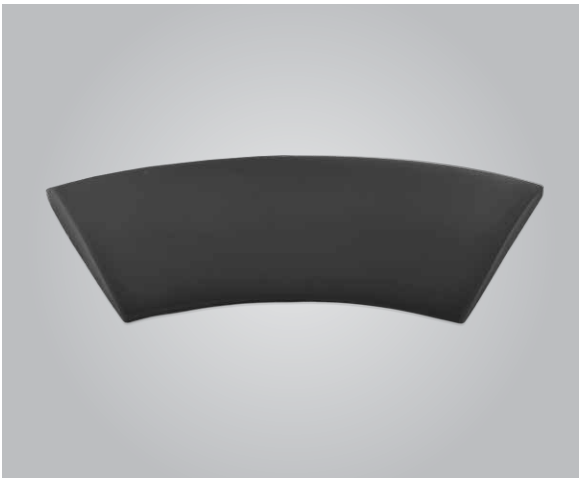
Drain Pipe		
Specifications:	Size (in cm)	MRP
JWA-CHR-DRNPIPE80 Drain Pipe 80MM		2,750

*Mandatory accessories for bathtub **Option for whirlpools



Drain Pipe

Specifications:	Size (in cm)	MRP
JWA-CHR-DRNPIPE100 Drain Pipe 100MM		2,750



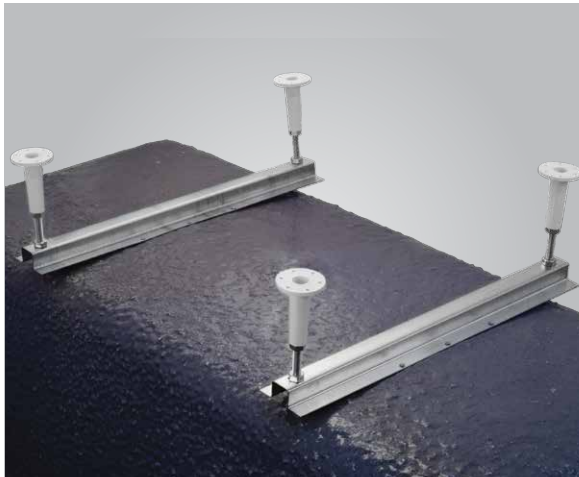
Headrest Sophi

Specifications:	Size (in cm)	MRP
JWA-BLK-HRSP120GAC06 Headrest Sophi For (Vignette/D'Arc/Fusion/Arc) Jaquar Whirlpool		5,000



Headrest Comfort

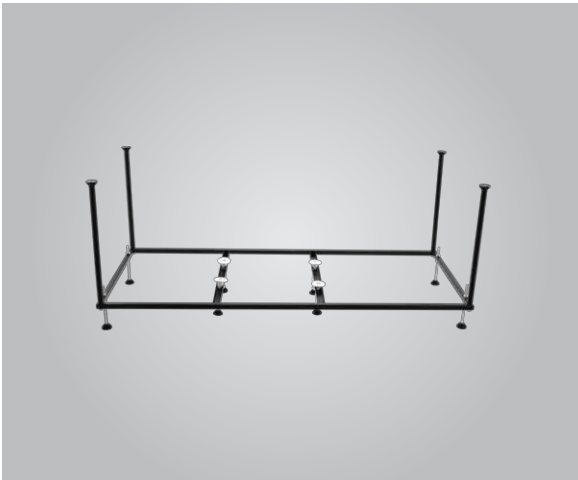
Specifications:	Size (in cm)	MRP
JWA-BLK-HRCP750GAC06 Headrest Comfort For Jaquar Whirlpool Kubix/Fonte/Alive/Fusion		7,100



Base Europa Kit for Bathtubs

Specifications:	Size (in cm)	MRP
IWA-CHR-ACC00510X		4,150

*Mandatory accessories for bathtub **Option for whirlpools



MS Frame

Specifications:	Size (in cm)	MRP
JWA-BLK-FRAME180X80: Powder Coated MS Frame Suitable for Kubix / Alive / Fonte Bathtub 180 X 80		5,900
JWA-BLK-FFONTE170X75: Powder Coated MS Frame Suitable for Fonte Bathtub 170 X 75		5,500
JWA-BLK-FFONTE150X75: Powder Coated MS Frame Suitable for Fonte Bathtub 150 X 75		5,500
JWA-BLK-FRAME180X110: Powder Coated MS Frame Suitable for Kubix Prime / D'Arc Bathtub 180 X 110		6,500
JWA-BLK-FVGNT190X90: Powder Coated MS Frame Suitable for Vignette Prime Bathtub 190 X 90		7,500
JWA-BLK-FFUSN140X140: Powder Coated MS Frame Suitable for Fusion Bathtub 140 X 140		7,500
JWA-BLK-FFONTR150: Powder Coated MS Frame Suitable for Fonte "R" Bathtub 150 X 150		8,500



spas

Spas are a wonderful way to relax and restore equilibrium. Jaquar's Spa models are technological marvels whose 'well being circuits' comprise of various seats and a common footrest in the centre. Each seat is strategically fitted with different types of massage jets in various positions, oriented to massage different parts of the body. By moving from one seat to the other, one can enjoy a complete and satisfying massage that stimulates and relaxes all parts of the body. Cushioned headrests, ergonomic seats and a host of high performance features make this the ultimate home spa experience.



Gemini

Specifications:	Size (in cm)	MRP
WSP-SLV-SPANF2001X Gemini Swim Spa (2S), with Stairs, panels Thermic Cover Features: • Perimeter Insulation • Thermo bond 4 Layer Shell Construction • Duraflex Plumbing • Thermoplastic Frame • Fibreglass Base • Underwater Flood Light • Backlit Drink Holders • Chromo Cascade Grab Bar • UV Total Jets - 9	210x110x74	4,25,000



Fisher 2

Specifications:	Size (in cm)	MRP
WSP-SLV-SPAFISHER (2S) Features: • Shell Color- Sterling Silver • PS Cabinet- Natural thermos clad • Grey SS Jets • Deluxe Lighting (16 Perimeter light, 2 Cabinet light) • UV Sanitation with Ozone combine • Timber support frame • SV2 Controller • ABS base • Head rest • Spa Cover • Steps 60 cm Total Jets - 16	165x165x72	5,25,000



Avante

Specifications:	Size (in cm)	MRP
ASP-SLV-SPAAVANTE Features: Controller • SV2 SPA Net Controller • Set & Forget Control System • Programmable Circulation • Wi-Fi enabled. Wireless Activation. Material • Thermo bond 4 layer shell construction • Extreme Heat Lock Insulation • Reinforced Foot Wall • Dura-flex Plumbing • Moulded Headrests • Foot Jets • Lockable Hard Cover • Ozone Filtration. • UV Filtration • Crystal Clear Water Pump • 2hp Jet Pump • 250W Circulation Pump Heater • 3 KW SPA Net Heater Total Jets - 16	187 x 128 x 74	5,60,000



Neon

Specifications:	Size (in cm)	MRP
WSP-SLV-SPA3S2060VX Neon Spa (3S), with Stairs, panels, Thermic Cover Features: • Extreme Heat Lock Insulation • Set & Forget Control System • Reinforced Foot Wall • Multi Layer Shell Construction • Pure zone Filtration • 2.5hp (5.2bhp) Jet Pump • Programmable Circulation Pump • Twin Accu-Pressure Seats • Moulded Headrests • Programmable Multi-Colour Spa Light • Backlit Water Cascade • Water Fall • Adjustable Aromatherapy • Laminar Jets • Lockable Hard Cover • Foot Jets • Illuminated Topside Controls • Spa Status Indicator Light • UV Total Jets - 54	206x169x82	7,75,000



Nirwana

Specifications:	Size (in cm)	MRP
WSP-SLV-SPANIRWANA (5S) Features: • Shell Color- Sterling Silver • 4 Layers Shell construction • Perimeter Insulation • Silent, Programable circulation pump • Spa net Control system • Duraflex plumbing • With 1.2 HP Water pump, With 1 air pump, With 1 Circulation pump. • PS Cabinet- Natural thermo clad • Black SS Jets • Deluxe Lighting (16 Perimeter light, 2 Cabinet light) • UV Sanitation with Ozone combine • Timber support frame • SV2 Controller • ABS base • Head rest • Spa Cover • Steps 60 cm Total Jets - 25	215x215x92	7,00,000



Mercury

Specifications:	Size (in cm)	MRP
WSP-SLV-SPA5S1990VX Mercury Spa (5S) with Stairs panels, Thermic Cover Features: • Extreme Heat Lock Insulation • Set & Forget Control System • Multi Layer Shell Construction • Reinforced Foot Wall • Pure zone Filtration • Programmable Circulation Pump • 2.5hp (5.2bhp) Jet Pump • Twin Accu-Pressure Seats • Programmable Multi-Colour Spa Light • Moulded Headrests • Backlit Water Cascade • Water Fall • Laminar Jets • Adjustable Aromatherapy • Lockable Hard Cover • Foot Jets • Illuminated Topside Controls • Spa Status Indicator Light • UV Total Jets - 49 vv	200x200x92	7,50,000



Xenon

Specifications:	Size (in cm)	MRP
WSP-SLV-SPA7S2340VX Xenon Spa (5S) with Stairs, panel, Thermic Cover Features: • Extreme Heat Lock Insulation • Set & Forget Control System • Pure zone Filtration • Multi Layer Shell Construction • Reinforced Foot Wall • 2.5hp (5.2bhp) Jet Pump • Programmable Circulation Pump • Twin Accu-Pressure Seats • Moulded Headrests • Kiddies Seats & Wine Cooler • Programmable Multi-Colour Spa Light • Foot Jets • Backlit Water Cascade & Water Fall • Adjustable Aromatherapy • Laminar Jets • Lockable Hard Cover • Illuminated Topside Controls • Spa Status Indicator Light • UV Total Jets - 43	234x234x92	8,50,000



Palladium

Specifications:	Size (in cm)	MRP
WSP-SLV-SPA8S3520VX Palladium Spa (9S) with Stairs, panel, Thermic Cover Features: • Extreme Heat Lock Insulation • Set & Forget Control System • Multi Layer Shell Construction • Reinforced Foot Wall • Pure zone Filtration • Programmable Circulation Pump • 2.5hp (5.2bhp) Jet Pump • Twin Accu-Pressure Seats & Twin Recliners • Moulded Headrests and Hand Grip • Programmable Multi-Colour Spa Light • Backlit Water Cascade • Adjustable Aromatherapy • Laminar Jets • Lockable Hard Cover • Foot Jets • Illuminated Topside Controls • Spa Status Indicator Light • UV Total Jets - 93	352x229x92	13,75,000



Aqua Swim

Specifications:	Size (in cm)	MRP
<p>WSP-SLV-AQUASWIM1300</p> <p>Features: Controller • SV2M SPA Controller • Digital Control Panel • Powerful and Efficient Pumps • Set & Forget Control System • Programmable Circulation Material • Thermo bond 4 layer shell construction • Extreme Heat Lock Insulation - Optional • Reinforced Foot Wall • Duraflex Plumbing • Lockable Hard Cover • Programmable Filtration Cycles • Paper Filters • Ozone Filtration. • UV Sterilizer Filtration System Pump • 2.5 HP Jet Pump – 2 units • 250W Programmable Circulation Pump</p>	449 x 231 x 130	12,75,000



Aquagym

Specifications:	Size (in cm)	MRP
<p>WSP-SLV-SPA4S449VX Aquagym Max Extreme (5S+) with Stairs, panel, Thermic Cover</p> <p>Features:</p> <ul style="list-style-type: none"> • Extreme Heat Lock Insulation • Set & Forget Control System • Multi Layer Shell Construction • Reinforced Foot Wall • Pure zone Filtration • Programmable Circulation Pump • 2.5x4 • Hydrotherapy Recliners • Water Spout • Dual Controllers • Programmable Multi-Colour Spa Light • Moulded Headrests and Hand Grip • Backlit Water Cascade • Laminar Jets • Adjustable Aromatherapy • Lockable Hard Cover • Foot Jets • Illuminated Topside Controls & Spa Status Indicator Light • UV <p>Total Jets - 86</p>	449x231x130	20,50,000



Hydrozone

Specifications:	Size (in cm)	MRP
<p>WSP-WHT-SPA5S590VX Hydrozone Swim Spa (5S+) with Stairs panel, Thermic Cover</p> <p>Features: • Extreme Heat Lock Insulation • Set & Forget Control System • Multi Layer Shell Construction • Reinforced Foot Wall • Pure zone Filtration • Programmable Circulation Pump • 2.5hp (5.2bhp) Jet Pump • Hydrotherapy Recliners • Water Spout • Dual Controllers • Programmable Multi-Colour Spa Light • Moulded Headrests • Backlit Water Cascade • Adjustable Aromatherapy • Laminar Jets • Lockable Hard Cover • Illuminated Topside Controls & Spa Status Indicator Light • UV</p> <p>Total Jets - 76</p>	593x230x130	24,00,000



saunas

A Sauna is a bathhouse or room, usually made of wood, which uses dry heat to induce perspiration, with steam being produced by pouring water on heated stones. Perspiration or sweating is one of the main ways our bodies get rid of the traces of hundreds of toxins that accumulate inside us from pesticides, drugs and man-made chemicals. 15 minutes in a Jaquar sauna can help us sweat as much as we might otherwise do over an entire day or more. And the benefits of this are many – ranging from relieving common cold symptoms to aiding in medical conditions like chronic fatigue, rheumatoid arthritis, musculoskeletal pain, and even cardio-vascular and skin conditions. Sauna sessions can also improve performance in endurance sport and help recuperation after childbirth.



Relaxo

Specifications:	Size (in cm)	MRP
JSA-NAW-DLX9011 1.75 kw Infrared heater Features: • High quality wood (Hemlock) craftsmanship • Comfortable backrest • High quality control system and control panel • Combination of Spectrum and black mica carbon heaters. • Accurate temperature sensor • Energy efficient • Music Centre- radio, bluetooth, USB, aux. • Chromotherapy • Pre-assembled board and built-in electrical elements	90x105.6x190	1,75,000



Kaya

Specifications:	Size (in cm)	MRP
JSA-NAW-MD3150 Sauna Cm-Hemlok-Kaya with lamber support backrest and laded bucket • Wood Finish-Hemlock • Stove heater 4.5 KW • Tempered glass 8 MM • On heater control panel • White light with cover • Chromo light • Radio • USB connector • MP3 player connector • Lumbar support backrest. • Thermometer and hygrometer.	150x110x210	2,20,000



Serene

Specifications:	Size (in cm)	MRP
JSA-NAW-S004175 Sauna Cm-Hemlok-Serene • Wood Finish-Hemlock • Stove heater 4.5 KW • Tempered glass 8 MM • On heater control panel • White light with cover • Chromo light • Radio • USB connector • MP3 player connector • Lumbar support backrest • Thermometer and hygrometer. • Bluetooth • Sandglass	175x120x210	2,60,000



Kubix

Specifications:	Size (in cm)	MRP
JSA-NAW-T16120 • Wood-Hemlock • Interior LED white light • Interior LED color light • Stove heater • 2pcs S-Shape backrest • Power - 4.5 KW • Bluetooth • Sandglass	175x120x210	2,95,000



steam solutions



Smart Vapour

Specifications:	Size (in cm)	MRP
JSG-BLK-PIUVAP5000ST Features: • 4.5 KW – Single phase connection • Push button start • Vapour Sealed Chromotherapy • Aroma therapy • Built in seating area • Quadrilateral Design • Inspired by straight lines • Auto Drain – 20 min. • Overheat protection • IP 44 Rating	60 x 33 x 42	1,25,000



MID

Specifications:	Size (in cm)	MRP
JSG-WHT-NMID40 Steam Generator Without Digital Control Panel- 4 Kw		63,000
JSG-WHT-NMID60 Steam Generator Without Digital Control Panel- 6 Kw		65,000
JSG-WHT-NMID90 Steam Generator Without Digital Control Panel- 9 Kw		75,000
JSG-WHT-NMID120 Steam Generator Without Digital Control Panel- 12 Kw		85,000
JSG-WHT-NMID150 Steam Generator Without Digital Control Panel- 15 Kw		90,000
JSG-WHT-NMID180 Steam Generator Without Digital Control Panel- 18 Kw		1,60,000
JSG-WHT-NMID225 Steam Generator Without Digital Control Panel- 22.5 Kw		1,70,000
JSG-WHT-NMID240 Steam Generator Without Digital Control Panel- 24 Kw		1,95,000



MID Control Plate Options

Specifications:	Size	MRP
JSG-WHT-CPSQUARE	103mm x 103mm	15,000
JSG-BLK-CPSQUARE	103mm x 103mm	15,000
JSG-WHT-CPROUND	Ø 89	17,500
JSG-BLK-CPROUND	Ø 89	17,500

• Touch button display – Elegant display with timer and temperature control
• IP67 rating for display – Water splash proof
• Temperature setting – 35 to 60° Celsius
• Auto water inlet – Water goes into tank automatically
• Auto drain – Water drains out automatically after steam shower which reduces scaling
• Auto power off – Customizable steam session with auto power off
• Stainless steel body – Rust-proof, durable and premium looking SS304 body



Noor Steam Module

Specifications:	Size (in cm)	MRP
NSC-CHR-TZ000BW40 Noor Steam Module (6 Kw)		1,47,000
NSC-CHR-MU000BW000X Noor Steam Module Multifunction Manual Steam Bath Wall Mounted Column(2.7kw)		87,500
NSC-CHR-MU000BB000X Built in Version Features : • Steam function - 6 K.W / 2.7 K.W. generator with on/off touch • Aroma dispenser with extractable drawer • Max Temperature of 45 Degree C • IPX4 Rating • Self Flushing enabling no calcium deposits - Auto clean • Safety cutoff		87,500



Archimede

Specifications:	Size (in cm)	MRP
GSB-WHT-TU000B1H5TX Archimede Steam Cabin (Square) Features : • Self standing box (Corner /Wall) • Shower tray and roof with Integrated Showerhead 300 MM • White painted aluminum shower column with 2 Integrated round jets • Shower rail • Thermostatic mixer with diverter • Hand shower and shelf • Chromo Lights • Speakers • Sliding door shower enclosure • 5 mm tempered glass. • Steam Function- 2.7 KW with Aroma Dispenser	100x100x210	2,50,000



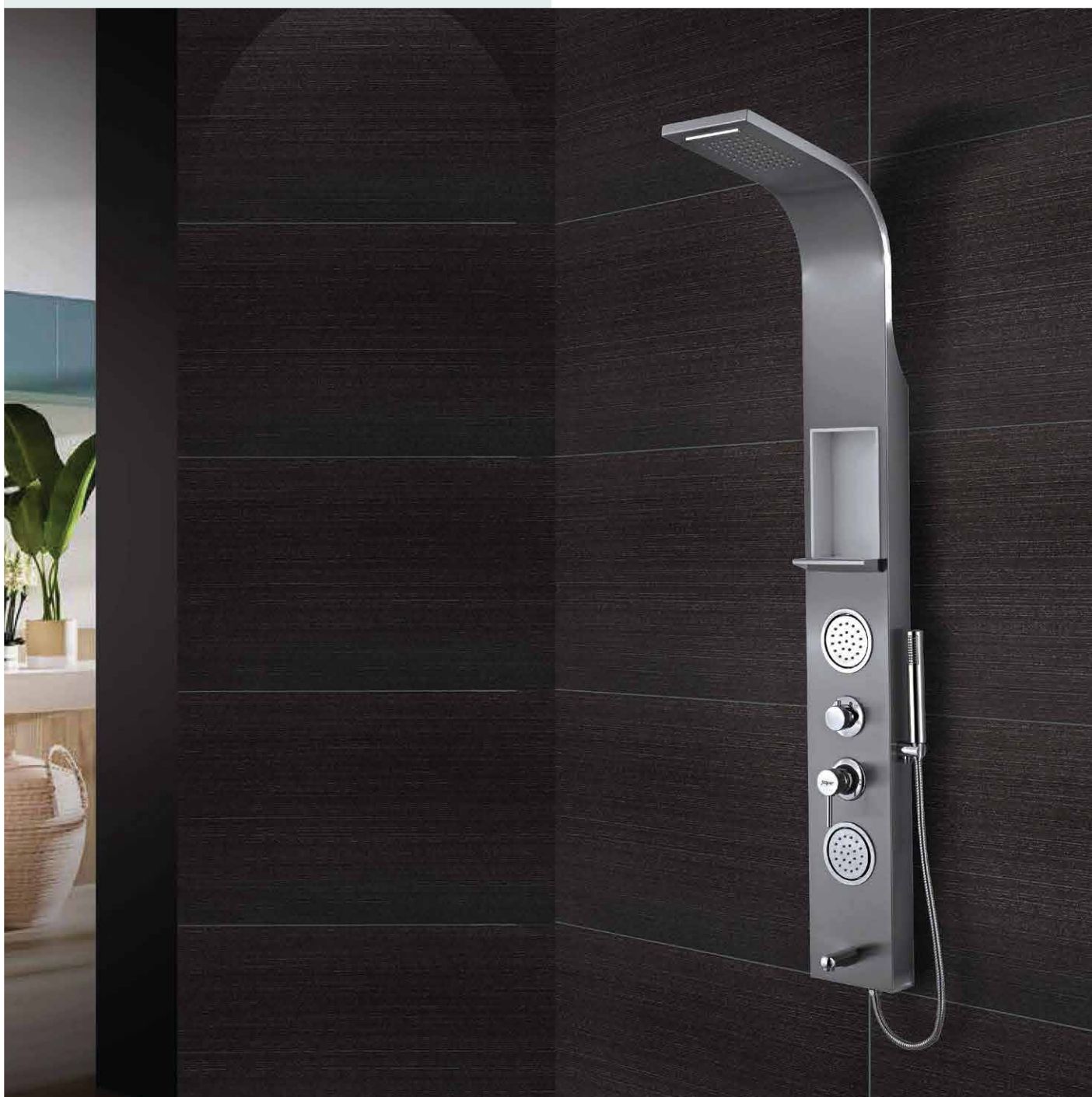
Archimede

Specifications:	Size (in cm)	MRP
GSB-WHT-UM000B1H5TX Archimede Steam Cabin (Corner) Features : • Corner Version - Shower, steam • Self standing box (Corner/Wall) • Shower tray and roof with Integrated Showerhead 300 MM • White painted aluminum shower column with 2 Integrated round jets • Shower rail • Thermostatic mixer with diverter • Hand shower and shelf • Chromotherapy • Speakers • Sliding door shower enclosure • 5 mm tempered glass. • Steam Function- 2.7 KW with Aroma Dispenser	100x100x210	2,50,000



Noor Steam

Specifications:	Size (in cm)	MRP
GSB-CHR-GNC20WT5CLX Multifunction Noor Steam Corner Left	120x120x204	4,95,000
GSB-CHR-GNC20WT5CRX Multifunction Noor Steam Corner Right	120x120x204	4,95,000
GSB-CHR-GNC010WT5CRX Multifunction Noor Steam Corner Right	120x100x204	4,85,000
GSB-CHR-GNC010WT5CLX Multifunction Noor Steam Corner Left	120x100x204	4,85,000
Features : • 3 Adjustable vertical jets • Steam bath (2,7 kW) and aroma dispenser with extractable drawer for essential oils • Chromo light • Stainless steel head shower 380x380 centered on shower area • Enclosure- 6 mm tempered clear glass • Profiles and column finish-brilliant		



shower panels

Jaquar's Shower Panels make showering much more convenient, since they are almost like shower stalls which fit even in a small bathroom. Jaquar shower panels are an easy way to increase the functionality of your existing shower area, as they can fit neatly on to the wall via their wall bars.



Curve

Specifications:	Size (in cm)	MRP
JPL-SSF-JA021	150x23	35,000
<ul style="list-style-type: none"> • Anodized Aluminium Structure • 3 Adjustable Vertical Jets (Round) • Integrated Shower Head (8" Round) • Thermostatic Mixer With Diverter • Hand Shower With Flexible Hose • Button Spout Connecting Hose. 		



Infinity Black

Specifications:	Size (in cm)	MRP
JPL-BLK-G0842JAX	150x20	24,500
<ul style="list-style-type: none"> • 2 Jets • Head Shower • Hand Shower • Black Mirror Finish 		



Infinity White

Specifications:	Size (in cm)	MRP
JPL-WHT-G0843JAX	150x20	26,000
<ul style="list-style-type: none"> • 2 Jets • Head Shower • Hand Shower • White Mirror Finish 		



Shinny

Specifications:	Size (in cm)	MRP
JPL-SSF-ST8896	160x20	39,000
<ul style="list-style-type: none"> • Stainless Steel Finish • Anti finger print • Movable ABS top shower • Brass waterfall • Movable ABS body massage jets • Chrome plated ABS hand shower • Brass spout • Brass faucet body with thermostat mixer • Multifunction water diverter for top shower, waterfall, hand shower body jets, spout • 40cm stainless steel braided hose • 1.5m stainless steel double locked flexible hoses • Cascade Shower 		



Selfy

Specifications:	Size (in cm)	MRP
JPL-SSF-ST88158B	160x20	40,000
<ul style="list-style-type: none"> • Anti Finger Print With Stainless Steel Finish • Inbuilt ABS Top shower with 60 nozzles + waterfall • Movable ABS body massage jets • Chrome plated ABS hand shower • Brass spout • Embedded shelf • Brass faucet body with thermostat mixer • Multifunction water diverter for top shower, waterfall, hand shower, body jets, spout • 40cm stainless steel braided hose • 1.5m stainless steel double locked flexible hoses 		



Glassy - White

Specifications:	Size (in cm)	MRP
JPL-WHT-ST86113	140x25	38,000
<ul style="list-style-type: none"> • White Tempered Glass With Special Surface • Body material: Tempered glass with glass special surface + PVC back • Moveable ABS top shower • Moveable ABS body massage jets • Chrome plated abs hand shower • Brass spout • Glass platform • Brass faucet body with thermostatic mixer • Multifunction water diverter for top shower, hand shower, body jets, spout • 40 cm Stainless steel braided hose • 1.5m stainless steel double locked flexible hoses 		



Blak

Specifications:	Size (in cm)	MRP
JPL-BLK-JA011	150x20	35,000
<ul style="list-style-type: none"> • Stainless Steel Structure • 3 Adjustable Vertical Jets (Square) • Integrated Shower Head (8" Square) • Thermostatic Mixer With Diverter • Hand Shower with Flexible Hose • Button Spout • Connecting Hose. 		



Glassy - Black

Specifications:	Size (in cm)	MRP
JPL-BLK-ST86112	140x25	38,000
<ul style="list-style-type: none"> • Black Tempered Glass With Special Surface • Body material: Tempered glass with special surface + PVC back • Moveable ABS top shower • Inbuilt ABS body top shower • Chrome plated ABS hand shower • Brass spout • Glass platform • Brass faucet body with thermostatic mixer • Multifunction water diverter for top shower, hand shower, body jets, spout • 40 cm Stainless steel braided hose • 1.5m stainless steel double locked flexible hoses 		



Curve Neo

NEW

Specifications:	Size (in cm)	MRP
JPL-WHT-TMCURVENE0	150x23	32,500
Specifications <ul style="list-style-type: none"> • Aluminum Body with dual tone (White front+Black sides) • Inbuilt abs top shower with 60 nozzles • Moveable brass body massage jets 4pcs(70mm) • ABS hand shower +abs holder • Pull up brass round spout • Brass faucet body with Thermostatic mixer • Side Handles • Individual water diverter for top shower, body jets,spout • 40cm stainless steel braided hose • 1.5m stainless steel double locked flexible hoses • Brass conector 		



My Home

Specifications:	Size (in cm)	MRP
JPL-SSF-SPMYHOME Shower Panel	160x20	13,900
Specifications <ul style="list-style-type: none"> • Material: Stainless Steel • Grade: 304 • Finish: Chrome Product Features <ul style="list-style-type: none"> • Quadrilateral Design • Inspired by straight lines • Single Lever Diverter • Movable Overhead Shower • Spout • Hand Shower (Optional) 		

JAQUAR GROUP
Global Head Quarters,
Plot No. 3, Sector-11, IMT Manesar, Gurgaon-122050
E-mail: Sales: support@jaquar.com, Customer Service: service@jaquar.com

ORIENTATION CENTRES:

AHMEDABAD: Ground Floor, Commerce House-4, B/S Shell Petrol Pump, Near Anand Nagar Cross Roads, 100 Ft. Road, Prahlad Nagar, Satellite, Ahmedabad.
E-mail: ahmedabad@jaquar.com

BANGALORE: No. 10, V.N. Street, Next to Hotel Ramada, Shivaji Nagar, Tasker Town, Bangalore-560051.
Fax: 22862518.
E-mail: bangalore@jaquar.com

BHOPAL: Shop No. 7, 3rd Floor, City Center, Above Lotus, 1 Press Complex, M. P. Nagar, Zone-1, Bhopal- 462011.
E-mail: bhopal@jaquar.com

BHUBANESWAR: Plot No. 853/1671, 2nd Floor, Jharpada, Cuttack Road, Bhubaneswar-751006.
E-mail: bhubaneswar@jaquar.com

CHANDIGARH: SCO-52, 53 Sector-17A, Opp. Park Plaza, Chandigarh-160022.
Fax: 2612755. E-mail: chandigarh@jaquar.com

CHENNAI: Ground Floor, KGN Towers, 62 Ethiraj Salai, Chennai-600105.
Fax: 42144235. E-mail: chennai@jaquar.com

COCHIN: No. 35/563, Opp. International Stadium, Palarivattom P.O., Cochin-682025. Fax: 2340887/88.
E-mail: cochin@jaquar.com

GUWAHATI: "Swagata Envision" Ground Floor, G.S.Road, Six-mile, Khanapara (Opp. Directorate Of Agriculture, Assam) Guwahati-781022
Email: guwahati@jaquar.com

HYDERABAD: Unit No. 202, Reliance Classic Banjara Hills, Road No.1, Hyderabad-500034. Fax: 23379595.
E-mail: hyderabad@jaquar.com

INDORE: 304 - 307, Darshan Mall, 15/2, Race Course Road, Above HSBC Bank, Indore.
E-mail: indore@jaquar.com

JAIPUR: Neelkanth, 1 Bhawani Singh Road, Opp. Nehru Sehkar Bhawan, C-Scheme, Jaipur-302 001.
E-mail: jaipur@jaquar.com

JAMMU: C/o Bonny Square, Near ViSHAI Mega Mart, National Highway, Bypass Road, Kunjwani, Jammu, J&K - 180010.
E-mail: jammu@jaquar.com

KOLKATA: 2nd Floor, 55, Chowringhee Road, Kolkata-700071.
E-mail: kolkata@jaquar.com

LUCKNOW: Ground Floor, ASHA Bhawan, 27/II A, Gokhle Marg, Lucknow.
E-mail: lucknow@jaquar.com

LUDHIANA: 2nd Floor, Lodhi Complex, Mall Road, Ludhiana.
E-mail: ludhiana@jaquar.com

MUMBAI: 101, 102, 103, 1st Floor, Kamla Spaces, Above Kohinoor Electronics, S.V. Road, Near Khira Nagar, Santacruz (W), Mumbai-400 054. Fax: 26613917.
E-mail: mumbai@jaquar.com

NAGPUR: Kala Bhavan, 103/A South Ambazari Road, Shradhanand Peth Square, Laxminagar, Nagpur-440022
E-mail: nagpur@jaquar.com

NEW DELHI: D-56, Defence Colony, New Delhi-110 024. Fax: 24636809.
E-mail: delhincr@jaquar.com

PUNE: DSK Gandharva Heights, 5th Floor, Office No.501, Near Hotel Pride Executive, Ganeshkhind Road, Shivajinagar, Pune-411005. Fax: 25513921.
E-mail: pune@jaquar.com

RAIPUR: M.K. Planet, Ring Road No. 1, New Rajendra Nagar, Raipur-492001.

SILIGURI: 1st Floor, M-Square, Opp. Hotel Sachitra, 2nd Mile, Sevoke Road, Siliguri-734002.
E-mail: siliguri@jaquar.com

SURAT: 23, Siddhi Shopping Centre, Nr. Agrasen Bhavan Char Rasta, City Light Road, Surat.
E-mail: surat@jaquar.com

AREA REPRESENTATIVES:

AGRA: 9359150880
AKOLA: 9823352288
AMRITSAR: 9815379722
AURANGABAD: 8308838837
BARODA: 9825036745
BHAGALPUR: 7070997690
BILASPUR: 9630095012
CALICUT: 9895006320
COIMBATORE: 9884874121
DEHRADUN: 9837145508
DHANBAD: 9234682208
DHARAMSHALA: 9816866697
FARIDABAD: 7290003387
GOA: 09552521255, 08380096835, 07722043848
GURGAON: 9711361408
GUWAHATI: 9207049049, 0361-2463051
GWALIOR: 9993097335
HISSAR: 8053966999
JABALPUR: 9981530765
JALANDHAR: 9815914466
JODHPUR: 9829076309
JHANSI: 9839101081
KANPUR: 9839101081
KARNAL: 9467648455

KOLHAPUR: 7722034848
LUCKNOW: 8009211122
MEERUT: 8755984321
MORADABAD: 9897616491
MUZAFFARPUR: 7870025300
NAGPUR: 9823072050
NASIK: 07045347116, 09167395440
NOIDA: 9953070353
PATNA: 9835036635
RAIPUR: 9893049275, 9630095014
RAJKOT: 9825036746, 9825036743
RANCHI: 9709122225
ROHTAK: 9779248104
SHIMLA: 9501075460
SOLAPUR: 9881066275
UDAIPUR: 9829026309
U.P. (WEST): 9837065190
UTTRAKHAND KUMAON: 9690055888, 7055065558
VARANASI: 9935166968, 7570003576
KATHMANDU: 9851043149, 9741126044



Orientation Centre - 33002233*

Customer Care - 18001216808 (Toll Free)

* Add nearest Orientation Centre city code before the number.

Jaquar has an ongoing policy of design, development and improvement and thus reserves the right to modify specification and prices without any prior notice.



WHY SETTLE FOR JUST A BATHROOM?

CREATE A COMPLETE WELLNESS ZONE AT HOME!

*Jaquar Syndicated Research Nielsen'13, Percept '16



Jaquar

WELLNESS

Water, air, heat and light can work wonders for your body, and your mind. Create a Complete Wellness Zone in your home and heal the harm inflicted on you everyday by high-stress city life. Come home to the soothing power of Hydromassage, Airpool jets, dry heat, cleansing steam, Chromotherapy lights and much, much more. All backed by the assurance of Jaquar, India's most trusted bath brand.*

WHIRLPOOLS | SPAS | SAUNAS | STEAM SOLUTIONS | SHOWER PANELS

Scan the QR code to view the brochures



Wellness catalogue



Wellness price list

Bathtubs | Whirlpools | Spas | Saunas
Steam Solutions | Shower Panels

www.jaquar.com