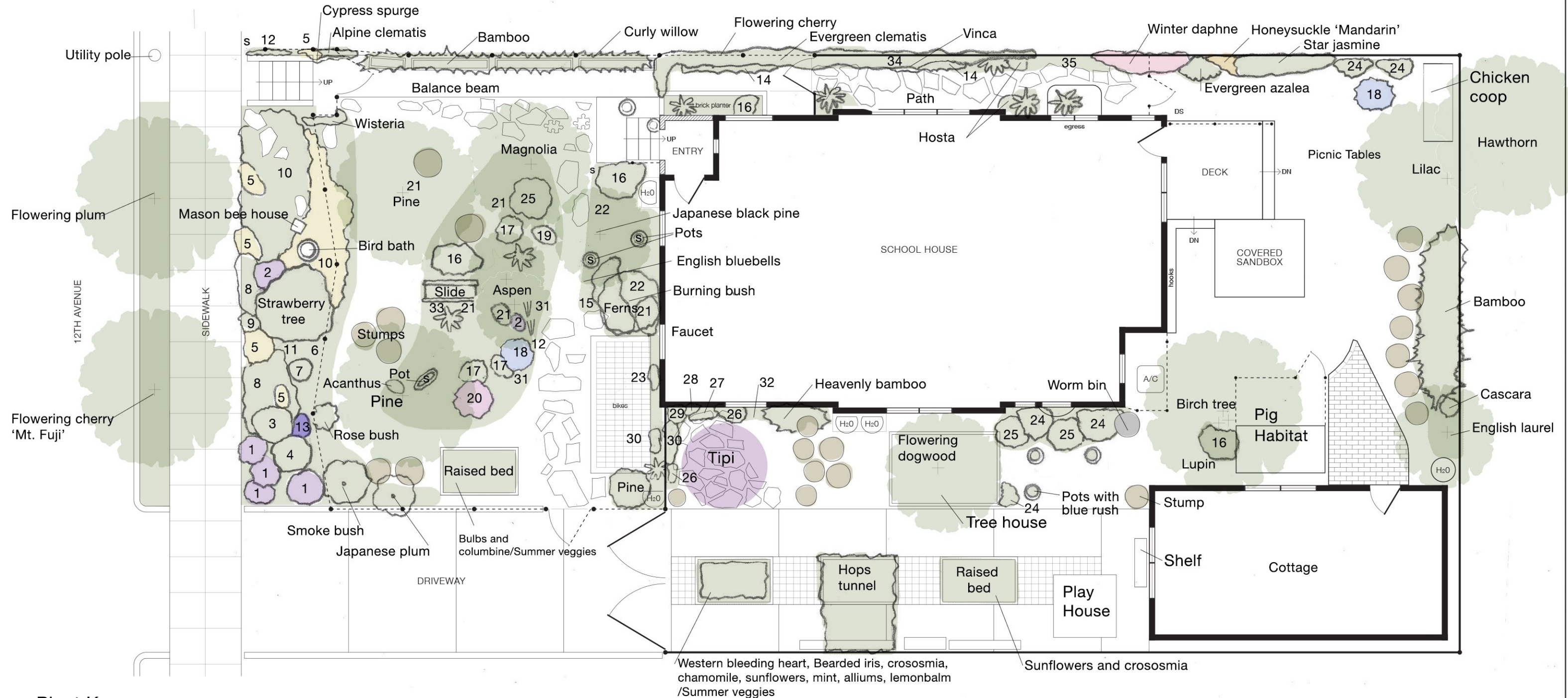




Owl and the Dove's outdoor environment is a GOLD certified Backyard Habitat (a program of the Audubon Society of Portland and Columbia Land Trust) We are dedicated to restoring and maintaining native wildlife habitats throughout or entire school property. We are committed to creating an environmentally healthy, therapeutic & restorative environment where we can connect the children in our care with the natural world!



**Plant Key**

- |                          |                              |                       |                           |                  |                           |                        |  |
|--------------------------|------------------------------|-----------------------|---------------------------|------------------|---------------------------|------------------------|--|
| 1. Spanish lavender      | 6. Bronze sedge              | 11. Mock orange       | 16. Spirea                | 21. Nootka rose  | 26. Blue elderberry       | 31. Lithodora          |  Common rush<br> Sword fern<br> Sedum |
| 2. English lavender      | 7. California bay tree       | 12. Hens and chicks   | 17. Evergreen huckleberry | 22. Wild ginger  | 27. Wild strawberry       | 32. Salvia             |  |
| 3. Sage, culinary        | 8. Candy tuft                | 13. Grape hyacinth    | 18. Rosemary              | 23. Kinnickinick | 28. Salmonberry           | 33. Oval leaf viburnum |  |
| 4. Wild lilac 'Victoria' | 9. Crocus                    | 14. Black mondo grass | 19. Douglas iris          | 24. Ninebark     | 29. Red flowering currant | 34. Japanese spurge    |  |
| 5. Daffodill             | 10. Creeping St. John's wort | 15. Spiral rush       | 20. Variegated weigela    | 25. Snowberry    | 30. Oregon grape          | 35. Labrador violet    |  |

# Owl and The Dove School Garden