

# UWHARRIE MOTORSPORTS PARK



Uwharrie Motorsports Park is not just about membership options. We will be a hub of activity, hosting a wide variety of events throughout the year, from public drive days to charity events. Our public amenities, including dining options, walking trails, and a dog park, will ensure that there's something for everyone.

We look forward to uniting with our Moore County community and beyond to deliver a premier racing and motorsports experience for all!

## THE STATS

The following are summary estimated economic and fiscal impact highlights of the proposed Autoport development.

Direct, Indirect, and Induced Annual Economic Impact

**\$115,382,500**

Construction Economic Impact ( one time effect)

**\$216,000,000**

Direct, Indirect and Induced Jobs

**284**

Total Annual Ad Valorem Taxes

**\$464,479**

Total Annual Sales Tax

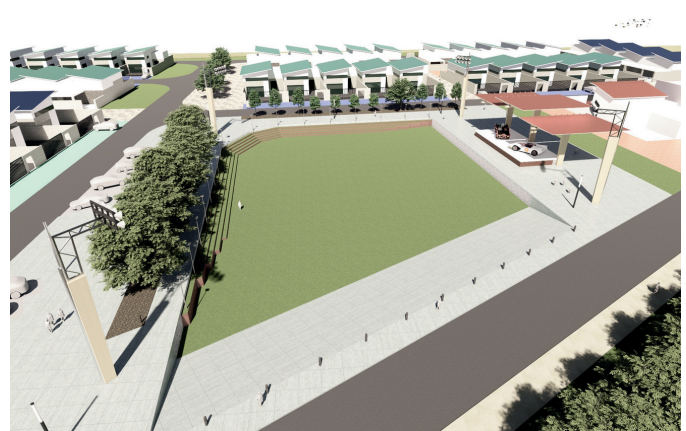
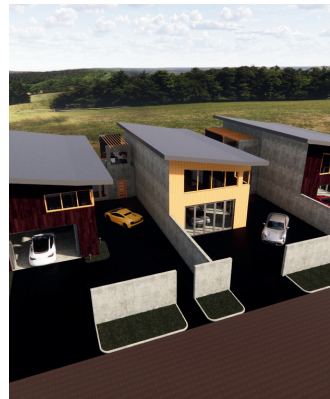
**\$450,975**

Total Annual State and Local Fiscal Impact

**\$2,167,471**

TOTAL ANNUAL ECONOMIC AND FISCAL IMPACT

**\$117,549,971**



## About the Study

For over 20 years, Sanford Holshouser Economic Development Consulting, LLC (SHEDC) has been known as a highly respected economic development consulting firm.

Our team of innovative, accomplished economic development professionals collectively possess over 250 years of practitioner-based experience providing services in many states, and in other countries, as well. Every partner has "frontline" experience in running successful economic development programs at local, regional and state levels. This experience has proven very beneficial to our clients.

SHDEC partnered with Henry Lowenstein, Ph.D. of Research and Consulting Services, LLC (RCS). Dr. Lowenstein has a long-distinguished career in academics, business, and government with extensive experience in calculating estimate impacts for several significant economic development projects in North and South Carolina.

