



# WELCOME

Take a look at some of the many ways that you can create a customized storage space.

The process is easy from start to finish. So, sit back and let our team do the hard work so that you can enjoy your finished space.

Page 04

About Us

Page 06

Reach-In

Page 12

Walk-In

Page 16

Entry

Page 18

Pantry

Page 20

Colors

Page 21 - 23

Hardware & Styles





# Creating Your **DREAM SPACE**

With exceptional products, you're sure to find a design that fits your needs.



Custom Solutions



3D View of Your Space



High Quality Materials





COLOR  
Slate



FRONT STYLE  
Eased Edge



HARDWARE COLOR  
Matte Nickel

#### FEATURES & ACCESSORIES

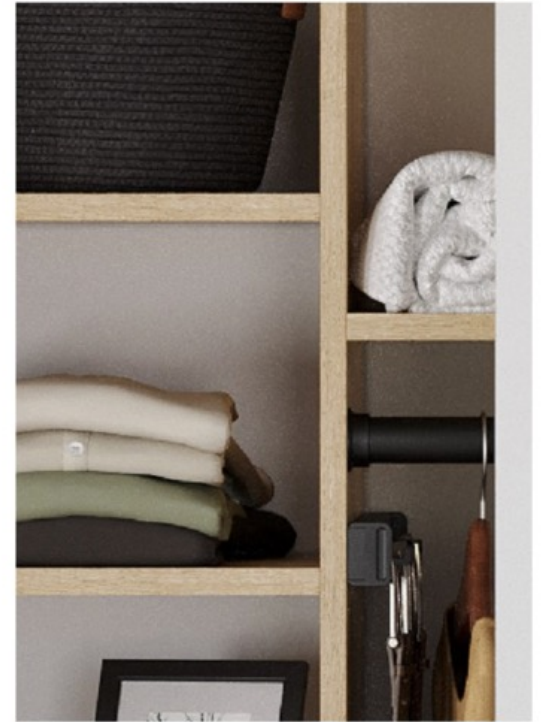
- Belt Rack
- Soft Close Drawers
- Valet Rod
- Adjustable Shelves
- Adjustable Shoe Shelves
- Wardrobe Rods



REACH-IN CLOSET



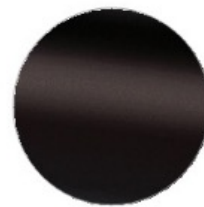




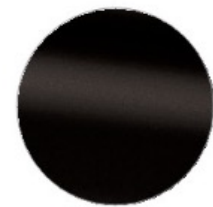
**COLOR**  
Beach



**FRONT STYLE**  
Eased Edge



**KNOB COLOR**  
Oil Rubbed Bronze



**HARDWARE COLOR**  
Matte Black

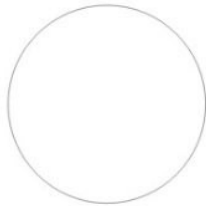
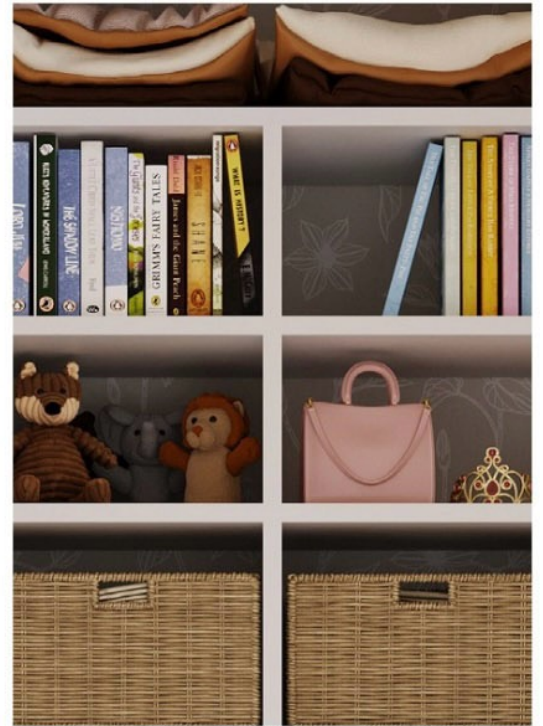
#### FEATURES & ACCESSORIES

- Slanted Shoe Shelves
- Valet Rod
- Adjustable Shelves
- Belt Rack
- Soft Close Drawers

REACH-IN CLOSET



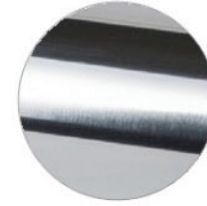




COLOR  
White



FRONT STYLE  
Molded

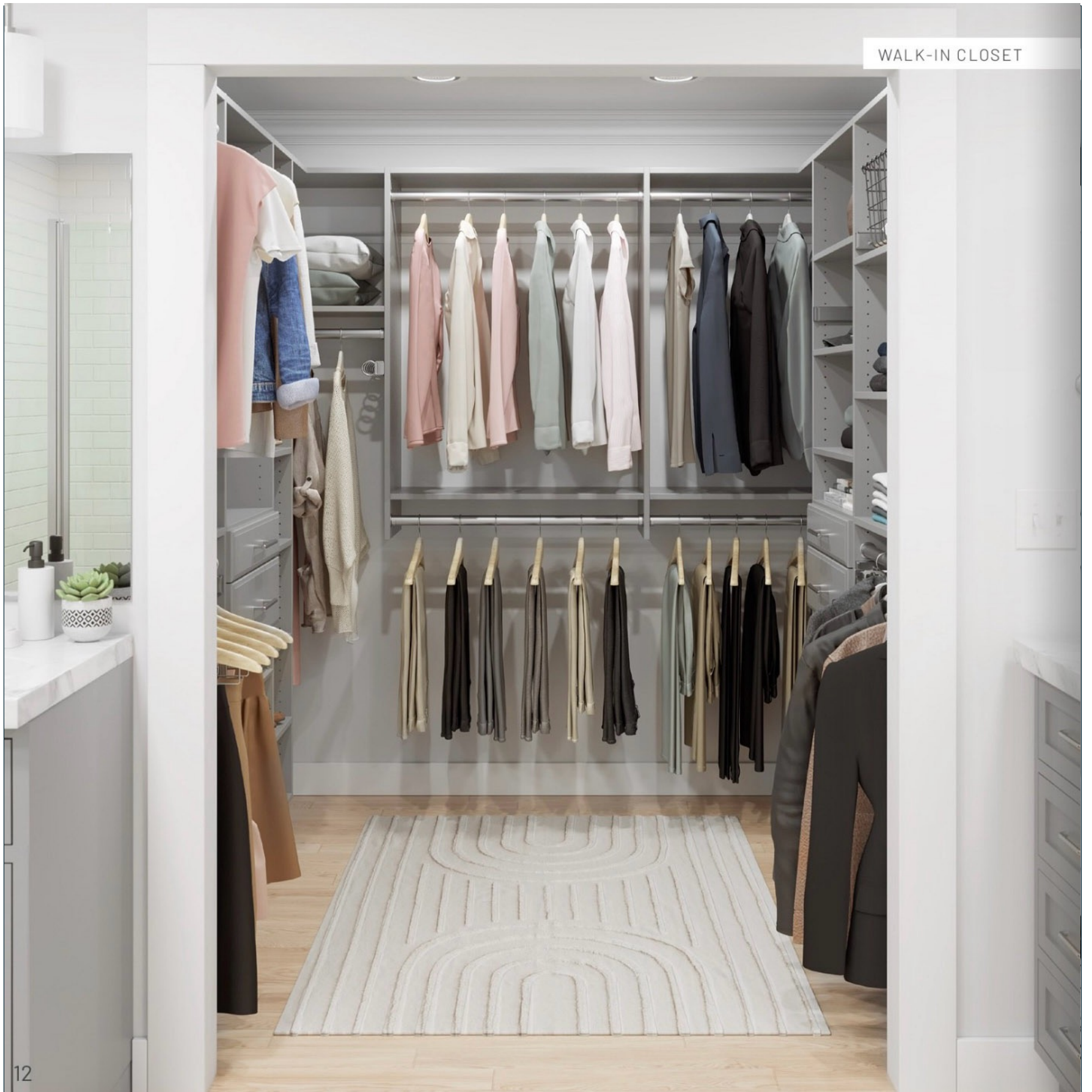


HARDWARE COLOR  
Polished Chrome

## FEATURES & ACCESSORIES

- Baskets
- Valet Rod
- Adjustable Shelves
- Cubbies
- Soft Close Drawers







COLOR  
Slate



FRONT STYLE  
Molded



HARDWARE COLOR  
Matte Nickel

## FEATURES & ACCESSORIES

- Belt Rack
- Tie Rack

- Scarf Holder
- Valet Rod

- Slanted Shoe Shelves
- Adjustable Shelves









COLOR  
White River



FRONT STYLE  
Modern Raised



HARDWARE COLOR  
Oil Rubbed Bronze

## FEATURES & ACCESSORIES

- Belt Rack
- Tie Rack

- Valet Rod
- Pant Rack

- Pull Out Hamper







COLOR  
Twilight



BENCH COLOR  
Beach



FRONT STYLE  
Modern Raised



HARDWARE COLOR  
Matte Nickel

## FEATURES & ACCESSORIES

- Hook Board
- Bench Seating

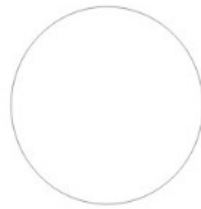
- Base Molding
- Cabinet Doors

- Adjustable Shelves



PANTRY





COLOR  
White



HARDWARE COLOR  
Oil Rubbed Bronze

## FEATURES & ACCESSORIES

- Baskets
- Cubbies

- Scoop Front Beech Drawers
- Toe Kick

- Base Molding
- Adjustable Shelves

# COLORS

A variety of colors to complement any home and style.

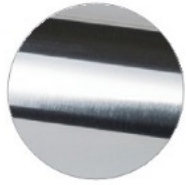




# HARDWARE

Coordinate hardware colors to complement your style.

## HARDWARE COLORS



Polished Chrome



Matte Nickel



Oil Rubbed Bronze



Matte Black



White

## HANDLE & KNOB STYLES



Terraced Square  
*Oil Rubbed Bronze*



Terraced Square  
*Matte Nickel*



Terraced Square  
*Polished Chrome*



Arc Rectangle  
*Matte Black*



Arc Rectangle  
*Matte Nickel*



Arc Rectangle  
*Polished Chrome*



Round  
*Oil Rubbed Bronze*



Round  
*Matte Nickel*



Round  
*Polished Chrome*



Luxe Cube  
*Oil Rubbed Bronze*



Luxe Cube  
*Matte Nickel*



Luxe Cube  
*Polished Chrome*



Studio Bar  
*Oil Rubbed Bronze*



Studio Bar  
*Matte Nickel*



Studio Bar  
*Polished Chrome*



Prestige Traditional  
*Oil Rubbed Bronze*



Prestige Traditional  
*Matte Nickel*



Prestige Traditional  
*Polished Chrome*



Modern Rectangle  
*Matte Black*



Modern Rectangle  
*Matte Nickel*



Modern Rectangle  
*Polished Chrome*

*\*Although we make every effort to ensure color accuracy, your final product may not be an exact match to the image displayed.*

# FRONT STYLES

Additional styles to match your homes current style.



Eased Edge  
White River



Molded  
Slate



Modern Raised  
Beach



Eased Edge  
White River



Molded  
Slate



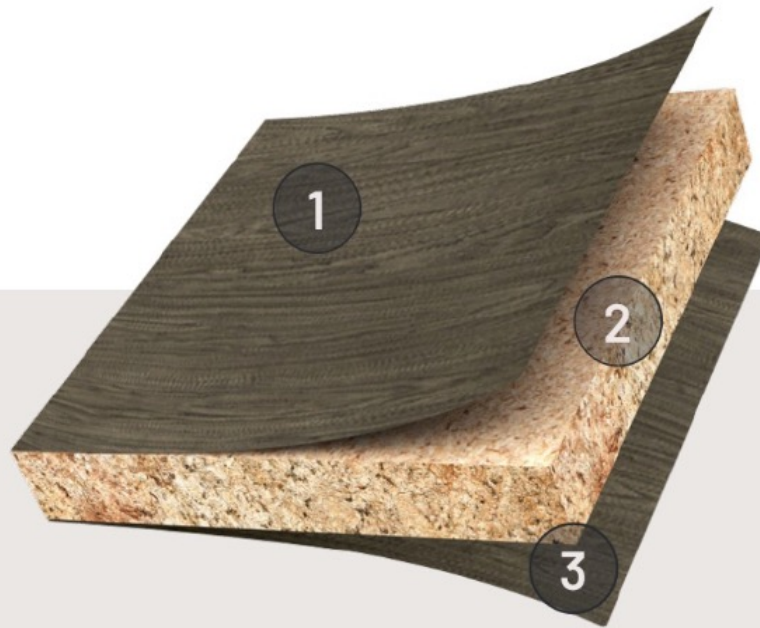
Modern Raised  
Beach

*\*Although we make every effort to ensure color accuracy, your final product may not be an exact match to the image displayed.*



# QUALITY + DURABILITY

The material used to make the panels and shelves is furniture grade composite board which gives it the strength needed for quality construction.



1

This decorative laminate layer is available in a variety of colors.

2

High density composite panels are CARB 2 compliant and meet LEED green building standards. Our substrates are made from wood sourced from certified, recycled, recovered and/or controlled sources.

3

Our panels are custom-cut using 3/4" thick TFL, which consists of laminate, fused to a high-density composite panel (heat and pressure fuses the decorative layers to the core, actually becoming part of the panel itself).

Contact your designer to  
learn more about these  
custom solutions.

Thank you

Product and finishes availability may  
vary based on demand and manufacturing capacity.  
All orders confirmed in advance.