

[Skip Navigation](#)

[HOME](#) [SITEMAP](#) [CONTACT US](#) [TRANSLATE](#)



Polk County

OFFICE OF EMERGENCY MANAGEMENT

Keeping Polk County Ready

Call Us Now
(936) 327-6826

Toggle main menu visibility

- [ABOUT US](#)
- [OUR SERVICES](#)
- [ALERTS](#)
- [NEWS](#)
- [INFORMATION](#)
- [COUNTY WEB MAP](#)
- [PARTNERS](#)
- [CONTACT US](#)
- [AREA RESOURCES](#)

Recovery Programs

Long Term Recovery
936-327-POLK



CENTER OF HOPE

Polk County, Texas

Center of Hope
Disaster Response
600 S. Washington
936-327-7634

Extended Hours for Flood Survivors
7 Days a Week 8a-5p
Will be distributing
Food, Water
Clothing (coming soon-stay tuned)
Flood clean-up kits
Other services as needed



Polk County Recovers
Long Term Recovery
602 E. Church St

Please call 936-933-2735
For assistance with iStat
Damage reports and cleanup assistance requests. It is very important to report your damages with pictures attached in the event a Federal Declaration is met.

Debris Removal Guidelines for Private Residential Properties

In efforts to expedite the debris removal process, please follow these rules.

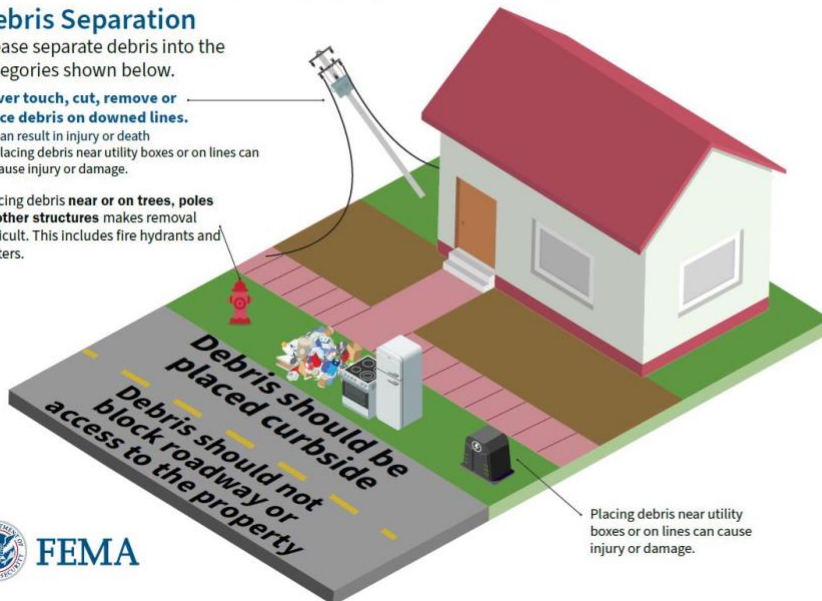
Debris Separation

Please separate debris into the categories shown below.

Never touch, cut, remove or place debris on downed lines.

- Can result in injury or death
- Placing debris near utility boxes or on lines can cause injury or damage.

Placing debris **near or on trees, poles or other structures** makes removal difficult. This includes fire hydrants and meters.



Check with your local office of emergency management for more information on debris removal.



Large Appliances
Refrigerator, washer/dryer, air conditioner, stove, water heater, dishwasher. Do not leave doors unsealed or unsecured.



Construction Debris
Building materials, drywall, lumber, carpet, furniture, plumbing.



Vegetative Debris
Tree branches, leaves, logs, plants.



Hazardous Waste
Oil, battery, pesticide, paint, cleaning supplies.



Electronics
Television, computer, stereo, phone, DVD player.

Resources available at
polkcountyrecovers.org

[iSTAT Damage Surveys \(texas.gov\)](https://texas.gov)

REPORTING DAMAGES TO YOUR HOME AFTER A DISASTER IS IMPORTANT

DAMAGE.TDEM.TEXAS.GOV

If a disaster happens, register your damages as quickly as possible
by using this self-reporting survey called ISTAT

*The information you provide alerts local officials of your damages and helps determine if
our county receives federal funding and other resources to assist with recovery*



Stay connected to official
Polk County information to
assist with disaster
preparedness and recovery.
Follow us on Facebook:

Polk County Emergency
Management, Texas

Polk County Recovers



Use this QR code to register
your home damages or visit
DAMAGE.TDEM.TEXAS.GOV

Temporary Exemption for Disaster Damage

If your property has sustained damage you may qualify for a temporary disaster exemption for your 2024 property tax. The temporary disaster exemption allows for a reduction in appraised value prorated for the remainder of the year. Please follow the link below or scan the QR code for more information.

www.polkcad.org



Item/Food/Monetary

For immediate items, food or monetary needs, please contact these local nonprofits:

Case Management

For case management, please dial 211 and enter your information or visit the website of:

Home Repair

For major home repairs/replacement, please visit:

Relocation

To relocate out of the flood zone, please visit:

[Center of Hope](#)

[Mannafest](#)

[Campaign 300](#)

[Catholic Charities](#)

[Homeowners Assistance Program](#)

[Homeowner Reimbursement Program](#)

[GLO Buyouts & Acquisitions Program](#)



Polk County
OFFICE OF EMERGENCY MANAGEMENT
Keeping Polk County Ready

REPORTING DAMAGES TO YOUR HOME AFTER A DISASTER IS IMPORTANT

DAMAGE.TDEM.TEXAS.GOV

If a disaster happens, register your damages as quickly as possible
by using this self-reporting survey called ISTAT

*The information you provide alerts local officials of your damages and helps determine if
our county receives federal funding and other resources to assist with recovery*



Stay connected to official
Polk County information to
assist with disaster
preparedness and recovery.
Follow us on Facebook:

Polk County Emergency
Management, Texas

Polk County Recovers



Use this QR code to register
your home damages or visit
DAMAGE.TDEM.TEXAS.GOV

Contact Us

602 E. Church St Ste. 119

Livingston, TX 77351

936-933-2735

polkcountyrecovers@gmail.com