

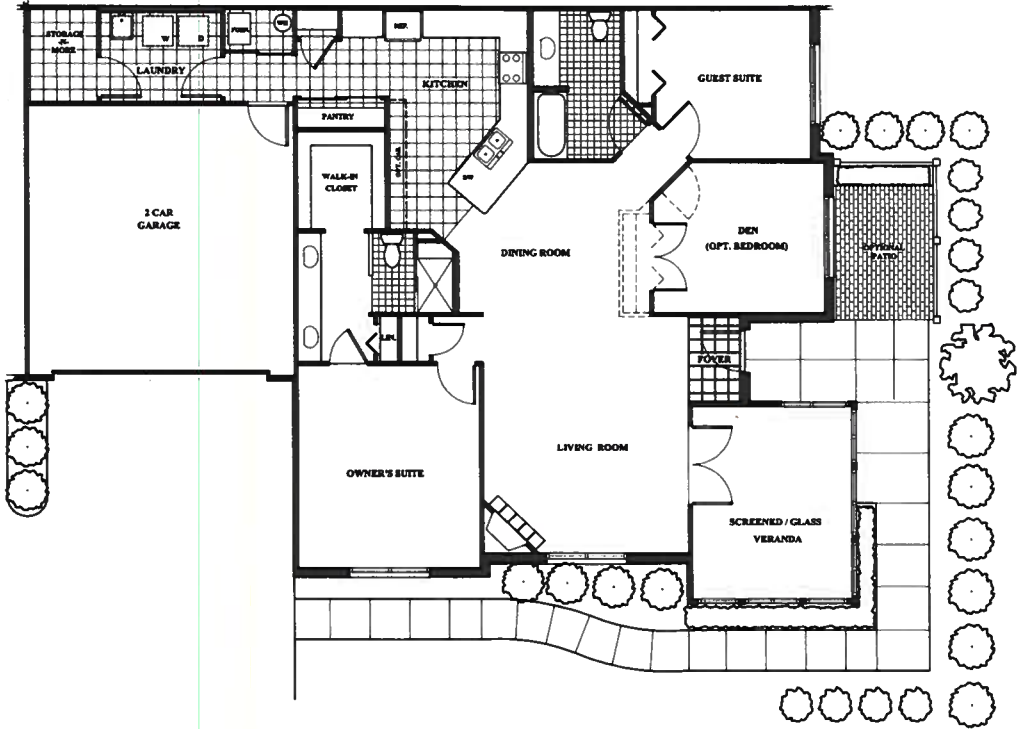
# The Canterbury

1,880 sq ft

3 BEDROOMS OR 2 BEDROOMS AND A DEN

2 BATHS

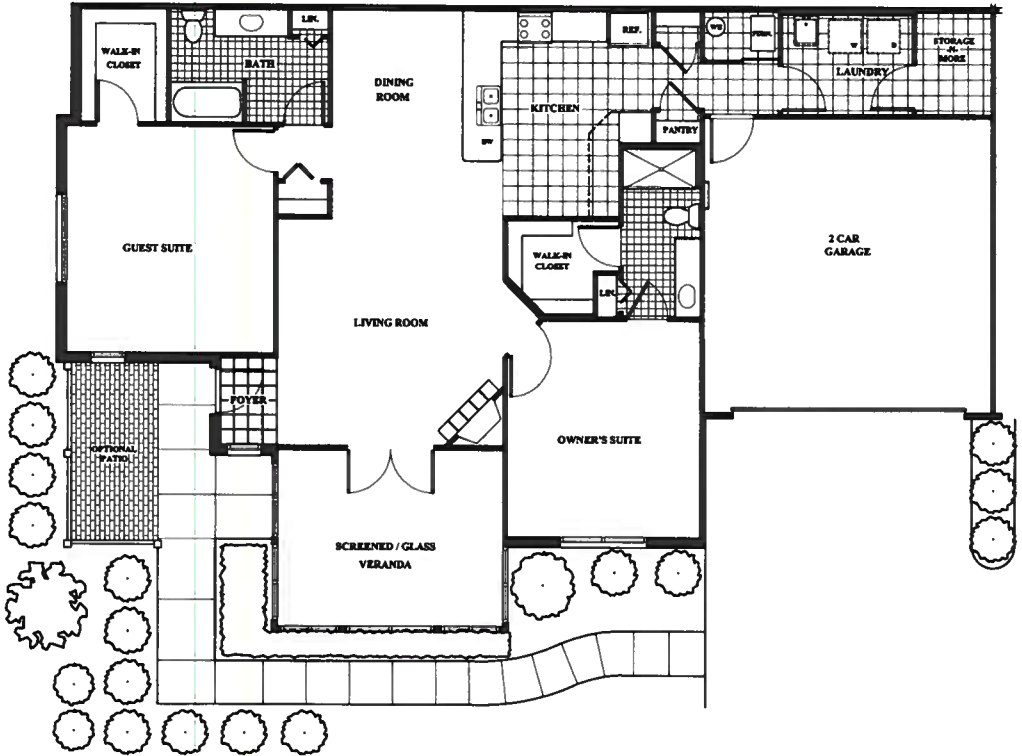
2 CAR GARAGE



# The Abby

- 2 BEDROOM
- 2 BATHS
- 2 CAR GARAGE

1,717 sq ft



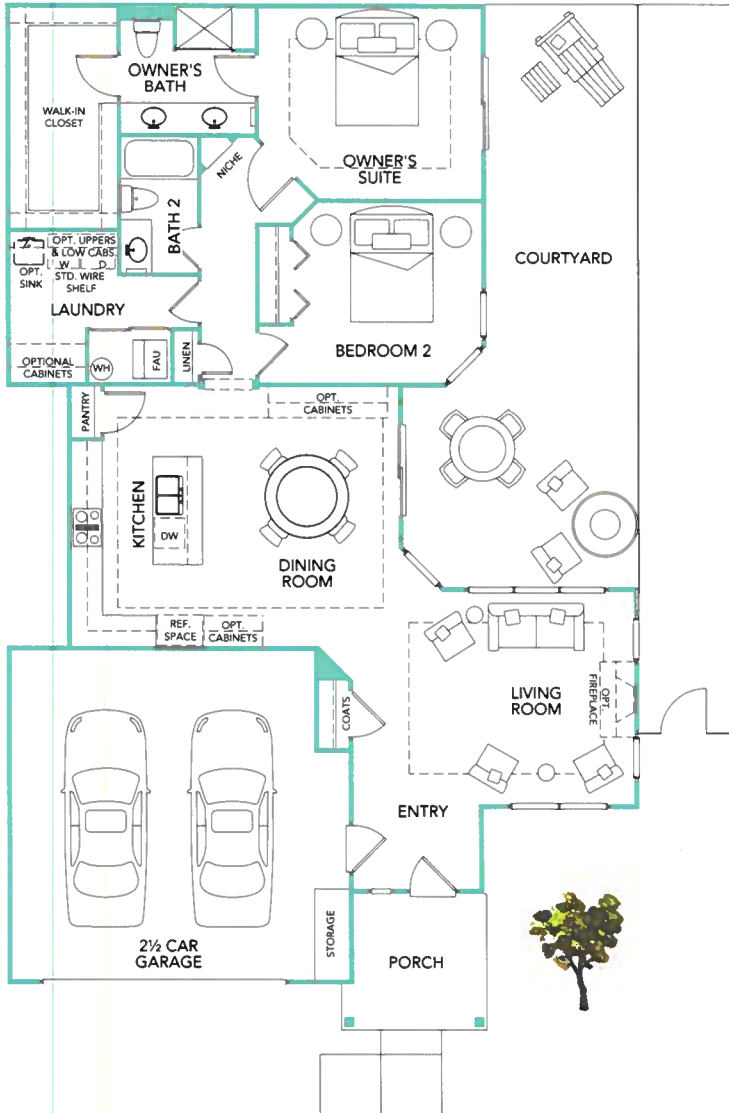


# Palazzo - Detached

2 BEDROOM, 2 BATH

2½ CAR GARAGE

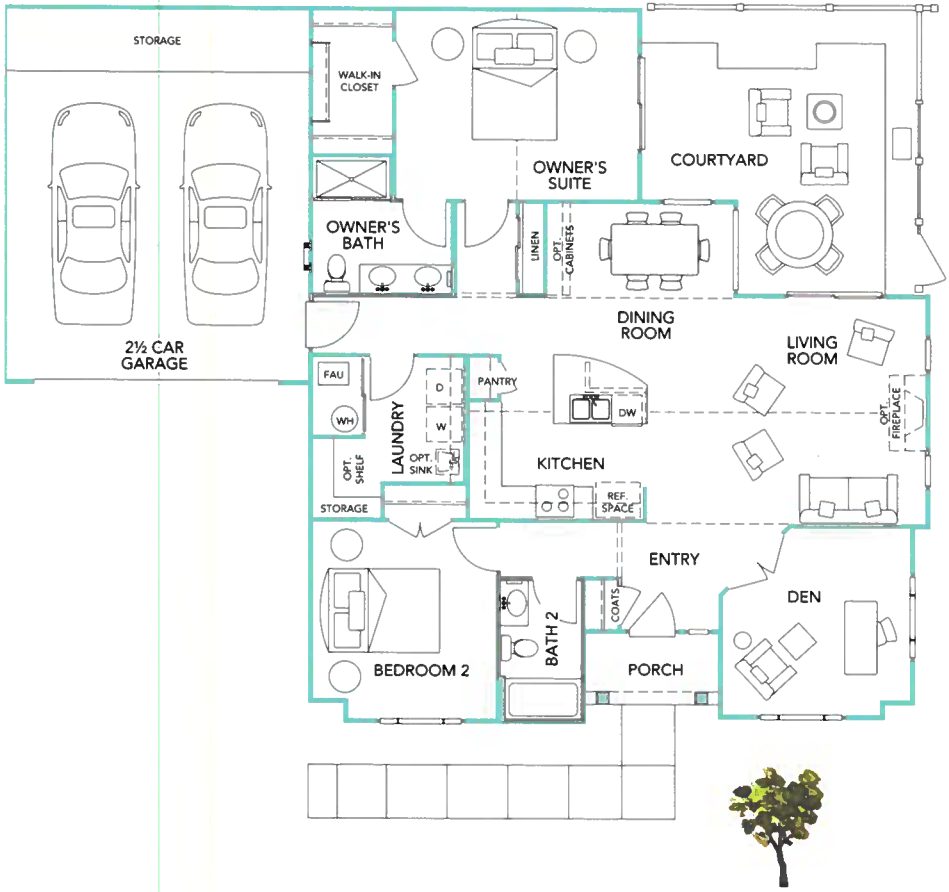
1,516 sq ft



# Colonnade

1,550 sq ft

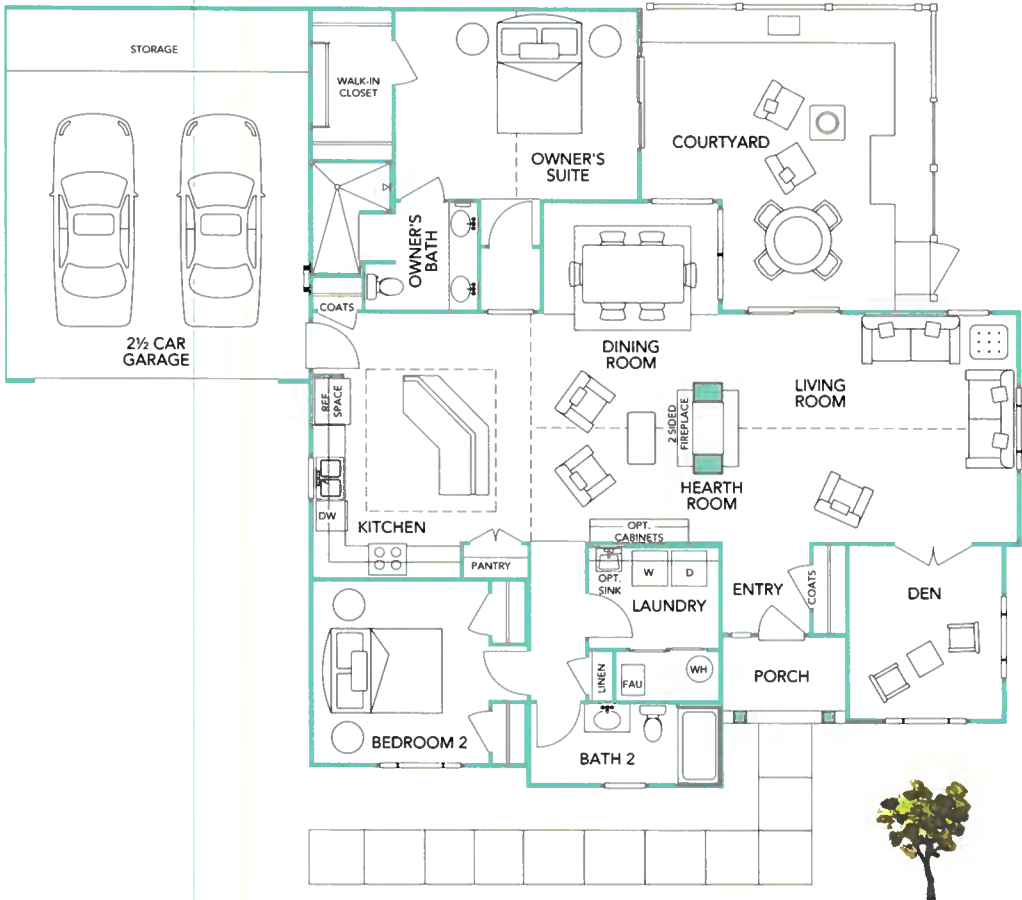
2 BEDROOM, 2 BATH  
2½ CAR GARAGE



# Ducal

1,825 sq ft

2 BEDROOM, 2 BATH  
2½ CAR GARAGE





## AMENITIES

The just-right balance of comfort and convenience.

---

Epon Communities started with the simple idea that smart floor plans, high-quality building materials and the right amenities in an association-maintained environment would give homeowners more of what they wanted. Time. And we've stayed true to that vision.

For more than 20 years, we've been anticipating and accommodating the latest lifestyle trends. We've designed our communities with quiet streets, perfect for power-walking or leisurely strolls. Some even have winding sidewalks that double as walking paths. Our communities include well-appointed common spaces, both indoor and out—plus the advantage of minimal maintenance. It's home ownership, without the hassle.

### Clubhouse Amenities

As soon as you move in, you'll quickly discover the Clubhouse is a welcoming, always-open extension of your own home. With an inviting great room, fully equipped kitchen, fitness center and outdoor swimming pool, it will be your new favorite place to work out, or simply chill out. Perfect for the Big Game, card games—and gatherings of every sort, it's just a few steps from your door.

---

#### MAINTENANCE-FREE LIVING

- Professionally landscaped common areas
- Lawn service
- Landscaping and Exterior Maintenance Included
- Water included\*
- Trash removal (if not provided by municipality)
- Fire, hazard, liability, and building insurance (except personal possessions)
- Common area lighting
- Exterior building maintenance
- Street maintenance and repair
- Operation of swimming pool and community center
- Reserves and future replacement funds (limited)
- Professional management services