

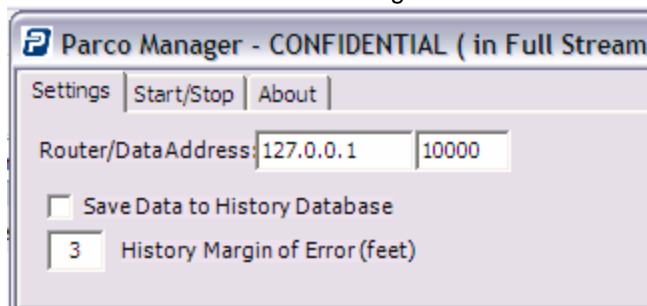
Locate the Parco Folders on the Desktop:



Open #1 Test Manager 1

Name	Size	Type	Date Modified
Dart.PowerTCP.Sockets.dll	152 KB	Application Extension	1/10/2003 8:49 AM
ParcoRTLS.dll	160 KB	Application Extension	6/2/2004 2:21 PM
ParcoTestManager.exe	112 KB	Application	12/14/2004 4:10 PM
ParcoTestManager.exe.config	2 KB	Web Configuration file	3/22/2005 10:08 AM

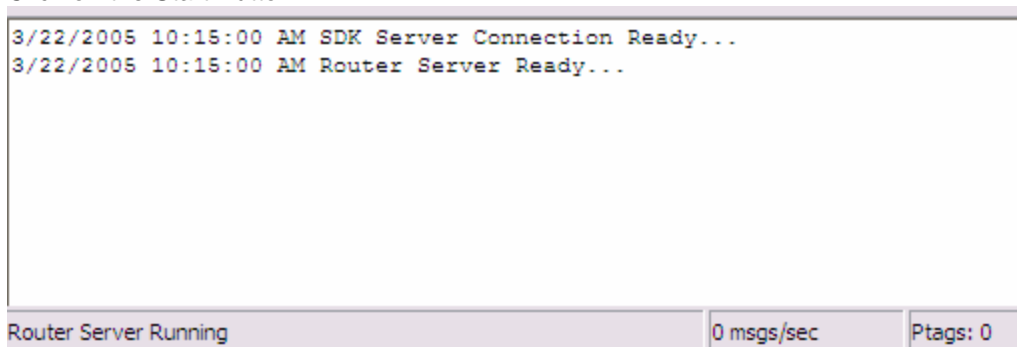
Double Click on ParcoTestManager.exe



Click on the Start/Stop Tab



Click on the Start Button



The message window will populate with the messages (above) and the tag count indicator

will say 0 msgs/sec

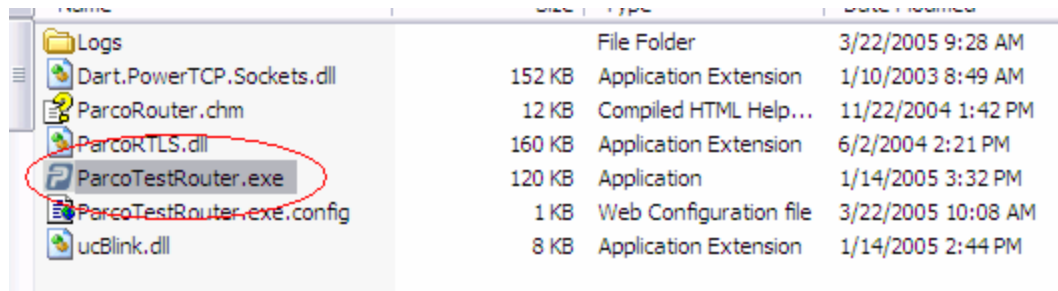


Minimize the window using the minimize icon (circled)

Open #1 Test Manager 2

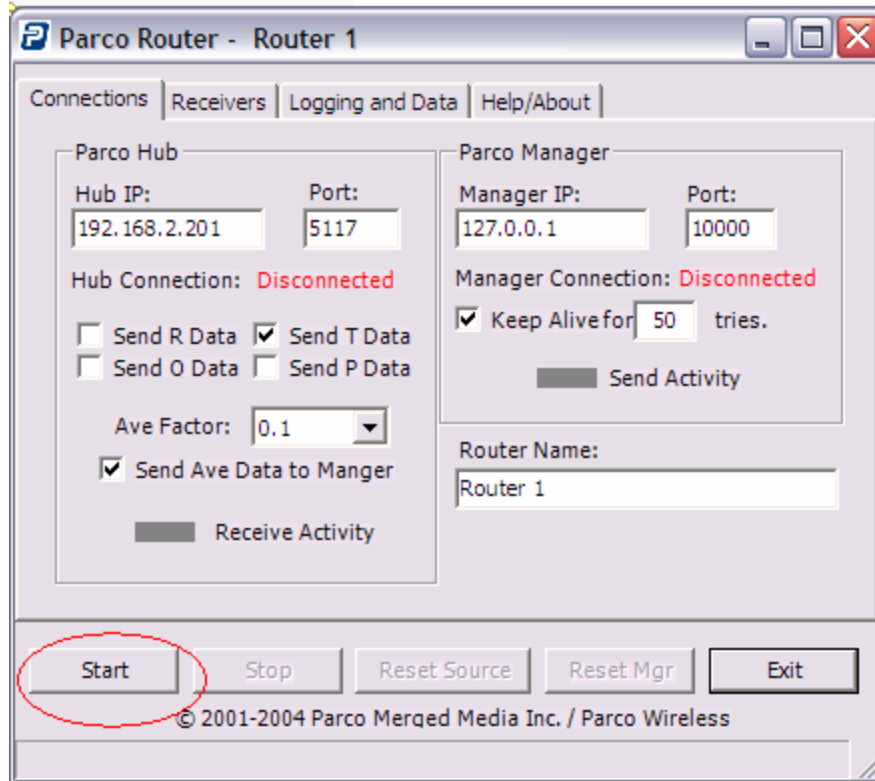
Repeat the Process for Test Manager 2

Open #2 Router 1

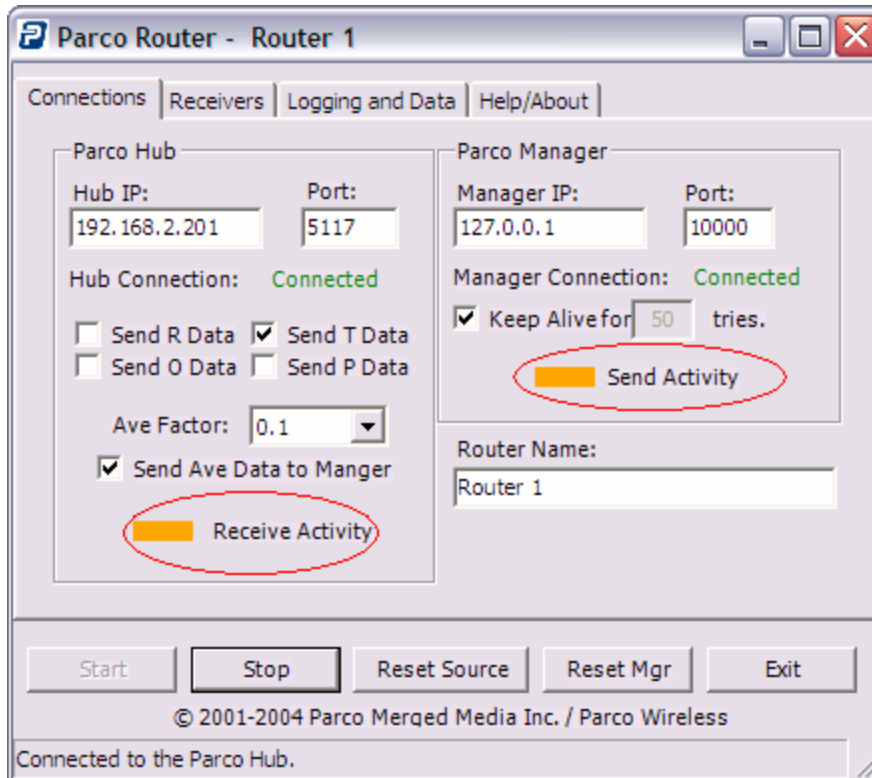


File Name	Size	Type	Date Modified
Logs		File Folder	3/22/2005 9:28 AM
Dart.PowerTCP.Sockets.dll	152 KB	Application Extension	1/10/2003 8:49 AM
ParcoRouter.chm	12 KB	Compiled HTML Help...	11/22/2004 1:42 PM
ParcoRTLS.dll	160 KB	Application Extension	6/2/2004 2:21 PM
ParcoTestRouter.exe	120 KB	Application	1/14/2005 3:32 PM
ParcoTestRouter.exe.config	1 KB	Web Configuration file	3/22/2005 10:08 AM
ucBlink.dll	8 KB	Application Extension	1/14/2005 2:44 PM

Double click the ParcoTestRouter.exe file to open

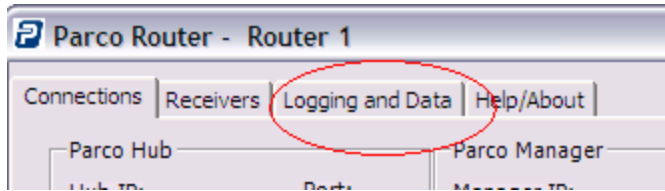


Click Start to start the router

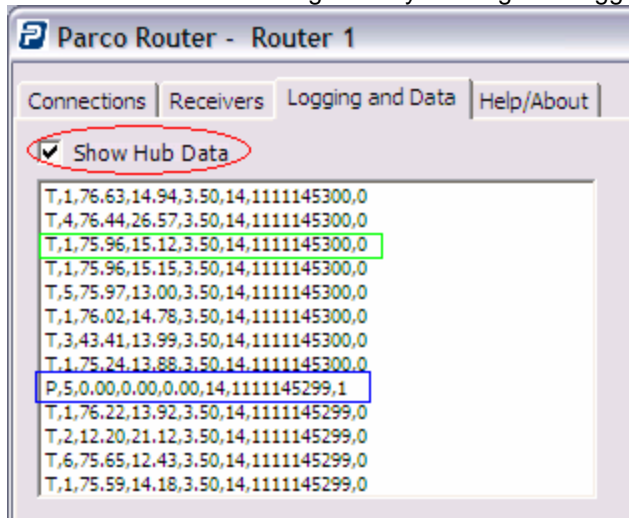


The Receive and Send Activity Icons will illuminate (orange) and the Hub Connection and Manager Connection indicators will change to Connected (green).

Note:



You can view the incoming data by clicking the Logging and Data tab



Be sure to Click Show Hub Data

The Data Stream should include T & P data (see included PAL650 instruction manual for datastream information)

Open #2 Router 2
Repeat Steps from Router 1