



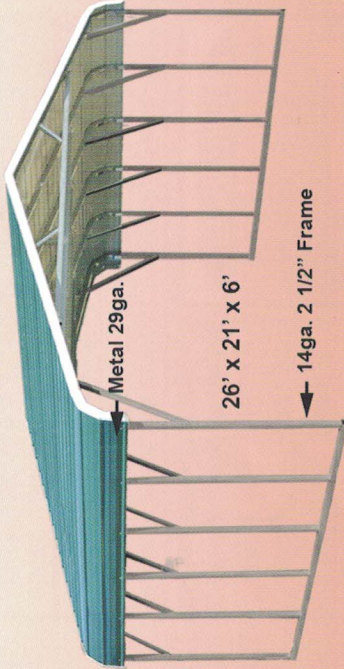
CAROLINA CARPORTS, INC



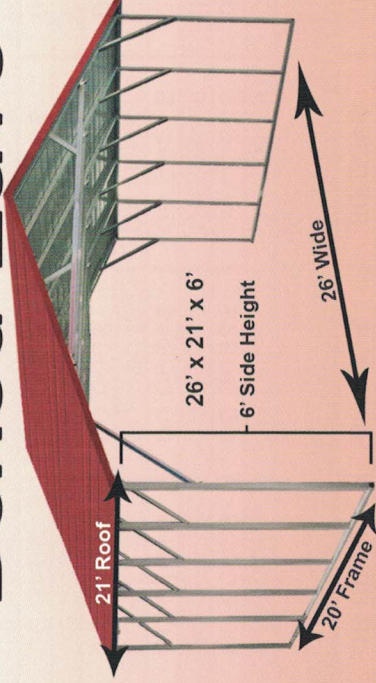
QUALITY IS OUR FIRST PRIORITY!
TRIPLE WIDE CERTIFIED BUILDINGS

26' to 30' Wide - Up to Any Length - 140mph / 45psf

Regular



Boxed Eave



Vertical



15' - 16' HT REQUIRES
 A TELESCOPIC
 FORKLIFT

*** LAND MUST BE LEVEL PRIOR TO THE INSTALLATION OF ANY BUILDING ***

ALL BUILDINGS INCLUDE:

- 29 Gauge Roofing
- Braces On Every Leg
- Welded Center Truss
- Mobile Home / Cement Anchors
- 4' Centers or Less

1 Year Workmanship Warranty
 On All Buildings (Limited)

Frame is 1ft Shorter Than
 Roof Length On All Buildings.

20 Year Limited Rust Through Warranty on:
 Certified Buildings - Lifetime Warranty (Limited)

- Vertical Roofs Up to Any Length
- Regulars and Boxed Eaves up to 31'
- 14ga. 2 1/2" & 12ga. 2 1/4" Framing

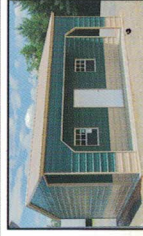
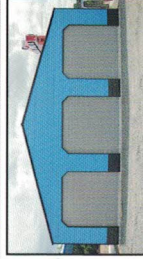
Available Heights 6' -16'

| | | |
|---------|---------|---------|
| 26 x 21 | 28 x 21 | 30 x 21 |
| \$1,995 | \$2,095 | \$2,195 |
| 26 x 26 | 28 x 26 | 30 x 26 |
| \$2,495 | \$2,595 | \$2,795 |
| 26 x 31 | 28 x 31 | 30 x 31 |
| \$2,995 | \$3,095 | \$3,395 |
| 26 x 36 | 28 x 36 | 30 x 36 |
| \$3,495 | \$3,695 | \$3,995 |

Available Heights 6' -16'

| | | |
|---------|---------|---------|
| 26 x 21 | 28 x 21 | 30 x 21 |
| \$2,095 | \$2,195 | \$2,295 |
| 26 x 26 | 28 x 26 | 30 x 26 |
| \$2,595 | \$2,795 | \$2,895 |
| 26 x 31 | 28 x 31 | 30 x 31 |
| \$3,095 | \$3,395 | \$3,495 |
| 26 x 36 | 28 x 36 | 30 x 36 |
| \$3,695 | \$3,995 | \$4,195 |

Buildings over 36 feet long must be vertical roof style.



Available Heights 6' -16'

| | | |
|---------|---------|---------|
| 26 x 21 | 28 x 21 | 30 x 21 |
| \$2,395 | \$2,495 | \$2,595 |
| 26 x 26 | 28 x 26 | 30 x 26 |
| \$2,995 | \$3,095 | \$3,295 |
| 26 x 31 | 28 x 31 | 30 x 31 |
| \$3,595 | \$3,695 | \$3,995 |
| 26 x 36 | 28 x 36 | 30 x 36 |
| \$4,195 | \$4,395 | \$4,695 |
| 26 x 41 | 28 x 41 | 30 x 41 |
| \$4,995 | \$5,195 | \$5,395 |

Certified 105/65 12ga Upgrade

Braces On All Legs, MHA (Ground) or Asphalt

6'-11' Single Leg, Single Base Rail.

12'-14' Single Leg, Single Base Rail, Reinforced.

13'-16' Double Leg, Double Base Rail. (see back for details).