

Experienced Commercial Pipefitter

- 📍 **Base Location:** Essex or Suffolk - Colchester, Sudbury, Braintree, Ipswich or surrounding areas
- 📍 **Work Area:** South of England (Home Counties predominantly)
- 🕒 **Job Type:** Full-time, Permanent
- 💰 **Salary:** £55,000 - £65,000 per annum (inclusive of average overtime; dependent on experience)
- 👤 **Reports to:** Mechanical Supervisor

Overview

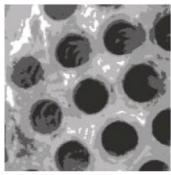
We are seeking a **highly experienced Commercial Pipefitter** to join our expanding Mechanical team. This is a mobile, field-based role involving both **team-based installations** and **independent work** on smaller tasks. You will be responsible for the installation of a variety of commercial and industrial mechanical systems.

Key Responsibilities

- Being a key part of a team, primarily tasked with the installation of commercial and industrial heating and hot water boilers
 - Installation of pipework and fittings (all types, i.e. Carbon steel, Copper, Stainless steel, Plastic (ABS) etc), fixings and bracketry
 - Installation of pumps, valves, fans, and associated equipment to support the installed plant
 - Travel and occasional overnight stays (with notice)
-

Mandatory Requirements

- **Experience:** Minimum 5 years in the HVAC industry
- **Driving Licence:** Full clean UK driving licence
- **Clearance:** Enhanced DBS or Enhanced Level 1 application-ready



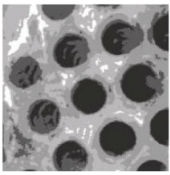
- **Plumbing Qualifications:**
 - City & Guilds Level 2 in Plumbing and Heating (or equivalent pipefitting qualification)
 - Water Regulations (WRAS)
 - Unvented Water Regulations (G3)
- **IT Skills:** Proficient in Microsoft Outlook (emails)

Preferred Qualifications & Experience

- Industrial gas, oil, or plumbing expertise
- Gas qualifications (Gas Safe, ACS etc)
- OFTEC qualifications (50, 101, 600 etc)
- Renewable energy qualifications (Solar, ASHP, etc.)
- UKATA Asbestos Awareness
- PASMA, IPAF certifications
- Memberships: CEA, IGEM, CPHE
- CITB training courses; SMSTS, SSSTS
- Engineering registration: EngTech, IEng, or CEng

Package & Benefits

- **Pay:** Weekly, door-to-door (daily rate includes average overtime over 40+20-hour weeks)
- **Vehicle:** Company van
- **Equipment:** Company phone, tooling



- **Bonuses:**
 - 6-monthly performance bonus (paid into pension)
 - Monthly team-based voted bonus
- **Holidays:**
 - 20 days + bank holidays
 - Increases by 1 day per year up to 25 days
- **Additional Benefits:**
 - Company pension
 - Cycle to work scheme
 - Full training package, for renewal and continued professional development

Schedule

- Monday to Friday
- Average 40 hours/week + 20 hours overtime
- Weekend availability (overtime)

Required Certifications

- City & Guilds NVQ Level 2 in Plumbing and Heating (or equivalent pipefitting qualification)
- Valid UK driving licence

If you're a skilled commercial pipefitter ready to take on a dynamic role with an established team, **apply today** and bring your expertise to a company that values your dedication. Please contact us via email, sending an up-to-date CV and cover letter to: Info@industrialboilerservices.com