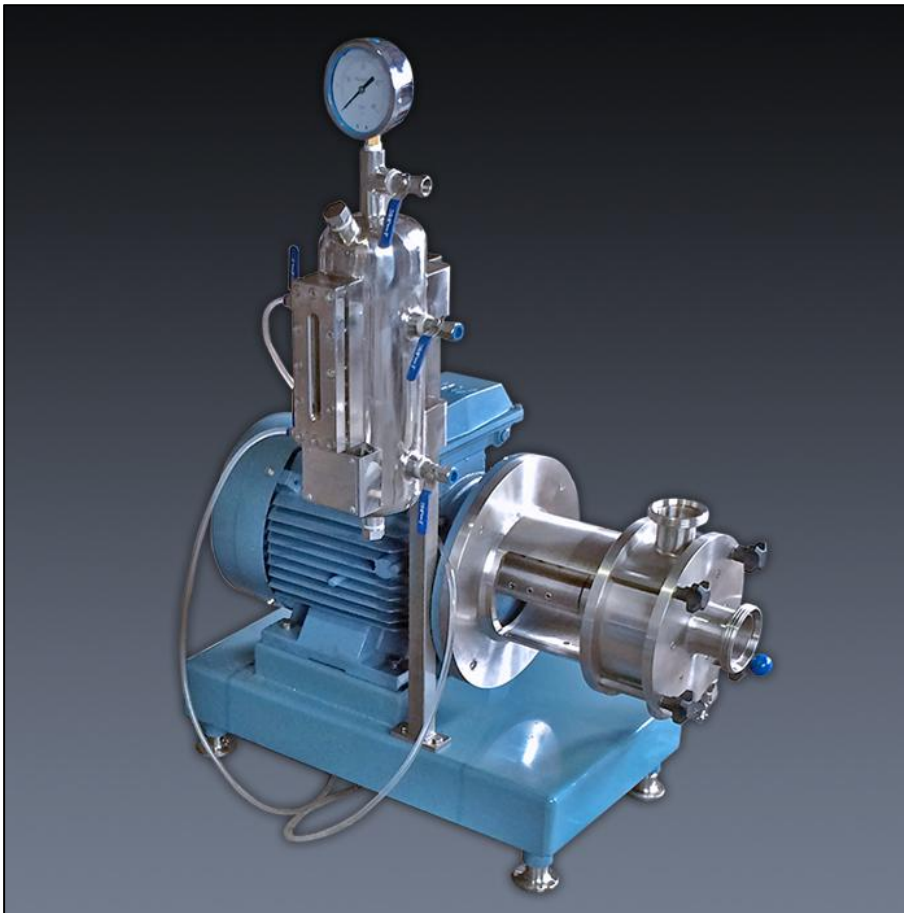


PC - Inline Emulsifier Mixer

Introduction:



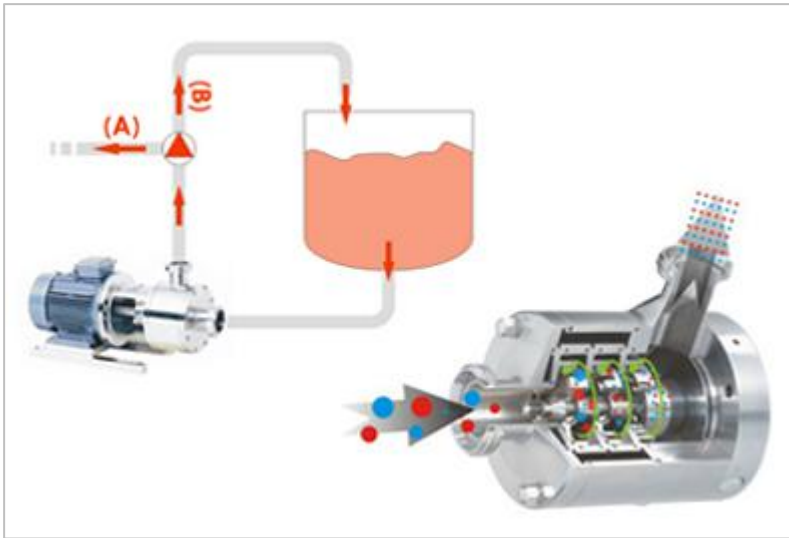
An inline mixer is a high shear mixer for inline or continuous operation. In the Inline process, the mixer is installed outside the tank. This makes it easy to be built into an existing production line with normal inlet/outlet connections.

In the case to deal with liquid with a low viscosity, the inline mixer can pump the liquid without an additional pump. That is why it is also called High Shear Pump.

The mixer can be used to deal with the product in a single pass or with several circulations to make the product better.

Different from a Batch High Shear Mixer, the mixing occurs in the mixing chamber, thus energy is introduced onto materials in the most efficient way. This also cuts the process times by up to 90% compared with conventional blending methods.

How It Works:



Same as PS series High Shear Mixers, there are also four steps to explain the working principle of the PC series Inline Mixers:

Step 1. When the rotor is driven by the motor, it rotates at a very high speed of several thousands rpm. A powerful suction is generated at its center and draws both solids and liquids from the inlet pipe into the working chamber.

Step 2. Centrifugal force leads the materials to the periphery. Materials are subjected to intensive squeezing and milling at the precision machined clearance between rotor and stator. High pressure is created there too due to the gathering of materials, which makes the impact between particles more remarkable.

Step 3. Followed is another intense hydraulic shear as the materials are forced out through the openings in the stator at very high velocity. When material particles arrive outside of the stator, they tend to explode into thousands of even smaller ones as the pressure drops down sharply.

Step 4. Fresh materials are continually drawn into the stator-rotor maintaining the circulation or single-pass flow.

Stator/Rotor System:



K type

V type

PerMix also designs two types of Stator & Rotor systems: K type and V type. Both have several sub-types. These designs of stator & rotor systems offers more selections for our customers to choose the most suitable one to deal with their specific liquids and solids.

Multi-stage & Multi-row Stator/Rotor:



- **Rows:** Every stator and every rotor have one or several rows of "teeth" (K-type, stator and rotor), or "blades" (V-type, rotor), or "screens" (V-type, stator).

- **Stages:** PerMix supplies PC1 series Single-stage Inline Mixer, and PC3 series Multi-stage Inline Mixer. PC3 series Inline Mixers have three sets of stator & rotor. Standard PC3 Mixer includes sets of coarse, intermediate and fine stator & rotor assemblies. PC3 Series Inline Mixer is applied to deal with difficult-to-disperse materials, or when customers require single-pass processing.

The multi-stage (usually 3-stage) inline mixer has 3 sets of stator/rotor systems to enhance its shearing performance. This design dramatically reduce processing time, and in some cases only one pass through the mixer can lead to satisfied products.

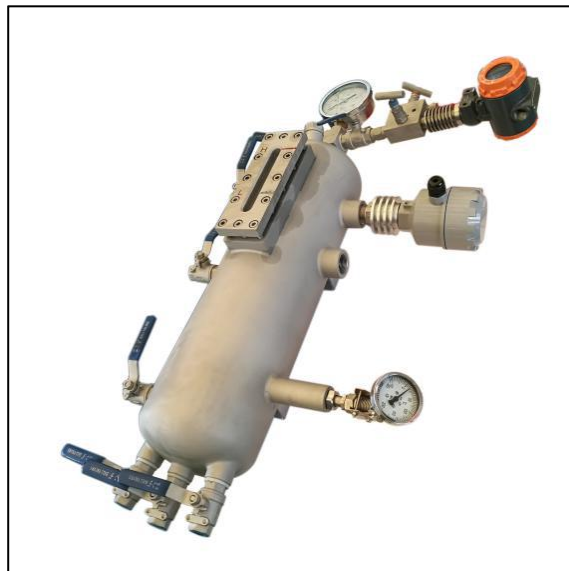
Depending on the materials to be processed and customer requirements, for each stator/rotor, there can be only one row, or multi-row of teeth. Besides, PerMix provides coarse, medium and fine teeth to achieve different shearing intensity.

Special Design with Ultra-high Speed:



PerMix designs the ultra-high speed inline mixer with the tip speed of about 40m/s. The ultra-high speed inline mixer is belt driven to increase the rotation speed of the rotor up to 12,000rpm (Model: PC-1/60, pilot size).

Thermosiphon for Double Mechanical Seals:



The thermosiphon is used to store and cool the buffer liquid for the double mechanical seals, operated as a closed circuit. It is able to compensate the leakage of the buffer liquid at the double mechanical seals to avoid drying running of the seals, thus improve the performance and duty life of the seals.

The buffer liquid flows to the thermosiphon from the double mechanical seals with the principle of Thermosiphon Effect (or by forced circulation), and returns to the seals being exchanged and cooled.

The thermosiphon is built in SS304 or SS316L, with pressure gauge, sight glass, all necessary connection nozzles and brackets for easy installation. The tank can be built with or without cooling coil with the purpose to cool the buffer liquid by cooling water.

Applications:

Inline Emulsifier Mixers are widely used by a variety of industries in different stages of the processing. They are highly efficient to save a lot of energy and time compared with traditional mixing methods.

- Food & Beverage

Reconstituted milk, Salad dressing, Mayonnaise, Ice cream, Cheese, Yogurt, Fruit juice

- Pharmaceuticals & Biology

Drug synthesis, Vaccine, Fat emulsion, Injectable suspension, Veterinary medicine, Cell extraction

- Cosmetics & Daily Care

Detergent, Body gel, Shampoo, Cream, Lotion, Tooth paste, Soap

- Chemicals & Oil Industry

Synthetic rubber, Resin, Bitumen, Silicon oil, Dye, Pigment, Coating, Ink, Nano material

Specifications:

Single stage, PC-1:

Model	Watts, kW	RPM, @50Hz	Max. Capacity	Size [DN]	
			[L/hr] @ 1 cPs	Inlet	Outlet
PC-1/60K-Ultra	4	7,500	1,500	32	25
PC-1/80K	1.5	3,000	1,500	32	25
PC-1/100K	2.2		3,000	40	32
PC-1/120K	4		4,000	40	32
PC-1/140K	5.5		5,000	50	40
PC-1/165K	7.5		8,000	50	40
PC-1/180K	11		12,000	65	50
PC-1/185K	15		18,000	65	50
PC-1/200K	22		25,000	65	50
PC-1/210K	37		35,000	80	65
PC-1/230K	45		50,000	100	80
PC-1/245K	55		75,000	100	80
PC-1/260K	75		90,000	125	100
PC-1/280K	90		110,000	125	100
PC-1/290K	132		130,000	150	125

Three-stage, PC-3:

Model	Watts, kW	RPM, @50Hz	Max. Capacity	Size [DN]		
			[L/hr] @ 1 cPs	Inlet	Outlet	
PC-3/80K	4	3,000	1,500	32	25	
PC-3/100K	5.5		3,000	40	32	
PC-3/120K	7.5		4,000	40	32	
PC-3/140K	11		5,000	50	40	
PC-3/165K	18.5		8,000	50	40	
PC-3/180K	22		12,000	65	50	
PC-3/185K	30		18,000	65	50	
PC-3/200K	45		25,000	65	50	
PC-3/210K	55	1,500	35,000	80	65	
PC-3/230K	75		45,000	100	80	
PC-3/245K	90		60,000	100	80	
PC-3/260K	110		75,000	100	80	
PC-3/280K	132			95,000	125	100

1. Actual liquid capacity will vary depending on the liquid type and different stator rotor system.
2. PerMix offers bigger capacity according to customer requests.
3. PerMix reserves the right to modify the design without notice.

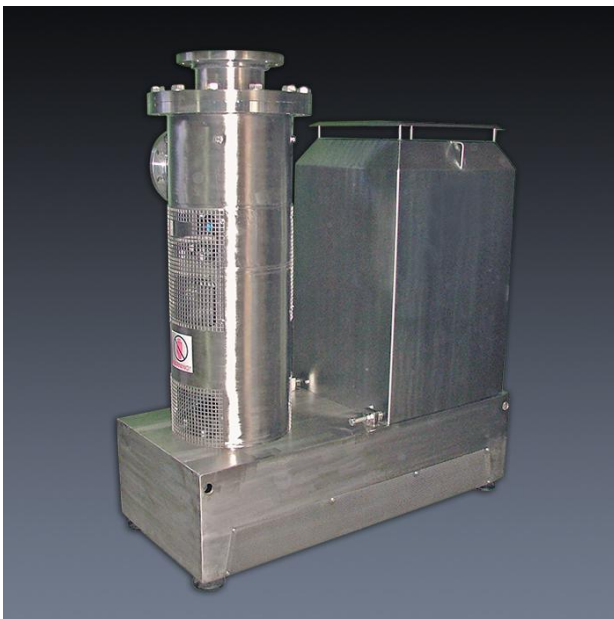
Gallery:



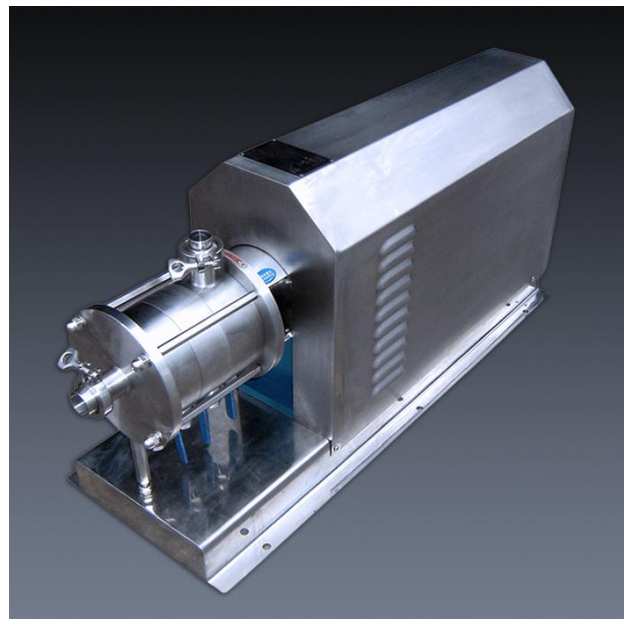
PC Inline Mixer Mounted on Wheels



PC Inline Mixer with V type Rotor Stator



PC-3 Heavy Duty Inline Mixer, Belt-drive



PC-3 Inline Mixer, Direct-drive



Inline Mixer with Easy Dis-assembly Design



Light-duty PC Inline Mixer with Trolley



Various Stator/Rotor of PC Mixer



Standard K type Stator Rotor